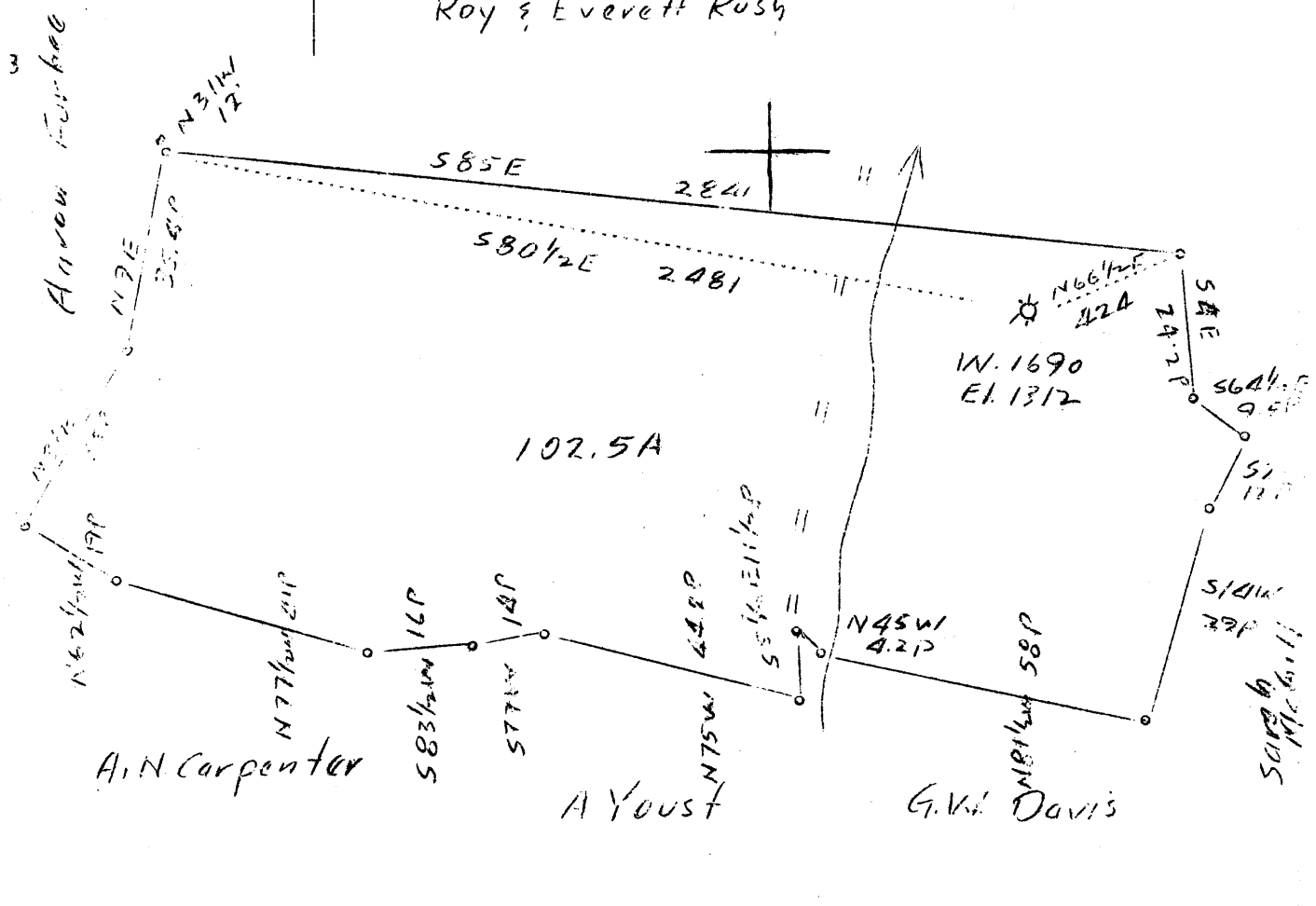


0 1 2 3 LATITUDE 39° 40'

1 2 3 LONGITUDE 80° 25'



3.08 2.11 W  
 3.60 2.65 S

Coal by T. L. Rogerson

Abd.

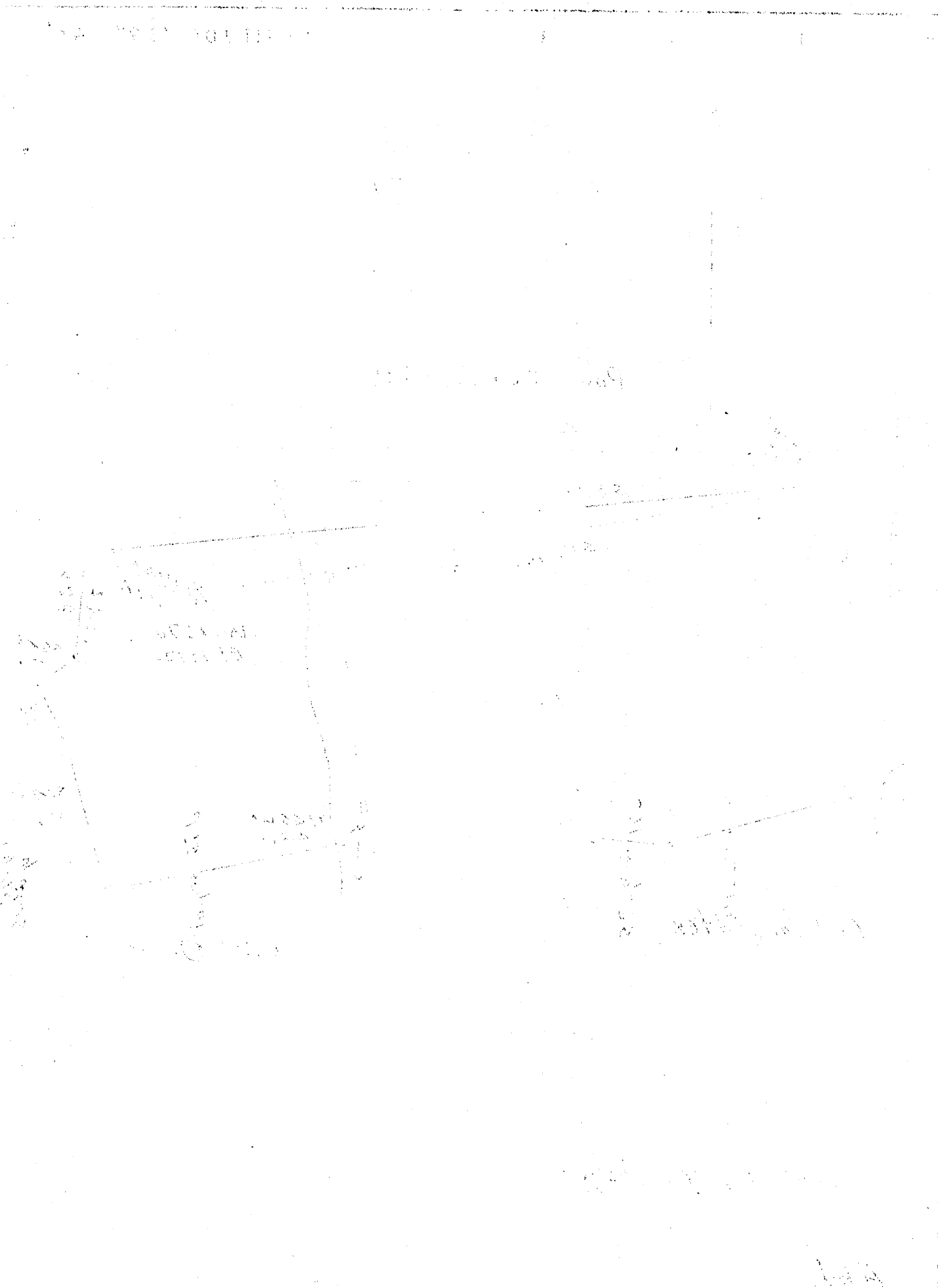
Company	The Manf. Light & Heat Co.
Address	800 Union Trust Bldg., Pgh. Pa.
Farm	Jacob D. Hornor Hrs.
Tract	Acres 102.5 Lease No. 2714
Well (Farm) No.	1 Serial No. 1690
Elevation (Spirit Level)	1312'
Quadrangle	Mannington W.C.
County	Wetzel District Church
Engineer	A.C. Streater
Engineer's Registration No.	
File No.	Drawing No. Y-7-927
Date	March 8, 1938 Scale 1"-500'

STATE OF WEST VIRGINIA  
 Department of Mines  
 OIL AND GAS DIVISION  
 CHARLESTON

WELL LOCATION MAP  
 File No. WET-255A

+ Denotes location of well on United States Topographic Maps, scale 1 to 62,500, latitude and longitude lines being represented by border lines as shown.

- Denotes one inch spaces on border line of original tracing.



**RECEIVED**  
MAR 14 1938  
DEPARTMENT OF  
GEOLOGICAL SURVEY

J. D. KORNBERG HEIRS NO. 1 (1690) WELL.  
(JACOB)

No. 734 C.F.-Wetzel.  
(AS. PERMIT WET-255).

Church District, Wetzel County, W. Va.

By The Manufacturers Light & Heat Co., Pittsburgh, Pa. (800 Union  
Trust Bldg.)

Abandoned under permit Wet-255, issued 3-15-38 (March report).

SMITH PLAT.

Located 3.11 mi. W. of 80° 25' and 3.65 mi. S. of 39° 40' - W0 -  
Mannington Quadrangle.

On 102.5 acres; lease No. 2714.

Elevation, 1312' L.

Flat from Smith March 14, 1938.

On 104 acres.

Elevation, 1312' L.

Surface owned by B. F. Hibbs, R. D. 6, Mannington, W. Va., and  
minerals by The Manufacturers Light & Heat Co., Pittsburgh, Pa.

Drilling commenced January 19, 1914; completed, June 12, 1914.

Rock pressure, 258 lbs.

13" casing, 140' '38' left in); 10", 1308 (477' left in); 8", 1661'  
(left in); 6", 2214' (left in); 3" tubing, 2311' (left in).

Coal was encountered at 1008-1014'.

O.W.S. wall packer, 6" x 3, set at 2297'.

Gas well.

Abandonment reported to Dept. of Mines March 8, 1938.

Record to ECT from Mrs. Griffith Sept. 16, 1938.

	Top.	Bottom.
Pittsburgh Coal	1008	- 1014
Little Dunkard Sand	1410	- 1440
Big Dunkard Sand	1450	- 1560
Gas Sand	1670	- 1675
Salt Sand	1740	- 1870
Marion Sand	2160	- 2195
Pencil Cove	2195	- 2210
Big Lime	2210	- 2280
Big Injun Sand (gas, 2310-2372')	2285	- 2468
Squaw Sand	2575	- 2600
30-Ft. Sand	2985	- 3015
Gordon Stray Sand	3057	- 3094
Gordon Sand	3103	- 3165
4th Sand (gas, 3185-3205')	3180	- 3214
(break in 4th Sand, 3190-3196')		
Total depth (SIM)		3470