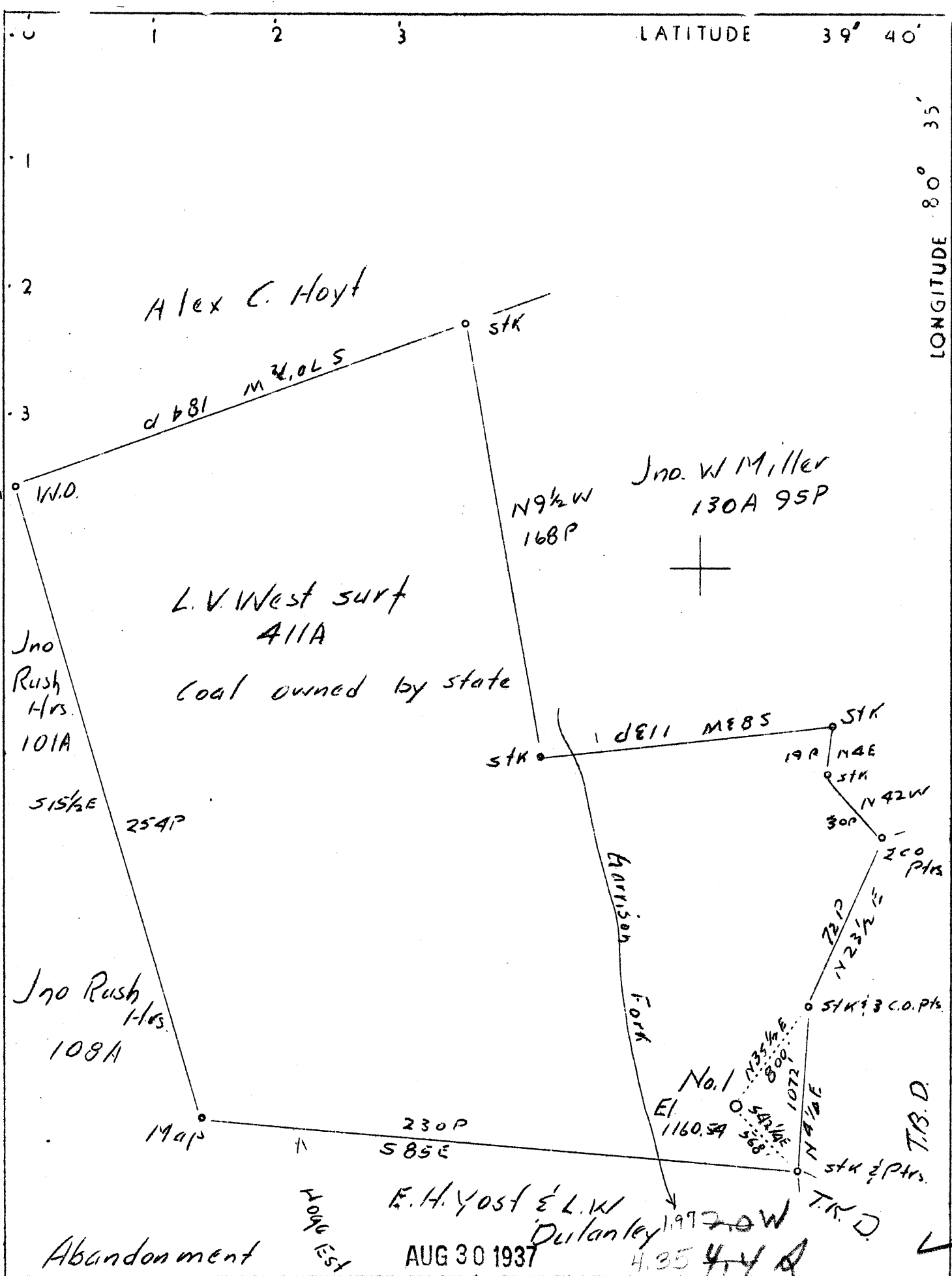


LATITUDE 39° 40'

LONGITUDE 80° 35'



Company South Penn Oil Co.
 Address 411 Seventh Ave., Pittsburgh, Pa.
 Farm W.J. Criswell
 Tract Acres 411 Lease No. 31947
 Well (Farm) No. 1 Serial No.
 Quadrangle Littleton
 County Wetzel
 District Center
 Engineer E.C. Tabler
 Engineer's Registration No.
 File No. _____ Drawing No. _____
 Date Aug. 3, 1937 Scale 1"=800'

STATE OF WEST VIRGINIA
 Department of Mines
 OIL AND GAS DIVISION
 CHARLESTON

WELL LOCATION MAP
 File No. WET-241A

+ Denotes location of well on United States Topographic Maps, scale 1 to 62,500, latitude and longitude lines being represented by border lines as shown.

— Denotes one inch spaces on border line of original tracing.

WEST VIRGINIA DEPARTMENT OF MINES
OIL AND GAS DIVISION

536

WELL RECORD

OIL

Permit No. Ad. P. 241-A

Oil or Gas Well (Kind) Oil

Company SOUTH PENN OIL COMPANY
 Address 411 Seventh Ave., Pittsburgh, Pa.
 Farm W. J. Criswell Acres 411
 Location (waters) -----
 Well No. 1 Elev. 1160.54
 District Center County Wetzel
 The surface of tract is owned in fee by L. V. West
 Address Pine Grove, W. Va.
 Mineral rights are owned by Georgia B. Criswell, et al
 Address Haskell, Okla.
 Drilling commenced July 13, 1900
 Drilling completed Oct. 23, 1900
 Date shot -- Depth of shot --
 Open Flow /10ths Water in -- Inch
 /10ths Merc. in -- Inch
 Volume -- Cu. Ft.
 Rock Pressure -- lbs. -- hrs.
 Oil -- bbls., 1st 24 hrs.
 Fresh water -- feet -- feet
 Salt water -- feet -- feet

Casing and Tubing	Used in Drilling	Left in Well	Packers
Size			
16			Kind of Packer <u>--</u>
13			
10	<u>480 (Pulled)</u>		Size of <u>--</u>
8 1/4	<u>1495 (Pulled 1208')</u>		
6 5/8	<u>2003</u>		Depth set <u>--</u>
5 3/16	<u>2500</u>		
3			Perf. top <u>--</u>
2			Perf. bottom <u>--</u>
Liners Used			Perf. top <u>--</u>
			Perf. bottom <u>--</u>

CASING CEMENTED -- SIZE -- No. FT. -- Date --
 COAL WAS ENCOUNTERED AT 965 FEET 84 INCHES
-- FEET -- INCHES -- FEET -- INCHES
-- FEET -- INCHES -- FEET -- INCHES

Formation	Color	Hard or Soft	Top	Bottom	Oil Gas or Water	Depth Found	Remarks
Pittsburgh Coal			965	972			
Dunkard			1465	1495			
Salt Sand			1715	2025			
L. Lime			2130	2150			
Pen. Cave			2150	2155			
B. Lime			2155	2215			
Big Injun			2215	2440			
Red Rock			2880	2940			
Gordon Stray			2993				
Gordon Sand			3030				
Total Depth				3045			



Formation	Color	Hard or Soft	Top	Bottom	Oil, Gas or Water	Depth Found	Remarks

Date..... **August 24,**, 19... **37**

APPROVED..... **SOUTH PENN OIL COMPANY,** Owner

By... *Elton E. Young* Land Agent.
(Title)