

Latitude

0.57s
1.86w

Longitude

Topo Location

7.5' Loc. _____ 15' Loc. _____
(calc.) _____

Company Daubenspec & Mason

Farm J B Whiteman #2

15' Quad _____
(sec.)

7.5' Quad Potters Falls

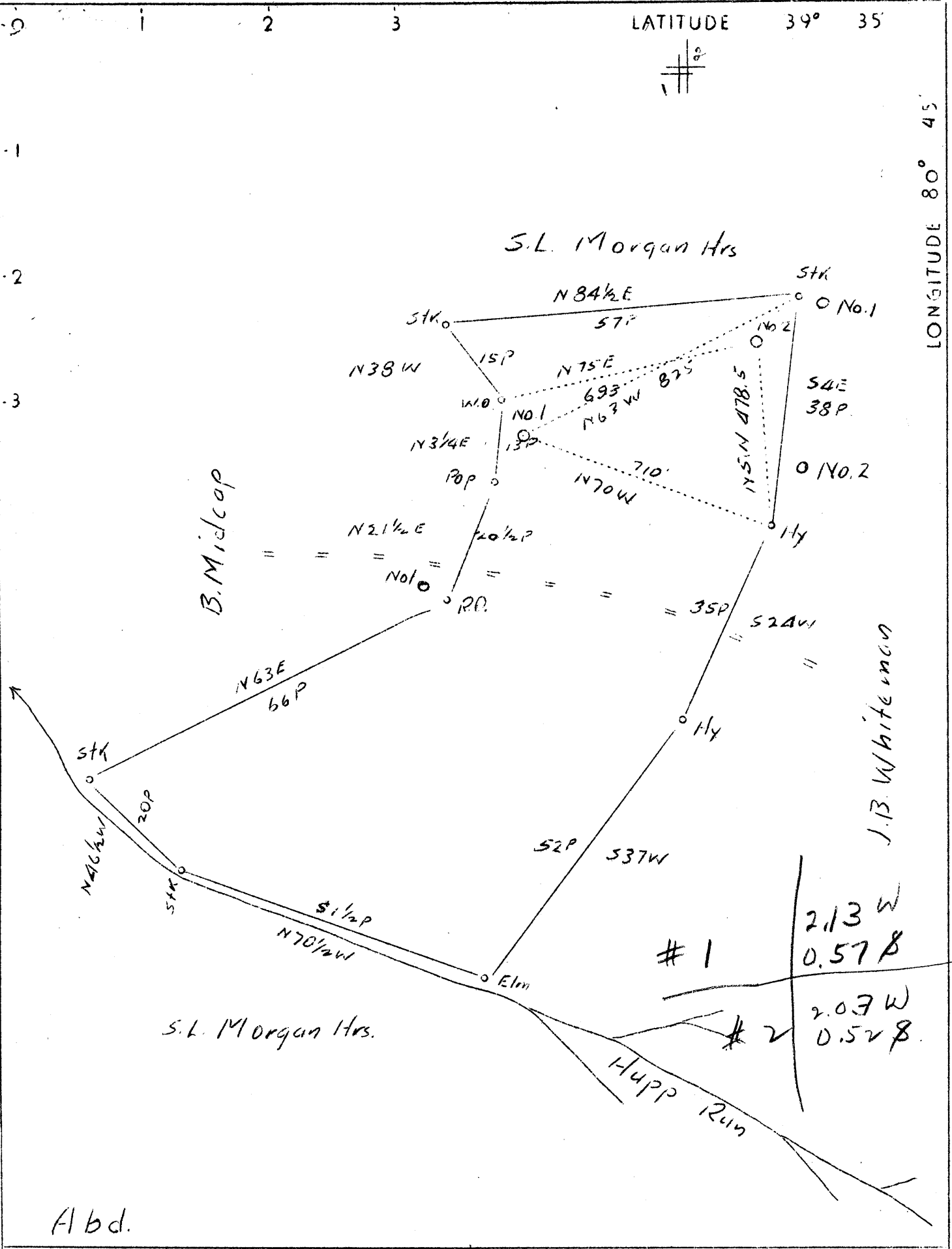
District Green

WELL LOCATION PLAT

County 103 **Permit** 30226

LATITUDE 39° 35'

LONGITUDE 80° 45'



Abd.

Company	Daubenspec & Mason
Address	Cairo, W.Va.
Farm	J.B. Whiteman
Tract	Acres 36 Lease No.
Well (Farm) No.	1 & 2 Serial No.
Elevation (Spirit Level)	1150 & 1151'
Quadrangle	New Martinsville
County	Wetzel District Green
Engineer	Bruce Ferrell, Jr.
Engineer's Registration No.	
File No.	Drawing No.
Date	Oct. 25, 1937 Scale 1"-20 P.

STATE OF WEST VIRGINIA
 Department of Mines
 OIL AND GAS DIVISION
 CHARLESTON

WELL LOCATION MAP
 File No. WET-226A & 227A

+ Denotes location of well on United States Topographic Maps, scale 1 to 62,500, latitude and longitude lines being represented by border lines as shown.

— Denotes one inch spaces on border line of original tracing.

CHERRYLAND
2381 S. Ave.
MAY 19 1937

Green District, Wetzel County, W. Va.
By Dushenspeck & Rosen, Parkersburg, W. Va. (1800-19th St.)
Abandoned under permit Wet-226, issued 4-13-37. (April report).

Smith's plat.
Plat case in numbered 246-A by mistake.
Located 2.13 mi. W. of 80° 45' and 0.57 mi. S. of 39° 35' - SE -
New Martinsville quadrangle.
On north side of Rupp Run.
On 36 acres.
Elevation, 1150' ±.
Plat from Smith Nov. 2, 1937.

On 36 acres, at Porters Falls, on Fishing Creek; surface and
minerals owned by J. B. Whitesman, Porters Falls, W. Va.
Well was drilled in 1925.
Elevation, 1150' ±.
10" casing, 145' (pulled); 8", 1482' (pulled); 6", 2065';
2" tubing, 2220'.
No coal was encountered.
This well was bought for junk from Pittsburg Oil & Gas Co.
Abandonment reported to Dept. of Mines Feb. 16, 1937.
No record of shot. No record of any water.
Oil? well.
Record to RCF from Mrs. Griffith Sept. 16, 1938.

	Top.	Bottom.	Thickness.
Unrecorded to Norton Sand	0	1827	1827
Norton Sand	1827	1837	10
Red rock	1837	1840	3
Hard sand	1840	1850	10
Big Line	1871	1935	64
Keener Sand (top)	1935
Big Injun Sand	2206	2220	14
Total depth:		2220	