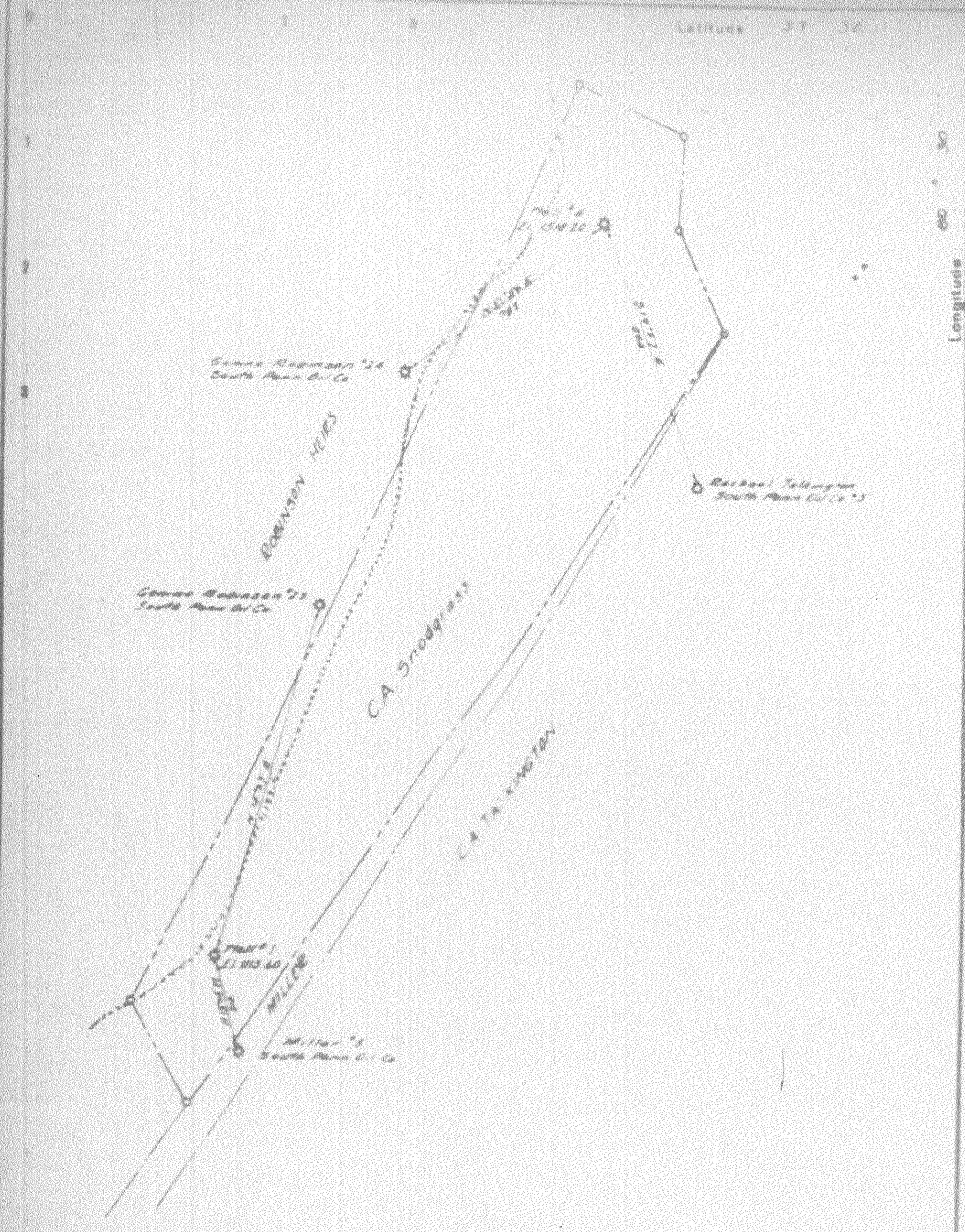


Company G. P. GROUGH
 Address SALOM HILL W
 Farm CA SNODGRASS

STATE OF WEST VIRGINIA
 DEPARTMENT OF MINES
 OIL AND GAS DIVISION
 CHARLESTON

36215



Company G. R. CROUCH
 Address SALEM, WEST VA.
 Farm C. A. SNODGRASS

STATE OF WEST VIRGINIA
 DEPARTMENT OF MINES
 OIL AND GAS DIVISION
 CHARLESTON

Grant District, Wetzel County, W. Va.

By C. D. Crouch, Harrisville, Ohio.

On 45 acres, on head of David Talkington Run; surface owned by Robinson Improvement Co., Smithfield, W. Va., and minerals by C. A. Snodgrass Heirs.

Elevation, 1510.20' L.

13" conductor, 14'; 10" casing, 300'; 8 $\frac{1}{4}$ ", 1890'; 6 $\frac{5}{8}$ ", 2640'.

Coal was encountered at 1390-1396'. No liner used.

Abandonment reported to Dept. of Mines Oct. 24, 1936.

Well was shot at 3503-3515'.

Oil well.

Record to RCT from D. G. Courtney (Dept. of Mines) 5-5-37.

	Top.	Bottom.	Thickness.
Pittsburgh Coal, black	1390	- 1396	6
Salt Sand, white, sandy	2225	- 2493	268
Big Injun Sand, white, sandy	2765	- 2940	175
Gordon Sand (oil)	3486	- 3503	17
Total depth			(3515?)

NSA