

39° 40' 00"

Latitude

80° 37' 30"

Longitude

+ 1.24s
1.95w

Topo Location

7.5' Loc. _____ 15' Loc. _____
_____ (calc.) _____

Company CM Johnson

Farm Joseph Kirkland # 3189

15' Quad _____
(sec.)

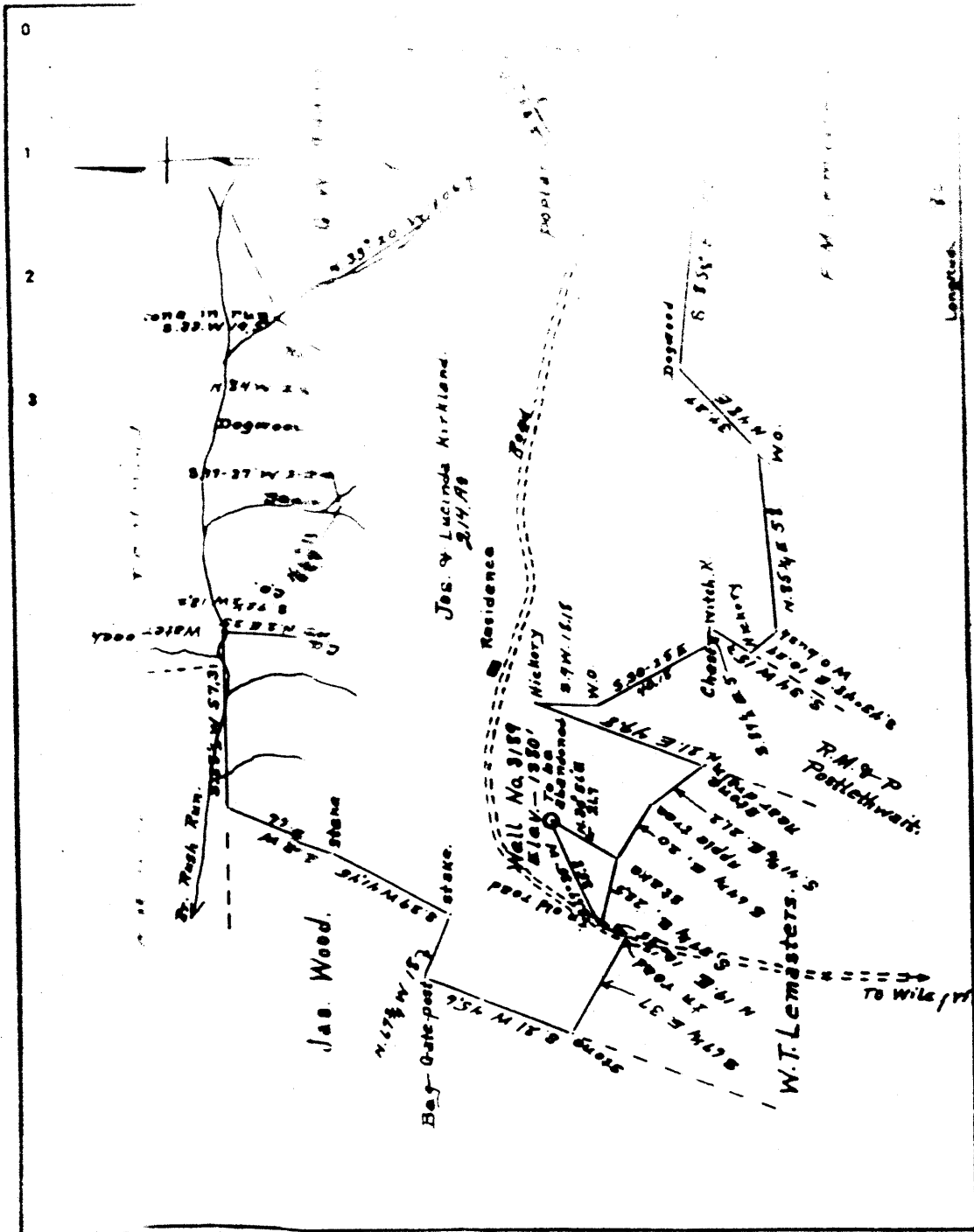
7.5' Quad Wileyville

District Center

WELL LOCATION PLAT

County 103 Permit 30207

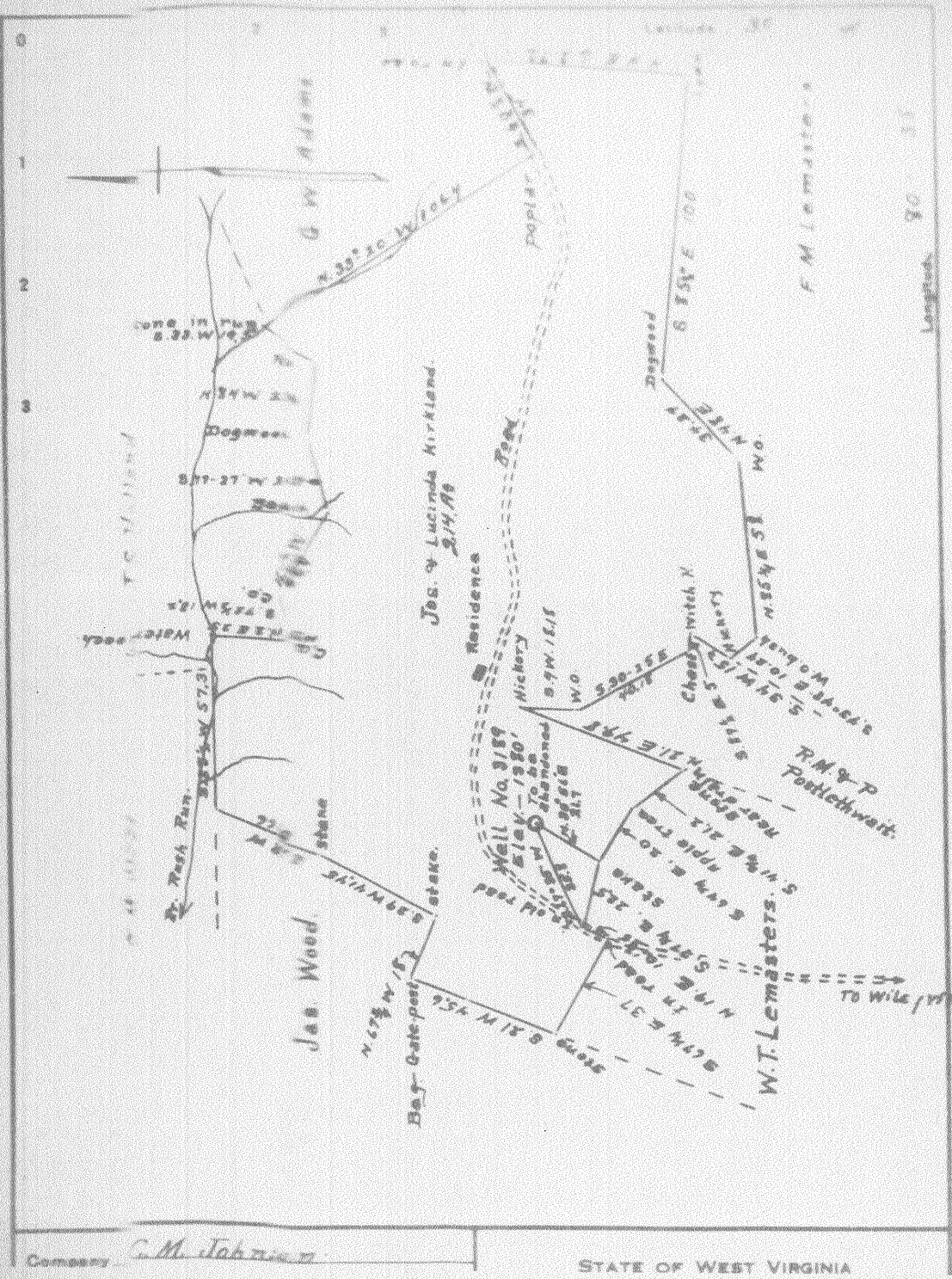
30207



Company

M. Johnson

STATE OF WEST VIRGINIA



Compass C.M. Johnson

STATE OF WEST VIRGINIA

Center District, Wetzel County, W. Va.

By C. M. Johnson, Wileyville, W. Va.

Elevation, 1380' B.

10" casing, 740'; 6", 2465'; 5³/₈", 2960'. No liner used.

Coal was encountered at 1309-1315'.

Abandonment reported to Dept. of Mines July 1, 1936.

Well was shot at 3362'.

Producing hole.

| | Top. | Bottom. | Thickness. |
|--------------------------------------|------|---------|------------|
| Pittsburgh Coal | 1309 | - 1315 | 6 |
| (Water at 1770') | | | |
| Salt Sand | 2150 | - 2160 | 10 |
| Big Lime | 2458 | - 2525 | 67 |
| Big Injun Sand | 2525 | - 2750 | 225 |
| 50-Ft. Sand | 2995 | - 3010 | 15 |
| Pink rock | 3190 | - 3210 | 20 |
| Stray Sand (oil and gas, 3329-3335') | 3327 | | |
| Gordon Sand | 3345 | - 3362 | 17 |
| Total depth | | 3559 | |
| Hole filled up solid to | | 3362 | |
| Shot and cleaned out to | | 3362 | |