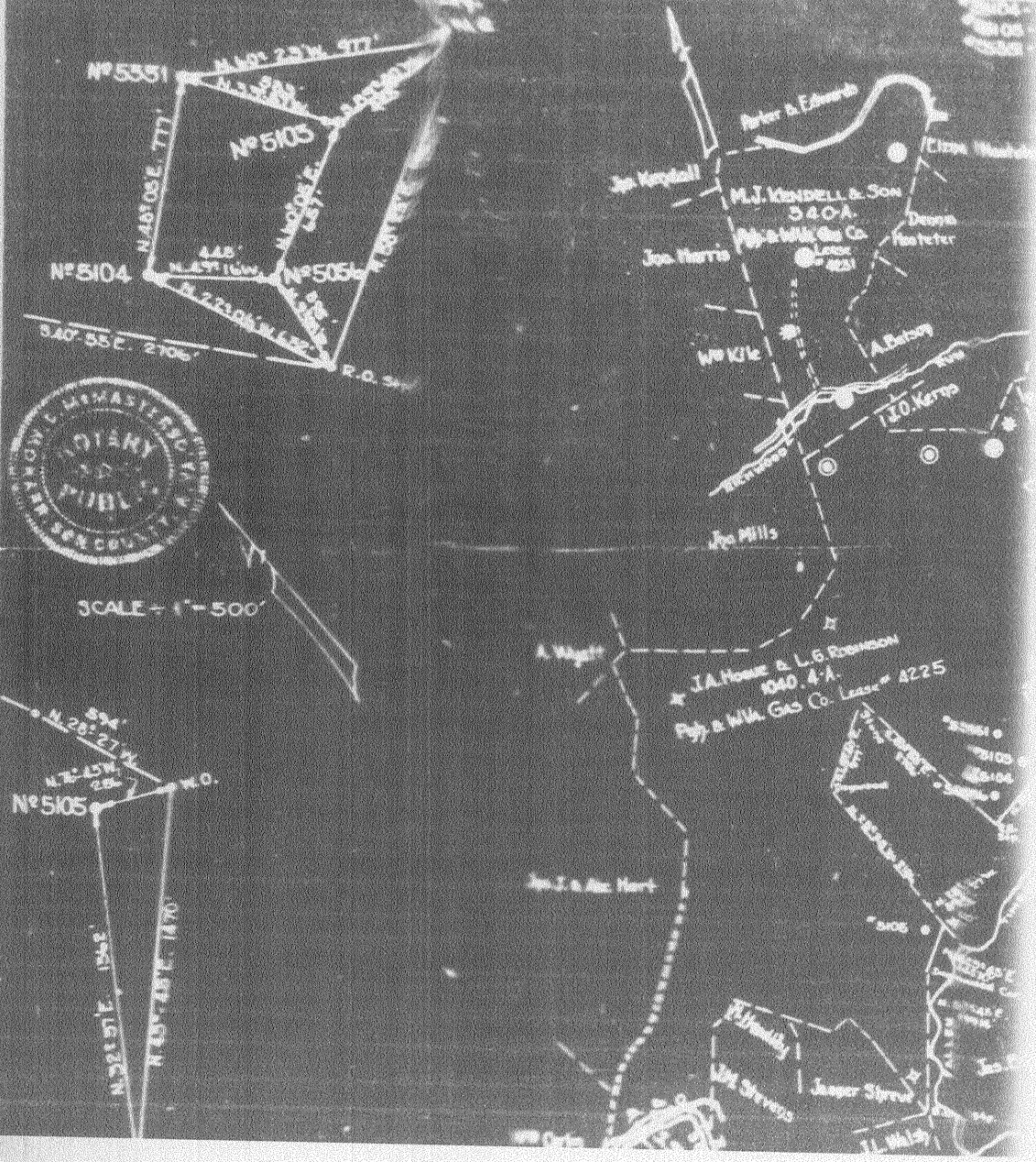


30197

LOCATION OF WELL No. 5103, 5104, 5105 & 5106 TO BE ABANDONED

LEROY CASSADY
P.G. & W.M. GAS CO.
LEASE NO. 4225 LESSOR J.A. HOUSE & L.B. ROBINSON
DISTRICT GRANT COUNTY NETZEL

CTR. QUADRANGLE LITTLETON DATE OCT 22, 1935



Grant District, Wetzel County, W. Va.

By Leroy Cassady, Reno, Ohio.

Abandoned under permit Wet-197, issued 5-22-36. (May report).

Elevation, 1176' L.

Completed, Dec. 11, 1914.

Record filed with Dept. of Mines May 18, 1938. (Not on DM form).

Record to RCT from Mrs. Griffith Sept. 16, 1938.

Pittsburgh & W. Va. Gas Co. well.

	Top.	Bottom.
Coal	463	468
Coal	598	604
Pittsburgh Coal	964	972
Lime	972	1052
Slate	1052	1127
Red rock	1127	1200
Slate and shells	1200	1225
Red rock	1225	1250
Little Dunkard Sand	1250	1285
Lime	1285	1310
Slate	1310	1330
Red rock	1330	1340
Slate and shells	1340	1400
Slate	1400	1445
Big Dunkard Sand	1445	1457
Red rock	1457	1480
Slate and shells	1480	1505
Gas Sand	1505	1565
Slate	1565	1760
1st Salt Sand	1760	1825
Slate	1825	1880
Salt Sand	1880	2020
Red rock	2020	2045
Lime	2045	2110
Red rock	2170	2180
Lime	2180	2192
Slate	2192	2210
Little Lime	2210	2218
Pencil Cave	2218	2223
Big Lime	2223	2260
Big Injun Sand (gas at 2271-2281')	2260	2445
Gordon Stray Sand	3007	3033
Gordon Sand	3085
Total depth		3100