

39° 32' 30"

Latitude

80° 32' 30"

Longitude

1.46s  
1.50w

Topo Location

7.5' Loc. \_\_\_\_\_ 15' Loc. \_\_\_\_\_  
(calc.) \_\_\_\_\_

Company Leroy Cassidy

Farm ROBINSON + Hoge 5104

15' Quad \_\_\_\_\_  
(sec.)

7.5' Quad Big Run

District GRANT

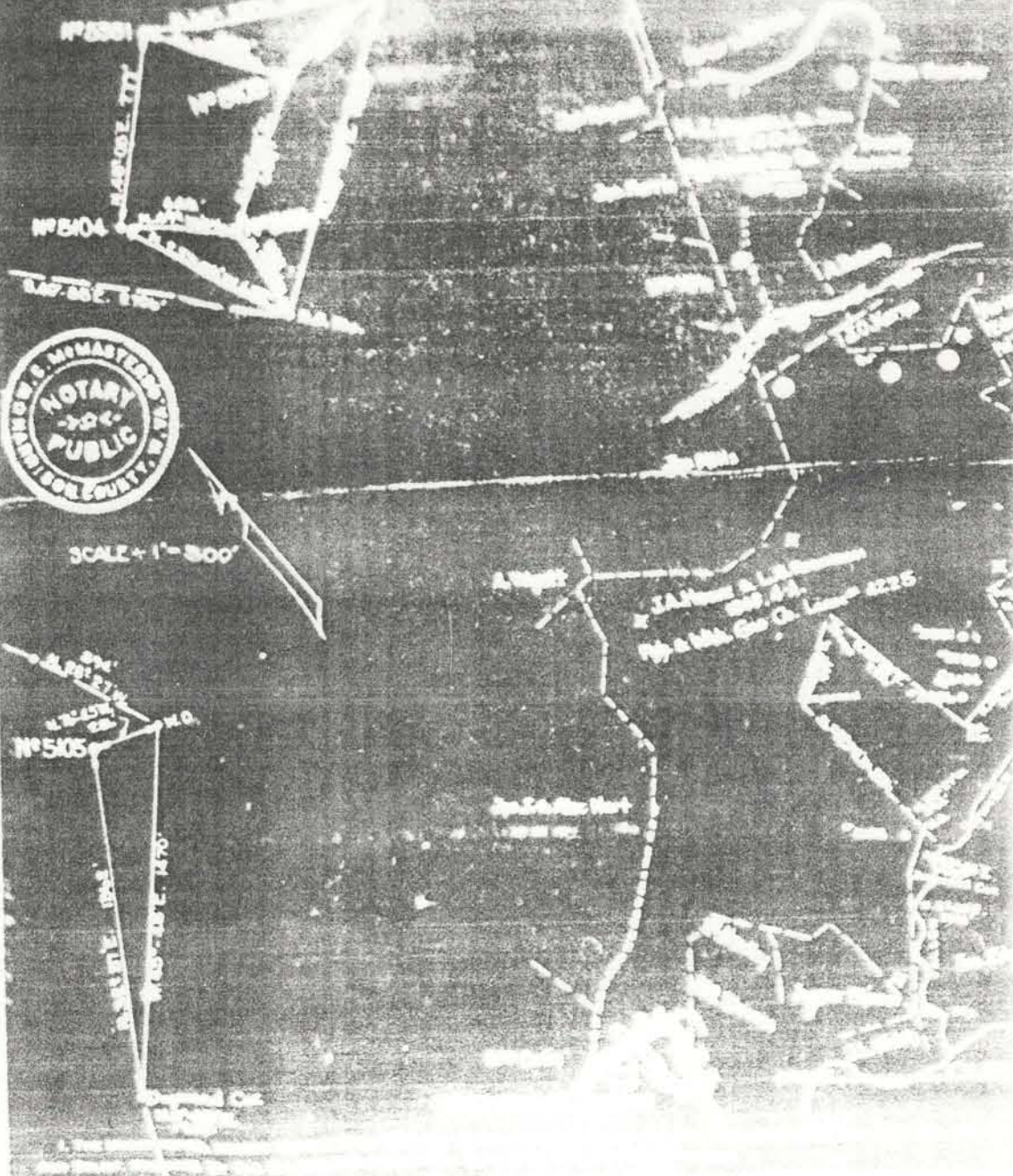
WELL LOCATION PLAT

County 103 Permit 30189

1898  
No. 5001

DISTRICT

vs. *et al.*



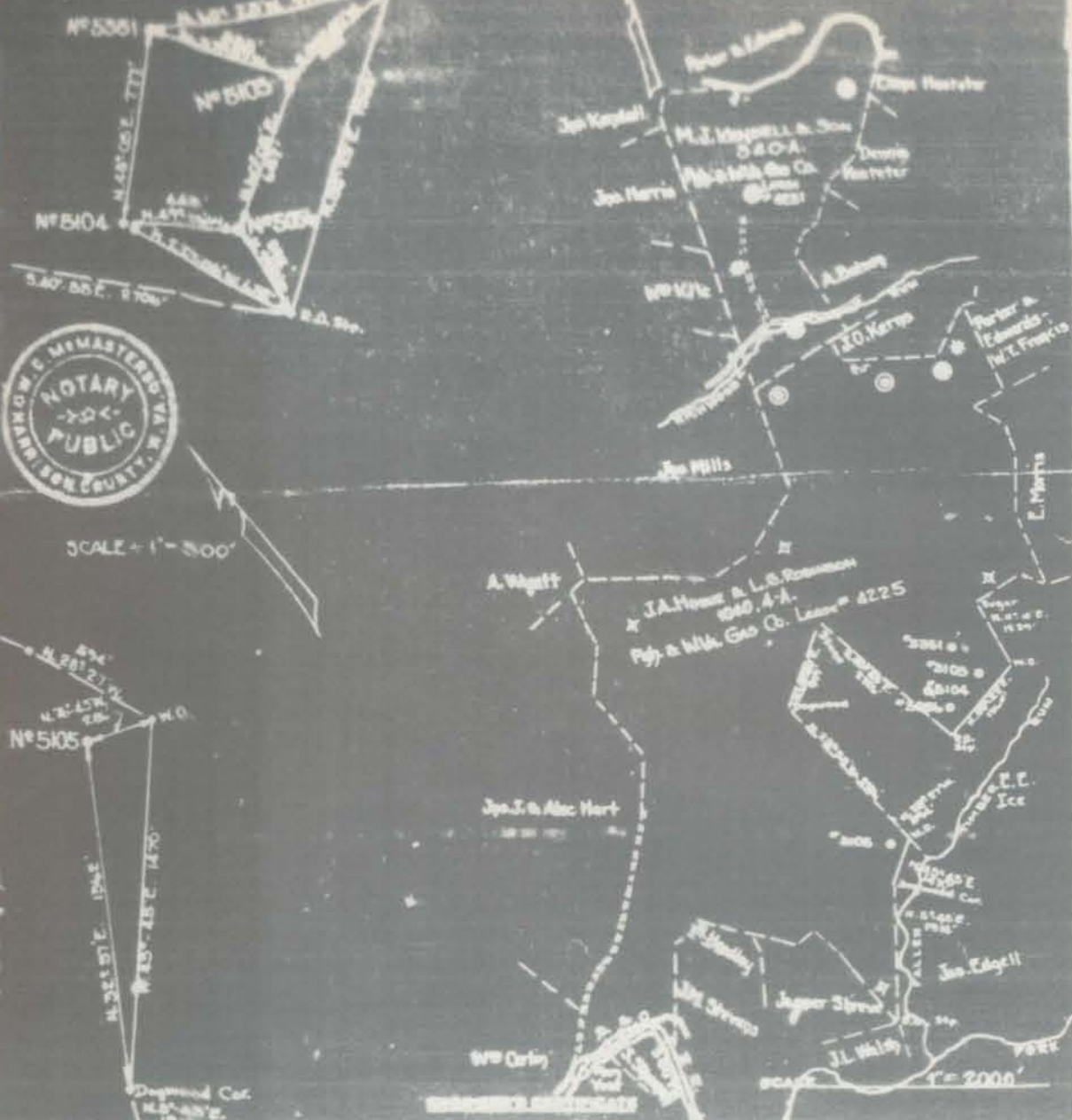
SCALE - 1" = 300'

No. 5005  
S. 45° 00' E. 175'  
175'

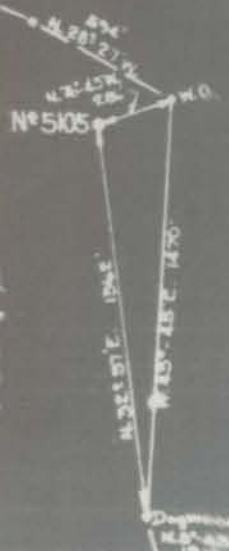
JAMES A. L. Hart  
S. 45° 00' E. 175'  
175'

30189

LEROY CASSADY  
 FOR E. & B. GAS CO.  
 DISTRICT GRANT COUNTY W. VA.  
 OCTOBER 1928



SCALE = 1" = 300'



I, THE UNDERSIGNED, HEREBY CERTIFY THAT THIS MAP IS CORRECT AND SHOWS ALL THE INFORMATION TO THE BEST OF MY KNOWLEDGE AND BELIEF, RECEIVED BY THE OIL AND GAS SECTION OF THE MINES LAWS OF WEST VIRGINIA.

Grant District, Wetzel County, W. Va.

By Hervey Cassady, Reno, Ohio.

Abandoned under permit Wet-189, issued 2-20-36. (Feb. report).

Elevation, 1165' L.

Pittsburgh &amp; W. Va. Gas Co. well.

Completed March 18, 1915.

10" casing, 510' (reclaimed); 8 $\frac{1}{2}$ ", 1435'; 6 $\frac{3}{8}$ ", 2200'; 5 $\frac{3}{8}$ ", 2784';

2" tubing, 3116' (?). (3016?)

Record to Dept. of Mines not dated. (DM form not used).

Record to RCF from Mrs. Griffith Sept. 16, 1938.

	Top.	Bottom.
Shale	440	444
Slate and shells	444	530
Red rock	530	540
Lime	540	570
Shale	570	575
Bluff Sand	575	615
Red rock	615	640
Slate and shells	640	710
Lime	710	720
Slate	720	760
Lime	760	840
Slate and shells	840	910
Sand	910	927
Shale	927	938
Pittsburgh Coal	938	946
Lime and slate	946	1005
Sand	1005	1020
Slate	1020	1065
Red rock	1065	1143
Slate and shells	1143	1173
Red rock	1173	1223
Slate and shells	1223	1243
Red rock	1243	1280
Slate and shells	1280	1410
Big Dunkard Sand	1410	1440
Lime	1440	1490
Slate	1490	1555
Lime	1555	1600
Gas Sand	1600	1660
Sand	1660	1755
1st Salt Sand	1755	1815
Sand	1815	1890
Slate	1890	1910
Sand	1910	1960
2nd Salt Sand	1960	2000
Slate and lime	2000	2060
Maxton Sand	2060	2070
Red rock	2070	2132
Lime	2132	2143
Slate	2143	2152
Lime	2152	2157
Pencil Cave	2157	2160
Big Lime	2160	2247
Big Injun Sand	2247	2445
Slate and shells	2445	2784
50-Ft. Sand	2784	2792
Slate and shells	2792	3002
Gordon Stray Sand (oil at 3016')	3002	3024
Total depth		3094 $\frac{1}{2}$