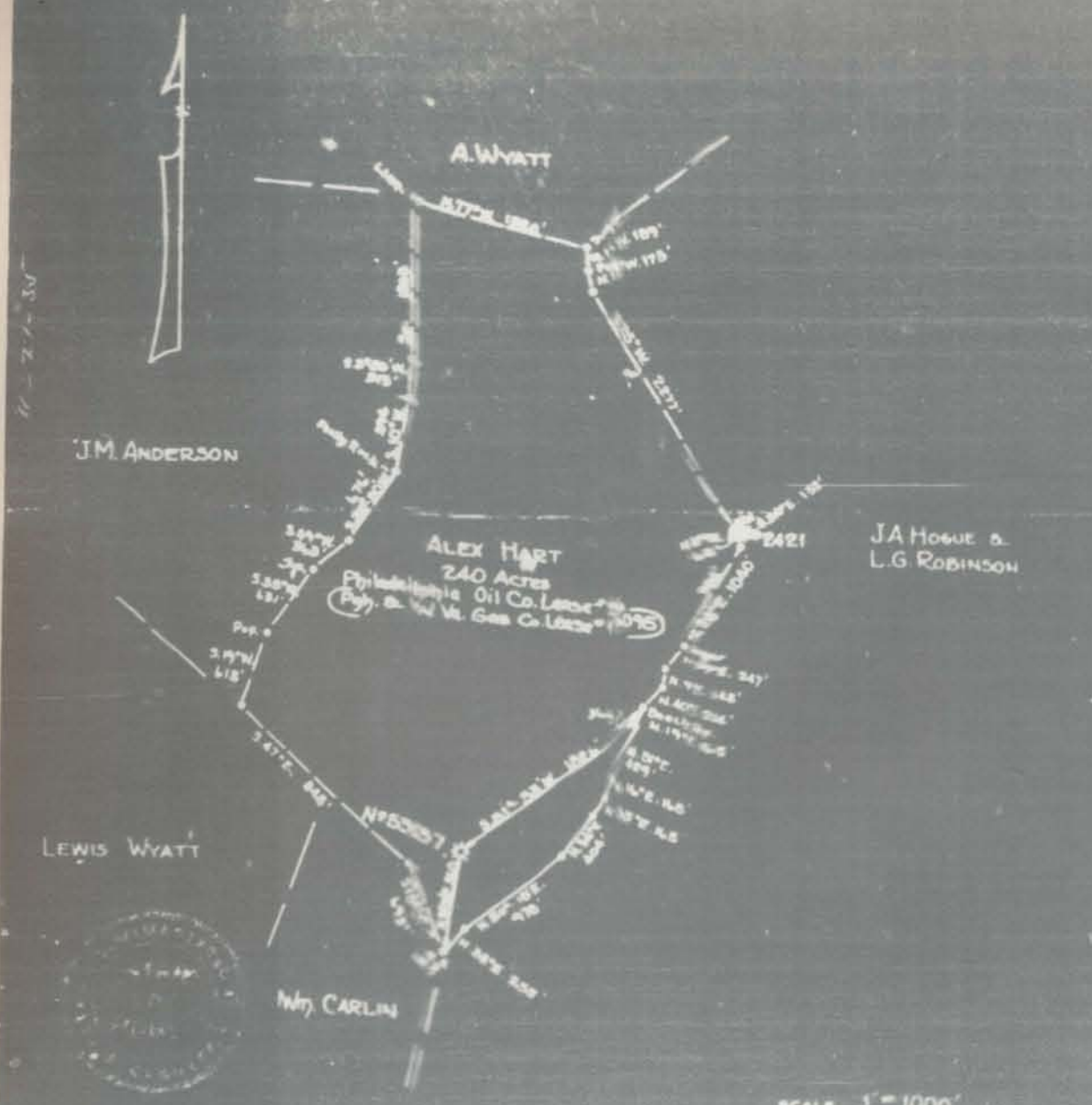


PHIL. OIL CO. LEASE NO. 56 LESSOR ALEX HART ACRES 240
 DISTRICT GRANT COUNTY WETZEL STATE W. VA.
 QTR. QUADRANGLE LITTLETON S.E. 36 DATE OCT 28 1935 ELEVATION 1053.1



ENGINEER'S CERTIFICATE

SCALE 1" = 1000'

I, THE UNDERSIGNED, HEREBY CERTIFY THAT THIS MAP IS CORRECT AND SHOWS ALL THE INFORMATION TO THE BEST OF MY KNOWLEDGE AND BELIEF, REQUIRED BY THE OIL AND GAS SECTION OF THE MINING LAWS OF WEST VIRGINIA.

[Handwritten signature]

Grant District, Wetzel County, W. Va.

By Leroy Cassady, Reno, Ohio.

Abandoned under permit Wet-183. (Issued Nov. 25, 1935).

Completed, March 12, 1923.

10" casing, 419'; 8 $\frac{1}{2}$ "⁵, 1385'; 6 $\frac{3}{8}$ "⁵, 2117'; conductor, 12'.

Typewritten record on blank sheet of paper; Dept. Mines form not used.

Record to RGT from Mrs. Griffith Sept. 10, 1938.

	Top.	Bottom.
Sand	350	360
Coal	370	373
Coal	512	515
Sand	570	600
Coal	616	620
Lime	620	675
?	690	750
Coal	798	800
Pittsburgh Coal	872	878
Lime	878	935
Slate and shells	935	960
Red rock	960	980
Lime	980	1030
Lime and red rock	1030	1110
Slate and shells	1110	1155
Red rock	1155	1175
Lime	1175	1187
Pink rock	1187	1193
Lime	1193	1212
Pink rock	1212	1230
Slate	1230	1250
Red rock	1250	1272
Lime	1272	1298
Slate	1298	1312
Lime	1312	1318
Slate	1318	1364
Lime and shells	1364	1368
Slate	1368	1394
Big Dunkard Sand	1394	1450
Slate	1450	1462
Gas Sand	1462	1500
?	1500	1505
Sand	1505	1575
Slate	1575	1582
Lime	1582	1604
Slate	1604	1610
Lime	1610	1614
Slate	1614	1745
1st Salt Sand	1745	1780
Slate	1780	1804
Lime	1804	1818
Slate	1818	1855
Lime	1855	1868
2nd Salt Sand	1868	1912
Slate	1912	1975
Lime	1975	1987
Red rock	1987	2035

Ba

(OVER)

ALEX HART NO. 5337 WELL (Continued).

	Top.	Bottom.
Slate	2035	2041
Lime	2041	2048
Slate	2048	2066
Maxton Sand	2066	2078
Slate	2078	2101
Lime	2101	2109
Pencil Cave	2109	2111
Big Lime	2111	2168
Big Injun Sand (oil and gas, 2187')	2168
Total depth		2190