

39°30'00"

Latitude

80°30'00"

Longitude

2.215
.01w

Topo Location

7.5' Loc. _____ 15' Loc. _____
_____ (calc.) _____

Company South Penn Oil Co.

Farm GENINE ROBINSON #22

15' Quad _____
(sec.)

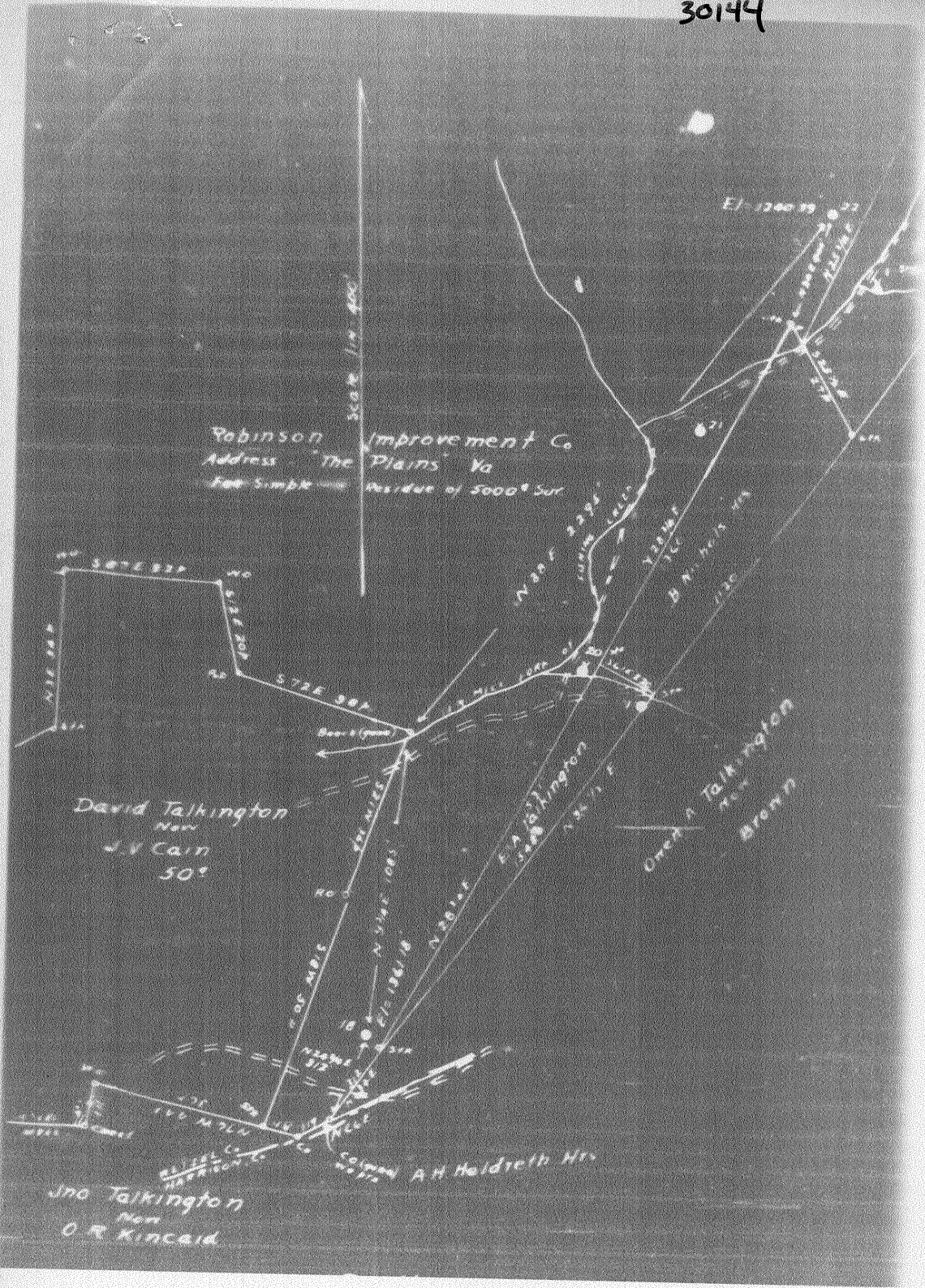
7.5' Quad Folsom

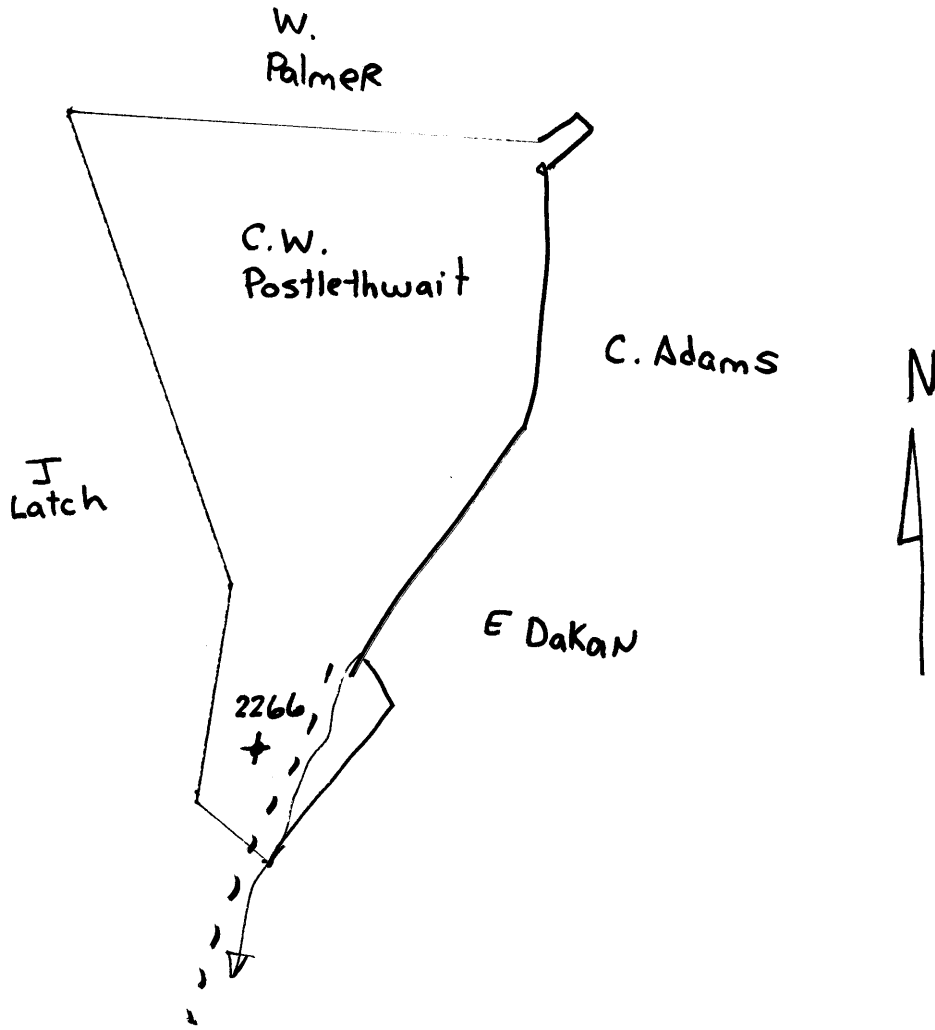
District GRANT

WELL LOCATION PLAT

County 103 Permit 30144

30144





GEMINE ROBINSON NO. 22 WELL.

No. 441 O.F. (Wetzel)

Wet-144-A

Grant District, Wetzel County, W. Va.

South Penn Oil Co., Chamber of Commerce Bldg., Pittsburgh, Pa.

On 2700 acres, surface and mineral rights owned by Robinson

Improvement Co., The Plains, Virginia.

Elevation, 1240.39' L.

16' conductor; 10" casing, 287' (pulled); 8½", 1526'; 6-5/8", 2409'.

Coal was encountered at 1106-1109'.

Liner: 16½" 8" of 5½" x 5".

Abandonment reported to Dept. of Mines April 15, 1935.

Well was shot 7-20-09, with 30 qts.

Oil well.

	Top.	Bottom.
Pittsburgh Coal	1106	- 1109
Dunkard Sand	1700	- 1752
Salt Sand	1970	- 2045
Pencil Cave	2321	- 2326
Big Lime	2326	- 2374
Big Injun Sand	2374	- 2476
30-Ft. Sand	2840	- 2960
50-Ft. Sand	2985	- 3020
30-Ft. Sand	3055	- 3085
Stray Sand (oil, 3180')	3140	- 3195
Slate	3200	
Gordon Sand	3205	
Total depth		3223