

Latitude

+ .57s
.55w

Longitude

Topo Location

7.5' Loc. _____ 15' Loc. _____
_____ (calc.) _____

Company unknown

Farm Baxter #1

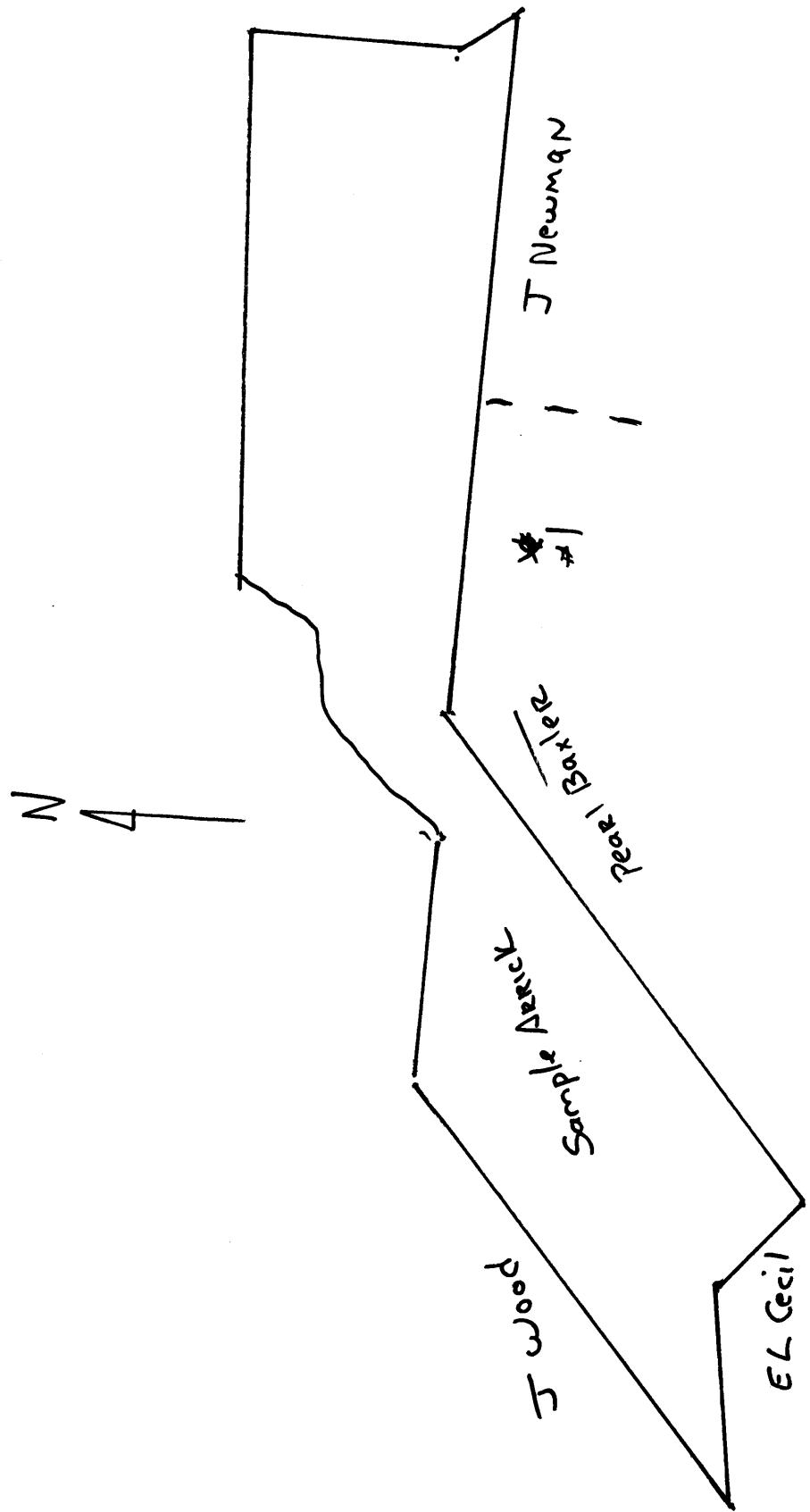
15' Quad _____
(sec.)

7.5' Quad New Martinsville

District Proctor

WELL LOCATION PLAT

County 103 **Permit** 30135



Proctor District, Wetzel County, W. Va.

By The Wiser Oil Co., Sistersville, W. Va.

On 86 acres, surface owned by Pearl A. Baxter, Proctor, W. Va.,

and mineral rights by Pearl A. Baxter et al., Proctor, W. Va.

No elevation given.

6-5/8" casing, 1775'.

Coal was encountered at 760'.

Abandonment reported to Dept. of Mines May 8, 1934.

WET-135-A

"An old abandoned well, now mostly full of water, is on the Pearl A. Baxter farm. Complete details of the drilling of the well and the log of the well can not be found. The best information to be had is to the effect that the well was drilled in 1923, by the Proctor Oil and Gas Company, to and into the Maxton gas sand at a depth of approximately 1775 feet; that 6-5/8" casing was set at or near the bottom of the hole in an endeavor to shut off water and produce the sand; that they were unable to shut off the water and the well was left in this condition with the 6-5/8" casing set at around 1775 feet, and the water coming in behind the same, and the well remains at this time mostly full of water; that the Pittsburgh Coal seam was penetrated at approximately 760 feet, the thickness of which is not ascertainable."

Wet 135A

BAXTER NO. 1 WELL.

No. 332 O.F.-Wetzel.

Proctor District, Wetzel County, W. Va.
Completed Feb. 1, 1923.

10" casing, 500'; 8 1/2", 1314'; 6-5/8", 1775'.
Authority, Earl M. Hennen, 5-23-34.

	Top.	Bottom.
Native coal		360
Mapletown (Sewickley) Coal		670
Pittsburgh Coal		760
Little Dunkard Sand	1170	1200
Big Dunkard Sand	1295	1303
Gas Sand	1312	1360
1st Salt Sand	1380	1400
2nd Salt Sand (water, 1515')	1495	1530
3rd Salt Sand	1675	1748
Maxton gas		1775
Total depth		1775