

39° 42' 30"

Latitude

80° 32' 30"

Longitude



1.08s
1.37w

Topo Location

7.5' Loc. _____ 15' Loc. 3.96S
_____ (calc.) 3.59W

Company Manufact Lt+Ht

Farm Jennie Furbee # 2765

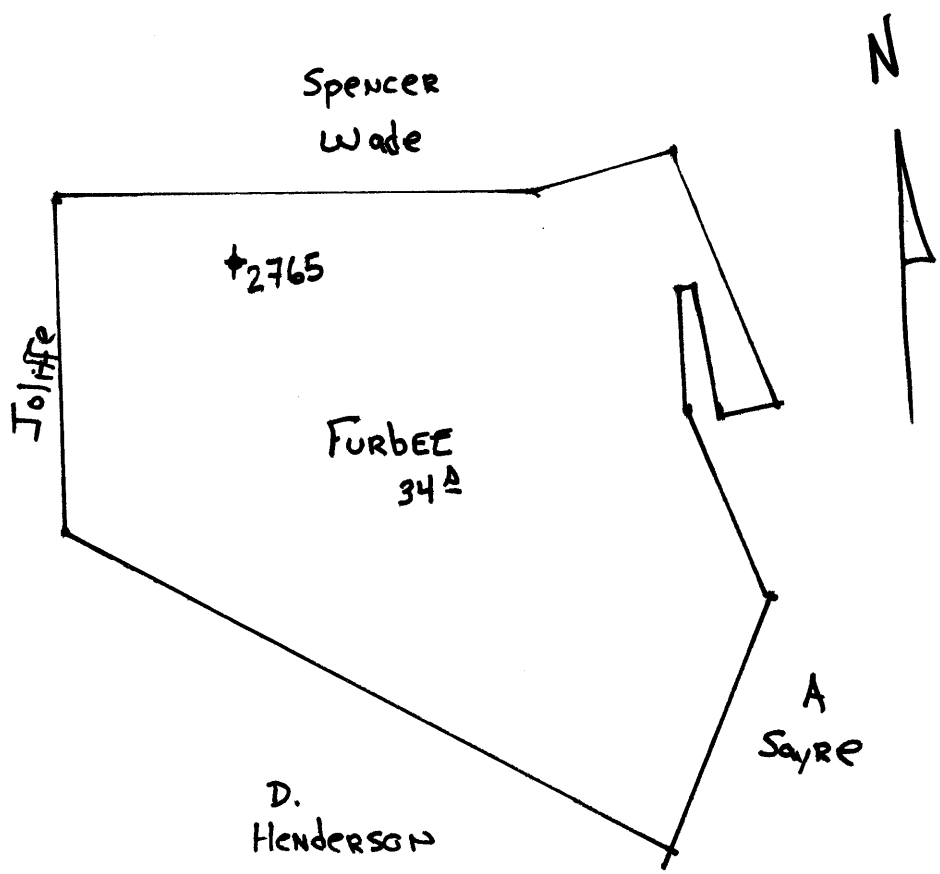
15' Quad Littleton NE
(sec.)

7.5' Quad Littleton

District Center

WELL LOCATION PLAT

County 103 **Permit** 30104



Center District, Wetzel County, W. Va.

By The Manufacturers Light & Heat Co., 800 Union Trust Bldg.,
Pittsburgh, Pa.On $\frac{3}{4}$ acres, surface owned by Jennie Furbee et al., Box 55,
Littleton, W. Va., and mineral rights by ML&H Co., Pgh., Pa.

Drilled prior to June 1, 1929.

Elevation, 1274' L.

13" conductor, 16'; 10" casing, 335' 9"; 8 $\frac{1}{2}$ ", 1571' 6"; 6-5/8",
2269'; 4" tubing, 2329' 6"; 2" tubing, 3366'.

Packer, 4 x 6-5/8, set at 2258'.

Coal was encountered at 684-686, 965-969, and 1076-1082'.

Abandonment reported to Dept. of Mines Aug. 24, 1933.

	Top.	Bottom.	Thickness.
Clay	0	- 50	50
Lime	150	- 200	50
Red rock	200	- 225	25
Sand	225	- 250	25
Lime	250	- 300	50
Slate	315	- 335	20
Slate and lime	335	- 500	165
Sand	500	- 525	25
Slate	525	- 550	25
Lime	550	- 600	50
Coal	684	- 686	2
Lime	686	- 700	14
Mapletown (Sewickley) Coal	965	- 949	4
Pittsburgh Coal	1076	- 1082	6
Lime	1082	- 1182	100
Murphy Sand	1200	- 1220	20
Red rock	1220	- 1240	20
Red rock	1350	- 1400	50
Little Dunkard Sand	1460	- 1475	15
Sand	1482	- 1518	34
Big Dunkard Sand	1558	- 1600	42
Gas Sand	1715	- 1790	75
1st Salt Sand (water at 1866')	1846	- 1874	28
2nd Salt Sand (water at 1988 & 2008')	1928	- 2018	90
Red rock	2164	- 2196	32
Little Lime	2200	- 2229	29
Pencil Cave	2229	- 2235	6
Big Lime	2235	- 2283	48
Big Injun Sand (gas at 2293-2310'; 54' 3" anchor under packer)	2283	- 2313	50
Total depth		2313	
DRILLED DEEPER			
Big Injun Sand	(2313?)	2413 - 2522	109 (209)
Red rock		3106 - 3112	6
Gordon Stray Sand		3112 - 3121	9
Gordon Sand (show of gas at 3132')		3124 - 3156	32
Slate and shells		3156 - 3210	54
4th Sand		3210 - 3220	10
Slate		3220 - 3250	30
Sand and shells		3250 - 3275	25
Slate		3275 - 3337	62
Total depth		3337	

(12/10 water in 2" opening when
well was completed) 146 mcf