

39°35'00"

80°42'30"

Latitude

+

.38s
2.14w

Longitude

Topo Location

7.5' Loc. _____ **15' Loc.** _____
_____ **(calc.)** _____

Company HARRISON Ritchie O+G Co

Farm AMANDA CROSS

15' Quad _____
(sec.)

7.5' Quad PINE GROVE

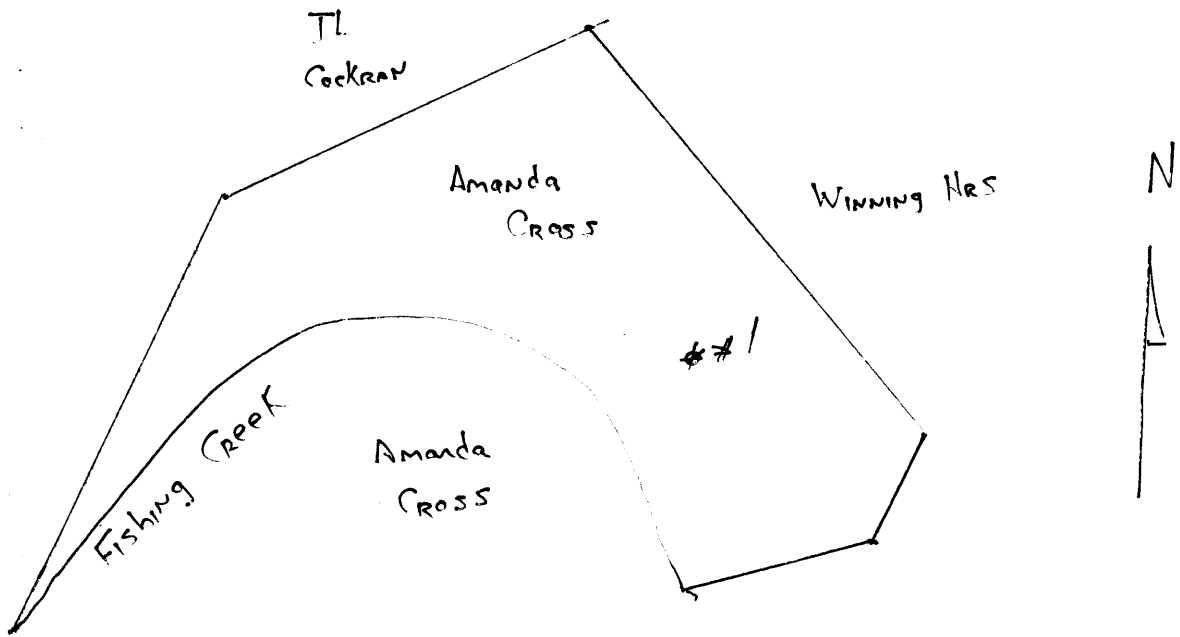
District GREEN

WELL LOCATION PLAT

County 103 **Permit** 30102

30102

Green



Green District, Wetzel County, W. Va.

By Harrison Ritchie Oil & Gas Co., Pennsboro, W. Va. (J.W.Kerns, Mgr.)

On 44 acres, surface and minerals owned by Amanda Cross, Reader, W. Va.

Drilled before permit required (June 1, 1929).

Elevation, 685.79' L.

13" conductor, 16'; 10" casing, 220'; 8 $\frac{1}{4}$ ", 1027'.

No coal was encountered.

Abandonment reported to Dept. of Mines May 11, 1933.

Abandoned under permit Wet-102.

Well was not shot. Gas well.

Record to RCT from Mrs. Griffith Sept. 10, 1938.

WET-102-A

	Top.	Bottom.
Rock and slate, dark	0	516
Slate, dark	516	1030
Dunkard Sand	1030	1070
Slate, dark	1070	1272
Salt Sand	1272	1290
Slate, brown	1290	1518
Maxton Sand, light (gas, 1522')	1518	1564
Total depth		1564