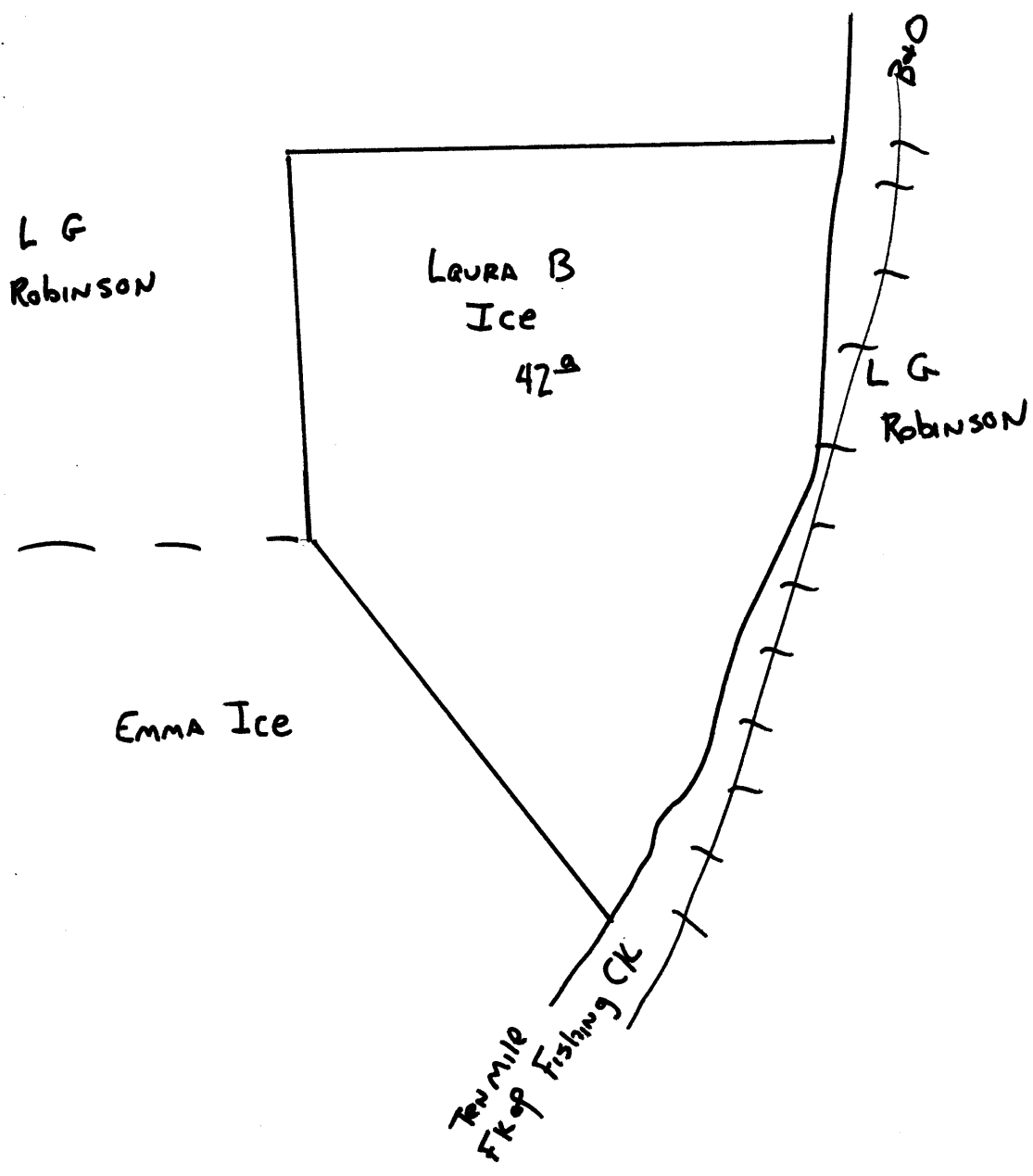


30076
GRANT



Grant District, Wetzel County, W. Va.

By South Penn Oil Co., Drawer 1255, Pittsburgh, Pa.

On 42 acres, surface owned by Albert Edgell, Route 1, Folsom, W. Va.,
and mineral rights by L. B. Ice, Folsom, W. Va.

Elevation, 1161' L.

16' conductor; 10" casing, 240'; 8 $\frac{1}{2}$ " 1481'; 6-5/8" 2263'; 5-3/16" 2433'.

Coal was encountered at 1020-1030'.

185' (9 jts.) of 4 $\frac{1}{2}$ x 4" liner.

Abandonment reported to Dept. of Mines July 10, 1931.

Well was shot twice (depth not known).

Oil well.

| | Top. | Bottom. |
|--------------------------|------|---------|
| Wood conductor | 0 | 16 |
| Pittsburgh Coal | 1020 | 1030 |
| Big Dunkard Sand | 1475 | 1490 |
| Salt Sand | 1860 | 2025 |
| Pencil Cave | 2212 | 2218 |
| Big Line | 2218 | 2285 |
| Big Injun Sand | 2285 | 2400 |
| 50-Ft. Sand | 2850 | 2885 |
| 30-Ft. Sand | 2935 | 2990 |
| Stray Sand (oil, 3075') | 3056 | 3093 |
| Gordon Sand (oil, 3108') | 3101 | 3124 |
| Total depth | | 3125 |

WET-76-A