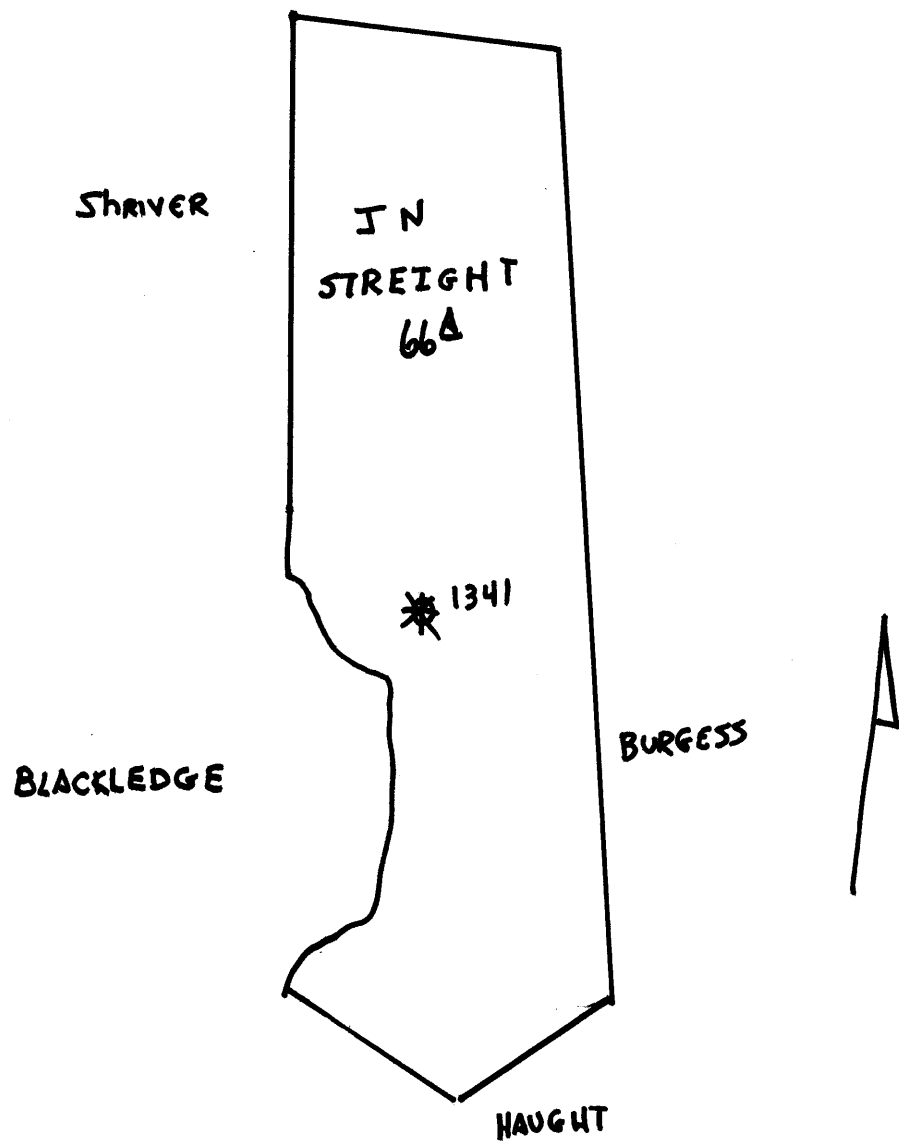




30074

GREEN



Green District, Wetzel County, W. Va.

By The Manufacturers Light & Heat Co., 600 Union Trust Bldg.,  
Pittsburgh, Pa.

On 66 acres, surface owned by J. N. Straight, Reader, W. Va.,  
and mineral rights by WLAHCo., Pgh., Pa.

Elevation, 521' L.

10" casing.....; 8".....; 6-5/8", 2000'; 5-3/16". 2000'?????

Coal was encountered at 520'.

Abandonment reported to Dept. of Mines Dec. 31, 1931.

Drilled prior to June 1, 1929.

Pulled 10", 8" and 6-5/8" casing; left in 2000' of 5-3/16".

70 lbs. first min. in 5-3/16".

Shot with 60 qts. and after blowing 30 days,

3" - 1/95 - 2/140 - 3/175 - 4/205, 5/235.

Sold to WLAHCo. 9-10-04.

Test 4-2104 - 1/115 - 2/155 - 3/220 - 4/255 - 5/300 - 15/445.

Rock pressure, 495 lbs.

WET-74-A

	Top.	Bottom.
Pittsburgh Coal	520	
Gordon Sand	2620	
Total depth		2772