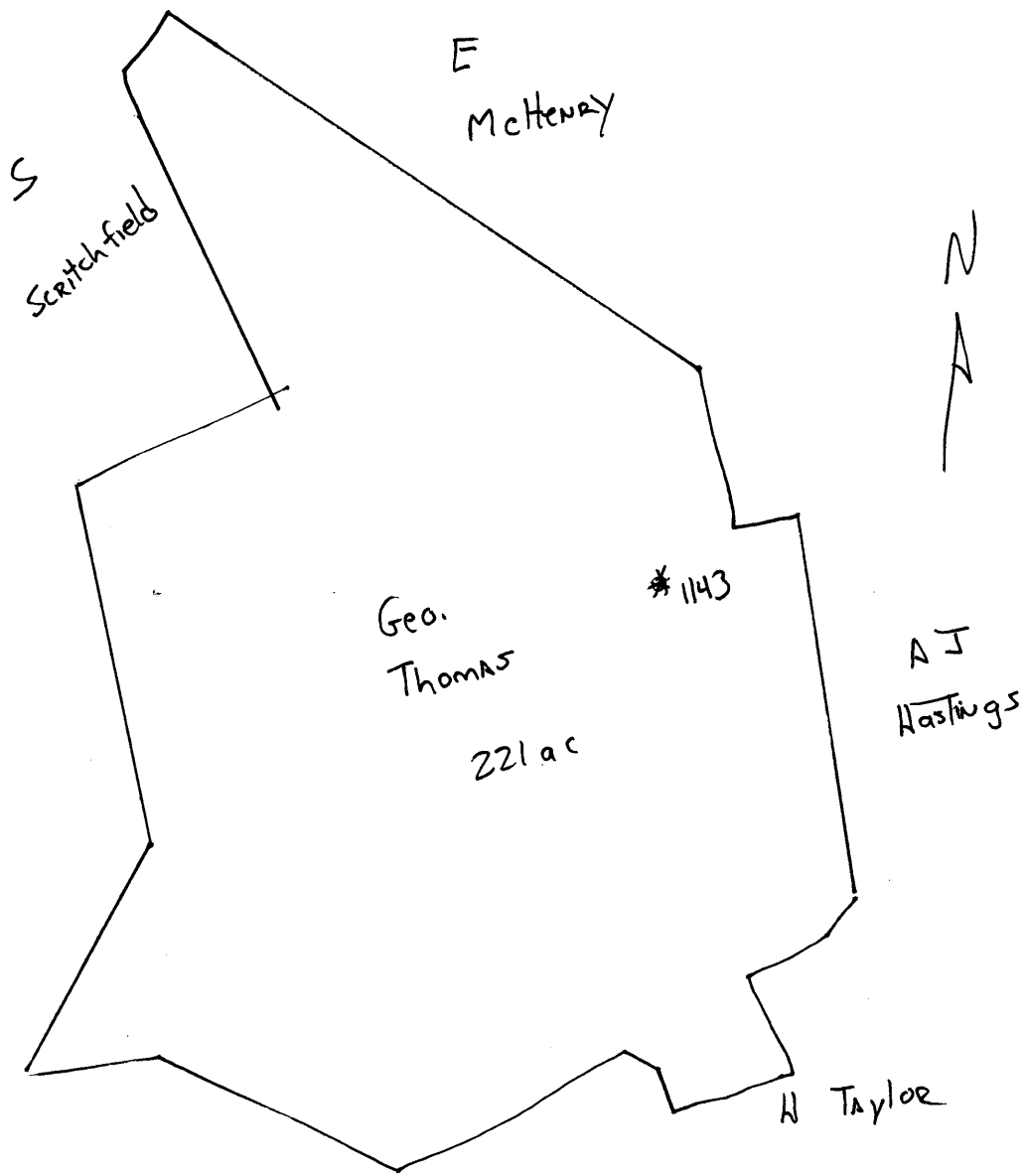


3057
Church



Wet-57-A

Church District, Wetzel County, W. Va.

By The Manufacturers Light & Heat Co., 800 Union Trust Bldg.,
Pittsburgh, Pa.On 227 acres, surface owned by G. W. Thomas, Hundred, W. Va., and
mineral rights by ML&H Co., Pittsburgh, Pa.

Drilled prior to June 1, 1929.

Elevation, 1130' F.

14' conductor; 8 $\frac{1}{2}$ " casing, 40'; 6-5/8", 2048'.

Coal was encountered at 735 and 835; thickness not stated.

Abandonment reported to Dept. of Mines June 24, 1931.

Well was shot at 2130-72', with 100 qts.

Gas well.

	Top.	Bottom.	Thickness.
Native coal	335		
Mapletown (Sewickley) Coal	735		
Pittsburgh Coal	835		
Little Dunkard Sand	1185		
Big Dunkard Sand	1315		
Gas Sand	1400		
1st Salt Sand	1550		
2nd Salt Sand	1750		
Maxton Sand	1905		
Little Lime	1995		
Pencil	2005		
Big Lime	2010		
Big Injun Sand (gas, 2130 & 2172')	2095 - 2330		235
Gantz Sand	2740		
50-Ft. Sand	2825		
30-Ft. Sand	2855 - 2880		25
Gordon Stray Sand	2890 - 2920		30
Gordon Sand	2962 - 2999		37
Fourth Sand	3009		
Sand and shells	3127		
Slate and shells	3440		