

Well#7806  
BIG RUN WV 7.5' Quad  
Scale: 1" = 500'



PIPELINE

624

1400

Well#7806

1100

RECEIVED  
Office of Oil and Gas

AUG 16 2024

WV Department of  
Environmental Protection

1473

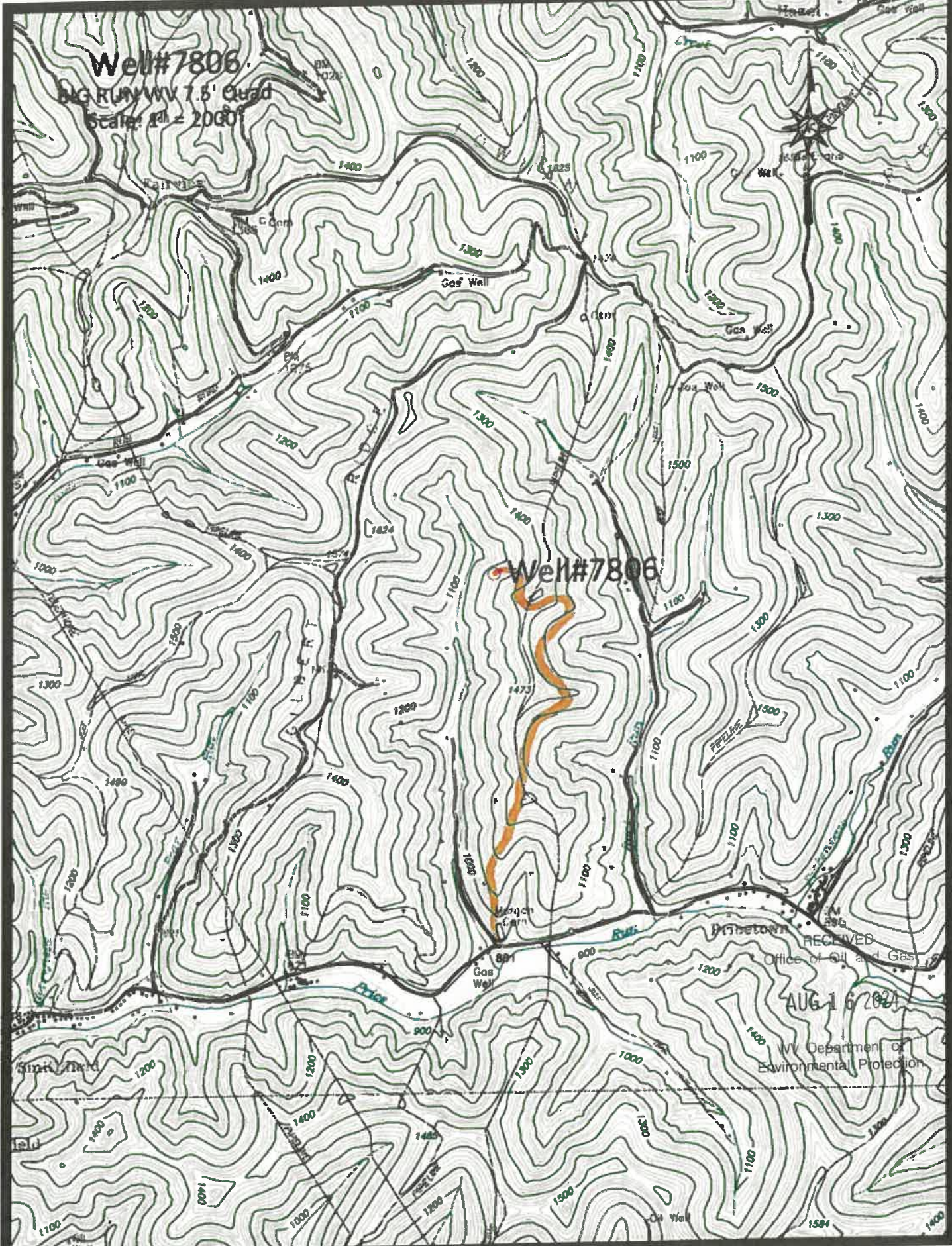
1200

— Access Road

08/30/2024

47 10303680P


Well#7806  
BIG RUN WV 7.5' Quad  
Scale: 1" = 2000'



RECEIVED  
Office of Oil and Gas

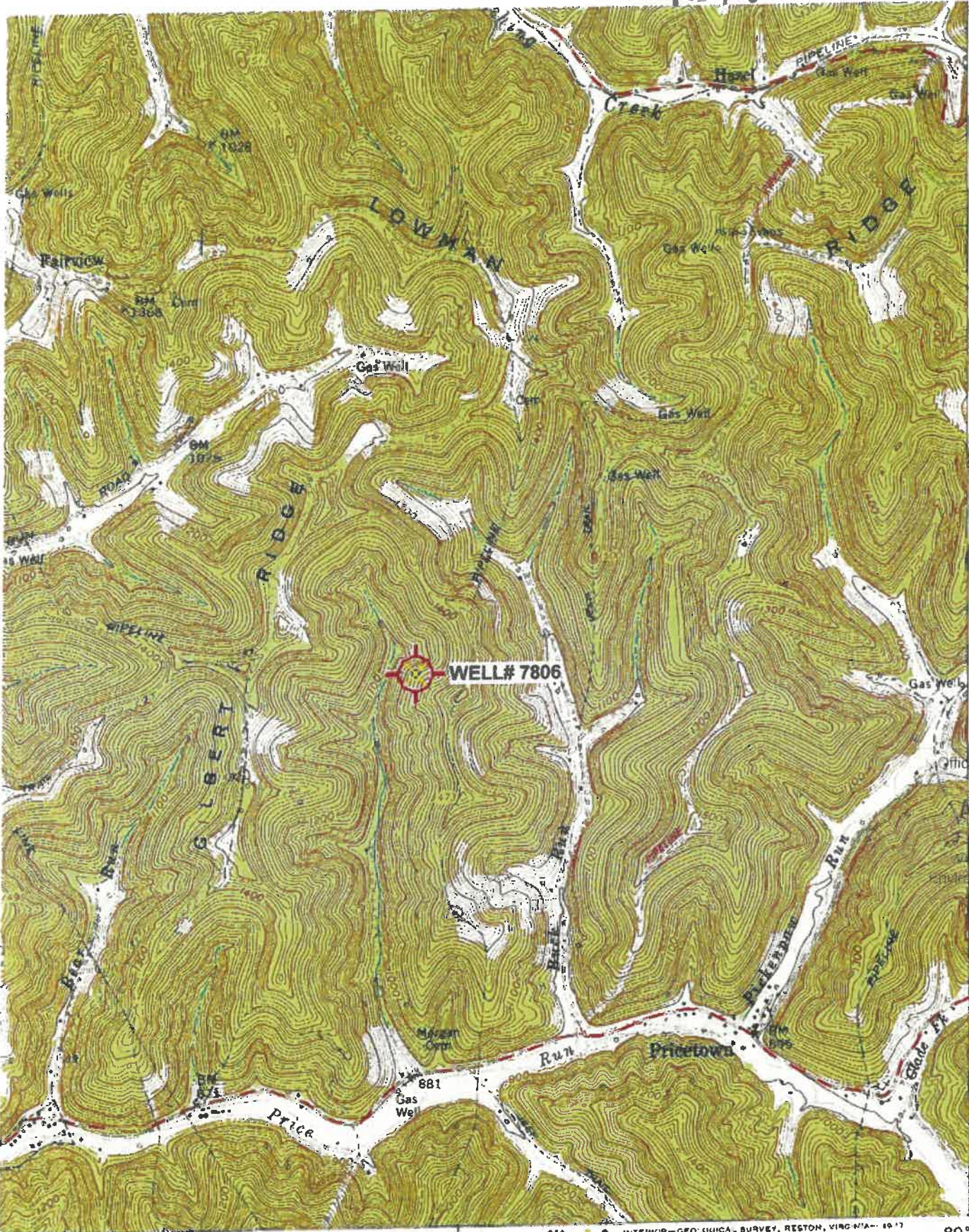
AUG 16 2021

WV Department of  
Environmental Protection

 Access Road

08/30/2024

4710303680P



4371  
32'30"

4376

4375

RECEIVED  
Office of Oil and Gas

AUG 16 2024

4374

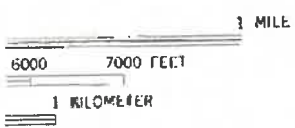
Department of  
Environmental Protection

4373

39°30'  
80°30'

39 32'30" 40 41

INTERIOR—GEOLOGICAL SURVEY, RESTON, VIRGINIA—1977  
642000E



ROAD CLASSIFICATION

- Heavy-duty
- Medium-duty
- Light-duty
- Unimproved dirt

Slate Route

(WALLACE)  
682 N NW

08/30/2024

'Big Run; WV' Scale: 1" = 0.379Mi 610Mt 2,000Ft, 1 Mi = 2.640", 1 cm = 240Mt

47.10303680P

WW-7  
8-30-06



West Virginia Department of Environmental Protection  
Office of Oil and Gas  
**WELL LOCATION FORM: GPS**

API: 47-103-30600 WELL NO.: 7806

FARM NAME: B W PETERSON 50

RESPONSIBLE PARTY NAME: WEST VIRGINIA LAND RESOURCES INC.

COUNTY: WETZEL DISTRICT: GRANT

QUADRANGLE: BIG RUN WV

SURFACE OWNER: DALLISON LUMBER INC.

ROYALTY OWNER: \_\_\_\_\_

UTM GPS NORTHING: 4,374,960 m

UTM GPS EASTING: 540,417 m GPS ELEVATION: 384 m (1260')

RECEIVED  
Office of Oil and Gas

AUG 16 2024

WV Department of  
Environmental Protection

The Responsible Party named above has chosen to submit GPS coordinates in lieu of preparing a new well location plat for a plugging permit or assigned API number on the above well. The Office of Oil and Gas will not accept GPS coordinates that do not meet the following requirements:

- Datum: NAD 1983, Zone: 17 North, Coordinate Units: meters, Altitude: height above mean sea level (MSL) – meters.
- Accuracy to Datum – 3.05 meters
- Data Collection Method:  
Survey grade GPS  : Post Processed Differential

Real-Time Differential \_\_\_\_\_

Mapping Grade GPS \_\_\_\_\_ : Post Processed Differential \_\_\_\_\_

Real-Time Differential \_\_\_\_\_

- Letter size copy of the topography map showing the well location.

I the undersigned, hereby certify this data is correct to the best of my knowledge and belief and shows all the information required by law and the regulations issued and prescribed by the Office of Oil and Gas.

[Signature]  
Signature

PS 2002  
Title

AUGUST 6, 2024  
Date

08/30/2024