

RECEIVED
Office of Oil and Gas

47 103 03 672

MAY 29 2024

WV Department of
Environmental Protection

WW-7
8-30-06



West Virginia Department of Environmental Protection
Office of Oil and Gas

WELL LOCATION FORM: GPS

API: 47-103-70275 WELL NO.: 7447

FARM NAME: F S SNODGRASS 1

RESPONSIBLE PARTY NAME: WEST VIRGINIA LAND RESOURCES INC.

COUNTY: WETZEL DISTRICT: GRANT

QUADRANGLE: GLOVER GAP WV

SURFACE OWNER: EQUITRANS LP

ROYALTY OWNER: _____

UTM GPS NORTHING: 4,376,898 m

UTM GPS EASTING: 543,273 m GPS ELEVATION: 439 m

The Responsible Party named above has chosen to submit GPS coordinates in lieu of preparing a new well location plat for a plugging permit or assigned API number on the above well. The Office of Oil and Gas will not accept GPS coordinates that do not meet the following requirements:

1. Datum: NAD 1983, Zone: 17 North, Coordinate Units: meters, Altitude: height above mean sea level (MSL) meters.
2. Accuracy to Datum - 3.05 meters
3. Data Collection Method:

Survey grade GPS _____: Post Processed Differential _____

Real-Time Differential _____

Mapping Grade GPS X: Post Processed Differential X

Real-Time Differential _____

4. Letter size copy of the topography map showing the well location.

I the undersigned, hereby certify this data is correct to the best of my knowledge and belief and shows all the information required by law and the regulations issued and prescribed by the Office of Oil and Gas.

PS 2002

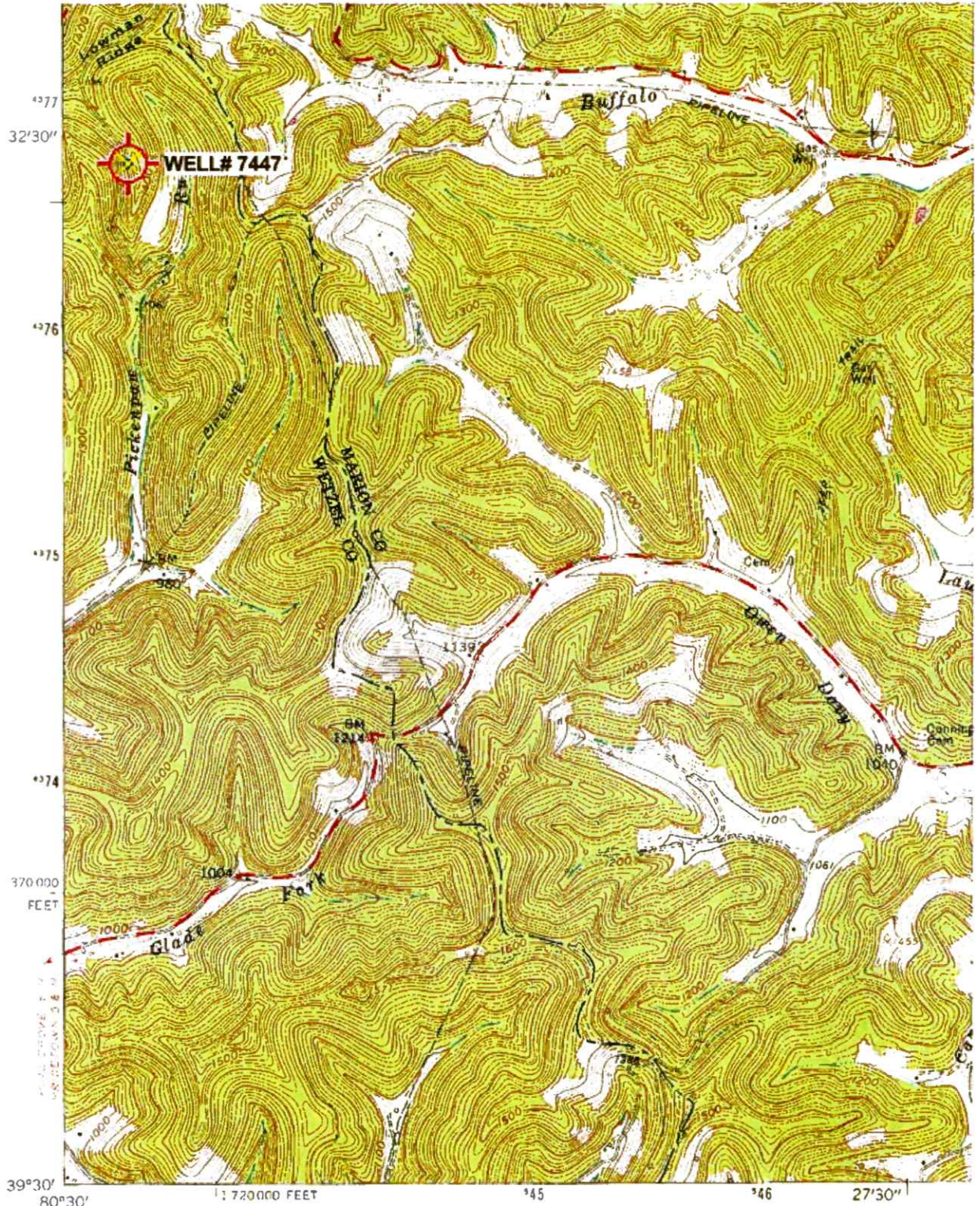
MAY 7, 2024

Signature

Title

Date

06/28/2024



(FOL/SOM)
4892/1 NE

Mapped, edited, and published by the Geological Survey

Control by USGS and USC&GS

Topography from aerial photographs by photogrammetric methods

Aerial photographs taken 1957. Field check 1960

Polyconic projection. 1927 North American datum

10,000-foot grid based on West Virginia coordinate system,

north zone

1000-meter Universal Transverse Mercator grid ticks,

zone 17, shown in blue

Fine red dashed lines indicate selected fence and field lines where generally visible on aerial photographs. This information is unchecked

RECEIVED
Office of Oil and Gas
MAY 29 2024
Department of
Environmental Protection

54° 98 MILS
0° 21' 6 MILS

UTM GRID AND 1976 MAGNETIC NORTH DECLINATION AT CENTER OF SHEET

'Glover Gap; WV' Scale: 1" = 0.379Mi 610Mt 2,000Ft, 1 Mi = 2.640", 1 cm = 240Mt

06/28/2024