



ANTERO RESOURCES CORPORATION

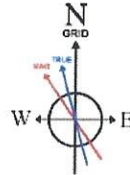
Location: Wetzel County, WV
 Field: Wetzel
 Facility: Furbee Pad

Slot: Slot G
 Well: Viewer Unit 1H
 Wellbore: Viewer Unit 1H PWB



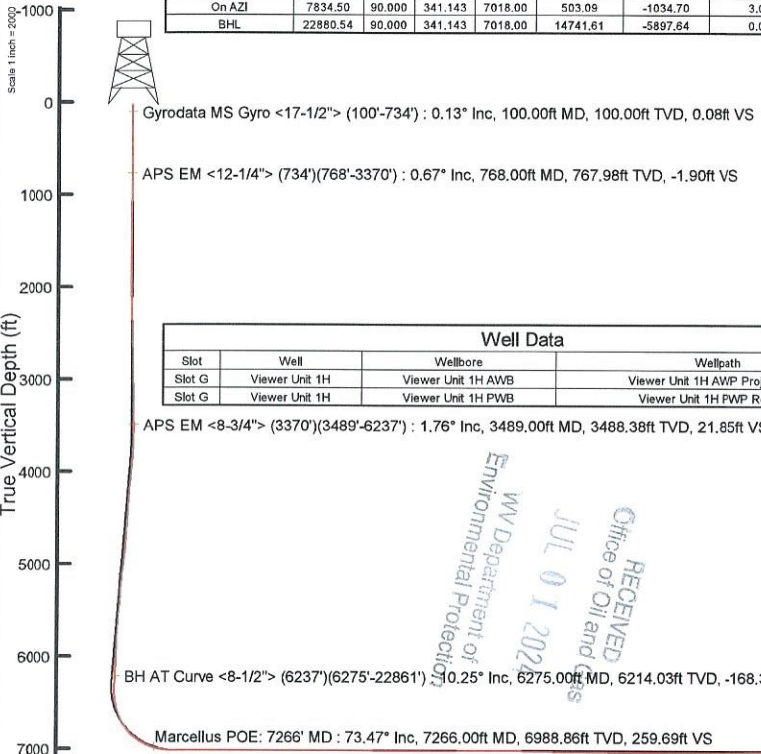
Plot reference wellpath is Viewer Unit 1H PWP Rev-A.1	Grid System: NAD27 / UTM Zone 17 North, US feet
True vertical depths are referenced to H&P 317 (RKB)	North Reference: Grid north
Reference wellpath measured depths are referenced to H&P 317 (RKB)	Scale: True distance
H&P 317 (RKB) to Mean Sea Level 1237.5 feet	Coordinates are in feet referenced to Slot
Mean Sea Level to Ground level (At Slot: Slot G) : -1212 feet	Depths are in feet
Offset wellpath MDs are referenced to each path's default MD datum	Created by: wilsayre on 2023-11-20, Database: WA_MPL_EASTERNUS_Dwh

Location Information						
Facility Name		Grid East (US ft)	Grid North (US ft)	Latitude	Longitude	
Furbee Pad		1716103.700	14364954.390	39°33'26.2100"N	80°43'53.2980"W	
Slot	Local N (ft)	Local E (ft)	Grid East (US ft)	Grid North (US ft)	Latitude	Longitude
Slot G	-235.33	106.52	1716210.180	14364719.150	39°33'23.8810"N	80°43'51.9470"W
Comment Viewer Unit 1H						
H&P 317 (RKB) to Ground level (At Slot: Slot G)					25.5ft	
Mean Sea Level to Ground level (At Slot: Slot G)					-1212ft	
H&P 317 (RKB) to Mean Sea Level					1237.5ft	



User specified (HDGM) Dip: 66.33° Field: 51683 nT
 Magnetic North is 7.94 degrees West of True North (at 10/9/2023)
 Grid North is 0.17 degrees East of True North
 To correct azimuth from True to Grid subtract 0.17 degrees
 To correct azimuth from Magnetic to Grid subtract 8.01 degrees

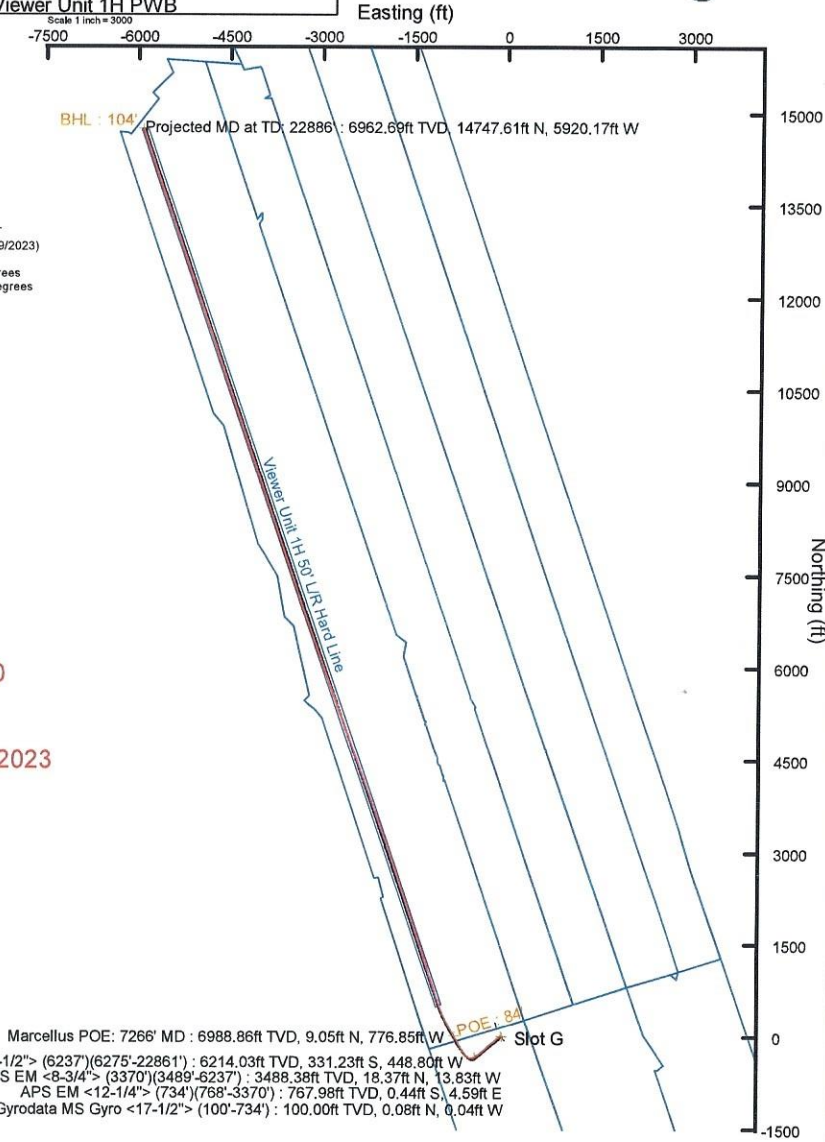
Well Profile Data								
Design Comment	MD (ft)	Inc (°)	Az (°)	TVD (ft)	Local N (ft)	Local E (ft)	DLS (°/100ft)	VS (ft)
Tie On	25.50	0.000	230.333	25.50	0.00	0.00	0.00	0.00
KOP 1	3500.00	0.000	230.333	3500.00	0.00	0.00	0.00	0.00
End of Build	3924.89	12.747	230.333	3921.40	-30.05	-36.23	3.00	-16.72
Curve KOP	6343.56	12.747	230.333	6280.45	-370.69	-447.03	0.00	-206.28
POE	7302.30	73.926	331.205	6990.00	26.65	-805.53	8.00	285.61
Landing Pt.	7503.22	90.000	331.205	7018.00	200.43	-801.05	8.00	480.94
On AZI	7834.50	90.000	341.143	7018.00	503.09	-1034.70	3.00	810.56
BHL	22886.54	90.000	341.143	7018.00	14741.61	-5897.84	0.00	15856.60



Well Data			
Slot	Well	Wellbore	Wellpath
Slot G	Viewer Unit 1H	Viewer Unit 1H AWB	Viewer Unit 1H AWP Proj: 22886'
Slot G	Viewer Unit 1H	Viewer Unit 1H PWB	Viewer Unit 1H PWP Rev-A.1

API: 47-103-03589-0000
 BH Job #: 111949167
 Rig: H&P 317
 Duration: 10/10/2023-10/19/2023

RECEIVED
 Office of Oil and Gas
 JUL 01 2022
 WV Department of Environmental Protection



Projected MD at TD: 22886' : 90.00° Inc, 22886.00ft MD, 6962.69ft TVD, 15869.57ft VS

Vertical Section (ft)
 Azimuth 341.14° with reference 0.00 N, 0.00 E

Scale 1 inch = 2000



Actual Wellpath Report

Viewer Unit 1H AWP Proj: 22886'

Page 1 of 12



REFERENCE WELLPATH IDENTIFICATION

Operator	ANTERO RESOURCES CORPORATION	Well	Viewer Unit 1H
Field	Wetzel	API	47-103-03589-0000
Facility	Furbee Pad	Wellbore	Viewer Unit 1H AWB
Slot	Slot G		

REPORT SETUP INFORMATION

Projection System	NAD27 / UTM Zone 17 North, US feet	Software System	WellArchitect® 6.0
North Reference	Grid	User	Edsaryar
Scale	0.999607	Report Generated	11/20/2023 at 2:46:18 PM
Convergence at slot	0.17° East	Database	WA_MPL_EASTERNUS_Defn

WELLPATH LOCATION

	Local coordinates		Grid coordinates		Geographic coordinates	
	North[ft]	East[ft]	Easting[US ft]	Northing[US ft]	Latitude	Longitude
Slot Location	-235.33	106.52	1716210.18	14364719.15	39°33'23.8810"N	80°43'51.9470"W
Facility Reference Pt			1716103.70	14364954.39	39°33'26.2100"N	80°43'53.2980"W
Field Reference Pt			0.00	0.00	0°00'0.0000"	85°29'19.3013"W

WELLPATH DATUM

Calculation method	Minimum curvature	H&P 317 (RKB) to Facility Vertical Datum	1237.50ft
Horizontal Reference Pt	Slot	H&P 317 (RKB) to Mean Sea Level	1237.50ft
Vertical Reference Pt	H&P 317 (RKB)	H&P 317 (RKB) to Ground Level at Slot (Slot G)	25.50ft
MD Reference Pt	H&P 317 (RKB)	Section Origin	N 0.00, E 0.00 ft
Field Vertical Reference	Mean Sea Level	Section Azimuth	341.14°



Actual Wellpath Report

Viewer Unit 1H AWP Proj: 22886'
Page 2 of 12



REFERENCE WELLPATH IDENTIFICATION			
Operator	ANTERO RESOURCES CORPORATION	Well	Viewer Unit 1H
Field	Wetzel	API	47-103-03589-0000
Facility	Furbee Pad	Wellbore	Viewer Unit 1H AWB
Slot	Slot G		

WELLPATH DATA (251 stations) † = interpolated, ‡ = extrapolated station																
MD [ft]	Inclination [°]	Azimuth [°]	TVD [ft]	Vert Sect [ft]	North [ft]	East [ft]	Grid East [US ft]	Grid North [US ft]	Latitude	Longitude	Closure Dist [ft]	Closure Dir [°]	DLS [°/100ft]	Build Rate [°/100ft]	Turn Rate [°/100ft]	Comments
0.00	0.00	334.080	0.00	0.00	0.00	0.00	1716210.18	14364719.15	39°33'23.8810"N	80°43'51.9470"W	0.00	0.000	0.00	0.00	0.00	
25.50	0.000	334.080	25.50	0.00	0.00	0.00	1716210.18	14364719.15	39°33'23.8810"N	80°43'51.9470"W	0.00	0.000	0.00	0.00	0.00	
100.00	0.130	334.080	100.00	0.08	0.08	-0.04	1716210.14	14364719.23	39°33'23.8818"N	80°43'51.9475"W	0.08	334.080	0.17	0.17	0.00	Gyrodatta MS Gyro <17-1/2"> (100'-734')
200.00	0.210	58.480	200.00	0.24	0.27	0.07	1716210.25	14364719.42	39°33'23.8838"N	80°43'51.9461"W	0.28	14.277	0.24	0.08	84.40	
300.00	0.460	96.290	300.00	0.11	0.33	0.62	1716210.80	14364719.48	39°33'23.8842"N	80°43'51.9390"W	0.70	62.473	0.32	0.25	37.81	
400.00	0.450	94.700	399.99	-0.22	0.25	1.42	1716211.59	14364719.40	39°33'23.8835"N	80°43'51.9289"W	1.44	80.001	0.02	-0.01	-1.59	
500.00	0.530	98.780	499.99	-0.59	0.15	2.26	1716212.44	14364719.30	39°33'23.8824"N	80°43'51.9181"W	2.27	86.291	0.09	0.08	4.08	
600.00	0.490	88.360	599.99	-0.93	0.09	3.15	1716213.33	14364719.24	39°33'23.8818"N	80°43'51.9068"W	3.15	88.392	0.10	-0.04	-10.42	
700.00	0.530	114.610	699.98	-1.38	-0.09	4.00	1716214.17	14364719.06	39°33'23.8800"N	80°43'51.8960"W	4.00	91.318	0.23	0.04	26.25	
734.00	0.570	117.580	733.98	-1.61	-0.24	4.29	1716214.47	14364718.91	39°33'23.8786"N	80°43'51.8923"W	4.30	93.146	0.14	0.12	8.74	
768.00	0.670	130.810	767.98	-1.90	-0.44	4.59	1716214.77	14364718.71	39°33'23.8765"N	80°43'51.8884"W	4.61	95.526	0.51	0.29	38.91	APS EM <12-1/4"> (734')(768'-3370')
857.00	0.720	116.580	856.97	-2.75	-1.03	5.48	1716215.66	14364718.12	39°33'23.8707"N	80°43'51.8770"W	5.58	100.682	0.20	0.06	-15.99	
946.00	0.760	127.840	945.97	-3.64	-1.65	6.45	1716216.63	14364717.50	39°33'23.8646"N	80°43'51.8647"W	6.66	104.322	0.17	0.04	12.65	
1035.00	0.900	124.890	1034.96	-4.70	-2.41	7.49	1716217.67	14364716.74	39°33'23.8570"N	80°43'51.8515"W	7.87	107.828	0.16	0.16	-3.31	
1130.00	0.760	123.740	1129.95	-5.80	-3.19	8.62	1716218.80	14364715.97	39°33'23.8493"N	80°43'51.8370"W	9.19	110.269	0.15	-0.15	-1.21	
1225.00	0.660	125.870	1224.94	-6.75	-3.86	9.59	1716219.77	14364715.30	39°33'23.8427"N	80°43'51.8247"W	10.34	111.898	0.11	-0.11	2.24	
1320.00	0.640	120.710	1319.93	-7.60	-4.45	10.49	1716220.67	14364714.70	39°33'23.8368"N	80°43'51.8132"W	11.40	112.971	0.07	-0.02	-5.43	
1414.00	0.600	116.650	1413.93	-8.35	-4.94	11.38	1716221.56	14364714.22	39°33'23.8319"N	80°43'51.8019"W	12.41	113.444	0.06	-0.04	-4.32	
1509.00	0.580	106.050	1508.92	-8.98	-5.29	12.29	1716222.46	14364713.86	39°33'23.8284"N	80°43'51.7903"W	13.38	113.298	0.12	-0.02	-11.16	
1603.00	0.650	125.490	1602.92	-9.69	-5.73	13.18	1716223.36	14364713.42	39°33'23.8240"N	80°43'51.7789"W	14.37	113.507	0.23	0.07	20.68	
1698.00	0.860	117.670	1697.91	-10.64	-6.38	14.25	1716224.43	14364712.78	39°33'23.8176"N	80°43'51.7653"W	15.61	114.108	0.25	0.22	-8.23	
1793.00	0.200	47.220	1792.91	-11.09	-6.60	15.00	1716225.18	14364712.56	39°33'23.8154"N	80°43'51.7557"W	16.39	113.730	0.86	-0.69	-74.16	
1887.00	0.900	322.090	1886.90	-10.33	-5.90	14.67	1716224.85	14364713.25	39°33'23.8223"N	80°43'51.7599"W	15.81	111.913	0.96	0.74	-90.56	
1981.00	1.440	343.390	1980.88	-8.45	-4.19	13.88	1716224.05	14364714.96	39°33'23.8393"N	80°43'51.7700"W	14.50	106.788	0.73	0.57	22.66	
2076.00	1.490	341.670	2075.85	-6.02	-1.87	13.15	1716223.33	14364717.28	39°33'23.8622"N	80°43'51.7792"W	13.28	98.098	0.07	0.05	-1.81	
2170.00	1.580	337.240	2169.82	-3.51	0.48	12.26	1716222.44	14364719.63	39°33'23.8855"N	80°43'51.7904"W	12.27	87.740	0.16	0.10	-4.71	
2265.00	1.440	337.010	2264.78	-1.01	2.79	11.29	1716221.47	14364721.94	39°33'23.9083"N	80°43'51.8027"W	11.63	76.118	0.15	-0.15	-0.24	
2360.00	1.620	334.580	2359.75	1.52	5.10	10.25	1716220.42	14364724.25	39°33'23.9312"N	80°43'51.8160"W	11.45	63.535	0.20	0.19	-2.56	
2454.00	1.360	336.730	2453.72	3.95	7.33	9.24	1716219.41	14364726.47	39°33'23.9532"N	80°43'51.8288"W	11.79	51.580	0.28	-0.28	2.29	
2548.00	1.370	329.240	2547.69	6.16	9.32	8.22	1716218.40	14364728.46	39°33'23.9729"N	80°43'51.8417"W	12.43	41.428	0.19	0.01	-7.97	

RECEIVED
 Office of Oil and Gas
 JUL 01 2024
 WV Department of
 Environmental Protection



Actual Wellpath Report

Viewer Unit 1H AWP Proj: 22886'
Page 3 of 12



REFERENCE WELLPATH IDENTIFICATION			
Operator	ANTERO RESOURCES CORPORATION	Well	Viewer Unit 1H
Field	Wetzel	API	47-103-03589-0000
Facility	Furbee Pad	Wellbore	Viewer Unit 1H AWB
Slot	Slot G		

WELLPATH DATA (251 stations)																
MD [ft]	Inclination [°]	Azimuth [°]	TVD [ft]	Vert Sect [ft]	North [ft]	East [ft]	Grid East [US ft]	Grid North [US ft]	Latitude	Longitude	Closure Dist [ft]	Closure Dir [°]	DLS [°/100ft]	Build Rate [°/100ft]	Turn Rate [°/100ft]	Comments
2643.00	1.370	298.150	2642.67	8.10	10.83	6.64	1716216.82	14364729.97	39°33'23.9879"N	80°43'51.8618"W	12.70	31.516	0.77	0.00	-32.73	
2737.00	1.440	293.340	2736.64	9.72	11.83	4.57	1716214.74	14364730.97	39°33'23.9978"N	80°43'51.8883"W	12.68	21.106	0.15	0.07	-5.12	
2832.00	1.500	293.040	2831.61	11.35	12.79	2.32	1716212.50	14364731.93	39°33'24.0074"N	80°43'51.9168"W	13.00	10.305	0.06	0.06	-0.32	
2926.00	1.470	290.610	2925.57	12.94	13.69	0.06	1716210.24	14364732.84	39°33'24.0164"N	80°43'51.9457"W	13.69	0.269	0.07	-0.03	-2.59	
3020.00	1.580	290.480	3019.54	14.52	14.57	-2.28	1716207.90	14364733.71	39°33'24.0251"N	80°43'51.9755"W	14.75	351.113	0.12	0.12	-0.14	
3115.00	1.440	295.450	3114.51	16.19	15.54	-4.58	1716205.60	14364734.69	39°33'24.0348"N	80°43'52.0049"W	16.20	343.570	0.20	-0.15	5.23	
3209.00	1.460	294.260	3208.48	17.83	16.54	-6.74	1716203.44	14364735.68	39°33'24.0447"N	80°43'52.0324"W	17.86	337.827	0.04	0.02	-1.27	
3304.00	1.490	289.310	3303.45	19.42	17.45	-9.01	1716201.17	14364736.59	39°33'24.0537"N	80°43'52.0614"W	19.64	332.686	0.14	0.03	-5.21	
3370.00	1.420	287.540	3369.43	20.44	17.98	-10.60	1716199.58	14364737.12	39°33'24.0590"N	80°43'52.0817"W	20.87	329.475	0.13	-0.11	-2.68	
3489.00	1.760	268.240	3488.38	21.85	18.37	-13.83	1716196.35	14364737.51	39°33'24.0630"N	80°43'52.1229"W	22.99	323.014	0.53	0.29	-16.22	APS EM <8-3/4"> (3370')(3489'-623')
3583.00	3.320	235.490	3582.29	21.54	16.78	-17.52	1716192.67	14364735.92	39°33'24.0474"N	80°43'52.1700"W	24.26	313.765	2.20	1.66	-34.84	
3678.00	6.310	231.380	3676.94	19.03	11.96	-23.87	1716186.32	14364731.11	39°33'24.0000"N	80°43'52.2512"W	26.70	296.619	3.17	3.15	-4.33	
3772.00	8.850	231.290	3770.11	14.83	4.21	-33.55	1716176.65	14364723.36	39°33'23.9237"N	80°43'52.3751"W	33.81	277.159	2.70	2.70	-0.10	
3868.00	11.300	231.300	3864.63	9.13	-6.29	-46.65	1716163.55	14364712.87	39°33'23.8203"N	80°43'52.5428"W	47.07	262.324	2.55	2.55	0.01	
3963.00	12.810	228.250	3957.53	1.87	-19.12	-61.77	1716148.43	14364700.04	39°33'23.6939"N	80°43'52.7364"W	64.66	252.801	1.72	1.59	-3.21	
4058.00	12.700	225.540	4050.19	-6.73	-33.45	-77.08	1716133.13	14364685.72	39°33'23.5528"N	80°43'52.9324"W	84.03	246.543	0.64	-0.12	-2.85	
4152.00	12.360	222.210	4141.95	-16.07	-48.14	-91.22	1716119.00	14364671.03	39°33'23.4080"N	80°43'53.1134"W	103.14	242.179	0.85	-0.36	-3.54	
4247.00	11.390	226.620	4234.92	-24.88	-62.11	-104.87	1716105.35	14364657.06	39°33'23.2703"N	80°43'53.2882"W	121.88	239.362	1.40	-1.02	4.64	
4342.00	10.900	234.880	4328.13	-31.29	-73.72	-119.03	1716091.19	14364645.46	39°33'23.1560"N	80°43'53.4695"W	140.01	238.228	1.76	-0.52	8.69	
4436.00	9.050	237.430	4420.71	-35.53	-82.82	-132.53	1716077.70	14364636.37	39°33'23.0665"N	80°43'53.6422"W	156.28	238.000	2.02	-1.97	2.71	
4531.00	10.330	232.430	4514.35	-40.03	-92.03	-145.58	1716064.66	14364627.15	39°33'22.9758"N	80°43'53.8092"W	172.23	237.700	1.61	1.35	-5.26	
4626.00	13.610	233.150	4607.27	-46.22	-103.93	-161.28	1716048.96	14364615.26	39°33'22.8586"N	80°43'54.0101"W	191.87	237.202	3.46	3.45	0.76	
4720.00	15.070	233.010	4698.34	-53.43	-117.92	-179.89	1716030.36	14364601.28	39°33'22.7210"N	80°43'54.2482"W	215.10	236.756	1.55	1.55	-0.15	
4815.00	13.480	228.860	4790.41	-61.48	-132.63	-198.10	1716012.16	14364586.57	39°33'22.5760"N	80°43'54.4812"W	238.40	236.196	1.99	-1.67	-4.37	
4910.00	13.330	225.650	4882.82	-70.39	-147.57	-214.27	1715996.00	14364571.63	39°33'22.4289"N	80°43'54.6882"W	260.17	235.443	0.80	-0.16	-3.38	
5004.00	15.090	224.630	4973.94	-80.51	-163.86	-230.61	1715979.66	14364555.36	39°33'22.2684"N	80°43'54.8975"W	282.90	234.605	1.89	1.87	-1.09	
5099.00	16.030	221.770	5065.46	-92.47	-182.44	-248.04	1715962.24	14364536.78	39°33'22.0852"N	80°43'55.1207"W	307.91	233.664	1.28	0.99	-3.01	
5193.00	12.930	225.450	5156.46	-103.39	-199.50	-264.18	1715946.10	14364519.72	39°33'21.9171"N	80°43'55.3275"W	331.05	232.941	3.44	-3.30	3.91	
5290.00	12.150	234.880	5251.16	-110.96	-212.99	-280.27	1715930.02	14364506.24	39°33'21.7843"N	80°43'55.5333"W	352.02	232.767	2.26	-0.80	9.72	
5385.00	12.410	233.240	5343.99	-116.89	-224.85	-296.63	1715913.67	14364494.39	39°33'21.6675"N	80°43'55.7426"W	372.22	232.837	0.46	0.27	-1.73	



Actual Wellpath Report

Viewer Unit 1H AWP Proj: 22886'
Page 4 of 12



REFERENCE WELLPATH IDENTIFICATION			
Operator	ANTERO RESOURCES CORPORATION	Well	Viewer Unit 1H
Field	Wetzel	API	47-103-03589-0000
Facility	Furbee Pad	Wellbore	Viewer Unit 1H AWB
Slot	Slot G		

WELLPATH DATA (251 stations) † = interpolated, ‡ = extrapolated station																
MD [ft]	Inclination [°]	Azimuth [°]	TVD [ft]	Vert Sect [ft]	North [ft]	East [ft]	Grid East [US ft]	Grid North [US ft]	Latitude	Longitude	Closure Dist [ft]	Closure Dir [°]	DLS [°/100ft]	Build Rate [°/100ft]	Turn Rate [°/100ft]	Comments
5480.00	13.460	231.740	5436.57	-123.70	-237.81	-313.49	1715896.82	14364481.44	39°33'21.5400"N	80°43'55.9583"W	393.48	232.816	1.16	1.11	-1.58	
5574.00	14.060	227.860	5527.88	-131.85	-252.24	-330.54	1715879.77	14364467.01	39°33'21.3978"N	80°43'56.1767"W	415.80	232.652	1.17	0.64	-4.13	
5669.00	12.750	225.990	5620.29	-140.87	-267.27	-346.64	1715863.68	14364451.98	39°33'21.2498"N	80°43'56.3827"W	437.71	232.367	1.45	-1.38	-1.97	
5764.00	11.830	230.990	5713.11	-148.68	-280.68	-361.75	1715848.58	14364438.58	39°33'21.1176"N	80°43'56.5761"W	457.87	232.192	1.48	-0.97	5.26	
5858.00	11.860	240.090	5805.12	-153.85	-291.57	-377.61	1715832.72	14364427.70	39°33'21.0106"N	80°43'56.7790"W	477.07	232.327	1.99	0.03	9.68	
5953.00	12.760	243.440	5897.94	-157.13	-301.13	-395.46	1715814.88	14364418.14	39°33'20.9166"N	80°43'57.0072"W	497.05	232.712	1.21	0.95	3.53	
6048.00	11.080	240.270	5990.88	-160.25	-310.35	-412.77	1715797.58	14364408.93	39°33'20.8260"N	80°43'57.2286"W	516.42	233.062	1.90	-1.77	-3.34	
6142.00	10.560	239.620	6083.21	-163.68	-319.18	-428.04	1715782.31	14364400.10	39°33'20.7391"N	80°43'57.4240"W	533.94	233.289	0.57	-0.55	-0.69	
6237.00	10.320	240.320	6176.64	-167.01	-327.80	-442.95	1715767.41	14364391.48	39°33'20.6544"N	80°43'57.6146"W	551.05	233.497	0.29	-0.25	0.74	
6275.00	10.250	238.910	6214.03	-168.37	-331.23	-448.80	1715761.56	14364388.05	39°33'20.6207"N	80°43'57.6894"W	557.79	233.571	0.69	-0.18	-3.71	BH AT Curve <8-1/2"> (6237')(6275'-22861')
6370.00	11.770	238.170	6307.28	-172.33	-340.70	-464.27	1715746.09	14364378.58	39°33'20.5275"N	80°43'57.8873"W	575.87	233.727	1.61	1.60	-0.78	
6464.00	13.920	256.790	6398.96	-173.37	-348.35	-483.43	1715726.94	14364370.94	39°33'20.4525"N	80°43'58.1322"W	595.86	234.225	4.93	2.29	19.81	
6559.00	17.640	282.000	6490.47	-164.85	-347.97	-508.67	1715701.71	14364371.32	39°33'20.4570"N	80°43'58.4545"W	616.30	235.625	8.12	3.92	26.54	
6653.00	20.640	298.920	6579.33	-145.26	-336.98	-537.14	1715673.26	14364382.30	39°33'20.5664"N	80°43'58.8174"W	634.09	237.897	6.68	3.19	18.00	
6737.00†	26.112	310.204	6656.45	-118.40	-317.87	-564.25	1715646.16	14364401.41	39°33'20.7561"N	80°43'59.1628"W	647.62	240.606	8.39	6.51	13.43	Sycamore: 6737' MD
6747.00	26.810	311.250	6665.40	-114.56	-314.96	-567.62	1715642.78	14364404.32	39°33'20.7850"N	80°43'59.2058"W	649.15	240.975	8.39	6.98	10.46	
6841.00	34.700	320.350	6746.16	-71.07	-280.31	-600.70	1715609.71	14364438.95	39°33'21.1284"N	80°43'59.6268"W	662.89	244.985	9.72	8.39	9.68	
6887.00†	38.949	323.570	6782.98	-45.04	-258.58	-617.65	1715592.77	14364460.67	39°33'21.3436"N	80°43'59.8424"W	669.60	247.283	10.14	9.24	7.00	Middlesex: 6887' MD
6935.00	43.460	326.350	6819.08	-14.67	-232.68	-635.77	1715574.66	14364486.56	39°33'21.6001"N	80°44'0.0728"W	677.01	249.898	10.14	9.40	5.79	
7029.00	53.200	329.610	6881.51	53.63	-173.16	-672.82	1715537.63	14364546.06	39°33'22.1895"N	80°44'0.5435"W	694.74	255.568	10.68	10.36	3.47	Burkett: 7029' MD
7078.00†	56.805	329.937	6909.61	92.98	-138.48	-693.02	1715517.43	14364580.73	39°33'22.5328"N	80°44'0.8001"W	706.72	258.700	7.38	7.36	0.67	Tully: 7078' MD
7124.00	60.190	330.220	6933.64	131.47	-104.49	-712.58	1715497.88	14364614.70	39°33'22.8693"N	80°44'1.0485"W	720.20	261.658	7.38	7.36	0.62	
7218.00	69.440	330.610	6973.60	214.96	-30.59	-754.52	1715455.96	14364688.57	39°33'23.6009"N	80°44'1.5812"W	755.14	267.678	9.85	9.84	0.41	
7266.00†	73.474	330.610	6988.86	259.69	9.05	-776.85	1715433.64	14364728.20	39°33'23.9933"N	80°44'1.8648"W	776.90	270.668	8.40	8.40	0.00	Marcellus POE: 7266' MD
7312.00	77.340	330.610	7000.45	303.45	47.83	-798.69	1715411.80	14364766.96	39°33'24.3773"N	80°44'2.1422"W	800.12	273.427	8.40	8.40	0.00	
7406.00	85.530	330.510	7014.44	394.74	128.71	-844.34	1715366.17	14364847.81	39°33'25.1779"N	80°44'2.7219"W	854.10	278.667	8.71	8.71	-0.11	
7500.00	90.030	330.370	7018.08	487.01	210.39	-890.67	1715319.86	14364929.46	39°33'25.9866"N	80°44'3.3103"W	915.18	283.291	4.79	4.79	-0.15	
7595.00	90.280	333.760	7017.82	580.81	294.31	-935.17	1715275.38	14365013.35	39°33'26.8173"N	80°44'3.8752"W	980.39	287.470	3.58	0.26	3.57	
7690.00	90.180	336.550	7017.44	675.28	380.51	-975.08	1715235.49	14365099.51	39°33'27.6703"N	80°44'4.3816"W	1046.69	291.317	2.94	-0.11	2.94	
7784.00	90.030	339.890	7017.27	769.15	467.79	-1009.95	1715200.63	14365186.75	39°33'28.5339"N	80°44'4.8235"W	1113.03	294.853	3.56	-0.16	3.55	

RECEIVED
 Office of Oil and Gas
 JUL 01 2024
 WV Department of
 Environmental Protection



Actual Wellpath Report

Viewer Unit 1H AWP Proj: 22886'
Page 5 of 12



REFERENCE WELLPATH IDENTIFICATION			
Operator	ANTERO RESOURCES CORPORATION	Well	Viewer Unit 1H
Field	Wetzel	API	47-103-03589-0000
Facility	Furbee Pad	Wellbore	Viewer Unit 1H AWB
Slot	Slot G		

WELLPATH DATA (251 stations)																
MD [ft]	Inclination [°]	Azimuth [°]	TVD [ft]	Vert Sect [ft]	North [ft]	East [ft]	Grid East [US ft]	Grid North [US ft]	Latitude	Longitude	Closure Dist [ft]	Closure Dir [°]	DLS ["/100ft]	Build Rate ["/100ft]	Turn Rate ["/100ft]	Comments
7879.00	89.380	340.090	7017.76	864.13	557.05	-1042.46	1715168.13	14365275.98	39°33'29.4171"N	80°44'5.2352"W	1181.96	298.118	0.72	-0.68	0.21	
7974.00	90.090	340.280	7018.20	959.11	646.42	-1074.66	1715135.94	14365365.32	39°33'30.3013"N	80°44'5.6430"W	1254.10	301.028	0.77	0.75	0.20	
8068.00	90.030	342.090	7018.10	1053.11	735.40	-1104.98	1715105.64	14365454.26	39°33'31.1816"N	80°44'6.0267"W	1327.32	303.645	1.93	-0.06	1.93	
8163.00	90.000	341.790	7018.07	1148.10	825.72	-1134.43	1715076.20	14365544.54	39°33'32.0751"N	80°44'6.3993"W	1403.12	306.050	0.32	-0.03	-0.32	
8257.00	89.750	341.430	7018.28	1242.09	914.92	-1164.08	1715046.56	14365633.70	39°33'32.9575"N	80°44'6.7745"W	1480.59	308.166	0.47	-0.27	-0.38	
8352.00	90.460	341.910	7018.11	1337.09	1005.10	-1193.96	1715016.69	14365723.85	39°33'33.8496"N	80°44'7.1526"W	1560.69	310.091	0.90	0.75	0.51	
8447.00	90.620	342.270	7017.21	1432.07	1095.49	-1223.17	1714987.49	14365814.20	39°33'34.7438"N	80°44'7.5222"W	1642.02	311.848	0.41	0.17	0.38	
8542.00	90.370	342.090	7016.39	1527.05	1185.93	-1252.24	1714958.43	14365904.61	39°33'35.6385"N	80°44'7.8900"W	1724.68	313.442	0.32	-0.26	-0.19	
8636.00	90.490	342.460	7015.68	1621.03	1275.46	-1280.86	1714929.83	14365994.11	39°33'36.5242"N	80°44'8.2520"W	1807.60	314.879	0.41	0.13	0.39	
8731.00	89.970	342.020	7015.30	1716.01	1365.93	-1309.84	1714900.86	14366084.54	39°33'37.4192"N	80°44'8.6186"W	1892.47	316.201	0.72	-0.55	-0.46	
8826.00	90.090	342.530	7015.25	1810.99	1456.42	-1338.76	1714871.95	14366175.00	39°33'38.3144"N	80°44'8.9845"W	1978.24	317.410	0.55	0.13	0.54	
8920.00	90.030	342.050	7015.15	1904.97	1545.97	-1367.36	1714843.36	14366264.51	39°33'39.2002"N	80°44'9.3462"W	2063.90	318.508	0.51	-0.06	-0.51	
9015.00	90.800	341.970	7014.47	1999.96	1636.32	-1396.70	1714814.04	14366354.82	39°33'40.0940"N	80°44'9.7174"W	2151.35	319.517	0.81	0.81	-0.08	
9109.00	89.720	341.660	7014.04	2093.95	1725.62	-1426.03	1714784.71	14366444.09	39°33'40.9775"N	80°44'10.0886"W	2238.60	320.430	1.20	-1.15	-0.33	
9204.00	90.090	341.140	7014.20	2188.95	1815.66	-1456.33	1714754.42	14366534.09	39°33'41.8682"N	80°44'10.4721"W	2327.56	321.267	0.67	0.39	-0.55	
9299.00	89.780	340.250	7014.30	2283.94	1905.32	-1487.74	1714723.03	14366623.71	39°33'42.7552"N	80°44'10.8698"W	2417.35	322.016	0.99	-0.33	-0.94	
9394.00	89.350	341.500	7015.03	2378.94	1995.07	-1518.86	1714691.92	14366713.43	39°33'43.6432"N	80°44'11.2638"W	2507.44	322.718	1.39	-0.45	1.32	
9488.00	88.770	341.540	7016.57	2472.92	2084.21	-1548.65	1714662.14	14366802.54	39°33'44.5250"N	80°44'11.6408"W	2596.59	323.386	0.62	-0.62	0.04	
9583.00	89.050	341.640	7018.38	2567.90	2174.33	-1578.65	1714632.15	14366892.62	39°33'45.4166"N	80°44'12.0205"W	2686.98	324.019	0.31	0.29	0.11	
9677.00	88.710	341.110	7020.21	2661.88	2263.39	-1608.66	1714602.15	14366981.65	39°33'46.2976"N	80°44'12.4004"W	2776.82	324.597	0.67	-0.36	-0.56	
9772.00	89.200	341.480	7021.95	2756.87	2353.36	-1639.13	1714571.70	14367071.58	39°33'47.1877"N	80°44'12.7860"W	2867.93	325.143	0.65	0.52	0.39	
9866.00	89.630	342.100	7022.90	2850.86	2442.64	-1668.50	1714542.34	14367160.83	39°33'48.0710"N	80°44'13.1577"W	2958.11	325.664	0.80	0.46	0.66	
9961.00	88.770	341.360	7024.23	2945.84	2532.85	-1698.28	1714512.57	14367250.99	39°33'48.9633"N	80°44'13.5345"W	3049.50	326.158	1.19	-0.91	-0.78	
10055.00	90.180	342.340	7025.09	3039.83	2622.16	-1727.56	1714483.31	14367340.27	39°33'49.8469"N	80°44'13.9050"W	3140.09	326.622	1.83	1.50	1.04	
10149.00	91.510	342.070	7023.71	3133.80	2711.65	-1756.28	1714454.59	14367429.73	39°33'50.7322"N	80°44'14.2685"W	3230.72	327.070	1.44	1.41	-0.29	
10243.00	90.030	340.280	7022.44	3227.78	2800.61	-1786.61	1714424.28	14367518.65	39°33'51.6122"N	80°44'14.6524"W	3321.95	327.465	2.47	-1.57	-1.90	
10338.00	90.950	340.600	7021.63	3322.77	2890.12	-1818.41	1714392.49	14367608.13	39°33'52.4978"N	80°44'15.0551"W	3414.59	327.823	1.03	0.97	0.34	
10432.00	90.280	341.080	7020.62	3416.76	2978.91	-1849.26	1714361.65	14367696.88	39°33'53.3762"N	80°44'15.4457"W	3506.23	328.169	0.88	-0.71	0.51	
10526.00	90.710	340.900	7019.81	3510.76	3067.78	-1879.88	1714331.04	14367785.72	39°33'54.2554"N	80°44'15.8334"W	3597.95	328.501	0.50	0.46	-0.19	
10621.00	90.310	341.750	7018.96	3605.75	3157.77	-1910.30	1714300.64	14367875.68	39°33'55.1457"N	80°44'16.2184"W	3690.63	328.828	0.99	-0.42	0.89	



Actual Wellpath Report

Viewer Unit 1H AWP Proj: 22886'

Page 6 of 12



REFERENCE WELLPATH IDENTIFICATION

Operator	ANTERO RESOURCES CORPORATION	Well	Viewer Unit 1H
Field	Wetzel	API	47-103-03589-0000
Facility	Furbee Pad	Wellbore	Viewer Unit 1H AWB
Slot	Slot G		

WELLPATH DATA (251 stations)

MD [ft]	Inclination [°]	Azimuth [°]	TVD [ft]	Vert Sect [ft]	North [ft]	East [ft]	Grid East [US ft]	Grid North [US ft]	Latitude	Longitude	Closure Dist [ft]	Closure Dir [°]	DLS [°/100ft]	Build Rate [°/100ft]	Turn Rate [°/100ft]	Comments
10716.00	90.340	338.630	7018.42	3700.73	3247.14	-1942.49	1714268.46	14367965.01	39°33'56.0299"N	80°44'16.6261"W	3783.80	329.112	3.28	0.03	-3.28	
10810.00	90.150	340.410	7018.02	3794.68	3335.19	-1975.37	1714235.59	14368053.02	39°33'56.9011"N	80°44'17.0428"W	3876.29	329.363	1.90	-0.20	1.89	
10905.00	90.400	340.180	7017.57	3889.67	3424.63	-2007.41	1714203.57	14368142.43	39°33'57.7859"N	80°44'17.4484"W	3969.61	329.623	0.36	0.26	-0.24	
11000.00	90.340	340.600	7016.95	3984.66	3514.12	-2039.29	1714171.70	14368231.88	39°33'58.6713"N	80°44'17.8522"W	4062.97	329.873	0.45	-0.06	0.44	
11094.00	90.060	340.570	7016.63	4078.66	3602.77	-2070.53	1714140.46	14368320.50	39°33'59.5483"N	80°44'18.2479"W	4155.37	330.114	0.30	-0.30	-0.03	
11189.00	88.740	340.040	7017.62	4173.64	3692.21	-2102.55	1714108.46	14368409.90	39°34'0.4332"N	80°44'18.6534"W	4248.89	330.340	1.50	-1.39	-0.56	
11284.00	88.120	339.800	7020.22	4268.58	3781.40	-2135.15	1714075.87	14368499.05	39°34'1.3156"N	80°44'19.0664"W	4342.56	330.549	0.70	-0.65	-0.25	
11378.00	89.260	340.370	7022.37	4362.54	3869.75	-2167.16	1714043.87	14368587.37	39°34'2.1897"N	80°44'19.4718"W	4435.26	330.750	1.36	1.21	0.61	
11473.00	88.890	340.530	7023.91	4457.52	3959.26	-2198.95	1714012.10	14368676.85	39°34'3.0753"N	80°44'19.8744"W	4528.92	330.953	0.42	-0.39	0.17	
11568.00	88.920	340.270	7025.72	4552.49	4048.74	-2230.81	1713980.25	14368766.29	39°34'3.9606"N	80°44'20.2779"W	4622.64	331.146	0.28	0.03	-0.27	
11662.00	89.380	340.390	7027.12	4646.47	4137.25	-2262.45	1713948.63	14368854.76	39°34'4.8362"N	80°44'20.6786"W	4715.45	331.328	0.51	0.49	0.13	
11757.00	89.350	340.340	7028.17	4741.46	4226.72	-2294.37	1713916.72	14368944.20	39°34'5.7214"N	80°44'21.0829"W	4809.29	331.506	0.06	-0.03	-0.05	
11852.00	89.320	340.430	7029.27	4836.45	4316.20	-2326.26	1713884.84	14369033.64	39°34'6.6066"N	80°44'21.4868"W	4903.17	331.677	0.10	-0.03	0.09	
11947.00	89.480	340.390	7030.27	4931.43	4405.69	-2358.11	1713853.01	14369123.10	39°34'7.4921"N	80°44'21.8902"W	4997.08	331.842	0.17	0.17	-0.04	
12041.00	89.420	340.400	7031.17	5025.42	4494.24	-2389.65	1713821.48	14369211.61	39°34'8.3681"N	80°44'22.2896"W	5090.05	332.000	0.06	-0.06	0.01	
12136.00	89.320	340.330	7032.21	5120.41	4583.71	-2421.57	1713789.57	14369301.05	39°34'9.2532"N	80°44'22.6939"W	5184.05	332.153	0.13	-0.11	-0.07	
12230.00	89.510	340.510	7033.17	5214.39	4672.27	-2453.07	1713758.08	14369389.57	39°34'10.1294"N	80°44'23.0929"W	5277.09	332.299	0.28	0.20	0.19	
12324.00	89.140	340.730	7034.28	5308.38	4760.94	-2484.26	1713726.91	14369478.21	39°34'11.0066"N	80°44'23.4879"W	5370.11	332.444	0.46	-0.39	0.23	
12419.00	90.090	339.770	7034.92	5403.37	4850.35	-2516.36	1713694.82	14369567.58	39°34'11.8912"N	80°44'23.8945"W	5464.24	332.580	1.42	1.00	-1.01	
12513.00	89.850	340.250	7034.97	5497.35	4938.68	-2548.49	1713662.70	14369655.88	39°34'12.7651"N	80°44'24.3016"W	5557.46	332.705	0.57	-0.26	0.51	
12607.00	89.880	340.480	7035.19	5591.34	5027.22	-2580.08	1713631.12	14369744.38	39°34'13.6410"N	80°44'24.7017"W	5650.64	332.832	0.25	0.03	0.24	
12702.00	90.060	340.940	7035.24	5686.34	5116.88	-2611.46	1713599.75	14369834.01	39°34'14.5281"N	80°44'25.0991"W	5744.76	332.962	0.52	0.19	0.48	
12796.00	89.260	340.190	7035.80	5780.33	5205.52	-2642.74	1713568.49	14369922.62	39°34'15.4051"N	80°44'25.4952"W	5837.94	333.084	1.17	-0.85	-0.80	
12891.00	90.180	340.290	7036.26	5875.31	5294.93	-2674.85	1713536.38	14370011.98	39°34'16.2896"N	80°44'25.9021"W	5932.21	333.198	0.97	0.97	0.11	
12985.00	90.250	340.290	7035.91	5969.30	5383.42	-2706.56	1713504.69	14370100.44	39°34'17.1651"N	80°44'26.3036"W	6025.50	333.309	0.07	0.07	0.00	
13080.00	90.180	340.290	7035.55	6064.29	5472.85	-2738.60	1713472.67	14370189.84	39°34'18.0499"N	80°44'26.7095"W	6119.81	333.417	0.07	-0.07	0.00	
13174.00	90.280	340.000	7035.17	6158.28	5561.26	-2770.52	1713440.75	14370278.22	39°34'18.9246"N	80°44'27.1139"W	6213.17	333.518	0.33	0.11	-0.31	
13268.00	90.060	339.380	7034.90	6252.25	5649.42	-2803.15	1713408.14	14370366.34	39°34'19.7967"N	80°44'27.5273"W	6306.63	333.610	0.70	-0.23	-0.66	
13363.00	90.460	341.230	7034.46	6347.23	5738.86	-2835.16	1713376.14	14370455.74	39°34'20.6816"N	80°44'27.9328"W	6400.99	333.709	1.99	0.42	1.95	
13457.00	89.660	339.010	7034.37	6441.21	5827.25	-2867.13	1713344.19	14370544.10	39°34'21.5561"N	80°44'28.3377"W	6494.40	333.802	2.51	-0.85	-2.36	

RECEIVED
 Office of Oil and Gas
 JUL 01 2024
 WY Department of
 Environmental Protection



Actual Wellpath Report

Viewer Unit 1H AWP Proj: 22886'

Page 7 of 12



REFERENCE WELLPATH IDENTIFICATION

Operator	ANTERO RESOURCES CORPORATION	Well	Viewer Unit 1H
Field	Wetzel	API	47-103-03589-0000
Facility	Furbee Pad	Wellbore	Viewer Unit 1H AWB
Slot	Slot G		

WELLPATH DATA (251 stations)

MD [ft]	Inclination [°]	Azimuth [°]	TVD [ft]	Vert Sect [ft]	North [ft]	East [ft]	Grid East [US ft]	Grid North [US ft]	Latitude	Longitude	Closure Dist [ft]	Closure Dir [°]	DLS [°/100ft]	Build Rate [°/100ft]	Turn Rate [°/100ft]	Comments
13551.00	90.740	340.510	7034.04	6535.18	5915.44	-2899.64	1713311.68	14370632.25	39°34'22.4286"N	80°44'28.7498"W	6587.90	333.887	1.97	1.15	1.60	
13645.00	90.340	340.470	7033.15	6629.17	6004.04	-2931.04	1713280.30	14370720.82	39°34'23.3052"N	80°44'29.1474"W	6681.28	333.979	0.43	-0.43	-0.04	
13740.00	90.310	339.830	7032.61	6724.15	6093.39	-2963.29	1713248.06	14370810.13	39°34'24.1892"N	80°44'29.5560"W	6775.73	334.066	0.67	-0.03	-0.67	
13835.00	90.830	340.690	7031.67	6819.13	6182.80	-2995.38	1713215.99	14370899.51	39°34'25.0738"N	80°44'29.9625"W	6870.18	334.151	1.06	0.55	0.91	
13928.00	90.520	340.420	7030.57	6912.12	6270.49	-3026.34	1713185.04	14370987.16	39°34'25.9413"N	80°44'30.3546"W	6962.60	334.237	0.44	-0.33	-0.29	
14023.00	90.620	340.340	7029.63	7007.11	6359.97	-3058.23	1713153.16	14371076.61	39°34'26.8265"N	80°44'30.7587"W	7057.06	334.319	0.13	0.11	-0.08	
14118.00	90.800	340.400	7028.45	7102.09	6449.45	-3090.15	1713121.26	14371166.05	39°34'27.7117"N	80°44'31.1629"W	7151.53	334.399	0.20	0.19	0.06	
14212.00	90.980	340.580	7026.99	7196.08	6538.04	-3121.53	1713089.88	14371254.60	39°34'28.5882"N	80°44'31.5605"W	7244.99	334.478	0.27	0.19	0.19	
14306.00	90.000	339.910	7026.19	7290.06	6626.50	-3153.30	1713058.12	14371343.03	39°34'29.4634"N	80°44'31.9630"W	7338.52	334.552	1.26	-1.04	-0.71	
14401.00	90.550	340.750	7025.73	7385.05	6715.95	-3185.28	1713026.16	14371432.45	39°34'30.3484"N	80°44'32.3681"W	7433.04	334.626	1.06	0.58	0.88	
14496.00	90.030	340.340	7025.25	7480.04	6805.53	-3216.92	1712994.53	14371521.99	39°34'31.2345"N	80°44'32.7689"W	7527.54	334.700	0.70	-0.55	-0.43	
14590.00	89.880	341.480	7025.32	7574.04	6894.36	-3247.66	1712963.80	14371610.78	39°34'32.1133"N	80°44'33.1582"W	7620.99	334.777	1.22	-0.16	1.21	
14685.00	90.860	341.400	7024.71	7669.03	6984.41	-3277.90	1712933.57	14371700.80	39°34'33.0042"N	80°44'33.5411"W	7715.35	334.859	1.04	1.03	-0.08	
14780.00	90.490	341.740	7023.59	7764.02	7074.54	-3307.93	1712903.55	14371790.89	39°34'33.8958"N	80°44'33.9213"W	7809.70	334.940	0.53	-0.39	0.36	
14874.00	90.430	341.570	7022.84	7858.02	7163.76	-3337.52	1712873.98	14371880.07	39°34'34.7784"N	80°44'34.2959"W	7903.06	335.020	0.19	-0.06	-0.18	
14969.00	90.220	341.160	7022.30	7953.02	7253.77	-3367.87	1712843.64	14371970.05	39°34'35.6689"N	80°44'34.6802"W	7997.49	335.095	0.48	-0.22	-0.43	
15063.00	90.830	341.620	7021.44	8047.01	7342.85	-3397.87	1712813.65	14372059.10	39°34'36.5501"N	80°44'35.0601"W	8090.92	335.168	0.81	0.65	0.49	
15157.00	90.890	341.320	7020.02	8141.00	7431.97	-3427.74	1712783.80	14372148.18	39°34'37.4317"N	80°44'35.4383"W	8184.35	335.240	0.33	0.06	-0.32	
15252.00	91.320	341.680	7018.19	8235.98	7522.04	-3457.88	1712753.67	14372238.22	39°34'38.3228"N	80°44'35.8199"W	8278.77	335.312	0.59	0.45	0.38	
15346.00	90.950	340.540	7016.33	8329.96	7610.96	-3488.30	1712723.26	14372327.10	39°34'39.2025"N	80°44'36.2052"W	8372.28	335.377	1.27	-0.39	-1.21	
15441.00	91.420	341.430	7014.37	8424.94	7700.76	-3519.25	1712692.32	14372416.86	39°34'40.0908"N	80°44'36.5971"W	8466.81	335.440	1.06	0.49	0.94	
15535.00	90.310	341.410	7012.95	8518.92	7789.85	-3549.20	1712662.39	14372505.92	39°34'40.9721"N	80°44'36.9763"W	8560.29	335.505	1.18	-1.18	-0.02	
15629.00	90.620	341.510	7012.18	8612.92	7878.97	-3579.08	1712632.51	14372595.00	39°34'41.8538"N	80°44'37.3548"W	8653.78	335.570	0.35	0.33	0.11	
15724.00	90.310	340.920	7011.41	8707.91	7968.90	-3609.68	1712601.93	14372684.90	39°34'42.7435"N	80°44'37.7422"W	8748.32	335.631	0.70	-0.33	-0.62	
15818.00	90.680	341.380	7010.60	8801.91	8057.86	-3640.04	1712571.57	14372773.82	39°34'43.6235"N	80°44'38.1268"W	8841.89	335.689	0.63	0.39	0.49	
15913.00	90.800	341.440	7009.37	8896.90	8147.89	-3670.33	1712541.30	14372863.82	39°34'44.5142"N	80°44'38.5103"W	8936.41	335.750	0.14	0.13	0.06	
16007.00	90.650	341.390	7008.18	8990.89	8236.98	-3700.28	1712511.36	14372952.88	39°34'45.3955"N	80°44'38.8896"W	9029.95	335.809	0.17	-0.16	-0.05	
16102.00	90.680	341.260	7007.08	9085.89	8326.98	-3730.70	1712480.95	14373042.83	39°34'46.2858"N	80°44'39.2748"W	9124.51	335.866	0.14	0.03	-0.14	
16196.00	90.650	341.000	7005.99	9179.88	8415.92	-3761.10	1712450.57	14373131.74	39°34'47.1657"N	80°44'39.6598"W	9218.11	335.920	0.28	-0.03	-0.28	
16290.00	90.830	341.140	7004.78	9273.87	8504.83	-3791.59	1712420.09	14373220.61	39°34'48.0452"N	80°44'40.0460"W	9311.73	335.972	0.24	0.19	0.15	



Actual Wellpath Report

Viewer Unit 1H AWP Proj: 22886'
Page 8 of 12



REFERENCE WELLPATH IDENTIFICATION			
Operator	ANTERO RESOURCES CORPORATION	Well	Viewer Unit 1H
Field	Wetzel	API	47-103-03589-0000
Facility	Furbee Pad	Wellbore	Viewer Unit 1H AWB
Slot	Slot G		

WELLPATH DATA (251 stations)																
MD [ft]	Inclination [°]	Azimuth [°]	TVD [ft]	Vert Sect [ft]	North [ft]	East [ft]	Grid East [US ft]	Grid North [US ft]	Latitude	Longitude	Closure Dist [ft]	Closure Dir [°]	DLS ["/100ft]	Build Rate ["/100ft]	Turn Rate ["/100ft]	Comments
16385.00	90.460	341.250	7003.71	9368.86	8594.75	-3822.21	1712389.48	14373310.50	39°34'48.9348"N	80°44'40.4338"W	9406.33	336.025	0.41	-0.39	0.12	
16480.00	90.740	341.370	7002.71	9463.86	8684.73	-3852.65	1712359.05	14373400.45	39°34'49.8250"N	80°44'40.8194"W	9500.92	336.077	0.32	0.29	0.13	
16574.00	90.460	340.970	7001.73	9557.85	8773.70	-3882.99	1712328.72	14373489.38	39°34'50.7051"N	80°44'41.2036"W	9594.55	336.127	0.52	-0.30	-0.43	
16669.00	91.050	341.020	7000.48	9652.84	8863.51	-3913.93	1712297.80	14373579.16	39°34'51.5936"N	80°44'41.5954"W	9689.20	336.175	0.62	0.62	0.05	
16763.00	90.830	341.480	6998.93	9746.83	8952.51	-3944.14	1712267.60	14373668.12	39°34'52.4741"N	80°44'41.9780"W	9782.83	336.224	0.54	-0.23	0.49	
16858.00	90.740	341.560	6997.63	9841.82	9042.60	-3974.25	1712237.50	14373758.18	39°34'53.3653"N	80°44'42.3593"W	9877.41	336.274	0.13	-0.09	0.08	
16952.00	90.620	341.210	6996.52	9935.81	9131.68	-4004.25	1712207.51	14373847.22	39°34'54.2465"N	80°44'42.7393"W	9971.04	336.323	0.39	-0.13	-0.37	
17047.00	90.890	341.140	6995.27	10030.80	9221.59	-4034.90	1712176.87	14373937.09	39°34'55.1360"N	80°44'43.1275"W	10065.69	336.368	0.29	0.28	-0.07	
17142.00	90.740	340.780	6993.91	10125.79	9311.38	-4065.89	1712145.90	14374026.85	39°34'56.0243"N	80°44'43.5200"W	10160.38	336.411	0.41	-0.16	-0.38	
17236.00	90.740	341.480	6992.70	10219.79	9400.32	-4096.29	1712115.51	14374115.76	39°34'56.9041"N	80°44'43.9051"W	10254.06	336.454	0.74	0.00	0.74	
17331.00	90.890	341.360	6991.35	10314.77	9490.36	-4126.56	1712085.26	14374205.76	39°34'57.7949"N	80°44'44.2884"W	10348.69	336.500	0.20	0.16	-0.13	
17426.00	90.920	341.480	6989.85	10409.76	9580.40	-4156.82	1712055.00	14374295.76	39°34'58.6856"N	80°44'44.6717"W	10443.33	336.545	0.13	0.03	0.13	
17520.00	90.980	341.120	6988.29	10503.75	9669.43	-4186.96	1712024.88	14374384.75	39°34'59.5663"N	80°44'45.0533"W	10537.00	336.587	0.39	0.06	-0.38	
17615.00	90.680	341.690	6986.91	10598.74	9759.46	-4217.25	1711994.60	14374474.75	39°35'0.4569"N	80°44'45.4369"W	10631.66	336.630	0.68	-0.32	0.60	
17709.00	90.340	341.660	6986.08	10692.73	9848.69	-4246.80	1711965.06	14374563.94	39°35'1.3396"N	80°44'45.8112"W	10725.29	336.674	0.36	-0.36	-0.03	
17804.00	90.680	341.110	6985.23	10787.72	9938.71	-4277.12	1711934.75	14374653.93	39°35'2.2302"N	80°44'46.1952"W	10819.97	336.715	0.68	0.36	-0.58	
17899.00	90.460	341.240	6984.29	10882.72	10028.63	-4307.77	1711904.11	14374743.81	39°35'3.1197"N	80°44'46.5835"W	10914.68	336.754	0.27	-0.23	0.14	
17993.00	90.710	341.140	6983.33	10976.71	10117.60	-4338.08	1711873.81	14374832.75	39°35'3.9999"N	80°44'46.9674"W	11008.40	336.792	0.29	0.27	-0.11	
18088.00	90.490	341.200	6982.33	11071.71	10207.51	-4368.74	1711843.17	14374922.62	39°35'4.8893"N	80°44'47.3557"W	11103.12	336.829	0.24	-0.23	0.06	
18183.00	90.680	341.300	6981.36	11166.70	10297.46	-4399.28	1711812.64	14375012.54	39°35'5.7792"N	80°44'47.7425"W	11197.83	336.867	0.23	0.20	0.11	
18277.00	90.710	341.350	6980.22	11260.70	10386.51	-4429.37	1711782.56	14375101.55	39°35'6.6601"N	80°44'48.1237"W	11291.54	336.904	0.06	0.03	0.05	
18372.00	90.550	341.450	6979.18	11355.69	10476.54	-4459.67	1711752.27	14375191.55	39°35'7.5507"N	80°44'48.5074"W	11386.25	336.941	0.20	-0.17	0.11	
18467.00	90.520	341.240	6978.29	11450.68	10566.55	-4490.06	1711721.90	14375281.52	39°35'8.4411"N	80°44'48.8923"W	11480.96	336.978	0.22	-0.03	-0.22	
18561.00	90.740	341.000	6977.26	11544.68	10655.48	-4520.47	1711691.49	14375370.42	39°35'9.3209"N	80°44'49.2776"W	11574.71	337.011	0.35	0.23	-0.26	
18656.00	90.710	341.360	6976.05	11639.67	10745.40	-4551.12	1711660.86	14375460.30	39°35'10.2104"N	80°44'49.6658"W	11669.46	337.045	0.38	-0.03	0.38	
18750.00	90.400	341.000	6975.14	11733.67	10834.37	-4581.44	1711630.55	14375549.23	39°35'11.0906"N	80°44'50.0499"W	11763.21	337.078	0.51	-0.33	-0.38	
18844.00	90.830	341.390	6974.13	11827.66	10923.34	-4611.74	1711600.26	14375638.17	39°35'11.9708"N	80°44'50.4337"W	11856.96	337.111	0.62	0.46	0.41	
18939.00	90.890	341.520	6972.71	11922.65	11013.40	-4641.95	1711570.06	14375728.20	39°35'12.8617"N	80°44'50.8163"W	11951.68	337.145	0.15	0.06	0.14	
19033.00	90.150	340.850	6971.86	12016.64	11102.37	-4672.27	1711539.76	14375817.13	39°35'13.7419"N	80°44'51.2003"W	12045.45	337.177	1.06	-0.79	-0.71	
19128.00	90.680	341.120	6971.17	12111.64	11192.19	-4703.22	1711508.82	14375906.91	39°35'14.6304"N	80°44'51.5924"W	12140.23	337.207	0.63	0.56	0.28	

RECEIVED
 Office of Oil and Gas
 JUL 01 2024
 Environmental Protection
 Department of



Actual Wellpath Report

Viewer Unit 1H AWP Proj: 22886'

Page 9 of 12



REFERENCE WELLPATH IDENTIFICATION			
Operator	ANTERO RESOURCES CORPORATION	Well	Viewer Unit 1H
Field	Wetzel	API	47-103-03589-0000
Facility	Furbee Pad	Wellbore	Viewer Unit 1H AWB
Slot	Slot G		

WELLPATH DATA (251 stations)																
MD [ft]	Inclination [°]	Azimuth [°]	TVD [ft]	Vert Sect [ft]	North [ft]	East [ft]	Grid East [US ft]	Grid North [US ft]	Latitude	Longitude	Closure Dist [ft]	Closure Dir [°]	DLS [°/100ft]	Build Rate [°/100ft]	Turn Rate [°/100ft]	Comments
19223.00	90.620	341.160	6970.09	12206.63	11282.08	-4733.93	1711478.13	14375996.77	39°35'15.5196"N	80°44'51.9814"W	12235.01	337.237	0.08	-0.06	0.04	
19318.00	90.550	341.390	6969.12	12301.63	11372.05	-4764.42	1711447.64	14376086.70	39°35'16.4096"N	80°44'52.3677"W	12329.77	337.268	0.25	-0.07	0.24	
19412.00	90.830	341.550	6967.99	12395.62	11461.17	-4794.29	1711417.78	14376175.79	39°35'17.2913"N	80°44'52.7461"W	12423.51	337.300	0.34	0.30	0.17	
19506.00	90.550	341.080	6966.86	12489.61	11550.21	-4824.40	1711387.68	14376264.79	39°35'18.1721"N	80°44'53.1275"W	12517.27	337.330	0.58	-0.30	-0.50	
19600.00	90.370	340.720	6966.10	12583.61	11639.03	-4855.16	1711356.94	14376353.58	39°35'19.0508"N	80°44'53.5172"W	12611.09	337.357	0.43	-0.19	-0.38	
19694.00	90.520	341.490	6965.37	12677.60	11727.96	-4885.60	1711326.51	14376442.47	39°35'19.9305"N	80°44'53.9028"W	12704.89	337.385	0.83	0.16	0.82	
19789.00	90.180	339.900	6964.79	12772.60	11817.61	-4917.01	1711295.12	14376532.09	39°35'20.8175"N	80°44'54.3007"W	12799.72	337.409	1.71	-0.36	-1.67	
19883.00	90.580	341.020	6964.17	12866.59	11906.20	-4948.44	1711263.69	14376620.64	39°35'21.6938"N	80°44'54.6991"W	12893.59	337.431	1.27	0.43	1.19	
19977.00	90.920	341.190	6962.94	12960.58	11995.12	-4978.88	1711233.27	14376709.53	39°35'22.5735"N	80°44'55.0847"W	12987.39	337.458	0.40	0.36	0.18	
20072.00	89.750	341.110	6962.38	13055.57	12085.03	-5009.57	1711202.59	14376799.40	39°35'23.4629"N	80°44'55.4736"W	13082.19	337.485	1.23	-1.23	-0.08	
20167.00	90.150	341.170	6962.46	13150.57	12174.92	-5040.28	1711171.89	14376889.26	39°35'24.3523"N	80°44'55.8626"W	13177.00	337.511	0.43	0.42	0.06	
20261.00	89.880	341.300	6962.44	13244.57	12263.93	-5070.52	1711141.66	14376978.23	39°35'25.2327"N	80°44'56.2457"W	13270.80	337.537	0.32	-0.29	0.14	
20356.00	89.940	341.040	6962.59	13339.57	12353.84	-5101.19	1711111.01	14377068.11	39°35'26.1222"N	80°44'56.6341"W	13365.61	337.563	0.28	0.06	-0.27	
20451.00	90.120	340.990	6962.54	13434.57	12443.68	-5132.09	1711080.12	14377157.91	39°35'27.0109"N	80°44'57.0257"W	13460.44	337.587	0.20	0.19	-0.05	
20545.00	89.970	341.200	6962.47	13528.57	12532.60	-5162.55	1711049.67	14377246.80	39°35'27.8906"N	80°44'57.4116"W	13554.26	337.612	0.27	-0.16	0.22	
20640.00	89.970	341.050	6962.52	13623.57	12622.50	-5193.28	1711018.95	14377336.66	39°35'28.7799"N	80°44'57.8009"W	13649.09	337.636	0.16	0.00	-0.16	
20735.00	90.060	341.180	6962.49	13718.57	12712.38	-5224.03	1710988.22	14377426.51	39°35'29.6691"N	80°44'58.1905"W	13743.91	337.660	0.17	0.09	0.14	
20829.00	89.940	341.230	6962.49	13812.57	12801.37	-5254.31	1710957.94	14377515.46	39°35'30.5494"N	80°44'58.5742"W	13837.73	337.684	0.14	-0.13	0.05	
20924.00	90.000	341.210	6962.54	13907.57	12891.31	-5284.90	1710927.37	14377605.37	39°35'31.4392"N	80°44'58.9616"W	13932.55	337.708	0.07	0.06	-0.02	
21019.00	89.970	340.980	6962.57	14002.57	12981.19	-5315.68	1710896.60	14377695.20	39°35'32.3283"N	80°44'59.3516"W	14027.39	337.731	0.24	-0.03	-0.24	
21113.00	89.970	340.860	6962.61	14096.57	13070.02	-5346.40	1710865.89	14377784.01	39°35'33.2071"N	80°44'59.7409"W	14121.25	337.753	0.13	0.00	-0.13	
21208.00	89.850	340.840	6962.76	14191.57	13159.77	-5377.57	1710834.74	14377873.71	39°35'34.0949"N	80°45'0.1358"W	14216.11	337.773	0.13	-0.13	-0.02	
21301.00	90.090	341.120	6962.81	14284.57	13247.69	-5407.88	1710804.44	14377961.60	39°35'34.9647"N	80°45'0.5199"W	14308.96	337.794	0.40	0.26	0.30	
21395.00	89.970	341.190	6962.76	14378.57	13336.65	-5438.24	1710774.09	14378050.53	39°35'35.8447"N	80°45'0.9046"W	14402.80	337.816	0.15	-0.13	0.07	
21490.00	90.120	340.970	6962.69	14473.57	13426.52	-5469.04	1710743.30	14378140.36	39°35'36.7338"N	80°45'1.2949"W	14497.65	337.837	0.28	0.16	-0.23	
21585.00	89.820	341.180	6962.74	14568.57	13516.38	-5499.85	1710712.50	14378230.19	39°35'37.6228"N	80°45'1.6852"W	14592.50	337.858	0.39	-0.32	0.22	
21679.00	90.030	341.180	6962.86	14662.57	13605.36	-5530.18	1710682.19	14378319.13	39°35'38.5029"N	80°45'2.0694"W	14686.34	337.880	0.22	0.22	0.00	
21774.00	90.250	341.300	6962.83	14757.57	13695.31	-5560.73	1710651.65	14378409.04	39°35'39.3928"N	80°45'2.4565"W	14781.18	337.901	0.26	0.23	0.13	
21868.00	89.910	341.320	6962.50	14851.57	13784.35	-5590.85	1710621.54	14378498.05	39°35'40.2736"N	80°45'2.8382"W	14875.01	337.923	0.36	-0.36	0.02	
21963.00	90.060	341.150	6962.52	14946.57	13874.30	-5621.41	1710590.99	14378587.97	39°35'41.1635"N	80°45'3.2254"W	14969.85	337.944	0.24	0.16	-0.18	



Actual Wellpath Report

Viewer Unit 1H AWP Proj: 22886'
Page 10 of 12



REFERENCE WELLPATH IDENTIFICATION

Operator	ANTERO RESOURCES CORPORATION	Well	Viewer Unit 1H
Field	Wetzel	API	47-103-03589-0000
Facility	Furbee Pad	Wellbore	Viewer Unit 1H AWB
Slot	Slot G		

WELLPATH DATA (251 stations) † = interpolated, ‡ = extrapolated station

MD [ft]	Inclination [°]	Azimuth [°]	TVD [ft]	Vert Sect [ft]	North [ft]	East [ft]	Grid East [US ft]	Grid North [US ft]	Latitude	Longitude	Closure Dist [ft]	Closure Dir [°]	DLS [°/100ft]	Build Rate [°/100ft]	Turn Rate [°/100ft]	Comments
22057.00	89.910	340.920	6962.55	15040.57	13963.20	-5651.96	1710560.45	14378676.83	39°35'42.0429"N	80°45'3.6124"W	15063.72	337.963	0.29	-0.16	-0.24	
22152.00	90.220	341.300	6962.44	15135.57	14053.08	-5682.72	1710529.71	14378766.68	39°35'42.9321"N	80°45'4.0021"W	15158.58	337.983	0.52	0.33	0.40	
22247.00	89.820	341.250	6962.41	15230.57	14143.05	-5713.22	1710499.22	14378856.61	39°35'43.8221"N	80°45'4.3885"W	15253.42	338.003	0.42	-0.42	-0.05	
22341.00	90.000	341.160	6962.55	15324.57	14232.04	-5743.50	1710468.95	14378945.56	39°35'44.7024"N	80°45'4.7723"W	15347.27	338.023	0.21	0.19	-0.10	
22435.00	90.000	341.080	6962.55	15418.57	14320.98	-5773.92	1710438.54	14379034.47	39°35'45.5823"N	80°45'5.1577"W	15441.14	338.042	0.09	0.00	-0.09	
22530.00	89.970	340.980	6962.58	15513.57	14410.82	-5804.80	1710407.67	14379124.28	39°35'46.4710"N	80°45'5.5490"W	15536.01	338.060	0.11	-0.03	-0.11	
22625.00	89.880	341.180	6962.70	15608.57	14500.69	-5835.60	1710376.88	14379214.11	39°35'47.3600"N	80°45'5.9393"W	15630.88	338.078	0.23	-0.09	0.21	
22719.00	90.000	340.980	6962.80	15702.57	14589.61	-5866.08	1710346.42	14379302.99	39°35'48.2397"N	80°45'6.3255"W	15724.75	338.096	0.25	0.13	-0.21	
22814.00	90.090	341.130	6962.73	15797.57	14679.47	-5896.93	1710315.59	14379392.81	39°35'49.1286"N	80°45'6.7164"W	15819.62	338.114	0.18	0.09	0.16	
22861.00	90.000	341.180	6962.69	15844.57	14723.95	-5912.11	1710300.41	14379437.28	39°35'49.5686"N	80°45'6.9087"W	15866.56	338.123	0.22	-0.19	0.11	
22886.00‡	90.000	341.180	6962.69	15869.57	14747.61	-5920.17	1710292.35	14379460.93	39°35'49.8027"N	80°45'7.0109"W	15891.52	338.128	0.00	0.00	0.00	Projected MD at TD: 22886'

HOLE & CASING SECTIONS - Ref Wellbore: Viewer Unit 1H AWB Ref Wellpath: Viewer Unit 1H AWP Proj: 22886'

String/Diameter	Start MD [ft]	End MD [ft]	Interval [ft]	Start TVD [ft]	End TVD [ft]	Start N/S [ft]	Start E/W [ft]	End N/S [ft]	End E/W [ft]
20in Conductor	25.50	125.50	100.00	25.50	125.50	0.00	0.00	0.13	-0.05
17.5in Open Hole	125.50	697.00	571.50	125.50	696.98	0.13	-0.05	-0.08	3.97
13.375in Casing Surface	25.50	677.00	651.50	25.50	676.98	0.00	0.00	-0.01	3.80
12.25in Open Hole	697.00	3443.00	2746.00	696.98	3442.40	-0.08	3.97	18.33	-12.48
9.625in Casing Intermediate	25.50	3413.00	3387.50	25.50	3412.41	0.00	0.00	18.23	-11.67
8.75in Open Hole	3443.00	6312.00	2869.00	3442.40	6250.41	18.33	-12.48	-334.74	-454.59
8.5in Open Hole	6312.00	22886.00	16574.00	6250.41	6962.69	-334.74	-454.59	14747.61	-5920.17
5.5in Casing Production	25.50	22866.00	22840.50	25.50	6962.69	0.00	0.00	14728.68	-5913.72

RECEIVED
 Office of Oil and Gas
 JUL 01 2024
 WV Department of
 Environmental Protection



Actual Wellpath Report

Viewer Unit 1H AWP Proj: 22886'

Page 11 of 12



REFERENCE WELLPATH IDENTIFICATION

Operator	ANTERO RESOURCES CORPORATION	Well	Viewer Unit 1H
Field	Wetzel	API	47-103-03589-0000
Facility	Furbee Pad	Wellbore	Viewer Unit 1H AWB
Slot	Slot G		

TARGETS

Name	TVD [ft]	North [ft]	East [ft]	Grid East [US ft]	Grid North [US ft]	Latitude	Longitude	Shape
Viewer Unit 1H POE Rev-2	6990.00	26.65	-805.53	1715404.97	14364745.79	39°33'24.1681"N	80°44'2.2302"W	point
Viewer Unit 1H AZI Rev-2	7018.00	503.09	-1034.70	1715175.89	14365222.04	39°33'28.8836"N	80°44'5.1381"W	point
Viewer Unit 1H BHL Rev-2	7018.00	14741.61	-5897.64	1710314.87	14379454.93	39°35'49.7428"N	80°45'6.7233"W	point
Viewer Unit 1H LP Rev-2	7018.00	200.43	-901.05	1715309.49	14364919.50	39°33'25.8884"N	80°44'3.4432"W	point
Viewer Unit 1H 50' L/R Hard Line	7500.00	7622.35	-3466.17	1712745.38	14372338.49	39°34'39.3144"N	80°44'35.9221"W	rectangle
2D Rectangle 15046 x 100.								

WELLPATH COMPOSITION - Ref Wellbore: Viewer Unit 1H AWB Ref Wellpath: Viewer Unit 1H AWP Proj: 22886'

Start MD [ft]	End MD [ft]	Positional Uncertainty Model	Log Name/Comment	Wellbore	Survey Date
25.50	734.00	Gyrodata 2015 - GC+WMR+DPIPE	01_Gyrodata MS Gyro <17-1/2"> (100'-734')	Viewer Unit 1H AWB	10/9/2023
734.00	3370.00	BH NaviTrak (2019) (Axial Corr+HRGM)	02_APS EM <12-1/4"> (734')(768'-3370')	Viewer Unit 1H AWB	10/9/2023
3370.00	6237.00	BH NaviTrak (2019) (Axial Corr+HRGM)	03_APS EM <8-3/4"> (3370')(3489'-6237')	Viewer Unit 1H AWB	10/9/2023
6237.00	22886.00	BH AutoTrak Curve/eXpress (2019) (HRGM, Short spacing)	04_BH AT Curve <8-1/2"> (6237')(6275'-22861')	Viewer Unit 1H AWB	10/9/2023



Actual Wellpath Report

Viewer Unit 1H AWP Proj: 22886'
Page 12 of 12



REFERENCE WELLPATH IDENTIFICATION			
Operator	ANTERO RESOURCES CORPORATION	Well	Viewer Unit 1H
Field	Wetzel	API	47-103-03589-0000
Facility	Furbee Pad	Wellbore	Viewer Unit 1H AWB
Slot	Slot G		

COMMENTS
<p>Wellpath general comments API: 47-103-03589-0000 BH Job #: 111949167 Rig: H&P 317 Duration: 10/10/2023-10/19/2023 Gyrodata MS Gyro <17-1/2"> (100'-734') APS EM <12-1/4"> (734')(768'-3370') APS EM <8-3/4"> (3370')(3489'-6237') BH AT Curve <8-1/2"> (6237')(6275'-22861') Sycamore: 6737' MD Middlesex: 6887' MD Burkett: 7029' MD Tully: 7078' MD Marcellus POE: 7266' MD Projected MD at TD: 22886'</p>

RECEIVED
Office of Oil and Gas
JUL 01 2024
WV Department of
Environmental Protection