

WW-7
8-30-06



West Virginia Department of Environmental Protection
Office of Oil and Gas

WELL LOCATION FORM: GPS

API: 47-103-72333 WELL NO.: 7298

FARM NAME: I.D. MORGAN

RESPONSIBLE PARTY NAME: WEST VIRGINIA LAND RESOURCES INC.

COUNTY: WETZEL DISTRICT: GRANT

QUADRANGLE: BIG RUN W.VA

SURFACE OWNER: MAGNOLIA LAND PARTNERS

ROYALTY OWNER: _____

UTM GPS NORTHING: 4,373,275 m (1073')

UTM GPS EASTING: 540,640 m GPS ELEVATION: 327 m

The Responsible Party named above has chosen to submit GPS coordinates in lieu of preparing a new well location plat for a plugging permit or assigned API number on the above well. The Office of Oil and Gas will not accept GPS coordinates that do not meet the following requirements:

1. Datum: NAD 1983, Zone: 17 North, Coordinate Units: meters, Altitude: height above mean sea level (MSL) – meters.
2. Accuracy to Datum – 3.05 meters
3. Data Collection Method:

Survey grade GPS _____; Post Processed Differential _____
 Real-Time Differential _____
 Mapping Grade GPS X; Post Processed Differential X
 Real-Time Differential _____

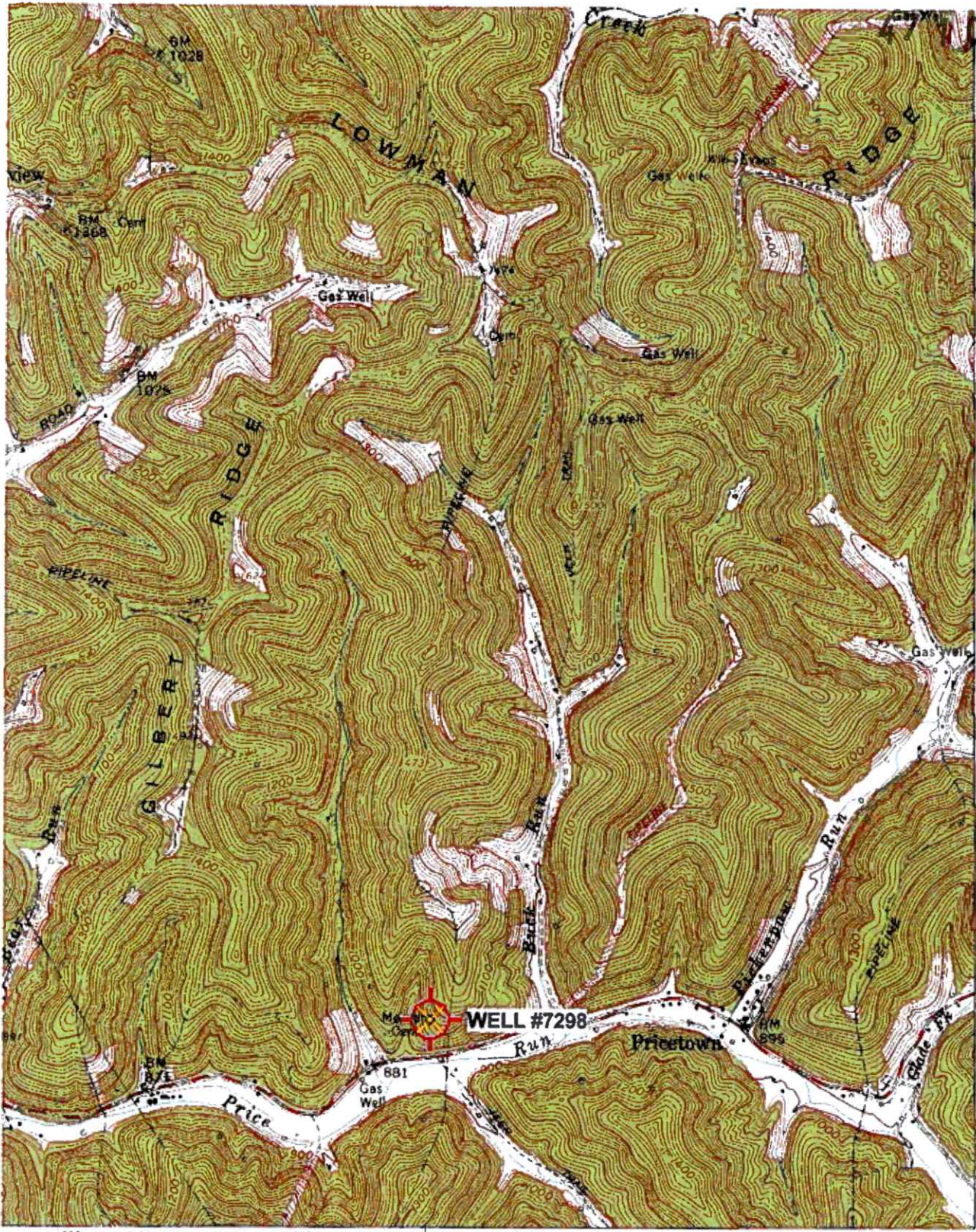
RECEIVED
Office of Oil and Gas
DEC 30 2022
WV Department of
Environmental Protection

4. Letter size copy of the topography map showing the well location.

I the undersigned, hereby certify this data is correct to the best of my knowledge and belief and shows all the information required by law and the regulations issued and prescribed by the Office of Oil and Gas.

[Signature] Professional Surveyor DECEMBER 17, 2022
 Signature Title Date

0303549



4377
32'30"

4376

4375

4374

4373

4372

4371

4370

4369

4368

4367

4366

4365

4364

4363

4362

4361

4360

4359

4358

4357

4356

4355

4354

4353

4352

4351

4350

4349

4348

4347

4346

4345

4344

4343

4342

4341

4340

4339

4338

4337

4336

4335

4334

4333

4332

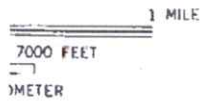
4331

4330

RECEIVED
Office of Oil and Gas
DEC 30 2022
WV Department of
Environmental Protection

39 32'30" 40 41 80°30'

INTERIOR-GEOLOGICAL SURVEY, RESTON, VIRGINIA-1973
5420000E



QUADRANGLE LOCATION

'Big Run: WV' Scale: 1" = 0.379Mi 610M 2 000Ft 1 Mi = 2 640" 1 cm = 240M

ROAD CLASSIFICATION

- Heavy-duty —————
- Medium-duty —————
- Light-duty —————
- Unimproved dirt - - - - -
- Slate Route —————

(WALLACE)
4882 N.W.

BIG RUN, W. VA.
SE/4 LITTLETON 15' QUADRANGLE
N3930—W8030/7.5

01/20/2023