



West Virginia Department of Environmental Protection
Office of Oil and Gas

WELL LOCATION FORM: GPS

API: 47-103-72325 WELL NO.: 7428

FARM NAME: B.W. PETERSON

RESPONSIBLE PARTY NAME: WEST VIRGINIA LAND RESOURCES INC.

COUNTY: WETZEL DISTRICT: GRANT

QUADRANGLE: BIG RUN W.VA

SURFACE OWNER: JOHN DALE COEN

ROYALTY OWNER: _____

UTM GPS NORTHING: 4,374,202 m

UTM GPS EASTING: 541,471 m GPS ELEVATION: 387 m (1269')

The Responsible Party named above has chosen to submit GPS coordinates in lieu of preparing a new well location plat for a plugging permit or assigned API number on the above well. The Office of Oil and Gas will not accept GPS coordinates that do not meet the following requirements:

- Datum: NAD 1983, Zone: 17 North, Coordinate Units: meters, Altitude: height above mean sea level (MSL) – meters.
- Accuracy to Datum – 3.05 meters
- Data Collection Method:

Survey grade GPS _____: Post Processed Differential _____

Real-Time Differential _____

Mapping Grade GPS X: Post Processed Differential X

Real-Time Differential _____

- Letter size copy of the topography map showing the well location.**

I the undersigned, hereby certify this data is correct to the best of my knowledge and belief and shows all the information required by law and the regulations issued and prescribed by the Office of Oil and Gas.

Signature

Professional Surveyor

Title

NOVEMBER 1, 2022

Date

RECEIVED
Office of Oil and Gas

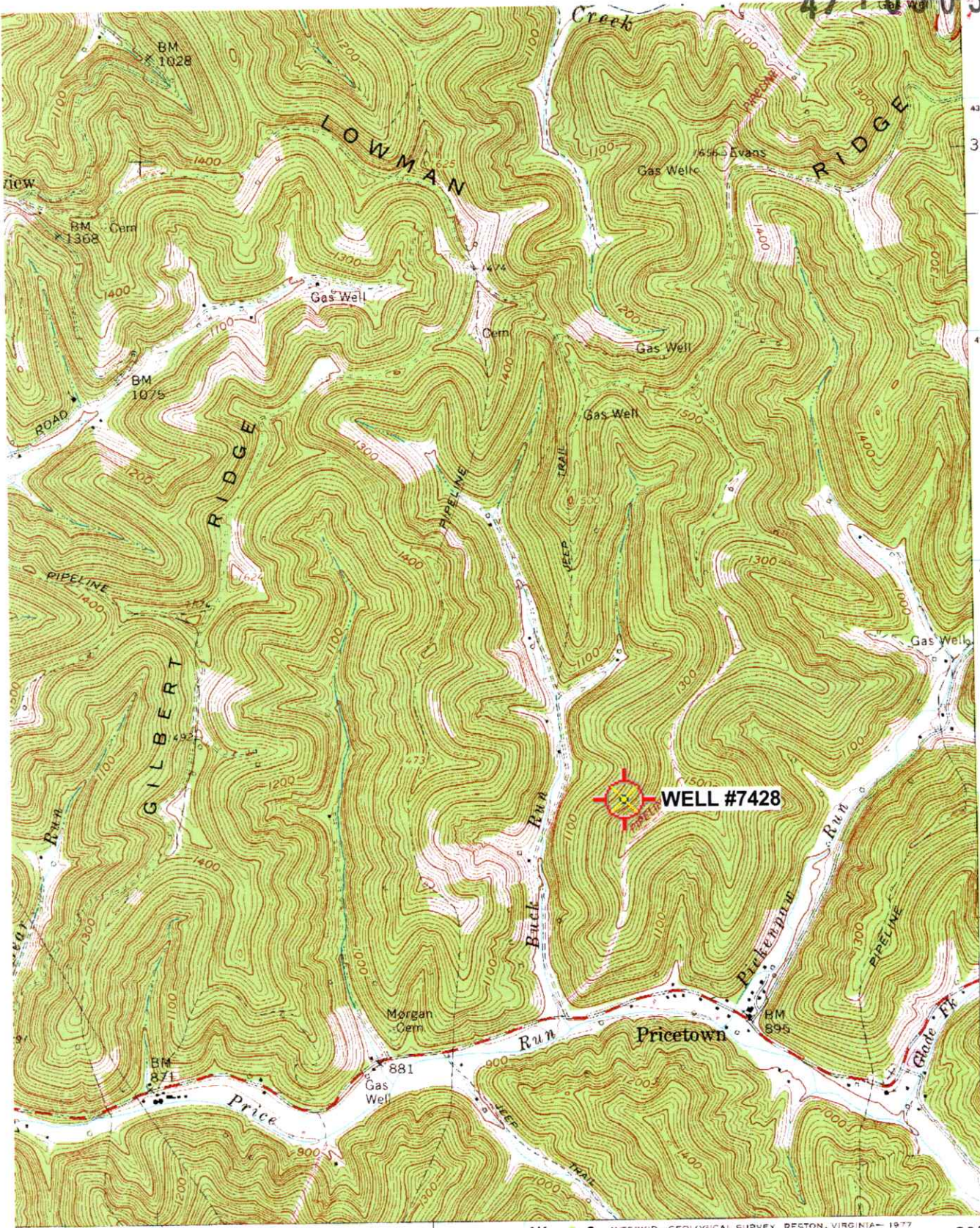
DEC 12 2022

RECEIVED
WV Department of Environmental Protection
Office of Oil and Gas

DEC 12 2022

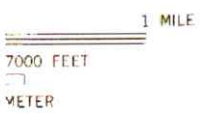
WV Department of Environmental Protection

47103035474



4371
32'30"
4376
4375
4374
4373
39° 30'
80° 30'

RECEIVED
Office of Oil and Gas
DEC 12 2022
WV Department of
Environmental Protection
WALLACE
4862 IV NW



'Big Run: WV' Scale: 1" = 0.379Mi 610Mt 2,000Ft, 1 Mi = 2.640", 1 cm = 240Mt

ROAD CLASSIFICATION

Heavy-duty		Light-duty	
Medium-duty		Unimproved dirt	
State Route			

BIG RUN, W. VA.
SE/4 LITTLETON 15' QUADRANGLE
N3930—W8030/7.5

● INTERIOR—GEOLOGICAL SURVEY, RESTON, VIRGINIA—1977
542000mE