

47 103 035 389

WW-7  
8-30-06



West Virginia Department of Environmental Protection  
Office of Oil and Gas

WELL LOCATION FORM: GPS

API: 47-103-72330 WELL NO.: 7345

FARM NAME: SPENCER WALTERS

RESPONSIBLE PARTY NAME: WEST VIRGINIA LAND RESOURCES INC.

COUNTY: WETZEL DISTRICT: GRANT

QUADRANGLE: BIG RUN W.VA

SURFACE OWNER: WILLIAM F. MCFADDEN

ROYALTY OWNER: \_\_\_\_\_

UTM GPS NORTHING: 4,373,688 m (1066')

UTM GPS EASTING: 541,262 m GPS ELEVATION: 325 m

The Responsible Party named above has chosen to submit GPS coordinates in lieu of preparing a new well location plat for a plugging permit or assigned API number on the above well. The Office of Oil and Gas will not accept GPS coordinates that do not meet the following requirements:

- Datum: NAD 1983, Zone: 17 North, Coordinate Units: meters, Altitude: height above mean sea level (MSL) – meters.
- Accuracy to Datum – 3.05 meters
- Data Collection Method:

Survey grade GPS \_\_\_\_\_: Post Processed Differential \_\_\_\_\_

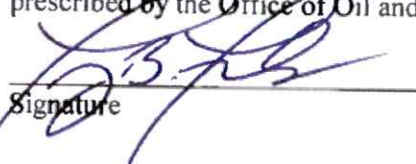
Real-Time Differential \_\_\_\_\_

Mapping Grade GPS : Post Processed Differential

Real-Time Differential \_\_\_\_\_

- Letter size copy of the topography map showing the well location.

I the undersigned, hereby certify this data is correct to the best of my knowledge and belief and shows all the information required by law and the regulations issued and prescribed by the Office of Oil and Gas.

  
Signature

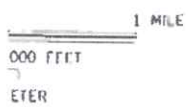
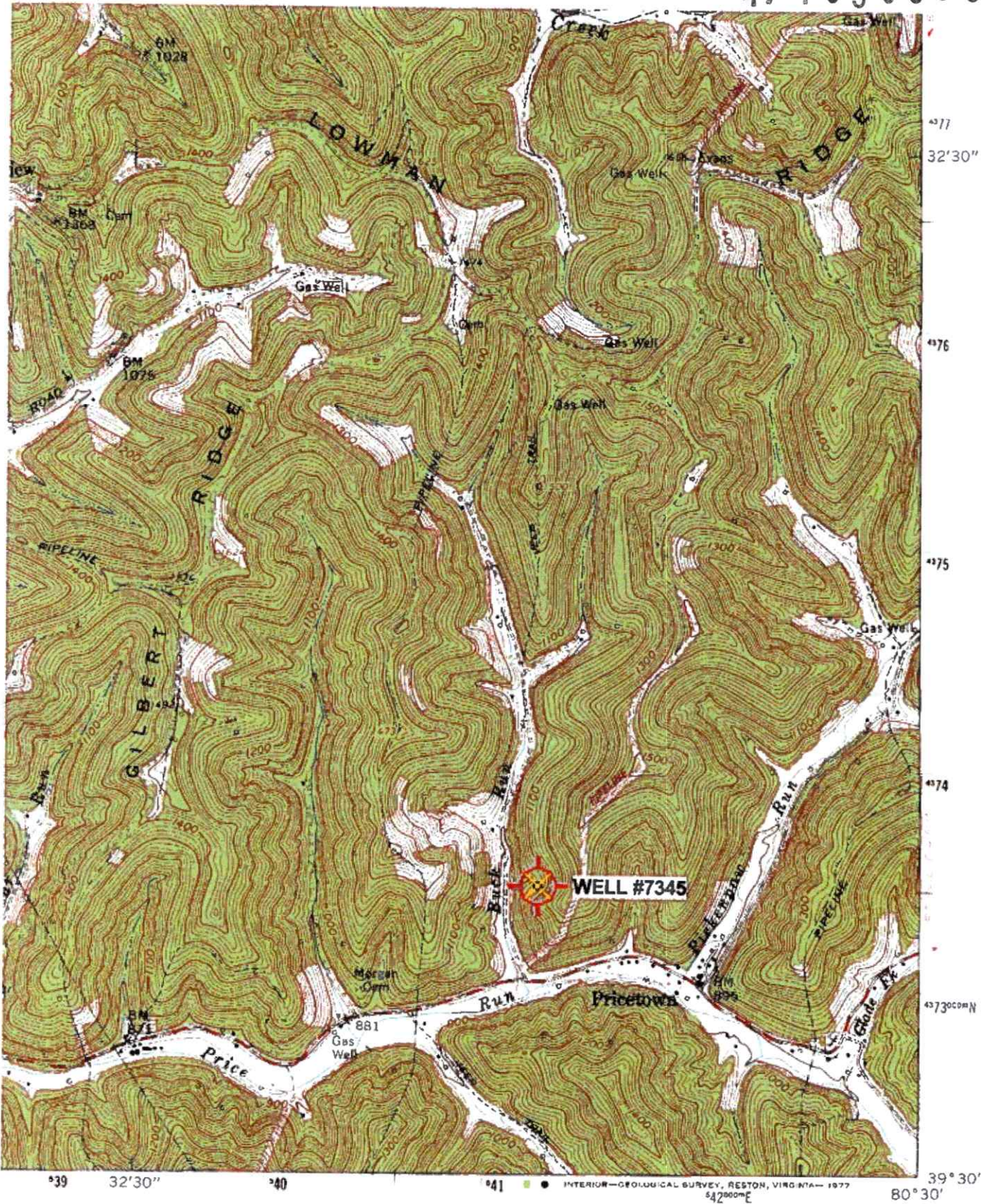
Professional Surveyor  
Title

SEPTEMBER 12, 2022  
Date

RECEIVED  
Office of Oil and Gas  
OCT 24 2022  
WV Department of  
Environmental Protection

12/23/2022

47 103035 38P



'Big Run; WV' Scale: 1" = 0.379Mi 610Mi 2,000Ft, 1 Mi = 2.640" , 1 cm = 240Mt

ROAD CLASSIFICATION

Heavy-duty		Light-duty	
Medium-duty		Unimproved dirt	
		Slate Route	

BIG RUN, W. VA.  
SE/4 LITTLETON 15' QUADRANGLE  
N3930—W8030/7.5

(WALLACE)  
4582 N NW  
RECEIVED  
Office of Oil and Gas  
OCT 24 2022  
WV Department of  
Environmental Protection  
12/23/2022