

47 1 0 3 0 3 5 2 5 P

WW-7
8-30-06



West Virginia Department of Environmental Protection
Office of Oil and Gas

WELL LOCATION FORM: GPS

API: 47-103-30635 WELL NO.: 7278

FARM NAME: ROBERT SMITH

RESPONSIBLE PARTY NAME: WEST VIRGINIA LAND RESOURCES INC.

COUNTY: WETZEL DISTRICT: GRANT

QUADRANGLE: BIG RUN W.VA

SURFACE OWNER: EDGAR D. & EDGAR D. BYARD JR.

ROYALTY OWNER: 2 345

UTM GPS NORTHING: 4,372,438 m 1069.1

UTM GPS EASTING: 541,475 m GPS ELEVATION: 326 m

493

The Responsible Party named above has chosen to submit GPS coordinates in lieu of preparing a new well location plat for a plugging permit or assigned API number on the above well. The Office of Oil and Gas will not accept GPS coordinates that do not meet the following requirements:

1. Datum: NAD 1983, Zone: 17 North, Coordinate Units: meters, Altitude: height above mean sea level (MSL) – meters.
2. Accuracy to Datum – 3.05 meters
3. Data Collection Method:

Survey grade GPS : Post Processed Differential

Real-Time Differential

Mapping Grade GPS : Post Processed Differential

Real-Time Differential

RECEIVED
Office of Oil and Gas
AUG 15 2022
WV Department of
Environmental Protection

4. Letter size copy of the topography map showing the well location.

I the undersigned, hereby certify this data is correct to the best of my knowledge and belief and shows all the information required by law and the regulations issued and prescribed by the Office of Oil and Gas.

30620

Professional Surveyor

JUNE 15, 2022

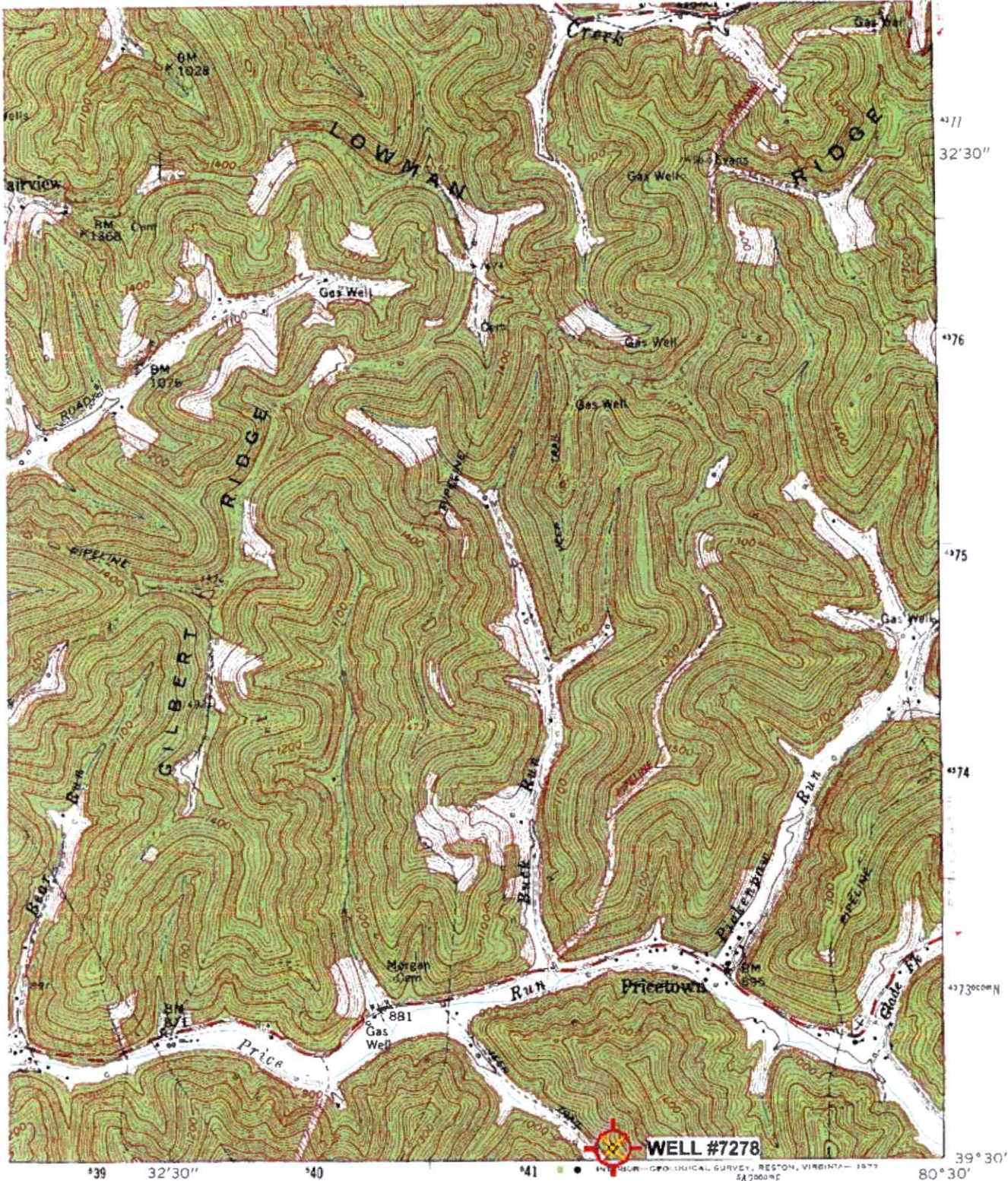
Signature

Title

Date

09/09/2022

4710303525P



'Big Run; WV' Scale: 1" = 0.379Mi 610Mt, 2,000Ft, 1 Mi = 2.640", 1 cm = 240Mt

ROAD CLASSIFICATION

- Heavy-duty —————
- Medium-duty ————
- Light duty —————
- Unimproved dirt ————
- Slate Route ————

RECEIVED
Office of Oil and Gas

AUG 15 2022

WV Department of
Environmental Protection

BIG RUN, W. VA.
SE/4 LITTLETON 15' QUADRANGLE
N3930-WR030/7.5

09/09/2022