



ANTERO RESOURCES CORPORATION



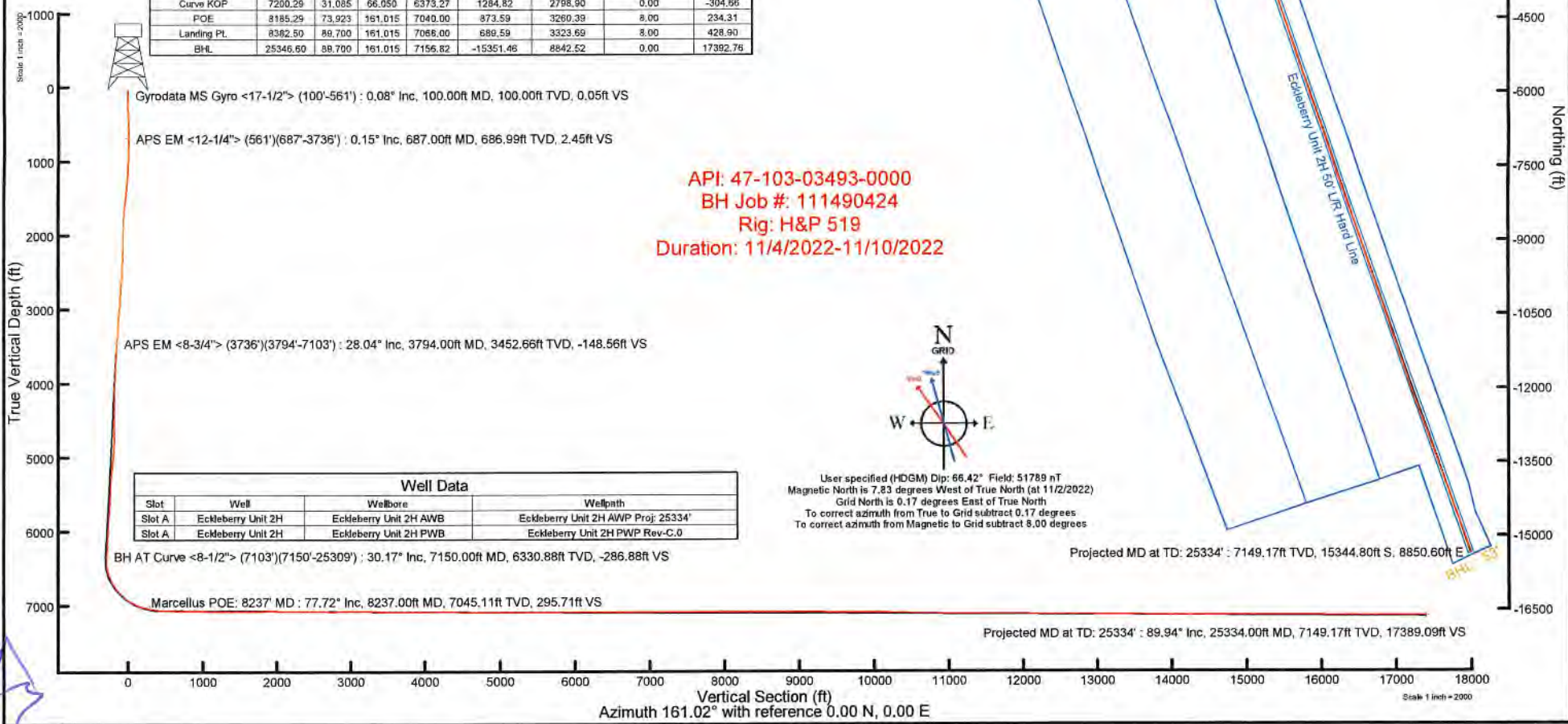
Location: Wetzel County, WV
Field: Wetzel
Facility: Furbee Pad

Slot: Slot A
Well: Eckleberry Unit 2H
Wellbore: Eckleberry Unit 2H PWB

Plot reference wellpath is Eckleberry Unit 2H PWP Rev-C.0	Grid System: NAD27 / UTM Zone 17 North, US feet
True vertical depths are referenced to H&P 519 (RKB)	North Reference: Grid north
Reference wellpath measured depths are referenced to H&P 519 (RKB)	Scale: True distance
H&P 519 (RKB) to Mean Sea Level: 1242 feet	Coordinates are in feet referenced to Slot
Mean Sea Level to Ground level (At Slot: Slot A): -1212 feet	Depths are in feet
Other wellpath MDs are referenced to each path's default MD datum	Created by: edstaylor on 2022-11-15; Database: WA_MPL_EASTERNUS_Datm

Location Information					
Facility Name	Grid East (US ft)	Grid North (US ft)	Latitude	Longitude	
Furbee Pad	1716103.700	14394954.390	39°33'26.2100"N	80°43'53.2980"W	
Slot	Local N (ft)	Local E (ft)	Grid East (US ft)	Grid North (US ft)	Latitude
Slot A	0.03	-0.03	1716103.670	14394954.420	39°33'26.2103"N
Comment	Eckleberry Unit 2H				
H&P 519 (RKB) to Ground level (At Slot: Slot A)					30ft
Mean Sea Level to Ground level (At Slot: Slot A)					-1212ft
H&P 519 (RKB) to Mean Sea Level					1242ft

Well Profile Data								
Design Comment	MD (ft)	Inc (°)	Az (°)	TVD (ft)	Local N (ft)	Local E (ft)	DLS (°/100ft)	VS (ft)
Tie On	3736.00	28.380	62.590	3401.55	556.83	1174.60	1.09	-144.53
Proj. to Bottom	3810.00	28.380	62.590	3466.66	573.02	1205.83	0.00	-149.69
Drill Out	3890.00	28.380	62.590	3537.05	590.53	1239.58	0.00	-155.26
End of 3D Arc	3996.74	31.095	66.050	3629.73	613.40	1287.30	3.00	-161.37
Curve KOP	7200.29	31.085	66.050	6373.27	1284.82	2798.90	0.00	-304.66
POE	8185.29	73.923	161.015	7040.00	873.59	3260.39	8.00	234.31
Landing PL	8382.50	89.700	161.015	7068.00	689.59	3323.69	8.00	428.90
BHL	25346.60	89.700	161.015	7156.82	-15351.46	8842.52	0.00	17392.75



Well Data			
Slot	Well	Wellbore	Wellpath
Slot A	Eckleberry Unit 2H	Eckleberry Unit 2H AWB	Eckleberry Unit 2H AWP Proj: 25334'
Slot A	Eckleberry Unit 2H	Eckleberry Unit 2H PWB	Eckleberry Unit 2H PWP Rev-C.0

BH AT Curve <8-1/2"> (7103')(7150'-25309') : 30.17° Inc, 7150.00ft MD, 6330.88ft TVD, -286.88ft VS

Marcellus POE: 8237' MD : 77.72° Inc, 8237.00ft MD, 7045.11ft TVD, 295.71ft VS

Gyrodata MS Gyro <17-1/2"> (100'-561') : 0.08° Inc, 100.00ft MD, 100.00ft TVD, 0.05ft VS

APS EM <12-1/4"> (561')(687'-3736') : 0.15° Inc, 687.00ft MD, 686.99ft TVD, 2.45ft VS

APS EM <8-3/4"> (3736')(3794'-7103') : 28.04° Inc, 3794.00ft MD, 3452.66ft TVD, -148.56ft VS

BH AT Curve <8-1/2"> (7103')(7150'-25309') : 6330.88ft TVD, 1258.08ft N, 2775.80ft E

APS EM <8-3/4"> (3736')(3794'-7103') : 3452.66ft TVD, 569.46ft N, 1198.94ft E

APS EM <12-1/4"> (561')(687'-3736') : 686.99ft TVD, 1.95ft S, 1.87ft E

Gyrodata MS Gyro <17-1/2"> (100'-561') : 100.00ft TVD, 0.04ft S, 0.03ft E

Marcellus POE: 8237' MD : 7045.11ft TVD, 821.00ft N, 3296.28ft E



Actual Wellpath Report

Eckleberry Unit 2H AWP Proj: 25334'
Page 1 of 13



REFERENCE WELLPATH IDENTIFICATION

Operator	ANTERO RESOURCES CORPORATION	Well	Eckleberry Unit 2H
Field	Wetzel	API	47-103-03493-0000
Facility	Furbee Pad	Wellbore	Eckleberry Unit 2H AWB
Slot	Slot A		

REPORT SETUP INFORMATION

Projection System	NAD27 / UTM Zone 17 North, US feet	Software System	WellArchitect® 6.0
North Reference	Grid	User	Edsaryar
Scale	0.999607	Report Generated	11/15/2022 at 4:30:36 PM
Convergence at slot	0.17° East	Database	WA_MPL_EASTERNUS_Defn

WELLPATH LOCATION

	Local coordinates		Grid coordinates		Geographic coordinates	
	North[ft]	East[ft]	Easting[US ft]	Northing[US ft]	Latitude	Longitude
Slot Location	0.03	-0.03	1716103.67	14364954.42	39°33'26.2103"N	80°43'53.2984"W
Facility Reference Pt			1716103.70	14364954.39	39°33'26.2100"N	80°43'53.2980"W
Field Reference Pt			0.00	0.00	0°00'0.0000"	85°29'19.3013"W

WELLPATH DATUM

Calculation method	Minimum curvature	H&P 519 (RKB) to Facility Vertical Datum	1242.00ft
Horizontal Reference Pt	Slot	H&P 519 (RKB) to Mean Sea Level	1242.00ft
Vertical Reference Pt	H&P 519 (RKB)	H&P 519 (RKB) to Ground Level at Slot (Slot A)	30.00ft
MD Reference Pt	H&P 519 (RKB)	Section Origin	N 0.00, E 0.00 ft
Field Vertical Reference	Mean Sea Level	Section Azimuth	161.02°



Actual Wellpath Report

Eckleberry Unit 2H AWP Proj: 25334'
Page 2 of 13



REFERENCE WELLPATH IDENTIFICATION			
Operator	ANTERO RESOURCES CORPORATION	Well	Eckleberry Unit 2H
Field	Wetzel	API	47-103-03493-0000
Facility	Furbee Pad	Wellbore	Eckleberry Unit 2H AWB
Slot	Slot A		

WELLPATH DATA (279 stations) † = interpolated, ‡ = extrapolated station																
MD [ft]	Inclination [°]	Azimuth [°]	TVD [ft]	Vert Sect [ft]	North [ft]	East [ft]	Grid East [US ft]	Grid North [US ft]	Latitude	Longitude	Closure Dist [ft]	Closure Dir [°]	DLS ["/100ft]	Build Rate ["/100ft]	Turn Rate ["/100ft]	Comments
0.00†	0.000	139.230	0.00	0.00	0.00	0.00	1716103.67	14364954.42	39°33'26.2103"N	80°43'53.2984"W	0.00	0.000	0.00	0.00	0.00	
30.00	0.000	139.230	30.00	0.00	0.00	0.00	1716103.67	14364954.42	39°33'26.2103"N	80°43'53.2984"W	0.00	0.000	0.00	0.00	0.00	
100.00	0.080	139.230	100.00	0.05	-0.04	0.03	1716103.70	14364954.38	39°33'26.2100"N	80°43'53.2980"W	0.05	139.230	0.11	0.11	0.00	Gyrodata MS Gyro <17-1/2"> (100'-561')
200.00	0.070	139.390	200.00	0.17	-0.14	0.12	1716103.79	14364954.28	39°33'26.2090"N	80°43'53.2969"W	0.18	139.284	0.01	-0.01	0.16	
300.00	0.270	151.660	300.00	0.46	-0.39	0.27	1716103.94	14364954.03	39°33'26.2065"N	80°43'53.2950"W	0.47	145.417	0.20	0.20	12.27	
400.00	0.410	158.280	400.00	1.05	-0.93	0.51	1716104.18	14364953.49	39°33'26.2011"N	80°43'53.2919"W	1.06	151.106	0.15	0.14	6.62	
500.00	0.380	124.950	500.00	1.67	-1.45	0.92	1716104.59	14364952.97	39°33'26.1960"N	80°43'53.2867"W	1.72	147.718	0.23	-0.03	-33.33	
561.00	0.450	109.950	560.99	1.99	-1.65	1.31	1716104.98	14364952.77	39°33'26.1940"N	80°43'53.2818"W	2.11	141.584	0.21	0.11	-24.59	
687.00	0.150	143.050	686.99	2.45	-1.95	1.87	1716105.54	14364952.47	39°33'26.1910"N	80°43'53.2746"W	2.70	136.166	0.27	-0.24	26.27	APS EM <12-1/4"> (561')(687'-3736')
778.00	1.630	74.270	777.98	2.64	-1.69	3.19	1716106.86	14364952.73	39°33'26.1935"N	80°43'53.2577"W	3.61	117.979	1.74	1.63	-75.58	
873.00	4.730	65.970	872.82	2.37	0.27	8.07	1716111.74	14364954.69	39°33'26.2127"N	80°43'53.1954"W	8.07	88.104	3.29	3.26	-8.74	
959.00	7.650	65.250	958.31	1.48	4.11	16.51	1716120.17	14364958.53	39°33'26.2505"N	80°43'53.0875"W	17.01	76.025	3.40	3.40	-0.84	
1050.00	10.530	64.110	1048.16	-0.13	10.28	29.49	1716133.15	14364964.69	39°33'26.3110"N	80°43'52.9215"W	31.23	70.789	3.17	3.16	-1.25	
1145.00	13.320	61.540	1141.10	-2.97	19.28	46.93	1716150.58	14364973.70	39°33'26.3995"N	80°43'52.6986"W	50.73	67.660	2.99	2.94	-2.71	
1239.00	16.430	59.920	1231.94	-7.32	31.11	67.95	1716171.60	14364985.52	39°33'26.5158"N	80°43'52.4296"W	74.74	65.402	3.34	3.31	-1.72	
1334.00	19.750	58.930	1322.23	-13.27	46.13	93.34	1716196.97	14365000.53	39°33'26.6635"N	80°43'52.1050"W	104.11	63.699	3.51	3.49	-1.04	
1429.00	22.520	59.410	1410.83	-20.29	63.68	122.75	1716226.37	14365018.07	39°33'26.8360"N	80°43'51.7288"W	138.28	62.582	2.92	2.92	0.51	
1523.00	25.190	58.770	1496.79	-28.16	83.21	155.36	1716258.97	14365037.60	39°33'27.0282"N	80°43'51.3117"W	176.24	61.826	2.85	2.84	-0.68	
1617.00	28.820	58.810	1580.53	-37.20	105.32	191.86	1716295.45	14365059.70	39°33'27.2456"N	80°43'50.8449"W	218.87	61.234	3.86	3.86	0.04	
1712.00	31.780	61.180	1662.55	-46.32	129.25	233.37	1716336.95	14365083.62	39°33'27.4808"N	80°43'50.3139"W	266.77	61.021	3.36	3.12	2.49	
1806.00	32.040	65.440	1742.35	-52.98	151.55	277.74	1716381.30	14365105.91	39°33'27.6999"N	80°43'49.7466"W	316.40	61.381	2.41	0.28	4.53	
1901.00	31.570	68.420	1823.09	-56.55	171.17	323.79	1716427.33	14365125.52	39°33'27.8925"N	80°43'49.1579"W	366.25	62.137	1.73	-0.49	3.14	
1995.00	31.090	67.980	1903.39	-58.96	189.32	369.17	1716472.70	14365143.66	39°33'28.0705"N	80°43'48.5778"W	414.89	62.850	0.57	-0.51	-0.47	
2090.00	31.610	69.430	1984.52	-60.95	207.26	415.22	1716518.73	14365161.60	39°33'28.2465"N	80°43'47.9892"W	464.08	63.473	0.96	0.55	1.53	
2184.00	31.450	70.130	2064.64	-62.01	224.25	461.35	1716564.84	14365178.59	39°33'28.4130"N	80°43'47.3997"W	512.97	64.076	0.42	-0.17	0.74	
2278.00	31.310	68.170	2144.89	-63.61	241.67	507.09	1716610.56	14365196.00	39°33'28.5838"N	80°43'46.8151"W	561.73	64.518	1.10	-0.15	-2.09	
2373.00	31.600	68.170	2225.93	-66.07	260.11	553.10	1716656.56	14365214.42	39°33'28.7646"N	80°43'46.2268"W	611.21	64.814	0.31	0.31	0.00	
2468.00	32.280	66.530	2306.55	-69.30	279.46	599.48	1716702.91	14365233.77	39°33'28.9546"N	80°43'45.6340"W	661.42	65.006	1.16	0.72	-1.73	
2562.00	32.810	65.860	2385.79	-73.55	299.88	645.74	1716749.16	14365254.18	39°33'29.1550"N	80°43'45.0425"W	711.98	65.090	0.68	0.56	-0.71	
2657.00	31.880	65.790	2466.05	-78.15	320.69	692.11	1716795.51	14365274.98	39°33'29.3593"N	80°43'44.4497"W	762.80	65.139	0.98	-0.98	-0.07	



Actual Wellpath Report

Eckleberry Unit 2H AWP Proj: 25334'
Page 3 of 13



REFERENCE WELLPATH IDENTIFICATION				
Operator	ANTERO RESOURCES CORPORATION		Well	Eckleberry Unit 2H
Field	Wetzel		API	47-103-03493-0000
Facility	Furbee Pad		Wellbore	Eckleberry Unit 2H AWB
Slot	Slot A			

WELLPATH DATA (279 stations)																
MD [ft]	Inclination [°]	Azimuth [°]	TVD [ft]	Vert Sect [ft]	North [ft]	East [ft]	Grid East [US ft]	Grid North [US ft]	Latitude	Longitude	Closure Dist [ft]	Closure Dir [°]	DLS [°/100ft]	Build Rate [°/100ft]	Turn Rate [°/100ft]	Comments
2751.00	31.600	65.300	2545.99	-82.87	341.16	737.13	1716840.51	14365295.45	39°33'29.5603"N	80°43'43.8742"W	812.25	65.164	0.40	-0.30	-0.52	
2846.00	31.860	64.010	2626.79	-88.41	362.55	782.28	1716885.64	14365316.83	39°33'29.7703"N	80°43'43.2970"W	862.21	65.134	0.76	0.27	-1.36	
2940.00	30.640	65.140	2707.15	-93.89	383.49	826.31	1716929.66	14365337.76	39°33'29.9760"N	80°43'42.7339"W	910.97	65.104	1.44	-1.30	1.20	
3035.00	29.310	64.620	2789.45	-98.97	403.64	869.29	1716972.61	14365357.90	39°33'30.1738"N	80°43'42.1845"W	958.43	65.093	1.43	-1.40	-0.55	
3130.00	28.620	63.240	2872.56	-104.64	423.85	910.61	1717013.92	14365378.10	39°33'30.3723"N	80°43'41.6561"W	1004.42	65.040	1.01	-0.73	-1.45	
3224.00	29.430	63.790	2954.76	-110.59	444.18	951.44	1717054.73	14365398.43	39°33'30.5721"N	80°43'41.1341"W	1050.01	64.974	0.91	0.86	0.59	
3319.00	29.880	63.330	3037.31	-116.70	465.11	993.52	1717096.80	14365419.35	39°33'30.7777"N	80°43'40.5960"W	1097.00	64.913	0.53	0.47	-0.48	
3414.00	29.260	61.510	3119.94	-123.70	486.81	1035.07	1717138.33	14365441.04	39°33'30.9909"N	80°43'40.0646"W	1143.84	64.812	1.15	-0.65	-1.92	
3508.00	28.930	63.150	3202.08	-130.61	508.04	1075.55	1717178.79	14365462.26	39°33'31.1994"N	80°43'39.5470"W	1189.50	64.716	0.92	-0.35	1.74	
3603.00	29.260	64.870	3285.09	-136.24	528.28	1117.07	1717220.30	14365482.49	39°33'31.3982"N	80°43'39.0161"W	1235.69	64.690	0.95	0.35	1.81	
3697.00	28.760	62.990	3367.30	-141.86	548.30	1158.02	1717261.23	14365502.51	39°33'31.5949"N	80°43'38.4926"W	1281.26	64.663	1.11	-0.53	-2.00	
3736.00	28.380	62.590	3401.55	-144.53	556.83	1174.60	1717277.81	14365511.03	39°33'31.6787"N	80°43'38.2805"W	1299.91	64.636	1.09	-0.97	-1.03	
3794.00	28.040	62.540	3452.66	-148.56	569.46	1198.94	1717302.13	14365523.66	39°33'31.8028"N	80°43'37.9693"W	1327.30	64.594	0.59	-0.59	-0.09	APS EM <8-3/4"> (3736')(3794'-7103')
3889.00	29.910	65.430	3535.77	-154.16	589.61	1240.30	1717343.48	14365543.80	39°33'32.0007"N	80°43'37.4405"W	1373.31	64.575	2.46	1.97	3.04	
3984.00	32.180	68.590	3617.17	-157.54	608.70	1285.40	1717388.56	14365562.88	39°33'32.1880"N	80°43'36.8639"W	1422.24	64.660	2.94	2.39	3.33	
4077.00	32.550	67.520	3695.72	-160.12	627.30	1331.57	1717434.72	14365581.48	39°33'32.3705"N	80°43'36.2737"W	1471.94	64.775	0.73	0.40	-1.15	
4172.00	32.870	65.380	3775.66	-164.21	647.82	1378.63	1717481.75	14365601.98	39°33'32.5718"N	80°43'35.8721"W	1523.24	64.831	1.26	0.34	-2.25	
4267.00	33.380	66.900	3855.22	-168.63	668.81	1426.10	1717529.21	14365622.97	39°33'32.7779"N	80°43'35.0651"W	1575.14	64.874	1.03	0.54	1.60	
4361.00	33.680	67.430	3933.58	-172.12	688.96	1473.95	1717577.04	14365643.11	39°33'32.9756"N	80°43'34.4534"W	1627.02	64.948	0.45	0.32	0.56	
4455.00	33.520	64.840	4011.88	-176.54	710.00	1521.52	1717624.59	14365664.14	39°33'33.1821"N	80°43'33.8453"W	1679.02	64.984	1.53	-0.17	-2.76	
4550.00	32.030	65.730	4091.75	-181.69	731.51	1568.23	1717671.28	14365685.64	39°33'33.3932"N	80°43'33.2481"W	1730.45	64.993	1.65	-1.57	0.94	
4645.00	30.350	68.550	4173.02	-185.05	750.64	1613.54	1717716.57	14365704.76	39°33'33.5810"N	80°43'32.6689"W	1779.60	65.051	2.34	-1.77	2.97	
4739.00	29.650	71.730	4254.43	-185.78	766.62	1657.72	1717760.74	14365720.73	39°33'33.7375"N	80°43'32.1041"W	1826.40	65.182	1.85	-0.74	3.38	
4834.00	29.510	73.110	4337.05	-184.64	780.78	1702.43	1717805.42	14365734.89	39°33'33.8762"N	80°43'31.5328"W	1872.93	65.362	0.73	-0.15	1.45	
4928.00	31.140	71.390	4418.19	-183.64	795.26	1747.62	1717850.60	14365749.37	39°33'34.0180"N	80°43'30.9553"W	1920.05	65.532	1.96	-1.73	-1.83	
5023.00	31.380	73.220	4499.40	-182.53	810.24	1794.58	1717897.54	14365764.34	39°33'34.1646"N	80°43'30.3551"W	1969.01	65.701	1.03	0.25	1.93	
5118.00	32.470	70.590	4580.03	-181.77	825.86	1842.31	1717945.26	14365779.95	39°33'34.3175"N	80°43'29.7450"W	2018.95	65.855	1.86	1.15	-2.77	
5213.00	32.820	70.790	4660.02	-182.06	842.81	1890.68	1717993.60	14365796.89	39°33'34.4835"N	80°43'29.1269"W	2070.02	65.974	0.39	0.37	0.21	
5307.00	31.650	69.800	4739.53	-182.69	859.70	1937.88	1718040.78	14365813.78	39°33'34.6491"N	80°43'28.5236"W	2120.02	66.076	1.37	-1.24	-1.05	
5402.00	30.500	67.100	4820.90	-184.87	877.69	1983.48	1718086.37	14365831.77	39°33'34.8255"N	80°43'27.9406"W	2169.00	66.131	1.90	-1.21	-2.84	



Actual Wellpath Report

Eckleberry Unit 2H AWP Proj: 25334'
Page 4 of 13



REFERENCE WELLPATH IDENTIFICATION				
Operator	ANTERO RESOURCES CORPORATION		Well	Eckleberry Unit 2H
Field	Wetzel		API	47-103-03493-0000
Facility	Furbee Pad		Wellbore	Eckleberry Unit 2H AWB
Slot	Slot A			

WELLPATH DATA (279 stations) † = interpolated, ‡ = extrapolated station																
MD [ft]	Inclination [°]	Azimuth [°]	TVD [ft]	Vert Sect [ft]	North [ft]	East [ft]	Grid East [US ft]	Grid North [US ft]	Latitude	Longitude	Closure Dist [ft]	Closure Dir [°]	DLS [°/100ft]	Build Rate [°/100ft]	Turn Rate [°/100ft]	Comments
5497.00	30.960	64.950	4902.57	-189.10	897.42	2027.83	1718130.70	14365851.49	39°33'35.0191"N	80°43'27.3736"W	2217.53	66.128	1.25	0.48	-2.26	
5591.00	32.440	63.270	4982.54	-195.06	919.00	2072.26	1718175.11	14365873.06	39°33'35.2310"N	80°43'26.8056"W	2266.89	66.084	1.83	1.57	-1.79	
5686.00	31.630	61.880	5063.08	-202.45	942.20	2116.98	1718219.82	14365896.25	39°33'35.4590"N	80°43'26.2336"W	2317.19	66.008	1.15	-0.85	-1.46	
5780.00	30.410	59.230	5143.64	-211.23	965.99	2159.17	1718261.98	14365920.03	39°33'35.6928"N	80°43'25.6941"W	2365.41	65.897	1.95	-1.30	-2.82	
5875.00	30.130	59.130	5225.68	-221.06	990.53	2200.29	1718303.09	14365944.56	39°33'35.9341"N	80°43'25.1680"W	2412.97	65.764	0.30	-0.29	-0.11	
5969.00	29.370	62.240	5307.30	-229.44	1013.37	2240.94	1718343.73	14365967.39	39°33'36.1586"N	80°43'24.6481"W	2459.42	65.667	1.83	-0.81	3.31	
6064.00	29.330	66.340	5390.11	-234.89	1033.56	2282.87	1718385.64	14365987.57	39°33'36.3569"N	80°43'24.1120"W	2505.95	65.642	2.12	-0.04	4.32	
6158.00	31.230	68.630	5471.29	-237.79	1051.68	2326.66	1718429.41	14366005.69	39°33'36.5346"N	80°43'23.5522"W	2553.31	65.676	2.36	2.02	2.44	
6253.00	32.810	66.460	5551.83	-240.86	1070.94	2373.20	1718475.93	14366024.93	39°33'36.7235"N	80°43'22.9573"W	2603.64	65.712	2.06	1.66	-2.28	
6347.00	31.190	64.320	5631.55	-245.72	1091.66	2418.48	1718521.20	14366045.65	39°33'36.9269"N	80°43'22.3783"W	2653.45	65.706	2.10	-1.72	-2.28	
6442.00	29.930	63.350	5713.35	-251.76	1112.95	2461.84	1718564.53	14366066.93	39°33'37.1360"N	80°43'21.8239"W	2701.72	65.673	1.42	-1.33	-1.02	
6536.00	29.860	63.570	5794.85	-257.92	1133.88	2503.75	1718606.43	14366087.85	39°33'37.3417"N	80°43'21.2879"W	2748.54	65.635	0.14	-0.07	0.23	
6630.00	30.950	66.830	5875.92	-262.72	1153.81	2546.93	1718649.59	14366107.77	39°33'37.5373"N	80°43'20.7358"W	2796.09	65.629	2.10	1.16	3.47	
6725.00	30.500	67.530	5957.59	-265.97	1172.64	2591.67	1718694.31	14366126.59	39°33'37.7220"N	80°43'20.1639"W	2844.61	65.655	0.61	-0.47	0.74	
6819.00	28.010	64.160	6039.60	-270.06	1191.38	2633.59	1718736.21	14366145.33	39°33'37.9059"N	80°43'19.6280"W	2890.53	65.659	3.18	-2.65	-3.59	
6914.00	27.470	62.330	6123.68	-276.04	1211.28	2673.07	1718775.68	14366165.22	39°33'38.1014"N	80°43'19.1231"W	2934.70	65.623	1.06	-0.57	-1.93	
7008.00	27.850	66.470	6206.95	-281.06	1230.11	2712.40	1718815.00	14366184.05	39°33'38.2864"N	80°43'18.6201"W	2978.31	65.605	2.08	0.40	4.40	
7103.00	29.800	65.910	6290.17	-284.92	1248.61	2754.30	1718856.88	14366202.54	39°33'38.4679"N	80°43'18.0844"W	3024.11	65.614	2.07	2.05	-0.59	
7150.00	30.170	66.540	6330.88	-286.88	1258.08	2775.80	1718878.37	14366212.00	39°33'38.5608"N	80°43'17.8096"W	3047.59	65.619	1.03	0.79	1.34	BH AT Curve <8-1/2"> (7103')(7150'-25309')
7215.00	30.690	67.280	6386.93	-289.24	1270.99	2806.08	1718908.64	14366224.90	39°33'38.6875"N	80°43'17.4224"W	3080.51	65.632	0.99	0.80	1.14	
7310.00	31.070	81.060	6468.56	-286.54	1284.18	2852.72	1718955.26	14366238.09	39°33'38.8164"N	80°43'16.8264"W	3128.44	65.765	7.44	0.40	14.51	
7404.00	31.370	98.900	6549.12	-270.84	1284.16	2900.96	1719003.48	14366238.07	39°33'38.8148"N	80°43'16.2105"W	3172.48	66.123	9.81	0.32	18.98	
7498.00	34.430	113.070	6628.16	-241.55	1269.94	2949.66	1719052.17	14366223.86	39°33'38.6727"N	80°43'15.5892"W	3211.43	66.706	8.79	3.26	15.07	
7590.00†	38.074	120.431	6702.37	-202.56	1245.36	2998.09	1719100.58	14366199.29	39°33'38.4283"N	80°43'14.9719"W	3246.46	67.443	6.16	3.96	8.00	Sycamore: 7590' MD
7593.00	38.200	120.650	6704.73	-201.15	1244.42	2999.69	1719102.17	14366198.34	39°33'38.4189"N	80°43'14.9516"W	3247.57	67.469	6.16	4.20	7.31	
7688.00	42.390	125.150	6777.19	-152.79	1210.98	3051.18	1719153.64	14366164.92	39°33'38.0869"N	80°43'14.2955"W	3282.71	68.352	5.37	4.41	4.74	
7767.00†	46.852	132.585	6833.44	-105.81	1176.11	3094.22	1719196.67	14366130.06	39°33'37.7409"N	80°43'13.7473"W	3310.20	69.188	8.69	5.65	9.41	Middlesex: 7767' MD
7782.00	47.750	133.870	6843.62	-96.06	1168.56	3102.25	1719204.69	14366122.52	39°33'37.6661"N	80°43'13.6451"W	3315.04	69.360	8.69	5.99	8.57	
7877.00	53.160	143.670	6904.17	-28.34	1113.45	3150.23	1719252.65	14366067.43	39°33'37.1199"N	80°43'13.0347"W	3341.21	70.534	9.77	5.69	10.32	
7927.00†	57.238	147.164	6932.70	11.20	1079.64	3173.49	1719275.91	14366033.63	39°33'36.7851"N	80°43'12.7390"W	3352.12	71.211	9.97	8.16	6.99	Burkett: 7927' MD



Actual Wellpath Report

Eckleberry Unit 2H AWP Proj: 25334'

Page 5 of 13



REFERENCE WELLPATH IDENTIFICATION				
Operator	ANTERO RESOURCES CORPORATION		Well	Eckleberry Unit 2H
Field	Wetzel		API	47-103-03493-0000
Facility	Furbee Pad		Wellbore	Eckleberry Unit 2H AWB
Slot	Slot A			

WELLPATH DATA (279 stations) † = interpolated, ‡ = extrapolated station																	
MD [ft]	Inclination [°]	Azimuth [°]	TVD [ft]	Vert Sect [ft]	North [ft]	East [ft]	Grid East [US ft]	Grid North [US ft]	Latitude	Longitude	Closure Dist [ft]	Closure Dir [°]	DLS [°/100ft]	Build Rate [°/100ft]	Turn Rate [°/100ft]	Comments	
7971.00	60.900	149.980	6955.32	48.04	1047.44	3193.15	1719295.56	14366001.44	39°33'36.4662"N	80°43'12.4893"W	3360.56	71.839	9.97	8.32	6.40		
7987.00†	62.040	150.555	6962.96	61.85	1035.23	3200.12	1719302.53	14365989.24	39°33'36.3453"N	80°43'12.4008"W	3363.40	72.074	7.79	7.12	3.59	Tully: 7987' MD	
8066.00	67.700	153.230	6996.50	132.44	972.16	3233.77	1719336.16	14365926.19	39°33'35.7210"N	80°43'11.9737"W	3376.74	73.268	7.79	7.16	3.39		
8100.00†	70.227	155.069	7008.70	163.94	943.60	3247.60	1719349.98	14365897.65	39°33'35.4383"N	80°43'11.7983"W	3381.90	73.799	8.99	7.43	5.41	Hamilton: 8100' MD	
8160.00	74.730	158.180	7026.77	220.97	891.10	3270.27	1719372.65	14365845.16	39°33'34.9187"N	80°43'11.5109"W	3389.50	74.758	8.99	7.50	5.18		
8237.00†	77.717	161.090	7045.11	295.71	821.00	3296.28	1719398.65	14365775.09	39°33'34.2251"N	80°43'11.1816"W	3396.98	76.014	5.34	3.88	3.78	Marcellus POE: 8237' MD	
8255.00	78.420	161.760	7048.83	313.32	804.30	3301.89	1719404.25	14365758.41	39°33'34.0599"N	80°43'11.1106"W	3398.44	76.310	5.34	3.91	3.72		
8349.00	83.950	161.810	7063.23	406.17	716.10	3330.91	1719433.27	14365670.24	39°33'33.1873"N	80°43'10.7436"W	3407.02	77.867	5.88	5.88	0.05		
8444.00	89.630	161.700	7068.54	500.97	626.06	3360.60	1719462.94	14365580.23	39°33'32.2965"N	80°43'10.3682"W	3418.42	79.447	5.98	5.98	-0.12		
8538.00	89.420	161.640	7069.32	594.96	536.83	3390.16	1719492.49	14365491.04	39°33'31.4137"N	80°43'9.9943"W	3432.40	81.002	0.23	-0.22	-0.06		
8633.00	89.200	161.440	7070.47	689.95	446.72	3420.24	1719522.55	14365400.97	39°33'30.5222"N	80°43'9.6139"W	3449.29	82.559	0.31	-0.23	-0.21		
8728.00	89.050	161.290	7071.92	784.94	356.72	3450.59	1719552.90	14365310.99	39°33'29.6317"N	80°43'9.2299"W	3468.98	84.098	0.22	-0.16	-0.16		
8822.00	89.260	161.360	7073.30	878.93	267.67	3480.69	1719582.98	14365221.99	39°33'28.7508"N	80°43'8.8492"W	3490.96	85.602	0.24	0.22	0.07		
8917.00	88.550	160.740	7075.12	973.91	177.84	3511.53	1719613.81	14365132.19	39°33'27.8620"N	80°43'8.4590"W	3516.03	87.101	0.99	-0.75	-0.65		
9011.00	89.420	160.810	7076.78	1067.89	89.10	3542.48	1719644.75	14365043.48	39°33'26.9840"N	80°43'8.0674"W	3543.60	88.559	0.93	0.93	0.07		
9106.00	90.000	161.900	7077.27	1162.89	-0.91	3572.85	1719675.10	14364953.51	39°33'26.0934"N	80°43'7.6833"W	3572.85	90.015	1.30	0.61	1.15		
9200.00	89.880	161.640	7077.36	1256.88	-90.20	3602.25	1719704.50	14364864.26	39°33'25.2101"N	80°43'7.3114"W	3603.38	91.434	0.30	-0.13	-0.28		
9295.00	89.850	160.910	7077.59	1351.88	-180.17	3632.75	1719734.98	14364774.33	39°33'24.3200"N	80°43'6.9256"W	3637.22	92.839	0.77	-0.03	-0.77		
9389.00	89.660	160.800	7077.99	1445.88	-268.97	3663.58	1719765.80	14364685.56	39°33'23.4414"N	80°43'6.5356"W	3673.44	94.199	0.23	-0.20	-0.12		
9484.00	90.800	163.330	7077.61	1540.85	-359.34	3692.83	1719795.04	14364595.22	39°33'22.5473"N	80°43'6.1658"W	3710.27	95.558	2.92	1.20	2.66		
9579.00	89.450	158.840	7077.40	1635.83	-449.18	3723.62	1719825.81	14364505.41	39°33'21.6584"N	80°43'5.7763"W	3750.61	96.878	4.94	-1.42	-4.73		
9673.00	90.250	162.970	7077.65	1729.80	-537.99	3754.36	1719856.55	14364416.64	39°33'20.7798"N	80°43'5.3874"W	3792.71	98.155	4.48	0.85	4.39		
9768.00	91.020	160.440	7076.59	1824.78	-628.18	3784.18	1719886.35	14364326.49	39°33'19.8875"N	80°43'5.0103"W	3835.96	99.425	2.78	0.81	-2.66		
9862.00	90.120	163.110	7075.66	1918.76	-717.45	3813.57	1719915.73	14364237.26	39°33'19.0043"N	80°43'4.6386"W	3880.47	100.655	3.00	-0.96	2.84		
9957.00	88.860	159.970	7076.50	2013.74	-807.54	3843.65	1719945.80	14364147.20	39°33'18.1130"N	80°43'4.2582"W	3927.56	101.865	3.56	-1.33	-3.31		
10051.00	89.480	162.190	7077.87	2107.72	-896.45	3874.12	1719976.26	14364058.32	39°33'17.2333"N	80°43'3.8728"W	3976.49	103.029	2.45	0.66	2.36		
10145.00	89.110	159.120	7079.02	2201.70	-985.13	3905.25	1720007.38	14363969.68	39°33'16.3560"N	80°43'3.4789"W	4027.59	104.158	3.29	-0.39	-3.27		
10240.00	88.860	162.440	7080.71	2296.67	-1074.80	3936.52	1720038.63	14363880.04	39°33'15.4687"N	80°43'3.0833"W	4080.61	105.271	3.50	-0.26	3.49		
10334.00	92.280	161.130	7079.77	2390.64	-1164.07	3965.89	1720067.99	14363790.81	39°33'14.5855"N	80°43'2.7119"W	4133.20	106.358	3.90	3.64	-1.39		
10428.00	88.950	157.030	7078.76	2484.55	-1251.84	3999.44	1720101.53	14363703.07	39°33'13.7170"N	80°43'2.2870"W	4190.78	107.380	5.62	-3.54	-4.36		



Actual Wellpath Report

Eckleberry Unit 2H AWP Proj: 25334'
Page 6 of 13



REFERENCE WELLPATH IDENTIFICATION			
Operator	ANTERO RESOURCES CORPORATION	Well	Eckleberry Unit 2H
Field	Wetzel	API	47-103-03493-0000
Facility	Furbee Pad	Wellbore	Eckleberry Unit 2H AWB
Slot	Slot A		

WELLPATH DATA (279 stations)																
MD [ft]	Inclination [°]	Azimuth [°]	TVD [ft]	Vert Sect [ft]	North [ft]	East [ft]	Grid East [US ft]	Grid North [US ft]	Latitude	Longitude	Closure Dist [ft]	Closure Dir [°]	DLS ["/100ft]	Build Rate ["/100ft]	Turn Rate ["/100ft]	Comments
10523.00	88.150	161.930	7081.17	2579.46	-1340.76	4032.72	1720134.80	14363614.19	39°33'12.8372"N	80°43'1.8657"W	4249.76	108.390	5.22	-0.84	5.16	
10618.00	89.780	160.750	7082.88	2674.44	-1430.74	4063.11	1720165.18	14363524.24	39°33'11.9469"N	80°43'1.4814"W	4307.66	109.399	2.12	1.72	-1.24	
10712.00	89.780	160.730	7083.24	2768.43	-1519.48	4094.12	1720196.17	14363435.54	39°33'11.0690"N	80°43'1.0891"W	4366.99	110.362	0.02	0.00	-0.02	
10807.00	91.630	162.530	7082.08	2863.41	-1609.63	4124.05	1720226.09	14363345.43	39°33'10.1771"N	80°43'0.7106"W	4427.04	111.321	2.72	1.95	1.89	
10901.00	88.710	159.440	7081.80	2957.39	-1698.48	4154.67	1720256.70	14363256.62	39°33'9.2980"N	80°43'0.3232"W	4488.45	112.235	4.52	-3.11	-3.29	
10995.00	91.170	161.490	7081.90	3051.37	-1787.05	4186.10	1720288.12	14363168.07	39°33'8.4216"N	80°42'59.9256"W	4551.59	113.118	3.41	2.62	2.18	
11089.00	89.540	162.120	7081.31	3145.36	-1876.35	4215.45	1720317.46	14363078.81	39°33'7.5382"N	80°42'59.5545"W	4614.19	113.994	1.86	-1.73	0.67	
11184.00	89.260	159.900	7082.31	3240.35	-1966.17	4246.36	1720348.35	14362989.03	39°33'6.6495"N	80°42'59.1635"W	4679.47	114.845	2.36	-0.29	-2.34	
11278.00	89.970	161.310	7082.94	3334.34	-2054.83	4277.58	1720379.55	14362900.41	39°33'5.7723"N	80°42'58.7686"W	4745.52	115.658	1.68	0.76	1.50	
11373.00	89.170	160.380	7083.65	3429.34	-2144.56	4308.75	1720410.71	14362810.70	39°33'4.8844"N	80°42'58.3743"W	4812.95	116.461	1.29	-0.84	-0.98	
11467.00	89.020	160.720	7085.14	3523.32	-2233.19	4340.04	1720442.00	14362722.12	39°33'4.0076"N	80°42'57.9783"W	4880.89	117.228	0.40	-0.16	0.36	
11562.00	90.340	161.070	7085.67	3618.32	-2322.95	4371.13	1720473.08	14362632.39	39°33'3.1195"N	80°42'57.5850"W	4950.04	117.988	1.44	1.39	0.37	
11656.00	90.680	161.860	7084.83	3712.31	-2412.07	4401.01	1720502.94	14362543.30	39°33'2.2377"N	80°42'57.2072"W	5018.67	118.726	0.91	0.36	0.84	
11751.00	89.260	160.700	7084.88	3807.31	-2502.04	4431.50	1720533.42	14362453.37	39°33'1.3476"N	80°42'56.8216"W	5089.05	119.449	1.93	-1.49	-1.22	
11845.00	89.200	160.490	7086.14	3901.29	-2590.69	4462.73	1720564.64	14362364.75	39°33'0.4704"N	80°42'56.4265"W	5160.20	120.136	0.23	-0.06	-0.22	
11940.00	90.490	162.440	7086.40	3996.28	-2680.76	4492.93	1720594.82	14362274.72	39°32'59.5794"N	80°42'56.0446"W	5231.91	120.823	2.46	1.36	2.05	
12034.00	89.350	161.290	7086.53	4090.27	-2770.09	4522.18	1720624.07	14362185.43	39°32'58.6956"N	80°42'55.6748"W	5303.16	121.490	1.72	-1.21	-1.22	
12129.00	89.570	160.690	7087.43	4185.27	-2859.90	4553.13	1720655.00	14362095.65	39°32'57.8070"N	80°42'55.2834"W	5376.80	122.134	0.67	0.23	-0.63	
12223.00	89.170	160.720	7088.46	4279.26	-2948.62	4584.19	1720686.04	14362006.97	39°32'56.9292"N	80°42'54.8905"W	5450.61	122.750	0.43	-0.43	0.03	
12318.00	90.520	161.440	7088.72	4374.26	-3038.48	4614.99	1720716.83	14361917.14	39°32'56.0401"N	80°42'54.5009"W	5525.44	123.361	1.61	1.42	0.76	
12413.00	88.340	161.110	7089.66	4469.24	-3128.44	4645.48	1720747.32	14361827.21	39°32'55.1500"N	80°42'54.1153"W	5600.68	123.958	2.32	-2.29	-0.35	
12507.00	90.650	159.700	7090.49	4563.23	-3216.99	4677.00	1720778.82	14361738.71	39°32'54.2739"N	80°42'53.7165"W	5676.56	124.521	2.88	2.46	-1.50	
12602.00	88.800	161.760	7090.95	4658.21	-3306.65	4708.35	1720810.16	14361649.07	39°32'53.3868"N	80°42'53.3199"W	5753.48	125.080	2.91	-1.95	2.17	
12697.00	89.020	160.920	7092.75	4753.20	-3396.64	4738.74	1720840.54	14361559.12	39°32'52.4964"N	80°42'52.9356"W	5830.34	125.632	0.91	0.23	-0.88	
12791.00	89.630	161.410	7093.86	4847.19	-3485.60	4769.09	1720870.87	14361470.19	39°32'51.6163"N	80°42'52.5518"W	5907.08	126.162	0.83	0.65	0.52	
12885.00	90.120	162.030	7094.07	4941.18	-3574.86	4798.57	1720900.34	14361380.97	39°32'50.7332"N	80°42'52.1791"W	5983.80	126.686	0.84	0.52	0.66	
12980.00	90.400	160.170	7093.64	5036.17	-3664.73	4829.34	1720931.10	14361291.14	39°32'49.8440"N	80°42'51.7899"W	6062.41	127.193	1.98	0.29	-1.96	
13075.00	89.660	162.430	7093.59	5131.17	-3754.71	4859.80	1720961.55	14361201.19	39°32'48.9538"N	80°42'51.4048"W	6141.29	127.690	2.50	-0.78	2.38	
13169.00	89.050	160.340	7094.64	5225.15	-3843.78	4889.80	1720991.54	14361112.16	39°32'48.0725"N	80°42'51.0254"W	6219.71	128.170	2.32	-0.65	-2.22	
13263.00	91.110	162.100	7094.51	5319.14	-3932.77	4920.06	1721021.78	14361023.21	39°32'47.1921"N	80°42'50.6428"W	6298.70	128.637	2.88	2.19	1.87	



Actual Wellpath Report

Eckleberry Unit 2H AWP Proj: 25334'
Page 7 of 13



REFERENCE WELLPATH IDENTIFICATION			
Operator	ANTERO RESOURCES CORPORATION	Well	Eckleberry Unit 2H
Field	Wetzel	API	47-103-03493-0000
Facility	Furbee Pad	Wellbore	Eckleberry Unit 2H AWB
Slot	Slot A		

WELLPATH DATA (279 stations)																
MD [ft]	Inclination [°]	Azimuth [°]	TVD [ft]	Vert Sect [ft]	North [ft]	East [ft]	Grid East [US ft]	Grid North [US ft]	Latitude	Longitude	Closure Dist [ft]	Closure Dir [°]	DLS ["/100ft]	Build Rate ["/100ft]	Turn Rate ["/100ft]	Comments
13358.00	90.150	161.860	7093.47	5414.12	-4023.10	4949.44	1721051.16	14360932.91	39°32'46.2984"N	80°42'50.2713"W	6378.27	129.106	1.04	-1.01	-0.25	
13452.00	90.060	161.340	7093.30	5508.12	-4112.30	4979.11	1721080.82	14360843.75	39°32'45.4159"N	80°42'49.8962"W	6457.75	129.554	0.56	-0.10	-0.55	
13547.00	90.000	161.880	7093.25	5603.11	-4202.44	5009.09	1721110.77	14360753.64	39°32'44.5240"N	80°42'49.5173"W	6538.46	129.995	0.57	-0.06	0.57	
13641.00	90.400	161.830	7092.92	5697.10	-4291.77	5038.36	1721140.04	14360664.35	39°32'43.6403"N	80°42'49.1472"W	6618.49	130.425	0.43	0.43	-0.05	
13735.00	89.290	160.360	7093.17	5791.10	-4380.89	5068.81	1721170.48	14360575.46	39°32'42.7605"N	80°42'48.7621"W	6699.50	130.835	1.96	-1.18	-1.56	
13830.00	90.030	160.940	7093.74	5886.09	-4470.33	5100.29	1721201.94	14360485.86	39°32'41.8736"N	80°42'48.3639"W	6782.09	131.234	0.99	0.78	0.61	
13924.00	90.000	160.690	7093.71	5980.09	-4559.11	5131.18	1721232.82	14360397.12	39°32'40.9952"N	80°42'47.9732"W	6864.00	131.621	0.27	-0.03	-0.27	
14018.00	90.090	161.990	7093.64	6074.09	-4648.16	5161.25	1721262.88	14360308.10	39°32'40.1141"N	80°42'47.5930"W	6945.79	132.006	1.39	0.10	1.38	
14113.00	90.430	162.190	7093.21	6169.07	-4738.56	5190.47	1721292.09	14360217.74	39°32'39.2198"N	80°42'47.2237"W	7028.15	132.394	0.42	0.36	0.21	
14208.00	90.400	162.130	7092.52	6264.05	-4828.99	5219.57	1721321.18	14360127.34	39°32'38.3252"N	80°42'46.8559"W	7110.77	132.774	0.07	-0.03	-0.06	
14303.00	89.880	162.260	7092.29	6359.03	-4919.44	5248.62	1721350.22	14360036.93	39°32'37.4303"N	80°42'46.4888"W	7193.67	133.146	0.56	-0.55	0.14	
14397.00	89.420	161.380	7092.86	6453.02	-5008.74	5277.95	1721379.53	14359947.66	39°32'36.5468"N	80°42'46.1181"W	7276.28	133.501	1.06	-0.49	-0.94	
14491.00	89.600	160.630	7093.67	6547.01	-5097.62	5308.54	1721410.11	14359858.82	39°32'35.6674"N	80°42'45.7312"W	7359.78	133.839	0.82	0.19	-0.80	
14586.00	89.570	161.670	7094.35	6642.01	-5187.52	5339.24	1721440.79	14359768.95	39°32'34.7779"N	80°42'45.3431"W	7444.31	134.174	1.10	-0.03	1.09	
14681.00	89.720	160.450	7094.94	6737.00	-5277.37	5370.07	1721471.62	14359679.13	39°32'33.8889"N	80°42'44.9531"W	7529.16	134.501	1.29	0.16	-1.28	
14775.00	90.650	161.090	7094.64	6831.00	-5366.13	5401.03	1721502.56	14359590.42	39°32'33.0108"N	80°42'44.5616"W	7613.57	134.814	1.20	0.99	0.68	
14870.00	90.280	161.170	7093.87	6926.00	-5456.02	5431.75	1721533.27	14359500.56	39°32'32.1214"N	80°42'44.1731"W	7698.83	135.128	0.40	-0.39	0.08	
14965.00	89.850	161.030	7093.76	7021.00	-5545.89	5462.52	1721564.03	14359410.72	39°32'31.2321"N	80°42'43.7840"W	7784.35	135.434	0.48	-0.45	-0.15	
15059.00	90.120	160.320	7093.78	7115.00	-5634.60	5493.63	1721595.13	14359322.05	39°32'30.3545"N	80°42'43.3905"W	7869.48	135.726	0.81	0.29	-0.76	
15153.00	90.830	161.100	7093.00	7208.99	-5723.32	5524.68	1721626.17	14359233.37	39°32'29.4767"N	80°42'42.9978"W	7954.78	136.012	1.12	0.76	0.83	
15248.00	90.280	161.550	7092.08	7303.98	-5813.31	5555.10	1721656.57	14359143.41	39°32'28.5863"N	80°42'42.6132"W	8040.75	136.301	0.75	-0.58	0.47	
15343.00	90.430	161.300	7091.50	7398.98	-5903.36	5585.36	1721686.82	14359053.40	39°32'27.6953"N	80°42'42.2306"W	8126.86	136.585	0.31	0.16	-0.26	
15438.00	90.090	161.720	7091.06	7493.97	-5993.45	5615.49	1721716.94	14358963.34	39°32'26.8039"N	80°42'41.8498"W	8213.11	136.865	0.57	-0.36	0.44	
15532.00	89.970	160.940	7091.02	7587.97	-6082.51	5645.58	1721747.02	14358874.32	39°32'25.9229"N	80°42'41.4693"W	8298.76	137.134	0.84	-0.13	-0.83	
15627.00	90.060	161.130	7090.99	7682.97	-6172.35	5676.45	1721777.88	14358784.51	39°32'25.0339"N	80°42'41.0789"W	8385.70	137.397	0.22	0.09	0.20	
15721.00	89.480	159.130	7091.37	7776.95	-6260.75	5708.40	1721809.81	14358696.15	39°32'24.1593"N	80°42'40.6748"W	8472.47	137.642	2.22	-0.62	-2.13	
15816.00	90.490	161.530	7091.39	7871.94	-6350.20	5740.38	1721841.78	14358606.73	39°32'23.2742"N	80°42'40.2703"W	8560.19	137.887	2.74	1.06	2.53	
15910.00	90.030	160.850	7090.97	7965.94	-6439.18	5770.68	1721872.07	14358517.79	39°32'22.3939"N	80°42'39.8871"W	8646.60	138.134	0.87	-0.49	-0.72	
16005.00	90.150	161.020	7090.82	8060.94	-6528.96	5801.71	1721903.09	14358428.04	39°32'21.5055"N	80°42'39.4947"W	8734.26	138.375	0.22	0.13	0.18	
16099.00	89.850	162.430	7090.82	8154.93	-6618.22	5831.19	1721932.55	14358338.82	39°32'20.8224"N	80°42'39.1221"W	8820.64	138.617	1.53	-0.32	1.50	



Actual Wellpath Report

Eckleberry Unit 2H AWP Proj: 25334'

Page 8 of 13



REFERENCE WELLPATH IDENTIFICATION

Operator	ANTERO RESOURCES CORPORATION	Well	Eckleberry Unit 2H
Field	Wetzel	API	47-103-03493-0000
Facility	Furbee Pad	Wellbore	Eckleberry Unit 2H AWB
Slot	Slot A		

WELLPATH DATA (279 stations)

MD (ft)	Inclination (°)	Azimuth (°)	TVD (ft)	Vert Sect (ft)	North (ft)	East (ft)	Grid East (US ft)	Grid North (US ft)	Latitude	Longitude	Closure Dist (ft)	Closure Dir (°)	DLS (°/100ft)	Build Rate (°/100ft)	Turn Rate (°/100ft)	Comments
16194.00	90.220	161.620	7090.76	8249.91	-6708.58	5860.51	1721961.86	14358248.49	39°32'19.7284"N	80°42'38.7517"W	8907.90	138.860	0.94	0.39	-0.85	
16289.00	90.180	161.050	7090.43	8344.91	-6798.59	5890.91	1721992.25	14358158.52	39°32'18.8379"N	80°42'38.3673"W	8995.75	139.091	0.60	-0.04	-0.60	
16383.00	89.720	160.630	7090.51	8438.91	-6887.38	5921.76	1722023.09	14358069.77	39°32'17.9594"N	80°42'37.9772"W	9083.13	139.311	0.66	-0.49	-0.45	
16477.00	89.940	160.520	7090.79	8532.91	-6976.03	5953.02	1722054.34	14357981.15	39°32'17.0822"N	80°42'37.5818"W	9170.79	139.524	0.26	0.23	-0.12	
16570.00	89.600	161.390	7091.16	8625.90	-7083.93	5983.37	1722084.67	14357893.28	39°32'16.2125"N	80°42'37.1981"W	9257.42	139.734	1.00	-0.37	0.94	
16666.00	89.540	160.890	7091.88	8721.90	-7154.78	6014.40	1722115.69	14357802.47	39°32'15.3137"N	80°42'36.8057"W	9346.86	139.949	0.52	-0.06	-0.52	
16761.00	89.450	161.490	7092.72	8816.90	-7244.70	6045.03	1722146.31	14357712.58	39°32'14.4240"N	80°42'36.4185"W	9435.47	140.158	0.64	-0.09	0.63	
16856.00	89.480	162.350	7093.61	8911.88	-7335.00	6074.51	1722175.78	14357622.32	39°32'13.5305"N	80°42'36.0459"W	9523.76	140.370	0.91	0.03	0.91	
16950.00	89.510	161.370	7094.44	9005.86	-7424.33	6103.78	1722205.03	14357533.03	39°32'12.6468"N	80°42'35.6761"W	9611.28	140.575	1.04	0.03	-1.04	
17045.00	90.800	162.780	7094.18	9100.84	-7514.71	6133.01	1722234.26	14357442.68	39°32'11.7526"N	80°42'35.3068"W	9699.73	140.781	2.01	1.36	1.48	
17140.00	89.600	160.510	7093.85	9195.83	-7604.87	6162.93	1722264.16	14357352.56	39°32'10.8605"N	80°42'34.9285"W	9788.55	140.979	2.70	-1.26	-2.39	
17234.00	88.740	160.880	7095.21	9289.82	-7693.57	6194.00	1722295.22	14357263.89	39°32'9.9829"N	80°42'34.5356"W	9877.08	141.163	1.00	-0.91	0.39	
17329.00	89.480	160.130	7096.68	9384.80	-7783.12	6225.70	1722326.91	14357174.38	39°32'9.0969"N	80°42'34.1347"W	9966.76	141.344	1.11	0.78	-0.79	
17424.00	89.780	160.510	7097.30	9479.79	-7872.57	6257.69	1722358.89	14357084.97	39°32'8.2118"N	80°42'33.7301"W	10056.64	141.520	0.51	0.32	0.40	
17518.00	89.660	160.290	7097.76	9573.78	-7961.12	6289.22	1722390.41	14356996.45	39°32'7.3356"N	80°42'33.3313"W	10145.63	141.692	0.27	-0.13	-0.23	
17612.00	89.080	160.390	7098.79	9667.77	-8049.63	6320.85	1722422.02	14356907.97	39°32'6.4598"N	80°42'32.9313"W	10234.73	141.860	0.63	-0.62	0.11	
17707.00	89.630	160.220	7099.86	9762.76	-8139.07	6352.86	1722454.02	14356818.57	39°32'5.5749"N	80°42'32.5264"W	10324.89	142.027	0.61	0.58	-0.18	
17802.00	89.260	160.170	7100.78	9857.74	-8228.45	6385.05	1722486.19	14356729.23	39°32'4.6905"N	80°42'32.1193"W	10415.19	142.190	0.39	-0.39	-0.05	
17896.00	89.880	160.340	7101.49	9951.73	-8316.92	6416.80	1722517.93	14356640.79	39°32'3.8151"N	80°42'31.7177"W	10504.59	142.349	0.68	0.66	0.18	
17991.00	90.310	160.560	7101.33	10046.73	-8406.44	6448.59	1722549.71	14356551.31	39°32'2.9293"N	80°42'31.3156"W	10594.93	142.508	0.51	0.45	0.23	
18085.00	89.450	162.060	7101.52	10140.72	-8495.48	6478.71	1722579.82	14356462.30	39°32'2.0484"N	80°42'30.9349"W	10683.95	142.671	1.84	-0.91	1.60	
18180.00	88.370	159.660	7103.33	10235.70	-8585.20	6509.85	1722610.95	14356372.61	39°32'1.1606"N	80°42'30.5412"W	10774.22	142.828	2.77	-1.14	-2.53	
18274.00	88.650	160.060	7105.78	10329.64	-8673.42	6542.21	1722643.29	14356284.43	39°32'0.2877"N	80°42'30.1319"W	10864.10	142.973	0.52	0.30	0.43	
18368.00	88.550	160.180	7108.07	10423.60	-8761.80	6574.16	1722675.23	14356196.09	39°31'59.4132"N	80°42'29.7277"W	10953.93	143.118	0.17	-0.11	0.13	
18463.00	88.890	161.570	7110.20	10518.58	-8851.53	6605.28	1722706.34	14356106.39	39°31'58.5254"N	80°42'29.3343"W	11044.42	143.269	1.51	0.36	1.48	
18557.00	89.110	161.440	7111.84	10612.56	-8940.66	6635.09	1722736.14	14356017.30	39°31'57.6435"N	80°42'28.9574"W	11133.73	143.420	0.27	0.23	-0.14	
18651.00	89.110	161.440	7113.30	10706.55	-9029.76	6665.01	1722766.04	14355928.23	39°31'56.7620"N	80°42'28.5793"W	11223.14	143.568	0.00	0.00	0.00	
18746.00	88.620	161.110	7115.18	10801.53	-9119.71	6695.50	1722796.52	14355838.31	39°31'55.8720"N	80°42'28.1939"W	11313.66	143.715	0.62	-0.52	-0.35	
18840.00	89.850	161.490	7116.43	10895.51	-9208.74	6725.63	1722826.64	14355749.32	39°31'54.9911"N	80°42'27.8130"W	11403.29	143.857	1.37	1.31	0.40	
18935.00	89.510	160.860	7116.96	10990.51	-9298.66	6756.29	1722857.29	14355659.44	39°31'54.1015"N	80°42'27.4255"W	11494.02	143.998	0.75	-0.36	-0.66	



Actual Wellpath Report

Eckleberry Unit 2H AWP Proj: 25334'
Page 9 of 13



REFERENCE WELLPATH IDENTIFICATION			
Operator	ANTERO RESOURCES CORPORATION	Well	Eckleberry Unit 2H
Field	Wetzel	API	47-103-03493-0000
Facility	Furbee Pad	Wellbore	Eckleberry Unit 2H AWB
Slot	Slot A		

WELLPATH DATA (279 stations)																
MD [ft]	Inclination [°]	Azimuth [°]	TVD [ft]	Vert Sect [ft]	North [ft]	East [ft]	Grid East [US ft]	Grid North [US ft]	Latitude	Longitude	Closure Dist [ft]	Closure Dir [°]	DLS [°/100ft]	Build Rate [°/100ft]	Turn Rate [°/100ft]	Comments
19029.00	89.940	161.690	7117.41	11084.51	-9387.68	6786.46	1722887.45	14355570.45	39°31'53.2207"N	80°42'27.0441"W	11583.81	144.136	0.99	0.46	0.88	
19124.00	89.820	161.380	7117.61	11179.50	-9477.79	6816.55	1722917.53	14355480.38	39°31'52.3291"N	80°42'26.6638"W	11674.50	144.276	0.35	-0.13	-0.33	
19218.00	89.850	161.810	7117.88	11273.50	-9566.98	6846.23	1722947.19	14355391.22	39°31'51.4467"N	80°42'26.2887"W	11764.27	144.412	0.46	0.03	0.46	
19313.00	89.820	161.730	7118.16	11368.49	-9657.21	6875.95	1722976.90	14355301.03	39°31'50.5539"N	80°42'25.9132"W	11854.97	144.549	0.09	-0.03	-0.08	
19407.00	89.850	161.610	7118.43	11462.48	-9746.44	6905.51	1723006.45	14355211.83	39°31'49.6711"N	80°42'25.5396"W	11944.84	144.682	0.13	0.03	-0.13	
19502.00	89.570	161.220	7118.91	11557.48	-9836.49	6935.79	1723036.72	14355121.82	39°31'48.7802"N	80°42'25.1570"W	12035.85	144.812	0.51	-0.29	-0.41	
19597.00	90.150	161.160	7119.14	11652.48	-9926.41	6966.42	1723067.33	14355031.93	39°31'47.8905"N	80°42'24.7698"W	12127.02	144.939	0.61	0.61	-0.06	
19691.00	89.380	161.610	7119.53	11746.48	-10015.49	6996.42	1723097.33	14354942.89	39°31'47.0091"N	80°42'24.3906"W	12217.20	145.063	0.95	-0.82	0.48	
19786.00	89.290	161.360	7120.63	11841.47	-10105.57	7026.59	1723127.48	14354852.85	39°31'46.1179"N	80°42'24.0093"W	12308.35	145.188	0.28	-0.09	-0.26	
19881.00	89.480	161.420	7121.65	11936.48	-10195.60	7056.91	1723157.78	14354762.85	39°31'45.2271"N	80°42'23.6262"W	12399.60	145.311	0.21	0.20	0.06	
19975.00	89.350	161.040	7122.61	12030.45	-10284.59	7087.15	1723188.02	14354673.89	39°31'44.3466"N	80°42'23.2439"W	12490.02	145.429	0.43	-0.14	-0.40	
20070.00	89.720	161.240	7123.38	12125.45	-10374.49	7117.86	1723218.71	14354584.03	39°31'43.4571"N	80°42'22.8558"W	12581.49	145.546	0.44	0.39	0.21	
20164.00	89.820	161.350	7123.76	12219.45	-10463.52	7148.00	1723248.85	14354495.03	39°31'42.5762"N	80°42'22.4748"W	12671.99	145.662	0.16	0.11	0.12	
20259.00	89.230	160.960	7124.54	12314.44	-10553.43	7178.69	1723279.52	14354405.17	39°31'41.6867"N	80°42'22.0869"W	12763.56	145.776	0.74	-0.62	-0.41	
20353.00	89.510	161.430	7125.58	12408.44	-10642.40	7208.99	1723309.81	14354316.22	39°31'40.8063"N	80°42'21.7040"W	12854.19	145.887	0.58	0.30	0.50	
20448.00	89.540	162.060	7126.37	12503.43	-10732.62	7238.74	1723339.55	14354226.04	39°31'39.9137"N	80°42'21.3280"W	12945.60	146.002	0.66	0.03	0.66	
20543.00	89.850	161.020	7126.87	12598.42	-10822.73	7268.82	1723369.62	14354135.97	39°31'39.0222"N	80°42'20.9478"W	13037.15	146.114	1.14	0.33	-1.09	
20637.00	89.570	161.420	7127.35	12692.42	-10911.72	7299.09	1723399.87	14354047.01	39°31'38.1417"N	80°42'20.5654"W	13127.92	146.221	0.52	-0.30	0.43	
20731.00	89.660	161.500	7127.98	12786.41	-11000.84	7328.97	1723429.75	14353957.93	39°31'37.2599"N	80°42'20.1877"W	13218.64	146.328	0.13	0.10	0.09	
20826.00	89.260	161.810	7128.87	12881.40	-11091.01	7358.87	1723459.63	14353867.80	39°31'36.3678"N	80°42'19.8099"W	13310.28	146.436	0.53	-0.42	0.33	
20920.00	89.480	161.680	7129.91	12975.39	-11180.27	7388.32	1723489.06	14353778.57	39°31'35.4846"N	80°42'19.4379"W	13400.96	146.542	0.27	0.23	-0.14	
21015.00	89.600	161.100	7130.67	13070.38	-11270.30	7418.63	1723519.37	14353688.57	39°31'34.5939"N	80°42'19.0548"W	13492.81	146.645	0.62	0.13	-0.61	
21109.00	89.260	161.610	7131.61	13164.38	-11359.37	7448.68	1723549.41	14353599.55	39°31'33.7127"N	80°42'18.6750"W	13583.74	146.746	0.65	-0.36	0.54	
21204.00	89.540	161.410	7132.60	13259.37	-11449.46	7478.81	1723579.52	14353509.49	39°31'32.8213"N	80°42'18.2943"W	13675.62	146.847	0.36	0.29	-0.21	
21299.00	89.380	161.460	7133.50	13354.36	-11539.51	7509.05	1723609.75	14353419.47	39°31'31.9303"N	80°42'17.9121"W	13767.58	146.947	0.18	-0.17	0.05	
21393.00	89.380	161.410	7134.51	13448.35	-11628.61	7538.98	1723639.67	14353330.41	39°31'31.0487"N	80°42'17.5339"W	13858.60	147.044	0.05	0.00	-0.05	
21488.00	89.480	161.640	7135.46	13543.34	-11718.71	7569.08	1723669.76	14353240.34	39°31'30.1573"N	80°42'17.1535"W	13950.60	147.142	0.26	0.11	0.24	
21582.00	89.540	161.560	7136.26	13637.34	-11807.90	7598.75	1723699.42	14353151.19	39°31'29.2748"N	80°42'16.7787"W	14041.64	147.237	0.11	0.06	-0.09	
21677.00	89.750	161.500	7136.85	13732.33	-11898.01	7628.85	1723729.50	14353061.12	39°31'28.3833"N	80°42'16.3984"W	14133.72	147.333	0.23	0.22	-0.06	
21771.00	89.480	161.110	7137.48	13826.33	-11987.05	7658.98	1723759.62	14352972.11	39°31'27.5023"N	80°42'16.0176"W	14224.95	147.424	0.50	-0.29	-0.41	



Actual Wellpath Report

Eckleberry Unit 2H AWP Proj: 25334'
Page 10 of 13



REFERENCE WELLPATH IDENTIFICATION			
Operator	ANTERO RESOURCES CORPORATION	Well	Eckleberry Unit 2H
Field	Wetzel	API	47-103-03493-0000
Facility	Furbee Pad	Wellbore	Eckleberry Unit 2H AWB
Slot	Slot A		

WELLPATH DATA (279 stations)																
MD [ft]	Inclination [°]	Azimuth [°]	TVD [ft]	Vert Sect [ft]	North [ft]	East [ft]	Grid East [US ft]	Grid North [US ft]	Latitude	Longitude	Closure Dist [ft]	Closure Dir [°]	DLS ["/100ft]	Build Rate ["/100ft]	Turn Rate ["/100ft]	Comments
21866.00	89.630	160.260	7138.22	13921.32	-12076.69	7690.40	1723791.03	14352882.50	39°31'26.6153"N	80°42'15.6204"W	14317.43	147.511	0.91	0.16	-0.89	
21960.00	90.180	160.290	7138.38	14015.31	-12165.18	7722.12	1723822.74	14352794.05	39°31'25.7397"N	80°42'15.2193"W	14409.12	147.594	0.59	0.59	0.03	
22055.00	89.880	160.500	7138.33	14110.31	-12254.67	7754.00	1723854.60	14352704.59	39°31'24.8542"N	80°42'14.8162"W	14501.77	147.677	0.39	-0.32	0.22	
22150.00	89.850	160.570	7138.55	14205.30	-12344.24	7785.66	1723886.25	14352615.06	39°31'23.9680"N	80°42'14.4160"W	14594.41	147.760	0.08	-0.03	0.07	
22244.00	90.580	161.120	7138.20	14299.30	-12433.04	7816.50	1723917.08	14352526.30	39°31'23.0894"N	80°42'14.0262"W	14685.98	147.843	0.97	0.78	0.59	
22339.00	89.820	159.750	7137.87	14394.29	-12522.55	7848.31	1723948.88	14352436.83	39°31'22.2037"N	80°42'13.6240"W	14778.71	147.923	1.65	-0.80	-1.44	
22433.00	90.030	160.330	7137.99	14488.28	-12610.90	7880.40	1723980.95	14352348.51	39°31'21.3294"N	80°42'13.2182"W	14870.63	147.999	0.66	0.22	0.62	
22528.00	90.000	160.570	7137.96	14583.27	-12700.42	7912.19	1724012.73	14352259.02	39°31'20.4436"N	80°42'12.8163"W	14963.41	148.078	0.25	-0.03	0.25	
22623.00	89.880	160.040	7138.06	14678.27	-12789.87	7944.21	1724044.73	14352169.61	39°31'19.5586"N	80°42'12.4115"W	15056.26	148.154	0.57	-0.13	-0.56	
22717.00	90.000	160.200	7138.16	14772.25	-12878.26	7976.17	1724076.69	14352081.25	39°31'18.6839"N	80°42'12.0074"W	15148.23	148.228	0.21	0.13	0.17	
22812.00	89.600	160.160	7138.49	14867.24	-12967.63	8008.38	1724108.88	14351991.91	39°31'17.7996"N	80°42'11.6001"W	15241.19	148.302	0.42	-0.42	-0.04	
22907.00	89.850	160.280	7138.95	14962.23	-13057.03	8040.53	1724141.02	14351902.55	39°31'16.9150"N	80°42'11.1936"W	15334.15	148.375	0.29	0.26	0.13	
23001.00	89.970	160.600	7139.10	15056.23	-13145.60	8072.00	1724172.48	14351814.01	39°31'16.0386"N	80°42'10.7957"W	15426.08	148.448	0.36	0.13	0.34	
23095.00	89.910	160.680	7139.20	15150.23	-13234.29	8103.16	1724203.63	14351725.36	39°31'15.1611"N	80°42'10.4019"W	15517.98	148.521	0.11	-0.06	0.09	
23190.00	90.030	160.590	7139.25	15245.22	-13323.91	8134.66	1724235.12	14351635.78	39°31'14.2742"N	80°42'10.0037"W	15610.87	148.595	0.16	0.13	-0.09	
23284.00	90.250	160.860	7139.02	15339.22	-13412.64	8165.69	1724266.13	14351547.08	39°31'13.3963"N	80°42'9.6115"W	15702.79	148.667	0.37	0.23	0.29	
23379.00	89.820	160.620	7138.96	15434.22	-13502.33	8197.03	1724297.46	14351457.43	39°31'12.5089"N	80°42'9.2154"W	15795.70	148.739	0.52	-0.45	-0.25	
23473.00	89.750	160.630	7139.31	15528.22	-13591.00	8228.21	1724328.63	14351368.79	39°31'11.6315"N	80°42'8.8212"W	15887.69	148.809	0.08	-0.07	0.01	
23568.00	89.940	160.350	7139.57	15623.21	-13680.55	8259.94	1724360.34	14351279.28	39°31'10.7455"N	80°42'8.4201"W	15980.74	148.878	0.36	0.20	-0.29	
23663.00	89.780	160.180	7139.80	15718.20	-13769.97	8292.02	1724392.41	14351189.90	39°31'9.8606"N	80°42'8.0146"W	16073.88	148.944	0.25	-0.17	-0.18	
23758.00	89.110	160.290	7140.72	15813.19	-13859.37	8324.14	1724424.52	14351100.53	39°31'8.9760"N	80°42'7.6084"W	16167.05	149.010	0.71	-0.71	0.12	
23853.00	89.510	160.410	7141.86	15908.18	-13948.83	8356.09	1724456.45	14351011.11	39°31'8.0908"N	80°42'7.2046"W	16260.20	149.076	0.44	0.42	0.13	
23948.00	89.450	160.480	7142.73	16003.17	-14038.34	8387.88	1724488.23	14350921.63	39°31'7.2051"N	80°42'6.8027"W	16353.34	149.142	0.10	-0.06	0.07	
24042.00	89.750	160.680	7143.38	16097.16	-14126.99	8419.14	1724519.48	14350833.01	39°31'6.3279"N	80°42'6.4076"W	16445.48	149.207	0.38	0.32	0.21	
24137.00	89.600	160.340	7143.92	16192.16	-14216.55	8450.83	1724551.16	14350743.49	39°31'5.4418"N	80°42'6.0070"W	16538.65	149.271	0.39	-0.16	-0.36	
24232.00	89.320	160.440	7144.82	16287.15	-14306.03	8482.71	1724583.03	14350654.04	39°31'4.5563"N	80°42'5.6039"W	16631.87	149.334	0.31	-0.29	0.11	
24327.00	89.690	160.830	7145.64	16382.14	-14395.66	8514.21	1724614.52	14350564.46	39°31'3.6695"N	80°42'5.2058"W	16725.03	149.398	0.57	0.39	0.41	
24422.00	89.420	160.370	7146.37	16477.14	-14485.26	8545.77	1724646.06	14350474.89	39°31'2.7829"N	80°42'4.8070"W	16818.23	149.461	0.56	-0.28	-0.48	
24516.00	90.030	160.670	7146.83	16571.13	-14573.88	8577.11	1724677.39	14350386.31	39°31'1.9061"N	80°42'4.4107"W	16910.49	149.522	0.72	0.65	0.32	
24611.00	89.880	160.570	7146.90	16666.13	-14663.49	8608.64	1724708.90	14350296.72	39°31'1.0193"N	80°42'4.0123"W	17003.73	149.584	0.19	-0.16	-0.11	



Actual Wellpath Report

Eckleberry Unit 2H AWP Proj: 25334'
Page 11 of 13



REFERENCE WELLPATH IDENTIFICATION				
Operator	ANTERO RESOURCES CORPORATION		Well	Eckleberry Unit 2H
Field	Wetzel		API	47-103-03493-0000
Facility	Furbee Pad		Wellbore	Eckleberry Unit 2H AWB
Slot	Slot A			

WELLPATH DATA (279 stations) † = interpolated, ‡ = extrapolated station																
MD [ft]	Inclination [°]	Azimuth [°]	TVD [ft]	Vert Sect [ft]	North [ft]	East [ft]	Grid East [US ft]	Grid North [US ft]	Latitude	Longitude	Closure Dist [ft]	Closure Dir [°]	DLS [°/100ft]	Build Rate [°/100ft]	Turn Rate [°/100ft]	Comments
24705.00	89.850	160.280	7147.12	16760.12	-14752.06	8640.13	1724740.38	14350208.19	39°31'0.1430"N	80°42'3.6142"W	17096.06	149.643	0.31	-0.03	-0.31	
24800.00	89.750	160.460	7147.45	16855.12	-14841.54	8672.04	1724772.29	14350118.75	39°30'59.2576"N	80°42'3.2108"W	17189.40	149.702	0.22	-0.11	0.19	
24895.00	89.630	160.450	7147.97	16950.11	-14931.06	8703.83	1724804.05	14350029.26	39°30'58.3717"N	80°42'2.8090"W	17282.74	149.761	0.13	-0.13	-0.01	
24989.00	89.850	160.520	7148.39	17044.10	-15019.66	8735.23	1724835.44	14349940.70	39°30'57.4951"N	80°42'2.4121"W	17375.11	149.818	0.25	0.23	0.07	
25084.00	89.880	160.440	7148.62	17139.10	-15109.20	8766.97	1724867.17	14349851.19	39°30'56.6091"N	80°42'2.0109"W	17468.48	149.876	0.09	0.03	-0.08	
25178.00	89.880	160.300	7148.81	17233.09	-15197.74	8798.55	1724898.74	14349762.69	39°30'55.7330"N	80°42'1.6117"W	17560.91	149.932	0.15	0.00	-0.15	
25273.00	89.820	160.600	7149.06	17328.09	-15287.26	8830.34	1724930.52	14349673.20	39°30'54.8472"N	80°42'1.2099"W	17654.33	149.988	0.32	-0.06	0.32	
25309.00	89.940	160.600	7149.14	17364.09	-15321.22	8842.30	1724942.47	14349639.26	39°30'54.5112"N	80°42'1.0588"W	17689.71	150.010	0.33	0.33	0.00	
25334.00‡	89.940	160.600	7149.17	17389.09	-15344.80	8850.60	1724950.77	14349615.69	39°30'54.2779"N	80°42'0.9538"W	17714.29	150.024	0.00	0.00	0.00	Projected MD at TD: 25334'

HOLE & CASING SECTIONS - Ref Wellbore: Eckleberry Unit 2H AWB Ref Wellpath: Eckleberry Unit 2H AWP Proj: 25334'									
String/Diameter	Start MD [ft]	End MD [ft]	Interval [ft]	Start TVD [ft]	End TVD [ft]	Start N/S [ft]	Start E/W [ft]	End N/S [ft]	End E/W [ft]
20in Conductor	30.00	130.00	100.00	30.00	130.00	0.00	0.00	-0.07	0.06
17.5in Open Hole	130.00	680.00	550.00	130.00	679.99	-0.07	0.06	-1.94	1.86
13.375in Casing Surface	30.00	660.00	630.00	30.00	659.99	0.00	0.00	-1.89	1.81
12.25in Open Hole	680.00	3810.00	3130.00	679.99	3466.77	-1.94	1.86	572.92	1205.66
9.625in Casing Intermediate	30.00	3790.00	3760.00	30.00	3449.13	0.00	0.00	568.60	1197.27
8.75in Open Hole	3810.00	7175.00	3365.00	3466.77	6352.47	572.92	1205.66	1263.07	2787.37
8.5in Open Hole	7175.00	25334.00	18159.00	6352.47	7149.17	1263.07	2787.37	-15344.80	8850.60
5.5in Casing Production	30.00	25314.00	25284.00	30.00	7149.14	0.00	0.00	-15325.93	8843.96



Actual Wellpath Report

Eckleberry Unit 2H AWP Proj: 25334'

Page 12 of 13



REFERENCE WELLPATH IDENTIFICATION			
Operator	ANTERO RESOURCES CORPORATION	Well	Eckleberry Unit 2H
Field	Wetzel	API	47-103-03493-0000
Facility	Furbee Pad	Wellbore	Eckleberry Unit 2H AWB
Slot	Slot A		

TARGETS								
Name	TVD [ft]	North [ft]	East [ft]	Grid East [US ft]	Grid North [US ft]	Latitude	Longitude	Shape
Eckleberry Unit 2H POE Rev-2	7040.00	873.59	3260.39	1719362.77	14365827.66	39°33'34.7459"N	80°43'11.6377"W	point
Eckleberry Unit 2H BHL Plat	7047.00	-13414.75	8173.29	1724273.73	14351544.97	39°31'13.3752"N	80°42'9.5146"W	point
Eckleberry Unit 2H LP Rev-2	7068.00	689.59	3323.69	1719426.05	14365643.73	39°33'32.9255"N	80°43'10.8368"W	point
Eckleberry Unit 2H BHL Rev-2	7156.82	-15351.46	8842.52	1724942.69	14349609.03	39°30'54.2123"N	80°42'1.0573"W	point
Eckleberry Unit 2H 50' L/R Hard Line	7250.00	-7238.94	6051.45	1722152.73	14357718.34	39°32'14.4807"N	80°42'36.3363"W	rectangle
2D Rectangle 17158.5 x 100.								

WELLPATH COMPOSITION - Ref Wellbore: Eckleberry Unit 2H AWB Ref Wellpath: Eckleberry Unit 2H AWP Proj: 25334'					
Start MD [ft]	End MD [ft]	Positional Uncertainty Model	Log Name/Comment	Wellbore	Survey Date
30.00	561.00	Gyrodatta 2015 - GC+WIR+DPIPE	01 Gyrodatta MS Gyro <17-1/2"> (100'-561')	Eckleberry Unit 2H AWB	9/1/2022
561.00	3736.00	BH NaviTrak (2019) (Axial Corr+HRGM)	02 APS EM <12-1/4"> (561')(687'-3736')	Eckleberry Unit 2H AWB	9/1/2022
3736.00	7103.00	BH NaviTrak (2019) (Axial Corr+HRGM)	03 APS EM <8-3/4"> (3736')(3794'-7103')	Eckleberry Unit 2H AWB	11/2/2022
7103.00	25334.00	BH AutoTrak Curve/eXpress (2019) (HRGM, Short spacing)	04 BH AT Curve <8-1/2"> (7103')(7150'-25309')	Eckleberry Unit 2H AWB	11/2/2022



Actual Wellpath Report

Eckleberry Unit 2H AWP Proj: 25334'

Page 13 of 13



REFERENCE WELLPATH IDENTIFICATION			
Operator	ANTERO RESOURCES CORPORATION	Well	Eckleberry Unit 2H
Field	Wetzel	API	47-103-03493-0000
Facility	Furbee Pad	Wellbore	Eckleberry Unit 2H AWB
Slot	Slot A		

COMMENTS
<p>Wellpath general comments API: 47-103-03493-0000 BH Job #: 111490424 Rig: H&P 519 Duration: 11/4/2022-11/10/2022 Gyrodata MS Gyro <17-1/2"> (100'-561') APS EM <12-1/4"> (561')(687'-3736') APS EM <8-3/4"> (3736')(3794'-7103') BH AT Curve <8-1/2"> (7103')(7150'-25309') Sycamore: 7590' MD Middlesex: 7767' MD Burkett: 7927' MD Tully: 7987' MD Hamilton: 8100' MD Marcellus POE: 8237' MD Projected MD at TD: 25334'</p>

RECEIVED
 Office of Oil and Gas
MAY 10 2023
 WV Department of
 Environmental Protection