



ANTERO RESOURCES CORPORATION



Location: Wetzel County, WV
 Field: Wetzel
 Facility: Journeyman Pad

Slot: Slot G
 Well: Welder Unit 2H
 Wellbore: Welder Unit 2H PWB

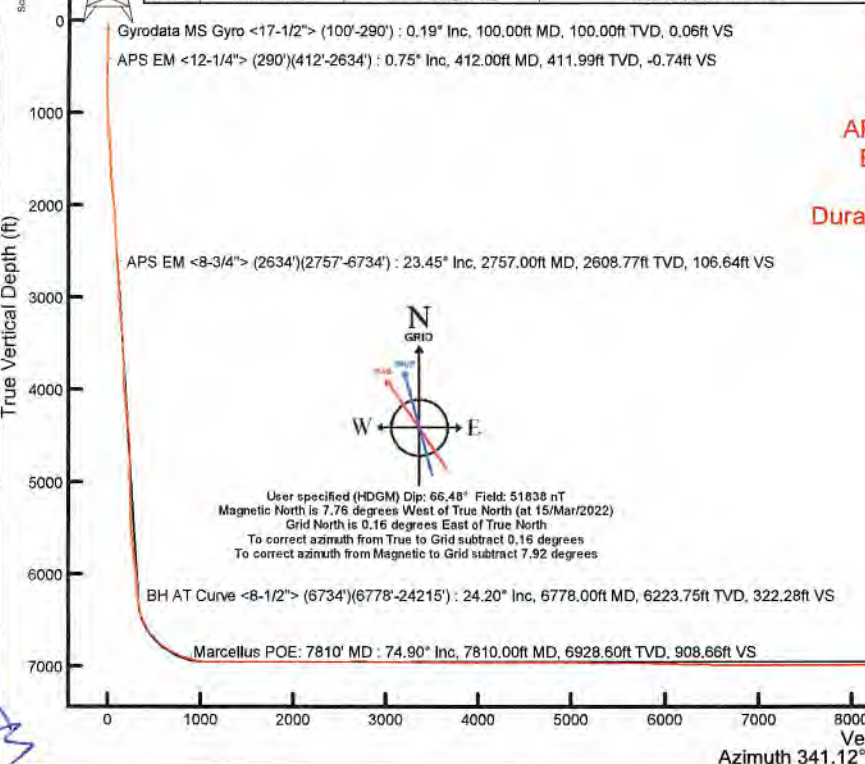
Easting (ft)

Plot reference wellpath is Welder Unit 2H PWP Rev-B.0	Grid System: NAD27 / UTM Zone 17 North, US Intl
True vertical depths are referenced to H&P 519 (RKB)	Northing Reference: Grid north
Reference wellpath measured depths are referenced to H&P 519 (RKB)	Scale: True distance
H&P 519 (RKB) to Mean Sea Level: 1184 feet	Coordinates are in feet referenced to Slot
Mean Sea Level to Ground level (At Slot Slot G): -1154 feet	Depths are in feet
Official wellpath MDs are referenced to each path's default MD datum	Created by: redcaryn on 2023-03-28; Database: WA_MPL_EASTERNUS_Dels

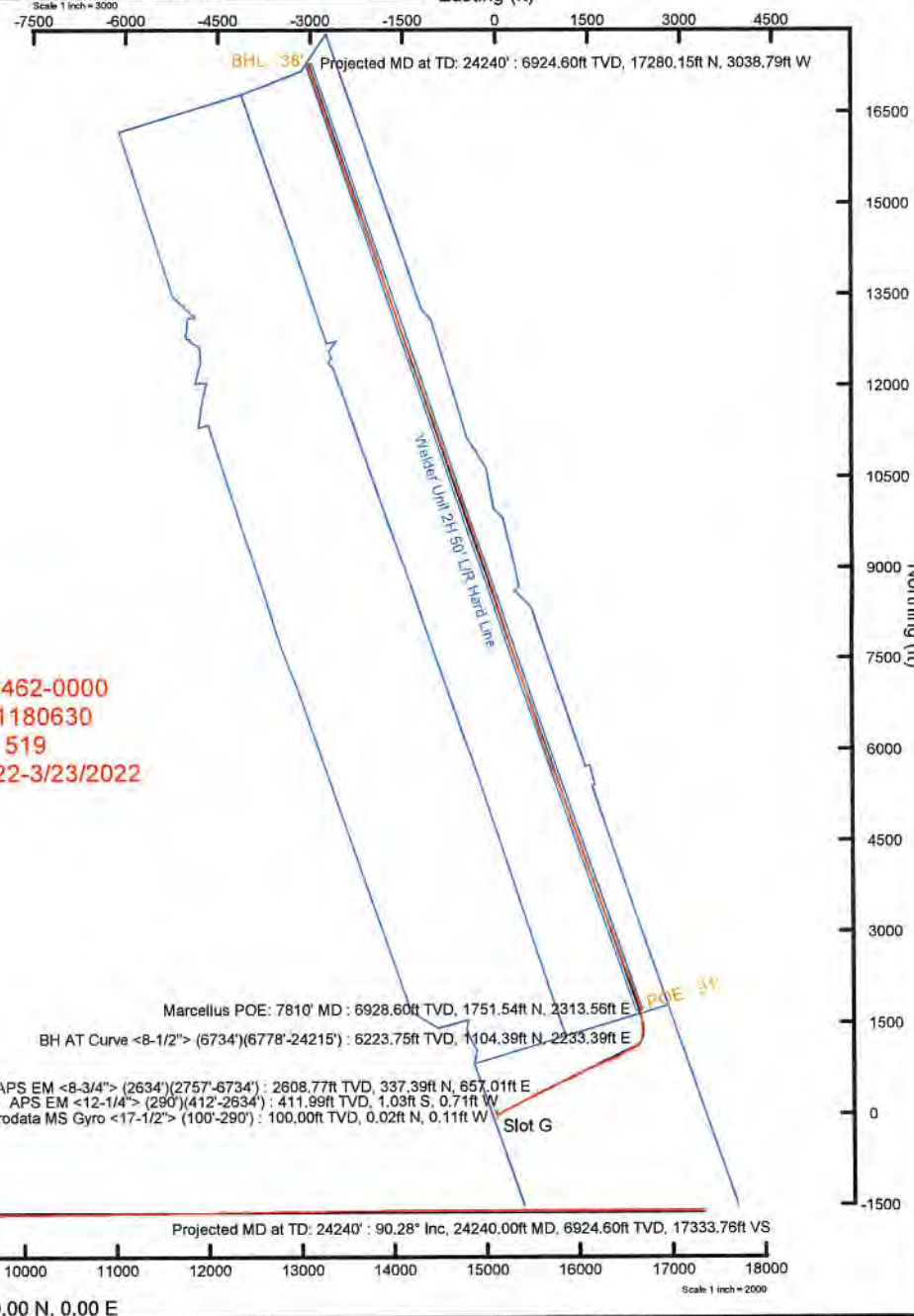
Location Information				
Facility Name	Grid East (US ft)	Grid North (US ft)	Latitude	Longitude
Journeyman Pad	1712638.290	14361600.746	39°32'53.1520"N	80°44'37.6810"W
Slot	Local N (ft)	Local E (ft)	Grid East (US ft)	Grid North (US ft)
Slot G	-36.65	26.11	1712664.390	14361564.110
Comment	Welder Unit 2H			
H&P 519 (RKB) to Ground level (At Slot Slot G)	30ft			
Mean Sea Level to Ground level (At Slot Slot G)	-1154ft			
H&P 519 (RKB) to Mean Sea Level	1184ft			

Well Profile Data								
Design Comment	MD (ft)	Inc (")	Az (°)	TVD (ft)	Local N (ft)	Local E (ft)	DLS (°/100ft)	VS (ft)
Tie On	2634.00	24.170	60.790	2496.24	312.17	814.25	1.43	86.61
Proj. to Bottom	2707.00	24.170	60.790	2562.84	326.76	840.34	0.00	101.87
Drill Out	2787.00	24.170	60.790	2635.82	342.75	868.93	0.00	107.85
End of 3D Arc	2889.20	25.760	63.834	2728.47	362.75	707.13	2.00	114.42
Curve KOP	6867.49	25.760	63.834	6311.40	1125.18	2258.94	0.00	333.58
POE	7775.75	74.217	341.124	8929.00	1705.70	2300.41	8.00	869.54
Landing Pt.	7973.03	80.000	341.124	8956.00	1890.02	2237.39	8.00	1064.34
BHL	24250.19	80.000	341.124	6856.00	17291.81	-3028.59	0.00	17341.49

Well Data				
Slot	Well	Wellbore	Wellpath	
Slot G	Welder Unit 2H	Welder Unit 2H AWB	Welder Unit 2H AWP Proj. 24240'	
Slot G	Welder Unit 2H	Welder Unit 2H PWB	Welder Unit 2H PWP Rev-B.0	



API: 47-103-03462-0000
 BH Job #: 111180630
 Rig: H&P 519
 Duration: 3/18/2022-3/23/2022





Actual Wellpath Report

Welder Unit 2H AWP Proj: 24240'

Page 1 of 13



REFERENCE WELLPATH IDENTIFICATION			
Operator	ANTERO RESOURCES CORPORATION	Well	Welder Unit 2H
Field	Wetzel	API	47-103-03462-0000
Facility	Journeyman Pad	Wellbore	Welder Unit 2H AWB
Slot	Slot G		

REPORT SETUP INFORMATION			
Projection System	NAD27 / UTM Zone 17 North, US feet	Software System	WellArchitect® 6.0
North Reference	Grid	User	Edsaryar
Scale	0.999606	Report Generated	28/Mar/2022 at 19:20
Convergence at slot	0.16° East	Database	WA_MPL_EASTERNUS_Defn

WELLPATH LOCATION						
	Local coordinates		Grid coordinates		Geographic coordinates	
	North[ft]	East[ft]	Easting[US ft]	Northing[US ft]	Latitude	Longitude
Slot Location	-36.65	26.11	1712664.39	14361564.11	39°32'52.7890"N	80°44'37.3490"W
Facility Reference Pt			1712638.29	14361600.75	39°32'53.1520"N	80°44'37.6810"W
Field Reference Pt			0.00	0.00	0°00'0.0000"	85°29'19.3013"W

WELLPATH DATUM			
Calculation method	Minimum curvature	H&P 519 (RKB) to Facility Vertical Datum	1184.00ft
Horizontal Reference Pt	Slot	H&P 519 (RKB) to Mean Sea Level	1184.00ft
Vertical Reference Pt	H&P 519 (RKB)	H&P 519 (RKB) to Ground Level at Slot (Slot G)	30.00ft
MD Reference Pt	H&P 519 (RKB)	Section Origin	N 0.00, E 0.00 ft
Field Vertical Reference	Mean Sea Level	Section Azimuth	341.12°

DA



Actual Wellpath Report

Welder Unit 2H AWP Proj: 24240'
Page 2 of 13



REFERENCE WELLPATH IDENTIFICATION			
Operator	ANTERO RESOURCES CORPORATION	Well	Welder Unit 2H
Field	Wetzel	API	47-103-03462-0000
Facility	Journeyman Pad	Wellbore	Welder Unit 2H AWB
Slot	Slot G		

WELLPATH DATA (265 stations) † = interpolated, ‡ = extrapolated station																
MD	Inclination	Azimuth	TVD	Vert Sect	North	East	Grid East	Grid North	Latitude	Longitude	Closure Dist	Closure Dir	DLS	Build Rate	Turn Rate	Comments
(ft)	(°)	(°)	(ft)	(ft)	(ft)	(ft)	(US ft)	(US ft)			(ft)	(°)	(°/100ft)	(°/100ft)	(°/100ft)	
0.00	0.00	280.800	0.00	0.00	0.00	0.00	1712664.39	14361564.11	39°32'52.7890"N	80°44'37.3490"W	0.00	0.000	0.00	0.00	0.00	
30.00	0.000	280.800	30.00	0.00	0.00	0.00	1712664.39	14361564.11	39°32'52.7890"N	80°44'37.3490"W	0.00	0.000	0.00	0.00	0.00	
100.00	0.190	280.800	100.00	0.06	0.02	-0.11	1712664.28	14361564.13	39°32'52.7893"N	80°44'37.3505"W	0.12	280.800	0.27	0.27	0.00	Gyrodata MS Gyro <17-1/2"> (100'-290')
200.00	0.230	323.610	200.00	0.33	0.21	-0.40	1712663.99	14361564.32	39°32'52.7912"N	80°44'37.3541"W	0.45	298.433	0.16	0.04	42.81	
290.00	0.340	200.420	290.00	0.30	0.11	-0.60	1712663.79	14361564.22	39°32'52.7901"N	80°44'37.3566"W	0.61	280.410	0.56	0.12	-136.88	
412.00	0.750	178.970	411.99	-0.74	-1.03	-0.71	1712663.68	14361563.08	39°32'52.7789"N	80°44'37.3581"W	1.25	214.564	0.37	0.34	-17.58	APS EM <12-1/4"> (290')(412'-2634')
502.00	1.000	112.760	501.98	-1.83	-1.92	0.03	1712664.42	14361562.19	39°32'52.7701"N	80°44'37.3488"W	1.92	179.207	1.09	0.28	-73.57	
593.00	3.300	77.630	592.92	-2.65	-1.67	3.32	1712667.71	14361562.44	39°32'52.7725"N	80°44'37.3067"W	3.71	116.676	2.80	2.53	-38.60	
684.00	5.460	74.770	683.65	-3.22	0.03	10.05	1712674.44	14361564.14	39°32'52.7891"N	80°44'37.2207"W	10.05	89.819	2.38	2.37	-3.14	
777.00	6.940	64.130	776.10	-2.82	3.65	19.38	1712683.76	14361567.75	39°32'52.8245"N	80°44'37.1015"W	19.72	79.346	2.01	1.59	-11.44	
869.00	8.580	60.350	867.26	-0.86	9.47	30.35	1712694.72	14361573.57	39°32'52.8817"N	80°44'36.9613"W	31.79	72.674	1.87	1.78	-4.11	
963.00	10.590	57.500	959.94	2.48	17.58	43.73	1712708.10	14361581.68	39°32'52.9615"N	80°44'36.7902"W	47.13	68.101	2.20	2.14	-3.03	
1053.00	12.840	55.600	1048.06	7.11	27.67	58.95	1712723.32	14361591.77	39°32'53.0609"N	80°44'36.5955"W	65.13	64.856	2.54	2.50	-2.11	
1148.00	15.040	56.860	1140.26	12.97	40.38	77.99	1712742.35	14361604.47	39°32'53.1859"N	80°44'36.3520"W	87.82	62.629	2.34	2.32	1.33	
1243.00	16.860	60.220	1231.60	18.61	53.96	100.27	1712764.62	14361618.05	39°32'53.3195"N	80°44'36.0671"W	113.86	61.714	2.15	1.92	3.54	
1337.00	18.690	62.770	1321.11	23.37	67.62	125.49	1712789.83	14361631.70	39°32'53.4538"N	80°44'35.7446"W	142.55	61.682	2.12	1.95	2.71	
1432.00	20.780	63.870	1410.52	27.71	82.01	154.16	1712818.49	14361646.09	39°32'53.5952"N	80°44'35.3781"W	174.62	61.988	2.23	2.20	1.16	
1527.00	22.220	66.750	1498.91	31.21	96.52	185.80	1712850.11	14361660.59	39°32'53.7378"N	80°44'34.9737"W	209.37	62.548	1.88	1.52	3.03	
1622.00	24.510	66.130	1586.12	34.29	111.59	220.33	1712884.63	14361675.66	39°32'53.8857"N	80°44'34.5324"W	246.97	63.139	2.42	2.41	-0.65	
1717.00	26.650	64.040	1671.80	38.63	128.89	257.51	1712921.80	14361692.95	39°32'54.0557"N	80°44'34.0571"W	287.96	63.410	2.44	2.25	-2.20	
1811.00	26.450	62.690	1755.89	44.30	147.73	295.06	1712959.34	14361711.78	39°32'54.2407"N	80°44'33.5770"W	329.98	63.405	0.68	-0.21	-1.44	
1906.00	26.620	61.360	1840.88	51.01	167.63	332.54	1712996.80	14361731.68	39°32'54.4364"N	80°44'33.0979"W	372.40	63.247	0.65	0.18	-1.40	
2000.00	27.040	60.830	1924.77	58.40	188.14	369.68	1713033.93	14361752.18	39°32'54.6381"N	80°44'32.6230"W	414.80	63.027	0.51	0.45	-0.56	
2095.00	26.420	59.460	2009.61	66.52	209.41	406.74	1713070.97	14361773.43	39°32'54.8472"N	80°44'32.1491"W	457.48	62.759	0.92	-0.65	-1.44	
2190.00	26.440	62.050	2094.69	74.13	230.06	443.63	1713107.84	14361794.08	39°32'55.0503"N	80°44'31.6775"W	499.73	62.589	1.21	0.02	2.73	
2284.00	25.320	65.460	2179.26	79.41	248.22	480.40	1713144.60	14361812.23	39°32'55.2287"N	80°44'31.2074"W	540.74	62.675	1.98	-1.19	3.63	
2379.00	25.520	66.000	2265.07	83.24	264.98	517.58	1713181.76	14361828.99	39°32'55.3933"N	80°44'30.7322"W	581.46	62.889	0.32	0.21	0.57	
2474.00	25.310	64.940	2350.87	87.25	281.91	554.67	1713218.84	14361845.90	39°32'55.5595"N	80°44'30.2581"W	622.20	63.058	0.53	-0.22	-1.12	
2569.00	24.550	62.840	2437.02	92.28	299.52	590.62	1713254.78	14361863.51	39°32'55.7325"N	80°44'29.7985"W	662.23	63.110	1.23	-0.80	-2.21	
2634.00	24.170	60.790	2496.24	96.61	312.17	614.25	1713278.40	14361876.16	39°32'55.8570"N	80°44'29.4963"W	689.03	63.060	1.43	-0.58	-3.15	



Actual Wellpath Report

Welder Unit 2H AWP Proj: 24240'

Page 3 of 13



REFERENCE WELLPATH IDENTIFICATION			
Operator	ANTERO RESOURCES CORPORATION	Well	Welder Unit 2H
Field	Wetzel	API	47-103-03462-0000
Facility	Journeyman Pad	Wellbore	Welder Unit 2H AWB
Slot	Slot G		

WELLPATH DATA (265 stations)																
MD	Inclination	Azimuth	TVD	Vert Sect	North	East	Grid East	Grid North	Latitude	Longitude	Closure Dist	Closure Dir	DLS	Build Rate	Turn Rate	Comments
[ft]	[°]	[°]	[ft]	[ft]	[ft]	[ft]	[US ft]	[US ft]			[ft]	[°]	[°/100ft]	[°/100ft]	[°/100ft]	
2757.00	23.450	58.110	2608.77	106.64	337.39	657.01	1713321.14	14361901.37	39°32'56.1050"N	80°44'28.9496"W	738.58	62.818	1.06	-0.59	-2.18	APS EM <8-3/4"> (2634')(2757'-6734')
2851.00	24.530	62.280	2694.66	113.95	356.35	690.17	1713354.29	14361920.32	39°32'56.2914"N	80°44'28.5256"W	776.74	62.692	2.14	1.15	4.44	
2946.00	25.040	67.420	2780.91	118.18	373.25	726.20	1713390.30	14361937.21	39°32'56.4574"N	80°44'28.0651"W	816.50	62.798	2.33	0.54	5.41	
3041.00	24.730	66.310	2867.09	121.14	388.95	762.96	1713427.04	14361952.91	39°32'56.6115"N	80°44'27.5952"W	856.38	62.988	0.59	-0.33	-1.17	
3135.00	26.900	67.310	2951.71	124.20	405.06	800.59	1713464.66	14361969.01	39°32'56.7696"N	80°44'27.1143"W	897.22	63.163	2.35	2.31	1.06	
3233.00	27.210	64.670	3038.99	128.19	423.19	841.29	1713505.35	14361987.14	39°32'56.9477"N	80°44'26.5940"W	941.74	63.296	1.27	0.32	-2.69	
3327.00	27.040	62.790	3122.65	133.70	442.16	879.72	1713543.76	14362006.09	39°32'57.1341"N	80°44'26.1027"W	984.59	63.315	0.93	-0.18	-2.00	
3421.00	26.600	60.570	3206.54	140.65	462.27	917.05	1713581.08	14362026.20	39°32'57.3318"N	80°44'25.6254"W	1026.98	63.248	1.16	-0.47	-2.36	
3516.00	25.700	58.290	3291.82	149.12	483.55	953.10	1713617.11	14362047.47	39°32'57.5411"N	80°44'25.1644"W	1068.75	63.099	1.42	-0.95	-2.40	
3611.00	25.890	61.620	3377.36	157.12	504.24	988.88	1713652.87	14362068.15	39°32'57.7445"N	80°44'24.7070"W	1110.01	62.983	1.54	0.20	3.51	
3706.00	25.770	66.010	3462.87	162.38	522.49	1025.99	1713689.98	14362086.39	39°32'57.9239"N	80°44'24.2325"W	1151.37	63.012	2.02	-0.13	4.62	
3800.00	24.580	63.610	3547.95	166.76	539.49	1062.18	1713726.15	14362103.39	39°32'58.0908"N	80°44'23.7699"W	1191.33	63.074	1.67	-1.27	-2.55	
3895.00	22.810	65.780	3634.93	171.05	555.83	1096.67	1713760.63	14362119.72	39°32'58.2513"N	80°44'23.3290"W	1229.49	63.123	2.08	-1.86	2.28	
3990.00	24.980	68.450	3721.79	173.70	570.75	1132.13	1713796.07	14362134.64	39°32'58.3978"N	80°44'22.8758"W	1267.86	63.245	2.55	2.28	2.81	
4084.00	28.000	70.070	3805.91	175.03	585.57	1171.34	1713835.27	14362149.45	39°32'58.5431"N	80°44'22.3746"W	1309.56	63.439	3.30	3.21	1.72	
4179.00	27.980	67.300	3889.80	176.93	601.77	1212.87	1713876.78	14362165.64	39°32'58.7021"N	80°44'21.8439"W	1353.95	63.611	1.37	-0.02	-2.92	
4274.00	27.660	63.730	3973.83	181.25	620.13	1253.20	1713917.10	14362184.00	39°32'58.8824"N	80°44'21.3283"W	1398.24	63.672	1.79	-0.34	-3.76	
4369.00	26.130	60.000	4058.56	188.12	640.35	1291.10	1713954.98	14362204.21	39°32'59.0811"N	80°44'20.8438"W	1441.18	63.620	2.40	-1.61	-3.93	
4463.00	26.420	63.580	4142.85	194.85	660.01	1327.76	1713991.62	14362223.86	39°32'59.2743"N	80°44'20.3752"W	1482.75	63.569	1.71	0.31	3.81	
4558.00	26.050	61.370	4228.07	201.16	679.41	1364.99	1714028.84	14362243.25	39°32'59.4650"N	80°44'19.8991"W	1524.73	63.539	1.10	-0.39	-2.33	
4653.00	23.640	58.100	4314.27	208.99	699.47	1399.48	1714063.32	14362263.31	39°32'59.6623"N	80°44'19.4581"W	1564.55	63.444	2.92	-2.54	-3.44	
4748.00	23.260	56.940	4401.43	217.87	719.77	1431.37	1714095.20	14362283.60	39°32'59.8620"N	80°44'19.0502"W	1602.15	63.304	0.63	-0.40	-1.22	
4843.00	22.860	57.250	4488.83	226.89	739.99	1462.61	1714126.42	14362303.80	39°33'0.0609"N	80°44'18.6506"W	1639.15	63.164	0.44	-0.42	0.33	
4938.00	22.330	61.760	4576.55	234.25	758.51	1494.03	1714157.83	14362322.32	39°33'0.2431"N	80°44'18.2488"W	1675.55	63.083	1.91	-0.56	4.75	
5032.00	24.130	69.530	4662.95	237.69	773.68	1527.78	1714191.56	14362337.49	39°33'0.3921"N	80°44'17.8175"W	1712.51	63.142	3.78	1.91	8.27	
5127.00	26.590	70.340	4748.78	238.52	787.63	1566.00	1714229.77	14362351.43	39°33'0.5288"N	80°44'17.3291"W	1752.91	63.300	2.62	2.59	0.85	
5224.00	28.260	71.670	4834.88	238.59	802.16	1608.24	1714272.00	14362365.95	39°33'0.6712"N	80°44'16.7892"W	1797.19	63.491	1.83	1.72	1.37	
5316.00	26.620	69.950	4916.53	238.80	816.07	1648.28	1714312.02	14362379.86	39°33'0.8076"N	80°44'16.2776"W	1839.24	63.660	1.98	-1.78	-1.87	
5411.00	24.580	65.420	5002.21	241.20	831.59	1686.25	1714349.97	14362395.37	39°33'0.9598"N	80°44'15.7923"W	1880.16	63.749	2.97	-2.15	-4.77	
5505.00	24.670	67.890	5087.66	244.25	847.11	1722.21	1714385.91	14362410.88	39°33'1.1122"N	80°44'15.3327"W	1919.27	63.809	1.10	0.10	2.63	



Actual Wellpath Report

Welder Unit 2H AWP Proj: 24240'

Page 4 of 13



REFERENCE WELLPATH IDENTIFICATION			
Operator	ANTERO RESOURCES CORPORATION	Well	Welder Unit 2H
Field	Wetzel	API	47-103-03462-0000
Facility	Journeyman Pad	Wellbore	Welder Unit 2H AWB
Slot	Slot G		

WELLPATH DATA (265 stations) † = interpolated, ‡ = extrapolated station																
MD	Inclination	Azimuth	TVD	Vert Sect	North	East	Grid East	Grid North	Latitude	Longitude	Closure Dist	Closure Dir	DLS	Build Rate	Turn Rate	Comments
[ft]	[°]	[°]	[ft]	[ft]	[ft]	[ft]	[US ft]	[US ft]			[ft]	[°]	["/100ft]	["/100ft]	["/100ft]	
5600.00	28.130	63.040	5172.75	248.52	864.73	1760.55	1714424.24	14362428.50	39°33'1.2852"N	80°44'14.8425"W	1961.45	63.841	4.29	3.64	-5.11	
5694.00	27.210	72.610	5256.04	251.07	881.21	1800.83	1714464.51	14362444.97	39°33'1.4469"N	80°44'14.3277"W	2004.88	63.926	4.82	-0.98	10.18	
5789.00	27.530	69.900	5340.41	250.98	895.25	1842.18	1714505.84	14362459.00	39°33'1.5845"N	80°44'13.7994"W	2048.19	64.082	1.35	0.34	-2.85	
5883.00	28.950	67.160	5423.22	253.01	911.55	1883.55	1714547.19	14362475.30	39°33'1.7444"N	80°44'13.2706"W	2092.53	64.175	2.05	1.51	-2.93	
5978.00	27.260	63.250	5507.02	257.58	930.27	1924.17	1714587.80	14362494.01	39°33'1.9282"N	80°44'12.7514"W	2137.25	64.198	2.63	-1.78	-4.11	
6072.00	28.000	61.560	5590.30	264.20	950.47	1962.80	1714626.41	14362514.20	39°33'2.1268"N	80°44'12.2575"W	2180.82	64.162	1.15	0.79	-1.80	
6167.00	26.630	58.890	5674.71	272.41	972.09	2000.64	1714664.24	14362535.82	39°33'2.3394"N	80°44'11.7736"W	2224.30	64.085	1.93	-1.44	-2.81	
6261.00	26.790	59.260	5758.68	281.23	993.81	2036.88	1714700.47	14362557.52	39°33'2.5529"N	80°44'11.3101"W	2266.39	63.992	0.25	0.17	0.39	
6356.00	27.310	59.110	5843.29	290.16	1015.94	2073.99	1714737.55	14362579.64	39°33'2.7706"N	80°44'10.8356"W	2309.45	63.902	0.55	0.55	-0.16	
6451.00	27.330	58.780	5927.69	299.36	1038.43	2111.34	1714774.89	14362602.13	39°33'2.9918"N	80°44'10.3579"W	2352.89	63.810	0.16	0.02	-0.35	
6545.00	25.100	60.860	6012.02	307.52	1059.33	2147.21	1714810.75	14362623.02	39°33'3.1973"N	80°44'9.8992"W	2394.30	63.741	2.57	-2.37	2.21	
6640.00	24.590	62.490	6098.23	314.08	1078.27	2182.34	1714845.87	14362641.95	39°33'3.3834"N	80°44'9.4500"W	2434.19	63.707	0.90	-0.54	1.72	
6734.00	24.640	63.160	6183.69	319.73	1096.15	2217.17	1714880.68	14362659.82	39°33'3.5592"N	80°44'9.0047"W	2473.34	63.693	0.30	0.05	0.71	
6778.00	24.200	62.940	6223.75	322.28	1104.39	2233.39	1714896.89	14362668.06	39°33'3.6402"N	80°44'8.7974"W	2491.53	63.688	1.02	-1.00	-0.50	BH AT Curve <8-1/2"> (6734')(6778'-24215')
6841.00	23.980	54.570	6281.28	327.76	1117.69	2255.32	1714918.82	14362681.36	39°33'3.7710"N	80°44'8.5168"W	2517.09	63.638	5.43	-0.35	-13.29	
6936.00	25.220	44.280	6367.70	342.41	1143.39	2285.20	1714948.68	14362707.04	39°33'4.0240"N	80°44'8.1345"W	2555.28	63.419	4.69	1.31	-10.83	
7031.00	27.280	35.470	6452.93	364.25	1175.62	2311.98	1714975.45	14362739.27	39°33'4.3419"N	80°44'7.7914"W	2593.71	63.047	4.63	2.17	-9.27	
7125.00	31.370	16.290	6535.05	396.89	1216.76	2331.39	1714994.86	14362780.39	39°33'4.7479"N	80°44'7.5421"W	2629.81	62.440	10.85	4.35	-20.40	
7193.00†	35.541	9.078	6591.79	428.84	1253.30	2339.48	1715002.94	14362816.91	39°33'5.1087"N	80°44'7.4374"W	2654.04	61.821	8.46	6.13	-10.61	Sycamore: 7193' MD
7220.00†	37.300	6.620	6613.52	443.16	1269.17	2341.66	1715005.12	14362832.78	39°33'5.2656"N	80°44'7.4090"W	2663.49	61.542	8.46	6.52	-9.10	
7314.00	43.450	3.400	6685.10	498.83	1329.80	2346.87	1715010.33	14362893.38	39°33'5.8646"N	80°44'7.3402"W	2697.43	60.463	6.91	6.54	-3.43	
7363.00†	46.224	1.666	6719.85	531.00	1364.31	2348.38	1715011.84	14362927.88	39°33'6.2056"N	80°44'7.3196"W	2715.92	59.845	6.19	5.66	-3.54	Middlesex: 7363' MD
7409.00	48.850	0.180	6750.90	562.92	1398.23	2348.92	1715012.38	14362961.79	39°33'6.5409"N	80°44'7.3115"W	2733.58	59.236	6.19	5.71	-3.23	
7504.00	57.460	356.550	6807.83	635.48	1474.13	2346.62	1715010.08	14363037.65	39°33'7.2911"N	80°44'7.3380"W	2771.22	57.863	9.56	9.06	-3.82	
7527.00†	58.867	356.466	6819.96	654.32	1493.63	2345.43	1715008.89	14363057.15	39°33'7.4838"N	80°44'7.3525"W	2780.64	57.510	6.12	6.12	-0.37	Burkett: 7527' MD
7590.00†	62.721	356.247	6850.69	707.37	1548.50	2341.93	1715005.39	14363112.00	39°33'8.0262"N	80°44'7.3950"W	2807.58	56.527	6.12	6.12	-0.35	Tully: 7590' MD
7598.00	63.210	356.220	6854.33	714.25	1555.61	2341.46	1715004.93	14363119.10	39°33'8.0965"N	80°44'7.4008"W	2811.12	56.401	6.12	6.12	-0.33	
7693.00	69.610	353.630	6892.33	798.75	1642.27	2333.72	1714997.18	14363205.73	39°33'8.9532"N	80°44'7.4964"W	2853.65	54.865	7.18	6.74	-2.73	
7788.00	73.300	346.980	6922.57	887.60	1730.97	2318.51	1714981.98	14363294.39	39°33'9.8303"N	80°44'7.6872"W	2893.39	53.255	7.69	3.88	-7.00	
7810.00†	74.898	345.964	6928.60	908.66	1751.54	2313.56	1714977.03	14363314.95	39°33'10.0337"N	80°44'7.7496"W	2901.80	52.872	8.52	7.26	-4.62	Marcellus POE: 7810' MD



Actual Wellpath Report

Welder Unit 2H AWP Proj: 24240'

Page 5 of 13



REFERENCE WELLPATH IDENTIFICATION

Operator	ANTERO RESOURCES CORPORATION	Well	Welder Unit 2H
Field	Wetzel	API	47-103-03462-0000
Facility	Journeyman Pad	Wellbore	Welder Unit 2H AWB
Slot	Slot G		

WELLPATH DATA (265 stations)

MD (ft)	Inclination (°)	Azimuth (°)	TVD (ft)	Vert Sect (ft)	North (ft)	East (ft)	Grid East (US ft)	Grid North (US ft)	Latitude	Longitude	Closure Dist (ft)	Closure Dir (°)	DLS (°/100ft)	Build Rate (°/100ft)	Turn Rate (°/100ft)	Comments
7883.00	80.230	342.690	6944.32	979.80	1820.13	2294.29	1714957.77	14363383.52	39°33'10.7122"N	80°44'7.9931"W	2928.59	51.574	8.52	7.30	-4.48	
7978.00	89.750	340.230	6952.61	1074.32	1909.74	2264.22	1714927.71	14363473.10	39°33'11.5987"N	80°44'8.3736"W	2962.06	49.854	10.35	10.02	-2.59	
8072.00	89.450	339.890	6953.26	1168.31	1998.11	2232.16	1714895.67	14363561.42	39°33'12.4730"N	80°44'8.7795"W	2995.83	48.167	0.48	-0.32	-0.36	
8167.00	89.450	340.370	6954.18	1263.29	2087.45	2199.88	1714863.40	14363650.73	39°33'13.3569"N	80°44'9.1883"W	3032.64	46.502	0.51	0.00	0.51	
8262.00	92.460	336.660	6952.59	1358.15	2175.81	2165.10	1714828.63	14363739.06	39°33'14.2312"N	80°44'9.6290"W	3069.49	44.859	5.03	3.17	-3.91	
8356.00	89.140	338.630	6951.28	1451.95	2262.72	2129.36	1714792.90	14363825.93	39°33'15.0912"N	80°44'10.0821"W	3107.10	43.261	4.11	-3.53	2.10	
8451.00	89.420	340.120	6952.47	1546.89	2351.62	2095.90	1714759.46	14363914.80	39°33'15.9708"N	80°44'10.5059"W	3150.06	41.709	1.60	0.29	1.57	
8545.00	90.090	340.730	6952.88	1640.88	2440.19	2064.40	1714727.98	14364003.33	39°33'16.8470"N	80°44'10.9047"W	3196.29	40.231	0.96	0.71	0.65	
8640.00	89.940	340.520	6952.85	1735.88	2529.81	2032.89	1714696.47	14364092.91	39°33'17.7336"N	80°44'11.3037"W	3245.39	38.784	0.27	-0.16	-0.22	
8735.00	89.820	340.170	6953.05	1830.87	2619.27	2000.93	1714664.53	14364182.34	39°33'18.6188"N	80°44'11.7083"W	3296.11	37.377	0.39	-0.13	-0.37	
8829.00	89.910	340.240	6953.27	1924.86	2707.71	1969.10	1714632.71	14364270.75	39°33'19.4938"N	80°44'12.1114"W	3348.00	36.025	0.12	0.10	0.07	
8924.00	89.940	339.800	6953.40	2019.84	2797.00	1936.64	1714600.26	14364360.00	39°33'20.3771"N	80°44'12.5225"W	3402.02	34.699	0.46	0.03	-0.46	
9019.00	90.580	340.420	6952.97	2114.83	2886.33	1904.32	1714567.96	14364449.29	39°33'21.2610"N	80°44'12.9318"W	3457.94	33.416	0.94	0.67	0.65	
9114.00	89.910	340.530	6952.56	2209.82	2975.86	1872.57	1714536.22	14364538.80	39°33'22.1468"N	80°44'13.3338"W	3516.00	32.180	0.71	-0.71	0.12	
9208.00	89.850	340.530	6952.76	2303.81	3064.49	1841.24	1714504.90	14364627.38	39°33'23.0236"N	80°44'13.7305"W	3575.09	30.999	0.06	-0.06	0.00	
9303.00	90.250	340.290	6952.67	2398.81	3153.99	1809.39	1714473.06	14364716.85	39°33'23.9091"N	80°44'14.1338"W	3636.14	29.842	0.49	0.42	-0.25	
9397.00	90.460	340.200	6952.09	2492.79	3242.45	1777.61	1714441.30	14364805.28	39°33'24.7843"N	80°44'14.5361"W	3697.76	28.733	0.24	0.22	-0.10	
9492.00	90.950	340.300	6950.92	2587.77	3331.86	1745.52	1714409.21	14364894.65	39°33'25.6688"N	80°44'14.9426"W	3761.40	27.649	0.53	0.52	0.11	
9587.00	90.520	339.970	6949.70	2682.75	3421.20	1713.24	1714376.95	14364983.95	39°33'26.5527"N	80°44'15.3514"W	3826.20	26.600	0.57	-0.45	-0.35	
9681.00	89.080	341.280	6950.03	2776.74	3509.87	1682.05	1714345.78	14365072.59	39°33'27.4300"N	80°44'15.7462"W	3892.11	25.605	2.07	-1.53	1.39	
9776.00	90.150	341.540	6950.67	2871.74	3599.91	1651.77	1714315.51	14365162.59	39°33'28.3207"N	80°44'16.1295"W	3960.77	24.647	1.16	1.13	0.27	
9870.00	89.080	340.820	6951.30	2965.73	3688.88	1621.45	1714285.19	14365251.53	39°33'29.2009"N	80°44'16.5133"W	4029.51	23.728	1.37	-1.14	-0.77	
9965.00	88.980	340.870	6952.91	3060.72	3778.61	1590.28	1714254.04	14365341.22	39°33'30.0886"N	80°44'16.9079"W	4099.62	22.824	0.12	-0.11	0.05	
10059.00	89.050	341.300	6954.53	3154.71	3867.52	1559.81	1714223.58	14365430.10	39°33'30.9682"N	80°44'17.2936"W	4170.22	21.965	0.46	0.07	0.46	
10154.00	88.890	340.290	6956.23	3249.69	3957.22	1528.57	1714192.35	14365519.76	39°33'31.8556"N	80°44'17.6892"W	4242.18	21.120	1.08	-0.17	-1.06	
10249.00	88.980	340.590	6958.00	3344.66	4046.72	1496.77	1714160.57	14365609.23	39°33'32.7411"N	80°44'18.0919"W	4314.65	20.298	0.33	0.09	0.32	
10344.00	89.140	339.760	6959.56	3439.64	4136.08	1464.55	1714128.36	14365698.55	39°33'33.6252"N	80°44'18.4998"W	4387.71	19.499	0.89	0.17	-0.87	
10439.00	89.350	340.860	6960.81	3534.62	4225.51	1432.55	1714096.37	14365787.95	39°33'34.5100"N	80°44'18.9052"W	4461.74	18.728	1.18	0.22	1.16	
10534.00	89.750	341.010	6961.56	3629.61	4315.30	1401.52	1714065.35	14365877.70	39°33'35.3983"N	80°44'19.2980"W	4537.19	17.993	0.45	0.42	0.16	
10629.00	90.460	342.480	6961.38	3724.61	4405.51	1371.76	1714035.61	14365967.88	39°33'36.2907"N	80°44'19.6746"W	4614.14	17.295	1.72	0.75	1.55	



Actual Wellpath Report

Welder Unit 2H AWP Proj: 24240'

Page 6 of 13



REFERENCE WELLPATH IDENTIFICATION			
Operator	ANTERO RESOURCES CORPORATION	Well	Welder Unit 2H
Field	Wetzel	API	47-103-03462-0000
Facility	Journeyman Pad	Wellbore	Welder Unit 2H AWB
Slot	Slot G		

WELLPATH DATA (265 stations)																
MD (ft)	Inclination [°]	Azimuth [°]	TVD (ft)	Vert Sect (ft)	North (ft)	East (ft)	Grid East [US ft]	Grid North [US ft]	Latitude	Longitude	Closure Dist (ft)	Closure Dir [°]	DLS [°/100ft]	Build Rate [°/100ft]	Turn Rate [°/100ft]	Comments
10723.00	89.450	341.240	6961.45	3818.59	4494.84	1342.50	1714006.35	14366057.17	39°33'37.1744"N	80°44'20.0449"W	4691.04	16.630	1.70	-1.07	-1.32	
10818.00	90.250	340.610	6961.70	3913.59	4584.82	1311.45	1713975.32	14366146.92	39°33'38.0626"N	80°44'20.4380"W	4768.51	15.963	1.07	0.84	-0.66	
10913.00	90.650	342.270	6960.96	4008.58	4674.67	1281.21	1713945.10	14366236.93	39°33'38.9535"N	80°44'20.8207"W	4847.07	15.327	1.80	0.42	1.75	
11008.00	89.260	340.390	6961.03	4103.58	4764.67	1250.80	1713914.70	14366326.89	39°33'39.8438"N	80°44'21.2056"W	4928.11	14.709	2.46	-1.46	-1.98	
11103.00	89.450	340.530	6962.10	4198.56	4854.19	1219.03	1713882.94	14366416.38	39°33'40.7295"N	80°44'21.6080"W	5004.92	14.097	0.25	0.20	0.15	
11198.00	90.430	341.350	6962.20	4293.56	4943.98	1188.01	1713851.93	14366506.13	39°33'41.6178"N	80°44'22.0007"W	5084.71	13.512	1.35	1.03	0.86	
11292.00	89.720	341.770	6962.08	4387.56	5033.15	1158.28	1713822.21	14366595.27	39°33'42.5000"N	80°44'22.3771"W	5164.71	12.960	0.88	-0.76	0.45	
11387.00	89.420	341.270	6962.79	4482.55	5123.25	1128.17	1713792.11	14366685.33	39°33'43.3913"N	80°44'22.7582"W	5246.00	12.419	0.61	-0.32	-0.53	
11482.00	90.950	339.930	6962.48	4577.54	5212.85	1096.61	1713760.57	14366774.90	39°33'44.2777"N	80°44'23.1578"W	5326.95	11.880	2.14	1.61	-1.41	
11577.00	90.550	341.560	6961.24	4672.53	5302.53	1065.29	1713729.26	14366864.54	39°33'45.1649"N	80°44'23.5544"W	5408.48	11.360	1.77	-0.42	1.72	
11672.00	89.910	340.930	6960.86	4767.53	5392.48	1034.74	1713698.72	14366954.46	39°33'46.0548"N	80°44'23.9411"W	5490.86	10.862	0.95	-0.67	-0.66	
11766.00	89.850	341.200	6961.06	4861.53	5481.40	1004.24	1713668.23	14367043.33	39°33'46.9344"N	80°44'24.3273"W	5572.63	10.382	0.29	-0.06	0.29	
11861.00	89.630	338.400	6961.49	4956.49	5570.54	971.44	1713635.45	14367132.45	39°33'47.8164"N	80°44'24.7428"W	5654.61	9.892	2.96	-0.23	-2.95	
11956.00	89.690	337.040	6962.05	5051.32	5658.45	935.43	1713599.44	14367220.32	39°33'48.6862"N	80°44'25.1994"W	5735.25	9.387	1.43	0.06	-1.43	
12050.00	89.380	340.620	6962.81	5145.23	5746.09	901.49	1713565.52	14367307.92	39°33'49.5533"N	80°44'25.6295"W	5818.37	8.916	3.82	-0.33	3.81	
12145.00	89.600	340.670	6963.66	5240.22	5835.71	870.00	1713534.05	14367397.51	39°33'50.4400"N	80°44'26.0282"W	5900.21	8.479	0.24	0.23	0.05	
12240.00	89.720	339.900	6964.22	5335.21	5925.14	837.95	1713502.01	14367486.91	39°33'51.3248"N	80°44'26.4341"W	5984.10	8.050	0.82	0.13	-0.81	
12335.00	89.850	342.370	6964.58	5430.20	6015.03	807.24	1713471.31	14367576.76	39°33'52.2141"N	80°44'26.8230"W	6068.96	7.644	2.60	0.14	2.60	
12429.00	89.450	341.160	6965.15	5524.19	6104.31	777.83	1713441.91	14367666.00	39°33'53.0972"N	80°44'27.1953"W	6153.66	7.262	1.36	-0.43	-1.29	
12524.00	89.290	341.340	6966.20	5619.18	6194.26	747.29	1713411.39	14367755.92	39°33'53.9871"N	80°44'27.5819"W	6239.17	6.879	0.25	-0.17	0.19	
12619.00	89.230	342.490	6967.43	5714.17	6284.56	717.80	1713381.91	14367846.18	39°33'54.8804"N	80°44'27.9551"W	6325.42	6.516	1.21	-0.06	1.21	
12713.00	89.020	342.390	6968.86	5808.13	6374.17	689.45	1713353.56	14367935.75	39°33'55.7668"N	80°44'28.3138"W	6411.34	6.173	0.25	-0.22	-0.11	
12808.00	88.740	342.370	6970.72	5903.09	6464.69	660.70	1713324.83	14368026.24	39°33'56.6623"N	80°44'28.6776"W	6498.37	5.835	0.30	-0.29	-0.02	
12902.00	88.620	342.020	6972.88	5997.05	6554.17	631.96	1713296.10	14368115.68	39°33'57.5474"N	80°44'29.0413"W	6584.56	5.508	0.39	-0.13	-0.37	
12997.00	88.550	341.690	6975.23	6092.01	6644.41	602.39	1713266.54	14368205.89	39°33'58.4402"N	80°44'29.4156"W	6671.66	5.180	0.35	-0.07	-0.35	
13092.00	88.770	342.280	6977.45	6186.97	6734.73	573.01	1713237.18	14368296.17	39°33'59.3337"N	80°44'29.7873"W	6759.06	4.863	0.66	0.23	0.62	
13187.00	88.860	342.090	6979.42	6281.94	6825.16	543.95	1713208.13	14368386.56	39°34'0.2282"N	80°44'30.1551"W	6846.80	4.557	0.22	0.09	-0.20	
13281.00	89.110	342.470	6981.08	6375.90	6914.68	515.35	1713179.53	14368476.05	39°34'1.1138"N	80°44'30.5170"W	6933.86	4.262	0.48	0.27	0.40	
13376.00	88.680	341.880	6982.91	6470.87	7005.11	486.27	1713150.47	14368566.44	39°34'2.0083"N	80°44'30.8850"W	7021.96	3.971	0.77	-0.45	-0.62	
13471.00	88.280	340.770	6985.43	6565.83	7095.07	455.87	1713120.08	14368656.37	39°34'2.8983"N	80°44'31.2700"W	7109.70	3.676	1.24	-0.42	-1.17	



Actual Wellpath Report

Welder Unit 2H AWP Proj: 24240'

Page 7 of 13



REFERENCE WELLPATH IDENTIFICATION				
Operator	ANTERO RESOURCES CORPORATION		Well	Welder Unit 2H
Field	Wetzel		API	47-103-03462-0000
Facility	Journeyman Pad		Wellbore	Welder Unit 2H AWB
Slot	Slot G			

WELLPATH DATA (265 stations)																
MD (ft)	Inclination (°)	Azimuth (°)	TVD (ft)	Vert Sect (ft)	North (ft)	East (ft)	Grid East (US ft)	Grid North (US ft)	Latitude	Longitude	Closure Dist (ft)	Closure Dir (°)	DLS (°/100ft)	Build Rate (°/100ft)	Turn Rate (°/100ft)	Comments
13566.00	90.980	341.920	6986.05	6660.82	7185.07	425.48	1713089.70	14368746.33	39°34'3.7886"N	80°44'31.6546"W	7197.65	3.389	3.09	2.84	1.21	
13661.00	90.180	342.010	6985.08	6755.80	7275.39	396.07	1713060.31	14368836.62	39°34'4.6822"N	80°44'32.0269"W	7286.17	3.116	0.85	-0.84	0.09	
13755.00	90.180	341.710	6984.79	6849.79	7364.72	366.81	1713031.05	14368925.92	39°34'5.5659"N	80°44'32.3973"W	7373.85	2.851	0.32	0.00	-0.32	
13850.00	89.910	341.190	6984.71	6944.79	7454.79	336.58	1713000.84	14369015.94	39°34'6.4568"N	80°44'32.7799"W	7462.38	2.585	0.62	-0.28	-0.55	
13945.00	89.780	341.500	6984.97	7039.79	7544.79	306.20	1712970.47	14369105.92	39°34'7.3473"N	80°44'33.1647"W	7551.01	2.324	0.35	-0.14	0.33	
14039.00	89.910	342.050	6985.23	7133.78	7634.08	276.80	1712941.08	14369195.16	39°34'8.2305"N	80°44'33.5368"W	7639.09	2.077	0.60	0.14	0.59	
14134.00	89.690	341.650	6985.56	7228.78	7724.35	247.21	1712911.50	14369285.40	39°34'9.1235"N	80°44'33.9114"W	7728.31	1.833	0.48	-0.23	-0.42	
14228.00	89.690	341.360	6986.07	7322.77	7813.49	217.39	1712881.69	14369374.51	39°34'10.0054"N	80°44'34.2889"W	7816.52	1.594	0.31	0.00	-0.31	
14323.00	89.750	341.360	6986.53	7417.77	7903.51	187.02	1712851.34	14369464.49	39°34'10.8959"N	80°44'34.6733"W	7905.72	1.356	0.06	0.06	0.00	
14418.00	90.250	341.230	6986.53	7512.77	7993.49	156.56	1712820.89	14369554.44	39°34'11.7861"N	80°44'35.0591"W	7995.02	1.122	0.54	0.53	-0.14	
14512.00	90.150	341.800	6986.20	7606.77	8082.64	126.76	1712791.09	14369643.55	39°34'12.6680"N	80°44'35.4364"W	8083.64	0.898	0.62	-0.11	0.61	
14607.00	89.820	342.150	6986.23	7701.75	8172.98	97.36	1712761.71	14369733.85	39°34'13.5616"N	80°44'35.8085"W	8173.56	0.682	0.51	-0.35	0.37	
14701.00	89.970	341.990	6986.40	7795.74	8262.41	68.42	1712732.78	14369823.25	39°34'14.4463"N	80°44'36.1748"W	8262.70	0.474	0.23	0.16	-0.17	
14796.00	90.060	342.810	6986.37	7890.72	8352.97	39.70	1712704.07	14369913.77	39°34'15.3421"N	80°44'36.5383"W	8353.06	0.272	0.87	0.09	0.86	
14891.00	89.380	341.380	6986.84	7985.70	8443.36	10.49	1712674.88	14370004.13	39°34'16.2363"N	80°44'36.9079"W	8443.37	0.071	1.67	-0.72	-1.51	
14985.00	90.250	341.860	6987.14	8079.69	8532.56	-19.15	1712645.25	14370093.29	39°34'17.1188"N	80°44'37.2832"W	8532.58	359.871	1.06	0.93	0.51	
15080.00	90.120	341.480	6986.84	8174.69	8622.74	-49.03	1712615.38	14370183.44	39°34'18.0109"N	80°44'37.6614"W	8622.88	359.674	0.42	-0.14	-0.40	
15174.00	90.430	341.990	6986.38	8268.68	8712.01	-78.49	1712585.94	14370272.67	39°34'18.8939"N	80°44'38.0343"W	8712.36	359.484	0.63	0.33	0.54	
15269.00	89.940	341.810	6986.08	8363.67	8802.30	-108.00	1712556.43	14370362.93	39°34'19.7872"N	80°44'38.4080"W	8802.97	359.297	0.55	-0.52	-0.19	
15363.00	89.940	342.070	6986.18	8457.66	8891.67	-137.14	1712527.30	14370452.26	39°34'20.6712"N	80°44'38.7768"W	8892.73	359.116	0.28	0.00	0.28	
15458.00	90.060	342.320	6986.18	8552.65	8982.12	-166.19	1712498.27	14370542.67	39°34'21.5660"N	80°44'39.1445"W	8983.66	358.940	0.29	0.13	0.26	
15552.00	90.120	341.470	6986.03	8646.64	9071.47	-195.40	1712469.07	14370631.98	39°34'22.4498"N	80°44'39.5143"W	9073.57	358.766	0.91	0.06	-0.90	
15647.00	89.750	340.050	6986.14	8741.63	9161.16	-226.70	1712437.78	14370721.64	39°34'23.3371"N	80°44'39.9108"W	9163.96	358.582	1.54	-0.39	-1.49	
15742.00	90.000	343.160	6986.34	8836.62	9251.29	-256.68	1712407.81	14370811.74	39°34'24.2288"N	80°44'40.2903"W	9254.85	358.411	3.28	0.26	3.27	
15836.00	90.310	343.790	6986.09	8930.54	9341.41	-283.42	1712381.09	14370901.82	39°34'25.1202"N	80°44'40.6285"W	9345.71	358.262	0.75	0.33	0.67	
15930.00	89.820	341.880	6985.98	9024.49	9431.22	-311.16	1712353.36	14370991.59	39°34'26.0085"N	80°44'40.9795"W	9436.35	358.110	2.10	-0.52	-2.03	
16025.00	91.200	342.160	6985.14	9119.47	9521.57	-340.48	1712324.05	14371081.91	39°34'26.9024"N	80°44'41.3506"W	9527.66	357.952	1.48	1.45	0.29	
16120.00	90.430	341.620	6983.79	9214.45	9611.86	-370.01	1712294.53	14371172.16	39°34'27.7955"N	80°44'41.7244"W	9618.98	357.795	0.99	-0.81	-0.57	
16214.00	90.650	340.500	6982.90	9308.45	9700.76	-400.51	1712264.03	14371261.03	39°34'28.6750"N	80°44'42.1108"W	9709.03	357.636	1.21	0.23	-1.19	
16309.00	90.400	340.310	6982.03	9403.43	9790.26	-432.37	1712232.19	14371350.49	39°34'29.5604"N	80°44'42.5144"W	9799.80	357.471	0.33	-0.26	-0.20	



Actual Wellpath Report

Welder Unit 2H AWP Proj: 24240'

Page 8 of 13



REFERENCE WELLPATH IDENTIFICATION			
Operator	ANTERO RESOURCES CORPORATION	Well	Welder Unit 2H
Field	Wetzel	API	47-103-03462-0000
Facility	Journeyman Pad	Wellbore	Welder Unit 2H AWB
Slot	Slot G		

WELLPATH DATA (265 stations)																
MD (ft)	Inclination (°)	Azimuth (°)	TVD (ft)	Vert Sect (ft)	North (ft)	East (ft)	Grid East (US ft)	Grid North (US ft)	Latitude	Longitude	Closure Dist (ft)	Closure Dir (°)	DLS (°/100ft)	Build Rate (°/100ft)	Turn Rate (°/100ft)	Comments
16403.00	90.490	340.170	6981.30	9497.42	9878.72	-464.15	1712200.42	14371438.92	39°34'30.4356"N	80°44'42.9171"W	9889.62	357.310	0.18	0.10	-0.15	
16498.00	91.080	340.600	6980.00	9592.40	9968.20	-496.04	1712168.55	14371528.36	39°34'31.3208"N	80°44'43.3210"W	9980.53	357.151	0.77	0.62	0.45	
16592.00	91.050	340.860	6978.25	9686.38	10056.91	-527.06	1712137.54	14371617.04	39°34'32.1985"N	80°44'43.7139"W	10070.72	357.000	0.28	-0.03	0.28	
16687.00	90.770	340.110	6976.74	9781.37	10146.45	-558.79	1712105.82	14371706.54	39°34'33.0842"N	80°44'44.1159"W	10161.82	356.848	0.84	-0.29	-0.79	
16781.00	90.860	340.600	6975.40	9875.35	10234.96	-590.39	1712074.24	14371795.02	39°34'33.9599"N	80°44'44.5163"W	10251.98	356.699	0.53	0.10	0.52	
16876.00	90.400	340.040	6974.36	9970.33	10324.41	-622.38	1712042.26	14371884.43	39°34'34.8448"N	80°44'44.9216"W	10343.15	356.550	0.76	-0.48	-0.59	
16971.00	91.110	341.330	6973.11	10065.32	10414.05	-653.80	1712010.85	14371974.04	39°34'35.7317"N	80°44'45.3196"W	10434.55	356.408	1.55	0.75	1.36	
17065.00	90.520	340.280	6971.77	10159.31	10502.82	-684.70	1711979.96	14372062.77	39°34'36.6098"N	80°44'45.7110"W	10525.11	356.270	1.28	-0.63	-1.12	
17159.00	90.490	340.310	6970.94	10253.29	10591.31	-716.39	1711948.28	14372151.22	39°34'37.4853"N	80°44'46.1126"W	10615.51	356.130	0.05	-0.03	0.03	
17254.00	90.550	340.680	6970.08	10348.28	10680.85	-748.11	1711916.58	14372240.73	39°34'38.3711"N	80°44'46.5144"W	10707.02	355.993	0.39	0.06	0.39	
17349.00	90.860	339.950	6968.91	10443.27	10770.29	-780.11	1711884.59	14372330.14	39°34'39.2560"N	80°44'46.9198"W	10798.51	355.857	0.83	0.33	-0.77	
17443.00	90.860	340.760	6967.50	10537.25	10858.81	-811.71	1711853.01	14372418.62	39°34'40.1317"N	80°44'47.3202"W	10889.11	355.725	0.86	0.00	0.86	
17538.00	90.520	341.180	6966.36	10632.24	10948.61	-842.68	1711822.04	14372508.39	39°34'41.0201"N	80°44'47.7125"W	10980.99	355.599	0.57	-0.36	0.44	
17633.00	90.490	340.340	6965.52	10727.23	11038.30	-873.98	1711790.75	14372598.04	39°34'41.9074"N	80°44'48.1091"W	11072.85	355.473	0.88	-0.03	-0.88	
17728.00	90.370	339.650	6964.81	10822.21	11127.57	-906.48	1711758.27	14372687.27	39°34'42.7905"N	80°44'48.5209"W	11164.43	355.343	0.74	-0.13	-0.73	
17822.00	90.770	341.100	6963.87	10916.20	11216.10	-938.05	1711726.71	14372775.77	39°34'43.6664"N	80°44'48.9209"W	11255.26	355.219	1.60	0.43	1.54	
17917.00	90.740	341.460	6962.62	11011.19	11306.07	-968.54	1711696.24	14372865.70	39°34'44.5564"N	80°44'49.3070"W	11347.47	355.104	0.38	-0.03	0.38	
18011.00	90.280	340.570	6961.78	11105.18	11394.95	-999.12	1711665.67	14372954.54	39°34'45.4357"N	80°44'49.6943"W	11438.66	354.989	1.07	-0.49	-0.95	
18106.00	90.860	340.630	6960.84	11200.17	11484.55	-1030.67	1711634.13	14373044.11	39°34'46.3221"N	80°44'50.0941"W	11530.70	354.872	0.61	0.61	0.06	
18201.00	90.740	340.610	6959.51	11295.16	11574.16	-1062.19	1711602.62	14373133.68	39°34'47.2086"N	80°44'50.4934"W	11622.79	354.757	0.13	-0.13	-0.02	
18295.00	90.370	340.730	6958.60	11389.15	11662.85	-1093.30	1711571.52	14373222.34	39°34'48.0861"N	80°44'50.8876"W	11713.99	354.645	0.41	-0.39	0.13	
18390.00	90.620	340.840	6957.78	11484.15	11752.56	-1124.57	1711540.27	14373312.01	39°34'48.9735"N	80°44'51.2837"W	11806.24	354.534	0.29	0.26	0.12	
18485.00	90.620	341.070	6956.75	11579.14	11842.35	-1155.57	1711509.28	14373401.77	39°34'49.8618"N	80°44'51.6764"W	11898.60	354.427	0.24	0.00	0.24	
18580.00	90.860	340.810	6955.53	11674.13	11932.14	-1186.59	1711478.27	14373491.52	39°34'50.7500"N	80°44'52.0693"W	11990.99	354.321	0.37	0.25	-0.27	
18674.00	90.860	340.910	6954.11	11768.12	12020.93	-1217.40	1711447.47	14373580.28	39°34'51.6284"N	80°44'52.4597"W	12082.42	354.217	0.11	0.00	0.11	
18769.00	90.650	340.830	6952.86	11863.11	12110.68	-1248.53	1711416.35	14373669.99	39°34'52.5163"N	80°44'52.8541"W	12174.86	354.114	0.24	-0.22	-0.08	
18864.00	90.710	341.130	6951.74	11958.10	12200.48	-1279.49	1711385.41	14373759.76	39°34'53.4047"N	80°44'53.2463"W	12267.39	354.013	0.32	0.06	0.32	
18959.00	90.650	340.920	6950.61	12053.10	12290.31	-1310.38	1711354.53	14373849.56	39°34'54.2934"N	80°44'53.6375"W	12359.97	353.914	0.23	-0.06	-0.22	
19054.00	90.340	340.900	6949.79	12148.09	12380.09	-1341.45	1711323.47	14373939.29	39°34'55.1815"N	80°44'54.0311"W	12452.55	353.816	0.33	-0.33	-0.02	
19148.00	90.740	340.460	6948.90	12242.09	12468.79	-1372.55	1711292.39	14374027.96	39°34'56.0590"N	80°44'54.4251"W	12544.11	353.718	0.63	0.43	-0.47	



Actual Wellpath Report

Welder Unit 2H AWP Proj: 24240'

Page 9 of 13



REFERENCE WELLPATH IDENTIFICATION			
Operator	ANTERO RESOURCES CORPORATION	Well	Welder Unit 2H
Field	Wetzel	API	47-103-03462-0000
Facility	Journeyman Pad	Wellbore	Welder Unit 2H AWB
Slot	Slot G		

WELLPATH DATA (265 stations)																
MD (ft)	Inclination (°)	Azimuth (°)	TVD (ft)	Vert Sect (ft)	North (ft)	East (ft)	Grid East (US ft)	Grid North (US ft)	Latitude	Longitude	Closure Dist (ft)	Closure Dir (°)	DLS (°/100ft)	Build Rate (°/100ft)	Turn Rate (°/100ft)	Comments
19243.00	90.740	340.960	6947.67	12337.08	12558.45	-1403.93	1711261.02	14374117.58	39°34'56.9460"N	80°44'54.8227"W	12636.68	353.621	0.53	0.00	0.53	
19338.00	90.620	340.860	6946.55	12432.07	12648.22	-1434.99	1711229.96	14374207.32	39°34'57.8340"N	80°44'55.2163"W	12729.36	353.527	0.16	-0.13	-0.11	
19432.00	90.740	340.960	6945.43	12526.06	12737.04	-1465.73	1711199.24	14374296.11	39°34'58.7128"N	80°44'55.6057"W	12821.10	353.435	0.17	0.13	0.11	
19527.00	90.740	340.650	6944.20	12621.05	12826.75	-1496.97	1711168.02	14374385.78	39°34'59.6002"N	80°44'56.0014"W	12913.81	353.343	0.33	0.00	-0.33	
19622.00	90.770	340.720	6942.95	12716.04	12916.40	-1528.39	1711136.61	14374475.39	39°35'0.4871"N	80°44'56.3995"W	13006.51	353.252	0.08	0.03	0.07	
19716.00	90.710	340.680	6941.74	12810.03	13005.11	-1559.45	1711105.56	14374564.07	39°35'1.3647"N	80°44'56.7931"W	13098.27	353.162	0.08	-0.06	-0.04	
19811.00	90.400	340.760	6940.82	12905.02	13094.77	-1590.82	1711074.20	14374653.70	39°35'2.2518"N	80°44'57.1906"W	13191.05	353.073	0.34	-0.33	0.08	
19906.00	90.710	340.620	6939.90	13000.02	13184.43	-1622.23	1711042.80	14374743.31	39°35'3.1387"N	80°44'57.5886"W	13283.85	352.986	0.36	0.33	-0.15	
20001.00	90.460	340.510	6938.93	13095.01	13274.01	-1653.84	1711011.21	14374832.86	39°35'4.0249"N	80°44'57.9891"W	13376.64	352.898	0.29	-0.26	-0.12	
20095.00	90.920	340.820	6937.80	13189.00	13362.70	-1684.96	1710980.10	14374921.52	39°35'4.9023"N	80°44'58.3834"W	13468.51	352.813	0.59	0.49	0.33	
20190.00	90.550	340.400	6936.58	13283.98	13452.30	-1716.50	1710948.57	14375011.09	39°35'5.7887"N	80°44'58.7830"W	13561.37	352.728	0.59	-0.39	-0.44	
20284.00	90.490	340.800	6935.72	13377.98	13540.96	-1747.72	1710917.36	14375099.71	39°35'6.6658"N	80°44'59.1786"W	13653.28	352.646	0.43	-0.06	0.43	
20379.00	90.680	340.900	6934.75	13472.97	13630.70	-1778.88	1710886.21	14375189.41	39°35'7.5536"N	80°44'59.5735"W	13746.29	352.565	0.23	0.20	0.11	
20473.00	90.620	340.860	6933.69	13566.96	13719.51	-1809.67	1710855.44	14375278.19	39°35'8.4321"N	80°44'59.9635"W	13838.35	352.486	0.08	-0.06	-0.04	
20567.00	90.580	340.430	6932.70	13660.95	13808.19	-1840.82	1710824.30	14375366.83	39°35'9.3095"N	80°45'0.3583"W	13930.35	352.406	0.46	-0.04	-0.46	
20662.00	90.830	340.310	6931.53	13755.94	13897.86	-1872.73	1710792.40	14375456.27	39°35'10.1946"N	80°45'0.7627"W	14023.27	352.326	0.29	0.26	-0.13	
20756.00	90.650	340.840	6930.32	13849.93	13986.31	-1903.99	1710761.15	14375544.88	39°35'11.0715"N	80°45'1.1588"W	14115.31	352.248	0.60	-0.19	0.56	
20851.00	90.580	340.700	6929.30	13944.92	14076.00	-1935.28	1710729.88	14375634.54	39°35'11.9588"N	80°45'1.5553"W	14208.42	352.172	0.16	-0.07	-0.15	
20945.00	90.620	340.950	6928.32	14038.91	14164.78	-1966.15	1710699.02	14375723.28	39°35'12.8371"N	80°45'1.9464"W	14300.58	352.098	0.27	0.04	0.27	
21040.00	90.490	340.670	6927.40	14133.91	14254.50	-1997.38	1710667.80	14375812.96	39°35'13.7247"N	80°45'2.3421"W	14393.75	352.024	0.32	-0.14	-0.29	
21134.00	90.620	340.530	6926.49	14227.90	14343.16	-2028.60	1710636.60	14375901.58	39°35'14.6017"N	80°45'2.7377"W	14485.90	351.950	0.20	0.14	-0.15	
21229.00	90.370	339.810	6925.67	14322.88	14432.52	-2060.82	1710604.38	14375990.91	39°35'15.4858"N	80°45'3.1462"W	14578.91	351.874	0.80	-0.26	-0.76	
21323.00	90.490	340.770	6924.96	14416.87	14521.01	-2092.52	1710572.69	14376079.37	39°35'16.3612"N	80°45'3.5480"W	14671.00	351.800	1.03	0.13	1.02	
21418.00	90.150	340.790	6924.43	14511.86	14610.71	-2123.80	1710541.43	14376169.03	39°35'17.2486"N	80°45'3.9442"W	14764.26	351.729	0.36	-0.36	0.02	
21512.00	90.150	340.840	6924.18	14605.86	14699.49	-2154.69	1710510.56	14376257.78	39°35'18.1269"N	80°45'4.3356"W	14856.57	351.661	0.05	0.00	0.05	
21607.00	90.180	340.670	6923.91	14700.86	14789.18	-2186.00	1710479.25	14376347.43	39°35'19.0142"N	80°45'4.7324"W	14949.86	351.592	0.18	0.03	-0.18	
21701.00	89.940	340.940	6923.81	14794.86	14877.95	-2216.91	1710448.36	14376436.17	39°35'19.8924"N	80°45'5.1240"W	15042.21	351.525	0.38	-0.26	0.29	
21796.00	90.030	340.970	6923.84	14889.86	14967.75	-2247.91	1710417.37	14376525.94	39°35'20.7808"N	80°45'5.5168"W	15135.61	351.459	0.10	0.09	0.03	
21891.00	89.780	340.640	6923.99	14984.86	15057.47	-2279.14	1710386.15	14376615.62	39°35'21.6683"N	80°45'5.9126"W	15228.98	351.393	0.44	-0.26	-0.35	
21985.00	89.820	340.470	6924.32	15078.85	15146.11	-2310.43	1710354.87	14376704.22	39°35'22.5452"N	80°45'6.3092"W	15321.32	351.327	0.19	0.04	-0.18	



Actual Wellpath Report

Welder Unit 2H AWP Proj: 24240'

Page 10 of 13



REFERENCE WELLPATH IDENTIFICATION				
Operator	ANTERO RESOURCES CORPORATION		Well	Welder Unit 2H
Field	Wetzel		API	47-103-03462-0000
Facility	Journeyman Pad		Wellbore	Welder Unit 2H AWB
Slot	Slot G			

WELLPATH DATA (265 stations) † = interpolated, ‡ = extrapolated station																
MD	Inclination	Azimuth	TVD	Vert Sect	North	East	Grid East	Grid North	Latitude	Longitude	Closure Dist	Closure Dir	DLS	Build Rate	Turn Rate	Comments
[ft]	[°]	[°]	[ft]	[ft]	[ft]	[ft]	[US ft]	[US ft]			[ft]	[°]	["/100ft]	["/100ft]	["/100ft]	
22080.00	90.060	340.620	6924.42	15173.85	15235.69	-2342.07	1710323.24	14376793.76	39°35'23.4314"N	80°45'6.7102"W	15414.65	351.261	0.30	0.25	0.16	
22175.00	89.820	340.690	6924.52	15268.84	15325.32	-2373.54	1710291.79	14376883.36	39°35'24.3181"N	80°45'7.1090"W	15508.04	351.196	0.26	-0.25	0.07	
22269.00	89.880	341.040	6924.77	15362.84	15414.13	-2404.36	1710260.99	14376972.13	39°35'25.1966"N	80°45'7.4995"W	15600.52	351.134	0.38	0.06	0.37	
22364.00	90.090	340.980	6924.79	15457.84	15503.96	-2435.27	1710230.09	14377061.93	39°35'26.0853"N	80°45'7.8912"W	15694.05	351.073	0.23	0.22	-0.06	
22459.00	89.970	340.730	6924.74	15552.84	15593.70	-2466.43	1710198.94	14377151.64	39°35'26.9731"N	80°45'8.2860"W	15787.55	351.012	0.29	-0.13	-0.26	
22554.00	89.910	340.620	6924.84	15647.84	15683.35	-2497.86	1710167.52	14377241.25	39°35'27.8599"N	80°45'8.6844"W	15881.02	350.951	0.13	-0.06	-0.12	
22648.00	90.310	340.990	6924.66	15741.84	15772.12	-2528.77	1710136.62	14377329.99	39°35'28.7382"N	80°45'9.0760"W	15973.56	350.891	0.58	0.43	0.39	
22743.00	89.910	340.680	6924.48	15836.83	15861.86	-2559.96	1710105.45	14377419.69	39°35'29.6259"N	80°45'9.4712"W	16067.11	350.832	0.53	-0.42	-0.33	
22838.00	89.970	340.710	6924.58	15931.83	15951.52	-2591.36	1710074.05	14377509.31	39°35'30.5128"N	80°45'9.8693"W	16160.63	350.773	0.07	0.06	0.03	
22932.00	90.030	340.670	6924.58	16025.83	16040.23	-2622.45	1710042.98	14377597.99	39°35'31.3904"N	80°45'10.2632"W	16253.19	350.715	0.08	0.06	-0.04	
23027.00	89.970	340.540	6924.58	16120.82	16129.84	-2653.99	1710011.45	14377687.56	39°35'32.2769"N	80°45'10.6630"W	16346.72	350.656	0.15	-0.06	-0.14	
23121.00	89.910	340.720	6924.68	16214.82	16218.52	-2685.17	1709980.28	14377776.20	39°35'33.1542"N	80°45'11.0582"W	16439.30	350.599	0.20	-0.06	0.19	
23216.00	90.030	340.760	6924.73	16309.82	16308.20	-2716.51	1709948.96	14377865.85	39°35'34.0414"N	80°45'11.4553"W	16532.90	350.543	0.13	0.13	0.04	
23310.00	89.970	341.730	6924.73	16403.82	16397.21	-2746.73	1709918.75	14377954.82	39°35'34.9219"N	80°45'11.8382"W	16625.67	350.491	1.03	-0.06	1.03	
23405.00	89.910	341.610	6924.83	16498.81	16487.39	-2776.61	1709888.88	14378044.97	39°35'35.8139"N	80°45'12.2167"W	16719.55	350.441	0.14	-0.06	-0.13	
23500.00	89.780	341.740	6925.08	16593.81	16577.57	-2806.47	1709859.03	14378135.11	39°35'36.7060"N	80°45'12.5951"W	16813.45	350.391	0.19	-0.14	0.14	
23595.00	89.880	341.600	6925.36	16688.80	16667.75	-2836.35	1709829.16	14378225.26	39°35'37.5981"N	80°45'12.9736"W	16907.36	350.342	0.18	0.11	-0.15	
23689.00	89.750	341.840	6925.67	16782.80	16757.00	-2865.84	1709799.69	14378314.48	39°35'38.4810"N	80°45'13.3471"W	17000.30	350.295	0.29	-0.14	0.26	
23783.00	89.970	341.300	6925.90	16876.79	16846.18	-2895.55	1709769.98	14378403.62	39°35'39.3632"N	80°45'13.7235"W	17093.22	350.247	0.62	0.23	-0.57	
23878.00	89.970	341.840	6925.95	16971.79	16936.31	-2925.59	1709739.96	14378493.71	39°35'40.2548"N	80°45'14.1040"W	17187.14	350.199	0.57	0.00	0.57	
23973.00	90.340	341.730	6925.69	17066.78	17026.55	-2955.28	1709710.28	14378583.92	39°35'41.1474"N	80°45'14.4802"W	17281.12	350.153	0.41	0.39	-0.12	
24067.00	90.120	341.870	6925.31	17160.78	17115.85	-2984.64	1709680.93	14378673.18	39°35'42.0307"N	80°45'14.8521"W	17374.13	350.108	0.28	-0.23	0.15	
24161.00	90.280	341.610	6924.98	17254.77	17205.11	-3014.09	1709651.49	14378762.41	39°35'42.9138"N	80°45'15.2252"W	17467.13	350.063	0.32	0.17	-0.28	
24215.00	90.280	341.870	6924.72	17308.77	17256.39	-3031.01	1709634.58	14378813.67	39°35'43.4210"N	80°45'15.4396"W	17520.56	350.038	0.48	0.00	0.48	
24240.00‡	90.280	341.870	6924.60	17333.76	17280.15	-3038.79	1709626.80	14378837.42	39°35'43.6560"N	80°45'15.5381"W	17545.31	350.026	0.00	0.00	0.00	Projected MD at TD: 24240'



Actual Wellpath Report

Welder Unit 2H AWP Proj: 24240'

Page 11 of 13



REFERENCE WELLPATH IDENTIFICATION

Operator	ANTERO RESOURCES CORPORATION	Well	Welder Unit 2H
Field	Wetzel	API	47-103-03462-0000
Facility	Journeyman Pad	Wellbore	Welder Unit 2H AWB
Slot	Slot G		

HOLE & CASING SECTIONS - Ref Wellbore: Welder Unit 2H AWB Ref Wellpath: Welder Unit 2H AWP Proj: 24240'

String/Diameter	Start MD [ft]	End MD [ft]	Interval [ft]	Start TVD [ft]	End TVD [ft]	Start N/S [ft]	Start E/W [ft]	End N/S [ft]	End E/W [ft]
20in Conductor	30.00	130.00	100.00	30.00	130.00	0.00	0.00	0.05	-0.21
17.5in Open Hole	130.00	367.00	237.00	130.00	367.00	0.05	-0.21	-0.50	-0.70
13.375in Casing Surface	30.00	347.00	317.00	30.00	347.00	0.00	0.00	-0.31	-0.68
12.25in Open Hole	367.00	2707.00	2340.00	367.00	2562.95	-0.50	-0.70	326.99	639.92
9.625in Casing Intermediate	30.00	2677.00	2647.00	30.00	2535.51	0.00	0.00	320.84	629.48
8.75in Open Hole	2707.00	6797.00	4090.00	2562.95	6241.09	326.99	639.92	1108.08	2240.23
8.5in Open Hole	6797.00	24240.00	17443.00	6241.09	6924.60	1108.08	2240.23	17280.15	-3038.79
5.5in Casing Production	30.00	24220.00	24190.00	30.00	6924.70	0.00	0.00	17261.14	-3032.57

TARGETS

Name	TVD [ft]	North [ft]	East [ft]	Grid East [US ft]	Grid North [US ft]	Latitude	Longitude	Shape
Welder Unit 2H POE Rev-2	6929.00	1705.70	2300.41	1714963.89	14363269.13	39°33'9.5810"N	80°44'7.9192"W	point
Welder Unit 2H BHL Rev-2	6956.00	17291.81	-3028.59	1709637.00	14378849.07	39°35'43.7710"N	80°45'15.4074"W	point
Welder Unit 2H LP Rev-2	6956.00	1890.02	2237.39	1714900.90	14363453.38	39°33'11.4045"N	80°44'8.7168"W	point
Welder Unit 2H 50' L/R Hard Line	7250.00	9498.75	-364.09	1712300.45	14371059.10	39°34'26.6775"N	80°44'41.6530"W	rectangle
2D Rectangle 16472 x 100.								



Actual Wellpath Report

Welder Unit 2H AWP Proj: 24240'

Page 12 of 13



REFERENCE WELLPATH IDENTIFICATION

Operator	ANTERO RESOURCES CORPORATION	Well	Welder Unit 2H
Field	Wetzel	API	47-103-03462-0000
Facility	Journeyman Pad	Wellbore	Welder Unit 2H AWB
Slot	Slot G		

WELLPATH COMPOSITION - Ref Wellbore: Welder Unit 2H AWB Ref Wellpath: Welder Unit 2H AWP Proj: 24240'

Start MD [ft]	End MD [ft]	Positional Uncertainty Model	Log Name/Comment	Wellbore	Survey Date
30.00	290.00	Gyrodatta 2015 - GC+VMR+DPIPE	01_Gyrodatta MS Gyro <17-1/2"> (100'-290')	Welder Unit 2H AWB	28/Dec/2021
290.00	2634.00	BH NaviTrak (2019) (Axial Corr+HRGM)	02_APS EM <12-1/4"> (290')(412'-2634')	Welder Unit 2H AWB	28/Dec/2021
2634.00	6734.00	BH NaviTrak (2019) (Axial Corr+HRGM)	03_APS EM <8-3/4"> (2634')(2757'-6734')	Welder Unit 2H AWB	15/Mar/2022
6734.00	24240.00	BH AutoTrak Curve/eXpress (2019) (HRGM, Short spacing)	04_BH AT Curve <8-1/2"> (6734')(6778'-24215')	Welder Unit 2H AWB	15/Mar/2022



Actual Wellpath Report

Welder Unit 2H AWP Proj: 24240'

Page 13 of 13



REFERENCE WELLPATH IDENTIFICATION

Operator	ANTERO RESOURCES CORPORATION	Well	Welder Unit 2H
Field	Wetzel	API	47-103-03462-0000
Facility	Journeyman Pad	Wellbore	Welder Unit 2H AWB
Slot	Slot G		

COMMENTS

Wellpath general comments

API: 47-103-03462-0000

BH Job #: 111180630

Rig: H&P 519

Duration: 3/18/2022-3/23/2022

Gyrodatta MS Gyro <17-1/2"> (100'-290')

APS EM <12-1/4"> (290')(412'-2634')

APS EM <8-3/4"> (2634')(2757'-6734')

BH AT Curve <8-1/2"> (6734')(6778'-24215')

Sycamore: 7193' MD

Middlesex: 7363' MD

Burkett: 7527' MD

Tully: 7590' MD

Marcellus POE: 7810' MD

Projected MD at TD: 24240'