



ANTERO RESOURCES CORPORATION



Location: Wetzel County, WV
 Field: Wetzel
 Facility: Journeyman Pad

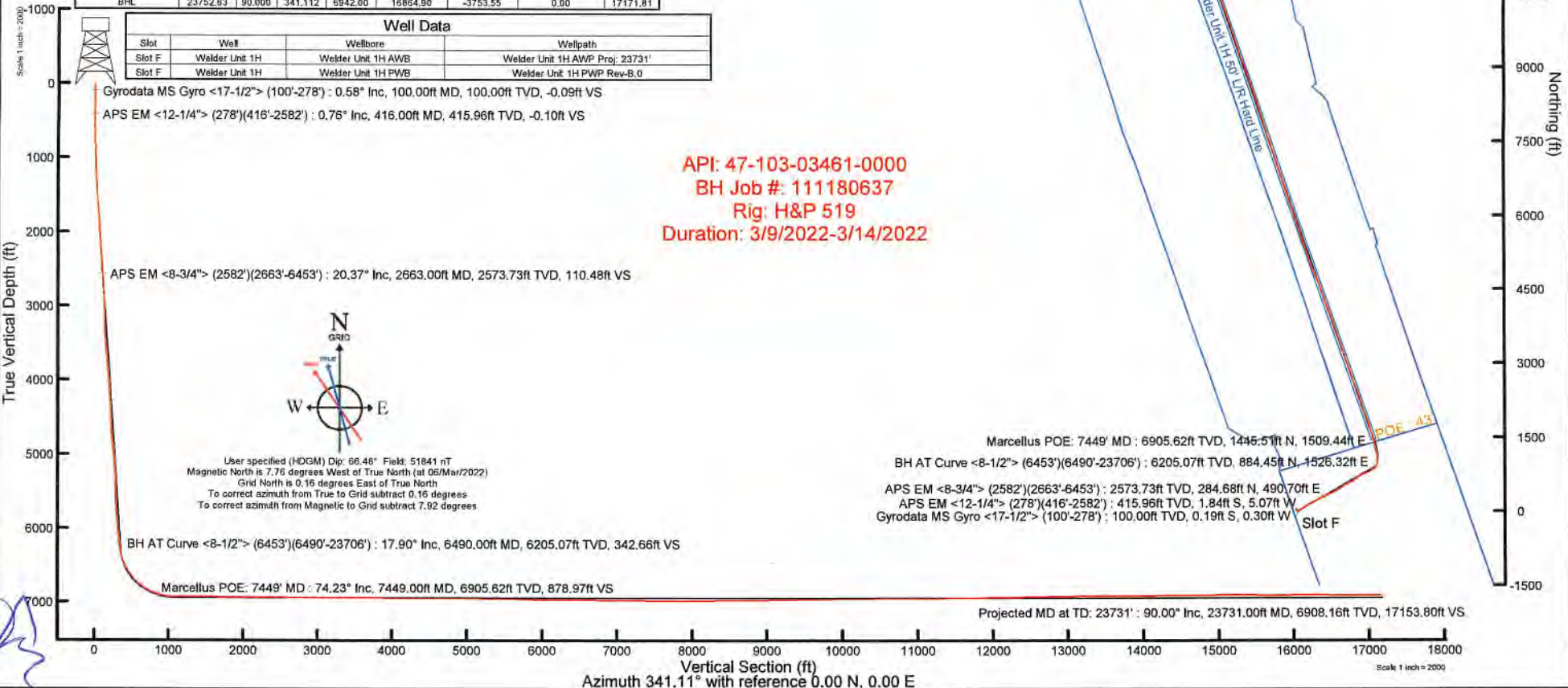
Slot: Slot F
 Well: Welder Unit 1H
 Wellbore: Welder Unit 1H PWB

Plot reference wellpath is Welder Unit 1H PWP Rev-B.0	Grid System: NAD27 / UTM Zone 17 North, US feet
True vertical depths are referenced to H&P 519 (RKB)	North Reference: Grid north
Reference wellpath measured depths are referenced to H&P 519 (RKB)	Scale: True distance
H&P 519 (RKB) to Mean Sea Level, 1184 feet	Coordinates are in feet referenced to SMI
Mean Sea Level to Grid level (At Slot: Slot F) -1154 feet	Depths are in feet
Offset wellpath MDs are referenced to each path's default MD datum	Created by advisor on 2022-03-28; Database: WA_MPL_EASTERNUS_Data

Location Information					
Facility Name	Grid East (US ft)	Grid North (US ft)	Latitude	Longitude	
Journeyman Pad	1712638.290	14361600.746	39°32'53.1520"N	80°44'37.6810"W	
Slot	Local N (ft)	Local E (ft)	Grid East (US ft)	Grid North (US ft)	Latitude
Slot F	-24.44	17.39	1712655.670	14361576.320	39°32'52.9100"N
Comment: Welder Unit 1H					
H&P 519 (RKB) to Ground level (At Slot: Slot F)					30ft
Mean Sea Level to Ground level (At Slot: Slot F)					-1154ft
H&P 519 (RKB) to Mean Sea Level					1184ft

Well Profile Data								
Design Comment	MD (ft)	Inc (")	Az (")	TVD (ft)	Local N (ft)	Local E (ft)	DLS (*/100ft)	VS (ft)
Tie On	2582.00	19.720	61.890	2497.63	271.07	466.51	0.43	105.44
Proj to Bottom	2650.00	19.720	61.890	2561.85	281.88	486.75	0.00	109.12
Drill Out	2730.00	19.720	61.890	2636.05	294.60	510.56	0.00	113.44
End of 3D Arc	2818.67	18.151	59.338	2720.82	308.69	535.83	2.00	118.65
Curve KOP	6571.04	18.151	59.338	6286.46	804.83	1541.18	0.00	357.14
POE	7463.03	74.217	341.112	6915.00	1454.76	1518.79	8.00	884.69
Landing Pl.	7660.32	90.000	341.112	6942.00	1639.06	1455.73	8.00	1079.49
BHL	23752.83	90.000	341.112	6942.00	16864.90	-3753.55	0.00	17171.81

Well Data			
Slot	Well	Wellbore	Wellpath
Slot F	Welder Unit 1H	Welder Unit 1H AWB	Welder Unit 1H AWP Proj: 23731'
Slot F	Welder Unit 1H	Welder Unit 1H PWB	Welder Unit 1H PWP Rev-B.0



API: 47-103-03461-0000
 BH Job #: 111180637
 Rig: H&P 519
 Duration: 3/9/2022-3/14/2022

Projected MD at TD: 23731' : 90.00° Inc, 23731.00ft MD, 6908.16ft TVD, 17153.80ft VS

Vertical Section (ft)
 Azimuth 341.11° with reference 0.00 N, 0.00 E



Actual Wellpath Report

Welder Unit 1H AWP Proj: 23731'

Page 1 of 13



REFERENCE WELLPATH IDENTIFICATION			
Operator	ANTERO RESOURCES CORPORATION	Well	Welder Unit 1H
Field	Wetzel	API	47-103-03461-0000
Facility	Journeyman Pad	Wellbore	Welder Unit 1H AWB
Slot	Slot F		

REPORT SETUP INFORMATION			
Projection System	NAD27 / UTM Zone 17 North, US feet	Software System	WellArchitect® 6.0
North Reference	Grid	User	Edsaryar
Scale	0.999606	Report Generated	28/Mar/2022 at 18:56
Convergence at slot	0.16° East	Database	WA_MPL_EASTERNUS_Defn

WELLPATH LOCATION						
	Local coordinates		Grid coordinates		Geographic coordinates	
	North[ft]	East[ft]	Easting[US ft]	Northing[US ft]	Latitude	Longitude
Slot Location	-24.44	17.39	1712655.67	14361576.32	39°32'52.9100"N	80°44'37.4600"W
Facility Reference Pt			1712638.29	14361600.75	39°32'53.1520"N	80°44'37.6810"W
Field Reference Pt			0.00	0.00	0°00'0.0000"	85°29'19.3013"W

WELLPATH DATUM			
Calculation method	Minimum curvature	H&P 519 (RKB) to Facility Vertical Datum	1184.00ft
Horizontal Reference Pt	Slot	H&P 519 (RKB) to Mean Sea Level	1184.00ft
Vertical Reference Pt	H&P 519 (RKB)	H&P 519 (RKB) to Ground Level at Slot (Slot F)	30.00ft
MD Reference Pt	H&P 519 (RKB)	Section Origin	N 0.00, E 0.00 ft
Field Vertical Reference	Mean Sea Level	Section Azimuth	341.11°



Actual Wellpath Report

Welder Unit 1H AWP Proj: 23731'

Page 2 of 13



REFERENCE WELLPATH IDENTIFICATION			
Operator	ANTERO RESOURCES CORPORATION	Well	Welder Unit 1H
Field	Wetzel	API	47-103-03461-0000
Facility	Journeyman Pad	Wellbore	Welder Unit 1H AWB
Slot	Slot F		

WELLPATH DATA (261 stations) † = interpolated, ‡ = extrapolated station																
MD (ft)	Inclination (°)	Azimuth (°)	TVD (ft)	Vert Sect (ft)	North (ft)	East (ft)	Grid East (US ft)	Grid North (US ft)	Latitude	Longitude	Closure Dist (ft)	Closure Dir (°)	DLS (°/100ft)	Build Rate (°/100ft)	Turn Rate (°/100ft)	Comments
0.00†	0.000	237.000	0.00	0.00	0.00	0.00	1712655.67	14361576.32	39°32'52.9100"N	80°44'37.4600"W	0.00	0.000	0.00	0.00	0.00	
30.00	0.000	237.000	30.00	0.00	0.00	0.00	1712655.67	14361576.32	39°32'52.9100"N	80°44'37.4600"W	0.00	0.000	0.00	0.00	0.00	
100.00	0.580	237.000	100.00	-0.09	-0.19	-0.30	1712655.37	14361576.13	39°32'52.9081"N	80°44'37.4638"W	0.35	237.000	0.83	0.83	0.00	Gyrodata MS Gyro <17-1/2"> (100'-278')
200.00	1.150	249.540	199.99	-0.24	-0.82	-1.66	1712654.01	14361575.50	39°32'52.9020"N	80°44'37.4812"W	1.85	243.753	0.60	0.57	12.54	
278.00	0.990	255.110	277.97	-0.21	-1.27	-3.05	1712652.62	14361575.05	39°32'52.8976"N	80°44'37.4989"W	3.30	247.431	0.24	-0.21	7.14	
416.00	0.760	252.790	415.96	-0.10	-1.84	-5.07	1712650.60	14361574.48	39°32'52.8919"N	80°44'37.5248"W	5.40	250.030	0.17	-0.17	-1.68	APS EM <12-1/4"> (278')(416'-2582')
507.00	0.810	32.030	506.95	0.32	-1.48	-5.31	1712650.36	14361574.84	39°32'52.8956"N	80°44'37.5278"W	5.51	254.455	1.62	0.05	153.01	
598.00	2.960	51.790	597.90	1.50	0.52	-3.12	1712652.55	14361576.84	39°32'52.9153"N	80°44'37.4998"W	3.16	279.502	2.43	2.36	21.71	
689.00	4.780	51.430	688.69	3.56	4.34	1.69	1712657.36	14361580.66	39°32'52.9529"N	80°44'37.4382"W	4.66	21.281	2.00	2.00	-0.40	
780.00	6.740	52.140	779.22	6.57	9.98	8.87	1712664.54	14361586.30	39°32'53.0084"N	80°44'37.3463"W	13.35	41.630	2.16	2.15	0.78	
872.00	8.310	58.530	870.43	9.78	16.77	18.81	1712674.47	14361593.08	39°32'53.0752"N	80°44'37.2193"W	25.19	48.280	1.93	1.71	6.95	
963.00	9.960	57.450	960.27	13.07	24.43	31.05	1712686.71	14361600.74	39°32'53.1506"N	80°44'37.0627"W	39.51	51.798	1.82	1.81	-1.19	
1053.00	11.500	59.930	1048.70	16.64	33.12	45.37	1712701.03	14361609.42	39°32'53.2360"N	80°44'36.8795"W	58.17	53.875	1.79	1.71	2.76	
1148.00	13.730	62.200	1141.40	20.23	43.12	63.54	1712719.19	14361619.42	39°32'53.3344"N	80°44'36.6472"W	76.79	55.839	2.40	2.35	2.39	
1243.00	15.140	62.130	1233.40	23.91	54.18	84.49	1712740.12	14361630.48	39°32'53.4431"N	80°44'36.3795"W	100.37	57.328	1.48	1.48	-0.07	
1337.00	16.780	61.310	1323.77	28.14	66.43	107.24	1712762.87	14361642.73	39°32'53.5636"N	80°44'36.0885"W	126.15	58.223	1.76	1.74	-0.87	
1432.00	18.540	59.180	1414.29	33.59	80.76	132.24	1712787.86	14361657.04	39°32'53.7044"N	80°44'35.7689"W	154.95	58.589	1.97	1.85	-2.24	
1527.00	18.490	57.540	1504.38	40.25	96.58	157.93	1712813.53	14361672.86	39°32'53.8601"N	80°44'35.4404"W	185.12	58.552	0.55	-0.05	-1.73	
1622.00	17.830	56.170	1594.64	47.53	112.76	182.72	1712838.32	14361689.04	39°32'54.0193"N	80°44'35.1234"W	214.71	58.320	0.83	-0.69	-1.44	
1716.00	17.580	54.520	1684.19	55.30	129.01	206.23	1712861.82	14361705.28	39°32'54.1793"N	80°44'34.8226"W	243.26	57.971	0.60	-0.27	-1.76	
1811.00	17.920	59.360	1774.67	62.37	144.79	230.49	1712886.07	14361721.05	39°32'54.3345"N	80°44'34.5123"W	272.20	57.864	1.59	0.36	5.09	
1905.00	20.030	62.870	1863.56	67.62	159.50	257.26	1712912.83	14361735.76	39°32'54.4792"N	80°44'34.1700"W	302.70	58.201	2.55	2.24	3.73	
2000.00	20.950	63.560	1952.55	72.19	174.48	286.95	1712942.51	14361750.74	39°32'54.6264"N	80°44'33.7905"W	335.84	58.698	1.00	0.97	0.73	
2095.00	20.770	62.610	2041.33	76.91	189.80	317.12	1712972.66	14361766.04	39°32'54.7769"N	80°44'33.4049"W	369.57	59.099	0.40	-0.19	-1.00	
2189.00	20.780	62.320	2129.21	81.92	205.21	346.68	1713002.21	14361781.45	39°32'54.9284"N	80°44'33.0269"W	402.86	59.378	0.11	0.01	-0.31	
2284.00	20.990	61.210	2217.97	87.42	221.23	376.52	1713032.04	14361797.46	39°32'55.0859"N	80°44'32.6455"W	436.70	59.562	0.47	0.22	-1.17	
2379.00	20.790	59.410	2306.73	93.76	238.01	405.94	1713061.45	14361814.23	39°32'55.2508"N	80°44'32.2692"W	470.57	59.617	0.71	-0.21	-1.89	
2473.00	19.490	62.060	2394.98	99.61	253.84	434.16	1713089.65	14361830.06	39°32'55.4066"N	80°44'31.9084"W	502.92	59.686	1.69	-1.38	2.82	
2568.00	19.780	61.890	2484.46	104.68	268.84	462.34	1713117.82	14361845.06	39°32'55.5540"N	80°44'31.5482"W	534.82	59.822	0.31	0.31	-0.18	
2582.00	19.720	61.890	2497.63	105.44	271.07	466.51	1713121.99	14361847.29	39°32'55.5759"N	80°44'31.4948"W	539.55	59.841	0.43	-0.43	0.00	



Actual Wellpath Report

Welder Unit 1H AWP Proj: 23731'

Page 3 of 13



REFERENCE WELLPATH IDENTIFICATION			
Operator	ANTERO RESOURCES CORPORATION	Well	Welder Unit 1H
Field	Wetzel	API	47-103-03461-0000
Facility	Journeyman Pad	Wellbore	Welder Unit 1H AWB
Slot	Slot F		

WELLPATH DATA (261 stations)																
MD (ft)	Inclination (°)	Azimuth (°)	TVD (ft)	Vert Sect (ft)	North (ft)	East (ft)	Grid East (US ft)	Grid North (US ft)	Latitude	Longitude	Closure Dist (ft)	Closure Dir (°)	DLS (°/100ft)	Build Rate (°/100ft)	Turn Rate (°/100ft)	Comments
2663.00	20.370	59.460	2573.73	110.48	284.68	490.70	1713146.18	14361860.88	39°32'55.7097"N	80°44'31.1854"W	567.30	59.880	1.30	0.80	-3.00	APS EM <8-3/4"> (2582')(2663'-6453')
2758.00	20.330	56.860	2662.80	117.88	302.10	518.76	1713174.23	14361878.30	39°32'55.8811"N	80°44'30.8266"W	600.32	59.786	0.95	-0.04	-2.74	
2853.00	22.350	61.430	2751.29	124.98	319.76	548.45	1713203.90	14361895.96	39°32'56.0548"N	80°44'30.4470"W	634.86	59.757	2.75	2.13	4.81	
2947.00	22.130	67.980	2838.31	128.95	334.95	580.57	1713236.01	14361911.14	39°32'56.2040"N	80°44'30.0365"W	670.26	60.018	2.65	-0.23	6.97	
3042.00	22.660	65.970	2926.15	131.57	349.11	613.87	1713269.30	14361925.29	39°32'56.3430"N	80°44'29.6108"W	706.20	60.373	0.98	0.56	-2.12	
3136.00	20.400	68.050	3013.58	134.06	362.61	645.61	1713301.02	14361938.79	39°32'56.4755"N	80°44'29.2052"W	740.47	60.679	2.54	-2.40	2.21	
3233.00	16.390	69.750	3105.61	135.29	373.67	674.14	1713329.54	14361949.84	39°32'56.5840"N	80°44'28.8405"W	770.77	61.001	4.17	-4.13	1.75	
3327.00	16.100	66.460	3195.86	136.66	383.47	698.53	1713353.92	14361959.64	39°32'56.6801"N	80°44'28.5288"W	796.86	61.235	1.03	-0.31	-3.50	
3422.00	15.500	62.180	3287.27	139.70	394.65	721.83	1713377.22	14361970.82	39°32'56.7900"N	80°44'28.2309"W	822.68	61.333	1.38	-0.63	-4.51	
3517.00	18.170	61.420	3378.19	144.17	407.67	746.07	1713401.45	14361983.82	39°32'56.9180"N	80°44'27.9210"W	850.19	61.347	2.82	2.81	-0.80	
3611.00	18.140	57.660	3467.51	150.04	422.50	771.31	1713426.67	14361998.66	39°32'57.0639"N	80°44'27.5983"W	879.45	61.287	1.25	-0.03	-4.00	
3706.00	17.090	52.710	3558.06	157.88	438.87	794.91	1713450.26	14362015.02	39°32'57.2250"N	80°44'27.2964"W	908.02	61.097	1.92	-1.11	-5.21	
3801.00	16.880	53.610	3648.92	166.44	455.51	817.12	1713472.46	14362031.65	39°32'57.3888"N	80°44'27.0123"W	935.51	60.862	0.35	-0.22	0.95	
3895.00	17.880	59.340	3738.63	173.49	470.97	840.52	1713495.86	14362047.10	39°32'57.5409"N	80°44'26.7130"W	963.48	60.737	2.11	1.06	6.10	
3990.00	17.530	57.050	3829.14	179.94	486.19	865.07	1713520.40	14362062.32	39°32'57.6906"N	80°44'26.3990"W	992.33	60.663	0.82	-0.37	-2.41	
4084.00	17.200	52.230	3918.86	187.87	502.40	887.94	1713543.26	14362078.52	39°32'57.8502"N	80°44'26.1065"W	1020.22	60.498	1.57	-0.35	-5.13	
4179.00	18.100	57.680	4009.39	195.85	518.90	911.51	1713566.82	14362095.01	39°32'58.0126"N	80°44'25.8049"W	1048.86	60.348	1.98	0.95	5.74	
4273.00	18.810	63.630	4098.56	201.21	533.44	937.43	1713592.73	14362109.55	39°32'58.1555"N	80°44'25.4735"W	1078.58	60.358	2.14	0.76	6.33	
4368.00	18.300	59.350	4188.63	206.24	547.84	963.99	1713619.28	14362123.95	39°32'58.2972"N	80°44'25.1340"W	1108.79	60.390	1.53	-0.54	-4.51	
4463.00	17.060	55.090	4279.14	213.13	563.42	988.25	1713643.53	14362139.52	39°32'58.4504"N	80°44'24.8237"W	1137.58	60.312	1.89	-1.31	-4.48	
4557.00	16.660	62.280	4369.11	219.01	577.58	1011.49	1713666.76	14362153.68	39°32'58.5897"N	80°44'24.5265"W	1164.78	60.273	2.26	-0.43	7.65	
4652.00	19.280	68.660	4459.48	221.77	589.63	1038.16	1713693.42	14362165.72	39°32'58.7080"N	80°44'24.1856"W	1193.91	60.405	3.45	2.76	6.72	
4747.00	18.440	64.270	4549.38	224.23	601.86	1066.30	1713721.55	14362177.94	39°32'58.8281"N	80°44'23.8259"W	1224.43	60.558	1.74	-0.88	-4.62	
4842.00	16.510	59.310	4640.00	228.78	615.27	1091.45	1713746.69	14362191.35	39°32'58.9600"N	80°44'23.5044"W	1252.93	60.589	2.56	-2.03	-5.22	
4936.00	18.620	58.420	4729.61	234.81	629.95	1115.72	1713770.95	14362206.02	39°32'59.1043"N	80°44'23.1940"W	1281.28	60.550	2.26	2.24	-0.95	
5034.00	18.010	53.460	4822.65	242.84	647.17	1141.22	1713796.44	14362223.23	39°32'59.2737"N	80°44'22.8678"W	1311.95	60.443	1.71	-0.62	-5.06	
5129.00	16.290	47.350	4913.43	252.66	664.94	1162.83	1713818.04	14362241.00	39°32'59.4488"N	80°44'22.5913"W	1339.52	60.238	2.62	-1.81	-6.43	
5223.00	16.890	53.330	5003.52	262.14	682.03	1183.48	1713838.68	14362258.08	39°32'59.6171"N	80°44'22.3271"W	1365.94	60.046	1.92	0.64	6.36	
5317.00	15.370	53.240	5093.82	270.13	697.64	1204.41	1713859.61	14362273.68	39°32'59.7708"N	80°44'22.0593"W	1391.87	59.919	1.62	-1.62	-0.10	
5412.00	15.410	55.260	5185.42	277.45	712.37	1224.87	1713880.06	14362288.40	39°32'59.9157"N	80°44'21.7975"W	1416.96	59.818	0.57	0.04	2.13	



Actual Wellpath Report

Welder Unit 1H AWP Proj: 23731'

Page 4 of 13



REFERENCE WELLPATH IDENTIFICATION				
Operator	ANTERO RESOURCES CORPORATION		Well	Welder Unit 1H
Field	Wetzel		API	47-103-03461-0000
Facility	Journeyman Pad		Wellbore	Welder Unit 1H AWP
Slot	Slot F			

WELLPATH DATA (261 stations) † = interpolated, ‡ = extrapolated station																
MD (ft)	Inclination (°)	Azimuth (°)	TVD (ft)	Vert Sect (ft)	North (ft)	East (ft)	Grid East (US ft)	Grid North (US ft)	Latitude	Longitude	Closure Dist (ft)	Closure Dir (°)	DLS (°/100ft)	Build Rate (°/100ft)	Turn Rate (°/100ft)	Comments
5507.00	17.760	62.700	5276.47	283.01	726.21	1248.12	1713903.30	14362302.24	39°33'0.0519"N	80°44'21.5002"W	1444.02	59.807	3.33	2.47	7.83	
5602.00	19.710	68.810	5366.44	285.78	738.65	1275.94	1713931.11	14362314.67	39°33'0.1740"N	80°44'21.1446"W	1474.32	59.933	2.91	2.05	6.43	
5696.00	18.020	67.180	5455.39	287.41	750.02	1304.12	1713959.28	14362326.04	39°33'0.2856"N	80°44'20.7844"W	1504.41	60.096	1.88	-1.80	-1.73	
5791.00	19.520	66.440	5545.33	289.71	762.06	1332.22	1713987.36	14362338.08	39°33'0.4038"N	80°44'20.4253"W	1534.78	60.229	1.60	1.58	-0.78	
5885.00	21.670	65.810	5633.32	292.59	775.45	1362.45	1714017.58	14362351.46	39°33'0.5353"N	80°44'20.0389"W	1567.67	60.353	2.30	2.29	-0.67	
5980.00	20.190	61.630	5722.05	296.91	790.43	1392.88	1714047.99	14362366.44	39°33'0.6824"N	80°44'19.6499"W	1601.52	60.426	2.21	-1.56	-4.40	
6075.00	20.640	57.990	5811.09	303.41	807.09	1421.50	1714076.61	14362383.09	39°33'0.8463"N	80°44'19.2839"W	1634.64	60.413	1.42	0.47	-3.83	
6170.00	17.290	53.300	5900.93	311.53	824.41	1447.03	1714102.12	14362400.41	39°33'1.0167"N	80°44'18.9574"W	1666.39	60.329	3.87	-3.53	-4.94	
6264.00	18.130	52.480	5990.47	320.48	841.67	1469.83	1714124.91	14362417.65	39°33'1.1866"N	80°44'18.6657"W	1693.75	60.203	0.93	0.89	-0.87	
6359.00	18.250	53.030	6080.72	329.82	859.62	1493.43	1714148.51	14362435.60	39°33'1.3633"N	80°44'18.3637"W	1723.16	60.075	0.22	0.13	0.58	
6453.00	18.520	53.200	6169.92	338.98	877.41	1517.15	1714172.22	14362453.38	39°33'1.5385"N	80°44'18.0603"W	1752.59	59.958	0.29	0.29	0.18	
6490.00	17.900	51.820	6205.07	342.66	884.45	1526.32	1714181.39	14362460.42	39°33'1.6078"N	80°44'17.9429"W	1764.06	59.909	2.04	-1.68	-3.73	BH AT Curve <8-1/2"> (6453')(6490'-23706')
6550.00	19.060	49.020	6261.98	349.39	896.57	1540.97	1714196.03	14362472.54	39°33'1.7272"N	80°44'17.7555"W	1782.81	59.808	2.43	1.93	-4.67	
6645.00	21.940	35.580	6351.00	365.55	921.20	1563.02	1714218.07	14362497.15	39°33'1.9699"N	80°44'17.4730"W	1814.29	59.486	5.79	3.03	-14.15	
6739.00	24.850	23.770	6437.31	390.30	953.58	1581.21	1714236.26	14362529.52	39°33'2.2895"N	80°44'17.2396"W	1846.50	58.907	5.86	3.10	-12.56	
6834.00	29.550	9.820	6521.87	425.58	995.00	1593.27	1714248.31	14362570.92	39°33'2.6984"N	80°44'17.0841"W	1878.44	58.015	8.31	4.95	-14.68	
6897.00†	33.007	0.056	6575.74	455.46	1027.49	1595.94	1714250.98	14362603.41	39°33'3.0196"N	80°44'17.0488"W	1898.10	57.226	9.72	5.49	-15.50	Sycamore: 6897' MD
6928.00	34.950	355.930	6601.45	472.04	1044.80	1595.32	1714250.36	14362620.70	39°33'3.1906"N	80°44'17.0561"W	1907.00	56.779	9.72	6.27	-13.31	
7023.00	40.760	348.690	6676.46	529.16	1102.43	1587.30	1714242.34	14362678.31	39°33'3.7604"N	80°44'17.1564"W	1932.58	55.219	7.69	6.12	-7.62	
7055.00†	43.011	348.138	6700.29	550.35	1123.36	1583.00	1714238.05	14362699.23	39°33'3.9674"N	80°44'17.2104"W	1941.09	54.639	7.13	7.04	-1.72	Middlesex: 7055' MD
7117.00	47.380	347.190	6743.97	594.05	1166.32	1573.59	1714228.64	14362742.17	39°33'4.3922"N	80°44'17.3289"W	1958.70	53.455	7.13	7.05	-1.53	
7205.00†	53.938	347.022	6799.72	661.70	1232.62	1558.41	1714213.46	14362808.45	39°33'5.0480"N	80°44'17.5203"W	1986.96	51.658	7.45	7.45	-0.19	Burkett: 7205' MD
7212.00	54.460	347.010	6803.82	667.34	1238.15	1557.14	1714212.19	14362813.98	39°33'5.1027"N	80°44'17.5364"W	1989.40	51.510	7.45	7.45	-0.17	
7256.00†	58.399	347.770	6828.14	703.78	1273.92	1549.14	1714204.20	14362849.74	39°33'5.4564"N	80°44'17.6371"W	2005.67	50.568	9.07	8.95	1.73	Tully: 7256' MD
7306.00	62.880	348.560	6852.65	747.01	1316.57	1540.21	1714195.27	14362892.36	39°33'5.8781"N	80°44'17.7495"W	2026.23	49.476	9.07	8.96	1.58	
7401.00	69.760	345.660	6890.79	833.48	1401.30	1520.76	1714175.83	14362977.06	39°33'6.7161"N	80°44'17.9947"W	2067.93	47.341	7.76	7.24	-3.05	
7449.00†	74.228	345.613	6905.62	878.97	1445.51	1509.44	1714164.51	14363021.26	39°33'7.1534"N	80°44'18.1376"W	2089.95	46.239	9.31	9.31	-0.10	Marcellus POE: 7449' MD
7495.00	78.510	345.570	6916.46	923.53	1488.80	1498.32	1714153.39	14363064.53	39°33'7.5815"N	80°44'18.2780"W	2112.22	45.183	9.31	9.31	-0.09	
7590.00	85.160	344.470	6929.95	1017.29	1579.58	1474.02	1714129.10	14363155.28	39°33'8.4795"N	80°44'18.5848"W	2160.51	43.020	7.09	7.00	-1.16	
7684.00	90.280	343.970	6933.69	1111.05	1669.94	1448.48	1714103.58	14363245.60	39°33'9.3732"N	80°44'18.9074"W	2210.61	40.938	5.47	5.45	-0.53	



Actual Wellpath Report

Welder Unit 1H AWP Proj: 23731'

Page 5 of 13



REFERENCE WELLPATH IDENTIFICATION			
Operator	ANTERO RESOURCES CORPORATION	Well	Welder Unit 1H
Field	Wetzel	API	47-103-03461-0000
Facility	Journeyman Pad	Wellbore	Welder Unit 1H AWB
Slot	Slot F		

WELLPATH DATA (261 stations)																
MD (ft)	Inclination (°)	Azimuth (°)	TVD (ft)	Vert Sect (ft)	North (ft)	East (ft)	Grid East (US ft)	Grid North (US ft)	Latitude	Longitude	Closure Dist (ft)	Closure Dir (°)	DLS (°/100ft)	Build Rate (°/100ft)	Turn Rate (°/100ft)	Comments
7778.00	91.350	343.290	6932.35	1204.95	1760.12	1421.99	1714077.10	14363335.74	39°33'10.2652"N	80°44'19.2423"W	2262.76	38.935	1.35	1.14	-0.72	
7873.00	89.540	341.100	6931.61	1299.92	1850.56	1392.95	1714048.07	14363426.14	39°33'11.1599"N	80°44'19.6097"W	2316.22	36.969	2.99	-1.91	-2.31	
7967.00	89.540	340.470	6932.36	1393.91	1939.32	1362.01	1714017.14	14363514.87	39°33'12.0380"N	80°44'20.0014"W	2369.81	35.081	0.67	0.00	-0.67	
8062.00	89.780	341.220	6932.93	1488.91	2029.05	1330.84	1713985.98	14363604.57	39°33'12.9258"N	80°44'20.3960"W	2426.56	33.261	0.83	0.25	0.79	
8156.00	89.820	341.710	6933.26	1582.91	2118.18	1300.96	1713956.11	14363693.66	39°33'13.8075"N	80°44'20.7742"W	2485.79	31.558	0.52	0.04	0.52	
8251.00	89.350	341.390	6933.94	1677.90	2208.29	1270.90	1713926.06	14363783.74	39°33'14.6990"N	80°44'21.1547"W	2547.89	29.921	0.60	-0.49	-0.34	
8346.00	89.780	340.650	6934.67	1772.90	2298.12	1240.00	1713895.18	14363873.53	39°33'15.5877"N	80°44'21.5458"W	2611.32	28.350	0.90	0.45	-0.78	
8440.00	89.170	341.290	6935.53	1866.89	2386.98	1209.35	1713864.54	14363962.36	39°33'16.4668"N	80°44'21.9338"W	2675.86	26.869	0.94	-0.65	0.68	
8535.00	90.150	340.630	6936.09	1961.89	2476.78	1178.36	1713833.56	14364052.12	39°33'17.3552"N	80°44'22.3261"W	2742.80	25.443	1.24	1.03	-0.69	
8630.00	89.320	338.170	6936.53	2056.84	2565.70	1144.94	1713800.16	14364141.00	39°33'18.2349"N	80°44'22.7495"W	2809.57	24.049	2.73	-0.87	-2.59	
8724.00	90.030	342.020	6937.06	2150.80	2654.06	1112.94	1713768.17	14364229.33	39°33'19.1092"N	80°44'23.1547"W	2877.97	22.750	4.16	0.76	4.10	
8819.00	89.140	341.560	6937.75	2245.79	2744.30	1083.26	1713738.50	14364319.53	39°33'20.0019"N	80°44'23.5304"W	2950.36	21.541	1.05	-0.94	-0.48	
8913.00	90.060	341.190	6938.41	2339.79	2833.38	1053.24	1713708.49	14364408.57	39°33'20.8830"N	80°44'23.9104"W	3022.80	20.391	1.05	0.98	-0.39	
9008.00	89.350	339.830	6938.90	2434.78	2922.93	1021.54	1713676.81	14364498.09	39°33'21.7690"N	80°44'24.3117"W	3096.30	19.264	1.61	-0.75	-1.43	
9102.00	89.720	341.810	6939.66	2528.77	3011.70	990.66	1713645.94	14364588.83	39°33'22.6473"N	80°44'24.7027"W	3170.45	18.208	2.14	0.39	2.11	
9197.00	89.230	341.500	6940.53	2623.76	3101.87	960.76	1713616.05	14364676.96	39°33'23.5393"N	80°44'25.0811"W	3247.26	17.210	0.61	-0.52	-0.33	
9292.00	90.430	340.950	6940.81	2718.76	3191.81	930.19	1713585.49	14364766.87	39°33'24.4291"N	80°44'25.4681"W	3324.59	16.248	1.39	1.26	-0.58	
9386.00	89.630	341.450	6940.76	2812.76	3280.80	899.89	1713555.21	14364855.82	39°33'25.3094"N	80°44'25.8516"W	3401.98	15.339	1.00	-0.85	0.53	
9481.00	89.510	340.840	6941.48	2907.75	3370.70	869.19	1713524.52	14364945.68	39°33'26.1988"N	80°44'26.2402"W	3480.96	14.460	0.65	-0.13	-0.64	
9576.00	89.630	341.930	6942.19	3002.75	3460.72	838.87	1713494.21	14365035.67	39°33'27.0894"N	80°44'26.6241"W	3560.94	13.626	1.15	0.13	1.15	
9671.00	89.820	342.330	6942.65	3097.73	3551.14	809.72	1713465.07	14365126.05	39°33'27.9838"N	80°44'26.9929"W	3642.28	12.845	0.47	0.20	0.42	
9765.00	89.660	340.860	6943.07	3191.73	3640.33	780.04	1713435.40	14365215.21	39°33'28.8661"N	80°44'27.3685"W	3722.96	12.094	1.57	-0.17	-1.56	
9860.00	89.970	341.740	6943.38	3286.72	3730.31	749.58	1713404.96	14365305.15	39°33'29.7563"N	80°44'27.7541"W	3804.88	11.362	0.98	0.33	0.93	
9954.00	89.720	339.710	6943.63	3380.72	3819.04	718.56	1713373.94	14365393.84	39°33'30.6341"N	80°44'28.1470"W	3886.05	10.656	2.18	-0.27	-2.16	
10049.00	89.570	341.990	6944.22	3475.71	3908.77	687.39	1713342.79	14365483.54	39°33'31.5218"N	80°44'28.5415"W	3968.75	9.974	2.41	-0.16	2.40	
10144.00	89.630	338.590	6944.89	3570.68	3998.19	655.36	1713310.77	14365572.93	39°33'32.4065"N	80°44'28.9472"W	4051.55	9.309	3.58	0.06	-3.58	
10238.00	89.350	342.030	6945.72	3664.65	4086.68	623.70	1713279.12	14365661.38	39°33'33.2819"N	80°44'29.3483"W	4134.00	8.677	3.67	-0.30	3.66	
10333.00	89.600	341.190	6946.59	3759.64	4176.82	593.73	1713249.16	14365751.49	39°33'34.1737"N	80°44'29.7276"W	4218.81	8.090	0.92	0.26	-0.88	
10427.00	89.940	340.860	6946.97	3853.64	4265.71	563.16	1713218.61	14365840.34	39°33'35.0531"N	80°44'30.1146"W	4302.73	7.521	0.50	0.36	-0.35	
10522.00	89.910	341.880	6947.09	3948.64	4355.73	532.81	1713188.27	14365930.33	39°33'35.9436"N	80°44'30.4988"W	4388.20	6.974	1.07	-0.03	1.07	



Actual Wellpath Report

Welder Unit 1H AWP Proj: 23731'

Page 6 of 13



REFERENCE WELLPATH IDENTIFICATION			
Operator	ANTERO RESOURCES CORPORATION	Well	Welder Unit 1H
Field	Wetzel	API	47-103-03461-0000
Facility	Journeyman Pad	Wellbore	Welder Unit 1H AWB
Slot	Slot F		

WELLPATH DATA (261 stations)																
MD (ft)	Inclination [°]	Azimuth [°]	TVD (ft)	Vert Sect (ft)	North (ft)	East (ft)	Grid East (US ft)	Grid North (US ft)	Latitude	Longitude	Closure Dist (ft)	Closure Dir [°]	DLS (°/100ft)	Build Rate (°/100ft)	Turn Rate (°/100ft)	Comments
10617.00	89.820	340.360	6947.32	4043.64	4445.62	502.07	1713157.55	14366020.18	39°33'36.8329"N	80°44'30.8879"W	4473.88	6.443	1.60	-0.09	-1.60	
10711.00	89.420	340.340	6947.94	4137.63	4534.14	470.47	1713125.95	14366108.67	39°33'37.7087"N	80°44'31.2883"W	4558.48	5.924	0.43	-0.43	-0.02	
10806.00	89.820	338.020	6948.57	4232.57	4622.93	436.70	1713092.20	14366197.42	39°33'38.5871"N	80°44'31.7161"W	4643.51	5.396	2.48	0.42	-2.44	
10901.00	89.230	336.340	6949.36	4327.33	4710.49	399.86	1713055.37	14366284.94	39°33'39.4535"N	80°44'32.1833"W	4727.43	4.852	1.87	-0.62	-1.77	
10995.00	89.570	335.790	6950.34	4420.96	4796.40	361.73	1713017.25	14366370.82	39°33'40.3037"N	80°44'32.6670"W	4810.02	4.313	0.69	0.36	-0.59	
11090.00	89.660	337.280	6950.98	4515.66	4883.54	323.90	1712979.44	14366457.93	39°33'41.1660"N	80°44'33.1468"W	4894.27	3.795	1.57	0.09	1.57	
11184.00	90.120	338.980	6951.16	4609.53	4970.77	288.89	1712944.44	14366545.12	39°33'42.0291"N	80°44'33.5907"W	4979.16	3.326	1.87	0.49	1.81	
11279.00	89.350	339.730	6951.60	4704.48	5059.67	255.39	1712910.96	14366633.98	39°33'42.9086"N	80°44'34.0151"W	5066.11	2.890	1.13	-0.81	0.79	
11374.00	89.570	342.210	6952.50	4799.47	5149.46	224.42	1712880.00	14366723.75	39°33'43.7970"N	80°44'34.4073"W	5154.35	2.495	2.62	0.23	2.61	
11468.00	90.430	341.830	6952.50	4893.45	5238.87	195.40	1712851.00	14366813.12	39°33'44.6815"N	80°44'34.7745"W	5242.52	2.136	1.00	0.91	-0.40	
11563.00	90.460	342.430	6951.76	4988.44	5329.29	166.25	1712821.86	14366903.50	39°33'45.5759"N	80°44'35.1434"W	5331.88	1.787	0.63	0.03	0.63	
11657.00	89.260	342.100	6951.99	5082.42	5418.82	137.62	1712793.24	14366992.99	39°33'46.4615"N	80°44'35.5057"W	5420.56	1.455	1.32	-1.28	-0.35	
11752.00	89.260	341.920	6953.22	5177.40	5509.17	108.28	1712763.91	14367083.30	39°33'47.3553"N	80°44'35.8770"W	5510.23	1.126	0.19	0.00	-0.19	
11846.00	88.980	341.720	6954.66	5271.38	5598.46	78.96	1712734.60	14367172.57	39°33'48.2386"N	80°44'36.2482"W	5599.02	0.808	0.37	-0.30	-0.21	
11941.00	89.850	342.680	6955.63	5366.35	5688.91	49.92	1712705.57	14367262.98	39°33'49.1334"N	80°44'36.6157"W	5689.13	0.503	1.36	0.92	1.01	
12036.00	89.170	339.790	6956.44	5461.34	5778.85	19.36	1712675.03	14367352.88	39°33'50.0231"N	80°44'37.0025"W	5778.88	0.192	3.13	-0.72	-3.04	
12130.00	89.020	342.550	6957.93	5555.32	5867.79	-10.97	1712644.70	14367441.79	39°33'50.9030"N	80°44'37.3866"W	5867.80	359.893	2.94	-0.16	2.94	
12224.00	88.250	342.860	6960.17	5649.25	5957.52	-38.91	1712616.78	14367531.48	39°33'51.7906"N	80°44'37.7401"W	5957.65	359.626	0.88	-0.82	0.33	
12319.00	88.210	341.060	6963.10	5744.19	6047.80	-68.31	1712587.39	14367621.73	39°33'52.6837"N	80°44'38.1122"W	6048.19	359.353	1.89	-0.04	-1.89	
12413.00	88.400	341.730	6965.88	5838.15	6136.85	-98.29	1712557.42	14367710.74	39°33'53.5646"N	80°44'38.4918"W	6137.64	359.082	0.74	0.20	0.71	
12507.00	88.520	341.410	6968.41	5932.11	6226.00	-127.99	1712527.73	14367799.85	39°33'54.4465"N	80°44'38.8678"W	6227.31	358.822	0.36	0.13	-0.34	
12602.00	89.260	341.730	6970.25	6027.09	6316.11	-158.02	1712497.71	14367889.92	39°33'55.3379"N	80°44'39.2480"W	6318.08	358.567	0.85	0.78	0.34	
12697.00	90.710	342.200	6970.27	6122.08	6406.44	-187.43	1712468.31	14367980.22	39°33'56.2315"N	80°44'39.6202"W	6409.18	358.324	1.60	1.53	0.49	
12791.00	89.600	342.320	6970.02	6216.06	6495.96	-216.07	1712439.68	14368069.71	39°33'57.1171"N	80°44'39.9827"W	6499.56	358.095	1.19	-1.18	0.13	
12885.00	89.630	342.130	6970.65	6310.04	6585.47	-244.77	1712411.00	14368159.19	39°33'58.0026"N	80°44'40.3459"W	6590.02	357.871	0.20	0.03	-0.20	
12980.00	89.510	341.000	6971.36	6405.03	6675.60	-274.81	1712380.97	14368249.27	39°33'58.8941"N	80°44'40.7262"W	6681.25	357.643	1.20	-0.13	-1.19	
13074.00	89.600	341.750	6972.09	6499.03	6764.67	-304.83	1712350.96	14368338.31	39°33'59.7753"N	80°44'41.1063"W	6771.53	357.420	0.80	0.10	0.80	
13169.00	89.660	341.510	6972.71	6594.02	6854.83	-334.77	1712321.03	14368428.43	39°34'00.6672"N	80°44'41.4853"W	6863.00	357.204	0.26	0.06	-0.25	
13263.00	89.690	341.890	6973.24	6688.01	6944.07	-364.28	1712291.53	14368517.64	39°34'01.5500"N	80°44'41.8589"W	6953.62	356.997	0.41	0.03	0.40	
13358.00	89.170	342.200	6974.19	6783.00	7034.44	-393.57	1712262.26	14368607.97	39°34'02.4440"N	80°44'42.2296"W	7045.44	356.798	0.64	-0.55	0.33	



Actual Wellpath Report

Welder Unit 1H AWP Proj: 23731'

Page 7 of 13



REFERENCE WELLPATH IDENTIFICATION			
Operator	ANTERO RESOURCES CORPORATION	Well	Welder Unit 1H
Field	Wetzel	API	47-103-03461-0000
Facility	Journeyman Pad	Wellbore	Welder Unit 1H AWB
Slot	Slot F		

WELLPATH DATA (261 stations)																
MD (ft)	Inclination (°)	Azimuth (°)	TVD (ft)	Vert Sect (ft)	North (ft)	East (ft)	Grid East (US ft)	Grid North (US ft)	Latitude	Longitude	Closure Dist (ft)	Closure Dir (°)	DLS (°/100ft)	Build Rate (°/100ft)	Turn Rate (°/100ft)	Comments
13452.00	89.380	341.510	6975.37	6876.98	7123.76	-422.84	1712233.00	14368697.26	39°34'3.3275"N	80°44'42.6001"W	7136.29	356.603	0.77	0.22	-0.73	
13547.00	89.540	342.190	6976.27	6971.97	7214.03	-452.43	1712203.42	14368787.49	39°34'4.2205"N	80°44'42.9747"W	7228.20	356.411	0.74	0.17	0.72	
13642.00	89.450	342.360	6977.11	7066.94	7304.51	-481.35	1712174.51	14368877.94	39°34'5.1156"N	80°44'43.3407"W	7320.36	356.230	0.20	-0.09	0.18	
13736.00	89.200	342.040	6978.21	7160.92	7394.01	-510.09	1712145.79	14368967.40	39°34'6.0009"N	80°44'43.7044"W	7411.58	356.054	0.43	-0.27	-0.34	
13831.00	89.690	342.590	6979.13	7255.89	7484.51	-538.94	1712116.94	14369057.87	39°34'6.8962"N	80°44'44.0696"W	7503.89	355.881	0.78	0.52	0.58	
13925.00	89.290	341.940	6979.97	7349.87	7574.04	-567.58	1712088.32	14369147.36	39°34'7.7818"N	80°44'44.4320"W	7595.28	355.714	0.81	-0.43	-0.69	
14020.00	89.140	341.720	6981.27	7444.85	7664.29	-597.20	1712058.71	14369237.58	39°34'8.6747"N	80°44'44.8070"W	7687.53	355.545	0.28	-0.16	-0.23	
14115.00	89.260	341.190	6982.60	7539.84	7754.35	-627.41	1712028.51	14369327.60	39°34'9.5656"N	80°44'45.1895"W	7779.69	355.374	0.57	0.13	-0.56	
14209.00	89.880	342.580	6983.31	7633.83	7843.69	-656.63	1711999.30	14369416.90	39°34'10.4493"N	80°44'45.5595"W	7871.12	355.215	1.62	0.66	1.48	
14304.00	89.450	341.350	6983.86	7728.81	7934.02	-686.05	1711969.90	14369507.19	39°34'11.3429"N	80°44'45.9318"W	7963.62	355.058	1.37	-0.45	-1.29	
14398.00	90.460	342.040	6983.93	7822.81	8023.26	-715.57	1711940.39	14369596.40	39°34'12.2257"N	80°44'46.3056"W	8055.10	354.903	1.30	1.07	0.73	
14493.00	90.280	342.510	6983.32	7917.79	8113.75	-744.49	1711911.47	14369686.85	39°34'13.1208"N	80°44'46.6716"W	8147.83	354.757	0.53	-0.19	0.49	
14587.00	90.180	342.290	6982.94	8011.76	8203.35	-772.91	1711883.06	14369776.42	39°34'14.0071"N	80°44'47.0314"W	8239.68	354.618	0.26	-0.11	-0.23	
14682.00	90.370	341.730	6982.49	8106.75	8293.70	-802.25	1711853.73	14369866.74	39°34'14.9009"N	80°44'47.4028"W	8332.41	354.475	0.62	0.20	-0.59	
14776.00	90.460	341.380	6981.81	8200.74	8382.87	-831.99	1711824.01	14369955.87	39°34'15.7830"N	80°44'47.7793"W	8424.05	354.332	0.38	0.10	-0.37	
14871.00	90.950	341.830	6980.64	8295.73	8473.01	-861.97	1711794.04	14370045.97	39°34'16.6747"N	80°44'48.1589"W	8516.74	354.191	0.70	0.52	0.47	
14966.00	89.510	340.370	6980.26	8390.73	8562.88	-892.74	1711763.28	14370135.81	39°34'17.5638"N	80°44'48.5486"W	8609.29	354.048	2.16	-1.52	-1.54	
15060.00	91.320	339.750	6979.58	8484.70	8651.24	-924.79	1711731.24	14370224.13	39°34'18.4380"N	80°44'48.9547"W	8700.53	353.898	2.04	1.93	-0.66	
15155.00	90.860	342.280	6977.77	8579.68	8741.05	-955.69	1711700.36	14370313.90	39°34'19.3264"N	80°44'49.3461"W	8793.14	353.760	2.71	-0.48	2.66	
15250.00	90.310	341.630	6976.80	8674.66	8831.37	-985.12	1711670.94	14370404.19	39°34'20.2199"N	80°44'49.7186"W	8886.14	353.635	0.90	-0.58	-0.88	
15344.00	90.030	339.190	6976.52	8768.65	8919.92	-1016.63	1711639.44	14370492.71	39°34'21.0959"N	80°44'50.1178"W	8977.67	353.498	2.61	-0.30	-2.60	
15439.00	91.450	340.960	6975.29	8863.62	9009.22	-1049.00	1711607.08	14370581.97	39°34'21.9794"N	80°44'50.5280"W	9070.09	353.359	2.39	1.49	1.86	
15533.00	89.940	340.180	6974.15	8957.60	9097.86	-1080.27	1711575.83	14370670.57	39°34'22.8563"N	80°44'50.9241"W	9161.77	353.228	1.81	-1.61	-0.83	
15628.00	91.170	340.160	6973.23	9052.58	9187.22	-1112.49	1711543.62	14370759.90	39°34'23.7404"N	80°44'51.3324"W	9254.33	353.096	1.29	1.29	-0.02	
15723.00	90.550	340.070	6971.81	9147.56	9276.54	-1144.80	1711511.32	14370849.19	39°34'24.6241"N	80°44'51.7418"W	9346.91	352.965	0.66	-0.65	-0.09	
15817.00	91.170	341.050	6970.40	9241.54	9365.17	-1176.08	1711480.05	14370937.78	39°34'25.5009"N	80°44'52.1381"W	9438.73	352.842	1.23	0.66	1.04	
15912.00	91.200	342.270	6968.43	9336.51	9455.33	-1205.97	1711450.18	14371027.90	39°34'26.3927"N	80°44'52.5165"W	9531.92	352.732	1.28	0.03	1.28	
16007.00	90.890	342.120	6966.70	9431.48	9545.76	-1235.01	1711421.15	14371118.30	39°34'27.2873"N	80°44'52.8842"W	9625.32	352.628	0.36	-0.33	-0.16	
16101.00	90.800	341.390	6965.31	9525.47	9635.02	-1264.44	1711391.73	14371207.53	39°34'28.1703"N	80°44'53.2568"W	9717.64	352.524	0.78	-0.10	-0.78	
16196.00	90.800	342.340	6963.99	9620.45	9725.30	-1294.01	1711362.18	14371297.76	39°34'29.0633"N	80°44'53.6311"W	9811.01	352.421	1.00	0.00	1.00	



Actual Wellpath Report

Welder Unit 1H AWP Proj: 23731'
Page 8 of 13



REFERENCE WELLPATH IDENTIFICATION			
Operator	ANTERO RESOURCES CORPORATION	Well	Welder Unit 1H
Field	Wetzel	API	47-103-03461-0000
Facility	Journeyman Pad	Wellbore	Welder Unit 1H AWB
Slot	Slot F		

WELLPATH DATA (261 stations)																
MD (ft)	Inclination [°]	Azimuth [°]	TVD (ft)	Vert Sect (ft)	North (ft)	East (ft)	Grid East (US ft)	Grid North (US ft)	Latitude	Longitude	Closure Dist (ft)	Closure Dir [°]	DLS (°/100ft)	Build Rate (°/100ft)	Turn Rate (°/100ft)	Comments
16291.00	90.770	340.940	6962.68	9715.43	9815.45	-1323.93	1711332.27	14371387.88	39°34'29.9552"N	80°44'54.0100"W	9904.33	352.318	1.47	-0.03	-1.47	
16385.00	90.980	341.730	6961.25	9809.42	9904.49	-1354.00	1711302.20	14371476.89	39°34'30.8360"N	80°44'54.3909"W	9996.62	352.216	0.87	0.22	0.84	
16480.00	90.890	340.720	6959.70	9904.40	9994.43	-1384.58	1711271.64	14371566.79	39°34'31.7257"N	80°44'54.7781"W	10089.88	352.113	1.07	-0.09	-1.06	
16575.00	90.650	340.880	6958.42	9999.39	10084.13	-1415.82	1711240.41	14371656.46	39°34'32.6132"N	80°44'55.1739"W	10183.04	352.008	0.30	-0.25	0.17	
16669.00	90.890	340.650	6957.16	10093.38	10172.88	-1446.78	1711209.46	14371745.17	39°34'33.4911"N	80°44'55.5661"W	10275.24	351.906	0.35	0.26	-0.24	
16764.00	90.150	340.410	6956.30	10188.37	10262.44	-1478.44	1711177.81	14371834.70	39°34'34.3771"N	80°44'55.9673"W	10368.39	351.802	0.82	-0.78	-0.25	
16859.00	90.980	340.580	6955.36	10283.36	10351.98	-1510.16	1711146.11	14371924.20	39°34'35.2630"N	80°44'56.3692"W	10461.56	351.700	0.89	0.87	0.18	
16953.00	90.520	341.370	6954.13	10377.35	10440.84	-1540.80	1711115.48	14372013.03	39°34'36.1420"N	80°44'56.7573"W	10553.92	351.605	0.97	-0.49	0.84	
17048.00	90.490	340.720	6953.29	10472.35	10530.69	-1571.66	1711084.63	14372102.83	39°34'37.0308"N	80°44'57.1482"W	10647.32	351.512	0.68	-0.03	-0.68	
17142.00	90.030	340.950	6952.86	10566.35	10619.47	-1602.52	1711053.79	14372191.59	39°34'37.9092"N	80°44'57.5391"W	10739.71	351.419	0.55	-0.49	0.24	
17237.00	90.340	340.480	6952.56	10661.34	10709.14	-1633.89	1711022.43	14372281.22	39°34'38.7963"N	80°44'57.9366"W	10833.07	351.325	0.59	0.33	-0.49	
17332.00	89.910	341.430	6952.35	10756.34	10798.94	-1664.89	1710991.44	14372370.98	39°34'39.6846"N	80°44'58.3293"W	10926.53	351.236	1.10	-0.45	1.00	
17426.00	90.460	339.450	6952.05	10850.33	10887.51	-1696.36	1710959.98	14372459.52	39°34'40.5608"N	80°44'58.7280"W	11018.87	351.144	2.19	0.59	-2.11	
17521.00	89.820	340.410	6951.81	10945.31	10976.74	-1728.96	1710927.40	14372548.71	39°34'41.4436"N	80°44'59.1412"W	11112.07	351.049	1.21	-0.67	1.01	
17615.00	91.630	340.470	6950.63	11039.29	11065.31	-1760.43	1710895.94	14372637.24	39°34'42.3198"N	80°44'59.5399"W	11204.47	350.960	1.93	1.93	0.06	
17710.00	89.880	340.640	6949.37	11134.27	11154.88	-1792.05	1710864.33	14372726.78	39°34'43.2059"N	80°44'59.9406"W	11297.91	350.873	1.85	-1.84	0.18	
17805.00	90.490	340.950	6949.07	11229.27	11244.59	-1823.30	1710833.09	14372816.45	39°34'44.0934"N	80°45'0.3365"W	11391.45	350.790	0.72	0.64	0.33	
17899.00	90.950	340.350	6947.89	11323.26	11333.27	-1854.44	1710801.96	14372905.10	39°34'44.9707"N	80°45'0.7311"W	11483.99	350.707	0.80	0.49	-0.64	
17994.00	91.200	339.090	6946.10	11418.21	11422.36	-1887.36	1710769.06	14372994.16	39°34'45.8521"N	80°45'1.1483"W	11577.24	350.618	1.35	0.26	-1.33	
18089.00	90.310	340.370	6944.85	11513.18	11511.47	-1920.27	1710736.16	14373083.23	39°34'46.7337"N	80°45'1.5655"W	11670.53	350.529	1.64	-0.94	1.35	
18184.00	91.020	339.180	6943.75	11608.14	11600.60	-1953.11	1710703.33	14373172.33	39°34'47.6155"N	80°45'1.9817"W	11763.87	350.443	1.46	0.75	-1.25	
18278.00	90.550	341.120	6942.46	11702.11	11689.01	-1985.02	1710671.43	14373260.70	39°34'48.4901"N	80°45'2.3862"W	11856.36	350.362	2.12	-0.50	2.06	
18373.00	90.310	338.570	6941.75	11797.08	11778.18	-2017.75	1710638.72	14373349.83	39°34'49.3723"N	80°45'2.8010"W	11949.76	350.279	2.70	-0.25	-2.68	
18468.00	90.800	342.260	6940.83	11892.05	11867.66	-2049.59	1710606.89	14373439.28	39°34'50.2575"N	80°45'3.2044"W	12043.35	350.201	3.92	0.52	3.88	
18563.00	90.580	340.380	6939.68	11987.04	11957.65	-2080.01	1710576.48	14373529.23	39°34'51.1477"N	80°45'3.5898"W	12137.21	350.132	1.99	-0.23	-1.98	
18658.00	91.420	341.080	6938.03	12082.02	12047.31	-2111.36	1710545.15	14373618.86	39°34'52.0347"N	80°45'3.9870"W	12230.92	350.060	1.15	0.88	0.74	
18752.00	90.280	340.020	6936.63	12176.00	12135.93	-2142.66	1710513.86	14373707.45	39°34'52.9115"N	80°45'4.3836"W	12323.63	349.987	1.66	-1.21	-1.13	
18847.00	91.230	338.550	6935.38	12270.94	12224.78	-2176.26	1710480.28	14373796.26	39°34'53.7905"N	80°45'4.8095"W	12416.98	349.906	1.84	1.00	-1.55	
18942.00	90.310	339.600	6934.10	12365.87	12313.50	-2210.18	1710446.36	14373884.95	39°34'54.6683"N	80°45'5.2397"W	12510.29	349.824	1.47	-0.97	1.11	
19036.00	91.110	340.730	6932.94	12459.85	12401.92	-2242.07	1710414.48	14373973.33	39°34'55.5430"N	80°45'5.6439"W	12602.96	349.753	1.47	0.85	1.20	



Actual Wellpath Report

Welder Unit 1H AWP Proj: 23731'
Page 9 of 13



REFERENCE WELLPATH IDENTIFICATION			
Operator	ANTERO RESOURCES CORPORATION	Well	Welder Unit 1H
Field	Wetzel	API	47-103-03461-0000
Facility	Journeyman Pad	Wellbore	Welder Unit 1H AWB
Slot	Slot F		

WELLPATH DATA (261 stations)																
MD (ft)	Inclination (°)	Azimuth (°)	TVD (ft)	Vert Sect (ft)	North (ft)	East (ft)	Grid East (US ft)	Grid North (US ft)	Latitude	Longitude	Closure Dist (ft)	Closure Dir (°)	DLS (°/100ft)	Build Rate (°/100ft)	Turn Rate (°/100ft)	Comments
19131.00	91.820	340.990	6930.51	12554.82	12491.64	-2273.21	1710383.36	14374063.01	39°34'56.4305"N	80°45'6.0384"W	12696.79	349.686	0.80	0.75	0.27	
19226.00	90.650	339.370	6928.46	12649.78	12580.98	-2305.41	1710351.17	14374152.32	39°34'57.3144"N	80°45'6.4465"W	12790.47	349.616	2.10	-1.23	-1.71	
19321.00	92.000	340.810	6926.26	12744.73	12670.28	-2337.76	1710318.84	14374241.58	39°34'58.1978"N	80°45'6.8564"W	12884.14	349.546	2.08	1.42	1.52	
19415.00	90.680	341.640	6924.07	12838.71	12759.25	-2368.00	1710288.61	14374330.52	39°34'59.0780"N	80°45'7.2396"W	12977.13	349.486	1.66	-1.40	0.88	
19510.00	90.520	340.090	6923.07	12933.70	12848.99	-2399.14	1710257.48	14374420.22	39°34'59.9658"N	80°45'7.6341"W	13071.05	349.424	1.64	-0.17	-1.63	
19605.00	90.980	340.440	6921.83	13028.68	12938.40	-2431.21	1710225.42	14374509.60	39°35'0.8503"N	80°45'8.0407"W	13164.84	349.358	0.61	0.48	0.37	
19699.00	91.260	341.530	6919.99	13122.66	13027.26	-2461.83	1710194.81	14374598.42	39°35'1.7293"N	80°45'8.4286"W	13257.83	349.299	1.20	0.30	1.16	
19794.00	89.630	340.990	6919.25	13217.65	13117.21	-2492.35	1710164.30	14374688.34	39°35'2.6192"N	80°45'8.8152"W	13351.90	349.242	1.81	-1.72	-0.57	
19889.00	90.310	340.400	6919.30	13312.65	13206.87	-2523.76	1710132.91	14374777.96	39°35'3.5061"N	80°45'9.2132"W	13445.85	349.182	0.95	0.72	-0.62	
19983.00	90.650	342.090	6918.51	13406.64	13295.87	-2553.98	1710102.70	14374866.93	39°35'4.3866"N	80°45'9.5961"W	13538.95	349.127	1.83	0.36	1.80	
20078.00	89.720	337.020	6918.21	13501.57	13384.86	-2587.15	1710069.54	14374955.88	39°35'5.2669"N	80°45'10.0166"W	13632.60	349.060	5.43	-0.98	-5.34	
20172.00	90.250	340.710	6918.23	13595.48	13472.52	-2621.04	1710035.67	14375043.51	39°35'6.1342"N	80°45'10.4464"W	13725.11	348.991	3.97	0.56	3.93	
20267.00	89.940	341.360	6918.07	13690.48	13562.36	-2651.91	1710004.81	14375133.31	39°35'7.0230"N	80°45'10.8376"W	13819.20	348.936	0.76	-0.33	0.68	
20361.00	90.620	340.270	6917.62	13784.48	13651.14	-2682.80	1709973.93	14375222.05	39°35'7.9012"N	80°45'11.2290"W	13912.26	348.882	1.37	0.72	-1.16	
20456.00	90.280	343.350	6916.87	13879.46	13741.38	-2712.46	1709944.29	14375312.26	39°35'8.7939"N	80°45'11.6045"W	14006.53	348.834	3.26	-0.36	3.24	
20551.00	89.940	343.170	6916.69	13974.39	13832.35	-2739.82	1709916.94	14375403.19	39°35'9.6937"N	80°45'11.9508"W	14101.08	348.796	0.40	-0.36	-0.19	
20645.00	91.320	342.680	6915.65	14068.33	13922.20	-2767.42	1709889.35	14375493.01	39°35'10.5825"N	80°45'12.3002"W	14194.59	348.757	1.56	1.47	-0.52	
20740.00	91.020	342.890	6913.71	14163.27	14012.93	-2795.53	1709861.25	14375583.70	39°35'11.4799"N	80°45'12.6560"W	14289.05	348.718	0.39	-0.32	0.22	
20835.00	90.680	343.560	6912.30	14258.20	14103.87	-2822.94	1709833.85	14375674.61	39°35'12.3795"N	80°45'13.0030"W	14383.61	348.682	0.79	-0.36	0.71	
20929.00	90.310	342.780	6911.49	14352.13	14193.84	-2850.16	1709806.64	14375764.54	39°35'13.2694"N	80°45'13.3475"W	14477.17	348.646	0.92	-0.39	-0.83	
21023.00	90.310	343.070	6910.98	14446.08	14283.70	-2877.76	1709779.05	14375854.36	39°35'14.1582"N	80°45'13.6969"W	14570.71	348.609	0.31	0.00	0.31	
21118.00	90.430	342.550	6910.37	14541.04	14374.45	-2905.83	1709750.99	14375945.08	39°35'15.0559"N	80°45'14.0523"W	14665.22	348.572	0.56	0.13	-0.55	
21213.00	90.620	342.690	6909.50	14636.00	14465.11	-2934.21	1709722.62	14376035.70	39°35'15.9527"N	80°45'14.4116"W	14759.71	348.533	0.25	0.20	0.15	
21308.00	90.460	342.780	6908.60	14730.96	14555.83	-2962.40	1709694.44	14376126.38	39°35'16.8500"N	80°45'14.7685"W	14854.22	348.496	0.19	-0.17	0.09	
21402.00	90.250	342.700	6908.02	14824.92	14645.59	-2990.29	1709666.56	14376216.11	39°35'17.7379"N	80°45'15.1216"W	14947.75	348.460	0.24	-0.22	-0.09	
21497.00	90.430	341.760	6907.46	14919.90	14736.06	-3019.28	1709637.58	14376306.54	39°35'18.6328"N	80°45'15.4888"W	15042.19	348.421	1.01	0.19	-0.99	
21592.00	90.400	341.680	6906.77	15014.89	14826.26	-3049.08	1709607.80	14376396.71	39°35'19.5251"N	80°45'15.8662"W	15136.54	348.379	0.09	-0.03	-0.08	
21686.00	90.120	341.390	6906.34	15108.89	14915.42	-3078.85	1709578.04	14376485.83	39°35'20.4070"N	80°45'16.2434"W	15229.87	348.337	0.43	-0.30	-0.31	
21781.00	89.970	341.750	6906.27	15203.89	15005.55	-3108.89	1709548.01	14376575.92	39°35'21.2986"N	80°45'16.6239"W	15324.22	348.295	0.41	-0.16	0.38	
21876.00	90.090	342.120	6906.22	15298.88	15095.86	-3138.35	1709518.57	14376666.20	39°35'22.1920"N	80°45'16.9970"W	15418.64	348.256	0.41	0.13	0.39	



Actual Wellpath Report

Welder Unit 1H AWP Proj: 23731'
Page 10 of 13



REFERENCE WELLPATH IDENTIFICATION			
Operator	ANTERO RESOURCES CORPORATION	Well	Welder Unit 1H
Field	Wetzel	API	47-103-03461-0000
Facility	Journeyman Pad	Wellbore	Welder Unit 1H AWB
Slot	Slot F		

WELLPATH DATA (261 stations) † = interpolated, ‡ = extrapolated station																
MD [ft]	Inclination [°]	Azimuth [°]	TVD [ft]	Vert Sect [ft]	North [ft]	East [ft]	Grid East [US ft]	Grid North [US ft]	Latitude	Longitude	Closure Dist [ft]	Closure Dir [°]	DLS [°/100ft]	Build Rate [°/100ft]	Turn Rate [°/100ft]	Comments
21971.00	89.780	342.090	6906.33	15393.86	15186.27	-3167.54	1709489.39	14376756.57	39°35'23.0863"N	80°45'17.3667"W	15513.09	348.218	0.33	-0.33	-0.03	
22065.00	89.630	342.160	6906.81	15487.84	15275.73	-3196.39	1709460.55	14376846.00	39°35'23.9712"N	80°45'17.7321"W	15606.56	348.182	0.18	-0.16	0.07	
22160.00	89.600	340.480	6907.45	15582.84	15365.72	-3226.81	1709430.13	14376935.95	39°35'24.8614"N	80°45'18.1176"W	15700.88	348.140	1.77	-0.03	-1.77	
22255.00	90.120	340.340	6907.68	15677.83	15455.22	-3258.67	1709398.29	14377025.42	39°35'25.7468"N	80°45'18.5213"W	15795.02	348.094	0.57	0.55	-0.15	
22349.00	90.280	340.830	6907.35	15771.83	15543.87	-3289.91	1709367.06	14377114.04	39°35'26.6239"N	80°45'18.9174"W	15888.22	348.050	0.55	0.17	0.52	
22444.00	90.030	340.960	6907.10	15866.82	15633.64	-3321.01	1709335.98	14377203.77	39°35'27.5119"N	80°45'19.3114"W	15982.48	348.007	0.30	-0.26	0.14	
22538.00	90.060	340.750	6907.02	15960.82	15722.44	-3351.83	1709305.16	14377292.53	39°35'28.3903"N	80°45'19.7021"W	16075.76	347.965	0.23	0.03	-0.22	
22633.00	90.090	340.770	6906.90	16055.82	15812.13	-3383.14	1709273.87	14377382.19	39°35'29.2776"N	80°45'20.0989"W	16170.01	347.923	0.04	0.03	0.02	
22728.00	89.940	340.910	6906.87	16150.82	15901.87	-3414.32	1709242.70	14377471.89	39°35'30.1654"N	80°45'20.4940"W	16264.29	347.882	0.22	-0.16	0.15	
22823.00	90.090	340.590	6906.85	16245.82	15991.56	-3445.64	1709211.40	14377561.55	39°35'31.0526"N	80°45'20.8910"W	16358.56	347.841	0.37	0.16	-0.34	
22917.00	89.940	340.790	6906.82	16339.82	16080.27	-3476.72	1709180.32	14377650.22	39°35'31.9302"N	80°45'21.2850"W	16451.83	347.800	0.27	-0.16	0.21	
23012.00	89.910	340.410	6906.95	16434.81	16169.88	-3508.28	1709148.78	14377739.79	39°35'32.8166"N	80°45'21.6849"W	16546.09	347.759	0.40	-0.03	-0.40	
23106.00	89.780	340.930	6907.20	16528.81	16258.58	-3539.39	1709117.68	14377828.46	39°35'33.6941"N	80°45'22.0793"W	16639.37	347.719	0.57	-0.14	0.55	
23201.00	89.910	340.640	6907.46	16623.81	16348.29	-3570.66	1709086.43	14377918.13	39°35'34.5815"N	80°45'22.4756"W	16733.68	347.679	0.33	0.14	-0.31	
23296.00	89.880	340.570	6907.63	16718.80	16437.89	-3602.21	1709054.89	14378007.70	39°35'35.4680"N	80°45'22.8755"W	16827.96	347.640	0.08	-0.03	-0.07	
23390.00	89.880	340.830	6907.83	16812.80	16526.61	-3633.27	1709023.83	14378096.39	39°35'36.3456"N	80°45'23.2692"W	16921.28	347.601	0.28	0.00	0.28	
23485.00	90.060	340.900	6907.88	16907.80	16616.36	-3664.41	1708992.71	14378186.10	39°35'37.2335"N	80°45'23.6639"W	17015.62	347.564	0.20	0.19	0.07	
23579.00	89.880	340.850	6907.93	17001.80	16705.17	-3695.21	1708961.92	14378274.88	39°35'38.1121"N	80°45'24.0543"W	17108.99	347.527	0.20	-0.19	-0.05	
23674.00	89.880	340.710	6908.13	17096.80	16794.88	-3726.49	1708930.66	14378364.55	39°35'38.9995"N	80°45'24.4506"W	17203.33	347.490	0.15	0.00	-0.15	
23706.00	90.000	340.720	6908.16	17128.80	16825.08	-3737.05	1708920.10	14378394.74	39°35'39.2983"N	80°45'24.5846"W	17235.11	347.477	0.38	0.38	0.03	
23731.00‡	90.000	340.720	6908.16	17153.80	16848.68	-3745.31	1708911.84	14378418.33	39°35'39.5317"N	80°45'24.6892"W	17259.94	347.467	0.00	0.00	0.00	Projected MD at TD: 23731'



Actual Wellpath Report

Welder Unit 1H AWP Proj: 23731'
Page 11 of 13



REFERENCE WELLPATH IDENTIFICATION			
Operator	ANTERO RESOURCES CORPORATION	Well	Welder Unit 1H
Field	Wetzel	API	47-103-03461-0000
Facility	Journeyman Pad	Wellbore	Welder Unit 1H AWB
Slot	Slot F		

HOLE & CASING SECTIONS - Ref Wellbore: Welder Unit 1H AWB Ref Wellpath: Welder Unit 1H AWP Proj: 23731'									
String/Diameter	Start MD [ft]	End MD [ft]	Interval [ft]	Start TVD [ft]	End TVD [ft]	Start N/S [ft]	Start E/W [ft]	End N/S [ft]	End E/W [ft]
20in Conductor	30.00	130.00	100.00	30.00	130.00	0.00	0.00	-0.37	-0.60
17.5in Open Hole	130.00	368.00	238.00	130.00	367.96	-0.37	-0.60	-1.65	-4.43
13.375in Casing Surface	30.00	343.00	313.00	30.00	342.96	0.00	0.00	-1.55	-4.07
12.25in Open Hole	368.00	2650.00	2282.00	367.96	2561.54	-1.65	-4.43	282.39	486.81
9.625in Casing Intermediate	30.00	2630.00	2600.00	30.00	2542.77	0.00	0.00	278.96	480.83
8.75in Open Hole	2650.00	6515.00	3865.00	2561.54	6228.83	282.39	486.81	889.32	1532.39
8.5in Open Hole	6515.00	23731.00	17216.00	6228.83	6908.16	889.32	1532.39	16848.68	-3745.31
5.5in Casing Production	30.00	23711.00	23681.00	30.00	6908.16	0.00	0.00	16829.80	-3738.70

TARGETS								
Name	TVD [ft]	North [ft]	East [ft]	Grid East [US ft]	Grid North [US ft]	Latitude	Longitude	Shape
Welder Unit 1H POE Rev-2	6915.00	1454.76	1518.79	1714173.86	14363030.50	39°33'7.2445"N	80°44'18.0178"W	point
Welder Unit 1H BHL Rev-2	6942.00	16864.90	-3753.55	1708903.61	14378434.54	39°35'39.6922"N	80°45'24.7939"W	point
Welder Unit 1H LP Rev-2	6942.00	1639.06	1455.73	1714110.83	14363214.73	39°33'9.0679"N	80°44'18.8160"W	point
Welder Unit 1H 50' L/R Hard Line	7250.00	9159.83	-1117.38	1711538.73	14370732.52	39°34'23.4698"N	80°44'51.3958"W	rectangle
2D Rectangle 16287.1 x 100.								



Actual Wellpath Report

Welder Unit 1H AWP Proj: 23731'

Page 12 of 13



REFERENCE WELLPATH IDENTIFICATION			
Operator	ANTERO RESOURCES CORPORATION	Well	Welder Unit 1H
Field	Wetzel	API	47-103-03461-0000
Facility	Journeyman Pad	Wellbore	Welder Unit 1H AWB
Slot	Slot F		

WELLPATH COMPOSITION - Ref Wellbore: Welder Unit 1H AWB Ref Wellpath: Welder Unit 1H AWP Proj: 23731'						
Start MD [ft]	End MD [ft]	Positional Uncertainty Model	Log Name/Comment	Wellbore	Survey Date	
30.00	278.00	Gyrodatta 2015 - GC+WIR+DPIPE	01 Gyrodatta MS Gyro <17-1/2"> (100'-278')	Welder Unit 1H AWB	09/Jan/2022	
278.00	2582.00	BH NaviTrak (2019) (Axial Corr+HRGM)	02 APS EM <12-1/4"> (278')(416'-2582')	Welder Unit 1H AWB	09/Jan/2022	
2582.00	6453.00	BH NaviTrak (2019) (Axial Corr+HRGM)	03 APS EM <8-3/4"> (2582')(2663'-6453')	Welder Unit 1H AWB	06/Mar/2022	
6453.00	23731.00	BH AutoTrak Curve/eXpress (2019) (HRGM, Short spacing)	04 BH AT Curve <8-1/2"> (6453')(6490'-23706')	Welder Unit 1H AWB	06/Mar/2022	



Actual Wellpath Report

Welder Unit 1H AWP Proj: 23731'

Page 13 of 13



REFERENCE WELLPATH IDENTIFICATION			
Operator	ANTERO RESOURCES CORPORATION	Well	Welder Unit 1H
Field	Wetzel	API	47-103-03461-0000
Facility	Journeyman Pad	Wellbore	Welder Unit 1H AWB
Slot	Slot F		

COMMENTS
<p>Wellpath general comments API: 47-103-03461-0000 BH Job #: 111180637 Rig: H&P 519 Duration: 3/9/2022-3/14/2022 Gyrodata MS Gyro <17-1/2"> (100'-278') APS EM <12-1/4"> (278')(416'-2582') APS EM <8-3/4"> (2582')(2663'-6453') BH AT Curve <8-1/2"> (6453')(6490'-23706') Sycamore: 6897' MD Middlesex: 7055' MD Burkett: 7205' MD Tully: 7256' MD Marcellus POE: 7449' MD Projected MD at TD: 23731'</p>