



# ANTERO RESOURCES CORPORATION



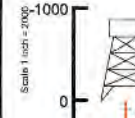
Location: Wetzel County, WV  
 Field: Wetzel  
 Facility: Journeyman Pad

Slot: Slot A  
 Well: Trader Unit 1H  
 Wellbore: Trader Unit 1H PWB

Plot reference wellbore is Trader Unit 1H PWP Rev-A.1	Grid System: NAD27 / UTM Zone 17 North, US feet
True vertical depths are referenced to H&P 519 (RKB)	North Reference: Grid north
Reference wellpath measured depths are referenced to H&P 519 (RKB)	Scale: True distance
H&P 519 (RKB) to Mean Sea Level: 1154 feet	Coordinates are in feet referenced to Slot
Mean Sea Level to Ground level (At Slot: Slot A): -1154 feet	Depths are in feet
Official wellpath MDs are referenced to each path's default MD datum	Created by: ehsaryar on 2022-02-08; Database: WA_MPL_EASTERNUS_Dein

Location Information						
Facility Name		Grid East (US ft)	Grid North (US ft)	Latitude	Longitude	
Journeyman Pad		1712638.290	14361600.746	39°32'53.1520"N	80°44'37.6810"W	
Slot	Local N (ft)	Local E (ft)	Grid East (US ft)	Grid North (US ft)	Latitude	Longitude
Slot A	36.67	-25.11	1712612.190	14351837.400	39°32'53.5151"N	80°44'38.0130"W
Comment: Trader Unit 1H						
H&P 519 (RKB) to Ground level (At Slot: Slot A)			30ft			
Mean Sea Level to Ground level (At Slot: Slot A)			-1154ft			
H&P 519 (RKB) to Mean Sea Level			1184ft			

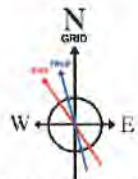
Well Profile Data								
Design Comment	MD (ft)	Inc (")	Az (°)	TVD (ft)	Local N (ft)	Local E (ft)	DLS (1/100ft)	VS (ft)
Tie On	30.00	0.000	354.885	30.00	0.00	0.00	0.00	0.00
KOP 1	2630.00	0.000	354.885	2630.00	0.00	0.00	0.00	0.00
End of Build	3515.05	17.701	354.885	3501.05	135.09	-12.09	2.00	131.75
Curve KOP	8512.85	17.701	354.885	6356.91	1042.95	-93.36	0.00	1017.18
Turn / Avoid NGZ	8564.94	17.700	341.150	6406.55	1058.34	-96.62	8.00	1032.79
PDE	7275.12	74.514	341.147	6879.00	1523.06	-255.30	8.00	1523.86
Landing Pt.	7488.69	90.000	341.147	6905.00	1704.03	-317.09	8.00	1715.09
BHL	22875.75	90.000	341.147	6905.00	16284.50	-5295.83	0.00	17122.16



Gyrodata MS Gyro <17-1/2"> (100'-300') : 0.57" Inc, 100.00ft MD, 100.00ft TVD, 0.11ft VS  
 Gyrodata MS Gyro <12-1/4"> (300')(400'-561') : 0.26" Inc, 400.00ft MD, 399.99ft TVD, 1.03ft VS  
 APS EM <12-1/4"> (561')(598'-2517') : 0.31" Inc, 598.00ft MD, 597.98ft TVD, 1.64ft VS

Well Data			
Slot	Well	Wellbore	Wellpath
Slot A	Trader Unit 1H	Trader Unit 1H AWB	Trader Unit 1H AWP Proj: 22859'
Slot A	Trader Unit 1H	Trader Unit 1H PWB	Trader Unit 1H PWP Rev-A.1

APS EM <8-3/4"> (2517')(2571'-6833') : 0.23" Inc, 2571.00ft MD, 2570.98ft TVD, 2.08ft VS



User specified (HDGM) Dip: 66.49° Field: 51851 nT  
 Magnetic North is 7.75 degrees West of True North (at 25/Jan/2022)  
 Grid North is 0.16 degrees East of True North  
 To correct azimuth from True to Grid subtract 0.16 degrees  
 To correct azimuth from Magnetic to Grid subtract 7.91 degrees

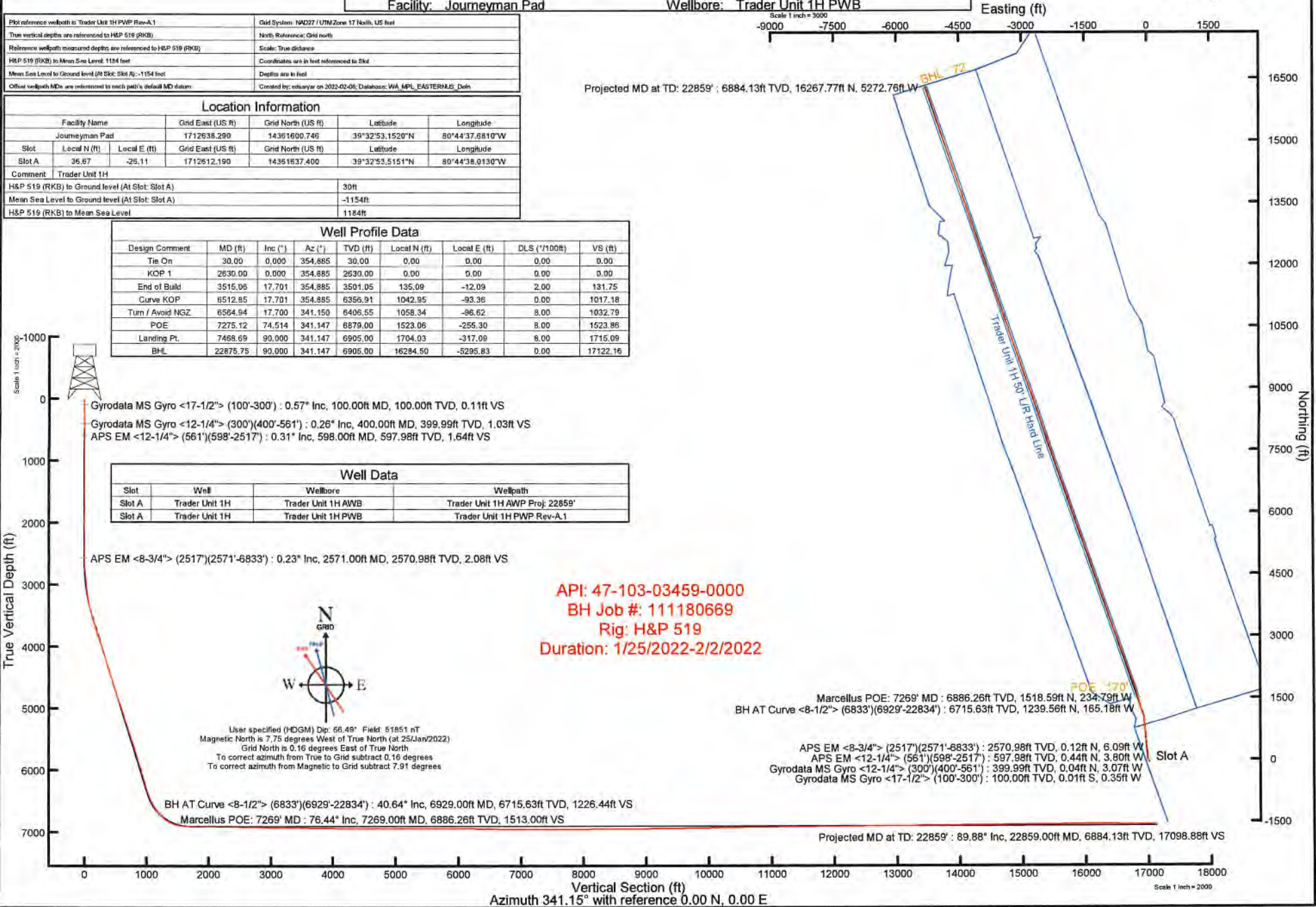
BH AT Curve <8-1/2"> (6833')(6929'-22834') : 40.64" Inc, 6929.00ft MD, 6715.63ft TVD, 1226.44ft VS  
 Marcellus POE: 7269' MD : 76.44" Inc, 7269.00ft MD, 6886.26ft TVD, 1513.00ft VS

API: 47-103-03459-0000  
 BH Job #: 111180669  
 Rig: H&P 519  
 Duration: 1/25/2022-2/2/2022

Marcellus POE: 7269' MD : 6886.26ft TVD, 1518.59ft N, 234.79ft W  
 BH AT Curve <8-1/2"> (6833')(6929'-22834') : 6715.63ft TVD, 1239.56ft N, 165.18ft W

APS EM <8-3/4"> (2517')(2571'-6833') : 2570.98ft TVD, 0.12ft N, 6.09ft W  
 APS EM <12-1/4"> (561')(598'-2517') : 597.98ft TVD, 0.44ft N, 3.80ft W  
 Gyrodata MS Gyro <12-1/4"> (300')(400'-561') : 399.99ft TVD, 0.04ft N, 3.07ft W  
 Gyrodata MS Gyro <17-1/2"> (100'-300') : 100.00ft TVD, 0.01ft S, 0.35ft W

Projected MD at TD: 22859' : 89.88" Inc, 22859.00ft MD, 6884.13ft TVD, 17098.88ft VS



Vertical Section (ft)  
 Azimuth 341.15° with reference 0.00 N, 0.00 E



# Actual Wellpath Report

Trader Unit 1H AWP Proj: 22859'  
Page 1 of 12



REFERENCE WELLPATH IDENTIFICATION			
Operator	ANTERO RESOURCES CORPORATION	Well	Trader Unit 1H
Field	Wetzel	API	47-103-03459-0000
Facility	Journeyman Pad	Wellbore	Trader Unit 1H AWB
Slot	Slot A		

REPORT SETUP INFORMATION			
Projection System	NAD27 / UTM Zone 17 North, US feet	Software System	WellArchitect® 6.0
North Reference	Grid	User	Edsaryar
Scale	0.999606	Report Generated	06/Feb/2022 at 19:41
Convergence at slot	0.16° East	Database	WA_MPL_EASTERNUS_Defn

WELLPATH LOCATION						
	Local coordinates		Grid coordinates		Geographic coordinates	
	North[ft]	East[ft]	Easting[US ft]	Northing[US ft]	Latitude	Longitude
Slot Location	36.67	-26.11	1712612.19	14361637.40	39°32'53.5151"N	80°44'38.0130"W
Facility Reference Pt			1712638.29	14361600.75	39°32'53.1520"N	80°44'37.6810"W
Field Reference Pt			0.00	0.00	0°00'0.0000"	85°29'19.3013"W

WELLPATH DATUM			
Calculation method	Minimum curvature	H&P 519 (RKB) to Facility Vertical Datum	1184.00ft
Horizontal Reference Pt	Slot	H&P 519 (RKB) to Mean Sea Level	1184.00ft
Vertical Reference Pt	H&P 519 (RKB)	H&P 519 (RKB) to Ground Level at Slot (Slot A)	30.00ft
MD Reference Pt	H&P 519 (RKB)	Section Origin	N 0.00, E 0.00 ft
Field Vertical Reference	Mean Sea Level	Section Azimuth	341.15°



# Actual Wellpath Report

Trader Unit 1H AWP Proj: 22859'

Page 2 of 12



REFERENCE WELLPATH IDENTIFICATION			
Operator	ANTERO RESOURCES CORPORATION	Well	Trader Unit 1H
Field	Wetzel	API	47-103-03459-0000
Facility	Journeyman Pad	Wellbore	Trader Unit 1H AWB
Slot	Slot A		

WELLPATH DATA (250 stations) † = interpolated, ‡ = extrapolated station																
MD	Inclination	Azimuth	TVD	Vert Sect	North	East	Grid East	Grid North	Latitude	Longitude	Closure Dist	Closure Dir	DLS	Build Rate	Turn Rate	Comments
(ft)	(°)	(°)	(ft)	(ft)	(ft)	(ft)	(US ft)	(US ft)			(ft)	(°)	("/100ft)	("/100ft)	("/100ft)	
0.00	0.00	268.790	0.00	0.00	0.00	0.00	1712612.19	14361637.40	39°32'53.5151"N	80°44'38.0130"W	0.00	0.000	0.00	0.00	0.00	
30.00	0.000	268.790	30.00	0.00	0.00	0.00	1712612.19	14361637.40	39°32'53.5151"N	80°44'38.0130"W	0.00	0.000	0.00	0.00	0.00	
100.00	0.570	268.790	100.00	0.11	-0.01	-0.35	1712611.84	14361637.39	39°32'53.5151"N	80°44'38.0174"W	0.35	268.790	0.81	0.81	0.00	Gyrodata MS Gyro <17-1/2"> (100'-300')
200.00	0.660	265.380	199.99	0.40	-0.06	-1.42	1712610.77	14361637.34	39°32'53.5145"N	80°44'38.0311"W	1.42	267.409	0.10	0.09	-3.41	
300.00	0.500	273.590	299.99	0.71	-0.08	-2.43	1712609.76	14361637.32	39°32'53.5144"N	80°44'38.0440"W	2.43	268.036	0.18	-0.16	8.21	
400.00	0.260	295.500	399.99	1.03	0.04	-3.07	1712609.12	14361637.44	39°32'53.5156"W	80°44'38.0522"W	3.07	270.778	0.28	-0.24	21.91	Gyrodata MS Gyro <12-1/4"> (300')(400'-561')
500.00	0.260	289.460	499.98	1.33	0.21	-3.49	1712608.70	14361637.61	39°32'53.5174"N	80°44'38.0575"W	3.49	273.526	0.03	0.00	-6.04	
561.00	0.180	316.730	560.98	1.50	0.33	-3.68	1712608.51	14361637.73	39°32'53.5185"N	80°44'38.0600"W	3.70	275.131	0.21	-0.13	44.70	
598.00	0.310	312.600	597.98	1.64	0.44	-3.80	1712608.39	14361637.84	39°32'53.5196"N	80°44'38.0615"W	3.82	276.622	0.36	0.35	-11.16	APS EM <12-1/4"> (561')(598'-2517')
690.00	0.210	356.670	689.98	2.03	0.78	-3.99	1712608.20	14361638.18	39°32'53.5229"N	80°44'38.0639"W	4.07	281.027	0.23	-0.11	47.90	
781.00	0.160	346.940	780.98	2.31	1.07	-4.03	1712608.16	14361638.47	39°32'53.5258"N	80°44'38.0644"W	4.17	284.845	0.06	-0.05	-10.69	
873.00	0.000	352.090	872.98	2.44	1.19	-4.06	1712608.13	14361638.59	39°32'53.5270"N	80°44'38.0648"W	4.23	286.383	0.17	-0.17	0.00	
964.00	0.130	253.600	963.98	2.44	1.16	-4.16	1712608.03	14361638.56	39°32'53.5268"N	80°44'38.0660"W	4.32	285.641	0.14	0.14	0.00	
1054.00	0.260	226.310	1053.98	2.36	0.99	-4.40	1712607.79	14361638.39	39°32'53.5251"N	80°44'38.0692"W	4.51	282.723	0.17	0.14	-30.32	
1149.00	0.070	268.120	1148.98	2.29	0.84	-4.62	1712607.58	14361638.24	39°32'53.5236"N	80°44'38.0719"W	4.69	280.351	0.22	-0.20	44.01	
1244.00	0.070	155.680	1243.98	2.25	0.79	-4.65	1712607.54	14361638.19	39°32'53.5231"N	80°44'38.0723"W	4.72	279.622	0.12	0.00	-118.36	
1338.00	0.240	38.520	1337.98	2.30	0.89	-4.50	1712607.69	14361638.29	39°32'53.5241"N	80°44'38.0705"W	4.59	281.179	0.30	0.18	-124.64	
1433.00	0.100	82.000	1432.98	2.39	1.06	-4.30	1712607.89	14361638.46	39°32'53.5257"N	80°44'38.0678"W	4.43	283.820	0.19	-0.15	45.77	
1528.00	0.150	46.320	1527.98	2.43	1.15	-4.13	1712608.07	14361638.55	39°32'53.5267"N	80°44'38.0656"W	4.28	285.634	0.09	0.05	-37.56	
1623.00	0.140	256.650	1622.98	2.49	1.21	-4.15	1712608.04	14361638.61	39°32'53.5273"N	80°44'38.0659"W	4.32	286.306	0.29	-0.01	-157.55	
1718.00	0.190	232.700	1717.98	2.45	1.09	-4.39	1712607.80	14361638.49	39°32'53.5261"N	80°44'38.0690"W	4.52	283.971	0.09	0.05	-25.21	
1812.00	0.120	162.480	1811.98	2.30	0.90	-4.48	1712607.71	14361638.30	39°32'53.5242"N	80°44'38.0702"W	4.57	281.395	0.20	-0.07	-74.70	
1907.00	0.210	195.430	1906.98	2.06	0.64	-4.50	1712607.69	14361638.04	39°32'53.5216"N	80°44'38.0704"W	4.54	278.105	0.13	0.09	34.68	
2001.00	0.060	291.790	2000.98	1.95	0.49	-4.59	1712607.60	14361637.89	39°32'53.5201"N	80°44'38.0716"W	4.62	276.129	0.24	-0.16	102.51	
2096.00	0.120	224.800	2095.98	1.94	0.44	-4.71	1712607.49	14361637.84	39°32'53.5196"N	80°44'38.0731"W	4.73	275.350	0.12	0.06	-70.52	
2191.00	0.180	283.050	2190.98	1.97	0.40	-4.92	1712607.27	14361637.80	39°32'53.5193"N	80°44'38.0758"W	4.94	274.690	0.16	0.06	61.32	
2286.00	0.150	229.950	2285.98	2.01	0.36	-5.16	1712607.03	14361637.76	39°32'53.5188"N	80°44'38.0789"W	5.17	273.961	0.16	-0.03	-55.89	
2380.00	0.260	239.080	2379.98	1.92	0.17	-5.44	1712606.75	14361637.57	39°32'53.5170"N	80°44'38.0824"W	5.44	271.777	0.12	0.12	9.71	
2475.00	0.120	267.820	2474.98	1.90	0.05	-5.72	1712606.47	14361637.45	39°32'53.5158"N	80°44'38.0861"W	5.72	270.542	0.17	-0.15	30.25	
2517.00	0.260	283.880	2516.98	1.96	0.08	-5.86	1712606.33	14361637.48	39°32'53.5160"N	80°44'38.0878"W	5.86	270.737	0.35	0.33	38.24	

*OK*



# Actual Wellpath Report

Trader Unit 1H AWP Proj: 22859'

Page 3 of 12



REFERENCE WELLPATH IDENTIFICATION			
Operator	ANTERO RESOURCES CORPORATION	Well	Trader Unit 1H
Field	Wetzel	API	47-103-03459-0000
Facility	Journeyman Pad	Wellbore	Trader Unit 1H AWB
Slot	Slot A		

WELLPATH DATA (250 stations)																
MD [ft]	Inclination [°]	Azimuth [°]	TVD [ft]	Vert Sect [ft]	North [ft]	East [ft]	Grid East [US ft]	Grid North [US ft]	Latitude	Longitude	Closure Dist [ft]	Closure Dir [°]	DLS [°/100ft]	Build Rate [°/100ft]	Turn Rate [°/100ft]	Comments
2571.00	0.230	277.410	2570.98	2.08	0.12	-6.09	1712606.11	14361637.52	39°32'53.5165"N	80°44'38.0907"W	6.09	271.118	0.08	-0.06	-11.98	APS EM <8-3/4"> (2571')(2571'-6833')
2666.00	3.850	353.090	2665.90	5.28	3.31	-6.66	1712605.53	14361640.71	39°32'53.5480"N	80°44'38.0979"W	7.44	296.433	4.00	3.81	79.66	
2761.00	5.390	352.630	2760.59	12.78	10.90	-7.62	1712604.58	14361648.30	39°32'53.6231"N	80°44'38.1098"W	13.30	325.064	1.62	1.62	-0.48	
2855.00	5.270	343.870	2854.19	21.42	19.43	-9.38	1712602.81	14361656.82	39°32'53.7074"N	80°44'38.1320"W	21.57	334.225	0.87	-0.13	-9.32	
2950.00	5.660	4.160	2948.76	30.09	28.29	-10.25	1712601.94	14361665.68	39°32'53.7950"N	80°44'38.1429"W	30.09	340.078	2.06	0.41	21.36	
3044.00	5.710	12.930	3042.30	38.33	37.47	-8.87	1712603.32	14361674.86	39°32'53.8857"N	80°44'38.1249"W	38.51	346.681	0.92	0.05	9.33	
3139.00	8.440	10.250	3136.57	48.44	48.94	-6.57	1712605.62	14361686.32	39°32'53.9990"N	80°44'38.0951"W	49.38	352.351	2.89	2.87	-2.82	
3236.00	11.790	11.450	3232.05	63.22	65.66	-3.34	1712608.85	14361703.04	39°32'54.1642"N	80°44'38.0532"W	65.75	357.090	3.46	3.45	1.24	
3331.00	14.410	8.680	3324.57	82.09	86.87	0.37	1712612.56	14361724.23	39°32'54.3736"N	80°44'38.0051"W	86.87	0.246	2.84	2.76	-2.92	
3426.00	16.240	4.640	3416.19	104.75	111.79	3.23	1712615.42	14361749.15	39°32'54.6199"N	80°44'37.9677"W	111.84	1.656	2.23	1.93	-4.25	
3521.00	18.340	0.570	3506.90	131.04	139.98	4.46	1712616.64	14361777.33	39°32'54.8985"N	80°44'37.9510"W	140.06	1.823	2.55	2.21	-4.28	
3616.00	17.310	353.900	3597.35	158.92	168.99	3.10	1712615.29	14361806.32	39°32'55.1852"N	80°44'37.9673"W	169.02	1.052	2.41	-1.08	-7.02	
3711.00	16.230	348.190	3688.31	185.88	196.04	-1.12	1712611.07	14361833.36	39°32'55.4527"N	80°44'38.0201"W	196.04	359.674	2.07	-1.14	-6.01	
3806.00	17.710	347.580	3779.17	213.42	223.15	-6.94	1712605.25	14361860.46	39°32'55.7207"N	80°44'38.0935"W	223.25	358.218	1.57	1.56	-0.64	
3900.00	18.020	346.010	3868.64	242.12	251.22	-13.53	1712598.66	14361888.52	39°32'55.9984"N	80°44'38.1766"W	251.58	356.917	0.61	0.33	-1.67	
3995.00	19.060	351.850	3958.72	272.00	280.83	-19.28	1712592.91	14361918.12	39°32'56.2912"N	80°44'38.2490"W	281.49	356.072	2.24	1.09	6.15	
4090.00	18.860	357.360	4048.57	301.99	311.53	-22.19	1712590.01	14361948.81	39°32'56.5947"N	80°44'38.2850"W	312.32	355.926	1.90	-0.21	5.80	
4184.00	17.620	355.630	4137.84	330.36	340.89	-23.97	1712588.22	14361978.16	39°32'56.8849"N	80°44'38.3067"W	341.73	355.977	1.44	-1.32	-1.84	
4279.00	15.860	352.000	4228.82	357.03	368.09	-26.88	1712585.32	14362005.34	39°32'57.1538"N	80°44'38.3427"W	369.07	355.824	2.15	-1.85	-3.82	
4374.00	16.850	355.770	4319.97	383.10	394.67	-29.70	1712582.50	14362031.92	39°32'57.4168"N	80°44'38.3778"W	395.79	355.697	1.53	1.04	3.97	
4468.00	19.420	356.410	4409.30	411.37	423.86	-31.68	1712580.52	14362061.09	39°32'57.7052"N	80°44'38.4021"W	425.04	355.725	2.74	2.73	0.68	
4563.00	17.700	347.900	4499.37	440.95	453.75	-35.70	1712576.50	14362090.97	39°32'58.0007"N	80°44'38.4523"W	455.16	355.501	3.37	-1.81	-8.96	
4658.00	16.610	353.910	4590.15	468.54	481.38	-40.17	1712572.04	14362118.59	39°32'58.2738"N	80°44'38.5083"W	483.05	355.230	2.19	-1.15	6.33	
4752.00	17.970	357.710	4679.90	495.54	509.23	-42.17	1712570.03	14362146.43	39°32'58.5492"N	80°44'38.5329"W	510.97	355.266	1.88	1.45	4.04	
4847.00	20.720	0.780	4769.53	525.43	540.68	-42.53	1712569.68	14362177.87	39°32'58.8600"N	80°44'38.5363"W	542.35	355.502	3.09	2.89	3.23	
4942.00	20.120	357.150	4858.57	556.96	573.81	-43.11	1712569.09	14362210.98	39°32'59.1874"N	80°44'38.5425"W	575.43	355.703	1.47	-0.63	-3.82	
5037.00	18.450	348.010	4948.25	587.60	604.84	-47.05	1712565.16	14362242.00	39°32'59.4942"N	80°44'38.5917"W	606.67	355.552	3.63	-1.76	-9.62	
5131.00	18.040	351.600	5037.53	616.69	633.79	-52.27	1712559.94	14362270.94	39°32'59.7805"N	80°44'38.6572"W	635.94	355.286	1.27	-0.44	3.82	
5226.00	17.670	345.450	5127.96	645.53	662.30	-58.04	1712554.17	14362299.44	39°33'0.0624"N	80°44'38.7298"W	664.84	354.992	2.02	-0.39	-6.47	
5321.00	17.560	346.150	5218.51	674.19	690.17	-65.09	1712547.12	14362327.30	39°33'0.3381"N	80°44'38.8189"W	693.23	354.612	0.25	-0.12	0.74	



# Actual Wellpath Report

Trader Unit 1H AWP Proj: 22859'

Page 4 of 12



REFERENCE WELLPATH IDENTIFICATION			
Operator	ANTERO RESOURCES CORPORATION	Well	Trader Unit 1H
Field	Wetzel	API	47-103-03459-0000
Facility	Journeyman Pad	Wellbore	Trader Unit 1H AWB
Slot	Slot A		

WELLPATH DATA (250 stations) † = interpolated, ‡ = extrapolated station																
MD	Inclination	Azimuth	TVD	Vert Sect	North	East	Grid East	Grid North	Latitude	Longitude	Closure Dist	Closure Dir	DLS	Build Rate	Turn Rate	Comments
(ft)	(°)	(°)	(ft)	(ft)	(ft)	(ft)	(US ft)	(US ft)			(ft)	(°)	(°/100ft)	(°/100ft)	(°/100ft)	
5415.00	18.470	353.170	5307.91	702.88	718.73	-70.26	1712541.96	14362355.84	39°33'0.6205"N	80°44'38.8838"W	722.15	354.417	2.50	0.97	7.47	
5509.00	18.510	351.590	5397.06	732.12	748.27	-74.21	1712538.01	14362385.38	39°33'0.9126"N	80°44'38.9332"W	751.94	354.336	0.53	0.04	-1.68	
5604.00	18.660	346.130	5487.11	762.09	777.95	-80.06	1712532.16	14362415.04	39°33'1.2060"N	80°44'39.0068"W	782.06	354.124	1.84	0.16	-5.75	
5699.00	19.280	353.760	5576.96	792.54	808.30	-85.41	1712526.82	14362445.38	39°33'1.5061"N	80°44'39.0739"W	812.80	353.968	2.69	0.65	8.03	
5793.00	18.520	5.100	5665.93	821.34	838.60	-85.77	1712526.46	14362475.67	39°33'1.8057"N	80°44'39.0774"W	842.98	354.160	3.98	-0.81	12.06	
5888.00	18.010	3.100	5756.14	848.75	868.30	-83.63	1712528.59	14362505.35	39°33'2.0991"N	80°44'39.0491"W	872.32	354.498	0.85	-0.54	-2.11	
5982.00	18.380	359.360	5845.44	876.31	897.63	-83.01	1712529.21	14362534.67	39°33'2.3889"N	80°44'39.0401"W	901.46	354.716	1.30	0.39	-3.98	
6077.00	18.520	355.010	5935.56	905.18	927.64	-84.49	1712527.73	14362564.67	39°33'2.6856"N	80°44'39.0579"W	931.48	354.796	1.46	0.15	-4.58	
6171.00	16.240	356.620	6025.27	932.35	955.63	-86.57	1712525.66	14362592.66	39°33'2.9623"N	80°44'39.0834"W	959.55	354.824	2.48	-2.43	1.71	
6266.00	17.090	354.440	6116.28	958.74	982.79	-88.70	1712523.52	14362619.80	39°33'3.2308"N	80°44'39.1096"W	986.78	354.843	1.11	0.89	-2.29	
6360.00	15.810	352.200	6206.43	984.75	1009.22	-91.78	1712520.45	14362646.22	39°33'3.4921"N	80°44'39.1480"W	1013.39	354.804	1.52	-1.36	-2.38	
6455.00	16.690	350.940	6297.63	1010.89	1035.52	-95.68	1712516.55	14362672.51	39°33'3.7521"N	80°44'39.1969"W	1039.93	354.721	1.00	0.93	-1.33	
6550.00	19.550	338.200	6387.95	1040.23	1063.76	-103.74	1712508.49	14362700.74	39°33'4.0315"N	80°44'39.2987"W	1068.81	354.430	5.13	3.01	-13.41	
6644.00	24.520	336.310	6475.06	1075.39	1096.25	-117.42	1712494.81	14362733.22	39°33'4.3529"N	80°44'39.4722"W	1102.52	353.886	5.34	5.29	-2.01	
6733.00†	29.341	340.607	6554.39	1115.63	1133.76	-132.10	1712480.15	14362770.71	39°33'4.7240"N	80°44'39.6581"W	1141.42	353.354	5.84	5.42	4.83	Sycamore: 6733' MD
6739.00	29.670	340.850	6559.61	1118.58	1136.54	-133.07	1712479.17	14362773.49	39°33'4.7516"N	80°44'39.6705"W	1144.31	353.322	5.84	5.49	4.05	
6833.00	34.130	342.690	6639.40	1168.23	1183.72	-148.56	1712463.69	14362820.65	39°33'5.2183"N	80°44'39.8665"W	1193.01	352.847	4.86	4.74	1.96	
6883.00†	37.519	343.449	6679.93	1197.48	1211.72	-157.07	1712455.18	14362848.64	39°33'5.4952"N	80°44'39.9741"W	1221.86	352.614	6.84	6.78	1.52	Middlesex: 6883' MD
6929.00	40.640	344.050	6715.63	1226.44	1239.56	-165.18	1712447.08	14362876.46	39°33'5.7706"N	80°44'40.0767"W	1250.51	352.410	6.84	6.79	1.31	BH AT Curve <8-1/2"> (6833')(6929'-22834')
7021.00†	51.278	346.918	6779.51	1292.27	1303.51	-181.58	1712430.68	14362940.39	39°33'6.4031"N	80°44'40.2838"W	1316.10	352.069	11.78	11.56	3.12	Burkett: 7021' MD
7023.00	51.510	346.970	6780.75	1293.82	1305.03	-181.94	1712430.32	14362941.92	39°33'6.4182"N	80°44'40.2882"W	1317.65	352.063	11.78	11.60	2.61	
7070.00†	56.517	347.017	6808.36	1331.64	1342.08	-190.49	1712421.77	14362978.94	39°33'6.7845"N	80°44'40.3961"W	1355.53	351.921	10.65	10.65	0.10	Tully: 7070' MD
7118.00	61.630	347.060	6833.02	1372.59	1382.19	-199.73	1712412.54	14363019.04	39°33'7.1812"N	80°44'40.5125"W	1396.54	351.778	10.65	10.65	0.09	
7213.00	71.470	345.260	6870.78	1459.30	1466.69	-220.60	1712391.68	14363103.51	39°33'8.0170"N	80°44'40.7759"W	1483.19	351.447	10.50	10.36	-1.89	
7269.00†	76.443	344.169	6886.26	1513.00	1518.59	-234.79	1712377.49	14363155.38	39°33'8.5303"N	80°44'40.9552"W	1536.63	351.211	9.08	8.88	-1.97	Marcellus POE: 7269' MD
7308.00	79.910	343.420	6894.25	1551.13	1555.23	-245.45	1712366.84	14363192.02	39°33'8.8928"N	80°44'41.0899"W	1574.48	351.032	9.08	8.89	-1.89	
7402.00	86.430	345.980	6905.42	1644.22	1645.21	-270.05	1712342.25	14363281.96	39°33'9.7827"N	80°44'41.4007"W	1667.22	350.679	7.44	6.94	2.72	
7497.00	89.600	343.180	6908.71	1738.97	1736.71	-295.29	1712317.02	14363373.42	39°33'10.6878"N	80°44'41.7196"W	1761.64	350.350	4.45	3.34	-2.95	
7591.00	89.320	341.150	6909.60	1832.95	1826.18	-324.07	1712288.24	14363462.86	39°33'11.5728"N	80°44'42.0839"W	1854.72	349.937	2.18	-0.30	-2.16	
7686.00	89.140	340.480	6910.87	1927.94	1915.90	-355.29	1712257.04	14363552.54	39°33'12.4604"N	80°44'42.4792"W	1948.56	349.494	0.73	-0.19	-0.71	



# Actual Wellpath Report

Trader Unit 1H AWP Proj: 22859'

Page 5 of 12



REFERENCE WELLPATH IDENTIFICATION				
Operator	ANTERO RESOURCES CORPORATION		Well	Trader Unit 1H
Field	Wetzel		API	47-103-03459-0000
Facility	Journeyman Pad		Wellbore	Trader Unit 1H AWB
Slot	Slot A			

WELLPATH DATA (250 stations)																
MD (ft)	Inclination [°]	Azimuth [°]	TVD (ft)	Vert Sect (ft)	North (ft)	East (ft)	Grid East (US ft)	Grid North (US ft)	Latitude	Longitude	Closure Dist (ft)	Closure Dir [°]	DLS [°/100ft]	Build Rate [°/100ft]	Turn Rate [°/100ft]	Comments
7781.00	88.830	340.610	6912.56	2022.92	2005.46	-386.93	1712225.42	14363642.07	39°33'13.3464"N	80°44'42.8798"W	2042.45	349.080	0.35	-0.33	0.14	
7875.00	89.010	340.220	6914.33	2116.89	2094.01	-418.43	1712193.93	14363730.58	39°33'14.2224"N	80°44'43.2788"W	2135.40	348.700	0.46	0.19	-0.41	
7970.00	89.570	339.370	6915.51	2211.86	2183.15	-451.24	1712161.13	14363819.69	39°33'15.1044"N	80°44'43.6944"W	2229.30	348.322	1.07	0.59	-0.89	
8065.00	88.610	339.220	6917.01	2306.79	2272.01	-484.82	1712127.56	14363908.51	39°33'15.9835"N	80°44'44.1200"W	2323.16	347.954	1.02	-1.01	-0.16	
8159.00	88.950	340.340	6919.02	2400.74	2360.19	-517.30	1712095.09	14363996.66	39°33'16.8560"N	80°44'44.5315"W	2416.22	347.638	1.24	0.36	1.19	
8254.00	88.800	340.630	6920.88	2495.72	2449.72	-549.03	1712063.38	14364086.15	39°33'17.7416"N	80°44'44.9333"W	2510.49	347.368	0.34	-0.16	0.31	
8348.00	89.820	340.090	6922.01	2589.70	2538.24	-580.62	1712031.80	14364174.63	39°33'18.6174"N	80°44'45.3334"W	2603.80	347.115	1.23	1.09	-0.57	
8443.00	89.050	340.640	6922.95	2684.69	2627.71	-612.54	1711999.89	14364264.07	39°33'19.5026"N	80°44'45.7378"W	2698.16	346.878	1.00	-0.81	0.58	
8538.00	88.710	340.720	6924.81	2779.67	2717.34	-643.97	1711968.48	14364353.67	39°33'20.3893"N	80°44'46.1357"W	2792.61	346.668	0.37	-0.36	0.08	
8632.00	88.430	340.540	6927.15	2873.63	2805.99	-675.13	1711937.32	14364442.28	39°33'21.2663"N	80°44'46.5304"W	2886.07	346.472	0.35	-0.30	-0.19	
8727.00	90.090	340.980	6928.38	2968.62	2895.68	-706.44	1711906.03	14364531.93	39°33'22.1536"N	80°44'46.9266"W	2980.60	346.290	1.81	1.75	0.46	
8822.00	89.140	338.080	6929.02	3063.57	2984.67	-739.65	1711872.83	14364620.88	39°33'23.0340"N	80°44'47.3477"W	3074.95	346.081	3.21	-1.00	-3.05	
8916.00	89.910	338.940	6929.80	3157.46	3072.13	-774.09	1711838.41	14364708.31	39°33'23.8993"N	80°44'47.7842"W	3168.15	345.858	1.23	0.82	0.91	
9011.00	89.630	341.670	6930.18	3252.44	3161.56	-806.10	1711806.41	14364797.71	39°33'24.7841"N	80°44'48.1897"W	3262.71	345.696	2.89	-0.29	2.87	
9105.00	89.600	341.050	6930.81	3346.44	3250.63	-836.14	1711776.38	14364886.74	39°33'25.6652"N	80°44'48.5701"W	3356.44	345.575	0.66	-0.03	-0.66	
9200.00	89.600	342.010	6931.47	3441.43	3340.73	-866.24	1711746.29	14364976.81	39°33'26.5566"N	80°44'48.9511"W	3451.21	345.464	1.01	0.00	1.01	
9294.00	88.580	342.020	6932.97	3535.41	3430.13	-895.26	1711717.28	14365066.17	39°33'27.4409"N	80°44'49.3183"W	3545.03	345.372	1.09	-1.09	0.01	
9389.00	88.980	341.280	6934.99	3630.38	3520.27	-925.16	1711687.40	14365156.28	39°33'28.3327"N	80°44'49.6969"W	3639.81	345.275	0.89	0.42	-0.78	
9484.00	89.010	341.790	6936.66	3725.37	3610.37	-955.25	1711657.32	14365246.34	39°33'29.2239"N	80°44'50.0777"W	3734.60	345.180	0.54	0.03	0.54	
9578.00	88.710	341.500	6938.53	3819.35	3699.57	-984.84	1711627.74	14365335.50	39°33'30.1063"N	80°44'50.4524"W	3828.41	345.093	0.44	-0.32	-0.31	
9673.00	89.720	344.120	6939.83	3914.29	3790.31	-1012.91	1711599.68	14365426.21	39°33'31.0039"N	80°44'50.8075"W	3923.32	345.038	2.96	1.06	2.76	
9768.00	89.230	340.840	6940.70	4009.24	3880.88	-1041.50	1711571.10	14365516.75	39°33'31.8999"N	80°44'51.1693"W	4018.21	344.978	3.49	-0.52	-3.45	
9862.00	90.060	341.450	6941.28	4103.24	3969.84	-1071.88	1711540.73	14365605.66	39°33'32.7799"N	80°44'51.5540"W	4112.00	344.890	1.10	0.88	0.65	
9956.00	89.260	339.250	6941.84	4197.22	4058.35	-1103.49	1711509.14	14365694.15	39°33'33.6556"N	80°44'51.9544"W	4205.70	344.789	2.49	-0.85	-2.34	
10051.00	90.220	342.680	6942.27	4292.21	4148.14	-1134.47	1711478.17	14365783.90	39°33'34.5439"N	80°44'52.3467"W	4300.48	344.704	3.75	1.01	3.61	
10146.00	89.020	339.360	6942.90	4387.19	4237.96	-1165.36	1711447.29	14365873.69	39°33'35.4324"N	80°44'52.7379"W	4395.27	344.625	3.72	-1.26	-3.49	
10240.00	89.110	340.280	6944.43	4481.15	4326.18	-1197.78	1711414.88	14365961.87	39°33'36.3052"N	80°44'53.1487"W	4488.93	344.524	0.98	0.10	0.98	
10335.00	89.380	341.500	6945.69	4576.14	4415.94	-1228.88	1711383.80	14366051.59	39°33'37.1931"N	80°44'53.5425"W	4583.74	344.449	1.32	0.28	1.28	
10430.00	89.510	341.260	6946.61	4671.13	4505.96	-1259.21	1711353.48	14366141.57	39°33'38.0837"N	80°44'53.9266"W	4678.60	344.387	0.29	0.14	-0.25	
10524.00	90.860	342.430	6946.30	4765.12	4595.28	-1288.50	1711324.20	14366230.86	39°33'38.9672"N	80°44'54.2973"W	4772.50	344.337	1.90	1.44	1.24	



# Actual Wellpath Report

Trader Unit 1H AWP Proj: 22859'

Page 6 of 12



REFERENCE WELLPATH IDENTIFICATION			
Operator	ANTERO RESOURCES CORPORATION	Well	Trader Unit 1H
Field	Wetzel	API	47-103-03459-0000
Facility	Journeyman Pad	Wellbore	Trader Unit 1H AWB
Slot	Slot A		

WELLPATH DATA (250 stations)																
MD (ft)	Inclination [°]	Azimuth [°]	TVD (ft)	Vert Sect (ft)	North (ft)	East (ft)	Grid East (US ft)	Grid North (US ft)	Latitude	Longitude	Closure Dist (ft)	Closure Dir [°]	DLS (°/100ft)	Build Rate (°/100ft)	Turn Rate (°/100ft)	Comments
10619.00	89.510	342.280	6946.00	4860.10	4685.80	-1317.29	1711295.42	14366321.35	39°33'39.8627"N	80°44'54.6617"W	4867.44	344.298	1.43	-1.42	-0.16	
10713.00	89.480	341.880	6946.82	4954.08	4775.24	-1346.22	1711266.51	14366410.75	39°33'40.7474"N	80°44'55.0278"W	4961.37	344.256	0.43	-0.03	-0.43	
10808.00	89.970	340.850	6947.28	5049.08	4865.26	-1376.57	1711236.16	14366500.73	39°33'41.6379"N	80°44'55.4122"W	5056.25	344.202	1.20	0.52	-1.08	
10902.00	89.600	341.070	6947.63	5143.08	4954.11	-1407.24	1711205.51	14366589.55	39°33'42.5170"N	80°44'55.8006"W	5150.10	344.143	0.46	-0.39	0.23	
10997.00	90.580	340.770	6947.48	5238.08	5043.88	-1438.29	1711174.47	14366679.29	39°33'43.4051"N	80°44'56.1938"W	5244.95	344.084	1.08	1.03	-0.32	
11092.00	89.600	340.450	6947.33	5333.07	5133.50	-1469.83	1711142.94	14366768.87	39°33'44.2916"N	80°44'56.5934"W	5339.78	344.022	1.09	-1.03	-0.34	
11281.00	90.620	340.860	6946.97	5522.06	5311.83	-1532.44	1711080.36	14366947.13	39°33'46.0558"N	80°44'57.3864"W	5528.46	343.907	0.58	0.54	0.22	
11375.00	91.140	341.300	6945.53	5616.05	5400.74	-1562.91	1711049.90	14367036.00	39°33'46.9354"N	80°44'57.7723"W	5622.34	343.860	0.72	0.55	0.47	
11470.00	90.550	341.450	6944.13	5711.04	5490.75	-1593.25	1711019.57	14367125.98	39°33'47.8258"N	80°44'58.1565"W	5717.24	343.819	0.64	-0.62	0.16	
11564.00	90.150	341.170	6943.55	5805.03	5579.79	-1623.37	1710989.46	14367214.99	39°33'48.7067"N	80°44'58.5379"W	5811.15	343.778	0.52	-0.43	-0.30	
11659.00	90.520	341.230	6943.00	5900.03	5669.72	-1653.98	1710958.86	14367304.88	39°33'49.5963"N	80°44'58.9256"W	5906.05	343.737	0.39	0.39	0.06	
11753.00	89.170	341.400	6943.25	5994.03	5758.77	-1684.10	1710928.76	14367393.89	39°33'50.4772"N	80°44'59.3069"W	5999.97	343.699	1.45	-1.44	0.18	
11848.00	89.200	341.660	6944.60	6089.02	5848.87	-1714.19	1710898.68	14367483.95	39°33'51.3685"N	80°44'59.6880"W	6094.89	343.665	0.28	0.03	0.27	
11942.00	89.170	341.190	6945.94	6183.01	5937.96	-1744.13	1710868.75	14367573.01	39°33'52.2498"N	80°45'0.0671"W	6188.81	343.631	0.50	-0.03	-0.50	
12036.00	88.770	341.350	6947.63	6276.99	6026.97	-1774.31	1710838.58	14367661.98	39°33'53.1303"N	80°45'0.4493"W	6282.72	343.596	0.46	-0.43	0.17	
12131.00	88.920	341.120	6949.54	6371.97	6116.90	-1804.86	1710808.04	14367751.88	39°33'54.0200"N	80°45'0.8363"W	6377.62	343.561	0.29	0.16	-0.24	
12225.00	89.080	340.960	6951.18	6465.96	6205.79	-1835.40	1710777.52	14367840.73	39°33'54.8993"N	80°45'1.2230"W	6471.51	343.524	0.24	0.17	-0.17	
12320.00	89.080	341.110	6952.71	6560.95	6295.62	-1866.27	1710746.66	14367930.52	39°33'55.7880"N	80°45'1.6140"W	6566.41	343.488	0.16	0.00	0.16	
12414.00	88.550	340.450	6954.65	6654.92	6384.36	-1897.21	1710715.73	14368019.23	39°33'56.6659"N	80°45'2.0059"W	6660.29	343.450	0.90	-0.56	-0.70	
12509.00	89.720	340.720	6956.09	6749.91	6473.94	-1928.78	1710684.17	14368108.78	39°33'57.5521"N	80°45'2.4059"W	6755.16	343.410	1.26	1.23	0.28	
12603.00	90.180	340.770	6956.17	6843.90	6562.69	-1959.78	1710653.18	14368197.49	39°33'58.4300"N	80°45'2.7986"W	6849.06	343.373	0.49	0.49	0.05	
12698.00	89.450	341.450	6956.48	6938.90	6652.57	-1990.54	1710622.44	14368287.33	39°33'59.3192"N	80°45'3.1881"W	6943.98	343.342	1.05	-0.77	0.72	
12792.00	89.450	340.260	6957.38	7032.89	6741.36	-2021.36	1710591.63	14368376.09	39°34'0.1976"N	80°45'3.5786"W	7037.89	343.309	1.27	0.00	-1.27	
12887.00	89.540	341.330	6958.22	7127.89	6831.07	-2052.61	1710560.39	14368465.77	39°34'1.0851"N	80°45'3.9744"W	7132.79	343.275	1.13	0.09	1.13	
12982.00	89.570	341.020	6958.95	7222.88	6920.99	-2083.27	1710529.75	14368555.65	39°34'1.9746"N	80°45'4.3627"W	7227.73	343.248	0.33	0.03	-0.33	
13076.00	90.180	341.170	6959.16	7316.88	7009.91	-2113.72	1710499.30	14368644.54	39°34'2.8543"N	80°45'4.7484"W	7321.66	343.220	0.67	0.65	0.16	
13171.00	90.120	341.450	6958.91	7411.88	7099.90	-2144.16	1710468.87	14368734.49	39°34'3.7445"N	80°45'5.1340"W	7416.61	343.196	0.30	-0.06	0.29	
13234.00	91.110	341.110	6958.23	7474.88	7159.57	-2164.38	1710448.66	14368824.13	39°34'4.3347"N	80°45'5.3900"W	7479.57	343.180	1.86	1.57	-0.54	
13329.00	90.550	341.770	6956.86	7569.87	7249.62	-2194.62	1710418.44	14368914.15	39°34'5.2255"N	80°45'5.7729"W	7574.52	343.158	0.91	-0.59	0.69	
13423.00	89.780	341.340	6956.59	7663.86	7338.79	-2224.36	1710388.71	14369004.28	39°34'6.1076"N	80°45'6.1495"W	7668.48	343.138	0.94	-0.82	-0.46	



# Actual Wellpath Report

Trader Unit 1H AWP Proj: 22859'

Page 7 of 12



REFERENCE WELLPATH IDENTIFICATION			
Operator	ANTERO RESOURCES CORPORATION	Well	Trader Unit 1H
Field	Wetzel	API	47-103-03459-0000
Facility	Journeyman Pad	Wellbore	Trader Unit 1H AWB
Slot	Slot A		

WELLPATH DATA (250 stations)																
MD (ft)	Inclination [°]	Azimuth [°]	TVD (ft)	Vert Sect (ft)	North (ft)	East (ft)	Grid East (US ft)	Grid North (US ft)	Latitude	Longitude	Closure Dist (ft)	Closure Dir [°]	DLS (°/100ft)	Build Rate (°/100ft)	Turn Rate (°/100ft)	Comments
13518.00	90.000	341.030	6956.77	7758.86	7428.71	-2255.00	1710358.09	14369063.17	39°34'6.9972"N	80°45'6.5376"W	7763.42	343.114	0.40	0.23	-0.33	
13613.00	89.940	341.100	6956.82	7853.86	7518.57	-2285.82	1710327.27	14369152.99	39°34'7.8861"N	80°45'6.9281"W	7858.36	343.089	0.10	-0.06	0.07	
13707.00	90.800	340.750	6956.21	7947.86	7607.40	-2316.54	1710296.57	14369241.79	39°34'8.7650"N	80°45'7.3172"W	7952.29	343.064	0.99	0.91	-0.37	
13801.00	90.430	341.160	6955.20	8041.85	7696.25	-2347.21	1710265.91	14369330.61	39°34'9.6439"N	80°45'7.7057"W	8046.22	343.039	0.59	-0.39	0.44	
13896.00	90.580	341.130	6954.37	8136.85	7786.15	-2377.91	1710235.22	14369420.47	39°34'10.5332"N	80°45'8.0946"W	8141.17	343.017	0.16	0.16	-0.03	
13991.00	90.280	339.830	6953.65	8231.84	7875.69	-2409.66	1710203.49	14369509.97	39°34'11.4190"N	80°45'8.4968"W	8236.07	342.988	1.40	-0.32	-1.37	
14085.00	90.310	340.650	6953.17	8325.82	7964.15	-2441.43	1710171.72	14369598.40	39°34'12.2942"N	80°45'8.8995"W	8329.96	342.957	0.87	0.03	0.87	
14180.00	90.150	340.930	6952.79	8420.82	8053.86	-2472.69	1710140.48	14369688.07	39°34'13.1816"N	80°45'9.2955"W	8424.90	342.932	0.34	-0.17	0.29	
14274.00	90.520	339.810	6952.24	8514.81	8142.39	-2504.27	1710108.91	14369776.57	39°34'14.0575"N	80°45'9.6956"W	8518.80	342.904	1.25	0.39	-1.19	
14369.00	91.020	340.980	6950.96	8609.79	8231.88	-2536.14	1710077.05	14369866.02	39°34'14.9427"N	80°45'10.0994"W	8613.70	342.877	1.34	0.53	1.23	
14463.00	90.400	341.450	6949.80	8703.78	8320.86	-2566.41	1710046.80	14369954.97	39°34'15.8230"N	80°45'10.4828"W	8707.65	342.859	0.83	-0.66	0.50	
14558.00	90.220	340.710	6949.28	8798.78	8410.73	-2597.21	1710016.01	14370044.80	39°34'16.7120"N	80°45'10.8730"W	8802.60	342.839	0.80	-0.19	-0.78	
14652.00	90.060	341.060	6949.05	8892.78	8499.54	-2627.99	1709985.24	14370133.58	39°34'17.5906"N	80°45'11.2630"W	8896.55	342.819	0.41	-0.17	0.37	
14747.00	90.550	340.670	6948.55	8987.77	8589.29	-2659.13	1709954.11	14370223.29	39°34'18.4785"N	80°45'11.6575"W	8991.49	342.798	0.66	0.52	-0.41	
14842.00	90.740	341.720	6947.48	9082.77	8679.22	-2689.75	1709923.50	14370313.18	39°34'19.3680"N	80°45'12.0453"W	9086.45	342.781	1.12	0.20	1.11	
14936.00	90.460	340.950	6946.49	9176.76	8768.27	-2719.84	1709893.43	14370402.19	39°34'20.2489"N	80°45'12.4264"W	9180.41	342.767	0.87	-0.30	-0.82	
15031.00	90.710	340.900	6945.52	9271.75	8858.05	-2750.88	1709862.40	14370491.94	39°34'21.1371"N	80°45'12.8197"W	9275.36	342.748	0.27	0.26	-0.05	
15125.00	91.020	341.700	6944.10	9365.74	8947.07	-2781.01	1709832.28	14370580.93	39°34'22.0178"N	80°45'13.2014"W	9369.32	342.733	0.91	0.33	0.85	
15220.00	90.710	340.710	6942.67	9460.73	9036.99	-2811.62	1709801.69	14370670.82	39°34'22.9073"N	80°45'13.5890"W	9464.27	342.718	1.09	-0.33	-1.04	
15315.00	90.220	340.180	6941.90	9555.72	9126.51	-2843.41	1709769.90	14370760.30	39°34'23.7929"N	80°45'13.9919"W	9559.20	342.695	0.76	-0.52	-0.56	
15409.00	91.450	341.360	6940.53	9649.70	9215.25	-2874.37	1709738.96	14370849.00	39°34'24.6708"N	80°45'14.3841"W	9653.13	342.677	1.81	1.31	1.26	
15504.00	90.340	339.730	6939.05	9744.68	9304.81	-2906.01	1709707.33	14370938.53	39°34'25.5568"N	80°45'14.7850"W	9748.05	342.656	2.08	-1.17	-1.72	
15599.00	91.290	340.920	6937.69	9839.66	9394.26	-2937.99	1709675.37	14371027.94	39°34'26.4416"N	80°45'15.1903"W	9842.96	342.633	1.60	1.00	1.25	
15693.00	90.830	340.830	6935.96	9933.64	9483.05	-2968.78	1709644.59	14371116.70	39°34'27.3201"N	80°45'15.5804"W	9936.90	342.617	0.50	-0.49	-0.10	
15819.00	90.740	341.100	6934.23	10059.63	9602.15	-3009.87	1709603.51	14371235.75	39°34'28.4982"N	80°45'16.1010"W	10062.83	342.596	0.23	-0.07	0.21	
15914.00	90.920	341.620	6932.85	10154.62	9692.16	-3040.23	1709573.16	14371325.72	39°34'29.3886"N	80°45'16.4856"W	10157.80	342.584	0.58	0.19	0.55	
16008.00	90.430	340.880	6931.75	10248.61	9781.16	-3070.44	1709542.96	14371414.69	39°34'30.2691"N	80°45'16.8683"W	10251.77	342.572	0.94	-0.52	-0.79	
16103.00	90.430	340.760	6931.03	10343.61	9870.89	-3101.65	1709511.77	14371504.38	39°34'31.1567"N	80°45'17.2638"W	10346.72	342.556	0.13	0.00	-0.13	
16197.00	90.830	340.520	6930.00	10437.60	9959.57	-3132.81	1709480.62	14371593.02	39°34'32.0340"N	80°45'17.6586"W	10440.66	342.539	0.50	0.43	-0.26	
16292.00	91.080	341.080	6928.42	10532.58	10049.27	-3164.05	1709449.39	14371682.69	39°34'32.9214"N	80°45'18.0544"W	10535.61	342.523	0.65	0.26	0.59	





# Actual Wellpath Report

Trader Unit 1H AWP Proj: 22859'  
Page 8 of 12



REFERENCE WELLPATH IDENTIFICATION			
Operator	ANTERO RESOURCES CORPORATION	Well	Trader Unit 1H
Field	Wetzel	API	47-103-03459-0000
Facility	Journeyman Pad	Wellbore	Trader Unit 1H AWP
Slot	Slot A		

WELLPATH DATA (250 stations)																
MD (ft)	Inclination (°)	Azimuth (°)	TVD (ft)	Vert Sect (ft)	North (ft)	East (ft)	Grid East (US ft)	Grid North (US ft)	Latitude	Longitude	Closure Dist (ft)	Closure Dir (°)	DLS (°/100ft)	Build Rate (°/100ft)	Turn Rate (°/100ft)	Comments
16387.00	90.340	339.540	6927.24	10627.56	10138.70	-3196.05	1709417.40	14371772.09	39°34'33.8061"N	80°45'18.4600"W	10630.53	342.503	1.80	-0.78	-1.62	
16481.00	91.260	341.160	6925.93	10721.54	10227.22	-3227.66	1709385.81	14371860.57	39°34'34.6818"N	80°45'18.8606"W	10724.45	342.485	1.98	0.98	1.72	
16576.00	90.490	340.740	6924.48	10816.53	10317.00	-3258.66	1709354.82	14371950.32	39°34'35.5700"N	80°45'19.2534"W	10819.40	342.471	0.92	-0.81	-0.44	
16671.00	90.430	339.680	6923.71	10911.51	10406.39	-3290.83	1709322.67	14372039.67	39°34'36.4542"N	80°45'19.6610"W	10914.32	342.451	1.12	-0.06	-1.12	
16765.00	90.710	338.670	6922.78	11005.45	10494.24	-3324.24	1709289.26	14372127.49	39°34'37.3234"N	80°45'20.0847"W	11008.17	342.423	1.11	0.30	-1.07	
16859.00	90.980	340.370	6921.39	11099.40	10582.29	-3357.13	1709256.39	14372215.50	39°34'38.1945"N	80°45'20.5016"W	11102.03	342.399	1.83	0.29	1.81	
16954.00	90.520	338.930	6920.15	11194.35	10671.35	-3390.16	1709223.37	14372304.52	39°34'39.0756"N	80°45'20.9204"W	11196.91	342.376	1.59	-0.48	-1.52	
17048.00	91.020	340.620	6918.88	11288.31	10759.54	-3422.65	1709190.89	14372392.68	39°34'39.9481"N	80°45'21.3323"W	11290.80	342.354	1.87	0.53	1.80	
17142.00	90.920	341.200	6917.29	11382.30	10848.36	-3453.39	1709160.17	14372481.46	39°34'40.8267"N	80°45'21.7218"W	11384.76	342.342	0.63	-0.11	0.62	
17237.00	90.550	341.190	6916.07	11477.29	10938.28	-3484.01	1709129.56	14372571.35	39°34'41.7162"N	80°45'22.1097"W	11479.73	342.333	0.39	-0.39	-0.01	
17331.00	90.620	340.440	6915.11	11571.28	11027.05	-3514.90	1709098.68	14372660.09	39°34'42.5944"N	80°45'22.5011"W	11573.70	342.320	0.80	0.07	-0.80	
17426.00	89.940	340.770	6914.65	11666.28	11116.66	-3546.45	1709067.15	14372749.66	39°34'43.4809"N	80°45'22.9009"W	11668.65	342.306	0.80	-0.72	0.35	
17521.00	90.890	340.680	6913.96	11761.27	11206.33	-3577.81	1709035.80	14372839.29	39°34'44.3679"N	80°45'23.2983"W	11763.61	342.293	1.00	1.00	-0.09	
17615.00	90.770	341.010	6912.60	11855.26	11295.12	-3608.65	1709004.97	14372928.05	39°34'45.2463"N	80°45'23.6891"W	11857.57	342.282	0.37	-0.13	0.35	
17710.00	90.400	340.870	6911.63	11950.25	11384.91	-3639.67	1708973.96	14373017.80	39°34'46.1345"N	80°45'24.0822"W	11952.54	342.271	0.42	-0.39	-0.15	
17805.00	90.180	340.540	6911.15	12045.25	11474.57	-3671.06	1708942.59	14373107.42	39°34'47.0215"N	80°45'24.4800"W	12047.51	342.259	0.42	-0.23	-0.35	
17899.00	90.310	341.380	6910.75	12139.25	11563.42	-3701.72	1708911.93	14373196.24	39°34'47.9005"N	80°45'24.8685"W	12141.48	342.249	0.90	0.14	0.89	
17994.00	90.740	341.150	6909.88	12234.24	11653.39	-3732.23	1708881.43	14373286.17	39°34'48.7904"N	80°45'25.2551"W	12236.46	342.241	0.51	0.45	-0.24	
18089.00	90.400	341.030	6908.93	12329.24	11743.25	-3763.02	1708850.66	14373376.00	39°34'49.6794"N	80°45'25.6452"W	12331.44	342.232	0.38	-0.36	-0.13	
18278.00	90.370	340.800	6907.66	12518.23	11921.86	-3824.82	1708788.89	14373554.54	39°34'51.4463"N	80°45'26.4282"W	12520.38	342.213	0.12	-0.02	-0.12	
18373.00	90.580	340.710	6906.87	12613.23	12011.55	-3856.13	1708757.59	14373644.19	39°34'52.3335"N	80°45'26.8251"W	12615.35	342.202	0.24	0.22	-0.09	
18468.00	90.340	340.720	6906.11	12708.22	12101.22	-3887.50	1708726.23	14373733.82	39°34'53.2205"N	80°45'27.2227"W	12710.32	342.190	0.25	-0.25	0.01	
18563.00	90.310	340.370	6905.57	12803.21	12190.79	-3919.14	1708694.60	14373823.36	39°34'54.1066"N	80°45'27.6237"W	12805.27	342.178	0.37	-0.03	-0.37	
18657.00	90.710	341.780	6904.74	12897.21	12279.70	-3949.63	1708664.13	14373912.24	39°34'54.9862"N	80°45'28.0100"W	12899.25	342.170	1.56	0.43	1.50	
18752.00	90.650	341.760	6903.61	12992.19	12369.93	-3979.35	1708634.42	14374002.43	39°34'55.8787"N	80°45'28.3864"W	12994.24	342.167	0.07	-0.06	-0.02	
18847.00	90.120	341.530	6902.97	13087.19	12460.09	-4009.26	1708604.52	14374092.56	39°34'56.7706"N	80°45'28.7654"W	13089.24	342.163	0.61	-0.56	-0.24	
18941.00	90.280	341.600	6902.64	13181.18	12549.27	-4038.99	1708574.80	14374181.70	39°34'57.6527"N	80°45'29.1420"W	13183.23	342.159	0.19	0.17	0.07	
19036.00	90.710	341.330	6901.82	13276.18	12639.34	-4069.18	1708544.62	14374271.73	39°34'58.5437"N	80°45'29.5245"W	13278.22	342.154	0.53	0.45	-0.28	
19131.00	90.620	341.820	6900.72	13371.17	12729.46	-4099.21	1708514.61	14374361.82	39°34'59.4352"N	80°45'29.9049"W	13373.21	342.150	0.52	-0.09	0.52	
19226.00	90.460	342.000	6899.82	13466.16	12819.76	-4128.70	1708485.12	14374452.08	39°35'0.3285"N	80°45'30.2786"W	13468.20	342.148	0.25	-0.17	0.19	



# Actual Wellpath Report

Trader Unit 1H AWP Proj: 22859'

Page 9 of 12



REFERENCE WELLPATH IDENTIFICATION			
Operator	ANTERO RESOURCES CORPORATION	Well	Trader Unit 1H
Field	Wetzel	API	47-103-03459-0000
Facility	Journeyman Pad	Wellbore	Trader Unit 1H AWB
Slot	Slot A		

WELLPATH DATA (250 stations)																
MD (ft)	Inclination [°]	Azimuth [°]	TVD (ft)	Vert Sect (ft)	North (ft)	East (ft)	Grid East (US ft)	Grid North (US ft)	Latitude	Longitude	Closure Dist (ft)	Closure Dir [°]	DLS (°/100ft)	Build Rate (°/100ft)	Turn Rate (°/100ft)	Comments
19320.00	90.520	342.000	6899.02	13560.14	12909.16	-4157.75	1708456.09	14374541.44	39°35'1.2127"N	80°45'30.6465"W	13562.20	342.147	0.06	0.06	0.00	
19415.00	90.150	341.120	6898.46	13655.14	12999.28	-4187.80	1708426.05	14374631.53	39°35'2.1042"N	80°45'31.0272"W	13657.19	342.143	1.00	-0.39	-0.93	
19510.00	90.580	341.660	6897.86	13750.14	13089.30	-4218.12	1708395.74	14374721.52	39°35'2.9948"N	80°45'31.4114"W	13752.18	342.138	0.72	0.45	0.56	
19605.00	90.770	342.000	6896.74	13845.12	13179.56	-4247.75	1708366.12	14374811.74	39°35'3.8876"N	80°45'31.7867"W	13847.17	342.136	0.42	0.20	0.37	
19700.00	90.800	342.250	6895.44	13940.10	13269.96	-4276.91	1708336.97	14374902.11	39°35'4.7818"N	80°45'32.1560"W	13942.16	342.136	0.27	0.03	0.26	
19794.00	90.580	341.830	6894.31	14034.08	13359.38	-4305.89	1708308.00	14374991.49	39°35'5.6663"N	80°45'32.5231"W	14036.16	342.135	0.50	-0.23	-0.45	
19889.00	90.430	341.920	6893.47	14129.07	13449.66	-4335.45	1708278.46	14375081.73	39°35'6.5593"N	80°45'32.8975"W	14131.15	342.133	0.18	-0.16	0.09	
19984.00	90.430	341.260	6892.76	14224.06	13539.79	-4365.45	1708248.47	14375171.83	39°35'7.4510"N	80°45'33.2776"W	14226.14	342.130	0.69	0.00	-0.69	
20078.00	90.550	341.100	6891.95	14318.06	13628.77	-4395.77	1708218.16	14375260.77	39°35'8.3311"N	80°45'33.6619"W	14320.13	342.124	0.21	0.13	-0.17	
20173.00	90.580	341.510	6891.02	14413.05	13718.75	-4426.22	1708187.72	14375350.72	39°35'9.2212"N	80°45'34.0477"W	14415.11	342.118	0.43	0.03	0.43	
20267.00	90.800	342.270	6889.88	14507.04	13808.08	-4455.44	1708158.52	14375440.02	39°35'10.1049"N	80°45'34.4178"W	14509.10	342.117	0.84	0.23	0.81	
20361.00	90.490	342.070	6888.83	14601.02	13897.56	-4484.22	1708129.75	14375529.46	39°35'10.9900"N	80°45'34.7824"W	14603.10	342.117	0.39	-0.33	-0.21	
20456.00	90.340	341.320	6888.14	14696.01	13987.75	-4514.05	1708099.93	14375619.61	39°35'11.8821"N	80°45'35.1604"W	14698.09	342.114	0.81	-0.16	-0.79	
20551.00	90.520	341.610	6887.42	14791.01	14077.82	-4544.25	1708069.74	14375709.65	39°35'12.7731"N	80°45'35.5430"W	14793.08	342.110	0.36	0.19	0.31	
20645.00	90.120	341.480	6886.90	14885.00	14166.99	-4574.01	1708039.99	14375798.78	39°35'13.6551"N	80°45'35.9200"W	14887.08	342.107	0.45	-0.43	-0.14	
20740.00	90.400	341.590	6886.47	14980.00	14257.10	-4604.10	1708009.92	14375888.85	39°35'14.5465"N	80°45'36.3013"W	14982.07	342.103	0.32	0.29	0.12	
20834.00	90.680	341.680	6885.58	15073.99	14346.30	-4633.71	1707980.31	14375978.02	39°35'15.4289"N	80°45'36.6765"W	15076.06	342.100	0.31	0.30	0.10	
20929.00	90.340	342.020	6884.74	15168.98	14436.57	-4663.30	1707950.73	14376068.26	39°35'16.3219"N	80°45'37.0514"W	15171.06	342.099	0.51	-0.36	0.36	
21024.00	90.490	341.540	6884.05	15263.97	14526.81	-4693.00	1707921.04	14376158.46	39°35'17.2144"N	80°45'37.4277"W	15266.06	342.097	0.53	0.16	-0.51	
21118.00	90.620	341.590	6883.14	15357.97	14615.98	-4722.73	1707891.33	14376247.59	39°35'18.0965"N	80°45'37.8043"W	15360.05	342.093	0.15	0.14	0.05	
21213.00	90.310	341.780	6882.37	15452.96	14706.16	-4752.58	1707861.49	14376337.74	39°35'18.9886"N	80°45'38.1825"W	15455.04	342.091	0.38	-0.33	0.20	
21308.00	90.460	341.710	6881.73	15547.95	14796.38	-4782.34	1707831.75	14376427.92	39°35'19.8810"N	80°45'38.5596"W	15550.04	342.089	0.17	0.16	-0.07	
21402.00	90.430	341.270	6881.00	15641.95	14885.52	-4812.18	1707801.92	14376517.02	39°35'20.7627"N	80°45'38.9377"W	15644.03	342.085	0.47	-0.03	-0.47	
21497.00	90.250	341.460	6880.43	15736.94	14975.53	-4842.54	1707771.57	14376607.00	39°35'21.6532"N	80°45'39.3224"W	15739.02	342.081	0.28	-0.19	0.20	
21592.00	90.280	341.580	6880.00	15831.94	15065.63	-4872.65	1707741.47	14376697.07	39°35'22.5445"N	80°45'39.7039"W	15834.01	342.077	0.13	0.03	0.13	
21687.00	90.310	341.440	6879.51	15926.94	15155.73	-4902.78	1707711.36	14376787.13	39°35'23.4357"N	80°45'40.0857"W	15929.01	342.074	0.15	0.03	-0.15	
21782.00	90.120	341.670	6879.15	16021.93	15245.85	-4932.83	1707681.31	14376877.21	39°35'24.3271"N	80°45'40.4666"W	16024.00	342.071	0.31	-0.20	0.24	
21876.00	90.370	341.580	6878.75	16115.93	15335.05	-4962.46	1707651.69	14376966.38	39°35'25.2096"N	80°45'40.8421"W	16118.00	342.068	0.28	0.27	-0.10	
21971.00	89.350	341.640	6878.98	16210.93	15425.20	-4992.43	1707621.73	14377056.49	39°35'26.1013"N	80°45'41.2218"W	16213.00	342.066	1.08	-1.07	0.06	
22066.00	89.630	341.750	6879.83	16305.92	15515.39	-5022.27	1707591.91	14377146.65	39°35'26.9934"N	80°45'41.5999"W	16307.99	342.063	0.32	0.29	0.12	



# Actual Wellpath Report

Trader Unit 1H AWP Proj: 22859'

Page 10 of 12



REFERENCE WELLPATH IDENTIFICATION			
Operator	ANTERO RESOURCES CORPORATION	Well	Trader Unit 1H
Field	Wetzel	API	47-103-03459-0000
Facility	Journeyman Pad	Wellbore	Trader Unit 1H AWB
Slot	Slot A		

WELLPATH DATA (250 stations) † = interpolated, ‡ = extrapolated station																
MD	Inclination	Azimuth	TVD	Vert Sect	North	East	Grid East	Grid North	Latitude	Longitude	Closure Dist	Closure Dir	DLS	Build Rate	Turn Rate	Comments
[ft]	[°]	[°]	[ft]	[ft]	[ft]	[ft]	[US ft]	[US ft]			[ft]	[°]	[°/100ft]	[°/100ft]	[°/100ft]	
22160.00	89.660	341.310	6880.41	16399.91	15604.55	-5052.05	1707562.14	14377235.77	39°35'27.8753"N	80°45'41.9772"W	16401.98	342.060	0.47	0.03	-0.47	
22255.00	89.690	341.550	6880.95	16494.91	15694.60	-5082.30	1707531.90	14377325.78	39°35'28.7661"N	80°45'42.3606"W	16496.98	342.057	0.25	0.03	0.25	
22350.00	89.630	341.600	6881.51	16589.91	15784.73	-5112.33	1707501.89	14377415.88	39°35'29.6577"N	80°45'42.7411"W	16591.97	342.054	0.08	-0.06	0.05	
22445.00	89.660	341.500	6882.10	16684.90	15874.84	-5142.39	1707471.83	14377505.96	39°35'30.5491"N	80°45'43.1221"W	16686.97	342.051	0.11	0.03	-0.11	
22539.00	89.570	341.480	6882.73	16778.90	15963.98	-5172.23	1707442.00	14377595.06	39°35'31.4308"N	80°45'43.5003"W	16780.96	342.048	0.10	-0.10	-0.02	
22634.00	89.690	341.830	6883.34	16873.89	16054.15	-5202.13	1707412.12	14377685.19	39°35'32.3228"N	80°45'43.8791"W	16875.95	342.046	0.39	0.13	0.37	
22728.00	89.820	341.650	6883.75	16967.89	16143.41	-5231.59	1707382.67	14377774.42	39°35'33.2058"N	80°45'44.2523"W	16969.95	342.044	0.24	0.14	-0.19	
22823.00	89.820	341.670	6884.04	17062.88	16233.59	-5261.48	1707352.79	14377864.56	39°35'34.0977"N	80°45'44.6311"W	17064.95	342.042	0.02	0.00	0.02	
22834.00	89.880	341.750	6884.07	17073.88	16244.03	-5264.93	1707349.34	14377875.00	39°35'34.2011"N	80°45'44.6749"W	17075.95	342.042	0.91	0.55	0.73	
22859.00‡	89.880	341.750	6884.13	17098.88	16267.77	-5272.76	1707341.52	14377898.73	39°35'34.4359"N	80°45'44.7741"W	17100.95	342.041	0.00	0.00	0.00	Projected MD at TD: 22859'

HOLE & CASING SECTIONS - Ref Wellbore: Trader Unit 1H AWB Ref Wellpath: Trader Unit 1H AWP Proj: 22859'									
String/Diameter	Start MD	End MD	Interval	Start TVD	End TVD	Start N/S	Start E/W	End N/S	End E/W
	[ft]	[ft]	[ft]	[ft]	[ft]	[ft]	[ft]	[ft]	[ft]
20in Conductor	30.00	130.00	100.00	30.00	130.00	0.00	0.00	-0.02	-0.65
17.5in Open Hole	130.00	372.00	242.00	130.00	371.99	-0.02	-0.65	-0.01	-2.94
13.375in Casing Surface	30.00	350.00	320.00	30.00	349.99	0.00	0.00	-0.04	-2.81
12.25in Open Hole	372.00	2593.00	2221.00	371.99	2592.98	-0.01	-2.94	0.30	-6.18
9.625in Casing Intermediate	30.00	2563.00	2533.00	30.00	2562.98	0.00	0.00	0.11	-6.05
8.75in Open Hole	2593.00	6893.00	4300.00	2592.98	6687.83	0.30	-6.18	1217.60	-158.81
8.5in Open Hole	6893.00	22859.00	15966.00	6687.83	6884.13	1217.60	-158.81	16267.77	-5272.76
5.5in Casing Production	30.00	22839.00	22809.00	30.00	6884.08	0.00	0.00	16248.78	-5266.50



# Actual Wellpath Report

Trader Unit 1H AWP Proj: 22859'

Page 11 of 12



REFERENCE WELLPATH IDENTIFICATION			
Operator	ANTERO RESOURCES CORPORATION	Well	Trader Unit 1H
Field	Wetzel	API	47-103-03459-0000
Facility	Journeyman Pad	Wellbore	Trader Unit 1H AWB
Slot	Slot A		

TARGETS								
Name	TVD [ft]	North [ft]	East [ft]	Grid East [US ft]	Grid North [US ft]	Latitude	Longitude	Shape
Trader Unit 1H POE Rev-1	6879.00	1523.06	-255.30	1712356.99	14363159.86	39°33'8.5751"N	80°44'41.2169"W	point
Trader Unit 1H BHL Rev-1	6905.00	16284.50	-5295.83	1707318.46	14377915.45	39°35'34.6018"N	80°45'45.0682"W	point
Trader Unit 1H LP Rev-1	6905.00	1704.03	-317.09	1712295.22	14363340.75	39°33'10.3653"N	80°44'41.9992"W	point
Trader Unit 1H 50' L/R Hard Line	7250.00	8903.78	-2775.56	1709837.73	14370537.65	39°34'21.5898"N	80°45'13.1333"W	rectangle
2D Rectangle 15598.3 x 100.								

WELLPATH COMPOSITION - Ref Wellbore: Trader Unit 1H AWB Ref Wellpath: Trader Unit 1H AWP Proj: 22859'								
Start MD [ft]	End MD [ft]	Positional Uncertainty Model	Log Name/Comment	Wellbore	Survey Date			
30.00	300.00	Gyrodata 2015 - GC+WIR+DPIPE	01 Gyrodata MS Gyro <17-1/2"> (100'-300')	Trader Unit 1H AWB	25/Jan/2022			
300.00	561.00	Gyrodata 2015 - GC+WIR+DPIPE	02 Gyrodata MS Gyro <12-1/4"> (300')(400'-561')	Trader Unit 1H AWB	26/Jan/2022			
561.00	2517.00	BH NaviTrak (2019) (Axial Corr+HRGM)	03 APS EM <12-1/4"> (561')(598'-2517')	Trader Unit 1H AWB	25/Jan/2022			
2517.00	6833.00	BH NaviTrak (2019) (Axial Corr+HRGM)	04 APS EM <8-3/4"> (2517')(2571'-6833')	Trader Unit 1H AWB	25/Jan/2022			
6833.00	22859.00	BH AutoTrak Curve/eXpress (2019) (HRGM, Short spacing)	05 BH AT Curve <8-1/2"> (6833')(6929'-22834')	Trader Unit 1H AWB	25/Jan/2022			



## Actual Wellpath Report

Trader Unit 1H AWP Proj: 22859'

Page 12 of 12



### REFERENCE WELLPATH IDENTIFICATION

Operator	ANTERO RESOURCES CORPORATION	Well	Trader Unit 1H
Field	Wetzel	API	47-103-03459-0000
Facility	Journeyman Pad	Wellbore	Trader Unit 1H AWB
Slot	Slot A		

### COMMENTS

#### Wellpath general comments

API: 47-103-03459-0000  
 BH Job #: 111180669  
 Rig: H&P 519  
 Duration: 1/25/2022-2/2/2022  
 Gyrodata MS Gyro <17-1/2"> (100'-300')  
 Gyrodata MS Gyro <12-1/4"> (300')(400'-561')  
 APS EM <12-1/4"> (561')(598'-2517')  
 APS EM <8-3/4"> (2517')(2571'-6833')  
 BH AT Curve <8-1/2"> (6833')(6929'-22834')  
 Sycamore: 6733' MD  
 Middlesex: 6883' MD  
 Burkett: 7021' MD  
 Tully: 7070' MD  
 Marcellus POE: 7269' MD  
 Projected MD at TD: 22859'