

WW-7  
8-30-06



West Virginia Department of Environmental Protection  
Office of Oil and Gas  
**WELL LOCATION FORM: GPS**

API: 47-103-30156 WELL NO.: 7197

FARM NAME: SHUMAN HEIRS #4

RESPONSIBLE PARTY NAME: WEST VIRGINIA LAND RESOURCES INC.

COUNTY: WETZEL DISTRICT: GRANT

QUADRANGLE: FOLSOM W.VA

SURFACE OWNER: BERNARD R. ELLIOTT SR.

ROYALTY OWNER: \_\_\_\_\_

UTM GPS NORTHING: 4,371,767 m (1230')

UTM GPS EASTING: 541,740 m GPS ELEVATION: 375 m

The Responsible Party named above has chosen to submit GPS coordinates in lieu of preparing a new well location plat for a plugging permit or assigned API number on the above well. The Office of Oil and Gas will not accept GPS coordinates that do not meet the following requirements:

1. Datum: NAD 1983, Zone: 17 North, Coordinate Units: meters, Altitude: height above mean sea level (MSL) – meters.
2. Accuracy to Datum – 3.05 meters
3. Data Collection Method:

Survey grade GPS  : Post Processed Differential \_\_\_\_\_  
Real-Time Differential

Mapping Grade GPS \_\_\_\_\_ : Post Processed Differential \_\_\_\_\_  
Real-Time Differential \_\_\_\_\_

RECEIVED  
Office of Oil and Gas

JUL 26 2021

WV Department of  
Environmental Protection

4. Letter size copy of the topography map showing the well location.

I the undersigned, hereby certify this data is correct to the best of my knowledge and belief and shows all the information required by law and the regulations issued and prescribed by the Office of Oil and Gas.

Signature

Professional Surveyor

Title

JULY 15, 2021

Date

Well#7197

Folsom WV 7.5' Quad

Scale: 1" = 500'



1300

1100

1584

Oil Well

Well#7197

Oil Well

PIPELINE

1300

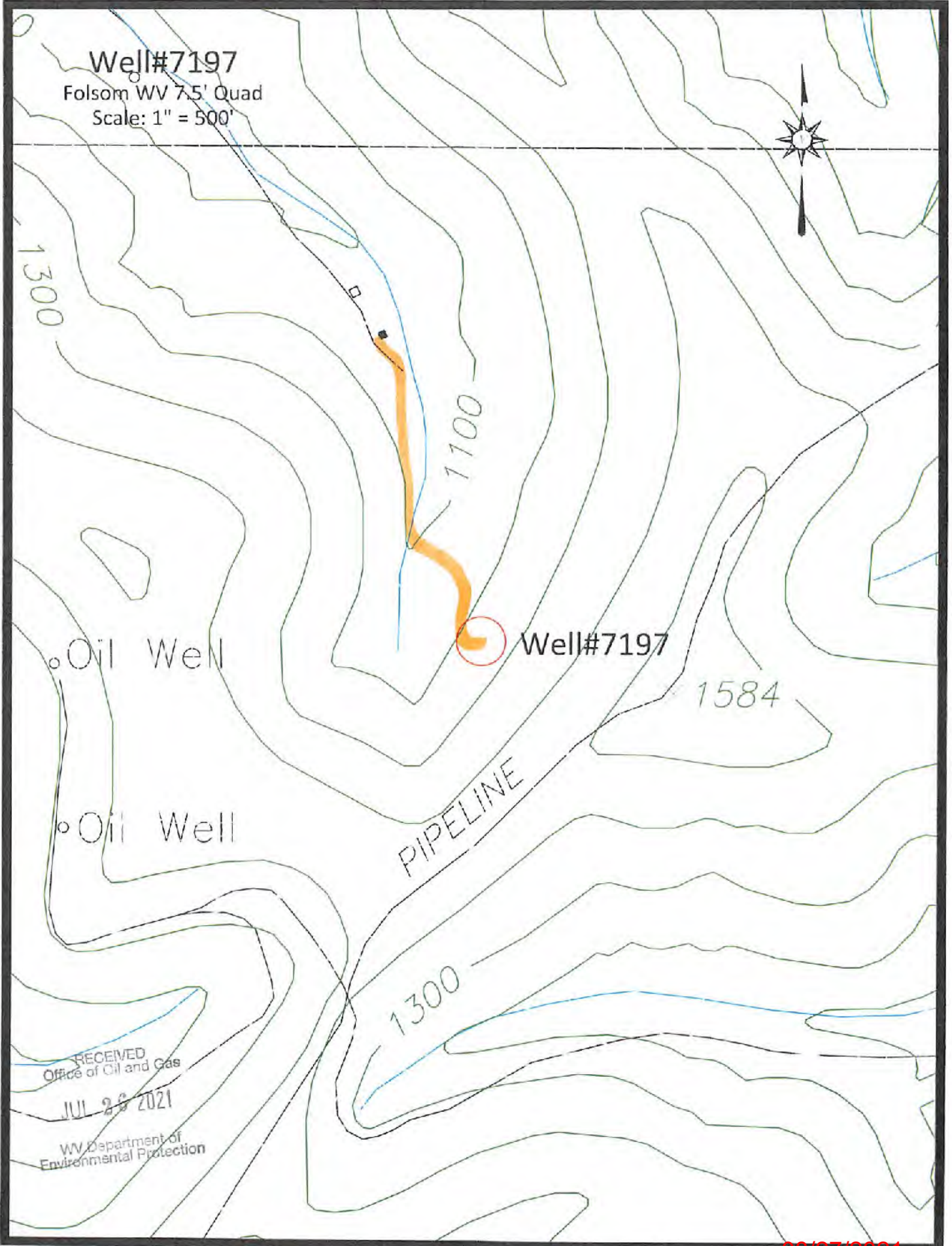
RECEIVED  
Office of Oil and Gas

JUL 28 2021

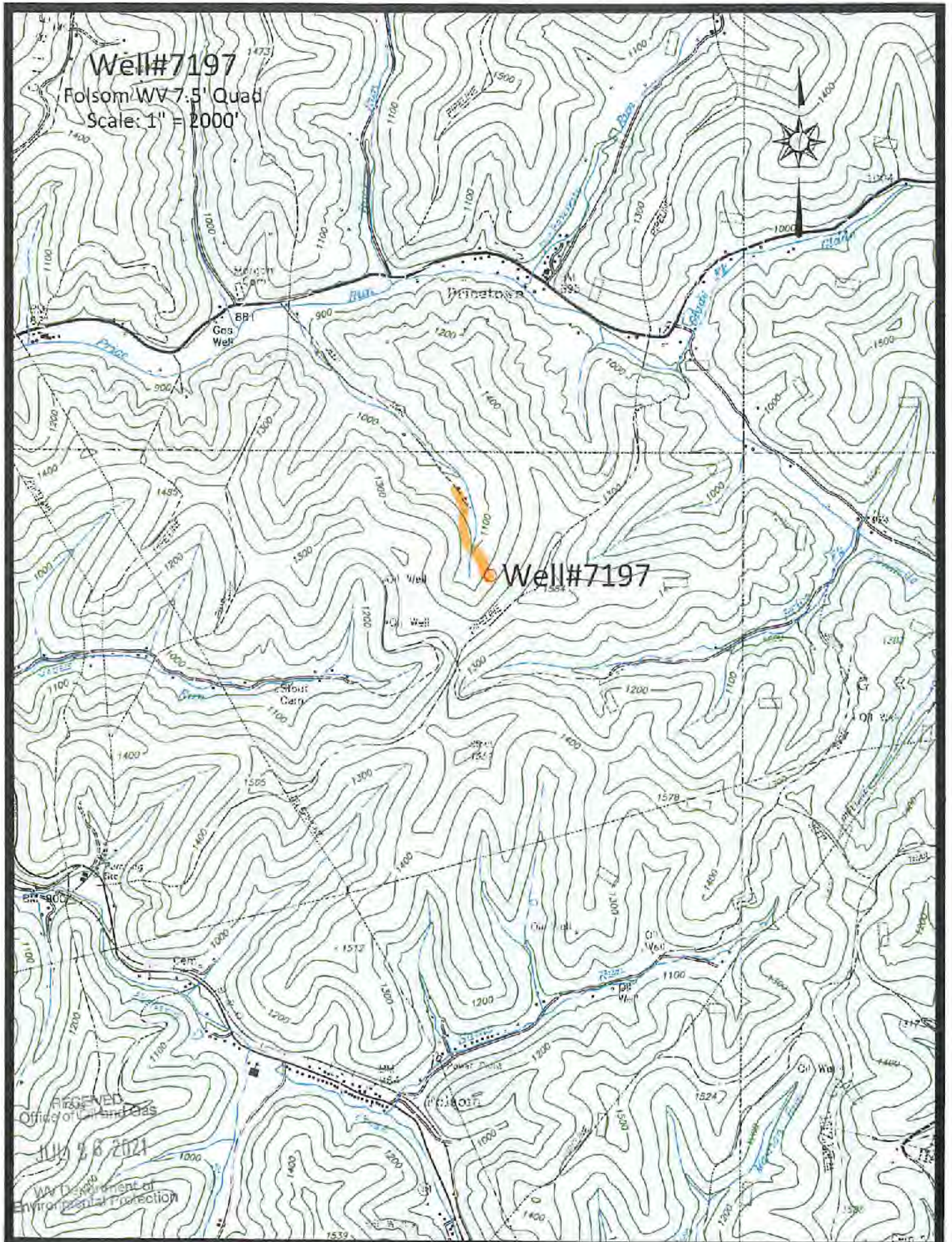
WV Department of  
Environmental Protection

08/27/2021

Access Road







Well#7197  
 Folsom WV 7.5' Quad  
 Scale: 1" = 2000'

Well#7197

RECEIVED  
 Office of Oil and Gas  
 July 28 2021  
 WV Department of  
 Environmental Protection

Access Road

08/27/2021



47-103-03451 P

FOLSOM QUADRANGLE  
WEST VIRGINIA  
7.5 MINUTE SERIES (TOPOGRAPHIC)  
NE/4 CENTER POINT 15' QUADRANGLE

185 III SW  
(GLOVER GAP)

39 32'30" 40 710 000 FEET 42 80° 30' 39° 30'



372  
371  
360 000  
FEET  
370  
369  
368  
27'30"  
367

RECEIVED  
Office of Oil and Gas  
JUL 26 2021  
WV Department of  
Environmental Protection

WETZEL CO  
HARRISON CO

08/27/2021

'Folsom; WV' Scale: 1" = 0.379Mi 610Mt 2,000Ft, 1 Mi = 2.640", 1 cm = 240Mt