

WW-7  
8-30-06



West Virginia Department of Environmental Protection  
Office of Oil and Gas  
**WELL LOCATION FORM: GPS**

API: 47-103-30803 WELL NO.: 6340

FARM NAME: O.P.MCINTYRE

RESPONSIBLE PARTY NAME: WEST VIRGINIA LAND RESOURCES INC.

COUNTY: WETZEL DISTRICT: GRANT

QUADRANGLE: WALLACE W.VA

SURFACE OWNER: COASTAL FOREST RESOURCES CO.

ROYALTY OWNER: \_\_\_\_\_

UTM GPS NORTHING: 4,371,375 m

UTM GPS EASTING: 543,371 m GPS ELEVATION: 305 m

1000'

The Responsible Party named above has chosen to submit GPS coordinates in lieu of preparing a new well location plat for a plugging permit or assigned API number on the above well. The Office of Oil and Gas will not accept GPS coordinates that do not meet the following requirements:

- Datum: NAD 1983, Zone: 17 North, Coordinate Units: meters, Altitude: height above mean sea level (MSL) – meters.
- Accuracy to Datum – 3.05 meters
- Data Collection Method:

Survey grade GPS \_\_\_\_\_: Post Processed Differential \_\_\_\_\_

Real-Time Differential \_\_\_\_\_

Mapping Grade GPS X: Post Processed Differential X

Real-Time Differential \_\_\_\_\_

- Letter size copy of the topography map showing the well location.

I the undersigned, hereby certify this data is correct to the best of my knowledge and belief and shows all the information required by law and the regulations issued and prescribed by the Office of Oil and Gas.

[Signature]  
Signature

Professional Surveyor  
Title

AUGUST 6, 2021  
Date

RECEIVED  
Office of Oil and Gas

AUG 16 2021

WV Department of  
Environmental Protection

08/27/2021



47-103-03448P

Well# 6340

WALLACE WV 7.5' Quad  
Scale: 1" = 500'

974



Oil

Tennmile

Price

Fk

1000

JEEP

1383

Well# 6340

G R

Oil Well

1100

TRAIL

1300

PIPELINE

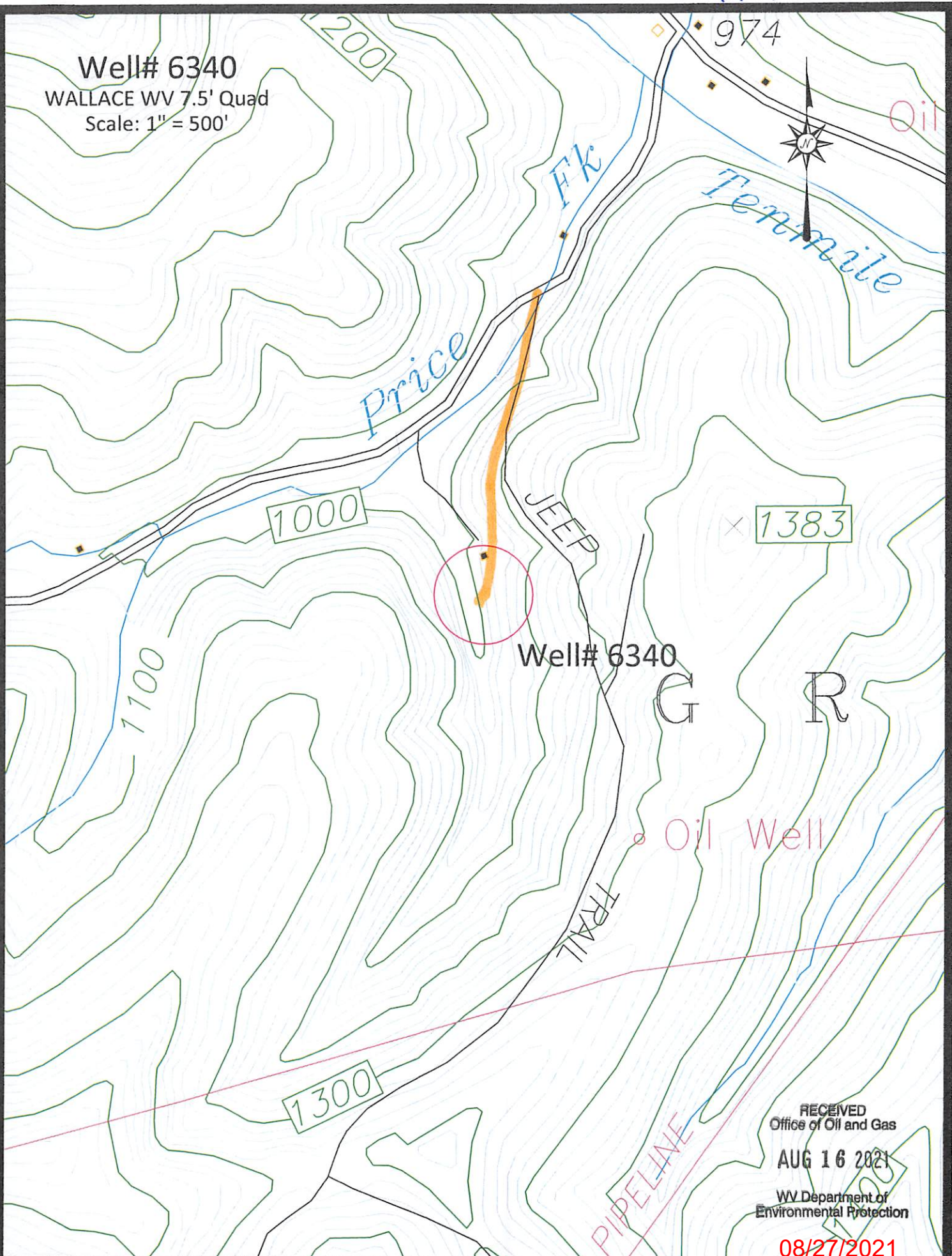
RECEIVED  
Office of Oil and Gas

AUG 16 2021

WV Department of  
Environmental Protection

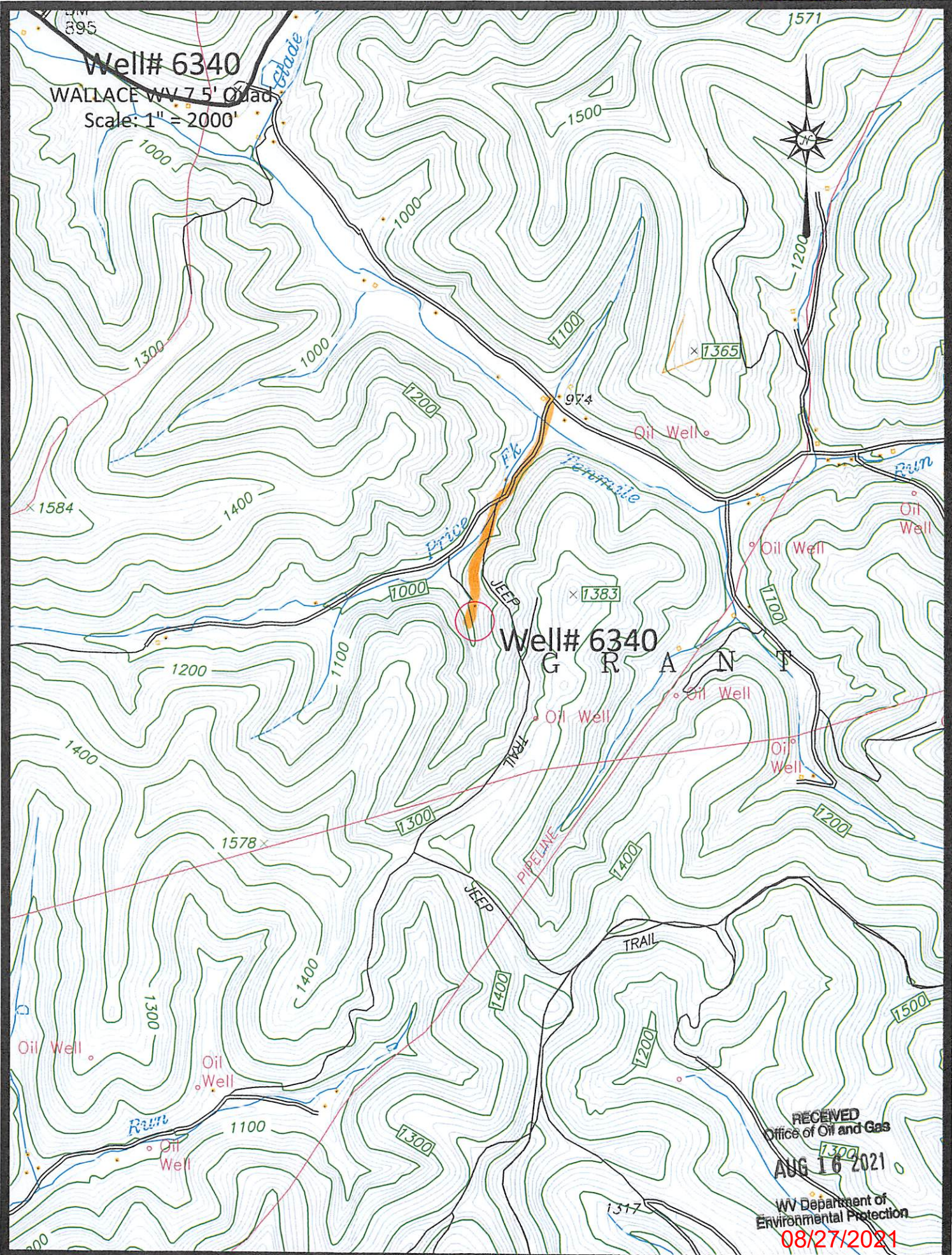
08/27/2021

Orange Road





47-103-03448 P



RECEIVED  
 Office of Oil and Gas  
 AUG 16 2021  
 WV Department of  
 Environmental Protection  
 08/27/2021

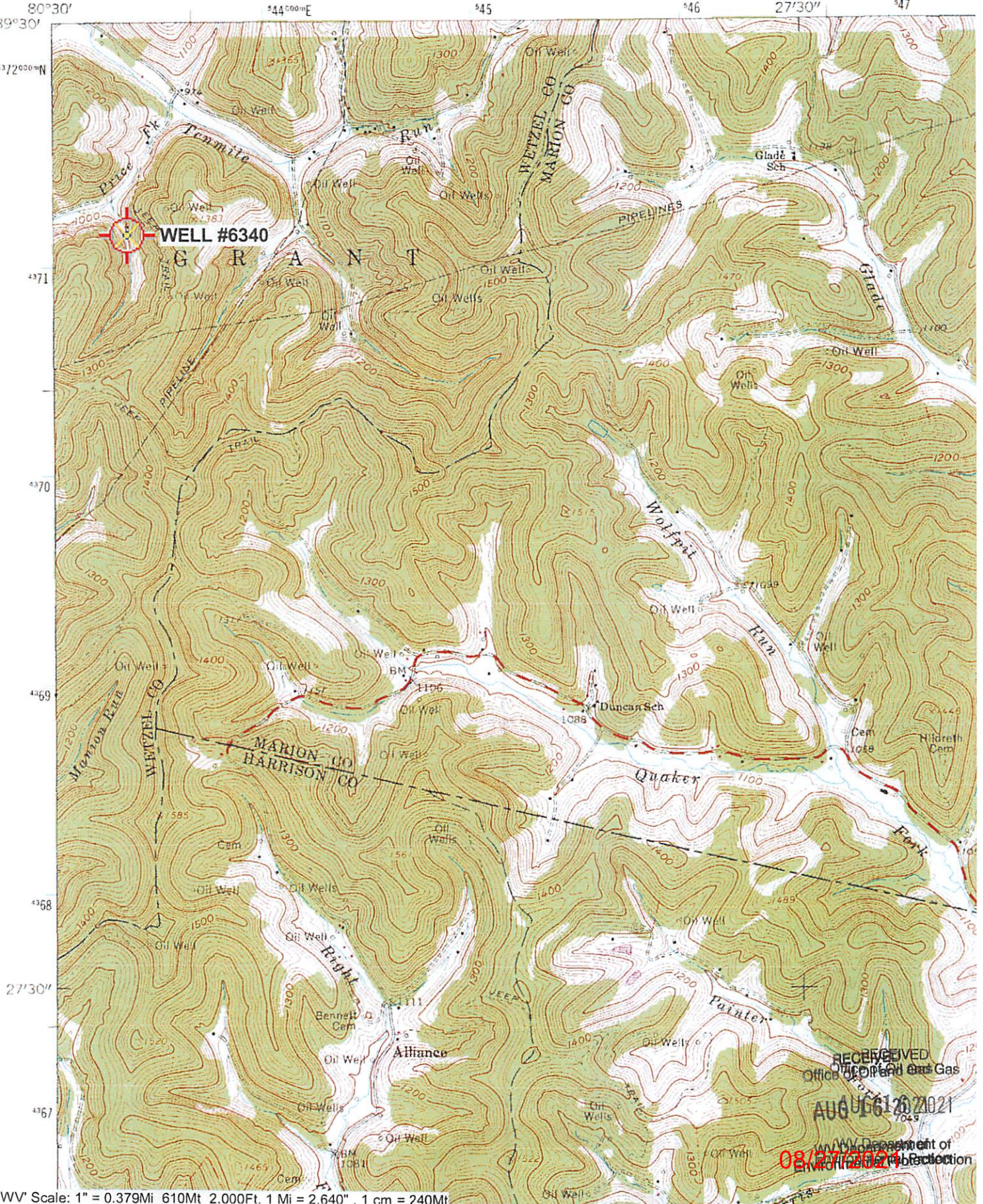
Price Road



47-103-03448P

UNITED STATES  
DEPARTMENT OF THE INTERIOR  
GEOLOGICAL SURVEY

4863 II SF  
(BIG RUN)



"Wallace: WV" Scale: 1" = 0.379Mi 610M 2,000Ft. 1 Mi = 2,640" . 1 cm = 240M

RECEIVED  
Office of Oil and Gas  
AUG 16 2021  
U.S. Department of  
Interior