



ANTERO RESOURCES CORPORATION



Location: Wetzel County, WV
 Field: Wetzel
 Facility: Dogwood Pad

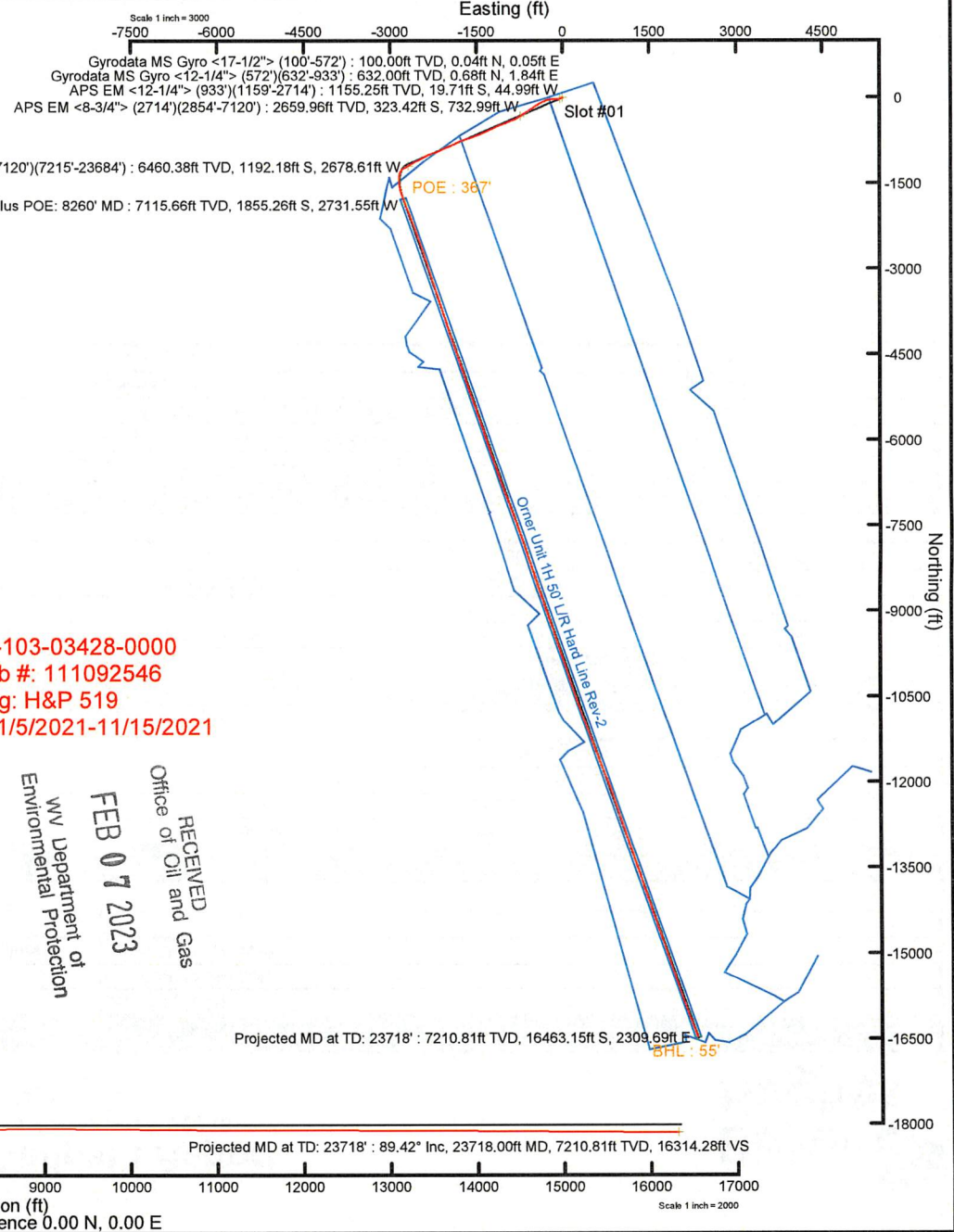
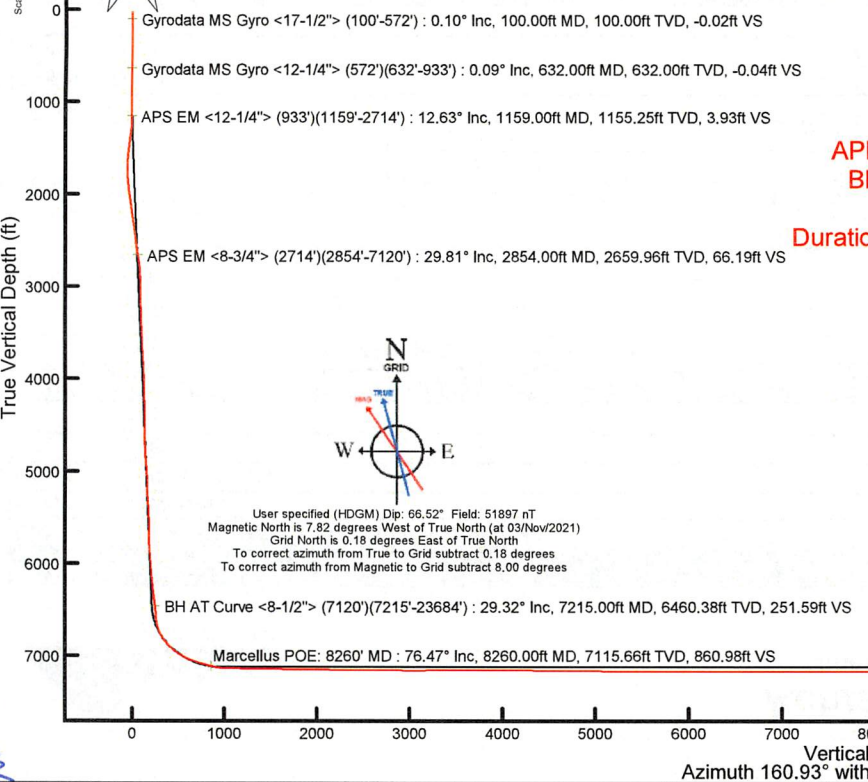
Slot: Slot #01
 Well: Orner Unit 1H
 Wellbore: Orner Unit 1H PWB

Plot reference wellpath is Orner Unit 1H PWP Rev-B.0	Grid System: NAD27 / UTM Zone 17 North, US feet
True vertical depths are referenced to H&P 519 (RKB)	North Reference: Grid north
Reference wellpath measured depths are referenced to H&P 519 (RKB)	Scale: True distance
H&P 519 (RKB) to Mean Sea Level: 1338 feet	Coordinates are in feet referenced to Slot
Mean Sea Level to Ground level (At Slot: Slot #01): -1308 feet	Depths are in feet
Offset wellpath MDs are referenced to each path's default MD datum	Created by: edkayser on 2021-11-29; Database: WA_MPL_EASTERN_US_Debl

Location Information				
Facility Name	Grid East (US ft)	Grid North (US ft)	Latitude	Longitude
Dogwood Pad	1718075.750	14353709.890	39°31'34.9750"N	80°43'28.5500"W
Slot	Local N (ft)	Local E (ft)	Grid East (US ft)	Grid North (US ft)
Slot #01	30.05	0.77	1718076.520	14353739.930
Comment	Orner Unit 1H			
H&P 519 (RKB) to Ground level (At Slot: Slot #01)	30ft			
Mean Sea Level to Ground level (At Slot: Slot #01)	-1308ft			
H&P 519 (RKB) to Mean Sea Level	1338ft			

Well Profile Data							
Design Comment	MD (ft)	Inc (°)	Az (°)	TVD (ft)	Local N (ft)	Local E (ft)	VS (ft)
Tie On	30.00	0.000	246.669	30.00	0.00	0.00	0.00
KOP 1	700.00	0.000	246.669	700.00	0.00	0.00	0.00
End of Build	1669.35	29.081	246.669	1628.27	-95.35	-221.08	17.89
Curve KOP	7217.76	29.081	246.669	6477.23	-1163.37	-2697.31	218.25
POE	8148.35	74.514	160.928	7098.00	-1763.66	-2768.81	762.24
Landing Pt.	8341.92	90.000	160.928	7124.00	-1944.39	-2706.32	953.46
BHL	23726.92	90.000	160.928	7124.00	-16484.88	2320.82	16338.46

Well Data			
Slot	Well	Wellbore	Wellpath
Slot #01	Orner Unit 1H	Orner Unit 1H AWB	Orner Unit 1H AWP Proj: 23718'
Slot #01	Orner Unit 1H	Orner Unit 1H PWB	Orner Unit 1H PWP Rev-B.0



API: 47-103-03428-0000
 BH Job #: 111092546
 Rig: H&P 519
 Duration: 11/5/2021-11/15/2021

RECEIVED
 Office of Oil and Gas
 FEB 07 2023
 WV Department of
 Environmental Protection

Projected MD at TD: 23718' : 89.42° Inc, 23718.00ft MD, 7210.81ft TVD, 16314.28ft VS

Vertical Section (ft)
 Azimuth 160.93° with reference 0.00 N, 0.00 E



Actual Wellpath Report

Orner Unit 1H AWP Proj: 23718'
Page 1 of 13



REFERENCE WELLPATH IDENTIFICATION

Operator	ANTERO RESOURCES CORPORATION	Well	Orner Unit 1H
Field	Wetzel	API	47-103-03428-0000
Facility	Dogwood Pad	Wellbore	Orner Unit 1H AWB
Slot	Slot #01		

REPORT SETUP INFORMATION

Projection System	NAD27 / UTM Zone 17 North, US feet	Software System	WellArchitect® 6.0
North Reference	Grid	User	Edsaryar
Scale	0.999607	Report Generated	29/Nov/2021 at 22:52
Convergence at slot	0.18° East	Database	WA_MPL_EASTERNUS_Defn

WELLPATH LOCATION

	Local coordinates		Grid coordinates		Geographic coordinates	
	North[ft]	East[ft]	Easting[US ft]	Northing[US ft]	Latitude	Longitude
Slot Location	30.05	0.77	1718076.52	14353739.93	39°31'35.2720"N	80°43'28.5390"W
Facility Reference Pt			1718075.75	14353709.89	39°31'34.9750"N	80°43'28.5500"W
Field Reference Pt			0.00	0.00	0°00'0.0000"	85°29'19.3013"W

WELLPATH DATUM

Calculation method	Minimum curvature	H&P 519 (RKB) to Facility Vertical Datum	1338.00ft
Horizontal Reference Pt	Slot	H&P 519 (RKB) to Mean Sea Level	1338.00ft
Vertical Reference Pt	H&P 519 (RKB)	H&P 519 (RKB) to Ground Level at Slot (Slot #01)	30.00ft
MD Reference Pt	H&P 519 (RKB)	Section Origin	N 0.00, E 0.00 ft
Field Vertical Reference	Mean Sea Level	Section Azimuth	160.93°



Actual Wellpath Report

Orner Unit 1H AWP Proj: 23718'
Page 2 of 13



REFERENCE WELLPATH IDENTIFICATION			
Operator	ANTERO RESOURCES CORPORATION	Well	Orner Unit 1H
Field	Wetzel	API	47-103-03428-0000
Facility	Dogwood Pad	Wellbore	Orner Unit 1H AWP
Slot	Slot #01		

WELLPATH DATA (261 stations) † = interpolated, ‡ = extrapolated station																
MD	Inclination	Azimuth	TVD	Vert Sect	North	East	Grid East	Grid North	Latitude	Longitude	Closure Dist	Closure Dir	DLS	Build Rate	Turn Rate	Comments
[ft]	[°]	[°]	[ft]	[ft]	[ft]	[ft]	[US ft]	[US ft]			[ft]	[°]	[°/100ft]	[°/100ft]	[°/100ft]	
0.00	0.00	52.650	0.00	0.00	0.00	0.00	1718076.52	14353739.93	39°31'35.2720"N	80°43'28.5390"W	0.00	0.000	0.00	0.00	0.00	
30.00	0.000	52.650	30.00	0.00	0.00	0.00	1718076.52	14353739.93	39°31'35.2720"N	80°43'28.5390"W	0.00	0.000	0.00	0.00	0.00	
100.00	0.100	52.650	100.00	-0.02	0.04	0.05	1718076.57	14353739.97	39°31'35.2724"N	80°43'28.5384"W	0.06	52.650	0.14	0.14	0.00	Gyrodata MS Gyro <17-1/2"> (100'-572')
200.00	0.210	71.020	200.00	-0.05	0.15	0.29	1718076.81	14353740.08	39°31'35.2735"N	80°43'28.5353"W	0.33	62.810	0.12	0.11	18.37	
300.00	0.230	70.910	300.00	-0.05	0.27	0.65	1718077.17	14353740.20	39°31'35.2747"N	80°43'28.5307"W	0.71	67.211	0.02	0.02	-0.11	
400.00	0.190	61.990	400.00	-0.07	0.42	0.99	1718077.51	14353740.35	39°31'35.2761"N	80°43'28.5264"W	1.08	67.097	0.05	-0.04	-8.92	
500.00	0.220	81.360	500.00	-0.06	0.53	1.33	1718077.85	14353740.45	39°31'35.2772"N	80°43'28.5221"W	1.43	68.404	0.08	0.03	19.37	
572.00	0.310	73.370	572.00	-0.03	0.60	1.65	1718078.17	14353740.53	39°31'35.2779"N	80°43'28.5180"W	1.76	69.966	0.13	0.12	-11.10	
632.00	0.090	54.630	632.00	-0.04	0.68	1.84	1718078.36	14353740.61	39°31'35.2786"N	80°43'28.5155"W	1.96	69.883	0.38	-0.37	-31.23	Gyrodata MS Gyro <12-1/4"> (572')(632'-933')
700.00	0.090	269.950	700.00	-0.07	0.71	1.83	1718078.35	14353740.64	39°31'35.2790"N	80°43'28.5156"W	1.97	68.939	0.25	0.00	-212.76	
800.00	3.030	240.430	799.95	0.39	-0.60	-0.54	1718075.98	14353739.33	39°31'35.2661"N	80°43'28.5460"W	0.81	222.269	2.95	2.94	-29.52	
900.00	5.690	243.530	899.65	1.51	-4.11	-7.28	1718069.24	14353735.82	39°31'35.2316"N	80°43'28.6321"W	8.36	240.540	2.67	2.66	3.10	
933.00	6.420	243.670	932.47	1.95	-5.66	-10.40	1718066.12	14353734.27	39°31'35.2164"N	80°43'28.6720"W	11.84	241.441	2.21	2.21	0.42	
1159.00	12.630	250.060	1155.25	3.93	-19.71	-44.99	1718031.55	14353720.23	39°31'35.0786"N	80°43'29.1139"W	49.11	246.345	2.78	2.75	2.83	APS EM <12-1/4"> (933')(1159'-2714')
1253.00	16.510	264.480	1246.24	0.95	-24.50	-67.96	1718008.59	14353715.44	39°31'35.0320"N	80°43'29.4072"W	72.24	250.176	5.62	4.13	15.34	
1348.00	20.570	271.790	1336.30	-8.16	-25.28	-98.09	1717978.47	14353714.66	39°31'35.0252"N	80°43'29.7918"W	101.29	255.551	4.92	4.27	7.69	
1442.00	23.240	269.900	1423.51	-20.07	-24.79	-133.15	1717943.42	14353715.15	39°31'35.0310"N	80°43'30.2392"W	135.44	259.452	2.94	2.84	-2.01	
1537.00	25.810	266.060	1509.93	-31.56	-26.25	-172.53	1717904.06	14353713.69	39°31'35.0178"N	80°43'30.7418"W	174.52	261.350	3.18	2.71	-4.04	
1627.00	28.010	260.980	1590.19	-40.37	-30.91	-212.96	1717863.64	14353709.04	39°31'34.9730"N	80°43'31.2579"W	215.19	261.742	3.53	2.44	-5.64	
1722.00	28.420	254.750	1673.92	-45.77	-40.35	-256.81	1717819.81	14353699.59	39°31'34.8810"N	80°43'31.8179"W	259.96	261.070	3.13	0.43	-6.56	
1816.00	28.900	249.190	1756.42	-46.57	-54.31	-299.63	1717777.00	14353685.64	39°31'34.7443"N	80°43'32.3649"W	304.52	259.727	2.88	0.51	-5.91	
1911.00	28.770	242.360	1839.67	-42.46	-73.08	-341.36	1717735.30	14353666.88	39°31'34.5601"N	80°43'32.8981"W	349.09	257.917	3.47	-0.14	-7.19	
2006.00	29.820	238.650	1922.52	-34.03	-95.97	-381.79	1717694.89	14353644.00	39°31'34.3350"N	80°43'33.4149"W	393.66	255.889	2.21	1.11	-3.91	
2101.00	29.490	236.910	2005.08	-23.34	-121.03	-421.55	1717655.14	14353618.95	39°31'34.0886"N	80°43'33.9234"W	438.58	253.981	0.97	-0.35	-1.83	
2195.00	29.480	237.770	2086.91	-12.47	-146.00	-460.50	1717616.20	14353593.99	39°31'33.8430"N	80°43'34.4214"W	483.09	252.409	0.45	-0.01	0.91	
2290.00	28.760	236.840	2169.90	-1.59	-170.96	-499.41	1717577.31	14353569.03	39°31'33.5974"N	80°43'34.9189"W	527.86	251.102	0.90	-0.76	-0.98	
2385.00	28.260	234.370	2253.38	10.39	-196.57	-536.82	1717539.91	14353543.44	39°31'33.3455"N	80°43'35.3973"W	571.68	249.889	1.35	-0.53	-2.60	
2479.00	29.460	235.830	2335.71	22.75	-222.51	-574.03	1717502.71	14353517.50	39°31'33.0902"N	80°43'35.8732"W	615.65	248.812	1.48	1.28	1.55	
2574.00	29.940	236.740	2418.23	34.65	-248.64	-613.19	1717463.58	14353491.39	39°31'32.8332"N	80°43'36.3739"W	661.68	247.928	0.69	0.51	0.96	
2668.00	30.610	240.070	2499.41	44.91	-273.44	-653.55	1717423.23	14353466.59	39°31'32.5892"N	80°43'36.8899"W	708.44	247.295	1.92	0.71	3.54	

RECEIVED
Office of Oil and Gas
FEB 07 2023
WV Department of
Environmental Protection

SM



Actual Wellpath Report

Orner Unit 1H AWP Proj: 23718'
Page 3 of 13



REFERENCE WELLPATH IDENTIFICATION			
Operator	ANTERO RESOURCES CORPORATION	Well	Orner Unit 1H
Field	Wetzel	API	47-103-03428-0000
Facility	Dogwood Pad	Wellbore	Orner Unit 1H AWB
Slot	Slot #01		

WELLPATH DATA (261 stations)																
MD	Inclination	Azimuth	TVD	Vert Sect	North	East	Grid East	Grid North	Latitude	Longitude	Closure Dist	Closure Dir	DLS	Build Rate	Turn Rate	Comments
[ft]	[°]	[°]	[ft]	[ft]	[ft]	[ft]	[US ft]	[US ft]			[ft]	[°]	[°/100ft]	[°/100ft]	[°/100ft]	
2714.00	30.680	240.050	2538.99	49.33	-285.15	-673.86	1717402.92	14353454.90	39°31'32.4741"N	80°43'37.1496"W	731.71	247.064	0.15	0.15	-0.04	
2854.00	29.810	234.040	2659.96	66.19	-323.42	-732.99	1717343.82	14353416.64	39°31'32.0976"N	80°43'37.9057"W	801.17	246.191	2.25	-0.62	-4.29	APS EM <8-3/4"> (2714')(2854'-7120')
2949.00	31.510	237.810	2741.68	78.69	-350.52	-773.12	1717303.70	14353389.55	39°31'31.8310"N	80°43'38.4188"W	848.87	245.611	2.70	1.79	3.97	
3046.00	32.090	243.940	2824.14	87.58	-375.35	-817.73	1717259.11	14353364.73	39°31'31.5870"N	80°43'38.9891"W	899.76	245.344	3.38	0.60	6.32	
3140.00	31.800	250.440	2903.93	90.83	-394.62	-863.51	1717213.35	14353345.47	39°31'31.3979"N	80°43'39.5740"W	949.41	245.440	3.67	-0.31	6.91	
3235.00	31.870	247.730	2984.64	92.44	-412.50	-910.31	1717166.57	14353327.59	39°31'31.2225"N	80°43'40.1719"W	999.41	245.623	1.51	0.07	-2.85	
3329.00	30.720	250.010	3064.97	94.21	-430.11	-955.84	1717121.06	14353309.99	39°31'31.0498"N	80°43'40.7536"W	1048.16	245.773	1.76	-1.22	2.43	
3424.00	30.640	249.900	3146.67	95.04	-446.73	-1001.38	1717075.54	14353293.38	39°31'30.8870"N	80°43'41.3354"W	1096.51	245.958	0.10	-0.08	-0.12	
3519.00	30.850	246.140	3228.33	97.51	-464.90	-1046.39	1717030.54	14353275.21	39°31'30.7087"N	80°43'41.9105"W	1145.02	246.045	2.04	0.22	-3.96	
3613.00	28.540	247.950	3309.98	100.69	-483.08	-1089.25	1716987.70	14353257.04	39°31'30.5303"N	80°43'42.4582"W	1191.57	246.083	2.64	-2.46	1.93	
3708.00	27.710	247.690	3393.76	103.12	-499.99	-1130.72	1716946.24	14353240.14	39°31'30.3644"N	80°43'42.9880"W	1236.33	246.146	0.88	-0.87	-0.27	
3802.00	26.830	243.900	3477.32	106.95	-517.62	-1170.00	1716906.99	14353222.51	39°31'30.1914"N	80°43'43.4899"W	1279.38	246.135	2.07	-0.94	-4.03	
3897.00	27.170	246.330	3561.97	111.31	-535.76	-1209.12	1716867.88	14353204.38	39°31'30.0132"N	80°43'43.9898"W	1322.50	246.102	1.22	0.36	2.56	
3992.00	26.560	246.220	3646.71	114.80	-553.03	-1248.42	1716828.60	14353187.12	39°31'29.8437"N	80°43'44.4920"W	1365.43	246.107	0.64	-0.64	-0.12	
4087.00	25.310	243.070	3732.15	119.32	-570.79	-1285.96	1716791.07	14353169.36	39°31'29.6693"N	80°43'44.9718"W	1406.95	246.065	1.96	-1.32	-3.32	
4182.00	26.170	245.510	3817.72	124.07	-588.68	-1323.13	1716753.91	14353151.49	39°31'29.4936"N	80°43'45.4468"W	1448.18	246.015	1.44	0.91	2.57	
4276.00	26.170	245.080	3902.09	128.14	-606.00	-1360.79	1716716.26	14353134.17	39°31'29.3235"N	80°43'45.9281"W	1489.63	245.995	0.20	0.00	-0.46	
4371.00	27.020	246.080	3987.04	132.10	-623.58	-1399.52	1716677.55	14353116.60	39°31'29.1509"N	80°43'46.4230"W	1532.16	245.984	1.01	0.89	1.05	
4466.00	28.310	247.270	4071.17	135.37	-641.04	-1440.02	1716637.06	14353099.15	39°31'28.9796"N	80°43'46.9405"W	1576.26	246.003	1.48	1.36	1.25	
4560.00	30.500	251.130	4153.07	136.71	-657.37	-1483.16	1716593.94	14353082.82	39°31'28.8195"N	80°43'47.4917"W	1622.32	246.096	3.08	2.33	4.11	
4655.00	28.690	249.480	4235.67	137.20	-673.16	-1527.34	1716549.79	14353067.04	39°31'28.6647"N	80°43'48.0560"W	1669.10	246.215	2.09	-1.91	-1.74	
4750.00	29.060	249.340	4318.86	138.42	-689.29	-1570.28	1716506.86	14353050.91	39°31'28.5066"N	80°43'48.6046"W	1714.91	246.300	0.40	0.39	-0.15	
4845.00	31.200	251.000	4401.02	139.03	-705.45	-1615.14	1716462.02	14353034.76	39°31'28.3482"N	80°43'49.1777"W	1762.48	246.406	2.42	2.25	1.75	
4940.00	31.920	251.760	4481.97	138.63	-721.32	-1662.26	1716414.91	14353018.90	39°31'28.1928"N	80°43'49.7796"W	1812.02	246.542	0.87	0.76	0.80	
5039.00	30.220	249.830	4566.77	138.73	-738.10	-1710.51	1716366.69	14353002.12	39°31'28.0283"N	80°43'50.3960"W	1862.97	246.659	1.99	-1.72	-1.95	
5134.00	28.140	246.530	4649.71	140.91	-755.27	-1753.51	1716323.70	14352984.96	39°31'27.8599"N	80°43'50.9453"W	1909.25	246.698	2.77	-2.19	-3.47	
5229.00	29.760	247.070	4732.84	144.22	-773.38	-1795.77	1716281.45	14352966.86	39°31'27.6822"N	80°43'51.4854"W	1955.23	246.700	1.73	1.71	0.57	
5323.00	31.460	246.940	4813.74	147.49	-792.08	-1839.83	1716237.41	14352948.16	39°31'27.4987"N	80°43'52.0483"W	2003.09	246.707	1.81	1.81	-0.14	
5418.00	30.700	242.810	4895.11	152.64	-812.87	-1884.22	1716193.04	14352927.38	39°31'27.2945"N	80°43'52.6155"W	2052.08	246.664	2.38	-0.80	-4.35	
5512.00	30.280	242.990	4976.11	159.31	-834.60	-1926.68	1716150.60	14352905.66	39°31'27.0810"N	80°43'53.1582"W	2099.68	246.579	0.46	-0.45	0.19	



Actual Wellpath Report

Orner Unit 1H AWP Proj: 23718'
Page 4 of 13



REFERENCE WELLPATH IDENTIFICATION				
Operator	ANTERO RESOURCES CORPORATION		Well	Orner Unit 1H
Field	Wetzel		API	47-103-03428-0000
Facility	Dogwood Pad		Wellbore	Orner Unit 1H AWP
Slot	Slot #01			

WELLPATH DATA (261 stations) † = interpolated, ‡ = extrapolated station																
MD	Inclination	Azimuth	TVD	Vert Sect	North	East	Grid East	Grid North	Latitude	Longitude	Closure Dist	Closure Dir	DLS	Build Rate	Turn Rate	Comments
[ft]	[°]	[°]	[ft]	[ft]	[ft]	[ft]	[US ft]	[US ft]			[ft]	[°]	[°/100ft]	[°/100ft]	[°/100ft]	
5607.00	30.960	247.470	5057.87	164.09	-854.84	-1970.59	1716106.71	14352885.42	39°31'26.8822"N	80°43'53.7194"W	2148.02	246.549	2.51	0.72	4.72	
5702.00	30.970	250.140	5139.34	165.90	-872.51	-2016.16	1716061.16	14352867.76	39°31'26.7089"N	80°43'54.3015"W	2196.85	246.599	1.45	0.01	2.81	
5797.00	30.160	247.280	5221.14	167.76	-890.03	-2061.16	1716016.17	14352850.25	39°31'26.5371"N	80°43'54.8764"W	2245.12	246.645	1.75	-0.85	-3.01	
5891.00	29.170	241.890	5302.83	172.86	-909.95	-2103.16	1715974.19	14352830.34	39°31'26.3415"N	80°43'55.4131"W	2291.57	246.604	3.03	-1.05	-5.73	
5986.00	28.350	244.350	5386.12	179.09	-930.62	-2143.91	1715933.45	14352809.67	39°31'26.1383"N	80°43'55.9340"W	2337.18	246.535	1.52	-0.86	2.59	
6080.00	29.760	247.650	5468.29	182.98	-949.16	-2185.61	1715891.77	14352791.15	39°31'25.9564"N	80°43'56.4668"W	2382.81	246.526	2.27	1.50	3.51	
6175.00	30.530	251.370	5550.45	184.14	-965.83	-2230.29	1715847.11	14352774.48	39°31'25.7929"N	80°43'57.0376"W	2430.44	246.585	2.13	0.81	3.92	
6270.00	29.880	250.120	5632.55	184.29	-981.59	-2275.41	1715802.01	14352758.73	39°31'25.6385"N	80°43'57.6139"W	2478.10	246.665	0.95	-0.68	-1.32	
6364.00	28.860	247.230	5714.47	186.09	-998.33	-2318.35	1715759.09	14352741.99	39°31'25.4743"N	80°43'58.1625"W	2524.17	246.702	1.86	-1.09	-3.07	
6459.00	28.000	244.290	5798.02	190.14	-1016.88	-2359.58	1715717.87	14352723.45	39°31'25.2922"N	80°43'58.6894"W	2569.37	246.686	1.73	-0.91	-3.09	
6554.00	27.100	241.740	5882.25	196.18	-1036.80	-2398.74	1715678.73	14352703.54	39°31'25.0964"N	80°43'59.1898"W	2613.22	246.625	1.56	-0.95	-2.68	
6648.00	28.170	242.250	5965.52	202.95	-1057.27	-2437.23	1715640.25	14352683.08	39°31'24.8953"N	80°43'59.6819"W	2656.68	246.549	1.17	1.14	0.54	
6743.00	29.780	243.080	6048.63	209.55	-1078.40	-2478.12	1715599.38	14352661.96	39°31'24.6877"N	80°44'0.2044"W	2702.59	246.483	1.75	1.69	0.87	
6838.00	29.580	244.770	6131.17	215.29	-1099.07	-2520.36	1715557.15	14352641.29	39°31'24.4846"N	80°44'0.7443"W	2749.58	246.439	0.91	-0.21	1.78	
6932.00	28.590	239.130	6213.33	222.38	-1120.51	-2560.67	1715516.87	14352619.87	39°31'24.2739"N	80°44'1.2594"W	2795.09	246.367	3.10	-1.05	-6.00	
7027.00	29.240	240.240	6296.49	231.34	-1143.69	-2600.32	1715477.23	14352596.70	39°31'24.0460"N	80°44'1.7663"W	2840.72	246.259	0.89	0.68	1.17	
7120.00	29.390	237.670	6377.58	240.78	-1167.16	-2639.32	1715438.24	14352573.23	39°31'23.8151"N	80°44'2.2649"W	2885.88	246.144	1.36	0.16	-2.76	
7215.00	29.320	237.360	6460.38	251.59	-1192.18	-2678.61	1715398.97	14352548.22	39°31'23.5690"N	80°44'2.7671"W	2931.93	246.007	0.18	-0.07	-0.33	BH AT Curve <8-1/2"> (7120')(7215'-23684')
7309.00	29.430	248.470	6542.36	257.98	-1213.08	-2719.50	1715358.10	14352527.33	39°31'23.3636"N	80°44'3.2897"W	2977.79	245.960	5.79	0.12	11.82	
7404.00	30.500	237.710	6624.72	264.50	-1234.54	-2761.62	1715315.99	14352505.88	39°31'23.1527"N	80°44'3.8281"W	3025.00	245.914	5.76	1.13	-11.33	
7498.00	32.830	217.860	6704.94	283.92	-1267.50	-2797.53	1715280.10	14352472.93	39°31'22.8281"N	80°44'4.2875"W	3071.27	245.626	11.31	2.48	-21.12	
7581.00†	36.491	201.930	6773.34	314.90	-1308.25	-2820.61	1715257.02	14352432.19	39°31'22.4259"N	80°44'4.5836"W	3109.24	245.117	11.74	4.41	-19.19	Sycamore: 7581' MD
7593.00	37.180	199.880	6782.95	320.41	-1314.97	-2823.18	1715254.46	14352425.48	39°31'22.3596"N	80°44'4.6166"W	3114.40	245.025	11.74	5.74	-17.08	
7687.00	41.210	186.270	6855.92	370.60	-1372.59	-2836.25	1715241.39	14352367.88	39°31'21.7905"N	80°44'4.7855"W	3150.92	244.175	10.08	4.29	-14.48	
7751.00†	46.331	181.325	6902.13	411.39	-1416.73	-2839.09	1715238.55	14352323.76	39°31'21.3543"N	80°44'4.8234"W	3172.94	243.480	9.62	8.00	-7.73	Middlesex: 7751' MD
7782.00	48.880	179.230	6923.03	432.99	-1439.62	-2839.19	1715238.45	14352300.88	39°31'21.1281"N	80°44'4.8256"W	3183.32	243.113	9.62	8.22	-6.76	
7876.00	56.640	172.370	6979.92	505.25	-1514.11	-2833.49	1715244.15	14352226.42	39°31'20.3918"N	80°44'4.7557"W	3212.66	241.882	10.09	8.26	-7.30	
7922.00†	60.179	169.545	7004.01	543.82	-1552.79	-2827.31	1715250.32	14352187.76	39°31'20.0093"N	80°44'4.6783"W	3225.66	241.224	9.30	7.69	-6.14	Burkett: 7922' MD
7971.00	64.010	166.750	7026.94	586.77	-1595.15	-2818.40	1715259.23	14352145.41	39°31'19.5904"N	80°44'4.5662"W	3238.50	240.491	9.30	7.82	-5.70	
7996.00†	65.803	165.540	7037.55	609.31	-1617.13	-2812.98	1715264.65	14352123.44	39°31'19.3730"N	80°44'4.4979"W	3244.68	240.106	8.41	7.17	-4.84	Tully: 7996' MD

RECEIVED
Office of Oil and Gas
FEB 07 2023
WV Department of
Environmental Protection



Actual Wellpath Report

Orner Unit 1H AWP Proj: 23718'
Page 5 of 13



REFERENCE WELLPATH IDENTIFICATION			
Operator	ANTERO RESOURCES CORPORATION	Well	Orner Unit 1H
Field	Wetzel	API	47-103-03428-0000
Facility	Dogwood Pad	Wellbore	Orner Unit 1H AWB
Slot	Slot #01		

WELLPATH DATA (261 stations) † = interpolated, ‡ = extrapolated station																
MD	Inclination	Azimuth	TVD	Vert Sect	North	East	Grid East	Grid North	Latitude	Longitude	Closure Dist	Closure Dir	DLS	Build Rate	Turn Rate	Comments
[ft]	[°]	[°]	[ft]	[ft]	[ft]	[ft]	[US ft]	[US ft]			[ft]	[°]	[°/100ft]	[°/100ft]	[°/100ft]	
8066.00	70.870	162.320	7063.38	674.25	-1679.60	-2794.95	1715282.67	14352060.99	39°31'18.7550"N	80°44'4.2701"W	3260.80	238.997	8.41	7.24	-4.60	
8126.00†	74.296	159.870	7081.34	731.49	-1733.75	-2776.40	1715301.22	14352006.87	39°31'18.2194"N	80°44'4.0354"W	3273.26	238.017	6.91	5.71	-4.08	Hamilton: 8126' MD
8132.00	74.640	159.630	7082.95	737.27	-1739.17	-2774.40	1715303.22	14352001.45	39°31'18.1657"N	80°44'4.0101"W	3274.44	237.918	6.91	5.74	-4.00	
8161.00	74.510	160.010	7090.66	765.22	-1765.41	-2764.75	1715312.86	14351975.22	39°31'17.9061"N	80°44'3.8880"W	3280.32	237.440	1.34	-0.45	1.31	
8255.00	76.140	159.450	7114.48	856.13	-1850.71	-2733.25	1715344.35	14351889.95	39°31'17.0622"N	80°44'3.4892"W	3300.87	235.898	1.83	1.73	-0.60	
8260.00†	76.465	159.548	7115.66	860.98	-1855.26	-2731.55	1715346.05	14351885.41	39°31'17.0171"N	80°44'3.4677"W	3302.02	235.816	6.78	6.51	1.96	Marcellus POE: 8260' MD
8302.00	79.200	160.360	7124.51	902.03	-1893.82	-2717.48	1715360.12	14351846.86	39°31'16.6356"N	80°44'3.2896"W	3312.29	235.127	6.78	6.51	1.93	
8350.00	83.770	159.370	7131.62	949.48	-1938.38	-2701.14	1715376.45	14351802.32	39°31'16.1947"N	80°44'3.0827"W	3324.67	234.336	9.74	9.52	-2.06	
8444.00	89.290	159.440	7137.30	1043.24	-2026.18	-2668.15	1715409.43	14351714.55	39°31'15.3260"N	80°44'2.6651"W	3350.28	232.787	5.87	5.87	0.07	
8539.00	89.260	159.840	7138.51	1138.20	-2115.23	-2635.10	1715442.46	14351625.53	39°31'14.4449"N	80°44'2.2467"W	3379.05	231.245	0.42	-0.03	0.42	
8634.00	89.170	159.490	7139.81	1233.17	-2204.31	-2602.09	1715475.46	14351536.50	39°31'13.5636"N	80°44'1.8288"W	3410.25	229.731	0.38	-0.09	-0.37	
8728.00	89.290	160.230	7141.07	1327.15	-2292.55	-2569.72	1715507.81	14351448.29	39°31'12.6905"N	80°44'1.4192"W	3443.73	228.263	0.80	0.13	0.79	
8823.00	89.050	160.530	7142.45	1422.13	-2382.02	-2537.83	1715539.69	14351358.85	39°31'11.8053"N	80°44'1.0156"W	3480.60	226.814	0.40	-0.25	0.32	
8917.00	89.110	159.960	7143.96	1516.11	-2470.48	-2506.06	1715571.45	14351270.43	39°31'10.9301"N	80°44'0.6135"W	3519.04	225.410	0.61	0.06	-0.61	
9012.00	88.740	159.510	7145.74	1611.07	-2559.58	-2473.16	1715604.34	14351181.36	39°31'10.0485"N	80°44'0.1971"W	3559.21	224.016	0.61	-0.39	-0.47	
9107.00	88.920	160.880	7147.68	1706.04	-2648.94	-2440.98	1715636.50	14351092.03	39°31'9.1644"N	80°43'59.7899"W	3602.12	222.660	1.45	0.19	1.44	
9202.00	90.400	165.260	7148.24	1800.95	-2739.80	-2413.33	1715664.15	14351001.21	39°31'8.2656"N	80°43'59.4404"W	3651.12	221.375	4.87	1.56	4.61	
9296.00	88.860	159.650	7148.85	1894.88	-2829.39	-2385.00	1715692.46	14350911.66	39°31'7.3794"N	80°43'59.0824"W	3700.50	220.129	6.19	-1.64	-5.97	
9391.00	89.200	161.230	7150.46	1989.85	-2918.89	-2353.20	1715724.25	14350822.19	39°31'6.4939"N	80°43'58.6800"W	3749.33	218.876	1.70	0.36	1.66	
9485.00	89.200	161.570	7151.77	2083.84	-3007.97	-2323.22	1715754.21	14350733.15	39°31'5.6126"N	80°43'58.3008"W	3800.69	217.681	0.36	0.00	0.36	
9580.00	89.660	162.050	7152.72	2178.83	-3098.22	-2293.57	1715783.86	14350642.94	39°31'4.7198"N	80°43'57.9259"W	3854.79	216.512	0.70	0.48	0.51	
9675.00	89.290	162.450	7153.59	2273.80	-3188.69	-2264.61	1715812.81	14350552.50	39°31'3.8248"N	80°43'57.5597"W	3911.04	215.382	0.57	-0.39	0.42	
9770.00	89.940	162.310	7154.23	2368.76	-3279.23	-2235.85	1715841.55	14350461.99	39°31'2.9291"N	80°43'57.1963"W	3968.93	214.287	0.70	0.68	-0.15	
9865.00	89.230	161.870	7154.91	2463.74	-3369.62	-2206.64	1715870.75	14350371.64	39°31'2.0348"N	80°43'56.8269"W	4027.86	213.219	0.88	-0.75	-0.46	
9959.00	89.420	161.380	7156.02	2557.73	-3458.83	-2177.01	1715900.37	14350282.47	39°31'1.1524"N	80°43'56.4522"W	4086.91	212.187	0.56	0.20	-0.52	
10054.00	89.420	161.570	7156.98	2652.72	-3548.90	-2146.83	1715930.54	14350192.43	39°31'0.2613"N	80°43'56.0705"W	4147.72	211.171	0.20	0.00	0.20	
10149.00	89.570	161.710	7157.82	2747.71	-3639.06	-2116.90	1715960.45	14350102.31	39°30'59.3693"N	80°43'55.6922"W	4209.99	210.187	0.22	0.16	0.15	
10244.00	89.630	162.740	7158.48	2842.68	-3729.52	-2087.90	1715989.44	14350011.88	39°30'58.4744"N	80°43'55.3255"W	4274.19	209.241	1.09	0.06	1.08	
10338.00	89.230	161.540	7159.42	2936.65	-3818.98	-2059.08	1716018.26	14349922.45	39°30'57.5894"N	80°43'54.9611"W	4338.71	208.332	1.35	-0.43	-1.28	
10433.00	89.230	161.540	7160.69	3031.64	-3909.09	-2029.00	1716048.32	14349832.39	39°30'56.6979"N	80°43'54.5808"W	4404.29	207.431	0.00	0.00	0.00	



Actual Wellpath Report

Orner Unit 1H AWP Proj: 23718'
Page 6 of 13



REFERENCE WELLPATH IDENTIFICATION			
Operator	ANTERO RESOURCES CORPORATION	Well	Orner Unit 1H
Field	Wetzel	API	47-103-03428-0000
Facility	Dogwood Pad	Wellbore	Orner Unit 1H AWB
Slot	Slot #01		

WELLPATH DATA (261 stations)																
MD [ft]	Inclination [°]	Azimuth [°]	TVD [ft]	Vert Sect [ft]	North [ft]	East [ft]	Grid East [US ft]	Grid North [US ft]	Latitude	Longitude	Closure Dist [ft]	Closure Dir [°]	DLS [°/100ft]	Build Rate [°/100ft]	Turn Rate [°/100ft]	Comments
10528.00	91.450	162.610	7160.13	3126.61	-3999.47	-1999.76	1716077.55	14349742.04	39°30'55.8038"N	80°43'54.2112"W	4471.55	206.565	2.59	2.34	1.13	
10622.00	90.490	163.350	7158.54	3220.53	-4089.34	-1972.25	1716105.05	14349652.21	39°30'54.9148"N	80°43'53.8636"W	4540.09	205.748	1.29	-1.02	0.79	
10717.00	92.000	161.620	7156.48	3315.47	-4179.90	-1943.67	1716133.62	14349561.68	39°30'54.0189"N	80°43'53.5023"W	4609.71	204.939	2.42	1.59	-1.82	
10812.00	89.690	160.520	7155.07	3410.45	-4269.75	-1912.86	1716164.42	14349471.87	39°30'53.1300"N	80°43'53.1126"W	4678.65	204.132	2.69	-2.43	-1.16	
10907.00	89.600	160.600	7155.66	3505.45	-4359.33	-1881.24	1716196.02	14349382.32	39°30'52.2437"N	80°43'52.7126"W	4747.93	203.342	0.13	-0.09	0.08	
11001.00	89.320	160.470	7156.55	3599.44	-4447.96	-1849.92	1716227.33	14349293.73	39°30'51.3669"N	80°43'52.3163"W	4817.31	202.583	0.33	-0.30	-0.14	
11096.00	90.990	162.700	7156.29	3694.43	-4538.08	-1819.91	1716257.33	14349203.64	39°30'50.4753"N	80°43'51.9369"W	4889.40	201.852	2.93	1.76	2.35	
11190.00	89.450	160.900	7155.93	3788.41	-4627.37	-1790.55	1716286.67	14349114.39	39°30'49.5919"N	80°43'51.5657"W	4961.72	201.154	2.52	-1.64	-1.91	
11285.00	90.370	160.810	7156.08	3883.41	-4717.12	-1759.40	1716317.82	14349024.68	39°30'48.7040"N	80°43'51.1716"W	5034.55	200.455	0.97	0.97	-0.09	
11380.00	89.660	162.100	7156.06	3978.40	-4807.18	-1729.18	1716348.02	14348934.65	39°30'47.8130"N	80°43'50.7895"W	5108.72	199.784	1.55	-0.75	1.36	
11474.00	89.380	161.100	7156.84	4072.39	-4896.37	-1699.51	1716377.68	14348845.49	39°30'46.9306"N	80°43'50.4144"W	5182.93	199.142	1.10	-0.30	-1.06	
11569.00	89.910	161.730	7157.43	4167.38	-4986.41	-1669.24	1716407.94	14348755.49	39°30'46.0398"N	80°43'50.0315"W	5258.39	198.508	0.87	0.56	0.66	
11664.00	89.290	160.390	7158.10	4262.38	-5076.27	-1638.40	1716438.76	14348665.67	39°30'45.1509"N	80°43'49.6415"W	5334.12	197.888	1.55	-0.65	-1.41	
11758.00	89.290	160.450	7159.26	4356.37	-5164.82	-1606.91	1716470.25	14348577.15	39°30'44.2747"N	80°43'49.2430"W	5409.03	197.282	0.06	0.00	0.06	
11853.00	89.380	160.200	7160.36	4451.35	-5254.27	-1574.92	1716502.22	14348487.73	39°30'43.3897"N	80°43'48.8384"W	5485.23	196.686	0.28	0.09	-0.26	
11948.00	89.540	160.960	7161.26	4546.35	-5343.86	-1543.34	1716533.79	14348398.18	39°30'42.5033"N	80°43'48.4388"W	5562.26	196.109	0.82	0.17	0.80	
12042.00	89.880	161.650	7161.73	4640.34	-5432.90	-1513.21	1716563.91	14348309.18	39°30'41.6224"N	80°43'48.0578"W	5639.70	195.564	0.82	0.36	0.73	
12137.00	89.690	161.900	7162.09	4735.33	-5523.13	-1483.50	1716593.61	14348218.98	39°30'40.7297"N	80°43'47.6822"W	5718.90	195.035	0.33	-0.20	0.26	
12232.00	89.050	160.750	7163.13	4830.32	-5613.13	-1453.08	1716624.01	14348129.02	39°30'39.8394"N	80°43'47.2975"W	5798.16	194.514	1.39	-0.67	-1.21	
12327.00	89.540	160.840	7164.30	4925.31	-5702.83	-1421.83	1716655.25	14348039.35	39°30'38.9519"N	80°43'46.9023"W	5877.41	194.000	0.52	0.52	0.09	
12421.00	89.320	160.640	7165.24	5019.31	-5791.57	-1390.83	1716686.24	14347950.65	39°30'38.0740"N	80°43'46.5101"W	5956.23	193.504	0.32	-0.23	-0.21	
12516.00	89.820	161.390	7165.95	5114.31	-5881.39	-1359.92	1716717.13	14347860.86	39°30'37.1853"N	80°43'46.1193"W	6036.57	193.019	0.95	0.53	0.79	
12611.00	89.690	162.120	7166.36	5209.29	-5971.62	-1330.18	1716746.86	14347770.67	39°30'36.2927"N	80°43'45.7432"W	6117.97	192.558	0.78	-0.14	0.77	
12705.00	88.830	160.220	7167.57	5303.28	-6060.57	-1299.85	1716777.19	14347681.75	39°30'35.4126"N	80°43'45.3596"W	6198.40	192.105	2.22	-0.91	-2.02	
12800.00	90.830	161.110	7167.85	5398.27	-6150.21	-1268.40	1716808.63	14347592.15	39°30'34.5258"N	80°43'44.9618"W	6279.64	191.653	2.30	2.11	0.94	
12894.00	89.600	161.150	7167.50	5492.27	-6239.16	-1237.99	1716839.01	14347503.24	39°30'33.6458"N	80°43'44.5773"W	6360.79	191.223	1.31	-1.31	0.04	
12989.00	89.570	161.040	7168.19	5587.27	-6329.03	-1207.22	1716869.78	14347413.40	39°30'32.7566"N	80°43'44.1881"W	6443.13	190.799	0.12	-0.03	-0.12	
13084.00	90.550	161.970	7168.09	5682.26	-6419.12	-1177.08	1716899.91	14347323.35	39°30'31.8653"N	80°43'43.8071"W	6526.15	190.391	1.42	1.03	0.98	
13178.00	89.780	160.720	7167.82	5776.25	-6508.18	-1147.01	1716929.96	14347234.32	39°30'30.9843"N	80°43'43.4269"W	6608.48	189.995	1.56	-0.82	-1.33	
13273.00	90.180	161.460	7167.85	5871.25	-6598.05	-1116.23	1716960.74	14347144.49	39°30'30.0951"N	80°43'43.0376"W	6691.80	189.602	0.89	0.42	0.78	

RECEIVED
Office of Oil and Gas
FEB 07 2023
WV Department of
Environmental Protection



Actual Wellpath Report

Orner Unit 1H AWP Proj: 23718'
Page 7 of 13



REFERENCE WELLPATH IDENTIFICATION			
Operator	ANTERO RESOURCES CORPORATION	Well	Orner Unit 1H
Field	Wetzel	API	47-103-03428-0000
Facility	Dogwood Pad	Wellbore	Orner Unit 1H AWB
Slot	Slot #01		

WELLPATH DATA (261 stations)																
MD [ft]	Inclination [°]	Azimuth [°]	TVD [ft]	Vert Sect [ft]	North [ft]	East [ft]	Grid East [US ft]	Grid North [US ft]	Latitude	Longitude	Closure Dist [ft]	Closure Dir [°]	DLS [°/100ft]	Build Rate [°/100ft]	Turn Rate [°/100ft]	Comments
13368.00	89.690	161.140	7167.96	5966.25	-6688.03	-1085.77	1716991.18	14347054.54	39°30'29.2049"N	80°43'42.6524"W	6775.60	189.221	0.62	-0.52	-0.34	
13462.00	89.540	159.590	7168.59	6060.24	-6776.56	-1054.18	1717022.75	14346966.04	39°30'28.3290"N	80°43'42.2529"W	6858.07	188.842	1.66	-0.16	-1.65	
13557.00	89.540	159.670	7169.35	6155.21	-6865.62	-1021.12	1717055.81	14346877.02	39°30'27.4478"N	80°43'41.8344"W	6941.14	188.460	0.08	0.00	0.08	
13651.00	89.940	159.630	7169.78	6249.19	-6953.75	-988.43	1717088.48	14346788.92	39°30'26.5758"N	80°43'41.4208"W	7023.65	188.090	0.43	0.43	-0.04	
13746.00	89.880	158.970	7169.93	6344.15	-7042.62	-954.85	1717122.05	14346700.09	39°30'25.6965"N	80°43'40.9958"W	7107.05	187.721	0.70	-0.06	-0.69	
13841.00	89.970	159.340	7170.05	6439.10	-7131.40	-921.04	1717155.84	14346611.35	39°30'24.8180"N	80°43'40.5679"W	7190.63	187.359	0.40	0.09	0.39	
13935.00	89.880	160.480	7170.18	6533.09	-7219.68	-888.75	1717188.12	14346523.10	39°30'23.9446"N	80°43'40.1594"W	7274.18	187.018	1.22	-0.10	1.21	
14030.00	90.000	159.860	7170.28	6628.08	-7309.05	-856.53	1717220.33	14346433.77	39°30'23.0604"N	80°43'39.7517"W	7359.06	186.684	0.66	0.13	-0.65	
14124.00	90.310	161.110	7170.02	6722.07	-7397.64	-825.13	1717251.72	14346345.21	39°30'22.1838"N	80°43'39.3545"W	7443.52	186.364	1.37	0.33	1.33	
14219.00	90.150	160.680	7169.64	6817.07	-7487.41	-794.03	1717282.80	14346255.48	39°30'21.2957"N	80°43'38.9613"W	7529.40	186.054	0.48	-0.17	-0.45	
14314.00	90.060	159.950	7169.47	6912.07	-7576.86	-762.03	1717314.79	14346166.07	39°30'20.4107"N	80°43'38.5565"W	7615.08	185.743	0.77	-0.09	-0.77	
14408.00	90.980	161.570	7168.61	7006.06	-7665.60	-731.06	1717345.75	14346077.36	39°30'19.5327"N	80°43'38.1648"W	7700.38	185.448	1.98	0.98	1.72	
14503.00	90.090	161.340	7167.73	7101.05	-7755.66	-700.85	1717375.95	14345987.33	39°30'18.6417"N	80°43'37.7828"W	7787.26	185.164	0.97	-0.94	-0.24	
14598.00	89.850	161.190	7167.78	7196.05	-7845.63	-670.34	1717406.45	14345897.40	39°30'17.7516"N	80°43'37.3970"W	7874.21	184.884	0.30	-0.25	-0.16	
14692.00	89.420	160.550	7168.38	7290.04	-7934.43	-639.53	1717437.24	14345808.63	39°30'16.8730"N	80°43'37.0075"W	7960.17	184.608	0.82	-0.46	-0.68	
14787.00	89.350	160.250	7169.40	7385.03	-8023.93	-607.66	1717469.10	14345719.18	39°30'15.9876"N	80°43'36.6044"W	8046.90	184.331	0.32	-0.07	-0.32	
14882.00	89.660	161.100	7170.22	7480.03	-8113.57	-576.23	1717500.52	14345629.57	39°30'15.1006"N	80°43'36.2068"W	8134.00	184.062	0.95	0.33	0.89	
14976.00	89.660	161.240	7170.77	7574.03	-8202.54	-545.89	1717530.85	14345540.63	39°30'14.2204"N	80°43'35.8232"W	8220.68	183.807	0.15	0.00	0.15	
15071.00	89.820	160.820	7171.20	7669.03	-8292.38	-515.01	1717561.72	14345450.83	39°30'13.3316"N	80°43'35.4327"W	8308.35	183.554	0.47	0.17	-0.44	
15165.00	90.710	161.720	7170.77	7763.02	-8381.39	-484.82	1717591.89	14345361.85	39°30'12.4509"N	80°43'35.0511"W	8395.40	183.311	1.35	0.95	0.96	
15260.00	89.750	161.860	7170.39	7858.01	-8471.63	-455.14	1717621.56	14345271.64	39°30'11.5581"N	80°43'34.6759"W	8483.85	183.075	1.02	-1.01	0.15	
15355.00	90.460	161.440	7170.21	7953.00	-8561.80	-425.23	1717651.46	14345181.51	39°30'10.6661"N	80°43'34.2979"W	8572.36	182.843	0.87	0.75	-0.44	
15450.00	90.340	161.040	7169.55	8048.00	-8651.75	-394.68	1717682.00	14345091.59	39°30'9.7761"N	80°43'33.9116"W	8660.75	182.612	0.44	-0.13	-0.42	
15544.00	90.340	160.910	7168.99	8141.99	-8740.62	-364.04	1717712.63	14345002.77	39°30'8.8969"N	80°43'33.5241"W	8748.20	182.385	0.14	0.00	-0.14	
15639.00	90.430	160.910	7168.36	8236.99	-8830.39	-332.97	1717743.68	14344913.03	39°30'8.0088"N	80°43'33.1313"W	8836.67	182.159	0.09	0.09	0.00	
15734.00	90.460	160.950	7167.62	8331.99	-8920.17	-301.93	1717774.71	14344823.28	39°30'7.1205"N	80°43'32.7388"W	8925.28	181.939	0.05	0.03	0.04	
15828.00	90.430	161.090	7166.89	8425.99	-9009.06	-271.36	1717805.27	14344734.43	39°30'6.2410"N	80°43'32.3523"W	9013.15	181.725	0.15	-0.03	0.15	
15923.00	90.520	161.170	7166.10	8520.98	-9098.95	-240.63	1717835.98	14344644.57	39°30'5.3517"N	80°43'31.9638"W	9102.13	181.515	0.13	0.09	0.08	
16018.00	91.200	161.510	7164.67	8615.97	-9188.95	-210.24	1717866.36	14344554.61	39°30'4.4613"N	80°43'31.5796"W	9191.35	181.311	0.80	0.72	0.36	
16112.00	89.690	161.970	7163.94	8709.95	-9278.21	-180.79	1717895.80	14344465.39	39°30'3.5782"N	80°43'31.2074"W	9279.97	181.116	1.68	-1.61	0.49	



Actual Wellpath Report

Orner Unit 1H AWP Proj: 23718'
Page 8 of 13



REFERENCE WELLPATH IDENTIFICATION				
Operator	ANTERO RESOURCES CORPORATION		Well	Orner Unit 1H
Field	Wetzel		API	47-103-03428-0000
Facility	Dogwood Pad		Wellbore	Orner Unit 1H AWP
Slot	Slot #01			

WELLPATH DATA (261 stations)																
MD [ft]	Inclination [°]	Azimuth [°]	TVD [ft]	Vert Sect [ft]	North [ft]	East [ft]	Grid East [US ft]	Grid North [US ft]	Latitude	Longitude	Closure Dist [ft]	Closure Dir [°]	DLS [°/100ft]	Build Rate [°/100ft]	Turn Rate [°/100ft]	Comments
16207.00	90.120	161.130	7164.10	8804.95	-9368.32	-150.73	1717925.85	14344375.31	39°30'2.6867"N	80°43'30.8273"W	9369.54	180.922	0.99	0.45	-0.88	
16302.00	90.090	162.100	7163.93	8899.94	-9458.47	-120.76	1717955.80	14344285.19	39°30'1.7948"N	80°43'30.4486"W	9459.25	180.731	1.02	-0.03	1.02	
16396.00	90.030	161.550	7163.83	8993.93	-9547.78	-91.44	1717985.11	14344195.92	39°30'0.9113"N	80°43'30.0781"W	9548.22	180.549	0.59	-0.06	-0.59	
16491.00	90.220	162.060	7163.62	9088.91	-9638.03	-61.78	1718014.77	14344105.70	39°30'0.0184"N	80°43'29.7032"W	9638.23	180.367	0.57	0.20	0.54	
16586.00	89.570	161.430	7163.80	9183.90	-9728.25	-32.02	1718044.51	14344015.52	39°29'59.1258"N	80°43'29.3271"W	9728.30	180.189	0.95	-0.68	-0.66	
16680.00	89.380	161.800	7164.66	9277.89	-9817.45	-2.37	1718074.15	14343926.36	39°29'58.2434"N	80°43'28.9524"W	9817.45	180.014	0.44	-0.20	0.39	
16775.00	89.140	161.470	7165.88	9372.88	-9907.60	27.55	1718104.06	14343836.24	39°29'57.3515"N	80°43'28.5741"W	9907.64	179.841	0.43	-0.25	-0.35	
16870.00	90.090	161.950	7166.52	9467.87	-9997.80	57.37	1718133.86	14343746.08	39°29'56.4591"N	80°43'28.1973"W	9997.97	179.671	1.12	1.00	0.51	
16964.00	89.630	162.500	7166.75	9561.84	-10087.31	86.06	1718162.55	14343656.60	39°29'55.5736"N	80°43'27.8347"W	10087.68	179.511	0.76	-0.49	0.59	
17059.00	89.420	162.000	7167.54	9656.81	-10177.79	115.02	1718191.50	14343566.16	39°29'54.6785"N	80°43'27.4688"W	10178.44	179.353	0.57	-0.22	-0.53	
17154.00	89.350	160.820	7168.56	9751.80	-10267.82	145.31	1718221.77	14343476.16	39°29'53.7877"N	80°43'27.0860"W	10268.85	179.189	1.24	-0.07	-1.24	
17248.00	89.420	161.430	7169.57	9845.80	-10356.76	175.71	1718252.16	14343387.26	39°29'52.9078"N	80°43'26.7016"W	10358.25	179.028	0.65	0.07	0.65	
17343.00	89.820	163.730	7170.20	9940.75	-10447.40	204.15	1718280.59	14343296.66	39°29'52.0112"N	80°43'26.3424"W	10449.39	178.881	2.46	0.42	2.42	
17438.00	88.890	161.600	7171.27	10035.69	-10538.07	232.45	1718308.88	14343206.02	39°29'51.1141"N	80°43'25.9849"W	10540.63	178.736	2.45	-0.98	-2.24	
17533.00	89.290	159.680	7172.78	10130.67	-10627.68	263.94	1718340.36	14343116.45	39°29'50.2275"N	80°43'25.5868"W	10630.96	178.577	2.06	0.42	-2.02	
17627.00	89.230	159.580	7173.99	10224.64	-10715.80	296.66	1718373.06	14343028.37	39°29'49.3557"N	80°43'25.1729"W	10719.90	178.414	0.12	-0.06	-0.11	
17722.00	89.540	159.710	7175.01	10319.61	-10804.86	329.70	1718406.09	14342939.34	39°29'48.4744"N	80°43'24.7549"W	10809.89	178.252	0.35	0.33	0.14	
17816.00	89.910	160.180	7175.46	10413.60	-10893.16	361.93	1718438.31	14342851.07	39°29'47.6008"N	80°43'24.3471"W	10899.17	178.097	0.64	0.39	0.50	
17911.00	89.570	160.350	7175.89	10508.59	-10982.58	394.01	1718470.38	14342761.69	39°29'46.7160"N	80°43'23.9414"W	10989.64	177.945	0.40	-0.36	0.18	
18006.00	88.890	158.400	7177.17	10603.54	-11071.48	427.47	1718503.82	14342672.83	39°29'45.8364"N	80°43'23.5181"W	11079.73	177.789	2.17	-0.72	-2.05	
18100.00	89.510	158.470	7178.48	10697.44	-11158.89	462.02	1718538.36	14342585.45	39°29'44.9715"N	80°43'23.0809"W	11168.45	177.629	0.66	0.66	0.07	
18195.00	89.290	159.060	7179.48	10792.37	-11247.43	496.43	1718572.75	14342496.94	39°29'44.0953"N	80°43'22.6455"W	11258.38	177.473	0.66	-0.23	0.62	
18289.00	90.060	159.520	7180.01	10886.33	-11335.36	529.67	1718605.98	14342409.05	39°29'43.2253"N	80°43'22.2249"W	11347.72	177.325	0.95	0.82	0.49	
18384.00	89.970	160.230	7179.99	10981.31	-11424.55	562.35	1718638.65	14342319.89	39°29'42.3427"N	80°43'21.8115"W	11438.39	177.182	0.75	-0.09	0.75	
18478.00	90.180	158.700	7179.86	11075.28	-11512.58	595.32	1718671.61	14342231.90	39°29'41.4718"N	80°43'21.3943"W	11527.96	177.040	1.64	0.22	-1.63	
18573.00	90.430	160.230	7179.36	11170.24	-11601.54	628.65	1718704.92	14342142.98	39°29'40.5915"N	80°43'20.9728"W	11618.56	176.898	1.63	0.26	1.61	
18668.00	89.570	158.620	7179.36	11265.20	-11690.47	662.03	1718738.29	14342054.07	39°29'39.7115"N	80°43'20.5504"W	11709.21	176.759	1.92	-0.91	-1.69	
18762.00	89.080	158.630	7180.46	11359.12	-11778.00	696.29	1718772.53	14341966.58	39°29'38.8454"N	80°43'20.1169"W	11798.57	176.617	0.52	-0.52	0.01	
18857.00	89.540	159.190	7181.61	11454.05	-11866.63	730.47	1718806.70	14341877.99	39°29'37.9684"N	80°43'19.6844"W	11889.09	176.478	0.76	0.48	0.59	
18952.00	89.570	159.750	7182.35	11549.02	-11955.60	763.79	1718840.00	14341789.06	39°29'37.0881"N	80°43'19.2629"W	11979.97	176.345	0.59	0.03	0.59	

RECEIVED
 Office of Oil and Gas
 FEB 07 2023
 WV Department of
 Environmental Protection



Actual Wellpath Report

Orner Unit 1H AWP Proj: 23718'

Page 9 of 13



REFERENCE WELLPATH IDENTIFICATION

Operator	ANTERO RESOURCES CORPORATION	Well	Orner Unit 1H
Field	Wetzel	API	47-103-03428-0000
Facility	Dogwood Pad	Wellbore	Orner Unit 1H AWB
Slot	Slot #01		

WELLPATH DATA (261 stations)

MD [ft]	Inclination [°]	Azimuth [°]	TVD [ft]	Vert Sect [ft]	North [ft]	East [ft]	Grid East [US ft]	Grid North [US ft]	Latitude	Longitude	Closure Dist [ft]	Closure Dir [°]	DLS [°/100ft]	Build Rate [°/100ft]	Turn Rate [°/100ft]	Comments
19047.00	89.260	158.230	7183.32	11643.96	-12044.27	797.84	1718874.05	14341700.42	39°29'36.2107"N	80°43'18.8320"W	12070.67	176.210	1.63	-0.33	-1.60	
19141.00	89.570	160.300	7184.28	11737.91	-12132.17	831.12	1718907.31	14341612.55	39°29'35.3409"N	80°43'18.4110"W	12160.61	176.081	2.23	0.33	2.20	
19236.00	90.030	162.190	7184.61	11832.90	-12222.13	861.66	1718937.84	14341522.63	39°29'34.4510"N	80°43'18.0249"W	12252.46	175.967	2.05	0.48	1.99	
19330.00	90.180	160.090	7184.43	11926.90	-12311.07	892.05	1718968.22	14341433.72	39°29'33.5709"N	80°43'17.6409"W	12343.35	175.856	2.24	0.16	-2.23	
19424.00	89.850	161.570	7184.41	12020.89	-12399.86	922.91	1718999.07	14341344.97	39°29'32.6925"N	80°43'17.2507"W	12434.16	175.743	1.61	-0.35	1.57	
19519.00	89.200	161.630	7185.20	12115.88	-12490.00	952.90	1719029.04	14341254.87	39°29'31.8007"N	80°43'16.8718"W	12526.30	175.637	0.69	-0.68	0.06	
19613.00	90.680	162.230	7185.30	12209.87	-12579.36	982.06	1719058.19	14341165.54	39°29'30.9166"N	80°43'16.5034"W	12617.63	175.536	1.70	1.57	0.64	
19708.00	89.850	162.040	7184.86	12304.84	-12669.78	1011.20	1719087.32	14341075.16	39°29'30.0221"N	80°43'16.1352"W	12710.07	175.437	0.90	-0.87	-0.20	
19803.00	89.480	161.040	7185.41	12399.83	-12759.89	1041.28	1719117.39	14340985.09	39°29'29.1306"N	80°43'15.7551"W	12802.30	175.335	1.12	-0.39	-1.05	
19897.00	90.490	162.180	7185.44	12493.82	-12849.08	1070.93	1719147.03	14340895.92	39°29'28.2481"N	80°43'15.3804"W	12893.63	175.236	1.62	1.07	1.21	
19992.00	89.510	161.010	7185.44	12588.82	-12939.22	1100.93	1719177.01	14340805.82	39°29'27.3564"N	80°43'15.0014"W	12985.97	175.137	1.61	-1.03	-1.23	
20087.00	89.940	161.990	7185.89	12683.81	-13029.31	1131.07	1719207.14	14340715.77	39°29'26.4651"N	80°43'14.6205"W	13078.31	175.039	1.13	0.45	1.03	
20181.00	89.480	160.990	7186.37	12777.80	-13118.44	1160.91	1719236.97	14340626.67	39°29'25.5832"N	80°43'14.2434"W	13169.71	174.943	1.17	-0.49	-1.06	
20276.00	89.290	161.000	7187.39	12872.80	-13208.26	1191.85	1719267.90	14340536.89	39°29'24.6946"N	80°43'13.8523"W	13261.92	174.844	0.20	-0.20	0.01	
20370.00	89.540	161.690	7188.35	12966.79	-13297.32	1221.91	1719297.95	14340447.87	39°29'23.8135"N	80°43'13.4724"W	13353.34	174.750	0.78	0.27	0.73	
20464.00	89.970	162.440	7188.75	13060.77	-13386.75	1250.86	1719326.88	14340358.47	39°29'22.9287"N	80°43'13.1067"W	13445.06	174.662	0.92	0.46	0.80	
20559.00	90.000	161.410	7188.78	13155.75	-13477.06	1280.33	1719356.35	14340268.20	39°29'22.0352"N	80°43'12.7344"W	13537.74	174.573	1.08	0.03	-1.08	
20654.00	89.720	161.330	7189.01	13250.75	-13567.08	1310.68	1719386.68	14340178.21	39°29'21.1446"N	80°43'12.3509"W	13630.24	174.482	0.31	-0.29	-0.08	
20749.00	89.350	161.320	7189.78	13345.74	-13657.07	1341.10	1719417.09	14340088.25	39°29'20.2542"N	80°43'11.9664"W	13722.76	174.392	0.39	-0.39	-0.01	
20843.00	89.880	162.250	7190.41	13439.73	-13746.36	1370.48	1719446.46	14339999.00	39°29'19.3709"N	80°43'11.5952"W	13814.51	174.307	1.14	0.56	0.99	
20938.00	91.320	162.140	7189.42	13534.70	-13836.80	1399.53	1719475.49	14339908.59	39°29'18.4761"N	80°43'11.2283"W	13907.40	174.224	1.52	1.52	-0.12	
21032.00	89.570	161.460	7188.68	13628.68	-13926.09	1428.88	1719504.84	14339819.34	39°29'17.5927"N	80°43'10.8574"W	13999.21	174.142	2.00	-1.86	-0.72	
21127.00	89.380	161.030	7189.56	13723.67	-14016.05	1459.43	1719535.37	14339729.42	39°29'16.7027"N	80°43'10.4715"W	14091.82	174.055	0.49	-0.20	-0.45	
21222.00	89.380	160.930	7190.58	13818.67	-14105.85	1490.39	1719566.32	14339639.65	39°29'15.8142"N	80°43'10.0802"W	14184.37	173.969	0.11	0.00	-0.11	
21317.00	89.450	161.620	7191.55	13913.66	-14195.82	1520.88	1719596.80	14339549.72	39°29'14.9241"N	80°43'9.6948"W	14277.06	173.885	0.73	0.07	0.73	
21412.00	89.420	161.240	7192.49	14008.65	-14285.87	1551.13	1719627.04	14339459.71	39°29'14.0332"N	80°43'9.3125"W	14369.83	173.803	0.40	-0.03	-0.40	
21507.00	89.480	161.480	7193.40	14103.65	-14375.88	1581.50	1719657.39	14339369.73	39°29'13.1426"N	80°43'8.9288"W	14462.61	173.722	0.26	0.06	0.25	
21601.00	89.480	160.920	7194.26	14197.64	-14464.86	1611.79	1719687.67	14339280.78	39°29'12.2622"N	80°43'8.5460"W	14554.38	173.642	0.60	0.00	-0.60	
21696.00	89.450	161.080	7195.14	14292.64	-14554.68	1642.72	1719718.59	14339191.00	39°29'11.3736"N	80°43'8.1551"W	14647.09	173.561	0.17	-0.03	0.17	
21791.00	89.690	161.550	7195.86	14387.63	-14644.67	1673.15	1719749.01	14339101.04	39°29'10.4832"N	80°43'7.7706"W	14739.94	173.482	0.56	0.25	0.49	



Actual Wellpath Report

Orner Unit 1H AWP Proj: 23718'

Page 10 of 13



REFERENCE WELLPATH IDENTIFICATION			
Operator	ANTERO RESOURCES CORPORATION	Well	Orner Unit 1H
Field	Wetzel	API	47-103-03428-0000
Facility	Dogwood Pad	Wellbore	Orner Unit 1H AWB
Slot	Slot #01		

WELLPATH DATA (261 stations) † = interpolated, ‡ = extrapolated station																	
MD [ft]	Inclination [°]	Azimuth [°]	TVD [ft]	Vert Sect [ft]	North [ft]	East [ft]	Grid East [US ft]	Grid North [US ft]	Latitude	Longitude	Closure Dist [ft]	Closure Dir [°]	DLS ["/100ft]	Build Rate ["/100ft]	Turn Rate ["/100ft]	Comments	
21886.00	89.660	161.480	7196.39	14482.63	-14734.77	1703.27	1719779.12	14339010.98	39°29'9.5918"N	80°43'7.3900"W	14832.89	173.406	0.08	-0.03	-0.07		
21981.00	89.380	161.470	7197.19	14577.62	-14824.84	1733.45	1719809.29	14338920.94	39°29'8.7007"N	80°43'7.0086"W	14925.85	173.331	0.29	-0.29	-0.01		
22075.00	89.600	160.950	7198.03	14671.61	-14913.83	1763.73	1719839.55	14338831.99	39°29'7.8202"N	80°43'6.6260"W	15017.76	173.255	0.60	0.23	-0.55		
22170.00	89.510	161.520	7198.76	14766.61	-15003.78	1794.29	1719870.10	14338742.08	39°29'6.9303"N	80°43'6.2399"W	15110.69	173.180	0.61	-0.09	0.60		
22264.00	89.720	161.120	7199.40	14860.60	-15092.82	1824.39	1719900.19	14338653.07	39°29'6.0493"N	80°43'5.8594"W	15202.69	173.108	0.48	0.22	-0.43		
22359.00	89.420	161.190	7200.11	14955.60	-15182.73	1855.08	1719930.86	14338563.20	39°29'5.1598"N	80°43'5.4717"W	15295.64	173.034	0.32	-0.32	0.07		
22454.00	89.350	161.790	7201.13	15050.59	-15272.81	1885.24	1719961.01	14338473.16	39°29'4.2686"N	80°43'5.0906"W	15388.72	172.963	0.64	-0.07	0.63		
22548.00	89.540	161.840	7202.04	15144.57	-15362.11	1914.57	1719990.33	14338383.89	39°29'3.3851"N	80°43'4.7201"W	15480.96	172.896	0.21	0.20	0.05		
22643.00	89.420	160.780	7202.90	15239.57	-15452.10	1945.01	1720020.76	14338293.94	39°29'2.4948"N	80°43'4.3354"W	15574.03	172.826	1.12	-0.13	-1.12		
22738.00	89.690	161.720	7203.64	15334.56	-15542.05	1975.55	1720051.29	14338204.02	39°29'1.6048"N	80°43'3.9496"W	15667.10	172.756	1.03	0.28	0.99		
22832.00	89.880	161.630	7203.99	15428.55	-15631.28	2005.10	1720080.83	14338114.82	39°29'0.7220"N	80°43'3.5762"W	15759.36	172.690	0.22	0.20	-0.10		
22927.00	89.600	161.160	7204.42	15523.55	-15721.32	2035.41	1720111.12	14338024.83	39°28'59.8312"N	80°43'3.1933"W	15852.53	172.623	0.58	-0.29	-0.49		
23022.00	89.380	161.300	7205.27	15618.54	-15811.26	2065.98	1720141.68	14337934.92	39°28'58.9413"N	80°43'2.8070"W	15945.66	172.556	0.27	-0.23	0.15		
23116.00	89.820	159.610	7205.93	15712.53	-15899.84	2097.42	1720173.11	14337846.37	39°28'58.0649"N	80°43'2.4095"W	16037.58	172.485	1.86	0.47	-1.80		
23211.00	89.660	159.440	7206.36	15807.50	-15988.84	2130.65	1720206.33	14337757.41	39°28'57.1843"N	80°43'1.9893"W	16130.18	172.410	0.25	-0.17	-0.18		
23306.00	89.480	159.270	7207.07	15902.46	-16077.73	2164.15	1720239.81	14337668.55	39°28'56.3046"N	80°43'1.5657"W	16222.73	172.334	0.26	-0.19	-0.18		
23400.00	89.690	159.470	7207.75	15996.43	-16165.70	2197.26	1720272.92	14337580.61	39°28'55.4342"N	80°43'1.1468"W	16314.35	172.260	0.31	0.22	0.21		
23495.00	89.480	159.510	7208.44	16091.39	-16254.68	2230.55	1720306.19	14337491.67	39°28'54.5537"N	80°43'0.7259"W	16407.01	172.186	0.23	-0.22	0.04		
23589.00	89.320	159.040	7209.42	16185.35	-16342.59	2263.81	1720339.44	14337403.80	39°28'53.6839"N	80°43'0.3052"W	16498.64	172.113	0.53	-0.17	-0.50		
23684.00	89.420	159.240	7210.47	16280.30	-16431.36	2297.64	1720373.25	14337315.06	39°28'52.8055"N	80°42'59.8774"W	16591.22	172.040	0.24	0.11	0.21		
23718.00‡	89.420	159.240	7210.81	16314.28	-16463.15	2309.69	1720385.30	14337283.29	39°28'52.4909"N	80°42'59.7250"W	16624.38	172.014	0.00	0.00	0.00	Projected MD at TD: 23718'	

RECEIVED
 Office of Oil and Gas
 FEB 07 2023
 WV Department of
 Environmental Protection



Actual Wellpath Report

Orner Unit 1H AWP Proj: 23718'

Page 11 of 13



REFERENCE WELLPATH IDENTIFICATION

Operator	ANTERO RESOURCES CORPORATION	Well	Orner Unit 1H
Field	Wetzel	API	47-103-03428-0000
Facility	Dogwood Pad	Wellbore	Orner Unit 1H AWB
Slot	Slot #01		

HOLE & CASING SECTIONS - Ref Wellbore: Orner Unit 1H AWB Ref Wellpath: Orner Unit 1H AWP Proj: 23718'

String/Diameter	Start MD [ft]	End MD [ft]	Interval [ft]	Start TVD [ft]	End TVD [ft]	Start N/S [ft]	Start E/W [ft]	End N/S [ft]	End E/W [ft]
20in Conductor	30.00	130.00	100.00	30.00	130.00	0.00	0.00	0.07	0.10
17.5in Open Hole	130.00	685.00	555.00	130.00	685.00	0.07	0.10	0.70	1.85
13.375in Casing Surface	30.00	665.00	635.00	30.00	665.00	0.00	0.00	0.70	1.86
12.25in Open Hole	685.00	2779.00	2094.00	685.00	2595.02	0.70	1.85	-302.27	-702.01
9.625in Casing Intermediate	30.00	2759.00	2729.00	30.00	2577.75	0.00	0.00	-296.88	-693.47
8.75in Open Hole	2779.00	7184.00	4405.00	2595.02	6433.36	-302.27	-702.01	-1184.00	-2665.81
8.5in Open Hole	7184.00	23718.00	16534.00	6433.36	7210.81	-1184.00	-2665.81	-16463.15	2309.69
5.5in Casing Production	30.00	23698.00	23668.00	30.00	7210.61	0.00	0.00	-16444.45	2302.60



Actual Wellpath Report

Orner Unit 1H AWP Proj: 23718'

Page 12 of 13



REFERENCE WELLPATH IDENTIFICATION			
Operator	ANTERO RESOURCES CORPORATION	Well	Orner Unit 1H
Field	Wetzel	API	47-103-03428-0000
Facility	Dogwood Pad	Wellbore	Orner Unit 1H AWB
Slot	Slot #01		

TARGETS								
Name	TVD [ft]	North [ft]	East [ft]	Grid East [US ft]	Grid North [US ft]	Latitude	Longitude	Shape
Orner Unit 1H POE Rev-2	7098.00	-1763.66	-2768.81	1715308.81	14351976.97	39°31'17.9235"N	80°44'3.9397"W	point
Orner Unit 1H POE Rev-1	7108.00	-1537.28	-2847.07	1715230.57	14352203.26	39°31'20.1632"N	80°44'4.9299"W	point
Orner Unit 1H BHL Rev-2	7124.00	-16484.88	2320.82	1720396.42	14337261.56	39°28'52.2757"N	80°42'59.5839"W	point
Orner Unit 1H LP Rev-2	7124.00	-1944.39	-2706.32	1715371.26	14351796.31	39°31'16.1355"N	80°44'3.1492"W	point
Orner Unit 1H 50' L/R Hard Line Rev-2	7500.00	-9124.27	-223.99	1717852.61	14344619.26	39°30'5.1010"N	80°43'31.7525"W	rectangle
2D Rectangle 15576.2 x 100.								

WELLPATH COMPOSITION - Ref Wellbore: Orner Unit 1H AWB Ref Wellpath: Orner Unit 1H AWP Proj: 23718'						
Start MD [ft]	End MD [ft]	Positional Uncertainty Model	Log Name/Comment	Wellbore	Survey Date	
30.00	572.00	Gyrodata 2015 - GC+WIR+DPIPE	01 Gyrodata MS Gyro <17-1/2"> (100'-572')	Orner Unit 1H AWB	20/Oct/2021	
572.00	933.00	Gyrodata 2015 - GC+WIR+DPIPE	02 Gyrodata MS Gyro <12-1/4"> (572')(632'-933')	Orner Unit 1H AWB	05/Nov/2021	
933.00	2714.00	BH NaviTrak (2019) (Axial Corr+HRGM)	03 APS EM <12-1/4"> (933')(1159'-2714')	Orner Unit 1H AWB	20/Oct/2021	
2714.00	7120.00	BH NaviTrak (2019) (Axial Corr+HRGM)	04 APS EM <8-3/4"> (2714')(2854'-7120')	Orner Unit 1H AWB	03/Nov/2021	
7120.00	23718.00	BH AutoTrak Curve/eXpress (2019) (HRGM, Short spacing)	05 BH AT Curve <8-1/2"> (7120')(7215'-23684')	Orner Unit 1H AWB	03/Nov/2021	

RECEIVED
 Office of Oil and Gas
 WV Department of
 Environmental Protection
 FEB 07 2023



Actual Wellpath Report

Orner Unit 1H AWP Proj: 23718'

Page 13 of 13



REFERENCE WELLPATH IDENTIFICATION

Operator	ANTERO RESOURCES CORPORATION	Well	Orner Unit 1H
Field	Wetzel	API	47-103-03428-0000
Facility	Dogwood Pad	Wellbore	Orner Unit 1H AWB
Slot	Slot #01		

COMMENTS

Wellpath general comments

API: 47-103-03428-0000

BH Job #: 111092546

Rig: H&P 519

Duration: 11/5/2021-11/15/2021

Gyrodata MS Gyro <17-1/2"> (100'-572')

Gyrodata MS Gyro <12-1/4"> (572')(632'-933')

APS EM <12-1/4"> (933')(1159'-2714')

APS EM <8-3/4"> (2714')(2854'-7120')

BH AT Curve <8-1/2"> (7120')(7215'-23684')

Sycamore: 7581' MD

Middlesex: 7751' MD

Burkett: 7922' MD

Tully: 7996' MD

Hamilton: 8126' MD

Marcellus POE: 8260' MD

Projected MD at TD: 23718'