



ANTERO RESOURCES CORPORATION



Location: Wetzel County, WV
Field: Wetzel
Facility: Gadd Pad

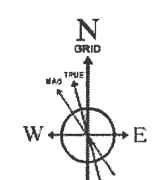
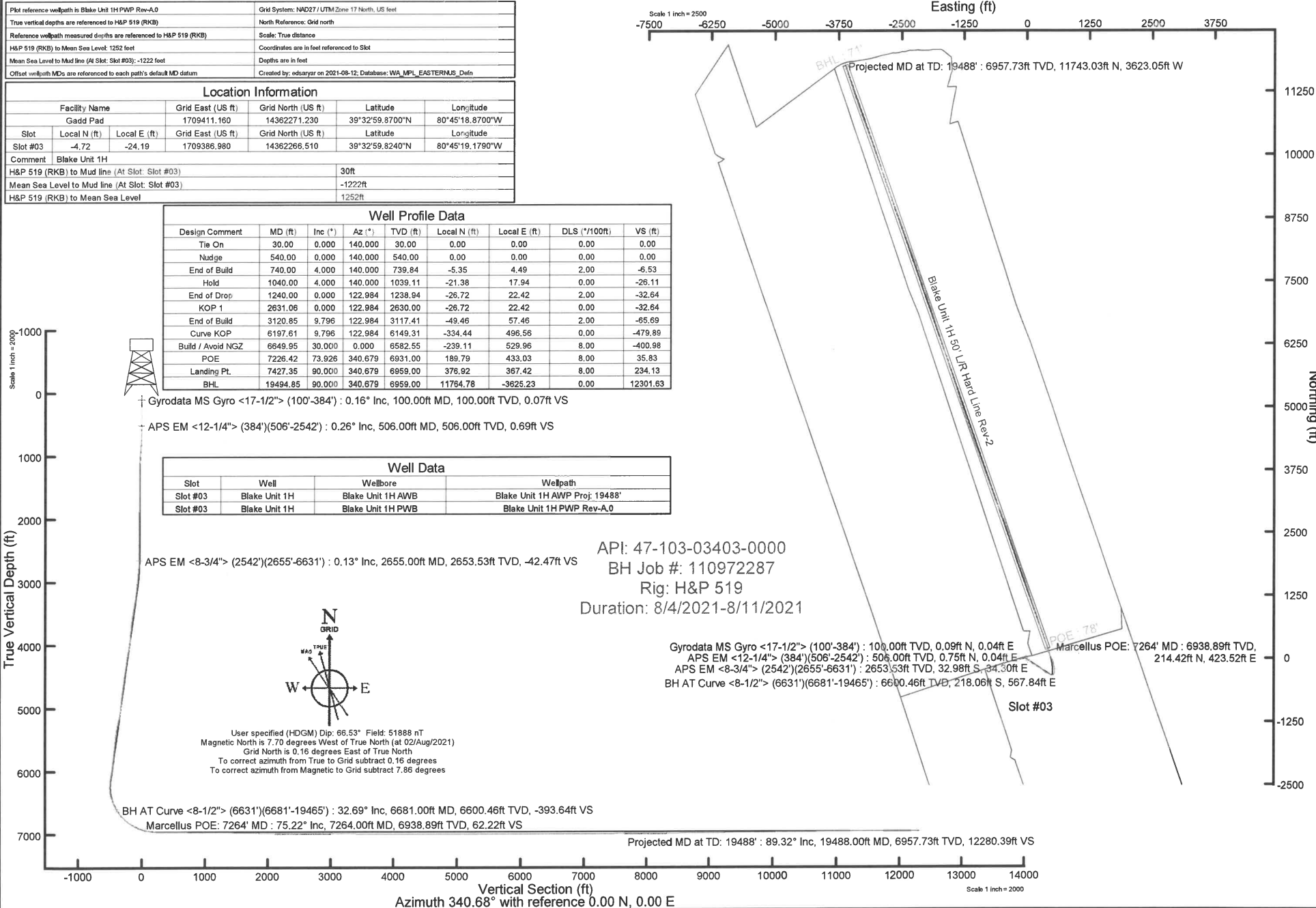
Slot: Slot #03
Well: Blake Unit 1H
Wellbore: Blake Unit 1H PWB

Plot reference wellpath is Blake Unit 1H PWP Rev-A.0	Grid System: NAD27 / UTM Zone 17 North, US feet
True vertical depths are referenced to H&P 519 (RKB)	North Reference: Grid north
Reference wellpath measured depths are referenced to H&P 519 (RKB)	Scale: True distance
H&P 519 (RKB) to Mean Sea Level: 1252 feet	Coordinates are in feet referenced to Slot
Mean Sea Level to Mud line (At Slot: Slot #03): -1222 feet	Depths are in feet
Offset wellpath MDs are referenced to each path's default MD datum	Created by: edsanyar on 2021-08-12; Database: WA_MPL_EASTERNUS_Defn

Location Information				
Facility Name	Grid East (US ft)	Grid North (US ft)	Latitude	Longitude
Gadd Pad	1709411.160	14362271.230	39°32'59.8700"N	80°45'18.8700"W
Slot	Local N (ft)	Local E (ft)	Grid East (US ft)	Grid North (US ft)
Slot #03	-4.72	-24.19	1709386.980	14362266.510
			39°32'59.8240"N	80°45'19.1790"W
Comment	Blake Unit 1H			
H&P 519 (RKB) to Mud line (At Slot: Slot #03)	30ft			
Mean Sea Level to Mud line (At Slot: Slot #03)	-1222ft			
H&P 519 (RKB) to Mean Sea Level	1252ft			

Well Profile Data								
Design Comment	MD (ft)	Inc (°)	Az (°)	TVD (ft)	Local N (ft)	Local E (ft)	DLS (*/100ft)	VS (ft)
Tie On	30.00	0.000	140.000	30.00	0.00	0.00	0.00	0.00
Nudge	540.00	0.000	140.000	540.00	0.00	0.00	0.00	0.00
End of Build	740.00	4.000	140.000	739.84	-5.35	4.49	2.00	-6.53
Hold	1040.00	4.000	140.000	1039.11	-21.38	17.94	0.00	-26.11
End of Drop	1240.00	0.000	122.984	1238.94	-26.72	22.42	2.00	-32.64
KOP 1	2631.06	0.000	122.984	2630.00	-26.72	22.42	0.00	-32.64
End of Build	3120.85	9.796	122.984	3117.41	-49.46	57.46	2.00	-65.69
Curve KOP	6197.61	9.796	122.984	6149.31	-334.44	496.56	0.00	-479.89
Build / Avoid NGZ	6649.95	30.000	0.000	6582.55	-239.11	529.96	8.00	-400.98
POE	7226.42	73.926	340.679	6931.00	189.79	433.03	8.00	35.83
Landing Pt.	7427.35	90.000	340.679	6959.00	376.92	367.42	8.00	234.13
BHL	19494.85	90.000	340.679	6959.00	11764.78	-3625.23	0.00	12301.63

Well Data			
Slot	Well	Wellbore	Wellpath
Slot #03	Blake Unit 1H	Blake Unit 1H AWB	Blake Unit 1H AWP Proj: 19488'
Slot #03	Blake Unit 1H	Blake Unit 1H PWB	Blake Unit 1H PWP Rev-A.0



User specified (HDGM) Dip: 66.53° Field: 51888 nT
 Magnetic North is 7.70 degrees West of True North (at 02/Aug/2021)
 Grid North is 0.16 degrees East of True North
 To correct azimuth from True to Grid subtract 0.16 degrees
 To correct azimuth from Magnetic to Grid subtract 7.86 degrees



Actual Wellpath Report

Blake Unit 1H AWP Proj: 19488'

Page 1 of 11



REFERENCE WELLPATH IDENTIFICATION			
Operator	ANTERO RESOURCES CORPORATION	Well	Blake Unit 1H
Field	Wetzel	API	47-103-03403-0000
Facility	Gadd Pad	Wellbore	Blake Unit 1H AWB
Slot	Slot #03		

REPORT SETUP INFORMATION			
Projection System	NAD27 / UTM Zone 17 North, US feet	Software System	WellArchitect® 6.0
North Reference	Grid	User	Edsaryar
Scale	0.999605	Report Generated	12/Aug/2021 at 15:13
Convergence at slot	0.16° East	Database	WA_MPL_EASTERNUS_Defn

WELLPATH LOCATION						
	Local coordinates		Grid coordinates		Geographic coordinates	
	North[ft]	East[ft]	Easting[US ft]	Northing[US ft]	Latitude	Longitude
Slot Location	-4.72	-24.19	1709386.98	14362266.51	39°32'59.8240"N	80°45'19.1790"W
Facility Reference Pt			1709411.16	14362271.23	39°32'59.8700"N	80°45'18.8700"W
Field Reference Pt			0.00	0.00	0°00'0.0000"	85°29'19.3013"W

WELLPATH DATUM			
Calculation method	Minimum curvature	H&P 519 (RKB) to Facility Vertical Datum	1252.00ft
Horizontal Reference Pt	Slot	H&P 519 (RKB) to Mean Sea Level	1252.00ft
Vertical Reference Pt	H&P 519 (RKB)	H&P 519 (RKB) to Mud Line at Slot (Slot #03)	30.00ft
MD Reference Pt	H&P 519 (RKB)	Section Origin	N 0.00, E 0.00 ft
Field Vertical Reference	Mean Sea Level	Section Azimuth	340.68°



Actual Wellpath Report

Blake Unit 1H AWP Proj: 19488'

Page 2 of 11



REFERENCE WELLPATH IDENTIFICATION			
Operator	ANTERO RESOURCES CORPORATION	Well	Blake Unit 1H
Field	Wetzel	API	47-103-03403-0000
Facility	Gadd Pad	Wellbore	Blake Unit 1H AWB
Slot	Slot #03		

WELLPATH DATA (213 stations) † = interpolated, ‡ = extrapolated station																
MD	Inclination	Azimuth	TVD	Vert Sect	North	East	Grid East	Grid North	Latitude	Longitude	Closure Dist	Closure Dir	DLS	Build Rate	Turn Rate	Comments
[ft]	[°]	[°]	[ft]	[ft]	[ft]	[ft]	[US ft]	[US ft]			[ft]	[°]	["/100ft]	["/100ft]	["/100ft]	
0.00†	0.000	25.840	0.00	0.00	0.00	0.00	1709386.98	14362266.51	39°32'59.8240"N	80°45'19.1790"W	0.00	0.000	0.00	0.00	0.00	
30.00	0.000	25.840	30.00	0.00	0.00	0.00	1709386.98	14362266.51	39°32'59.8240"N	80°45'19.1790"W	0.00	0.000	0.00	0.00	0.00	
100.00	0.160	25.840	100.00	0.07	0.09	0.04	1709387.02	14362266.60	39°32'59.8248"N	80°45'19.1784"W	0.10	25.840	0.23	0.23	0.00	Gyrodata MS Gyro <17-1/2"> (100'-384')
200.00	0.180	22.430	200.00	0.28	0.36	0.16	1709387.14	14362266.87	39°32'59.8275"N	80°45'19.1769"W	0.39	24.482	0.02	0.02	-3.41	
300.00	0.070	20.850	300.00	0.45	0.56	0.25	1709387.22	14362267.07	39°32'59.8295"N	80°45'19.1758"W	0.61	23.594	0.11	-0.11	-1.58	
384.00	0.060	26.010	384.00	0.52	0.65	0.28	1709387.26	14362267.16	39°32'59.8304"N	80°45'19.1753"W	0.71	23.545	0.01	-0.01	6.14	
506.00	0.260	278.530	506.00	0.69	0.75	0.04	1709387.02	14362267.26	39°32'59.8314"N	80°45'19.1785"W	0.75	2.827	0.23	0.16	-88.10	APS EM <12-1/4"> (384')(506'-2542')
596.00	1.270	153.990	595.99	-0.20	-0.12	0.27	1709387.25	14362266.39	39°32'59.8228"N	80°45'19.1755"W	0.30	113.614	1.59	1.12	-138.38	
687.00	3.670	142.850	686.90	-3.98	-3.35	2.47	1709389.45	14362263.16	39°32'59.7908"N	80°45'19.1475"W	4.16	143.534	2.68	2.64	-12.24	
868.00	4.770	140.370	867.41	-16.55	-13.76	10.77	1709397.75	14362252.75	39°32'59.6877"N	80°45'19.0419"W	17.48	141.945	0.62	0.61	-1.37	
959.00	4.790	144.560	958.09	-23.75	-19.77	15.39	1709402.36	14362246.75	39°32'59.6282"N	80°45'18.9832"W	25.05	142.104	0.38	0.02	4.60	
1049.00	3.810	152.130	1047.84	-30.32	-25.48	18.97	1709405.94	14362241.04	39°32'59.5717"N	80°45'18.9377"W	31.76	143.334	1.26	-1.09	8.41	
1144.00	2.190	165.750	1142.71	-35.25	-30.03	20.89	1709407.86	14362236.50	39°32'59.5267"N	80°45'18.9134"W	36.58	145.174	1.85	-1.71	14.34	
1238.00	1.190	170.960	1236.66	-37.99	-32.73	21.48	1709408.45	14362233.79	39°32'59.4999"N	80°45'18.9058"W	39.15	146.720	1.08	-1.06	5.54	
1333.00	0.710	53.990	1331.66	-38.80	-33.36	22.11	1709409.09	14362233.16	39°32'59.4937"N	80°45'18.8978"W	40.02	146.458	1.73	-0.51	-123.13	
1427.00	1.180	44.690	1425.64	-38.20	-32.33	23.27	1709410.24	14362234.20	39°32'59.5039"N	80°45'18.8831"W	39.83	144.257	0.52	0.50	-9.89	
1522.00	1.210	45.200	1520.62	-37.34	-30.93	24.67	1709411.64	14362235.60	39°32'59.5177"N	80°45'18.8652"W	39.56	141.424	0.03	0.03	0.54	
1617.00	1.020	50.780	1615.60	-36.63	-29.68	26.03	1709413.00	14362236.84	39°32'59.5299"N	80°45'18.8477"W	39.48	138.749	0.23	-0.20	5.87	
1711.00	1.170	123.630	1709.59	-37.11	-29.69	27.48	1709414.45	14362236.84	39°32'59.5298"N	80°45'18.8292"W	40.45	137.210	1.39	0.16	77.50	
1806.00	1.320	124.050	1804.57	-38.76	-30.84	29.19	1709416.16	14362235.69	39°32'59.5184"N	80°45'18.8073"W	42.46	136.567	0.16	0.16	0.44	
1900.00	1.310	128.490	1898.54	-40.54	-32.11	30.93	1709417.90	14362234.41	39°32'59.5058"N	80°45'18.7852"W	44.59	136.071	0.11	-0.01	4.72	
1995.00	0.500	96.190	1993.53	-41.63	-32.83	32.19	1709419.16	14362233.69	39°32'59.4986"N	80°45'18.7691"W	45.98	135.562	0.98	-0.85	-34.00	
2089.00	0.240	87.610	2087.53	-41.87	-32.87	32.80	1709419.77	14362233.66	39°32'59.4983"N	80°45'18.7614"W	46.43	135.060	0.28	-0.28	-9.13	
2184.00	0.170	102.370	2182.53	-42.00	-32.89	33.14	1709420.10	14362233.63	39°32'59.4980"N	80°45'18.7571"W	46.69	134.787	0.09	-0.07	15.54	
2278.00	0.130	98.180	2276.53	-42.12	-32.93	33.38	1709420.34	14362233.59	39°32'59.4976"N	80°45'18.7540"W	46.89	134.618	0.04	-0.04	-4.46	
2373.00	0.220	101.940	2371.53	-42.27	-32.99	33.66	1709420.63	14362233.54	39°32'59.4970"N	80°45'18.7504"W	47.13	134.420	0.10	0.09	3.96	
2468.00	0.150	76.790	2466.53	-42.38	-33.00	33.96	1709420.93	14362233.53	39°32'59.4969"N	80°45'18.7466"W	47.35	134.175	0.11	-0.07	-26.47	
2542.00	0.070	85.750	2540.53	-42.40	-32.97	34.10	1709421.07	14362233.55	39°32'59.4972"N	80°45'18.7448"W	47.43	134.035	0.11	-0.11	12.11	
2655.00	0.130	94.010	2653.53	-42.47	-32.98	34.30	1709421.26	14362233.55	39°32'59.4972"N	80°45'18.7423"W	47.58	133.874	0.05	0.05	7.31	APS EM <8-3/4"> (2542')(2655'-6631')
2750.00	2.750	136.590	2748.49	-44.59	-34.64	35.97	1709422.94	14362231.88	39°32'59.4807"N	80°45'18.7210"W	49.94	133.919	2.80	2.76	44.82	



Actual Wellpath Report

Blake Unit 1H AWP Proj: 19488'
Page 3 of 11



REFERENCE WELLPATH IDENTIFICATION			
Operator	ANTERO RESOURCES CORPORATION	Well	Blake Unit 1H
Field	Wetzel	API	47-103-03403-0000
Facility	Gadd Pad	Wellbore	Blake Unit 1H AWB
Slot	Slot #03		

WELLPATH DATA (213 stations)																
MD	Inclination	Azimuth	TVD	Vert Sect	North	East	Grid East	Grid North	Latitude	Longitude	Closure Dist	Closure Dir	DLS	Build Rate	Turn Rate	Comments
[ft]	[°]	[°]	[ft]	[ft]	[ft]	[ft]	[US ft]	[US ft]			[ft]	[°]	[°/100ft]	[°/100ft]	[°/100ft]	
2845.00	5.980	134.530	2843.20	-51.11	-39.77	41.07	1709428.03	14362226.76	39°32'59.4299"N	80°45'18.6561"W	57.17	134.078	3.40	3.40	-2.17	
2940.00	5.990	130.840	2937.68	-59.86	-46.48	48.35	1709435.31	14362220.05	39°32'59.3633"N	80°45'18.5634"W	67.06	133.872	0.41	0.01	-3.88	
3036.00	7.340	124.990	3033.03	-69.18	-53.27	57.16	1709444.12	14362213.26	39°32'59.2960"N	80°45'18.4511"W	78.13	132.983	1.57	1.41	-6.09	
3131.00	7.460	120.150	3127.24	-78.80	-59.85	67.46	1709454.42	14362206.69	39°32'59.2307"N	80°45'18.3198"W	90.18	131.577	0.67	0.13	-5.09	
3226.00	8.230	130.940	3221.36	-89.39	-67.40	77.93	1709464.88	14362199.13	39°32'59.1557"N	80°45'18.1864"W	103.04	130.855	1.75	0.81	11.36	
3318.00	10.490	135.540	3312.13	-102.69	-77.70	88.78	1709475.72	14362188.85	39°32'59.0537"N	80°45'18.0484"W	117.97	131.192	2.59	2.46	5.00	
3413.00	10.070	130.090	3405.61	-117.67	-89.22	101.19	1709488.13	14362177.33	39°32'58.9395"N	80°45'17.8903"W	134.90	131.403	1.11	-0.44	-5.74	
3507.00	9.920	127.000	3498.18	-131.48	-99.38	113.94	1709500.87	14362167.17	39°32'58.8387"N	80°45'17.7279"W	151.19	131.096	0.59	-0.16	-3.29	
3602.00	9.900	122.630	3591.76	-144.72	-108.71	127.35	1709514.28	14362157.84	39°32'58.7461"N	80°45'17.5570"W	167.44	130.485	0.79	-0.02	-4.60	
3696.00	9.260	119.320	3684.45	-156.76	-116.77	140.75	1709527.68	14362149.78	39°32'58.6661"N	80°45'17.3862"W	182.89	129.680	0.90	-0.68	-3.52	
3791.00	8.460	116.460	3778.32	-167.51	-123.63	153.67	1709540.59	14362142.93	39°32'58.5980"N	80°45'17.2215"W	197.23	128.816	0.96	-0.84	-3.01	
3886.00	8.220	111.250	3872.32	-176.93	-129.20	166.26	1709553.17	14362137.36	39°32'58.5426"N	80°45'17.0610"W	210.56	127.851	0.83	-0.25	-5.48	
3980.00	8.470	120.650	3965.33	-186.60	-135.17	178.48	1709565.39	14362131.40	39°32'58.4833"N	80°45'16.9052"W	223.89	127.138	1.47	0.27	10.00	
4075.00	9.830	129.960	4059.12	-198.93	-143.94	190.71	1709577.62	14362122.62	39°32'58.3962"N	80°45'16.7493"W	238.94	127.044	2.11	1.43	9.80	
4169.00	11.670	131.230	4151.47	-214.11	-155.36	204.02	1709590.92	14362111.21	39°32'58.2830"N	80°45'16.5799"W	256.44	127.290	1.97	1.96	1.35	
4266.00	10.670	125.270	4246.63	-229.98	-167.02	218.73	1709605.62	14362099.56	39°32'58.1674"N	80°45'16.3926"W	275.20	127.365	1.57	-1.03	-6.14	
4361.00	9.990	120.420	4340.09	-243.43	-176.27	233.01	1709619.90	14362090.31	39°32'58.0756"N	80°45'16.2105"W	292.17	127.106	1.16	-0.72	-5.11	
4455.00	10.910	120.960	4432.53	-256.50	-184.97	247.67	1709634.55	14362081.61	39°32'57.9892"N	80°45'16.0237"W	309.12	126.754	0.98	0.98	0.57	
4550.00	9.950	115.420	4525.96	-269.19	-193.12	262.80	1709649.67	14362073.47	39°32'57.9083"N	80°45'15.8309"W	326.12	126.311	1.46	-1.01	-5.83	
4644.00	10.320	121.200	4618.50	-281.40	-200.97	277.33	1709664.20	14362065.62	39°32'57.8303"N	80°45'15.6456"W	342.49	125.929	1.15	0.39	6.15	
4739.00	10.280	117.540	4711.97	-294.16	-209.30	292.13	1709678.99	14362057.30	39°32'57.7476"N	80°45'15.4570"W	359.37	125.620	0.69	-0.04	-3.85	
4833.00	9.670	109.550	4804.55	-305.23	-215.82	307.01	1709693.86	14362050.78	39°32'57.6827"N	80°45'15.2673"W	375.27	125.106	1.61	-0.65	-8.50	
4928.00	8.820	112.110	4898.32	-315.06	-221.23	321.27	1709708.12	14362045.37	39°32'57.6289"N	80°45'15.0854"W	390.07	124.551	0.99	-0.89	2.69	
5022.00	8.540	127.830	4991.25	-325.69	-228.22	333.46	1709720.31	14362038.38	39°32'57.5594"N	80°45'14.9300"W	404.08	124.388	2.53	-0.30	16.72	
5117.00	9.960	142.510	5085.03	-339.43	-239.07	344.04	1709730.88	14362027.54	39°32'57.4519"N	80°45'14.7954"W	418.95	124.795	2.89	1.49	15.45	
5212.00	12.430	144.470	5178.22	-357.05	-253.91	354.98	1709741.82	14362012.70	39°32'57.3050"N	80°45'14.6562"W	436.44	125.575	2.63	2.60	2.06	
5307.00	12.740	134.910	5270.94	-376.31	-269.63	368.34	1709755.18	14361996.99	39°32'57.1493"N	80°45'14.4862"W	456.48	126.204	2.21	0.33	-10.06	
5401.00	12.500	124.650	5362.68	-393.87	-282.73	384.05	1709770.88	14361983.89	39°32'57.0193"N	80°45'14.2861"W	476.90	126.360	2.40	-0.26	-10.91	
5496.00	9.960	109.520	5455.88	-407.34	-291.32	400.26	1709787.08	14361975.30	39°32'56.9340"N	80°45'14.0795"W	495.05	126.049	4.07	-2.67	-15.93	
5591.00	8.800	101.040	5549.61	-416.17	-295.46	415.14	1709801.95	14361971.17	39°32'56.8927"N	80°45'13.8897"W	509.55	125.440	1.90	-1.22	-8.93	



Actual Wellpath Report

Blake Unit 1H AWP Proj: 19488'

Page 4 of 11



REFERENCE WELLPATH IDENTIFICATION			
Operator	ANTERO RESOURCES CORPORATION	Well	Blake Unit 1H
Field	Wetzel	API	47-103-03403-0000
Facility	Gadd Pad	Wellbore	Blake Unit 1H AWB
Slot	Slot #03		

WELLPATH DATA (213 stations) † = interpolated, ‡ = extrapolated station																
MD (ft)	Inclination (°)	Azimuth (°)	TVD (ft)	Vert Sect (ft)	North (ft)	East (ft)	Grid East (US ft)	Grid North (US ft)	Latitude	Longitude	Closure Dist (ft)	Closure Dir (°)	DLS (°/100ft)	Build Rate (°/100ft)	Turn Rate (°/100ft)	Comments
5685.00	8.820	109.940	5642.51	-424.36	-299.30	428.97	1709815.78	14361967.33	39°32'56.8544"N	80°45'13.7133"W	523.06	124.904	1.45	0.02	9.47	
5780.00	8.670	120.860	5736.41	-434.47	-305.45	441.96	1709828.77	14361961.18	39°32'56.7932"N	80°45'13.5476"W	537.25	124.649	1.75	-0.16	11.49	
5874.00	8.210	117.330	5829.39	-444.80	-312.17	454.01	1709840.81	14361954.46	39°32'56.7265"N	80°45'13.3941"W	550.97	124.512	0.74	-0.49	-3.76	
5969.00	8.900	122.600	5923.33	-455.51	-319.24	466.23	1709853.02	14361947.39	39°32'56.6563"N	80°45'13.2384"W	565.05	124.401	1.10	0.73	5.55	
6064.00	10.510	123.370	6016.97	-468.19	-327.97	479.65	1709866.44	14361938.67	39°32'56.5697"N	80°45'13.0673"W	581.06	124.363	1.70	1.69	0.81	
6158.00	11.680	118.460	6109.21	-482.06	-337.22	495.18	1709881.96	14361929.42	39°32'56.4778"N	80°45'12.8694"W	599.10	124.255	1.60	1.24	-5.22	
6253.00	13.740	89.250	6201.98	-492.78	-341.66	514.94	1709901.71	14361924.99	39°32'56.4334"N	80°45'12.6173"W	617.97	123.564	7.02	2.17	-30.75	
6347.00	15.860	57.130	6293.00	-493.33	-334.53	536.93	1709923.69	14361932.11	39°32'56.5033"N	80°45'12.3364"W	632.61	121.925	8.89	2.26	-34.17	
6442.00	18.290	33.230	6383.92	-481.21	-314.99	556.02	1709942.78	14361951.65	39°32'56.6959"N	80°45'12.0919"W	639.05	119.532	7.75	2.56	-25.16	
6536.00	22.310	10.380	6472.20	-456.69	-285.04	567.34	1709954.10	14361981.58	39°32'56.9915"N	80°45'11.9463"W	634.92	116.676	9.38	4.28	-24.31	
6631.00	29.530	357.420	6557.66	-418.53	-243.83	569.54	1709956.30	14362022.78	39°32'57.3988"N	80°45'11.9168"W	619.54	113.176	9.62	7.60	-13.64	
6681.00	32.690	355.130	6600.46	-393.64	-218.06	567.84	1709954.60	14362048.54	39°32'57.6535"N	80°45'11.9376"W	608.27	111.007	6.75	6.32	-4.58	BH AT Curve <8-1/2"> (6631')(6681'-19465')
6687.00†	33.049	354.827	6605.50	-390.49	-214.81	567.56	1709954.31	14362051.78	39°32'57.6856"N	80°45'11.9411"W	606.85	110.731	6.58	5.99	-5.06	Sycamore: 6687' MD
6740.00	36.250	352.380	6649.10	-361.12	-184.88	564.17	1709950.93	14362081.70	39°32'57.9815"N	80°45'11.9833"W	593.70	108.144	6.58	6.04	-4.62	
6835.00	45.170	345.780	6721.07	-299.91	-124.24	552.15	1709938.91	14362142.32	39°32'58.5812"N	80°45'12.1347"W	565.95	102.681	10.41	9.39	-6.95	
6850.00†	45.699	344.424	6731.60	-289.26	-113.91	549.40	1709936.16	14362152.65	39°32'58.6834"N	80°45'12.1694"W	561.08	101.713	7.34	3.52	-9.04	Middlesex: 6850' MD
6930.00	48.770	337.600	6785.95	-230.60	-58.47	530.23	1709917.00	14362208.06	39°32'59.2318"N	80°45'12.4122"W	533.44	96.293	7.34	3.84	-8.53	
7004.00†	54.066	336.092	6832.08	-172.91	-5.32	507.47	1709894.25	14362261.20	39°32'59.7577"N	80°45'12.7009"W	507.50	90.600	7.33	7.16	-2.04	Burkett: 7004' MD
7024.00	55.500	335.720	6843.61	-156.63	9.60	500.80	1709887.58	14362276.10	39°32'59.9053"N	80°45'12.7855"W	500.89	88.902	7.33	7.17	-1.86	
7058.00†	58.982	337.247	6862.01	-128.12	35.81	489.40	1709876.18	14362302.31	39°33'0.1647"N	80°45'12.9301"W	490.71	85.815	10.92	10.24	4.49	Tully: 7058' MD
7119.00	65.270	339.730	6890.52	-74.27	85.96	469.67	1709856.46	14362352.44	39°33'0.6609"N	80°45'13.1802"W	477.47	79.628	10.92	10.31	4.07	
7214.00	72.270	340.510	6924.90	14.23	169.19	439.59	1709826.39	14362435.63	39°33'1.4843"N	80°45'13.5613"W	471.02	68.949	7.41	7.37	0.82	
7264.00†	75.222	340.381	6938.89	62.22	214.42	423.52	1709810.34	14362480.84	39°33'1.9317"N	80°45'13.7648"W	474.71	63.148	5.91	5.90	-0.26	Marcellus POE: 7264' MD
7308.00	77.820	340.270	6949.15	105.01	254.70	409.12	1709795.94	14362521.11	39°33'2.3303"N	80°45'13.9473"W	481.93	58.095	5.91	5.90	-0.25	
7403.00	85.720	341.010	6962.73	198.95	343.34	377.98	1709764.81	14362609.71	39°33'3.2071"N	80°45'14.3417"W	510.64	47.749	8.35	8.32	0.78	
7497.00	89.570	341.280	6966.60	292.85	432.21	347.63	1709734.48	14362698.54	39°33'4.0862"N	80°45'14.7260"W	554.66	38.811	4.11	4.10	0.29	
7592.00	89.110	341.330	6967.69	387.84	522.19	317.19	1709704.04	14362788.49	39°33'4.9763"N	80°45'15.1116"W	610.97	31.275	0.49	-0.48	0.05	
7687.00	89.750	342.310	6968.64	482.82	612.44	287.55	1709674.41	14362878.71	39°33'5.8691"N	80°45'15.4868"W	676.58	25.151	1.23	0.67	1.03	
7781.00	89.140	341.740	6969.55	576.78	701.85	258.54	1709645.42	14362968.08	39°33'6.7535"N	80°45'15.8540"W	747.95	20.222	0.89	-0.65	-0.61	
7876.00	90.150	341.400	6970.13	671.77	791.97	228.51	1709615.40	14363058.17	39°33'7.6451"N	80°45'16.2343"W	824.28	16.095	1.12	1.06	-0.36	



Actual Wellpath Report

Blake Unit 1H AWP Proj: 19488'

Page 5 of 11



REFERENCE WELLPATH IDENTIFICATION			
Operator	ANTERO RESOURCES CORPORATION	Well	Blake Unit 1H
Field	Wetzel	API	47-103-03403-0000
Facility	Gadd Pad	Wellbore	Blake Unit 1H AWB
Slot	Slot #03		

WELLPATH DATA (213 stations)																
MD [ft]	Inclination [°]	Azimuth [°]	TVD [ft]	Vert Sect [ft]	North [ft]	East [ft]	Grid East [US ft]	Grid North [US ft]	Latitude	Longitude	Closure Dist [ft]	Closure Dir [°]	DLS [°/100ft]	Build Rate [°/100ft]	Turn Rate [°/100ft]	Comments
7970.00	89.080	341.700	6970.77	765.76	881.13	198.76	1709585.66	14363147.30	39°33'8.5271"N	80°45'16.6109"W	903.27	12.712	1.18	-1.14	0.32	
8065.00	89.940	341.050	6971.58	860.74	971.15	168.42	1709555.33	14363237.28	39°33'9.4176"N	80°45'16.9951"W	985.65	9.839	1.13	0.91	-0.68	
8160.00	89.170	342.010	6972.32	955.73	1061.26	138.33	1709525.25	14363327.35	39°33'10.3089"N	80°45'17.3762"W	1070.23	7.426	1.30	-0.81	1.01	
8254.00	89.140	342.130	6973.70	1049.69	1150.68	109.39	1709496.33	14363416.74	39°33'11.1935"N	80°45'17.7425"W	1155.87	5.431	0.13	-0.03	0.13	
8349.00	89.200	341.720	6975.08	1144.66	1240.98	79.92	1709466.87	14363507.00	39°33'12.0868"N	80°45'18.1156"W	1243.55	3.685	0.44	0.06	-0.43	
8444.00	89.570	342.240	6976.10	1239.63	1331.32	50.53	1709437.49	14363597.30	39°33'12.9804"N	80°45'18.4876"W	1332.28	2.174	0.67	0.39	0.55	
8538.00	90.370	341.850	6976.15	1333.60	1420.74	21.56	1709408.53	14363686.69	39°33'13.8649"N	80°45'18.8544"W	1420.90	0.869	0.95	0.85	-0.41	
8633.00	89.110	341.590	6976.58	1428.58	1510.94	-8.24	1709378.74	14363776.85	39°33'14.7572"N	80°45'19.2317"W	1510.97	359.688	1.35	-1.33	-0.27	
8728.00	89.450	342.510	6977.77	1523.55	1601.31	-37.52	1709349.48	14363867.19	39°33'15.6511"N	80°45'19.6023"W	1601.75	358.658	1.03	0.36	0.97	
8822.00	88.860	341.260	6979.16	1617.51	1690.64	-66.74	1709320.27	14363956.48	39°33'16.5348"N	80°45'19.9723"W	1691.96	357.739	1.47	-0.63	-1.33	
8917.00	89.290	342.910	6980.69	1712.47	1781.02	-95.96	1709291.06	14364046.82	39°33'17.4288"N	80°45'20.3422"W	1783.60	356.916	1.79	0.45	1.74	
9012.00	88.920	340.950	6982.18	1807.43	1871.32	-125.42	1709261.61	14364137.08	39°33'18.3220"N	80°45'20.7152"W	1875.52	356.166	2.10	-0.39	-2.06	
9107.00	87.750	339.910	6984.94	1902.38	1960.79	-157.22	1709229.82	14364226.52	39°33'19.2071"N	80°45'21.1181"W	1967.08	355.416	1.65	-1.23	-1.09	
9201.00	88.860	339.800	6987.72	1996.33	2049.00	-189.58	1709197.47	14364314.70	39°33'20.0798"N	80°45'21.5282"W	2057.75	354.714	1.19	1.18	-0.12	
9296.00	88.740	340.170	6989.71	2091.30	2138.24	-222.09	1709164.98	14364403.90	39°33'20.9627"N	80°45'21.9402"W	2149.74	354.070	0.41	-0.13	0.39	
9391.00	88.710	339.270	6991.82	2186.27	2227.33	-255.01	1709132.07	14364492.96	39°33'21.8440"N	80°45'22.3573"W	2241.88	353.469	0.95	-0.03	-0.95	
9485.00	90.400	341.830	6992.55	2280.25	2315.95	-286.31	1709100.79	14364581.54	39°33'22.7207"N	80°45'22.7538"W	2333.58	352.953	3.26	1.80	2.72	
9580.00	89.720	339.900	6992.45	2375.25	2405.70	-317.45	1709069.66	14364671.25	39°33'23.6086"N	80°45'23.1483"W	2426.55	352.483	2.15	-0.72	-2.03	
9674.00	89.690	339.980	6992.94	2469.24	2493.99	-349.69	1709037.43	14364759.51	39°33'24.4821"N	80°45'23.5569"W	2518.39	352.018	0.09	-0.03	0.09	
9769.00	90.060	340.770	6993.14	2564.23	2583.47	-381.59	1709005.54	14364848.96	39°33'25.3673"N	80°45'23.9611"W	2611.50	351.598	0.92	0.39	0.83	
9863.00	90.000	338.580	6993.09	2658.21	2671.62	-414.24	1708972.90	14364937.07	39°33'26.2393"N	80°45'24.3749"W	2703.54	351.186	2.33	-0.06	-2.33	
9958.00	89.570	338.000	6993.45	2753.13	2759.88	-449.38	1708937.78	14365025.29	39°33'27.1125"N	80°45'24.8205"W	2796.22	350.752	0.76	-0.45	-0.61	
10053.00	89.910	338.930	6993.88	2848.06	2848.24	-484.25	1708902.92	14365113.62	39°33'27.9868"N	80°45'25.2627"W	2889.12	350.351	1.04	0.36	0.98	
10147.00	89.350	335.420	6994.49	2941.86	2934.87	-520.71	1708866.48	14365200.21	39°33'28.8439"N	80°45'25.7252"W	2980.70	349.939	3.78	-0.60	-3.73	
10242.00	89.750	335.350	6995.23	3036.46	3021.23	-560.28	1708826.92	14365286.54	39°33'29.6985"N	80°45'26.2274"W	3072.74	349.494	0.43	0.42	-0.07	
10336.00	89.510	337.230	6995.84	3130.17	3107.29	-598.07	1708789.14	14365372.57	39°33'30.5501"N	80°45'26.7069"W	3164.32	349.105	2.02	-0.26	2.00	
10431.00	89.910	339.700	6996.32	3225.09	3195.65	-632.94	1708754.29	14365460.89	39°33'31.4243"N	80°45'27.1491"W	3257.73	348.797	2.63	0.42	2.60	
10526.00	89.880	340.500	6996.50	3320.09	3284.98	-665.28	1708721.96	14365550.18	39°33'32.3080"N	80°45'27.5589"W	3351.67	348.551	0.84	-0.03	0.84	
10620.00	89.660	340.510	6996.87	3414.09	3373.59	-696.65	1708690.61	14365638.76	39°33'33.1846"N	80°45'27.9563"W	3444.77	348.332	0.23	-0.23	0.01	
10715.00	89.450	339.400	6997.61	3509.08	3462.83	-729.21	1708658.06	14365727.97	39°33'34.0674"N	80°45'28.3690"W	3538.77	348.108	1.19	-0.22	-1.17	



Actual Wellpath Report

Blake Unit 1H AWP Proj: 19488'

Page 6 of 11



REFERENCE WELLPATH IDENTIFICATION			
Operator	ANTERO RESOURCES CORPORATION	Well	Blake Unit 1H
Field	Wetzel	API	47-103-03403-0000
Facility	Gadd Pad	Wellbore	Blake Unit 1H AWB
Slot	Slot #03		

WELLPATH DATA (213 stations)																
MD (ft)	Inclination (°)	Azimuth (°)	TVD (ft)	Vert Sect (ft)	North (ft)	East (ft)	Grid East (US ft)	Grid North (US ft)	Latitude	Longitude	Closure Dist (ft)	Closure Dir (°)	DLS (°/100ft)	Build Rate (°/100ft)	Turn Rate (°/100ft)	Comments
10810.00	89.940	340.010	6998.12	3604.06	3551.93	-762.16	1708625.12	14365817.03	39°33'34.9489"N	80°45'28.7866"W	3632.78	347.889	0.82	0.52	0.64	
10904.00	89.660	339.700	6998.45	3698.05	3640.18	-794.53	1708592.76	14365905.24	39°33'35.8219"N	80°45'29.1969"W	3725.88	347.687	0.44	-0.30	-0.33	
10999.00	89.940	340.500	6998.78	3793.04	3729.50	-826.87	1708560.44	14365994.53	39°33'36.7056"N	80°45'29.6067"W	3820.07	347.499	0.89	0.29	0.84	
11094.00	89.260	339.450	6999.44	3888.03	3818.76	-859.40	1708527.92	14366083.75	39°33'37.5886"N	80°45'30.0190"W	3914.26	347.317	1.32	-0.72	-1.11	
11188.00	89.940	340.400	7000.10	3982.02	3907.04	-891.66	1708495.67	14366172.00	39°33'38.4620"N	80°45'30.4279"W	4007.50	347.144	1.24	0.72	1.01	
11283.00	90.580	339.510	6999.67	4077.01	3996.28	-924.22	1708463.12	14366261.21	39°33'39.3449"N	80°45'30.8406"W	4101.77	346.978	1.15	0.67	-0.94	
11377.00	90.000	339.380	6999.19	4170.99	4084.30	-957.23	1708430.13	14366349.19	39°33'40.2156"N	80°45'31.2589"W	4194.97	346.810	0.63	-0.62	-0.14	
11472.00	89.850	339.410	6999.31	4265.96	4173.22	-990.66	1708396.71	14366438.08	39°33'41.0953"N	80°45'31.6827"W	4289.19	346.646	0.16	-0.16	0.03	
11566.00	90.060	339.630	6999.39	4359.94	4261.28	-1023.55	1708363.84	14366526.10	39°33'41.9665"N	80°45'32.0996"W	4382.48	346.494	0.32	0.22	0.23	
11661.00	90.090	339.720	6999.26	4454.93	4350.36	-1056.55	1708330.85	14366615.15	39°33'42.8478"N	80°45'32.5179"W	4476.82	346.349	0.10	0.03	0.09	
11756.00	89.850	339.810	6999.31	4549.92	4439.50	-1089.40	1708298.01	14366704.25	39°33'43.7296"N	80°45'32.9344"W	4571.21	346.213	0.27	-0.25	0.09	
11850.00	90.120	340.100	6999.34	4643.91	4527.81	-1121.62	1708265.80	14366792.52	39°33'44.6032"N	80°45'33.3428"W	4664.66	346.087	0.42	0.29	0.31	
11944.00	90.220	342.330	6999.06	4737.90	4616.79	-1151.89	1708235.55	14366881.47	39°33'45.4835"N	80°45'33.7262"W	4758.32	345.991	2.37	0.11	2.37	
12039.00	90.250	341.870	6998.67	4832.87	4707.19	-1181.09	1708206.36	14366971.84	39°33'46.3777"N	80°45'34.0959"W	4853.11	345.915	0.49	0.03	-0.48	
12134.00	89.880	340.410	6998.56	4927.86	4797.09	-1211.80	1708175.66	14367061.70	39°33'47.2670"N	80°45'34.4849"W	4947.78	345.823	1.59	-0.39	-1.54	
12228.00	89.880	342.000	6998.76	5021.85	4886.08	-1242.08	1708145.39	14367150.65	39°33'48.1473"N	80°45'34.8686"W	5041.48	345.737	1.69	0.00	1.69	
12323.00	89.600	340.370	6999.19	5116.85	4976.00	-1272.72	1708114.77	14367240.53	39°33'49.0368"N	80°45'35.2567"W	5136.18	345.653	1.74	-0.29	-1.72	
12417.00	90.400	342.900	6999.19	5210.82	5065.20	-1302.33	1708085.16	14367329.70	39°33'49.9192"N	80°45'35.6318"W	5229.94	345.581	2.82	0.85	2.69	
12512.00	89.780	341.750	6999.04	5305.78	5155.71	-1331.18	1708056.33	14367420.18	39°33'50.8145"N	80°45'35.9970"W	5324.79	345.523	1.38	-0.65	-1.21	
12607.00	90.060	342.270	6999.17	5400.76	5246.07	-1360.52	1708027.00	14367510.50	39°33'51.7083"N	80°45'36.3685"W	5419.62	345.461	0.62	0.29	0.55	
12701.00	89.970	342.800	6999.15	5494.71	5335.73	-1388.73	1707998.80	14367600.13	39°33'52.5952"N	80°45'36.7257"W	5513.50	345.411	0.57	-0.10	0.56	
12796.00	89.750	341.450	6999.38	5589.67	5426.15	-1417.89	1707969.66	14367690.50	39°33'53.4895"N	80°45'37.0949"W	5608.34	345.356	1.44	-0.23	-1.42	
12891.00	89.570	341.330	6999.94	5684.67	5516.18	-1448.20	1707939.35	14367780.50	39°33'54.3801"N	80°45'37.4790"W	5703.11	345.290	0.23	-0.19	-0.13	
12986.00	90.250	342.080	7000.09	5779.65	5606.37	-1478.02	1707909.54	14367870.66	39°33'55.2724"N	80°45'37.8567"W	5797.93	345.231	1.07	0.72	0.79	
13081.00	90.000	342.030	6999.89	5874.62	5696.75	-1507.29	1707880.28	14367961.00	39°33'56.1664"N	80°45'38.2273"W	5892.79	345.180	0.27	-0.26	-0.05	
13175.00	89.820	341.810	7000.03	5968.60	5786.11	-1536.47	1707851.12	14368050.33	39°33'57.0503"N	80°45'38.5968"W	5986.64	345.129	0.30	-0.19	-0.23	
13270.00	90.310	342.440	6999.93	6063.57	5876.52	-1565.62	1707821.98	14368140.70	39°33'57.9446"N	80°45'38.9661"W	6081.51	345.082	0.84	0.52	0.66	
13365.00	89.910	342.480	6999.74	6158.52	5967.11	-1594.26	1707793.36	14368231.25	39°33'58.8406"N	80°45'39.3286"W	6176.41	345.041	0.42	-0.42	0.04	
13459.00	89.970	341.820	6999.84	6252.49	6056.58	-1623.07	1707764.56	14368320.69	39°33'59.7257"N	80°45'39.6934"W	6270.29	344.998	0.71	0.06	-0.70	
13554.00	90.120	342.480	6999.77	6347.46	6147.01	-1652.19	1707735.45	14368411.08	39°34'0.6201"N	80°45'40.0622"W	6365.17	344.956	0.71	0.16	0.69	



Actual Wellpath Report

Blake Unit 1H AWP Proj: 19488'
Page 7 of 11



REFERENCE WELLPATH IDENTIFICATION			
Operator	ANTERO RESOURCES CORPORATION	Well	Blake Unit 1H
Field	Wetzel	API	47-103-03403-0000
Facility	Gadd Pad	Wellbore	Blake Unit 1H AWB
Slot	Slot #03		

WELLPATH DATA (213 stations)																
MD [ft]	Inclination [°]	Azimuth [°]	TVD [ft]	Vert Sect [ft]	North [ft]	East [ft]	Grid East [US ft]	Grid North [US ft]	Latitude	Longitude	Closure Dist [ft]	Closure Dir [°]	DLS [°/100ft]	Build Rate [°/100ft]	Turn Rate [°/100ft]	Comments
13649.00	89.820	342.080	6999.82	6442.42	6237.50	-1681.10	1707706.54	14368501.54	39°34'1.5152"N	80°45'40.4283"W	6460.07	344.916	0.53	-0.32	-0.42	
13744.00	89.970	341.840	6999.99	6537.40	6327.83	-1710.52	1707677.14	14368591.83	39°34'2.4088"N	80°45'40.8009"W	6554.95	344.873	0.30	0.16	-0.25	
13838.00	90.280	342.600	6999.79	6631.36	6417.34	-1739.23	1707648.44	14368681.30	39°34'3.2942"N	80°45'41.1644"W	6648.85	344.836	0.87	0.33	0.81	
13933.00	90.150	341.630	6999.43	6726.33	6507.75	-1768.40	1707619.28	14368771.68	39°34'4.1884"N	80°45'41.5339"W	6743.74	344.798	1.03	-0.14	-1.02	
14027.00	90.400	342.080	6998.98	6820.31	6597.07	-1797.67	1707590.02	14368860.96	39°34'5.0720"N	80°45'41.9047"W	6837.61	344.757	0.55	0.27	0.48	
14122.00	90.060	342.040	6998.60	6915.28	6687.45	-1826.94	1707560.77	14368951.31	39°34'5.9660"N	80°45'42.2753"W	6932.51	344.720	0.36	-0.36	-0.04	
14216.00	90.060	341.280	6998.50	7009.27	6776.68	-1856.51	1707531.20	14369040.50	39°34'6.8486"N	80°45'42.6499"W	7026.38	344.679	0.81	0.00	-0.81	
14311.00	90.220	342.130	6998.27	7104.25	6886.87	-1886.33	1707501.39	14369130.66	39°34'7.7408"N	80°45'43.0277"W	7121.25	344.640	0.91	0.17	0.89	
14405.00	89.940	342.280	6998.14	7198.22	6956.38	-1915.06	1707472.68	14369220.13	39°34'8.6262"N	80°45'43.3915"W	7215.17	344.608	0.34	-0.30	0.16	
14500.00	90.370	341.580	6997.88	7293.19	7046.69	-1944.53	1707443.22	14369310.40	39°34'9.5195"N	80°45'43.7647"W	7310.06	344.573	0.86	0.45	-0.74	
14595.00	90.280	341.820	6997.34	7388.18	7136.88	-1974.36	1707413.41	14369400.56	39°34'10.4117"N	80°45'44.1425"W	7404.94	344.536	0.27	-0.09	0.25	
14689.00	90.220	342.240	6996.93	7482.15	7226.30	-2003.36	1707384.42	14369489.94	39°34'11.2962"N	80°45'44.5098"W	7498.85	344.505	0.45	-0.06	0.45	
14783.00	90.430	340.630	6996.40	7576.14	7315.40	-2033.28	1707354.50	14369579.01	39°34'12.1776"N	80°45'44.8890"W	7592.71	344.467	1.73	0.22	-1.71	
14878.00	90.150	340.390	6995.92	7671.13	7404.96	-2064.98	1707322.82	14369668.53	39°34'13.0635"N	80°45'45.2907"W	7687.49	344.418	0.39	-0.29	-0.25	
14973.00	90.280	340.300	6995.56	7766.13	7494.42	-2096.93	1707290.88	14369757.96	39°34'13.9485"N	80°45'45.6957"W	7782.25	344.368	0.17	0.14	-0.09	
15067.00	90.370	339.940	6995.03	7860.13	7582.82	-2128.90	1707258.93	14369846.32	39°34'14.8230"N	80°45'46.1009"W	7876.00	344.318	0.39	0.10	-0.38	
15162.00	90.180	339.770	6994.57	7955.12	7672.00	-2161.61	1707226.22	14369935.47	39°34'15.7053"N	80°45'46.5157"W	7970.71	344.265	0.27	-0.20	-0.18	
15257.00	90.150	340.190	6994.30	8050.11	7761.26	-2194.14	1707193.71	14370024.69	39°34'16.5883"N	80°45'46.9280"W	8065.45	344.214	0.44	-0.03	0.44	
15351.00	90.370	339.820	6993.87	8144.10	7849.59	-2226.28	1707161.58	14370112.99	39°34'17.4622"N	80°45'47.3355"W	8159.19	344.166	0.46	0.23	-0.39	
15446.00	90.400	339.910	6993.23	8239.09	7938.79	-2258.98	1707128.90	14370202.15	39°34'18.3445"N	80°45'47.7501"W	8253.93	344.116	0.10	0.03	0.09	
15540.00	90.620	339.660	6992.39	8333.07	8026.99	-2291.46	1707096.43	14370290.32	39°34'19.2171"N	80°45'48.1619"W	8347.66	344.068	0.35	0.23	-0.27	
15635.00	90.710	339.800	6991.29	8428.05	8116.10	-2324.37	1707063.53	14370379.40	39°34'20.0987"N	80°45'48.5791"W	8442.38	344.019	0.18	0.09	0.15	
15730.00	90.490	339.420	6990.30	8523.03	8205.15	-2357.47	1707030.45	14370468.40	39°34'20.9796"N	80°45'48.9988"W	8537.10	343.970	0.46	-0.23	-0.40	
15825.00	90.550	339.670	6989.43	8618.01	8294.15	-2390.67	1706997.26	14370557.37	39°34'21.8601"N	80°45'49.4197"W	8631.82	343.921	0.27	0.06	0.26	
15919.00	90.580	339.780	6988.51	8711.99	8382.32	-2423.24	1706964.70	14370645.51	39°34'22.7323"N	80°45'49.8327"W	8725.56	343.876	0.12	0.03	0.12	
16014.00	90.620	339.700	6987.51	8806.97	8471.44	-2456.13	1706931.82	14370734.59	39°34'23.6140"N	80°45'50.2498"W	8820.31	343.831	0.09	0.04	-0.08	
16109.00	90.650	340.280	6986.46	8901.96	8560.70	-2488.64	1706899.33	14370823.82	39°34'24.4970"N	80°45'50.6619"W	8915.09	343.791	0.61	0.03	0.61	
16203.00	90.400	339.630	6985.60	8995.95	8649.00	-2520.86	1706867.12	14370912.08	39°34'25.3705"N	80°45'51.0704"W	9008.88	343.751	0.74	-0.27	-0.69	
16298.00	90.490	339.720	6984.86	9090.93	8738.08	-2553.85	1706834.14	14371001.13	39°34'26.2518"N	80°45'51.4888"W	9103.64	343.708	0.13	0.09	0.09	
16488.00	90.430	339.420	6983.34	9280.89	8916.13	-2620.17	1706767.85	14371179.10	39°34'28.0131"N	80°45'52.3298"W	9293.15	343.624	0.16	-0.03	-0.16	



Actual Wellpath Report

Blake Unit 1H AWP Proj: 19488'

Page 8 of 11



REFERENCE WELLPATH IDENTIFICATION			
Operator	ANTERO RESOURCES CORPORATION	Well	Blake Unit 1H
Field	Wetzel	API	47-103-03403-0000
Facility	Gadd Pad	Wellbore	Blake Unit 1H AWB
Slot	Slot #03		

WELLPATH DATA (213 stations)																
MD [ft]	Inclination [°]	Azimuth [°]	TVD [ft]	Vert Sect [ft]	North [ft]	East [ft]	Grid East [US ft]	Grid North [US ft]	Latitude	Longitude	Closure Dist [ft]	Closure Dir [°]	DLS ["/100ft]	Build Rate ["/100ft]	Turn Rate ["/100ft]	Comments
16582.00	90.400	340.420	6982.65	9374.88	9004.41	-2652.44	1706735.59	14371267.35	39°34'28.8865"N	80°45'52.7389"W	9386.95	343.587	1.06	-0.03	1.06	
16677.00	90.460	340.130	6981.94	9469.87	9093.83	-2684.51	1706703.54	14371356.74	39°34'29.7711"N	80°45'53.1454"W	9481.79	343.553	0.31	0.06	-0.31	
16772.00	90.370	339.770	6981.25	9564.86	9183.07	-2717.08	1706670.98	14371445.94	39°34'30.6539"N	80°45'53.5583"W	9576.60	343.518	0.39	-0.09	-0.38	
16866.00	90.650	340.080	6980.42	9658.85	9271.36	-2749.34	1706638.73	14371534.19	39°34'31.5273"N	80°45'53.9674"W	9670.42	343.483	0.44	0.30	0.33	
16961.00	90.520	340.120	6979.45	9753.84	9360.68	-2781.67	1706606.41	14371623.48	39°34'32.4109"N	80°45'54.3774"W	9765.25	343.450	0.14	-0.14	0.04	
17055.00	90.650	339.970	6978.49	9847.83	9449.03	-2813.75	1706574.34	14371711.80	39°34'33.2850"N	80°45'54.7841"W	9859.08	343.417	0.21	0.14	-0.16	
17150.00	90.340	339.680	6977.67	9942.81	9538.20	-2846.52	1706541.59	14371800.93	39°34'34.1671"N	80°45'55.1995"W	9953.89	343.383	0.45	-0.33	-0.31	
17245.00	90.550	340.100	6976.93	10037.80	9627.41	-2879.18	1706508.94	14371890.10	39°34'35.0495"N	80°45'55.6137"W	10048.71	343.350	0.49	0.22	0.44	
17340.00	90.710	340.110	6975.88	10132.79	9716.73	-2911.50	1706476.63	14371979.39	39°34'35.9332"N	80°45'56.0235"W	10143.55	343.320	0.17	0.17	0.01	
17434.00	90.520	339.960	6974.88	10226.78	9805.08	-2943.60	1706444.55	14372067.70	39°34'36.8071"N	80°45'56.4304"W	10237.40	343.290	0.26	-0.20	-0.16	
17529.00	90.580	340.070	6973.96	10321.77	9894.35	-2976.07	1706412.10	14372156.94	39°34'37.6903"N	80°45'56.8421"W	10332.24	343.260	0.13	0.06	0.12	
17623.00	90.370	339.710	6973.18	10415.76	9982.62	-3008.38	1706379.79	14372245.17	39°34'38.5635"N	80°45'57.2519"W	10426.07	343.229	0.44	-0.22	-0.38	
17718.00	90.370	339.740	6972.57	10510.74	10071.73	-3041.30	1706346.88	14372334.25	39°34'39.4450"N	80°45'57.6693"W	10520.90	343.198	0.03	0.00	0.03	
17813.00	90.860	340.600	6971.55	10605.73	10161.09	-3073.53	1706314.67	14372423.57	39°34'40.3290"N	80°45'58.0779"W	10615.76	343.170	1.04	0.52	0.91	
17908.00	90.830	340.700	6970.15	10700.72	10250.71	-3105.00	1706283.21	14372513.16	39°34'41.2156"N	80°45'58.4769"W	10710.66	343.148	0.11	-0.03	0.11	
18002.00	90.980	340.260	6968.67	10794.71	10339.30	-3136.41	1706251.82	14372601.71	39°34'42.0919"N	80°45'58.8750"W	10804.54	343.125	0.49	0.16	-0.47	
18097.00	90.779	339.780	6967.21	10889.69	10428.57	-3168.86	1706219.37	14372690.95	39°34'42.9751"N	80°45'59.2866"W	10899.39	343.098	0.55	-0.22	-0.51	
18192.00	90.460	339.810	6966.19	10984.67	10517.72	-3201.67	1706186.58	14372780.06	39°34'43.8570"N	80°45'59.7026"W	10994.23	343.069	0.33	-0.33	0.03	
18287.00	90.520	338.860	6965.38	11079.64	10606.60	-3235.20	1706153.07	14372868.91	39°34'44.7363"N	80°46'0.1278"W	11089.03	343.037	1.00	0.06	-1.00	
18381.00	90.770	339.560	6964.32	11173.60	10694.48	-3268.56	1706119.72	14372956.75	39°34'45.6056"N	80°46'0.5510"W	11182.81	343.005	0.79	0.27	0.74	
18476.00	90.680	339.770	6963.12	11268.58	10783.55	-3301.57	1706086.72	14373045.78	39°34'46.4868"N	80°46'0.9696"W	11277.65	342.977	0.24	-0.09	0.22	
18570.00	90.740	342.030	6961.96	11362.57	10872.36	-3332.32	1706055.98	14373134.56	39°34'47.3653"N	80°46'1.3595"W	11371.57	342.960	2.40	0.06	2.40	
18665.00	90.740	341.550	6960.73	11457.54	10962.60	-3362.01	1706026.31	14373224.76	39°34'48.2579"N	80°46'1.7356"W	11466.54	342.950	0.51	0.00	-0.51	
18760.00	90.800	340.980	6959.45	11552.53	11052.55	-3392.52	1705995.81	14373314.68	39°34'49.1477"N	80°46'2.1223"W	11561.49	342.936	0.60	0.06	-0.60	
18854.00	90.650	340.840	6958.26	11646.52	11141.38	-3423.26	1705965.08	14373403.47	39°34'50.0264"N	80°46'2.5119"W	11655.43	342.920	0.22	-0.16	-0.15	
18949.00	90.890	341.820	6956.99	11741.50	11231.37	-3453.67	1705934.68	14373493.42	39°34'50.9166"N	80°46'2.8973"W	11750.38	342.907	1.06	0.25	1.03	
19044.00	90.990	341.600	6955.43	11836.48	11321.56	-3483.48	1705904.88	14373583.58	39°34'51.8087"N	80°46'3.2751"W	11845.35	342.898	0.25	0.11	-0.23	
19138.00	89.600	341.580	6954.94	11930.46	11410.74	-3513.16	1705875.21	14373672.73	39°34'52.6909"N	80°46'3.6512"W	11939.32	342.887	1.48	-1.48	-0.02	
19233.00	89.910	341.650	6955.35	12025.45	11500.89	-3543.12	1705845.26	14373762.84	39°34'53.5826"N	80°46'4.0309"W	12034.30	342.877	0.33	0.33	0.07	
19328.00	89.320	341.650	6955.99	12120.43	11591.06	-3573.03	1705815.37	14373852.97	39°34'54.4745"N	80°46'4.4099"W	12129.27	342.868	0.62	-0.62	0.00	



Actual Wellpath Report

Blake Unit 1H AWP Proj: 19488'
Page 9 of 11



REFERENCE WELLPATH IDENTIFICATION			
Operator	ANTERO RESOURCES CORPORATION	Well	Blake Unit 1H
Field	Wetzel	API	47-103-03403-0000
Facility	Gadd Pad	Wellbore	Blake Unit 1H AWB
Slot	Slot #03		

WELLPATH DATA (213 stations) † = interpolated, ‡ = extrapolated station																
MD	Inclination	Azimuth	TVD	Vert Sect	North	East	Grid East	Grid North	Latitude	Longitude	Closure Dist	Closure Dir	DLS	Build Rate	Turn Rate	Comments
[ft]	[°]	[°]	[ft]	[ft]	[ft]	[ft]	[US ft]	[US ft]			[ft]	[°]	[°/100ft]	[°/100ft]	[°/100ft]	
19422.00	89.450	341.840	6957.00	12214.41	11680.32	-3602.48	1705785.93	14373942.20	39°34'55.3575"N	80°46'4.7830"W	12223.25	342.859	0.24	0.14	0.20	
19465.00	89.320	341.830	6957.46	12257.40	11721.18	-3615.88	1705772.53	14373983.04	39°34'55.7616"N	80°46'4.9529"W	12266.24	342.855	0.30	-0.30	-0.02	
19488.00‡	89.320	341.830	6957.73	12280.39	11743.03	-3623.05	1705765.36	14374004.88	39°34'55.9777"N	80°46'5.0438"W	12289.23	342.854	0.00	0.00	0.00	Projected MD at TD: 19488'

HOLE & CASING SECTIONS - Ref Wellbore: Blake Unit 1H AWB Ref Wellpath: Blake Unit 1H AWP Proj: 19488'									
String/Diameter	Start MD	End MD	Interval	Start TVD	End TVD	Start N/S	Start E/W	End N/S	End E/W
	[ft]	[ft]	[ft]	[ft]	[ft]	[ft]	[ft]	[ft]	[ft]
20in Conductor	30.00	130.00	100.00	30.00	130.00	0.00	0.00	0.17	0.08
17.5in Open Hole	130.00	509.00	379.00	130.00	509.00	0.17	0.08	0.75	0.02
13.375in Casing Surface	30.00	474.00	444.00	30.00	474.00	0.00	0.00	0.72	0.16
12.25in Open Hole	509.00	2616.00	2107.00	509.00	2614.53	0.75	0.02	-32.97	34.22
9.625in Casing Intermediate	30.00	2596.00	2566.00	30.00	2594.53	0.00	0.00	-32.97	34.18
8.75in Open Hole	2616.00	6699.00	4083.00	2614.53	6615.52	-32.97	34.22	-208.24	566.93
8.5in Open Hole	6699.00	19488.00	12789.00	6615.52	6957.73	-208.24	566.93	11743.03	-3623.05
5.5in Casing Production	30.00	19488.00	19458.00	30.00	6957.73	0.00	0.00	11743.03	-3623.05



Actual Wellpath Report

Blake Unit 1H AWP Proj: 19488'

Page 10 of 11



REFERENCE WELLPATH IDENTIFICATION			
Operator	ANTERO RESOURCES CORPORATION	Well	Blake Unit 1H
Field	Wetzel	API	47-103-03403-0000
Facility	Gadd Pad	Wellbore	Blake Unit 1H AWB
Slot	Slot #03		

TARGETS								
Name	TVD [ft]	North [ft]	East [ft]	Grid East [US ft]	Grid North [US ft]	Latitude	Longitude	Shape
Blake Unit 1H POE Rev-2	6931.00	189.79	433.03	1709819.84	14362456.22	39°33'1.6880"N	80°45'13.6443"W	point
Blake Unit 1H BHL Rev-2	6959.00	11764.78	-3625.23	1705763.19	14374026.62	39°34'56.1927"N	80°46'5.0708"W	point
Blake Unit 1H LP Rev-2	6959.00	376.92	367.42	1709754.26	14362643.28	39°33'3.5392"N	80°45'14.4754"W	point
Blake Unit 1H 50' L/R Hard Line Rev-2	7250.00	5977.28	-1596.10	1707791.51	14368241.42	39°33'58.9412"N	80°45'39.3517"W	rectangle
2D Rectangle 12265.8 x 100.								

WELLPATH COMPOSITION - Ref Wellbore: Blake Unit 1H AWB Ref Wellpath: Blake Unit 1H AWP Proj: 19488'						
Start MD [ft]	End MD [ft]	Positional Uncertainty Model	Log Name/Comment	Wellbore	Survey Date	
30.00	384.00	Gyrodata 2015 - GC+WIR+DPIPE	01 Gyrodata MS Gyro <17-1/2"> (100'-384')	Blake Unit 1H AWB	03/Aug/2021	
384.00	2542.00	BH NaviTrak (2019) (Axial Corr+HRGM)	02 APS EM <12-1/4"> (384')(506'-2542')	Blake Unit 1H AWB	03/Aug/2021	
2542.00	6631.00	BH NaviTrak (2019) (Axial Corr+HRGM)	03 APS EM <8-3/4"> (2542')(2655'-6631')	Blake Unit 1H AWB	03/Aug/2021	
6631.00	19488.00	BH AutoTrak Curve/eXpress (2019) (HRGM, Short spacing)	04 BH AT Curve <8-1/2"> (6631')(6681'-19465')	Blake Unit 1H AWB	03/Aug/2021	



Actual Wellpath Report

Blake Unit 1H AWP Proj: 19488'

Page 11 of 11



REFERENCE WELLPATH IDENTIFICATION			
Operator	ANTERO RESOURCES CORPORATION	Well	Blake Unit 1H
Field	Wetzel	API	47-103-03403-0000
Facility	Gadd Pad	Wellbore	Blake Unit 1H AWB
Slot	Slot #03		

COMMENTS

Wellpath general comments

API: 47-103-03403-0000

BH Job #: 110972287

Rig: H&P 519

Duration: 8/4/2021-8/11/2021

Gyrodatta MS Gyro <17-1/2"> (100'-384')

APS EM <12-1/4"> (384')(506'-2542')

APS EM <8-3/4"> (2542')(2655'-6631')

BH AT Curve <8-1/2"> (6631')(6681'-19465')

Sycamore: 6687' MD

Middlesex: 6850' MD

Burkett: 7004' MD

Tully: 7058' MD

Marcellus POE: 7264' MD

Projected MD at TD: 19488'