

WW-7  
8-30-06



West Virginia Department of Environmental Protection  
Office of Oil and Gas  
**WELL LOCATION FORM: GPS**

API: 47-103-71022 WELL NO.: 7183

FARM NAME: GENINE ROBINSON

RESPONSIBLE PARTY NAME: WEST VIRGINIA LAND RESOURCES INC.

COUNTY: WETZEL DISTRICT: GRANT

QUADRANGLE: FOLSOM W.VA

SURFACE OWNER: ROBERT P. & RANDALL B. NICHOLS

ROYALTY OWNER: \_\_\_\_\_

UTM GPS NORTHING: 4,371,141 m

UTM GPS EASTING: 541,627 m GPS ELEVATION: 408 m <sup>(1338')</sup>

The Responsible Party named above has chosen to submit GPS coordinates in lieu of preparing a new well location plat for a plugging permit or assigned API number on the above well. The Office of Oil and Gas will not accept GPS coordinates that do not meet the following requirements:

1. Datum: NAD 1983, Zone: 17 North, Coordinate Units: meters, Altitude: height above mean sea level (MSL) - meters.
2. Accuracy to Datum - 3.05 meters
3. Data Collection Method:

Survey grade GPS \_\_\_\_\_: Post Processed Differential \_\_\_\_\_

Real-Time Differential \_\_\_\_\_

Mapping Grade GPS X: Post Processed Differential X

Real-Time Differential \_\_\_\_\_

RECEIVED  
Office of Oil and Gas

FEB 17 2021

WV Department of  
Environmental Protection

4. **Letter size copy of the topography map showing the well location.**

I the undersigned, hereby certify this data is correct to the best of my knowledge and belief and shows all the information required by law and the regulations issued and prescribed by the Office of Oil and Gas.

Signature

Professional Surveyor

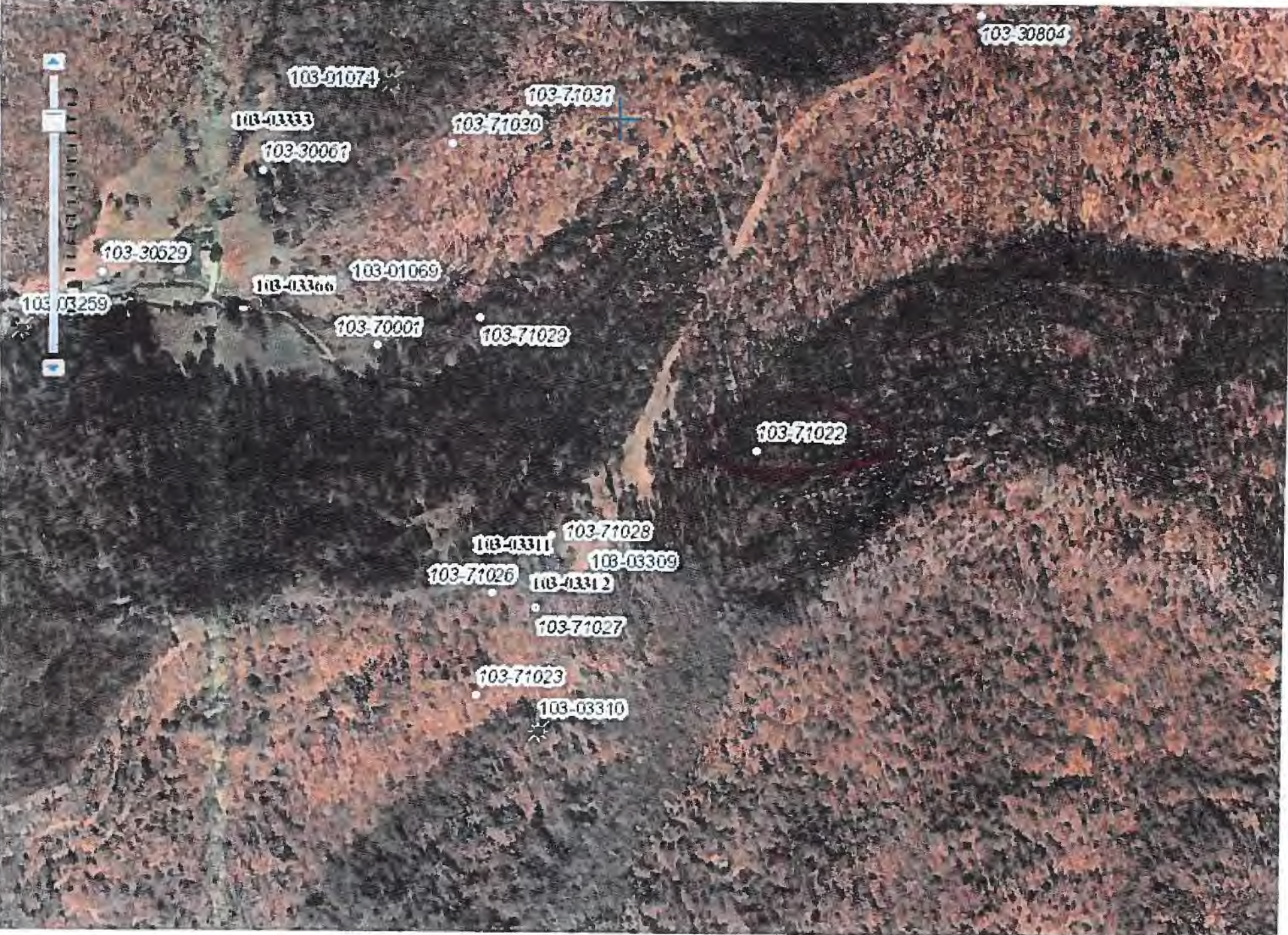
Title

DECEMBER 20, 2020

Date

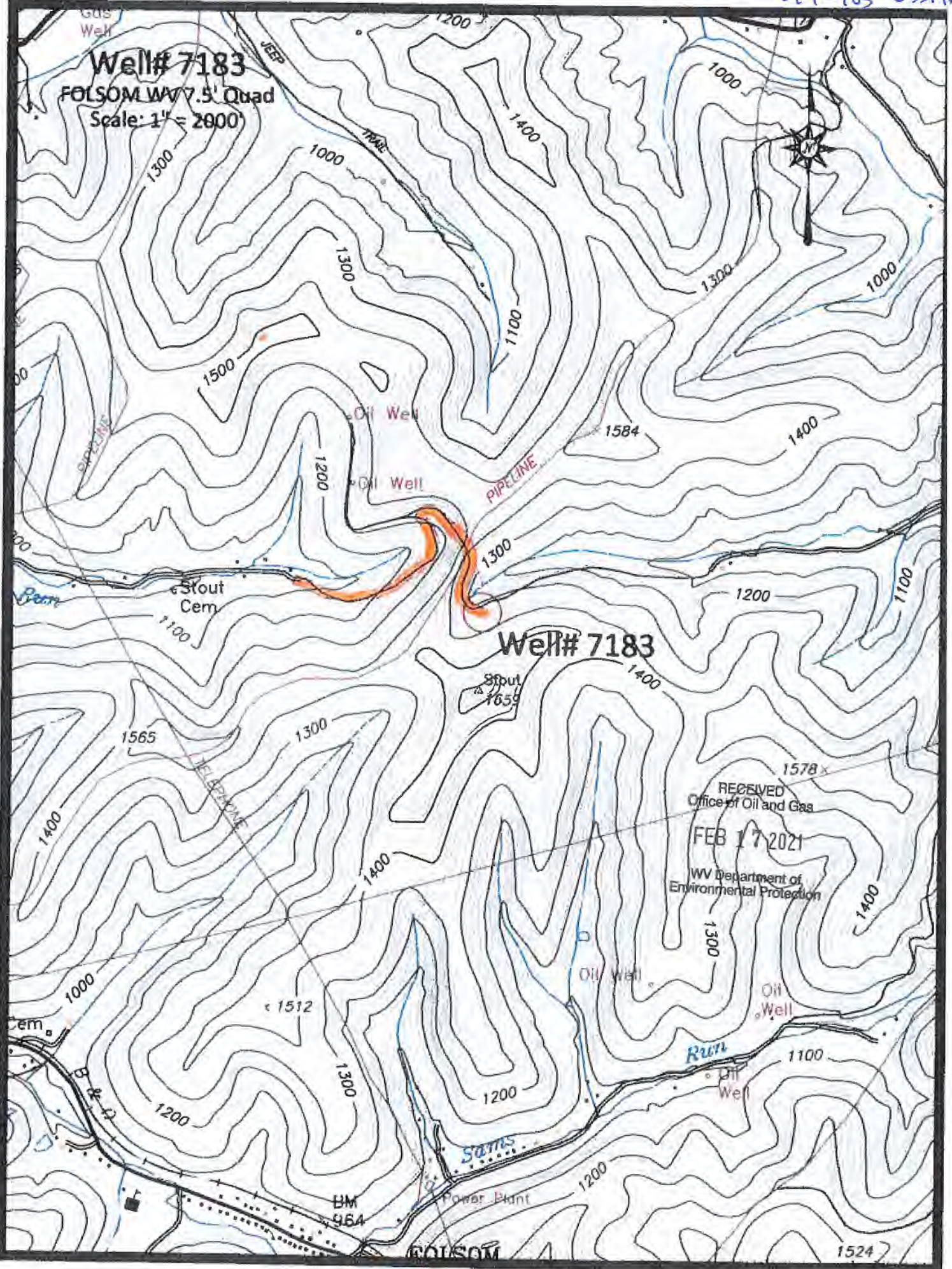


47-103-03374A





Well# 7183  
FOLSOM WV 7.5' Quad  
Scale: 1" = 2000'



RECEIVED  
Office of Oil and Gas  
FEB 17 2021  
WV Department of  
Environmental Protection

 Access Road



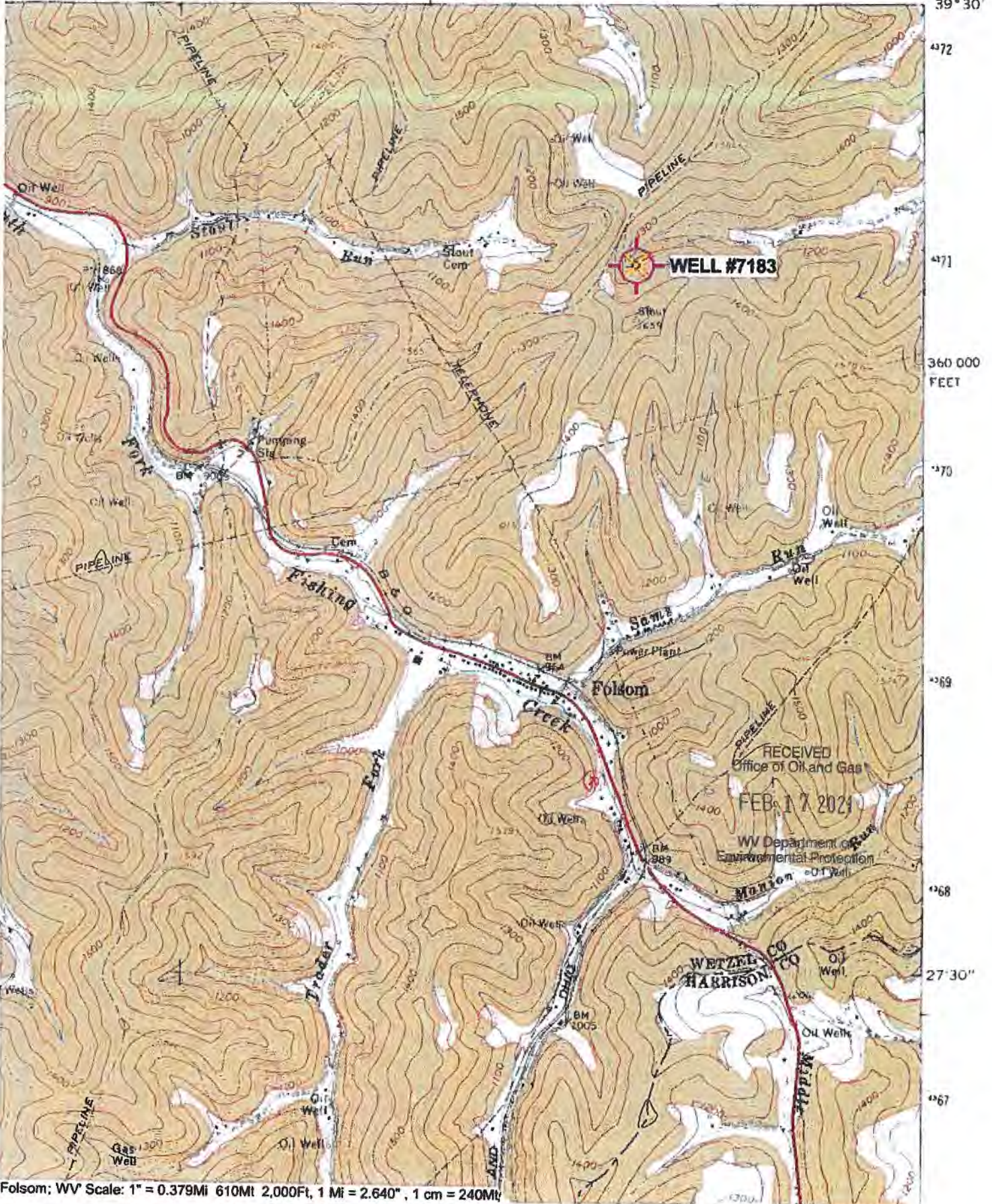
47-103-03374P

FOLSOM QUADRANGLE  
WEST VIRGINIA  
7.5 MINUTE SERIES (TOPOGRAPHIC)  
NE/4 CENTER POINT 15' QUADRANGLE

3983 III SV  
GLOVER

VEY

39 32'30" 40 1 710 000 FEET 42 80° 30' 39° 30'



Folsom; WV Scale: 1" = 0.379Mi 610M 2,000Ft, 1 Mi = 2.640" , 1 cm = 240M