

WW-7
8-30-06



West Virginia Department of Environmental Protection
Office of Oil and Gas

WELL LOCATION FORM: GPS

API: 47-103-30826 WELL NO.: 7207

FARM NAME: H. L. SMITH

RESPONSIBLE PARTY NAME: CONSOLIDATION COAL COMPANY

COUNTY: WETZEL DISTRICT: GRANT

QUADRANGLE: FOLSOM WV 7.5'

SURFACE OWNER: COASTAL FOREST RESOURCES COMPANY

ROYALTY OWNER: _____

UTM GPS NORTHING: 4,371,895 m

UTM GPS EASTING: 539,660 m GPS ELEVATION: 305 m (1000')

The Responsible Party named above has chosen to submit GPS coordinates in lieu of preparing a new well location plat for a plugging permit or assigned API number on the above well. The Office of Oil and Gas will not accept GPS coordinates that do not meet the following requirements:

1. Datum: NAD 1983, Zone: 17 North, Coordinate Units: meters, Altitude: height above mean sea level (MSL) – meters.
2. Accuracy to Datum – 3.05 meters
3. Data Collection Method:

Survey grade GPS _____: Post Processed Differential _____

Real-Time Differential _____

Mapping Grade GPS X: Post Processed Differential X

Real-Time Differential _____

4. Letter size copy of the topography map showing the well location.

I the undersigned, hereby certify this data is correct to the best of my knowledge and belief and shows all the information required by law and the regulations issued and prescribed by the Office of Oil and Gas.

Professional Surveyor

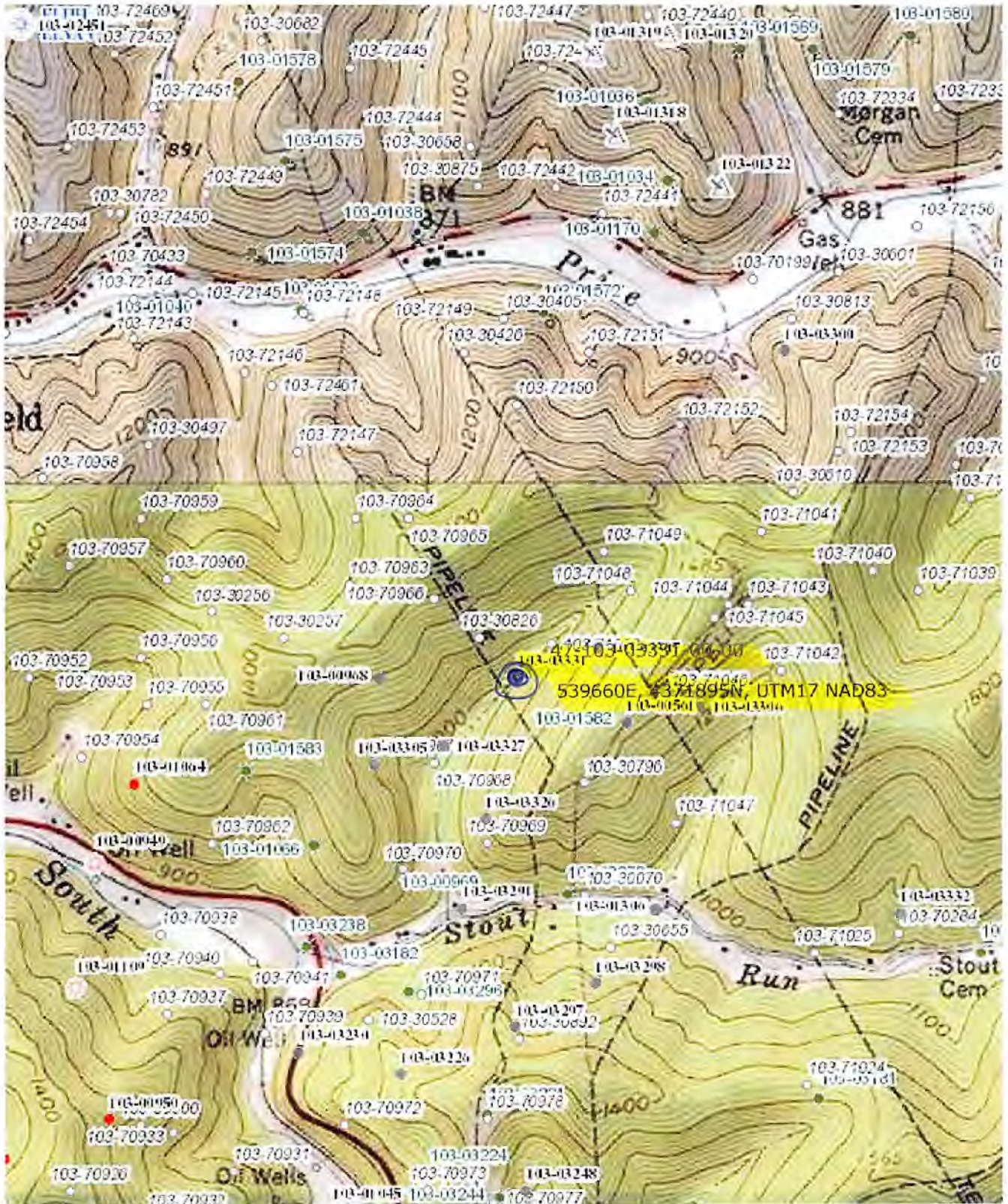
JUNE 12, 2019

Signature

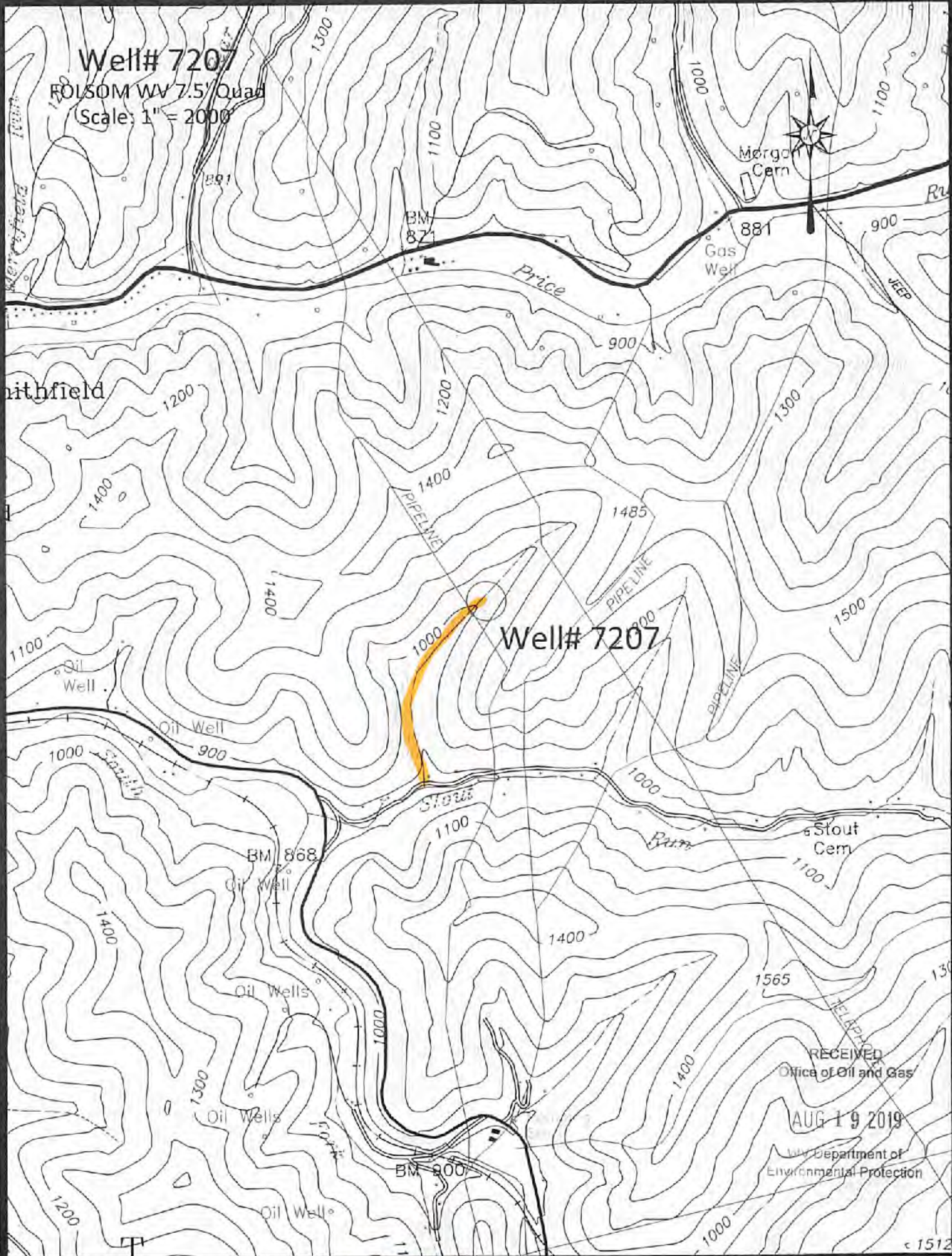
Title

Date

RECEIVED
Office of Oil and Gas
AUG 19 2019
WV Department of Environmental Protection



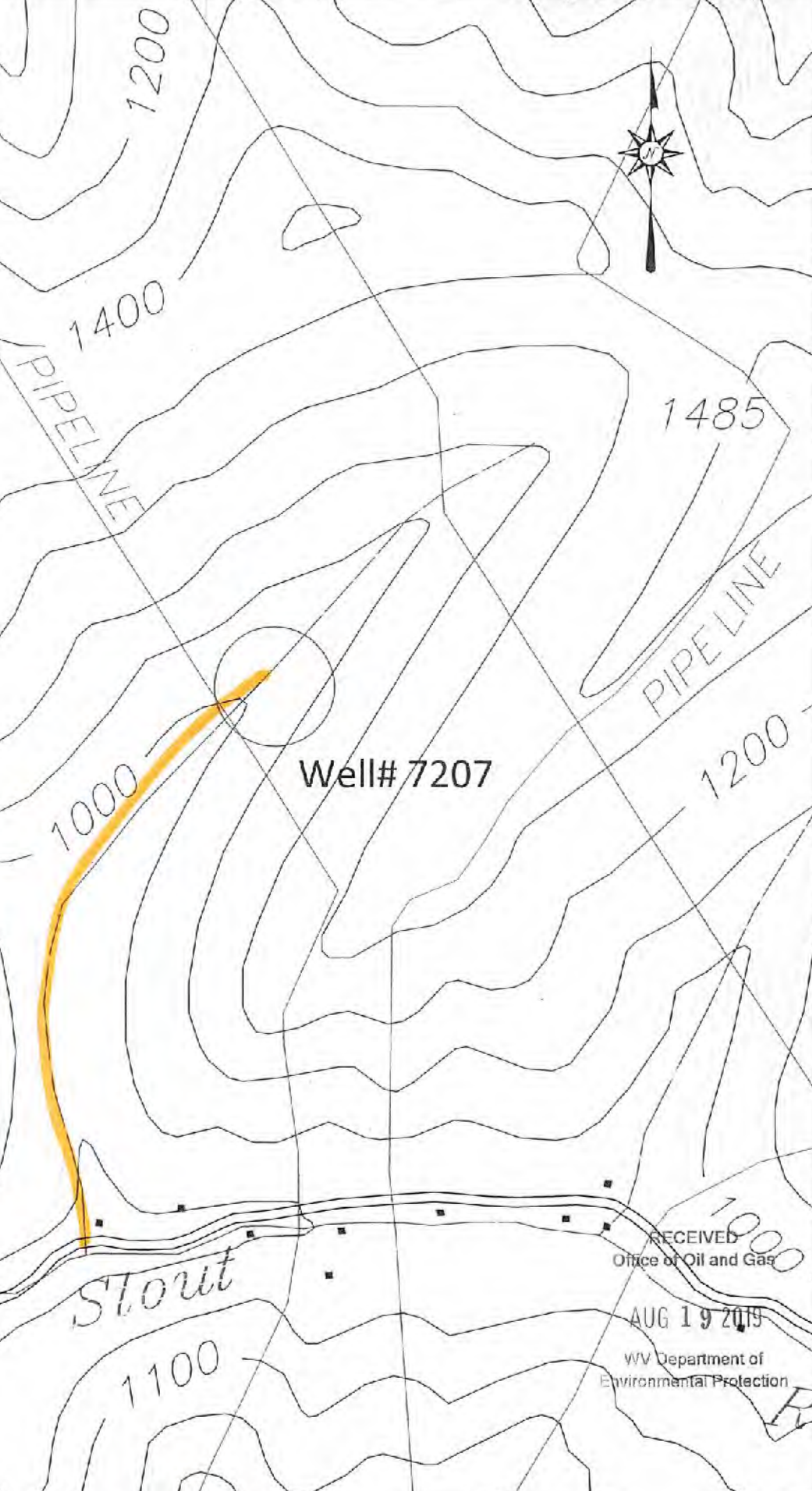
Well# 7207
FOLSOM WV 7.5' Quad
Scale: 1" = 2000'



RECEIVED
Office of Oil and Gas
AUG 19 2019
WV Department of
Environmental Protection

Assoc D-1

Well# 7207
FOLSOM WV 7.5' Quad
Scale: 1" = 500'




Well# 7207

Stout

RECEIVED
Office of Oil and Gas

AUG 19 2019

WV Department of
Environmental Protection

 Access Road

368