

WW-7  
8-30-06



West Virginia Department of Environmental Protection  
Office of Oil and Gas  
**WELL LOCATION FORM: GPS**

API: 47-103-70968 WELL NO.: 7208

FARM NAME: P. EDGELL HEIRS

RESPONSIBLE PARTY NAME: CONSOLIDATION COAL COMPANY

COUNTY: WETZEL DISTRICT: GRANT

QUADRANGLE: FOLSOM WV 7.5'

SURFACE OWNER: SHELIA JEAN & JOHN CHARLES TEDROW

ROYALTY OWNER: \_\_\_\_\_

UTM GPS NORTHING: 4,371,725 m

UTM GPS EASTING: 539,479 m GPS ELEVATION: 301 m

The Responsible Party named above has chosen to submit GPS coordinates in lieu of preparing a new well location plat for a plugging permit or assigned API number on the above well. The Office of Oil and Gas will not accept GPS coordinates that do not meet the following requirements:

- Datum: NAD 1983, Zone: 17 North, Coordinate Units: meters, Altitude: height above mean sea level (MSL) – meters.
- Accuracy to Datum – 3.05 meters
- Data Collection Method:

Survey grade GPS \_\_\_\_\_: Post Processed Differential \_\_\_\_\_

Real-Time Differential \_\_\_\_\_

Mapping Grade GPS X: Post Processed Differential X

Real-Time Differential \_\_\_\_\_

- Letter size copy of the topography map showing the well location.**

I the undersigned, hereby certify this data is correct to the best of my knowledge and belief and shows all the information required by law and the regulations issued and prescribed by the Office of Oil and Gas.

Signature

Professional Surveyor

Title

JUNE 25, 2019

Date

RECEIVED  
Office of Oil and Gas

AUG 22 2019

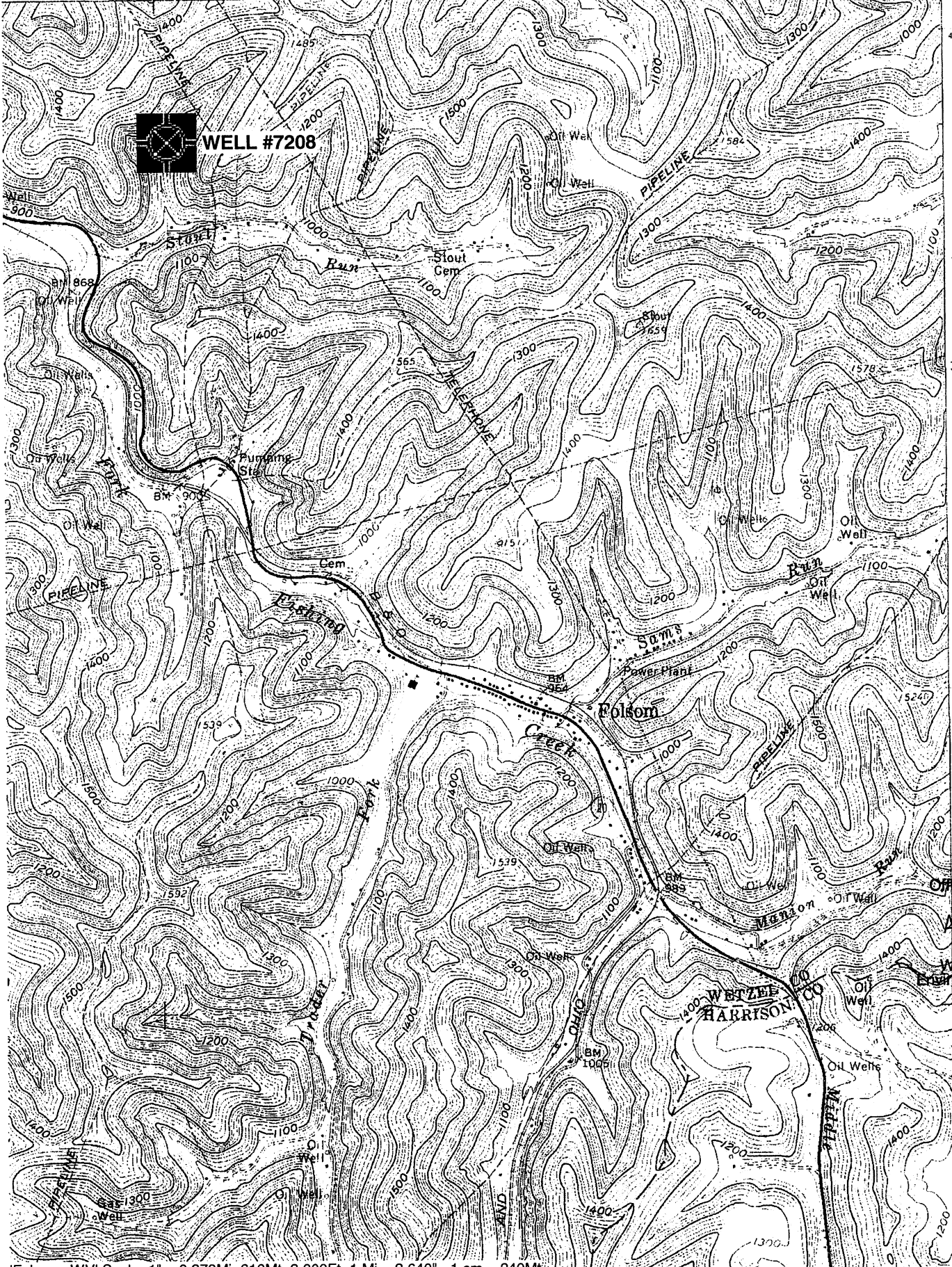
WV Department of  
Environmental Protection

4710303327F

FOLSOM QUADRANGLE  
WEST VIRGINIA  
7.5 MINUTE SERIES (TOPOGRAPHIC)  
NE/4 CENTER POINT 15' QUADRANGLE

1963 III SW  
(GLOVER GAP)

'39 32'30" '40 1 710 000 FEET '42 80° 30' 39° 30'



4372  
4371  
360 000  
FEET  
370  
4169

RECEIVED  
Office of Oil and Gas

AUG 22 2019

WV Department of  
Environmental Protection

27'30"

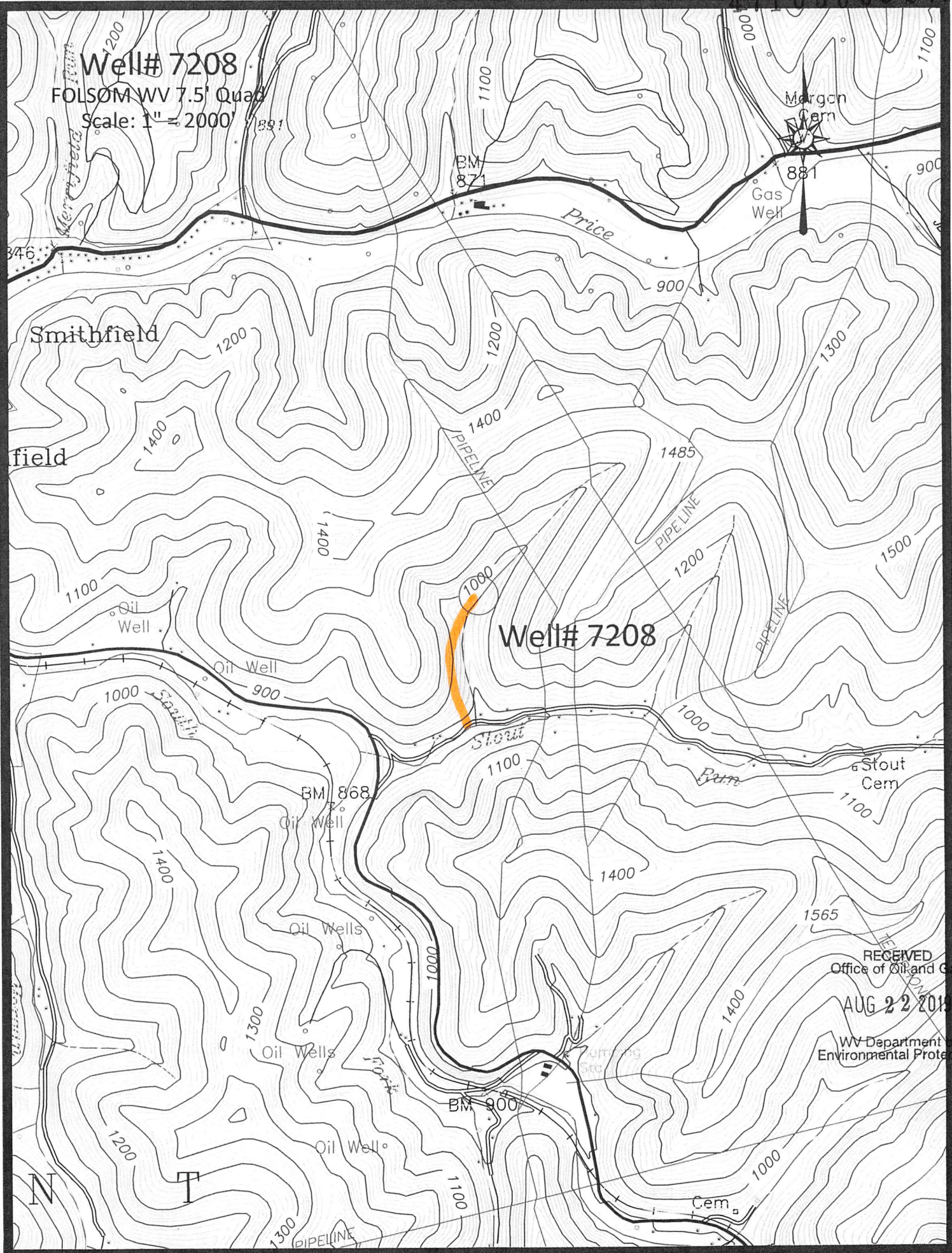
4367

'Folsom; WV' Scale: 1" = 0.379Mi 610Mt 2,000Ft, 1 Mi = 2.640", 1 cm = 240Mt

Well# 7208

FOLSOM WV 7.5' Quad

Scale: 1" = 2000'



RECEIVED  
 Office of Oil and Gas  
 AUG 22 2014  
 WV Department of  
 Environmental Protection

Access Road

Well# 7208  
FOLSOM WV 7.5' Quad  
Scale: 1" = 500'



1400  
PIPELINE

1400

1000

Well# 7208

Stout

1100

RECEIVED  
Office of Oil and Gas

AUG 22 2019

WV Department of  
Environmental Protection

BM 868

Well

Access Road