

WW-7
8-30-06



West Virginia Department of Environmental Protection
Office of Oil and Gas

WELL LOCATION FORM: GPS

API: 47-103-70673 WELL NO.: 6389A

FARM NAME: CHAS SNODGRASS

RESPONSIBLE PARTY NAME: CONSOLIDATION COAL COMPANY

COUNTY: WETZEL DISTRICT: GRANT

QUADRANGLE: GLOVER GAP, WV 7.5'

SURFACE OWNER: WILLIAM J. ROHRIG ET. AL

ROYALTY OWNER: _____

UTM GPS NORTHING: 4,372,475 m (1200,5')

UTM GPS EASTING: 543,958 m GPS ELEVATION: 366 m

The Responsible Party named above has chosen to submit GPS coordinates in lieu of preparing a new well location plat for a plugging permit or assigned API number on the above well. The Office of Oil and Gas will not accept GPS coordinates that do not meet the following requirements:

1. Datum: NAD 1983, Zone: 17 North, Coordinate Units: meters, Altitude: height above mean sea level (MSL) – meters.
2. Accuracy to Datum – 3.05 meters
3. Data Collection Method:

Survey grade GPS _____ : Post Processed Differential _____

Real-Time Differential _____

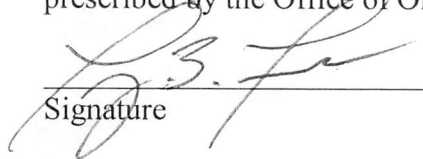
Mapping Grade GPS X : Post Processed Differential X

Real-Time Differential _____

RECEIVED
Office of Oil and Gas

4. **Letter size copy of the topography map showing the well location.** AUG 19 2019

I the undersigned, hereby certify this data is correct to the best of my knowledge and belief and shows all the information required by law and the regulations issued and prescribed by the Office of Oil and Gas.

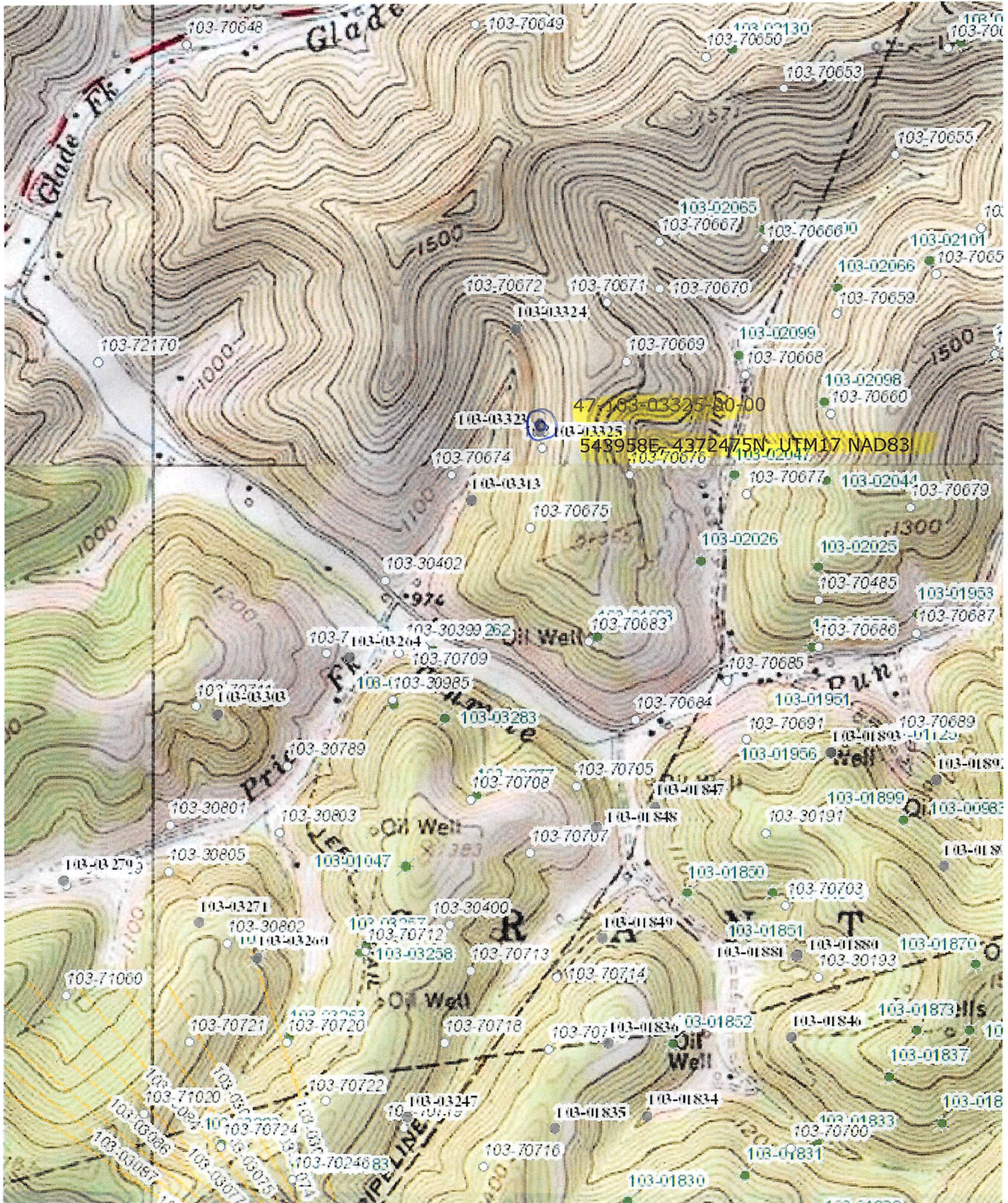

Signature

Professional Surveyor
Title

MAY 31, 2019
Date

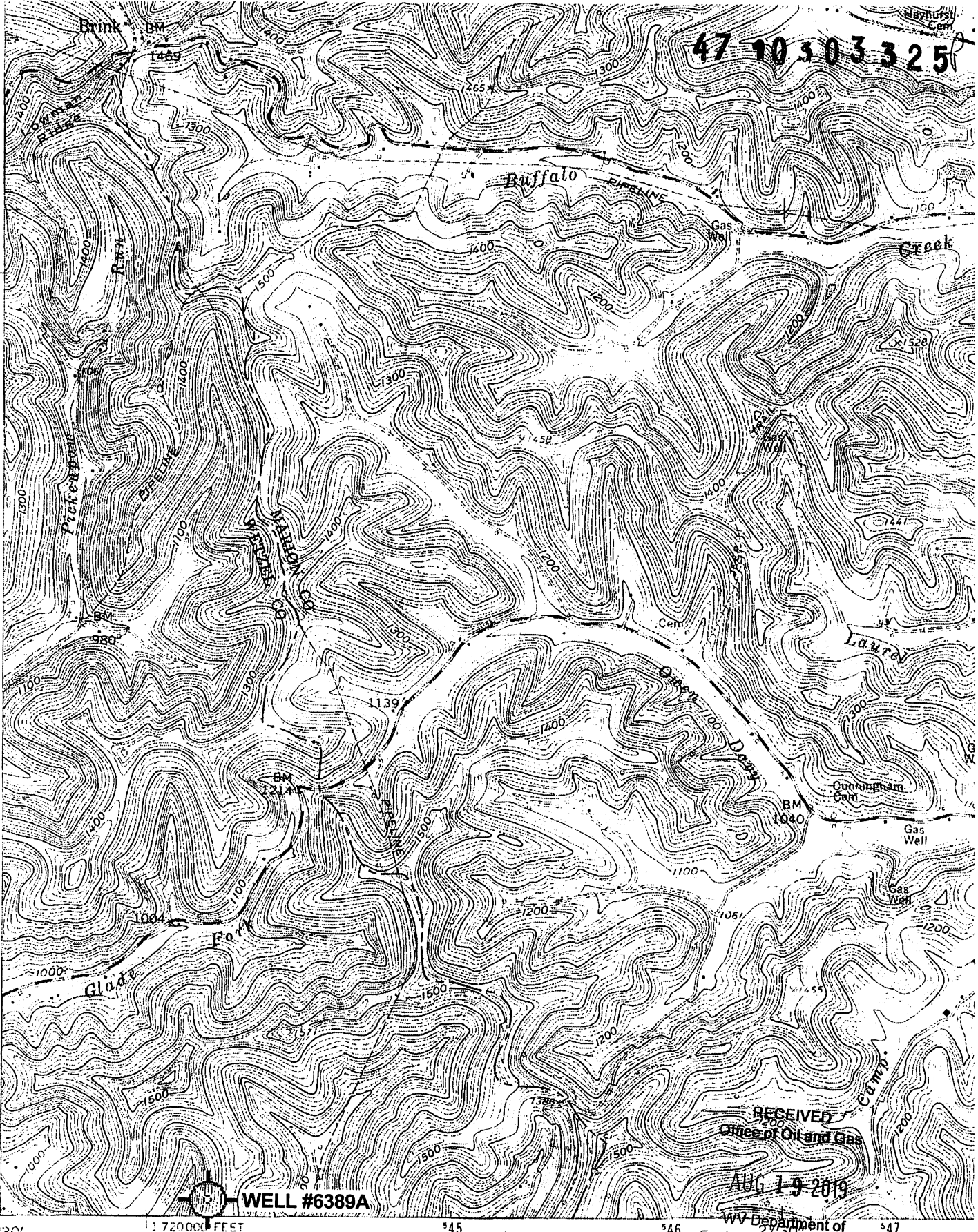
WV Department of Environmental Protection

47 10303325P



47 10 30 3 25

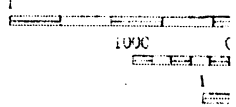
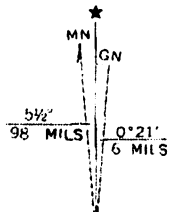
4377
32'30"
4376
4375
4374
370000
FEET
39°30'
80°30'



WELL #6389A

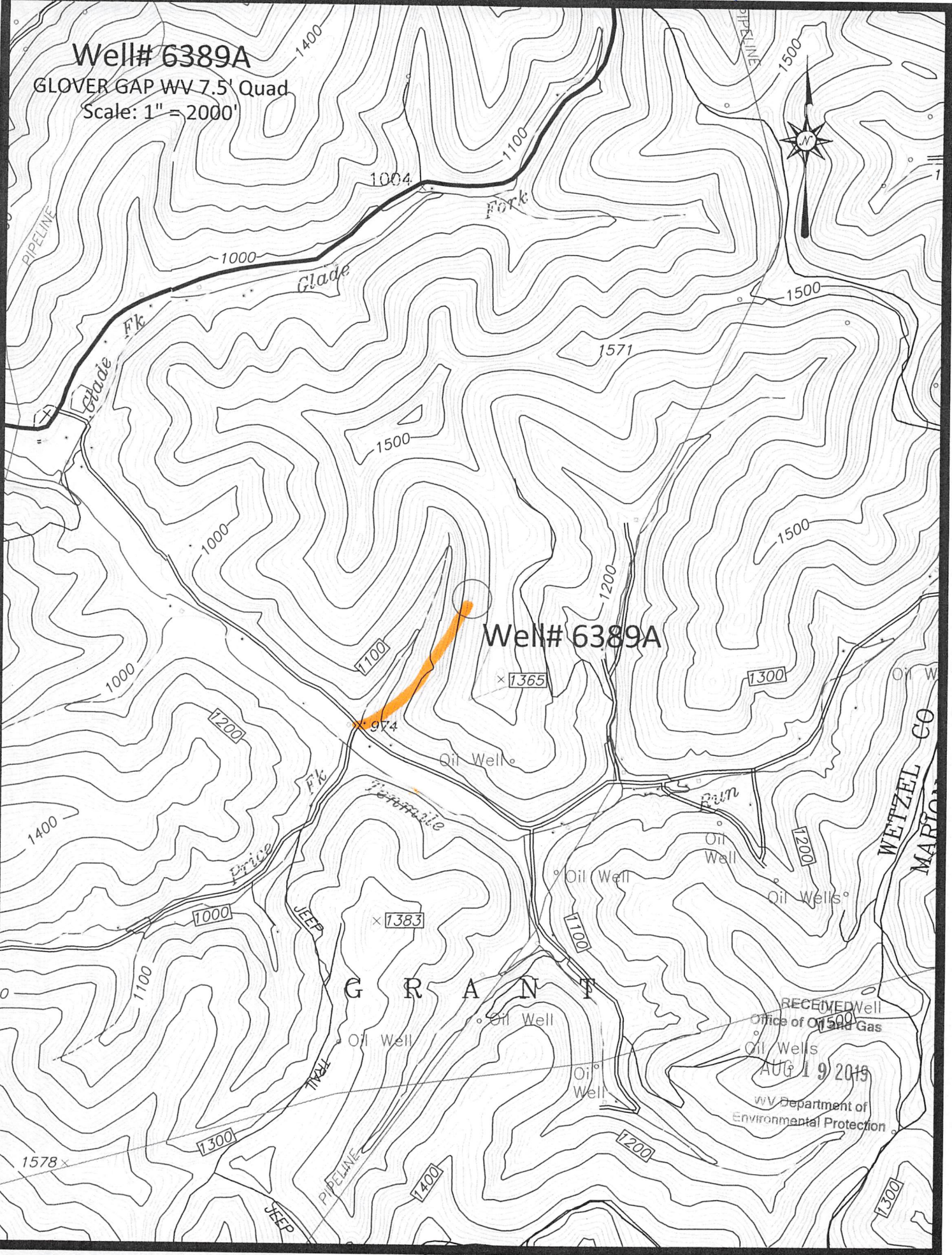
RECEIVED
Office of Oil and Gas
AUG 19 2019
WV Department of
Environmental Protection

Mapped, edited, and published by the Geological Survey
Control by USGS and USC&GS
Topography from aerial photographs by photogrammetric methods
Aerial photographs taken 1957. Field check 1960
Polyconic projection. 1927 North American datum
10,000-foot grid based on West Virginia coordinate system,
north zone
'Glover Gap; WV' Scale: 1" = 0.379Mi 610Mt 2,000Ft, 1 Mi = 2.640", 1 cm = 240Mt



(FOL SOM)
4892 / NE


Well# 6389A
GLOVER GAP WV 7.5' Quad
Scale: 1" = 2000'



Well# 6389A

WETZEL CO
MARION

RECEIVED
Office of Oil and Gas
Oil Wells
AUG 19 2019
WV Department of
Environmental Protection

 Access Road

Well# 6389A
GLOVER GAP WV 7.5' Quad
Scale: 1" = 500'



1500

1200

1100

Well# 6389A

1365

974

Oil Well

RECEIVED
Office of Oil and Gas

AUG 19 2018

WV Department of
Environmental Protection

Fk

Tennile

Access Road

