

47-103-033209

WW-7  
8-30-06



West Virginia Department of Environmental Protection  
Office of Oil and Gas

**WELL LOCATION FORM: GPS**

API: 47-103-71348 WELL NO.: 4601

FARM NAME: HENRY WHISTLER HRS.

RESPONSIBLE PARTY NAME: CONSOLIDATION COAL COMPANY

COUNTY: WETZEL DISTRICT: CHURCH

QUADRANGLE: HUNDRED WV, PA 7.5'

SURFACE OWNER: ENVIRO CON LTD. & ESTHER H. GOLDEN L/E (C/O ESTHER H. CLARK)

ROYALTY OWNER: \_\_\_\_\_

UTM GPS NORTHING: 4,388,859 m (1199.74')

UTM GPS EASTING: 551,645 m GPS ELEVATION: 366 m

The Responsible Party named above has chosen to submit GPS coordinates in lieu of preparing a new well location plat for a plugging permit or assigned API number on the above well. The Office of Oil and Gas will not accept GPS coordinates that do not meet the following requirements:

1. Datum: NAD 1983, Zone: 17 North, Coordinate Units: meters, Altitude: height above mean sea level (MSL) – meters.
2. Accuracy to Datum – 3.05 meters
3. Data Collection Method:

Survey grade GPS  : Post Processed Differential

Real-Time Differential

Mapping Grade GPS  : Post Processed Differential

Real-Time Differential

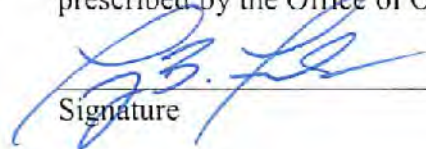
RECEIVED  
Office of Oil and Gas

JUN 03 2019

WV Department of  
Environmental Protection

4. **Letter size copy of the topography map showing the well location.**

I the undersigned, hereby certify this data is correct to the best of my knowledge and belief and shows all the information required by law and the regulations issued and prescribed by the Office of Oil and Gas.

  
Signature

Professional Surveyor

Title

MAY 27, 2019

Date



47-103-03320F



# WVGES - Oil and Gas Wells of West Virginia

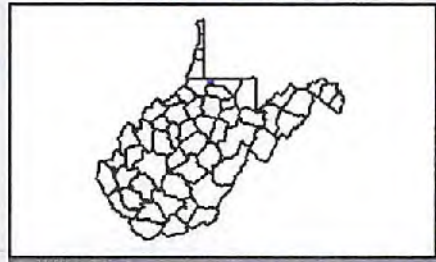
Refresh Map  Auto Refresh



WVGES Home Page Other WVGES IMS Maps Interactive Map Help Map F.A.Q.s  
"Pipeline" "Pipeline-Plus" Disclaimer  
Remember to allow popups and javascripts for this site

### LAYERS

- All Layers
- Gas and Oil Data
  - Gas and Oil Wells
- OG Misc Layers
- Well Type Groupings
  - Combination Wells
  - Gas Wells
  - Oil Wells
- Base Layers



Refresh Map  Auto Refresh

### Help:

- A closed group, click to open.
- An open group, click to close.
- A map layer.
- A hidden group/layer, click to make visible.
- A visible group/layer, click to hide.
- A visible layer, but not at this scale.
- A partially visible group, click to make visible.
- An inactive layer, click to make active.
- The active layer.
- The layer is hyperlinked to further information.

### Gas and Oil Well Legend:

- Gas Well
- Oil Well
- Combination (Oil and Gas) Well
- Dry Well
- Service Well
- Other Well (including Permits)



RECEIVED  
Office of Oil and Gas  
JUN 05 2010  
West Virginia Department of Environmental Protection

Monongalia  
Battelle District

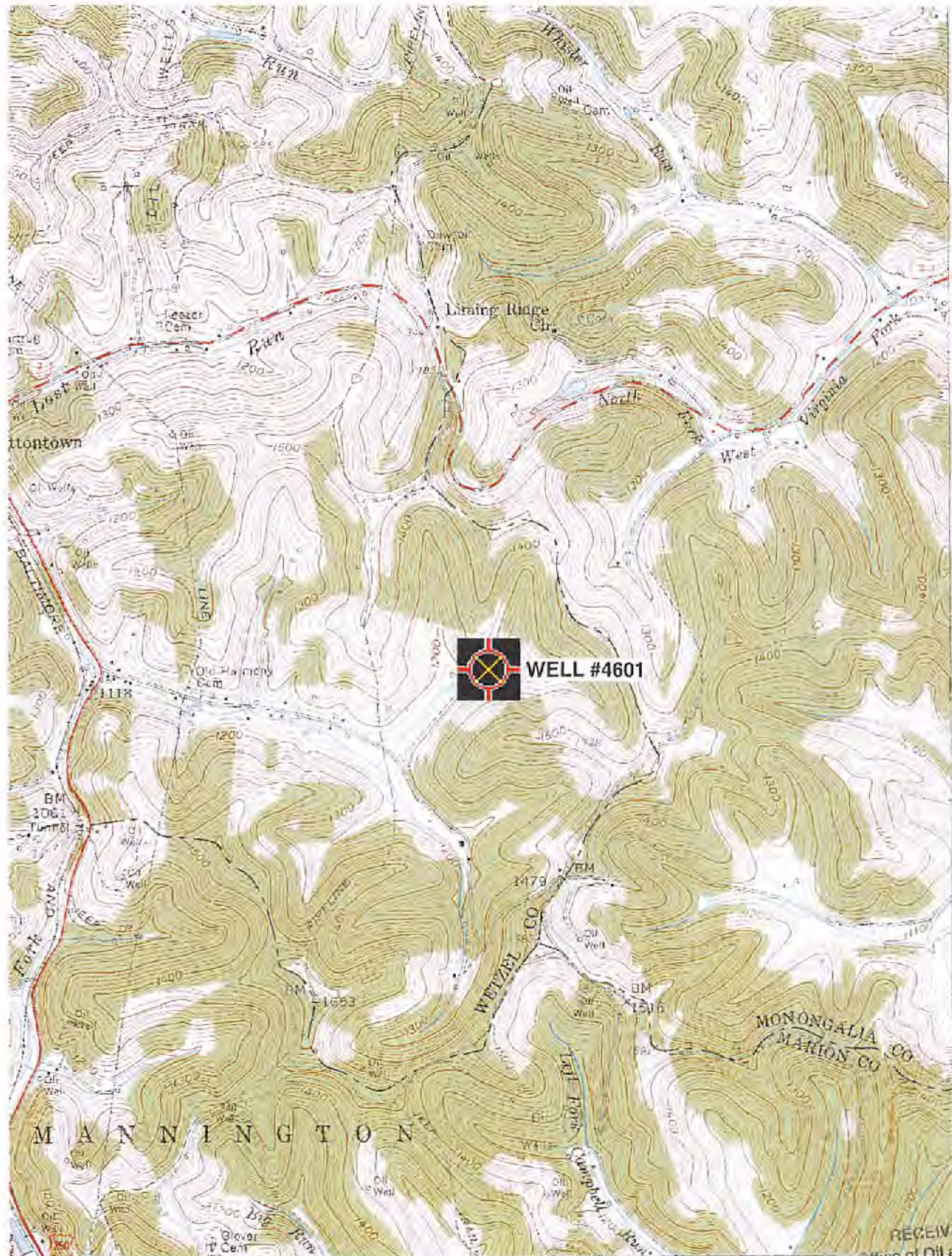
Glouch District  
Welzel

... Pan ...





47-103-03320P



 **WELL #4601**

5 MI  
3 MI

1 MILE  
1 FEET

FR

'Hundred; WV, PA' Scale: 1" = 0.379Mi 610Mt 2,000Ft, 1 Mi = 2.640" , 1 cm = 240Mt

ROAD CLASSIFICATION

Heavy-duty ——— Light-duty ———  
Medium-duty - - - - - Unimproved dirt

U.S. Route State Route

RECEIVED  
Office of Oil and Gas  
80°22'30"

JUN 03 2019  
WV Department of  
Environmental Protection

HUNDRED, W. VA. — PA.  
NW 1/4 MANNINGTON 16' QUADRANGLE