

WW-7
8-30-06



West Virginia Department of Environmental Protection
Office of Oil and Gas

WELL LOCATION FORM: GPS

API: 47-103-03317 WELL NO.: 8352

FARM NAME: SARAH ANN MCFARLAND

RESPONSIBLE PARTY NAME: CONSOLIDATION COAL COMPANY

COUNTY: WETZEL DISTRICT: CHURCH

QUADRANGLE: HUNDRED WV, PA 7.5'

SURFACE OWNER: ERIC YOST

ROYALTY OWNER: _____

UTM GPS NORTHING: 4,387,950 m

UTM GPS EASTING: 551,586 m GPS ELEVATION: 399 m (1309')

The Responsible Party named above has chosen to submit GPS coordinates in lieu of preparing a new well location plat for a plugging permit or assigned API number on the above well. The Office of Oil and Gas will not accept GPS coordinates that do not meet the following requirements:

1. Datum: NAD 1983, Zone: 17 North, Coordinate Units: meters, Altitude: height above mean sea level (MSL) – meters.
2. Accuracy to Datum – 3.05 meters
3. Data Collection Method:

Survey grade GPS ____: Post Processed Differential ____

Real-Time Differential ____

Mapping Grade GPS X: Post Processed Differential X

Real-Time Differential ____

4. **Letter size copy of the topography map showing the well location.**

I the undersigned, hereby certify this data is correct to the best of my knowledge and belief and shows all the information required by law and the regulations issued and prescribed by the Office of Oil and Gas.

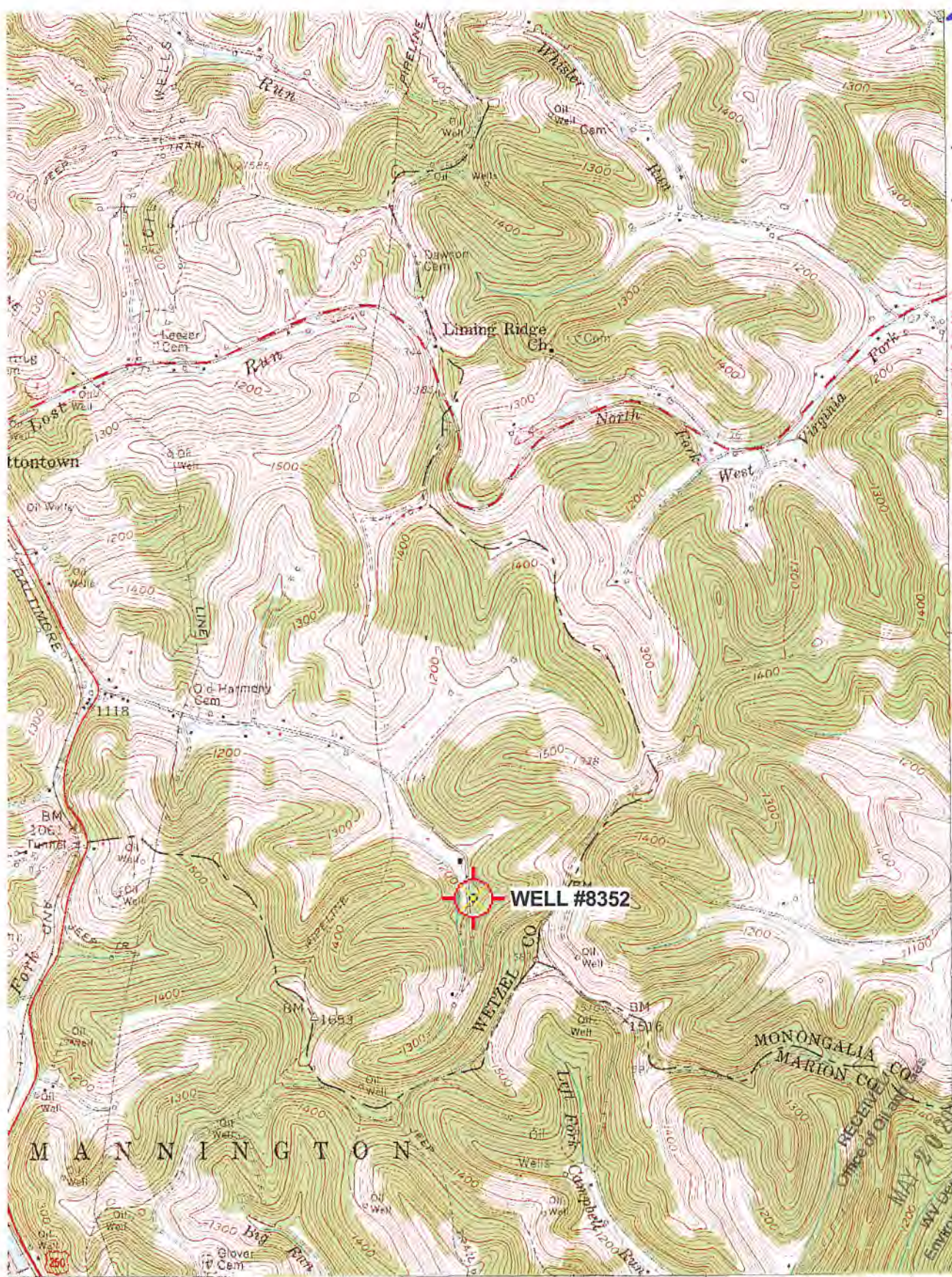
[Signature]
Signature

Professional Surveyor
Title

MAY 9, 2019
Date

RECEIVED
Office of Oil and Gas
MAY 20 2019
WV Department of
Environmental Protection

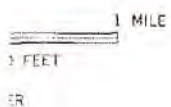
47-103-03317P



4991
40'
4289
4388
120 000 FEET (PA.)
39°37'30"
80°22'30"

3 MI. 25' 1:250 000 FEET (PA.) 51

52 553 000 ME



ROAD CLASSIFICATION

Heavy-duty		Light-duty	
Medium-duty		Unimproved dirt	
U.S. Route		State Route	



'Hundred; WV,PA' Scale: 1" = 0.379Mi 610Mt 2,000Ft, 1 Mi = 2.640" , 1 cm = 240Mt

HUNDRED, W. VA. — PA.

MONONGALIA
MARION CO
RESERVE CO
Office of Oil and Gas
MAY 20 2019
WV Department of Environmental Protection

(MANNINGTON)
283 III SE

47-103-03317



WVGES - Oil and Gas Wells of West Virginia

Refresh Map Auto Refresh



WVGES Home Page Other WVGES IMS Maps Interactive Map Help Map F.A.Q.s
"Pipeline" "Pipeline-Plus" Disclaimer
Remember to allow popups and javascripts for this site.

LAYERS

- All Layers
- Gas and Oil Data
- Gas and Oil Wells
- OG Misc Layers
- Well Type Groupings
 - Combination Wells
 - Gas Wells
 - Oil Wells
- Base Layers



Refresh Map Auto Refresh

Help:

- A closed group, click to open.
- An open group, click to close.
- A map layer.
- A hidden group/layer, click to make visible.
- A visible group/layer, click to hide.
- A visible layer, but not at this scale.
- A partially visible group, click to make visible.
- An inactive layer, click to make active.
- The active layer.
- The layer is hyperlinked to further information.

Gas and Oil Well Legend:

- Gas Well
- Oil Well
- Combination (Oil and Gas) Well
- Dry Well
- Service Well
- Other Well (including Permits)



RECEIVED
Office of Oil and Gas
MAY 20 2019
West Virginia Department of Environmental Protection

... Pan ...

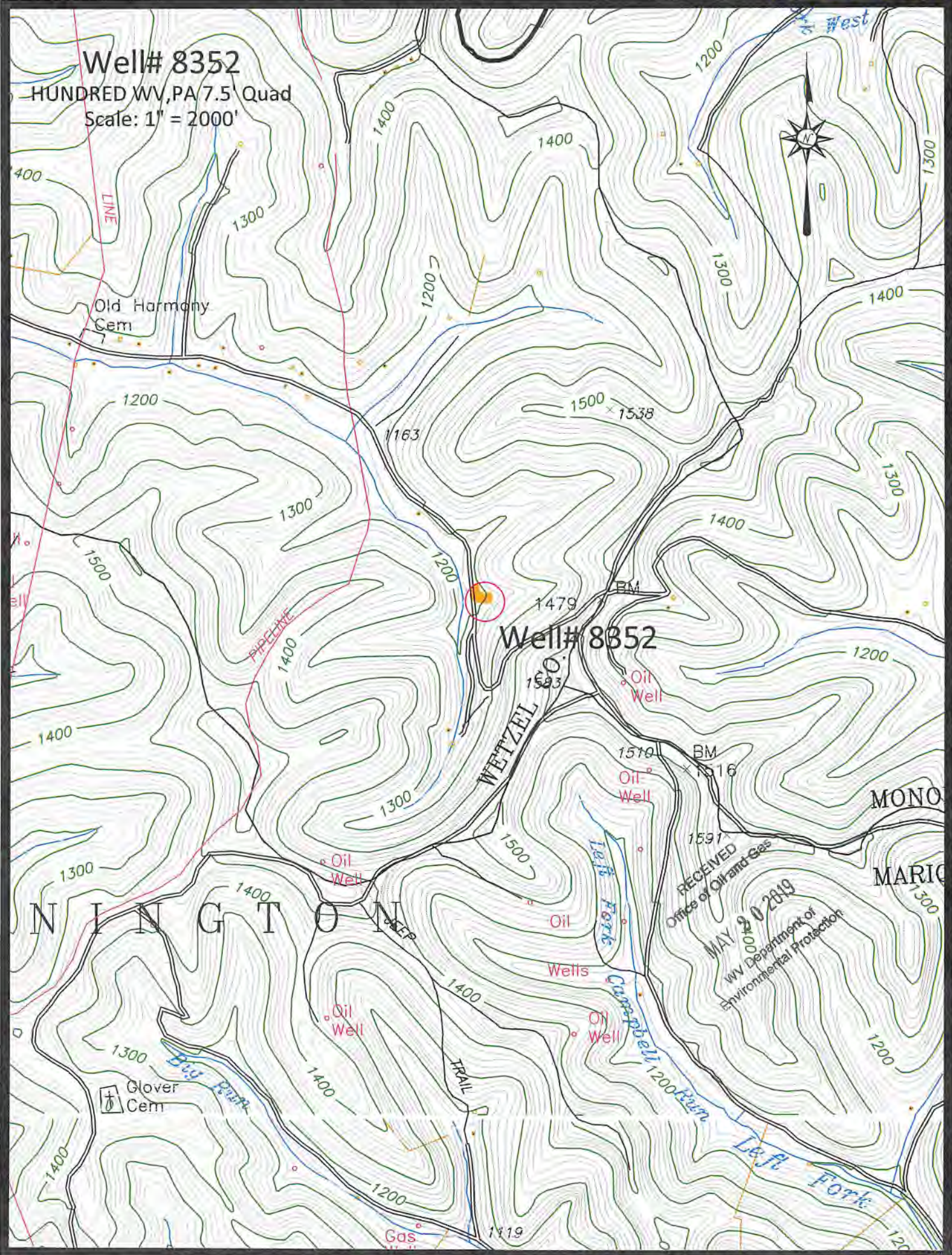
WVGES

33 0

Well# 8352

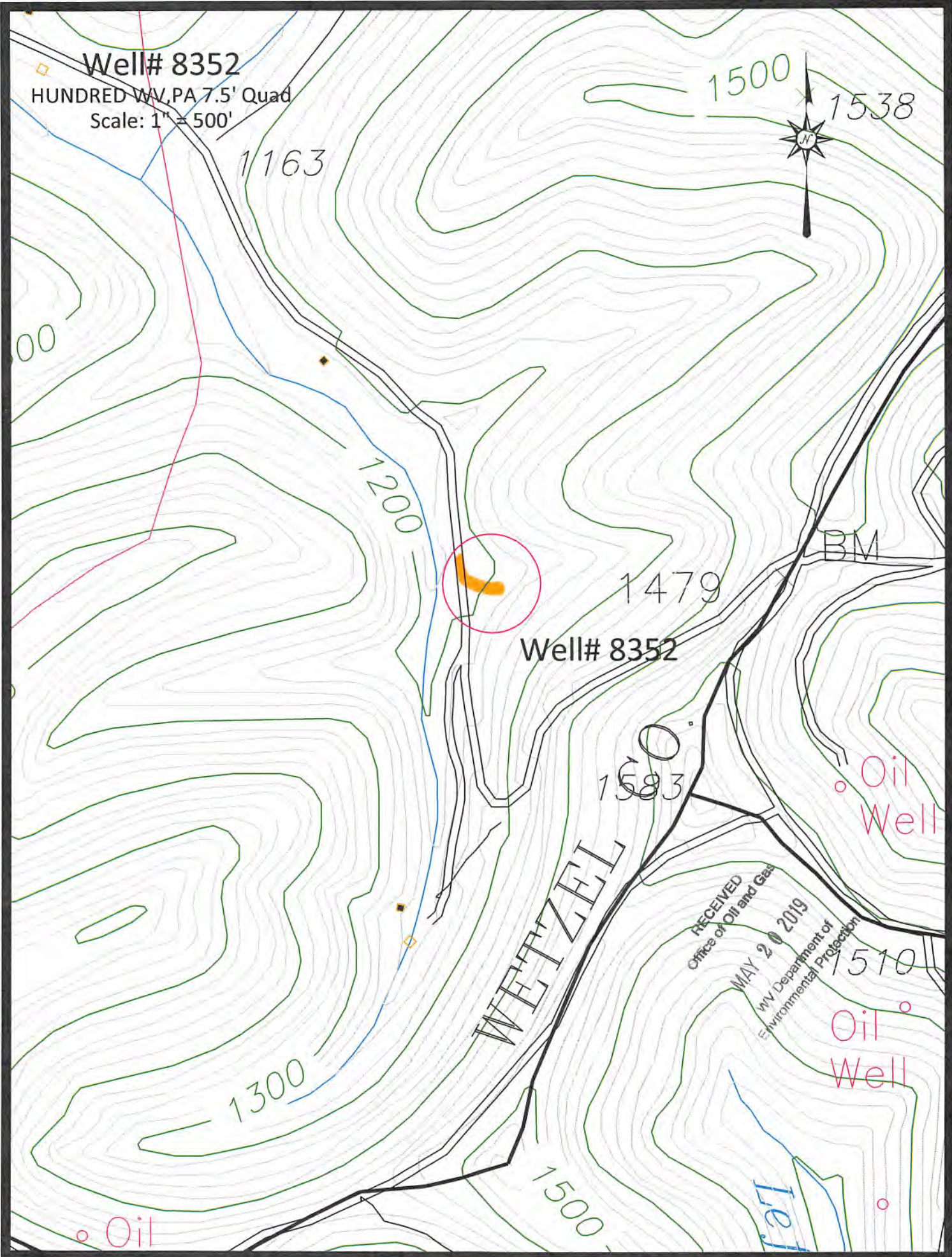
HUNDRED WV, PA 7.5 Quad

Scale: 1" = 2000'



RECEIVED
 Office of Oil and Gas
 MAY 20 2019
 WV Department of
 Environmental Protection

Access Road ■



Well# 8352
 HUNDRED WV, PA 7.5' Quad
 Scale: 1" = 500'

Well# 8352

RECEIVED
 Office of Oil and Gas
 MAY 20 2019
 WV Department of
 Environmental Protection

Access Road