

47 10 303314 P

WW-7
8-30-06



West Virginia Department of Environmental Protection
Office of Oil and Gas

WELL LOCATION FORM: GPS

API: 47-103-30520 WELL NO.: 6725

FARM NAME: GENINE ROBINSON

RESPONSIBLE PARTY NAME: CONSOLIDATION COAL COMPANY

COUNTY: WETZEL DISTRICT: GRANT

QUADRANGLE: FOLSOM WV 7.5'

SURFACE OWNER: LARRY HOOD

ROYALTY OWNER: _____

UTM GPS NORTHING: 4,370,379 m

UTM GPS EASTING: 542,872 m GPS ELEVATION: 414 m

The Responsible Party named above has chosen to submit GPS coordinates in lieu of preparing a new well location plat for a plugging permit or assigned API number on the above well. The Office of Oil and Gas will not accept GPS coordinates that do not meet the following requirements:

1. Datum: NAD 1983, Zone: 17 North, Coordinate Units: meters, Altitude: height above mean sea level (MSL) – meters.
2. Accuracy to Datum – 3.05 meters
3. Data Collection Method:

Survey grade GPS _____ : Post Processed Differential _____

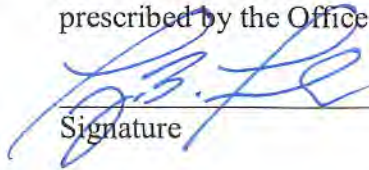
Real-Time Differential _____

Mapping Grade GPS X : Post Processed Differential X

Real-Time Differential _____

4. Letter size copy of the topography map showing the well location.

I the undersigned, hereby certify this data is correct to the best of my knowledge and belief and shows all the information required by law and the regulations issued and prescribed by the Office of Oil and Gas.


Signature

Professional Surveyor
Title

APRIL 23, 2019
Date

RECEIVED
Office of Oil and Gas
MAY 1 2019
WV Department of
Environmental Protection

47 10 3033 14 P



WVGES - Oil and Gas Wells of West Virginia

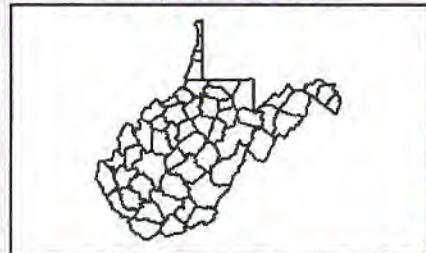
Refresh Map Auto Refresh



WVGES Home Page Other WVGES IMS Maps Interactive Map Help Map F.A.Q.s
"Pipeline" "Pipeline-Plus" Disclaimer
Remember to allow popups and javascripts for this site.

LAYERS

- All Layers
- Gas and Oil Data
 - Gas and Oil Wells
- OG Misc Layers
- Well Type Groupings
 - Combination Wells
 - Gas Wells
 - Oil Wells
- Base Layers



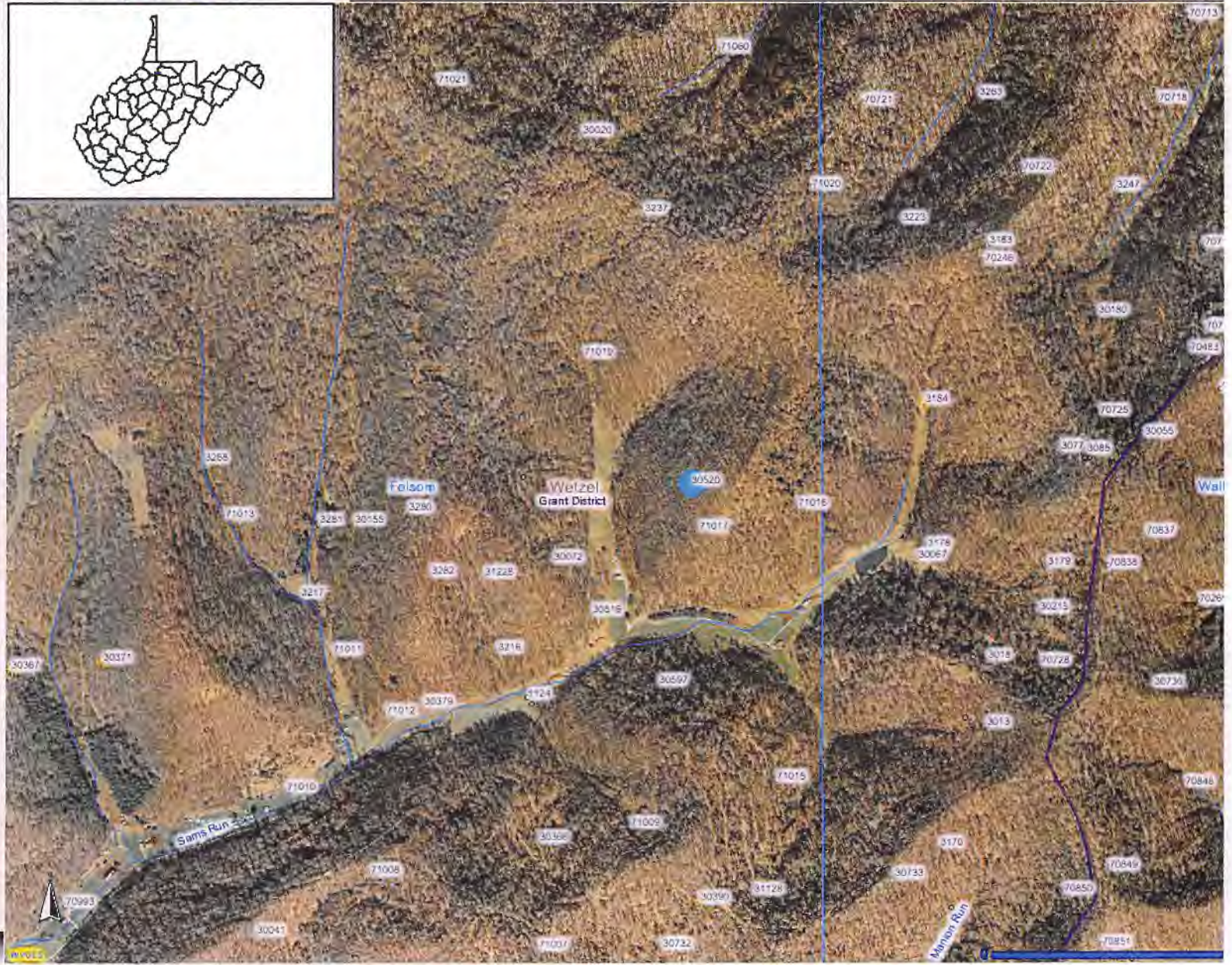
Refresh Map Auto Refresh

Help:

- A closed group, click to open.
- An open group, click to close.
- A map layer.
- A hidden group/layer, click to make visible.
- A visible group/layer, click to hide.
- A visible layer, but not at this scale.
- A partially visible group, click to make visible.
- An inactive layer, click to make active.
- The active layer.
- The layer is hyperlinked to further information.

Gas and Oil Well Legend:

- Gas Well
- Oil Well
- Combination (Oil and Gas) Well
- Dry Well
- Service Well
- Other Well (including Permits)



Zoom In



47 10 30 33 14 P

FOLSOM QUADRANGLE
WEST VIRGINIA
7.5 MINUTE SERIES (TOPOGRAPHIC)
NE/4 CENTER POINT 15' QUADRANGLE

1963 III SW
(GLOVER GAP)

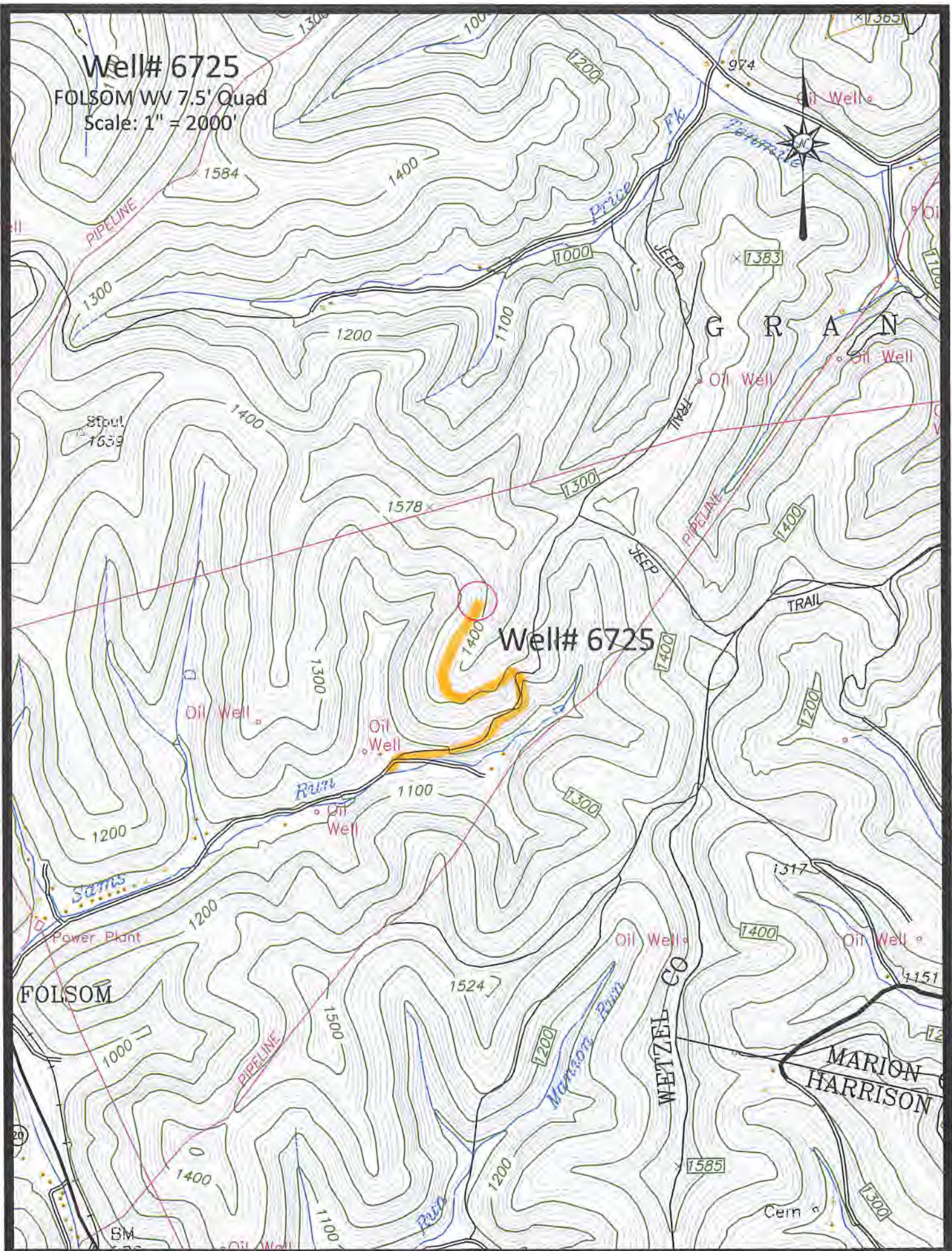
39 32'30" 40 1 710 000 FEET 42 80° 30' 39° 30'



WELL #6725

RECEIVED
Office of Oil and Gas
MAY 1 2019
WV Department of
Environmental Protection

Well# 6725
FOLSOM WV 7.5' Quad
Scale: 1" = 2000'



Well# 6725

FOLSOM

WETZEL CO

MARION HARRISON

G R A N

Well# 6725

EOLSOM WV 7.5' Quad

Scale: 1" = 500'



1578 x

1300

JEEP



Well# 6725

1400

1300

Oil Well

RECEIVED
Office of Oil and Gas

MAY 1 2019

WV Department of
Environmental Protection

Run

Oil Well

1100

1300