

47-103-0331P

WW-7
8-30-06



West Virginia Department of Environmental Protection
Office of Oil and Gas

WELL LOCATION FORM: GPS

API: 47-103-03311 WELL NO.: 7762

FARM NAME: LLOYD F. CAIN

RESPONSIBLE PARTY NAME: CONSOLIDATION COAL COMPANY

COUNTY: WETZEL DISTRICT: GRANT

QUADRANGLE: FOLSOM WV 7.5'

SURFACE OWNER: EVERETT & EDITH HAUGHT

ROYALTY OWNER: _____

UTM GPS NORTHING: 4,370,968 m

UTM GPS EASTING: 541,389 m GPS ELEVATION: 451 m (1479')

The Responsible Party named above has chosen to submit GPS coordinates in lieu of preparing a new well location plat for a plugging permit or assigned API number on the above well. The Office of Oil and Gas will not accept GPS coordinates that do not meet the following requirements:

1. Datum: NAD 1983, Zone: 17 North, Coordinate Units: meters, Altitude: height above mean sea level (MSL) – meters.
2. Accuracy to Datum – 3.05 meters
3. Data Collection Method:

Survey grade GPS _____: Post Processed Differential _____

Real-Time Differential _____

Mapping Grade GPS X: Post Processed Differential X

Real-Time Differential _____

4. **Letter size copy of the topography map showing the well location.**

I the undersigned, hereby certify this data is correct to the best of my knowledge and belief and shows all the information required by law and the regulations issued and prescribed by the Office of Oil and Gas.

[Signature]
Signature

Professional Surveyor
Title

APRIL 12, 2019
Date

RECEIVED
Office of Oil and Gas

APR 18 2019

WV Department of
Environmental Protection

47-103-03311P

FOLSOM QUADRANGLE
WEST VIRGINIA
7.5 MINUTE SERIES (TOPOGRAPHIC)
NE/4 CENTER POINT 15' QUADRANGLE

1853 III SW
(GLOVER GAP)

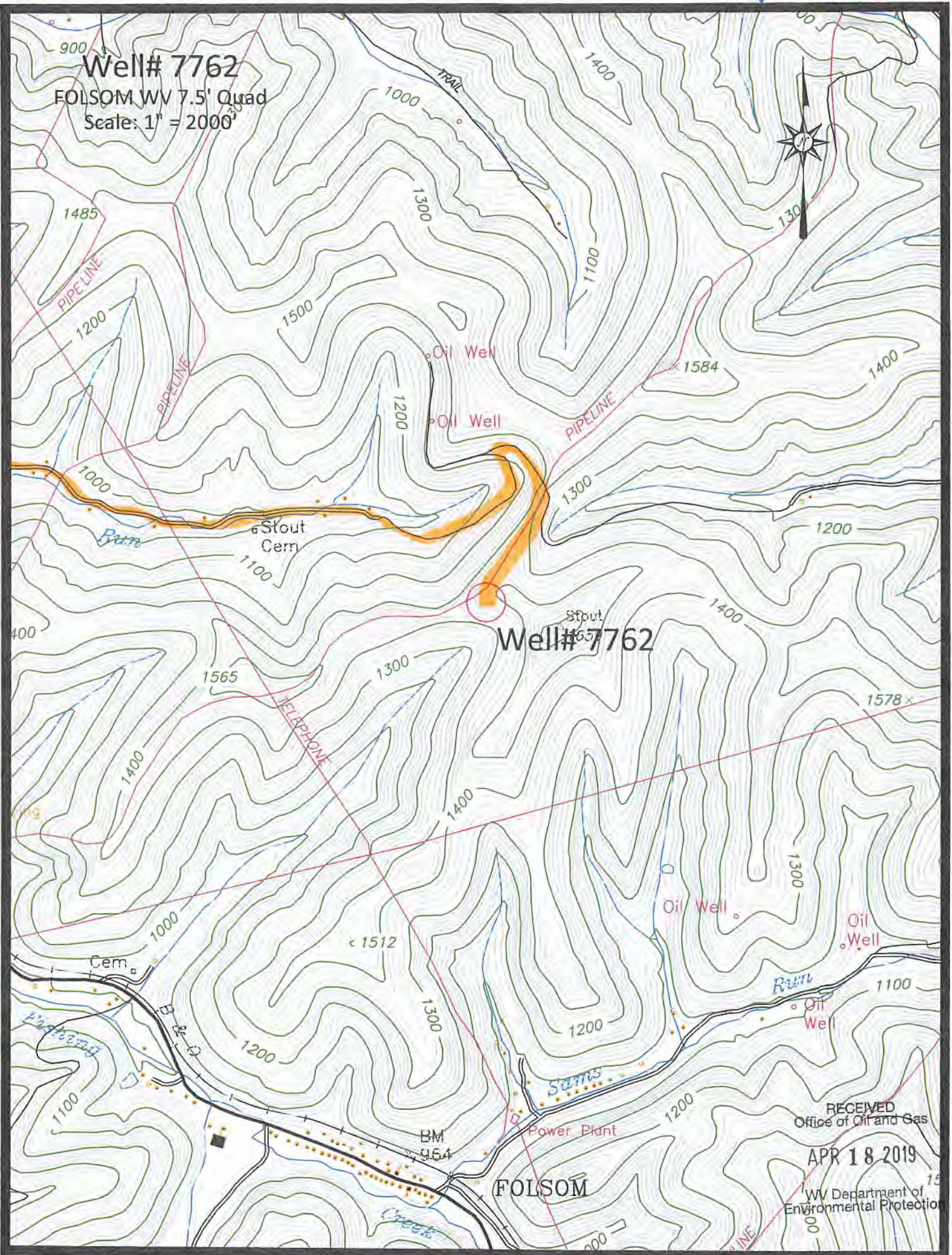
39 32'30" 40 1 710 000 FEET 42 80° 30' 39° 30'



4372
4371
360 000
FEET
4370
4369
4368
4367

RECEIVED
Office of Oil and Gas
APR 18 2019
WV Department of
Environmental Protection

Well# 7762
FOLSOM WV 7.5' Quad
Scale: 1" = 2000'



Well# 7762

RECEIVED
Office of Oil and Gas

APR 18 2019

WV Department of
Environmental Protection

FOLSOM



Well# 7762
FOLSOM WV 7.5' Quad
Scale: 1" = 500'

Oil Well

PIPELINE



ut
n

Stout
Well# 7762 1659

APHONE

RECEIVED
Office of Oil and Gas
APR 18 2019
WV Department of
Environmental Protection

Area 2 1