

**Latitude**

**Longitude**

+

1.43s  
.61w

**Topo Location**

7.5' Loc. \_\_\_\_\_ 15' Loc. \_\_\_\_\_  
\_\_\_\_\_ (calc.) \_\_\_\_\_

**Company** South Penn Oil Co

**Farm** GENINE ROBINSON #38

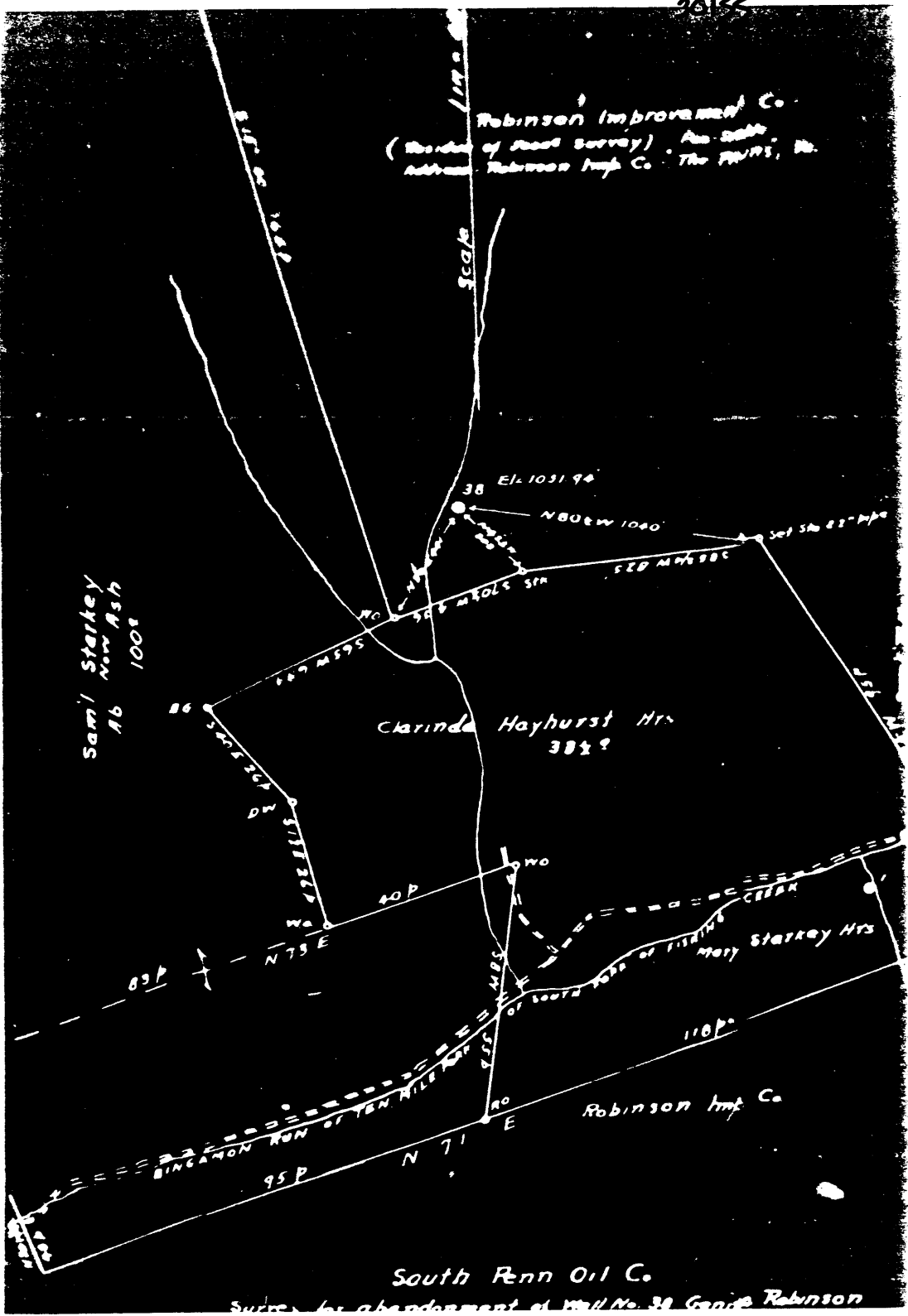
**15' Quad** \_\_\_\_\_  
(sec.)

**7.5' Quad** Folsom

**District** GRANT

**WELL LOCATION PLAT**

**County** 103 **Permit** 30155



Robinson Improvement Co.  
 (Border of Road Survey) No. 38  
 Address Robinson Imp Co. The Falls, Pa.

Saml Starkey  
 NW 1/4 NW 1/4  
 100E

Clarinda Hayhurst Mrs  
 30 1/2 A

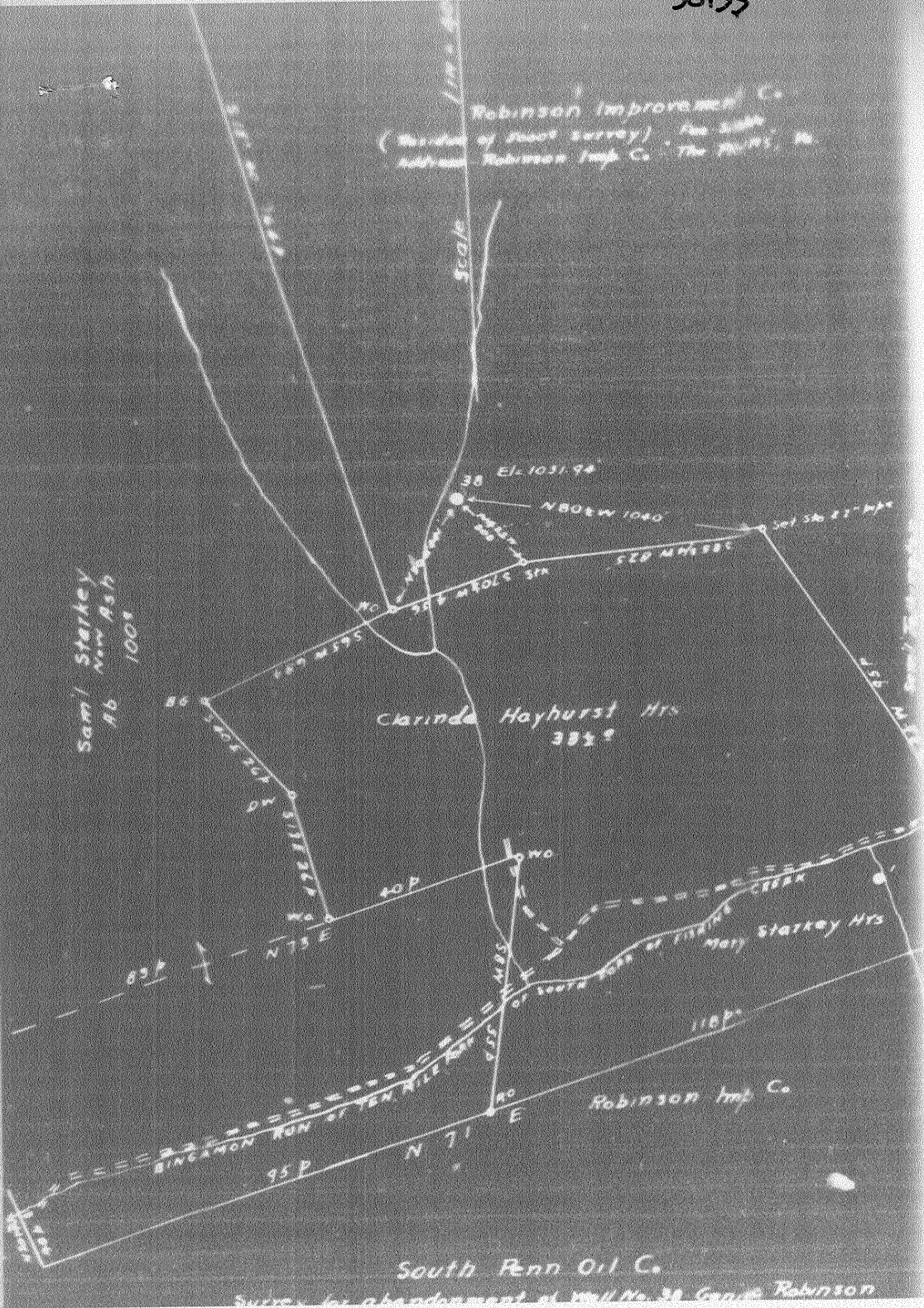
Starkey Mrs  
 100E

Robinson Imp Co

South Penn Oil Co.

Survey by abandonment of Well No. 38 George Robinson

36155



GENINE ROBINSON NO. 38 WELL.

No. 449 O.F.-Wetzel.

WET - 155 = A

Grant District, Wetzel County, W. Va.

By South Penn Oil Co., Chamber of Commerce Bldg., Pittsburgh, Pa.

On 2600 acres, surface and mineral rights owned by Robinson Improvement Co., The Plains, Virginia.

Elevation, 1051.94' L.

16' conductor; 10" casing, 334' (pulled); 8 $\frac{1}{2}$ ", 1405'; 6-5/8", 2319'.

Coal was encountered at 897-905'.

Abandonment reported to Dept. of Mines July 1, 1935.

Well was shot in Gordon Sand, June 7, 1913, with 60 qts.

Oil well.

	Top.	Bottom.
Pittsburgh Coal	897	- 905
Dunkard Sand	1394	- 1422
Salt Sand	1770	- 1925
Pencil Cave	2092	- 2107
Big Lime	2107	- 2177
Big Injun Sand	2177	- 2282
50-Ft. Sand	2754	- 2794
30-Ft. Sand	2860	- 2896
Stray Sand (oil, 2972')	2913	- 2974
Gordon Sand (oil, 3001')	2990	- 3016
Total depth		3058