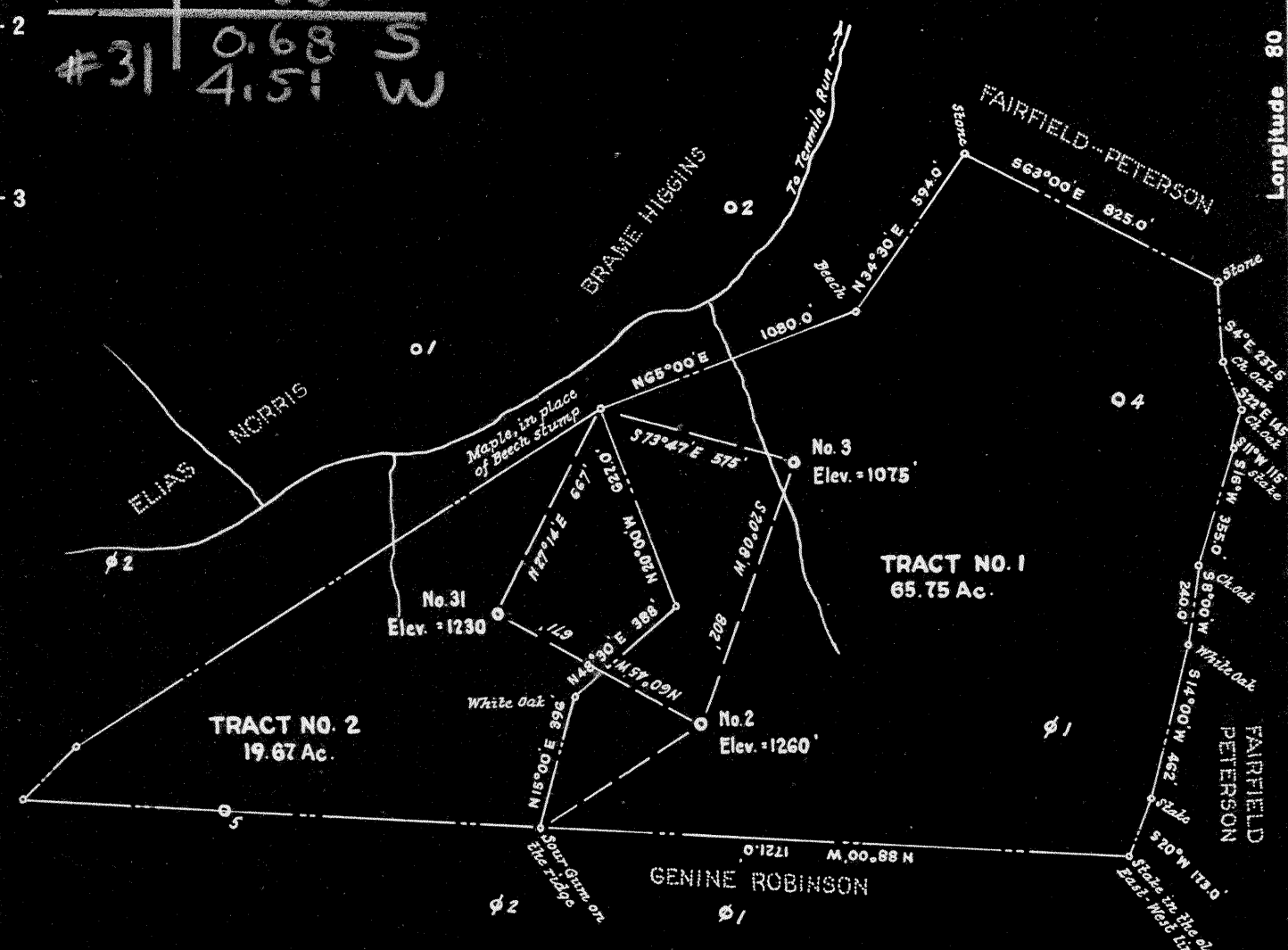


#2	0.76 S	4.41 W
#3	0.60 S	4.33 W
#31	0.68 S	4.51 W



Surface owned by W.T. Price, Smithfield, West Va  
 Coal owned by Pittsburgh-Consolidation Coal Co., Fairmont.

NOTE :- Tract No. 1 is carried on the books of the South Penn Co. as "McIntyre - Peterson, and is that tract conveyed by B. Walker Peterson to Isaac Starkey, by deed of record in the Wetzel County Clerk's Office, in Deed Book 45, at page 582.  
 Tract No. 2 is carried on the South Penn books as "Fairfield - Peterson, and is that tract conveyed by B. Walker Peterson to W. T. Price (Deed Book No. 126, page 207)

New Location   
 Drill Deeper   
 Abandonment

Company SAM BEREN  
 Address Marietta, Ohio.  
 Farm W. T. Price and Isaac Starkey  
 Tract \_\_\_\_\_ Acres 65.75 & 19.67 Lease No. \_\_\_\_\_  
 Well (Farm) No. 2-3-31 Serial No. \_\_\_\_\_  
 Elevation (Spirit Level) No. 2-1260 No. 3-1075 No. 31-1230  
 Quadrangle Clarksburg  
 County Wetzel District Grant  
 Engineer [Signature]  
 Engineer's Registration No. 1227  
 File No. \_\_\_\_\_ Drawing No. \_\_\_\_\_  
 Date Dec., 1948 Scale 1" = 500'

STATE OF WEST VIRGINIA  
 DEPARTMENT OF MINES  
 OIL AND GAS DIVISION  
 CHARLESTON

WELL LOCATION MAP  
 Wet-802-A-#2  
 FILE NO. Wet-803-A-#3  
Wet-805-A-#31

+ Denotes location of well on United States Topographic Maps, scale 1 to 62,500, latitude and longitude lines being represented by border lines as shown.

- Denotes one inch spaces on border line of original tracing.



STATE OF WEST VIRGINIA  
DEPARTMENT OF MINES  
OIL AND GAS DIVISION

1272

WELL RECORD

Permit No. 805-A

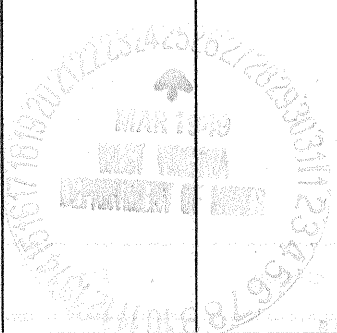
Oil or Gas Well \_\_\_\_\_  
(KIND)

Company Strauss & Beren  
 Address Marietta, Ohio  
 Farm Fairfield-Peterson or Acres 19.67  
 Location (waters) Ten Mile Run  
 Well No. 31 Elev. 1230  
 District Grant County Wetzel  
 The surface of tract is owned in fee by W. T. Price  
 Address Smithfield, W. Va.  
 Mineral rights are owned by Pittsburgh-Consolidation  
Coal Company Address Fairmont, W. Va.  
 Drilling commenced June 17, 1903  
 Drilling completed Aug. 10, 1903  
 Date Shot \_\_\_\_\_ From \_\_\_\_\_ To \_\_\_\_\_  
 With \_\_\_\_\_  
 Open Flow \_\_\_\_\_ /10ths Water in \_\_\_\_\_ Inch  
 \_\_\_\_\_ /10ths Merc. in \_\_\_\_\_ Inch  
 Volume \_\_\_\_\_ Cu. Ft.  
 Rock Pressure \_\_\_\_\_ lbs. \_\_\_\_\_ hrs.  
 Oil \_\_\_\_\_ bbls., 1st 24 hrs.  
 Fresh water \_\_\_\_\_ feet \_\_\_\_\_ feet  
 Salt water \_\_\_\_\_ feet \_\_\_\_\_ feet

Casing and Tubing	Used in Drilling	Left in Well	Packers
Size			Kind of Packer
16			
13			
10	330	None	Size of _____
8 1/4	1650	1650	
6 1/2	2450	2450	Depth set _____
5 3/16			
3			Perf. top _____
2			Perf. bottom _____
Liners Used	813' -	5x5 1/2"	Perf. top _____
			Perf. bottom _____

CASING CEMENTED \_\_\_\_\_ SIZE \_\_\_\_\_ No. Ft. \_\_\_\_\_ Date \_\_\_\_\_  
 COAL WAS ENCOUNTERED AT 1150 FEET \_\_\_\_\_ INCHES  
 \_\_\_\_\_ FEET \_\_\_\_\_ INCHES FEET \_\_\_\_\_ INCHES  
 \_\_\_\_\_ FEET \_\_\_\_\_ INCHES FEET \_\_\_\_\_ INCHES

Formation	Color	Hard or Soft	Top	Bottom	Oil, Gas or Water	Depth Found	Remarks
Pitts. Coal			1150	1158			
Big Injun			2450	2550			
30' Sand			2800	2835			
50' "			3050	3080			
Stray Sand			3180	3240			
Gordon Sand			3250	3273			
TOTAL DEPTH				3293			



MAR 6 1950