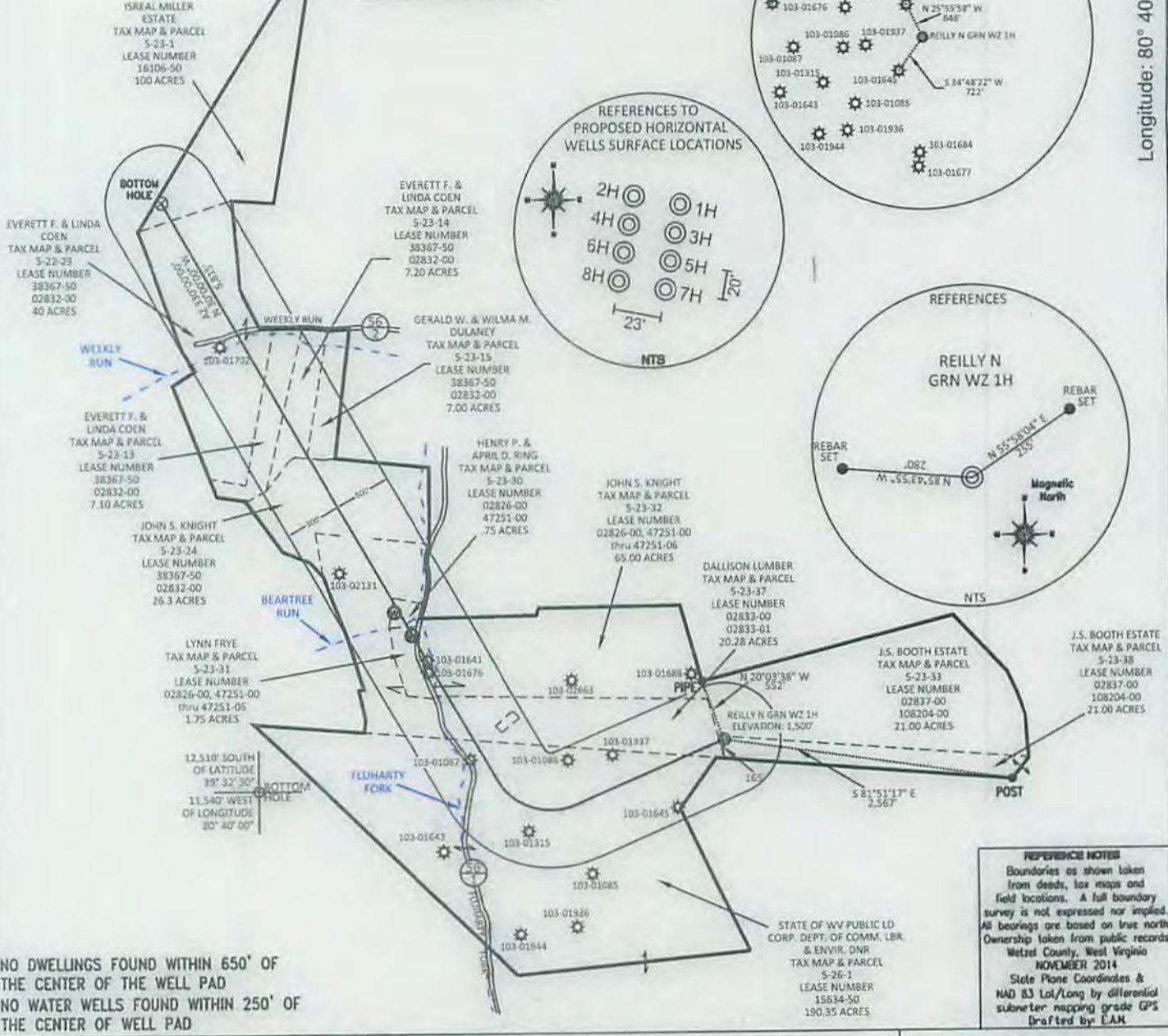
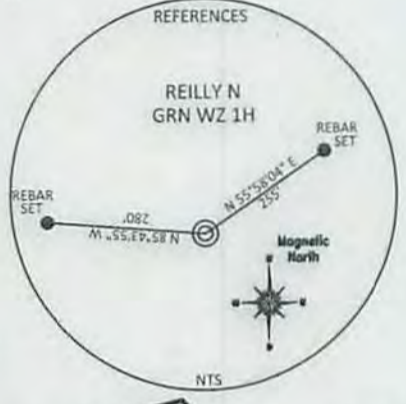
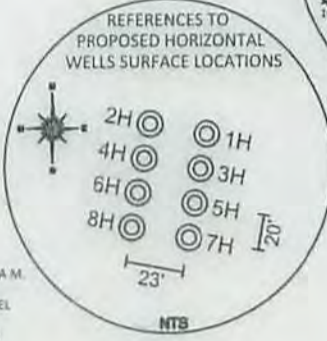
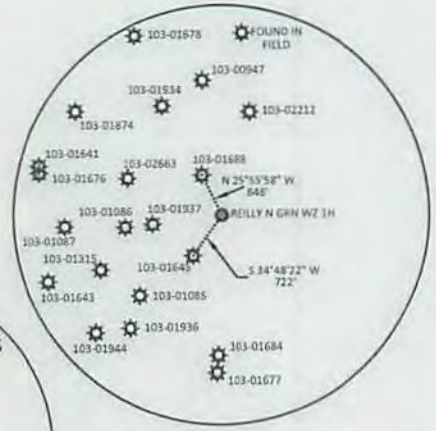
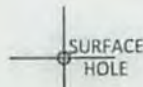


TOP HOLE (UTM NAD 83) N) 4371726.3 E) 526691.7
BOTTOM HOLE (UTM NAD 83) N) 4373135.3 E) 525164.8



REFERENCE NOTES
 Boundaries as shown taken from deeds, tax maps and field locations. A full boundary survey is not expressed nor implied. All bearings are based on true north. Ownership taken from public records Wetzel County, West Virginia NOVEMBER 2014 State Plane Coordinates & NAD 83 Lat/Long by differential submeter mapping grade GPS (drafted by EAM)

FILE #: AE002
 DRAWING #: 2474
 SCALE: PLAT - 1" = 1400'
 TICK MARK - 1" = 2000'
 MINIMUM DEGREE OF ACCURACY: 1/200
 PROVEN SOURCE OF ELEVATION: SUBMETER MAPPING GRADE GPS

I, THE UNDERSIGNED, HEREBY CERTIFY THAT THIS PLAT IS CORRECT TO THE BEST OF MY KNOWLEDGE AND BELIEF AND SHOWS ALL THE INFORMATION REQUIRED BY LAW AND THE REGULATIONS ISSUED AND PRESCRIBED BY THE DEPARTMENT OF ENVIRONMENTAL PROTECTION.
 Signed: *[Signature]*
 L.L.S. #2124: Ernest J. Benchek III



(+) DENOTES LOCATION OF WELL ON UNITED STATES TOPOGRAPHIC MAPS WYDEP
 OFFICE OF OIL & GAS
 601 57TH STREET
 CHARLESTON, WV 25304

Well Type: Oil Waste Diposal Production Deep
 Gas Liquid Injection Storage Shallow

WATERSHED: FISHING CREEK
 COUNTY/DISTRICT: WETZEL / GREEN
 SURFACE OWNER: J.S. BOOTH ESTATE AND DALLISON LUMBER
 OIL & GAS ROYALTY OWNER: SHIBEN ESTATES, INC. & DALLISON LUMBER INC.
 LEASE NUMBERS:

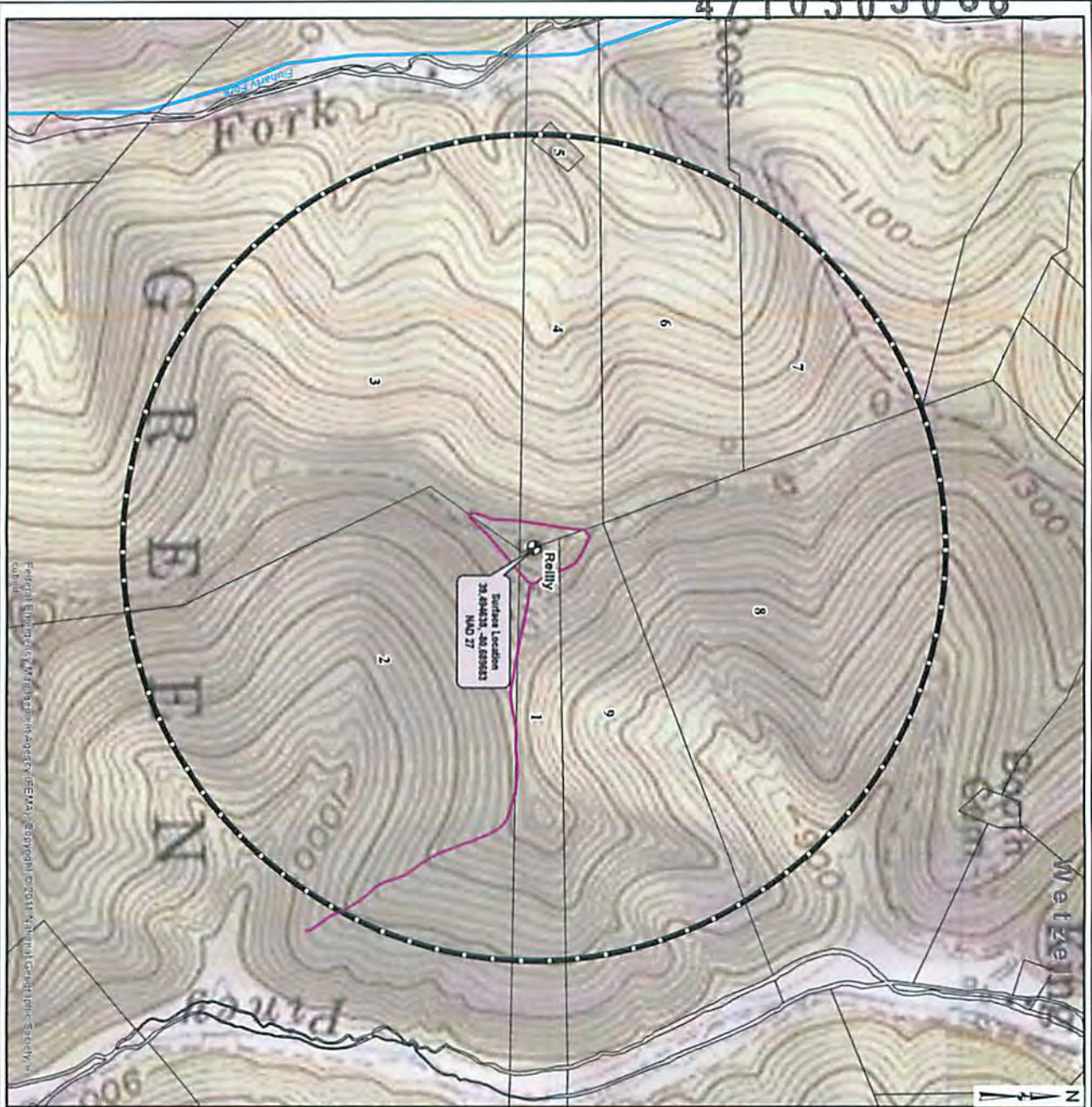
DATE: MAY 8, 2015
 OPERATOR'S WELL #: REILLY N GRN WZ 1H
 API WELL #: 47 103 03088 H6A
 STATE COUNTY PERMIT

ELEVATION: 1500'
 QUADRANGLE: CENTER POINT, WV
 ACREAGE: 41.28 +/- 06/05/2015
 ACREAGE: 573.33 +/-

DRILL CONVERT DRILL DEEPER REDRILL FRACTURE OR STIMULATE
 PLUG OFF FORMATION PERFORATE NEW FORMATION PLUG & ABANDON
 CLEAN OUT & REPLUG OTHER CHANGE (SPECIFY):

TARGET FORMATION: MARCELLUS
 ESTIMATED DEPTH: TVD: 7,460' TMD: 15,250'
 WELL OPERATOR: American Energy-Marcellus LLC.
 ADDRESS: 3501 NW 63rd Street
 CITY: Oklahoma City STATE: OK ZIP CODE: 73116
 DESIGNATED AGENT: Eric Gillespie
 ADDRESS: 3501 NW 63rd Street
 CITY: Oklahoma City STATE: OK ZIP CODE: 73116

4710303088



Federal Emergency Management Agency (FEMA), copyright 2007 National Geographic Society, a subsidiary of

Received
Office of Oil & Gas
FEB 13 2015

Point No.	Location	Notes
1	ON SURFACE	1. SURFACE
2	ON SURFACE	2. ON SURFACE
3	ON SURFACE	3. ON SURFACE
4	ON SURFACE	4. ON SURFACE
5	ON SURFACE	5. ON SURFACE
6	ON SURFACE	6. ON SURFACE
7	ON SURFACE	7. ON SURFACE
8	ON SURFACE	8. ON SURFACE
9	ON SURFACE	9. ON SURFACE

Scale: 0 to 500 Feet

Legend:

- AEU Surface Location
- Well Pad
- Access Drive
- AEU Testing Radius (2007)
- Streams and Rivers
- 100 Year Flood Zones
- Wetzel County Parcel Line
- WV County Lines

DATE: 01/13/15
 JOB NO.: 751117
 DRAWN: CHD
 SHEET NO.: 1

ceso
CREATION TO COMPLETION
www.cesoinc.com
Engineering • Architecture • Survey • Construction Mgt. • Environmental

WATER SAMPLING FIELD MAP

REILLY WELL PAD
WETZEL COUNTY, WV

AMERICAN ENERGY
UTICA

NO.	DATE	DESCRIPTION