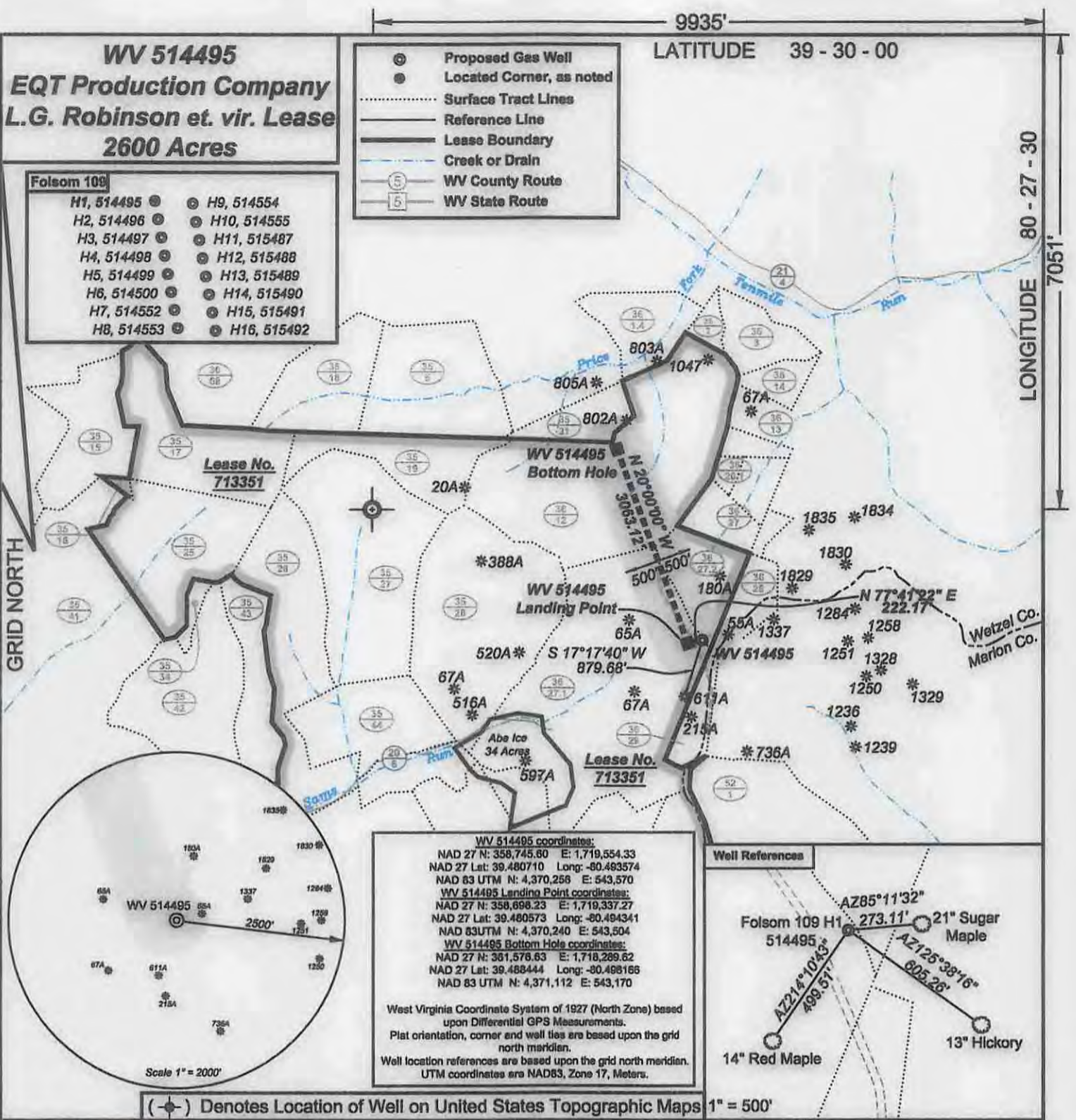


**WV 514495**  
**EQT Production Company**  
**L.G. Robinson et. vir. Lease**  
**2600 Acres**

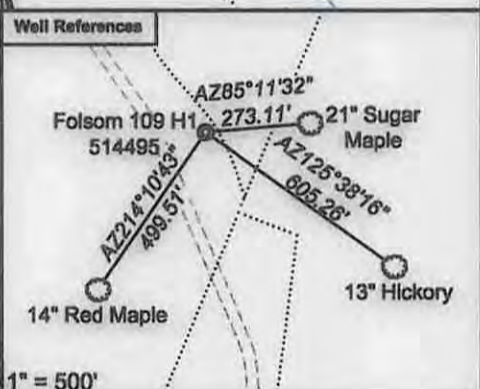
- ⊙ Proposed Gas Well
- Located Corner, as noted
- ⋯ Surface Tract Lines
- Reference Line
- Lease Boundary
- Creek or Drain
- Ⓢ WV County Route
- Ⓢ WV State Route

- Folsom 109**
- |            |   |             |   |
|------------|---|-------------|---|
| H1, 514495 | ⊙ | H9, 514554  | ⊙ |
| H2, 514496 | ⊙ | H10, 514555 | ⊙ |
| H3, 514497 | ⊙ | H11, 515487 | ⊙ |
| H4, 514498 | ⊙ | H12, 515488 | ⊙ |
| H5, 514499 | ⊙ | H13, 515489 | ⊙ |
| H6, 514500 | ⊙ | H14, 515490 | ⊙ |
| H7, 514552 | ⊙ | H15, 515491 | ⊙ |
| H8, 514553 | ⊙ | H16, 515492 | ⊙ |



**WV 514495 coordinates:**  
 NAD 27 N: 358,745.80 E: 1,719,554.33  
 NAD 27 Lat: 39.480710 Long: -80.493574  
 NAD 83 UTM N: 4,370,256 E: 543,570  
**WV 514495 Landing Point coordinates:**  
 NAD 27 N: 358,698.23 E: 1,719,337.27  
 NAD 27 Lat: 39.480573 Long: -80.494341  
 NAD 83 UTM N: 4,370,240 E: 543,504  
**WV 514495 Bottom Hole coordinates:**  
 NAD 27 N: 361,576.63 E: 1,718,289.62  
 NAD 27 Lat: 39.488444 Long: -80.498166  
 NAD 83 UTM N: 4,371,112 E: 543,170

West Virginia Coordinate System of 1927 (North Zone) based upon Differential GPS Measurements.  
 Plat orientation, corner and well ties are based upon the grid north meridian.  
 Well location references are based upon the grid north meridian.  
 UTM coordinates are NAD83, Zone 17, Meters.



(⊙) Denotes Location of Well on United States Topographic Maps 1" = 500'



*I, the undersigned, hereby certify that this plat is correct to the best of my knowledge and belief and shows all the information required by law and the regulations issued and prescribed by the Department of Environmental Protection.*

*Ben Syntek*  
 P.S. 2092



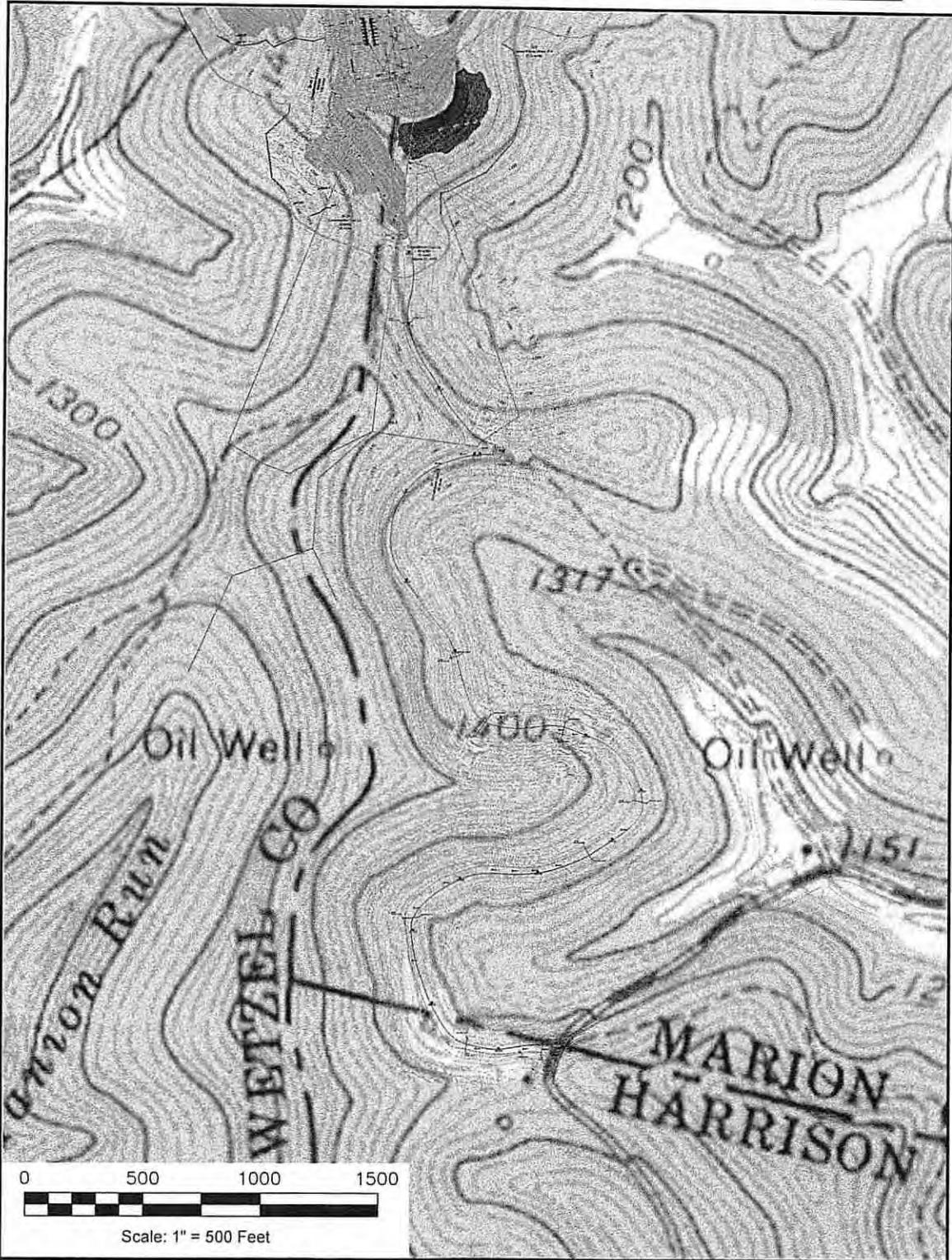
FILE NO: 165-13  
 DRAWING NO: Folsom 109 H1  
 SCALE: 1" = 2000'  
 MINIMUM DEGREE OF ACCURACY: 1:2500  
 PROVEN SOURCE OF ELEVATION: NGS CORS Station

**STATE OF WEST VIRGINIA**  
 DEPARTMENT OF ENVIRONMENTAL PROTECTION  
**OIL AND GAS DIVISION**

DATE: December 8 20 14  
 OPERATOR'S WELL NO. 514495  
 API WELL NO. H16A  
 47 - 103 - 03674  
 STATE COUNTY PERMIT

WELL TYPE:  OIL  GAS  LIQUID INJECTION  WASTE DISPOSAL  
 (IF GAS) PRODUCTION:  STORAGE  DEEP  SHALLOW  
 LOCATION: ELEVATION: Original 1500 Proposed 1460 WATERSHED Sams Run of Fishing Creek QUADRANGLE: Wallace  
 DISTRICT: Grant COUNTY: Wetzel  
 SURFACE OWNER: Consolidation Coal Company ACREAGE: 2600  
 ROYALTY OWNER: Ed Broome, Inc. et. al. LEASE NO: 713351 ACREAGE: 2600  
 PROPOSED WORK:  DRILL  CONVERT  DRILL DEEPER  FRACTURE OR STIMULATE  PLUG OFF OLD FORMATION  
 PERFORATE NEW FORMATION  OTHER PHYSICAL CHANGE IN WELL (SPECIFY)  
 PLUG AND ABANDON  CLEAN OUT AND REPLUG TARGET FORMATION: Marcellus ESTIMATED DEPTH: TVD 7828

WELL OPERATOR: EQT Production Company DESIGNATED AGENT: Rex C. Ray  
 ADDRESS: 115 Professional Place PO Box 280 ADDRESS: 115 Professional Place PO Box 280  
 Bridgeport, WV 26330 Bridgeport, WV 26330



Folsom & Wallace 7.5' USGS QUADRANGLE		Proposed Disturbance Area	
Projected culvert inventory. (for bid purposes only)		Well Site Location	See Site Plan
15" minimum diameter culverts	See Site Plan	Proposed Access Road	See Site Plan
24" minimum diameter culverts	See Site Plan	Approximate Total Disturbance	See Site Plan
DRAWN BY: Dale Tomlin PS	DATE: December 5, 2014	FILE NO: 165-13	DRAWING FILE NO: 165-13 Rec Plan

Note: SEE SITE PLAN OF FOLSOM 109 FOR COMPLETE GRADING & DRAINAGE CONSTRUCTION INCLUDING EROSION & SEDIMENT CONTROL DETAILS, ETC.

*DmH  
2-3-15*

RECEIVED  
Office of Oil and Gas  
FEB 17 2015



SURVEYING AND MAPPING SERVICES PERFORMED BY:  
**ALLEGHENY SURVEYS, INC.**  
1-800-482-8606  
Birch River Office Phone: (304) 649-8606 Fax: (304) 649-8608  
237 Birch River Road P.O. Box 438 Birch River, WV 26610

WV Department of Environmental Protection  
07/03/2015