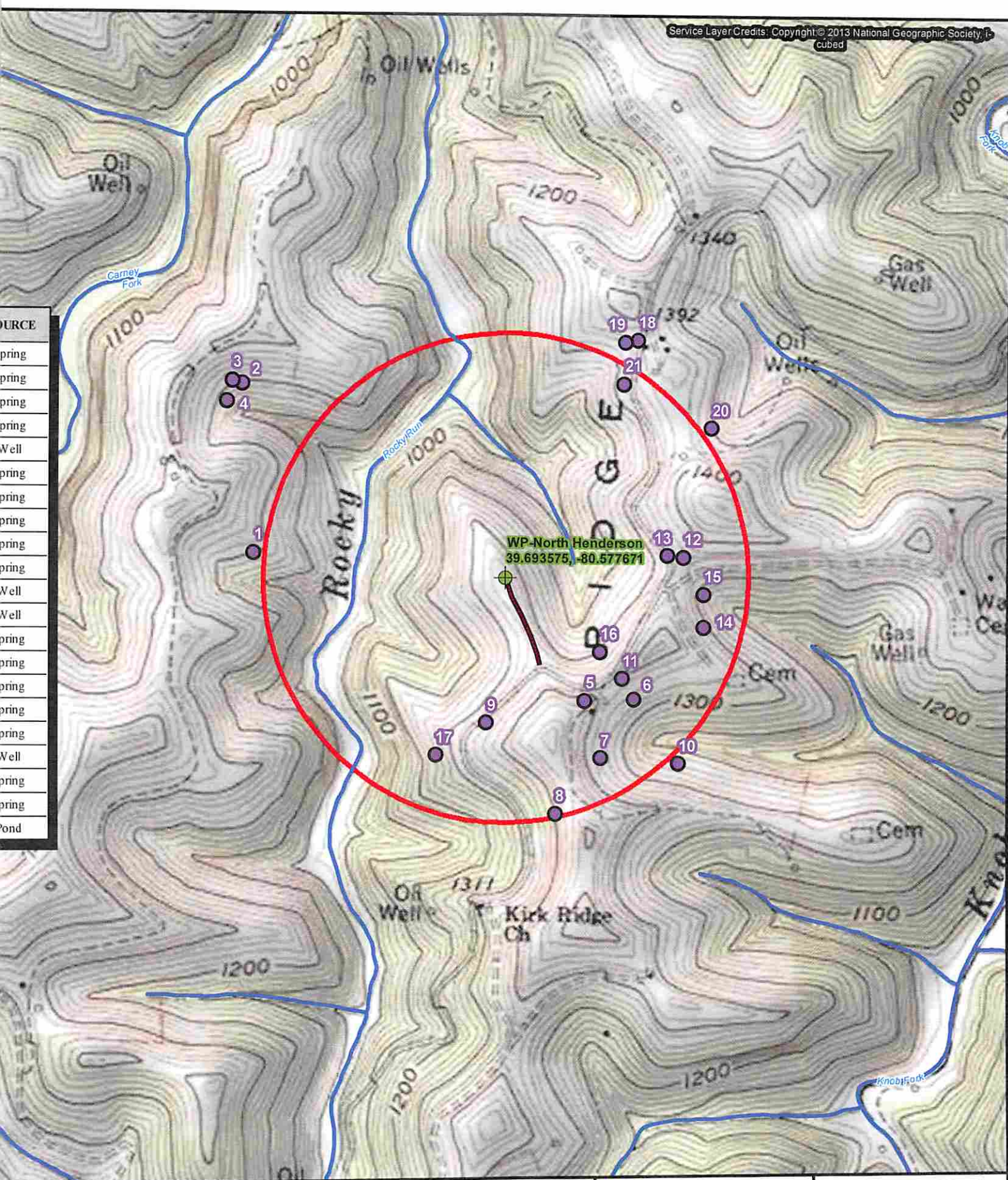






- Source
- Spring
- Spring
- Spring
- Spring
- Well
- Spring
- Spring
- Spring
- Spring
- Spring
- Well
- Well
- Spring
- Spring
- Spring
- Spring
- Spring
- Well
- Spring
- Spring
- Pond



Access Road

2000' Well Pad Radius

NHD Stream

Lake/Pond (None Present)

0 1,000 Feet

1 inch = 1,000 feet

Littleton, WV USGS 7.5' Topographic Quadrangle

Drawn By: JPM

11/13/2014