

BIG177
WV 512916
EQT PRODUCTION COMPANY

BOTTOM HOLE LATITUDE 39°37'30"

5,327'

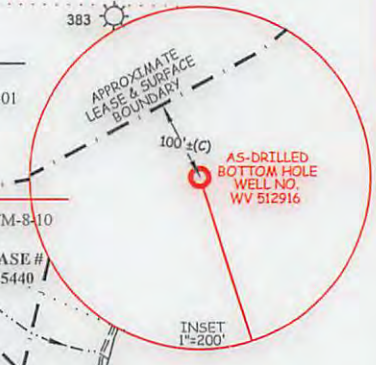
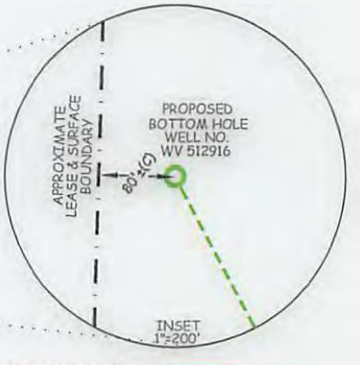
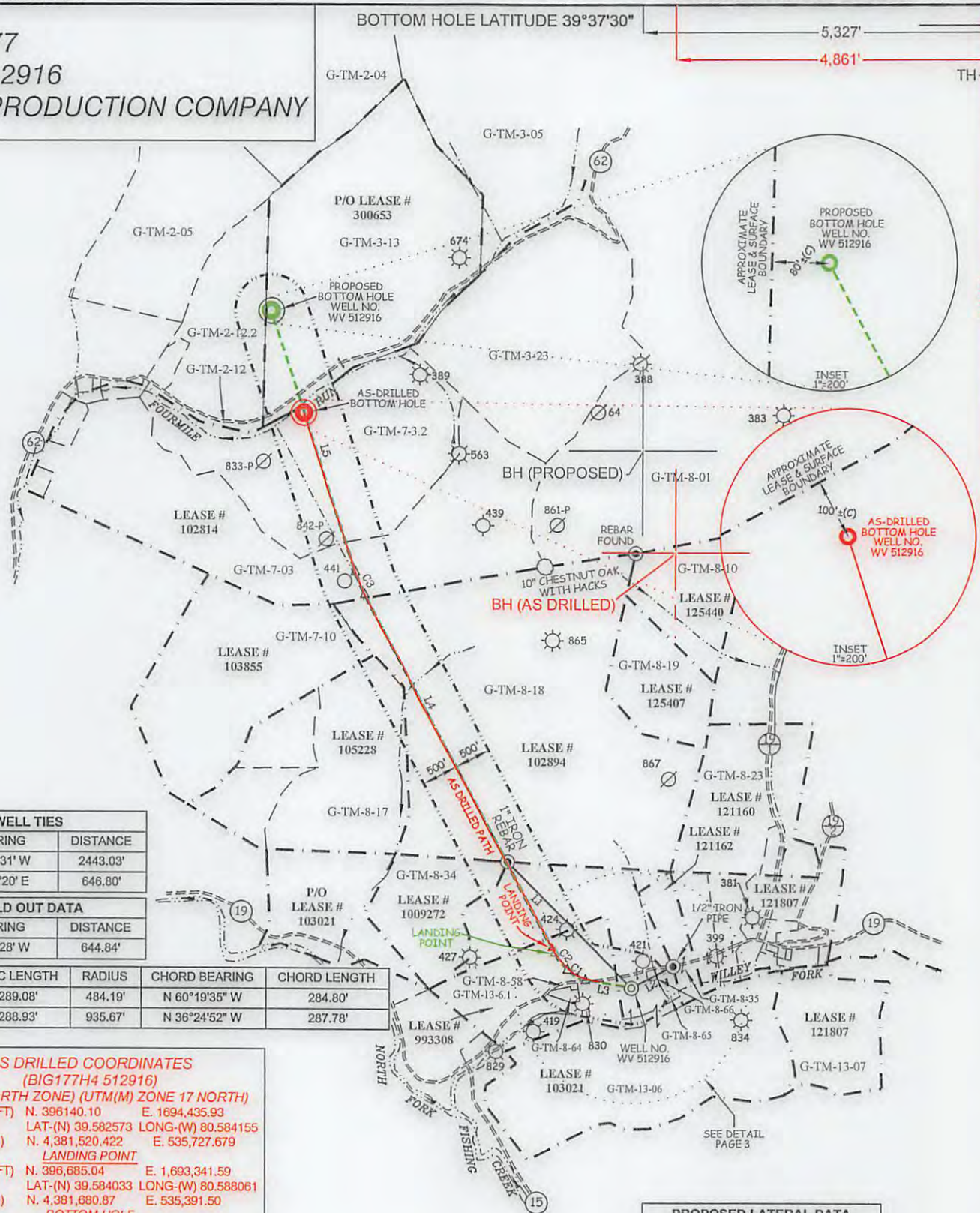
4,861'

TH

TOP HOLE LONGITUDE 80°35'00"

BOTTOM HOLE LONGITUDE 80°35'00"

NAD'27 GRID NORTH



WELL TIES		
ID	BEARING	DISTANCE
L1	N 44°31' W	2443.03'
L2	N 62°20' E	646.80'

BUILD OUT DATA		
ID	BEARING	DISTANCE
L3	N 80°28' W	644.84'

CURVE	ARC LENGTH	RADIUS	CHORD BEARING	CHORD LENGTH
C1	289.08'	484.19'	N 60°19'35" W	284.80'
C2	288.93'	935.67'	N 36°24'52" W	287.78'

AS DRILLED COORDINATES
(BIG177H4 512916)
(S.P.C. NORTH ZONE) (UTM(M) ZONE 17 NORTH)
 NAD'27 S.P.C.(FT) N. 396140.10 E. 1694,435.93
 NAD'27 GEO. LAT-(N) 39.582573 LONG-(W) 80.584155
 NAD'83 UTM (M) N. 4,381,520.422 E. 535,727.679

LANDING POINT
 NAD'27 S.P.C.(FT) N. 396,685.04 E. 1,693,341.59
 NAD'27 GEO. LAT-(N) 39.584033 LONG-(W) 80.588061
 NAD'83 UTM (M) N. 4,381,680.87 E. 535,391.50

BOTTOM HOLE
 NAD'27 S.P.C.(FT) N. 404,077.67 E. 1,689,901.70
 NAD'27 GEO. LAT-(N) 39.604213 LONG-(W) 80.600586
 NAD'83 UTM (M) N. 4,383,915.60 E. 534,305.98

PROPOSED LATERAL DATA		
ID	BEARING	DISTANCE
L4	N 28°00' W	5610.22'

CURVE	ARC LENGTH	RADIUS	CHORD BEARING	CHORD LENGTH
C3	338.90'	1910.04'	N 22°54'59" W	338.45'

ID	BEARING	DISTANCE
L5	N 17°50' W	3795.46'

TOTAL LATERAL LENGTH = 9744.58'

AS-DRILLED TOTAL LATERAL LENGTH = 8179.79'

SLS
Land & Energy Development
 Solutions from the ground up.
 P.O. Box 150 • 12 Vanhorn Drive • Glenville, WV 26351 • (304) 462-5634
www.slsurveys.com

(S.P.C. NORTH ZONE) (UTM(M) ZONE 17 NORTH)
 NAD'27 S.P.C.(FT) N. 396,140.10 E. 1,694,435.93
 NAD'27 GEO. LAT-(N) 39.582573 LONG-(W) 80.584155
 NAD'83 UTM (M) N. 4,381,520.422 E. 535,727.679

LANDING POINT
 NAD'27 S.P.C.(FT) N. 396,618.92 E. 1,693,381.03
 NAD'27 GEO. LAT-(N) 39.583853 LONG-(W) 80.587918
 NAD'83 UTM (M) N. 4,381,660.93 E. 535,403.86

BOTTOM HOLE
 NAD'27 S.P.C.(FT) N. 405,497.34 E. 1,689,453.20
 NAD'27 GEO. LAT-(N) 39.608095 LONG-(W) 80.602240
 NAD'83 UTM (M) N. 4,384,345.83 E. 534,162.14



(+) DENOTES LOCATION OF WELL ON UNITED STATES TOPOGRAPHIC MAPS.

LEGEND	
LEASE LINE	---
SURFACE LINE	- - - -
PROPOSED WELL LATERAL	---
AS-DRILLED WELL LATERAL	---
OFFSET LINE	---
TIE LINE	---
CREEK	---
ROAD	---
COUNTY ROUTE	⊕
PROPOSED WELL	⊙
EXISTING WELL	⊙
PERMITTED WELL	⊙
GRANT DISTRICT TAX MAP-PARCEL	G-TM-00-00

SCALE 1" = 2000' FILE NO. 6806P512916R14AD.dwg
 DATE OCTOBER 02, 20 13
 03/26/14, 09/09/14, 08/25/15, 09/14/15, 10/06/16
 REVISED 03/31/17, 04/21/17 & 09/13/17

OPERATORS WELL NO. WV 512916
 API WELL NO. 47 — 103 — 03058
 NO. STATE COUNTY PERMIT

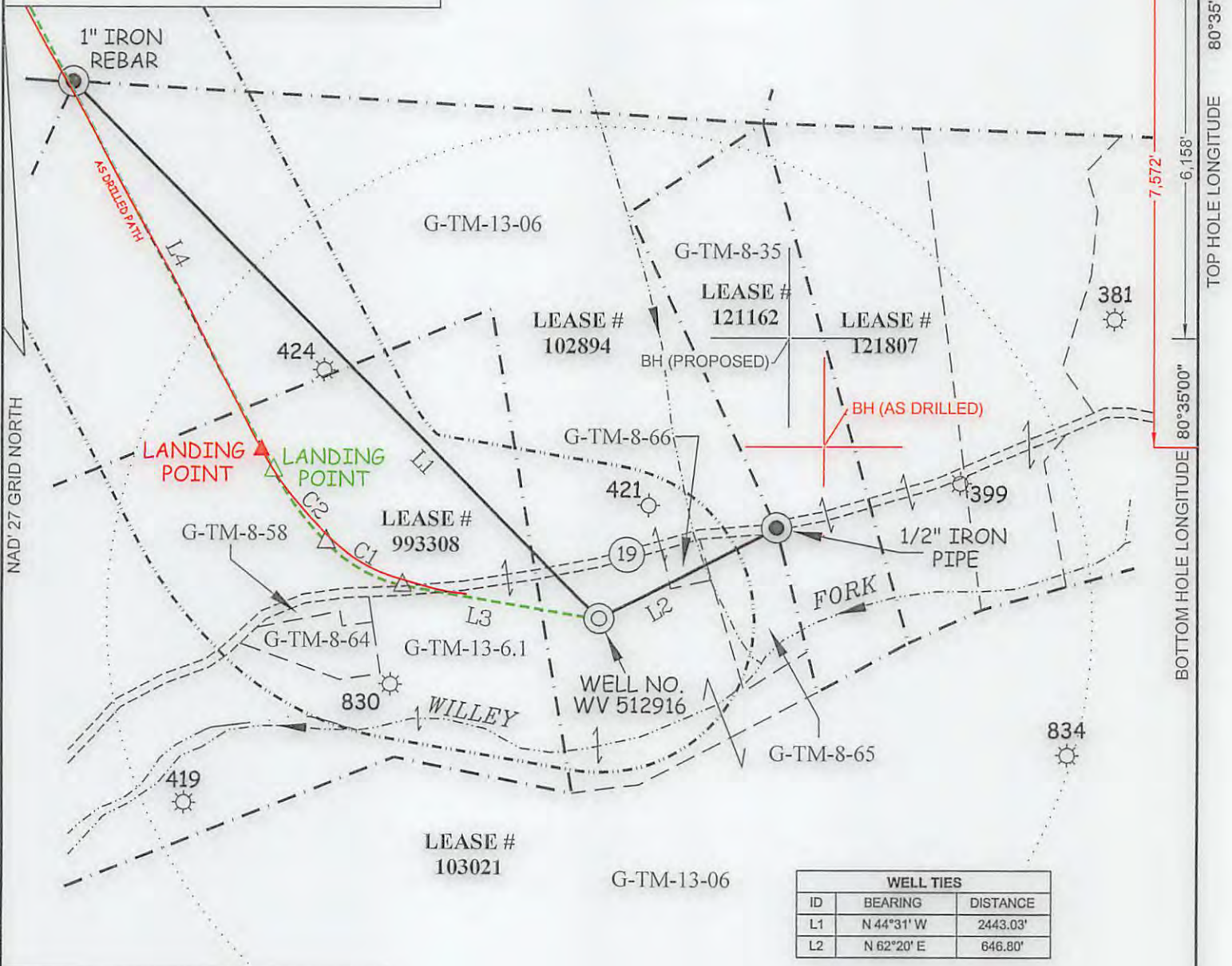
STATE OF WEST VIRGINIA
 DIVISION OF ENVIRONMENTAL PROTECTION
 OFFICE OF OIL AND GAS

WELL OPERATOR EQT PRODUCTION COMPANY DESIGNATED AGENT REX C. RAY
 ADDRESS 115 PROFESSIONAL PLACE P.O. BOX 280 ADDRESS 115 PROFESSIONAL PLACE P.O. BOX 280
BRIDGEPORT, WV 26330 BRIDGEPORT, WV 26330

06/15/2018

COUNTY NAME PERMIT

BIG177
WV 512916
EQT PRODUCTION COMPANY



WELL TIES		
ID	BEARING	DISTANCE
L1	N 44°31' W	2443.03'
L2	N 62°20' E	646.80'

BUILD OUT DATA		
ID	BEARING	DISTANCE
L3	N 80°28' W	644.84'

CURVE	ARC LENGTH	RADIUS	CHORD BEARING	CHORD LENGTH
C1	289.08'	484.19'	N 60°19'35" W	284.80'
C2	288.93'	935.67'	N 36°24'52" W	287.78'

PROPOSED LATERAL DATA		
ID	BEARING	DISTANCE
L4	N 28°00' W	5610.22'

CURVE	ARC LENGTH	RADIUS	CHORD BEARING	CHORD LENGTH
C3	338.90'	1910.04'	N 22°54'59" W	338.45'

ID	BEARING	DISTANCE
L5	N 17°50' W	3795.46'

TOTAL LATERAL LENGTH = 9744.58'

AS-DRILLED TOTAL LATERAL LENGTH = 8179.79'

AS DRILLED COORDINATES
 (BIG177H4 512916)
 (S.P.C. NORTH ZONE) (UTM(M) ZONE 17 NORTH)
 NAD'27 S.P.C.(FT) N. 396140.10 E. 1694,435.93
 NAD'27 GEO. LAT-(N) 39.582573 LONG-(W) 80.584155
 NAD'83 UTM (M) N. 4,381,520.422 E. 535,727.679

LANDING POINT
 NAD'27 S.P.C.(FT) N. 396,685.04 E. 1,693,341.59
 NAD'27 GEO. LAT-(N) 39.584033 LONG-(W) 80.589061
 NAD'83 UTM (M) N. 4,381,680.87 E. 535,391.50

BOTTOM HOLE
 NAD'27 S.P.C.(FT) N. 404,077.67 E. 1,689,901.70
 NAD'27 GEO. LAT-(N) 39.604213 LONG-(W) 80.600586
 NAD'83 UTM (M) N. 4,383,915.60 E. 534,305.98

DETAIL
 1"=500'

SLS
Land & Energy Development
 Solutions from the ground up.
 P.O. Box 150 • 12 Vanhorn Drive • Glenville, WV 26351 • (304) 492-5634
 www.slsurveys.com

(S.P.C. NORTH ZONE) (UTM(M) ZONE 17 NORTH)
 NAD'27 S.P.C.(FT) N. 396,140.10 E. 1,694,435.93
 NAD'27 GEO. LAT-(N) 39.582573 LONG-(W) 80.584155
 NAD'83 UTM (M) N. 4,381,520.422 E. 535,727.679

LANDING POINT
 NAD'27 S.P.C.(FT) N. 396,618.92 E. 1,693,381.03
 NAD'27 GEO. LAT-(N) 39.583853 LONG-(W) 80.587918
 NAD'83 UTM (M) N. 4,381,660.93 E. 535,403.86

BOTTOM HOLE
 NAD'27 S.P.C.(FT) N. 405,497.34 E. 1,689,453.20
 NAD'27 GEO. LAT-(N) 39.608095 LONG-(W) 80.602240
 NAD'83 UTM (M) N. 4,384,345.83 E. 534,162.14



(+) DENOTES LOCATION OF WELL ON UNITED STATES TOPOGRAPHIC MAPS.

LEGEND

- LEASE LINE
- SURFACE LINE
- PROPOSED WELL LATERAL
- AS-DRILLED WELL LATERAL
- OFFSET LINE
- TIE LINE
- CREEK
- ROAD
- COUNTY ROUTE
- PROPOSED WELL
- EXISTING WELL
- PERMITTED WELL
- GRANT DISTRICT TAX MAP-PARCEL G-TM-00-00

SCALE 1" = 2000' FILE NO. 6806P512916R14AD.dwg
 DATE OCTOBER 02, 20 13
 03/26/14, 09/09/14, 08/25/15, 09/14/15, 10/06/16
 REVISED 03/31/17, 04/21/17 & 09/13/17

OPERATORS WELL NO. WV 512916
 API WELL NO. 47 — 103 — 03058
 NO. STATE COUNTY PERMIT

STATE OF WEST VIRGINIA
 DIVISION OF ENVIRONMENTAL PROTECTION
 OFFICE OF OIL AND GAS

WELL OPERATOR EQT PRODUCTION COMPANY DESIGNATED AGENT REX C. RAY
 ADDRESS 115 PROFESSIONAL PLACE P.O. BOX 280 ADDRESS 115 PROFESSIONAL PLACE P.O. BOX 280
 BRIDGEPORT, WV 26330 BRIDGEPORT, WV 26330

COUNTY NAME PERMIT

06/15/2018