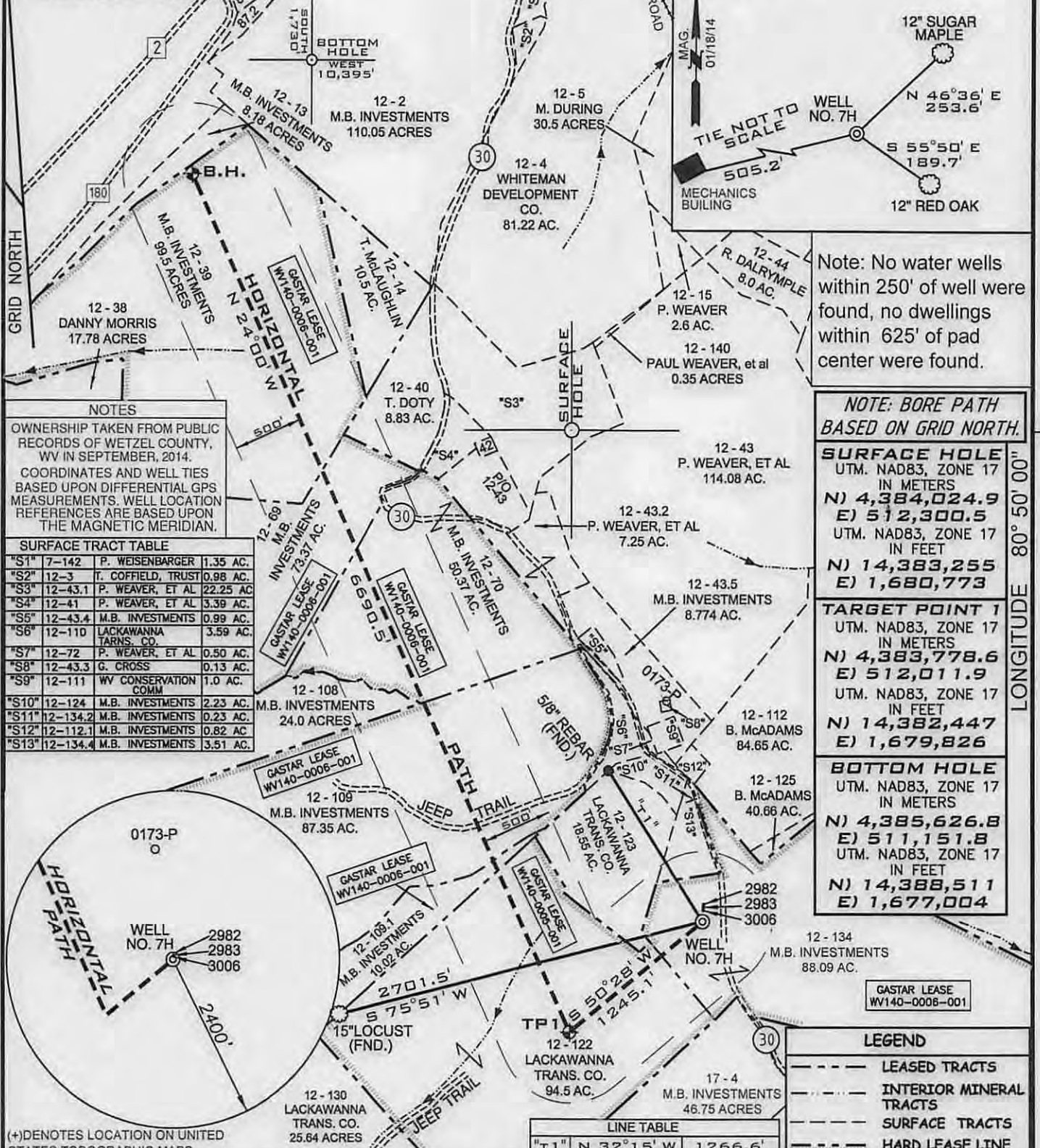


LACKAWANNA
WELL NO. 7H
503.20± AC.

LATITUDE 39° 37' 30" REFERENCES
SCALE 1"=300'



Note: No water wells within 250' of well were found, no dwellings within 625' of pad center were found.

NOTE: BORE PATH BASED ON GRID NORTH.

SURFACE HOLE
UTM. NAD83, ZONE 17
IN METERS
N) 4,384,024.9
E) 512,300.5
UTM. NAD83, ZONE 17
IN FEET
N) 14,383,255
E) 1,680,773

TARGET POINT 1
UTM. NAD83, ZONE 17
IN METERS
N) 4,383,778.6
E) 512,011.9
UTM. NAD83, ZONE 17
IN FEET
N) 14,382,447
E) 1,679,826

BOTTOM HOLE
UTM. NAD83, ZONE 17
IN METERS
N) 4,385,626.8
E) 511,151.8
UTM. NAD83, ZONE 17
IN FEET
N) 14,388,511
E) 1,677,004

LEGEND
- - - - - LEASED TRACTS
- - - - - INTERIOR MINERAL TRACTS
- - - - - SURFACE TRACTS
- - - - - HARD LEASE LINE

NOTES
OWNERSHIP TAKEN FROM PUBLIC RECORDS OF WETZEL COUNTY, WV IN SEPTEMBER, 2014.
COORDINATES AND WELL TIES BASED UPON DIFFERENTIAL GPS MEASUREMENTS. WELL LOCATION REFERENCES ARE BASED UPON THE MAGNETIC MERIDIAN.

SURFACE TRACT TABLE

"S1"	7-142	P. WEISENBARGER	1.35 AC.
"S2"	12-3	T. COFFIELD, TRUST	0.98 AC.
"S3"	12-43.1	P. WEAVER, ET AL	22.25 AC.
"S4"	12-41	P. WEAVER, ET AL	3.39 AC.
"S5"	12-43.4	M.B. INVESTMENTS	0.99 AC.
"S6"	12-110	LACKAWANNA TRANS. CO.	3.59 AC.
"S7"	12-72	P. WEAVER, ET AL	0.50 AC.
"S8"	12-43.3	G. CROSS	0.13 AC.
"S9"	12-111	WV CONSERVATION COMM	1.0 AC.
"S10"	12-124	M.B. INVESTMENTS	2.23 AC.
"S11"	12-134.2	M.B. INVESTMENTS	0.23 AC.
"S12"	12-112.1	M.B. INVESTMENTS	0.82 AC.
"S13"	12-134.4	M.B. INVESTMENTS	3.51 AC.

(+) DENOTES LOCATION ON UNITED STATES TOPOGRAPHIC MAPS

FILE NUMBER W0110309
DRAWING NUMBER LACKAWANNA_WP_7H_Rev1
SCALE 1" = 1000'
MINIMUM DEGREE OF ACCURACY 1/200
PROVEN SOURCE SUBMETER MAPPING
OF ELEVATION GRADE GPS

I, THE UNDERSIGNED, HEREBY CERTIFY THAT THIS PLAT IS CORRECT TO THE BEST OF MY KNOWLEDGE AND BELIEF AND SHOWS ALL THE INFORMATION REQUIRED BY LAW AND THE REGULATIONS ISSUED AND PRESCRIBED BY THE DEPARTMENT OF ENVIRONMENTAL PROTECTION

P.S. 2122 *Jonathan N. White*



WVDEP
OFFICE OF OIL & GAS
601 57TH STREET
CHARLESTON, WV 25304

DATE REVISED: FEBRUARY 09, 2015
OPERATORS WELL NO. LACKAWANNA NO. 7H
API WELL NO. 47-103-03052 H6A

WELL TYPE: OIL GAS LIQUID INJECTION WASTE DISPOSAL
(IF "GAS") PRODUCTION STORAGE DEEP SHALLOW
LOCATION ELEVATION 1302' WATERSHED (HUC 10) OUTLET MIDDLE ISLAND CREEK (UNDEFINED)
DISTRICT MAGNOLIA COUNTY WETZEL
QUADRANGLE PORTERS FALLS 7.5' LEASE NUMBER WV140-0006-001, WV140-0005-001

SURFACE OWNER M.B. INVESTMENTS ACREAGE 88.09
OIL & GAS ROYALTY OWNER M.B. INVESTMENTS, ET AL LEASE ACREAGE 503.20
PROPOSED WORK: DRILL CONVERT DRILL DEEPER REDRILL FRACTURE OR STIMULATE PLUG OFF OLD FORMATION
PERFORATE NEW FORMATION OTHER PHYSICAL CHANGE (SPECIFY) _____
PLUG & ABANDON CLEAN OUT & REPLUG
TARGET FORMATION MARCELLUS ESTIMATED DEPTH TVD: 6975' TMD: 13,372'
WELL OPERATOR GASTAR EXPLORATION INC. DESIGNATED AGENT MICHAEL McCOWN
ADDRESS 229 W MAIN STREET, SUITE 301 CLARKSBURG WV, 26301 ADDRESS 229 W MAIN STREET, SUITE 301 CLARKSBURG WV, 26301

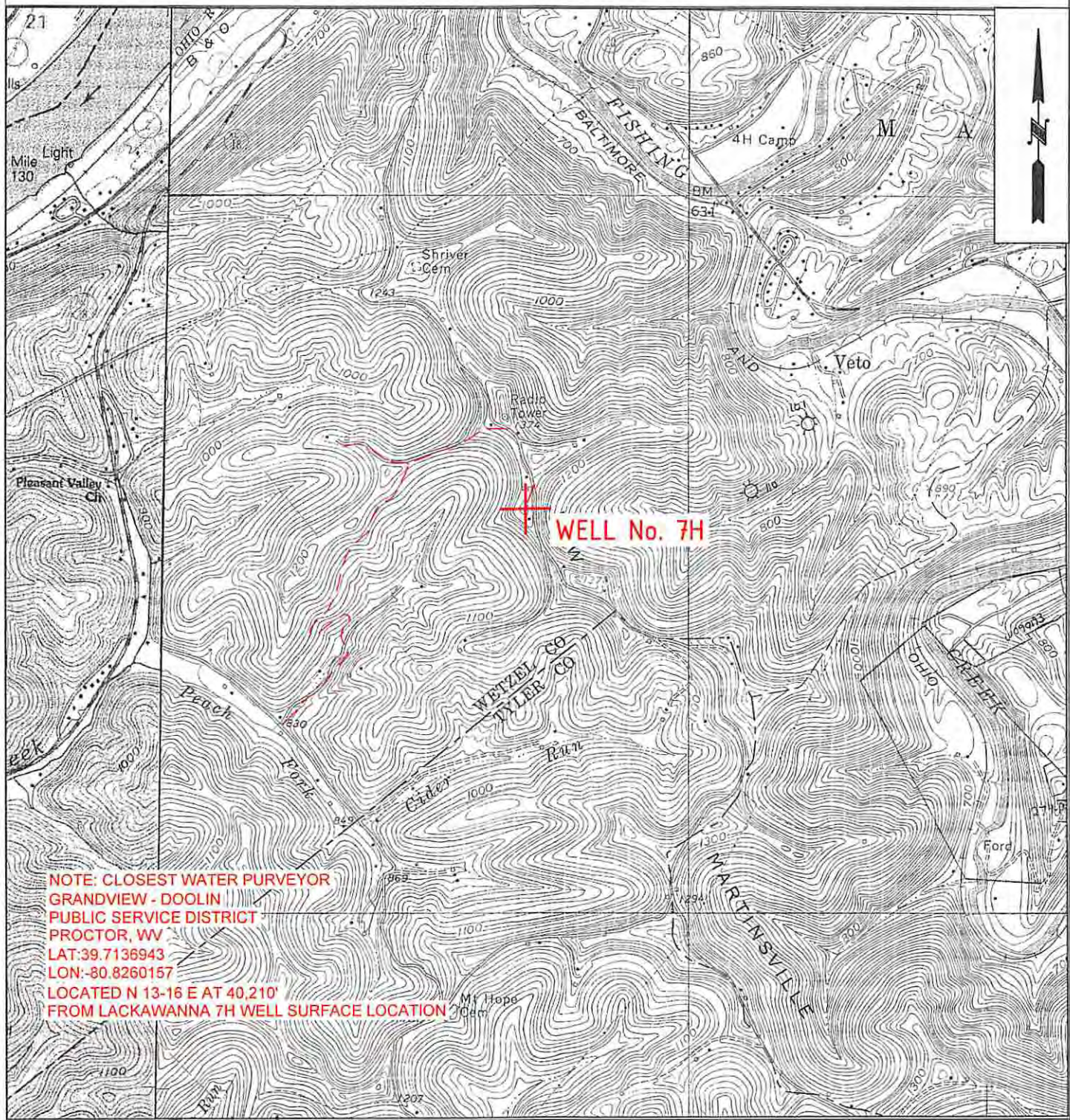
02/20/2015

WW-9

PROPOSED LACKAWANNA WELL No. 7H

SUPPLEMENT PG 2

4710303052



NOTE: CLOSEST WATER PURVEYOR
 GRANDVIEW - DOOLIN
 PUBLIC SERVICE DISTRICT
 PROCTOR, WV
 LAT: 39.7136943
 LON: -80.8260157
 LOCATED N 13-16 E AT 40,210'
 FROM LACKAWANNA 7H WELL SURFACE LOCATION

Received
 Office of Oil & Gas
 10-2-14
 OCT 08 2014

W0110309

OPERATOR	TOPO SECTION	LEASE NAME
GASTAR EXPLORATION INC. 229 W Main Street, Suite 301 Clarksburg, WV 26301	PORTERS FALLS 7.5'	LACKAWANNA
	SCALE: 1"=2000'	DATE: DATE: 09/17/14