

9,404'

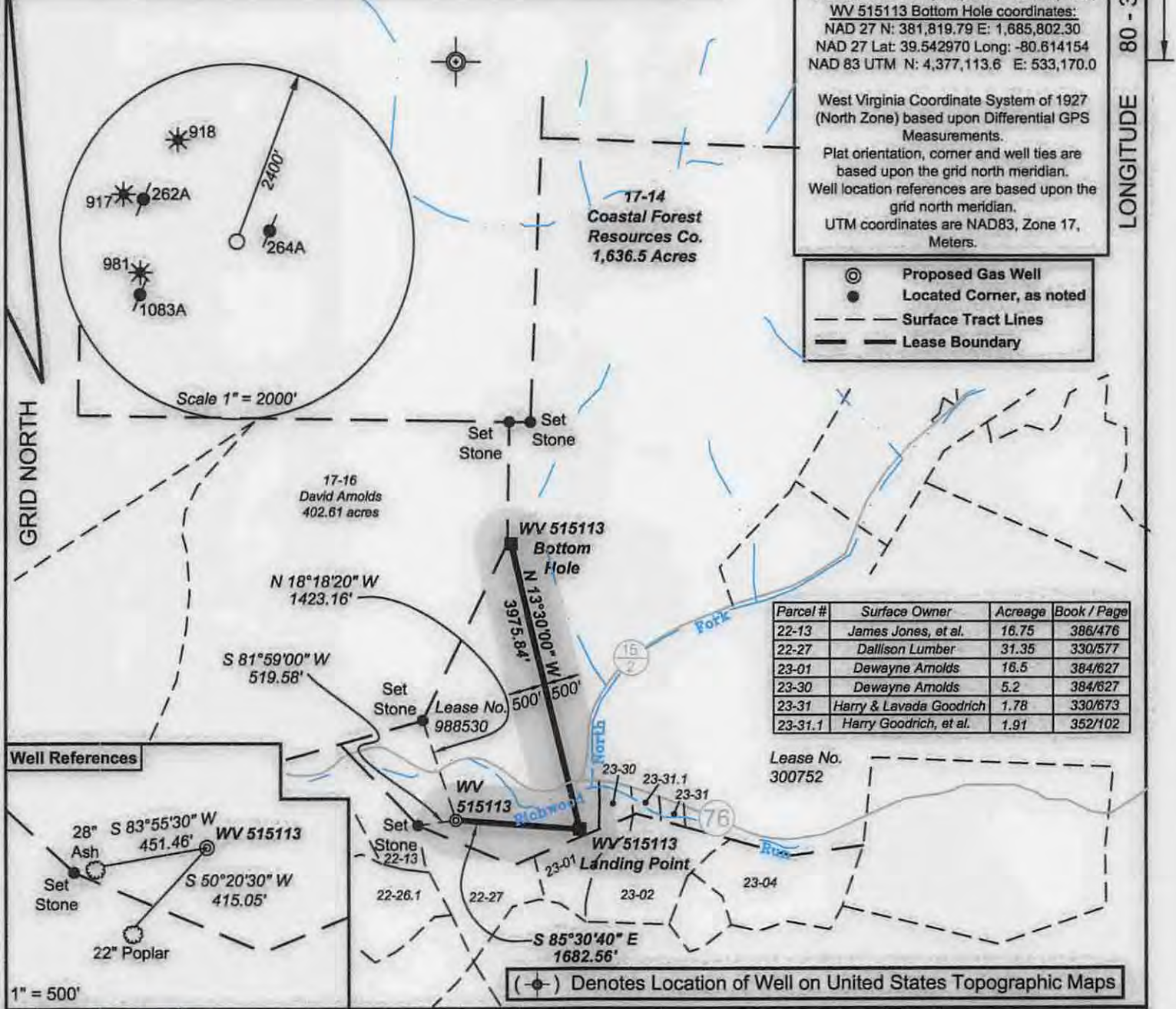
**WV 515113**  
**EQT Production Company**  
**Mills-Wetzel Land, Inc. Lease**  
**659 acres**

BIG 360

LATITUDE 39 - 32 - 30

LONGITUDE 80 - 35 - 00

3,274'



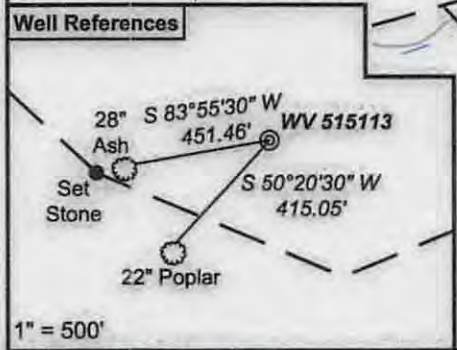
WV 515113 coordinates:  
 NAD 27 N: 378,085.52 E: 1,685,053.05  
 NAD 27 Lat: 39.532692 Long: -80.616646  
 NAD 83 UTM N: 4,375,972.1 E: 532,960.6

WV 515113 Landing Point coordinates:  
 NAD 27 N: 377,953.80 E: 1,686,730.45  
 NAD 27 Lat: 39.532388 Long: -80.610694  
 NAD 83 UTM N: 4,375,940.5 E: 533,472.3

WV 515113 Bottom Hole coordinates:  
 NAD 27 N: 381,819.79 E: 1,685,802.30  
 NAD 27 Lat: 39.542970 Long: -80.614154  
 NAD 83 UTM N: 4,377,113.6 E: 533,170.0

West Virginia Coordinate System of 1927 (North Zone) based upon Differential GPS Measurements.  
 Plat orientation, corner and well ties are based upon the grid north meridian.  
 Well location references are based upon the grid north meridian.  
 UTM coordinates are NAD83, Zone 17, Meters.

Legend:  
 ⊙ Proposed Gas Well  
 ● Located Corner, as noted  
 --- Surface Tract Lines  
 - - - Lease Boundary



I, the undersigned, hereby certify that this plat is correct to the best of my knowledge and belief and shows all the information required by law and the regulations issued and prescribed by the Department of Environmental Protection.

*Ben R. Singleton*  
 P.S. 2092

Ben R. Singleton  
 LICENSED  
 NO. 2092  
 STATE OF WEST VIRGINIA  
 PROFESSIONAL SURVEYOR

SEAL

FILE NO: 174-34-G-13 EQT Big 360  
 DRAWING NO: 174-13 Big 360 H6 Plat.dwg  
 SCALE: 1" = 2000'  
 MINIMUM DEGREE OF ACCURACY: 1:2500  
 PROVEN SOURCE OF ELEVATION: NGS CORS Station

STATE OF WEST VIRGINIA  
 DEPARTMENT OF ENVIRONMENTAL PROTECTION  
 OIL AND GAS DIVISION

DATE: August 1 20 14  
 OPERATOR'S WELL NO. 515113  
 API WELL NO. H6A  
 47 - 103 - 03035  
 STATE COUNTY PERMIT

WELL TYPE:  OIL  GAS  LIQUID INJECTION  WASTE DISPOSAL  
 (IF GAS) PRODUCTION:  STORAGE  DEEP  SHALLOW  
 LOCATION: ELEVATION: Original Ground = 1008' Proposed Ground = 998' WATERSHED Richwood Run QUADRANGLE: Big Run  
 DISTRICT: Grant COUNTY: Wetzel  
 SURFACE OWNER: Coastal Forest Resources Co. f/k/a Coastal Lumber Company ACREAGE: 1,636.5  
 ROYALTY OWNER: Mills-Wetzel Land, Inc. LEASE NO: 988530 ACREAGE: 659  
 PROPOSED WORK:  DRILL  CONVERT  DRILL DEEPER  FRACTURE OR STIMULATE  PLUG OFF OLD FORMATION  
 PERFORATE NEW FORMATION  OTHER PHYSICAL CHANGE IN WELL (SPECIFY)  
 PLUG AND ABANDON  CLEAN OUT AND REPLUG TARGET FORMATION: Genesee ESTIMATED DEPTH: TVD = 7,050' MD = 14,000'

WELL OPERATOR: EQT Production Company DESIGNATED AGENT: Rex C. Ray  
 ADDRESS: 115 Professional Place PO Box 280 ADDRESS: 115 Professional Place PO Box 280  
 Bridgeport, WV 26330 Bridgeport, WV 26330

11/14/2014

Topo Quad: Big Run 7.5'

Scale: 1" = 2000'

County: Wetzel

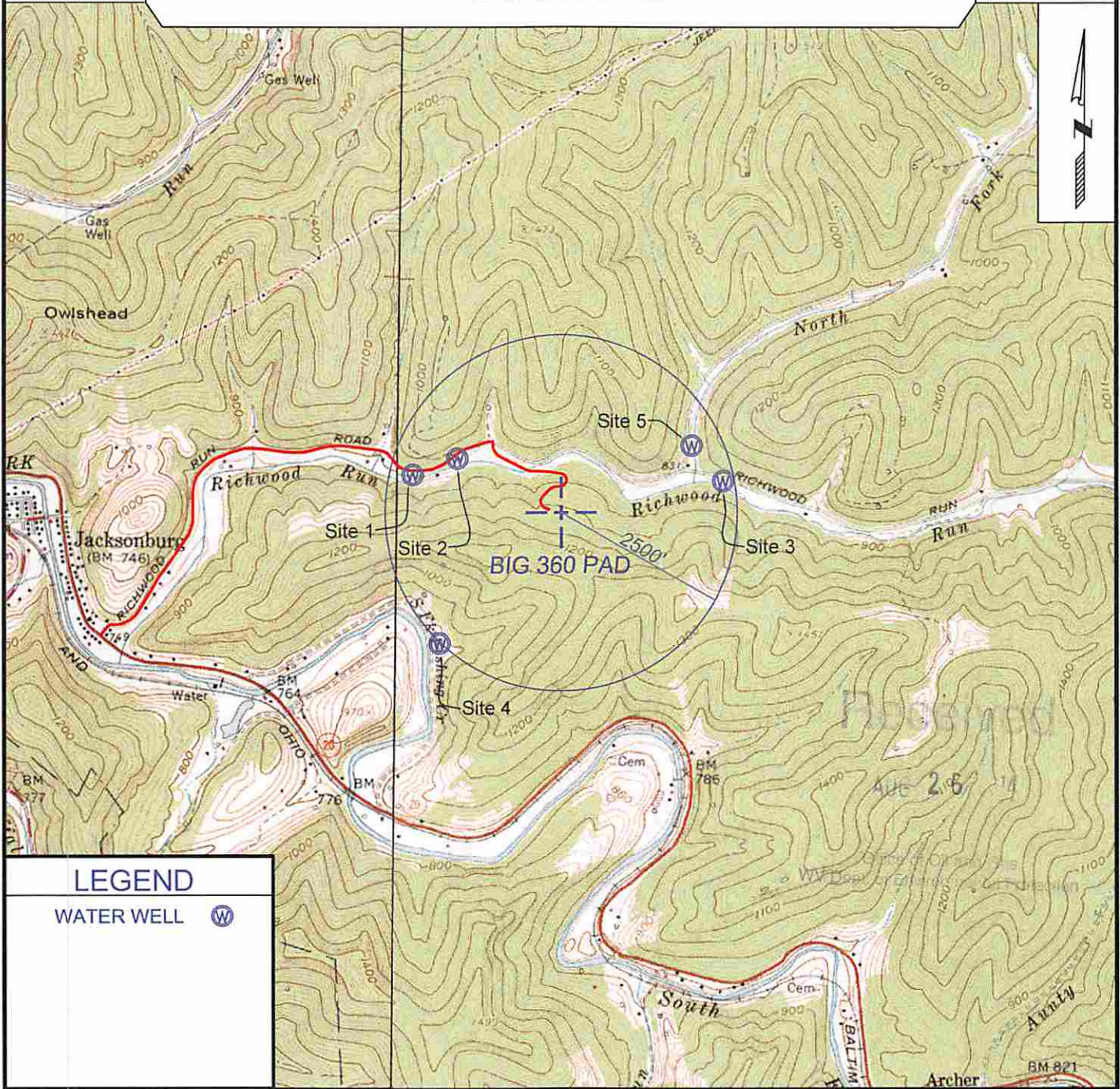
Date: July 30, 2014

District: Grant

Project No: 174-34-00-13

Water

# BIG 360 PAD



## LEGEND

WATER WELL



SURVEYING AND MAPPING SERVICES PERFORMED BY:

## ALLEGHENY SURVEYS, INC.

1-800-482-8606  
 237 Birch River Road  
 Birch River, WV 26610  
 PH: (304) 649-8606  
 FAX: (304) 649-8608

PREPARED FOR:

## EQT Production Company

P.O. Box 280  
 Bridgeport, WV 26330