

WV 515112
EQT Production Company
 Mills-Wetzel Land, Inc. Lease
 659 acres

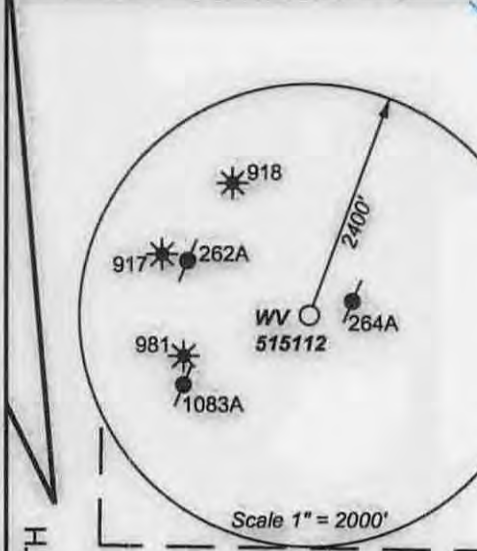
BIG 360

LATITUDE 39 - 32 - 30

9,417'

3,269'

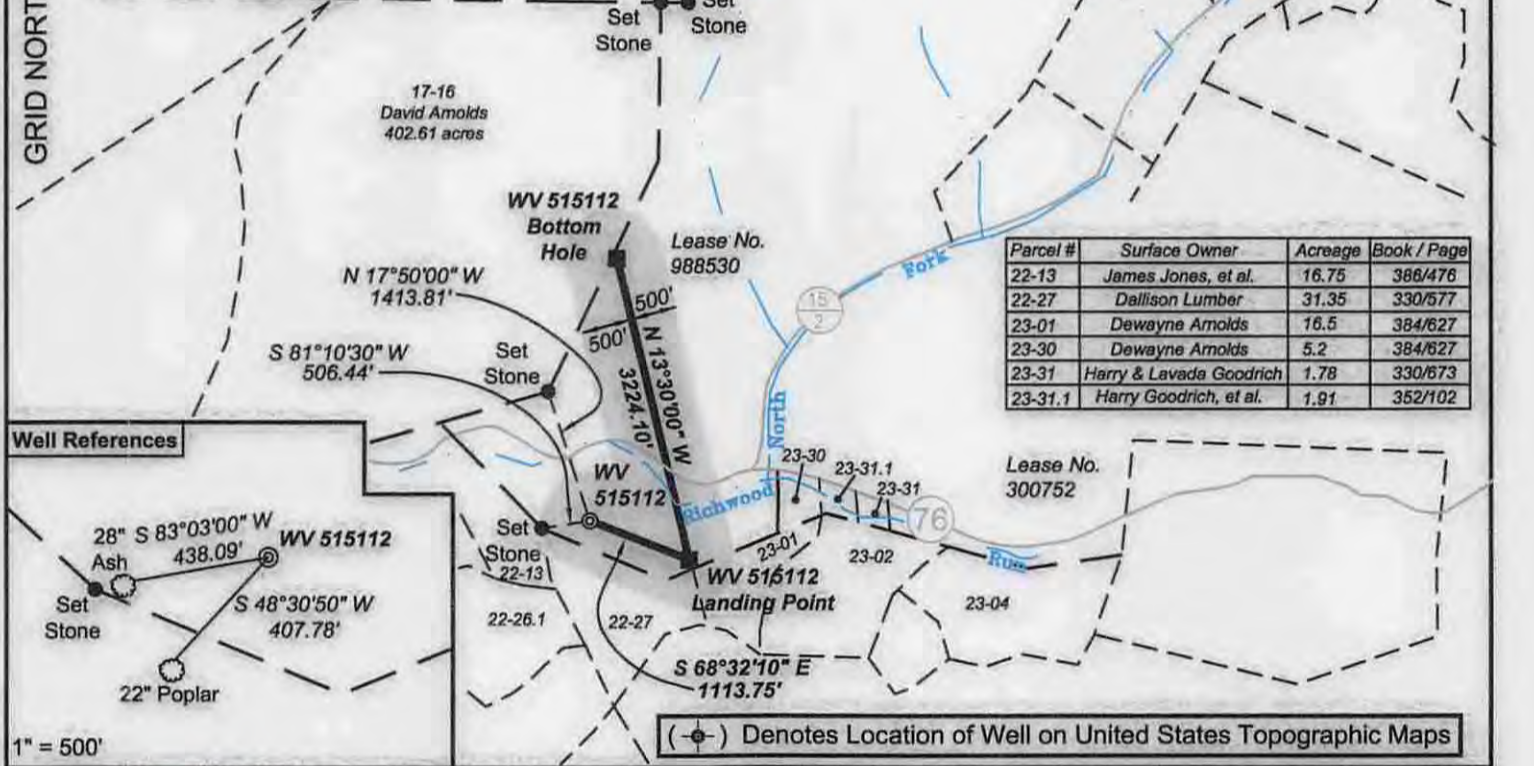
LONGITUDE 80 - 35 - 00



WV 515112 coordinates:
 NAD 27 N: 378,090.76 E: 1,685,039.00
 NAD 27 Lat: 39.532706 Long: -80.616696
 NAD 83 UTM N: 4,375,973.6 E: 532,956.3
 WV 515112 Landing Point coordinates:
 NAD 27 N: 377,683.24 E: 1,686,075.51
 NAD 27 Lat: 39.531623 Long: -80.613004
 NAD 83 UTM N: 4,375,854.8 E: 533,274.2
 WV 515112 Bottom Hole coordinates:
 NAD 27 N: 380,818.26 E: 1,685,322.86
 NAD 27 Lat: 39.540204 Long: -80.615810
 NAD 83 UTM N: 4,376,806.0 E: 533,029.0

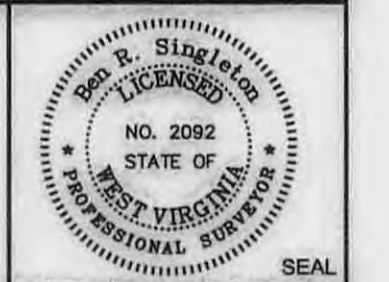
West Virginia Coordinate System of 1927 (North Zone) based upon Differential GPS Measurements.
 Plat orientation, corner and well ties are based upon the grid north meridian.
 Well location references are based upon the grid north meridian.
 UTM coordinates are NAD83, Zone 17, Meters.

Proposed Gas Well
 Located Corner, as noted
 Surface Tract Lines
 Lease Boundary



I, the undersigned, hereby certify that this plat is correct to the best of my knowledge and belief and shows all the information required by law and the regulations issued and prescribed by the Department of Environmental Protection.

Ben R. Singleton
 P.S. 2092



FILE NO: 174-34-G-13 EQT Big 360
 DRAWING NO: 174-13 Big 360 H5 Plat.dwg
 SCALE: 1" = 2000'
 MINIMUM DEGREE OF ACCURACY: 1:2500
 PROVEN SOURCE OF ELEVATION: NGS CORS Station

STATE OF WEST VIRGINIA
 DEPARTMENT OF ENVIRONMENTAL PROTECTION
 OIL AND GAS DIVISION

DATE: August 1 20 14
 OPERATOR'S WELL NO. 515112
 API WELL NO. H10A
 47 - 103 - 03034
 STATE COUNTY PERMIT

WELL TYPE: OIL GAS LIQUID INJECTION WASTE DISPOSAL
 (IF GAS) PRODUCTION: STORAGE DEEP SHALLOW
 LOCATION: ELEVATION: Original Ground = 1008' Proposed Ground = 998' WATERSHED Richwood Run QUADRANGLE: Big Run
 DISTRICT: Grant COUNTY: Wetzel
 SURFACE OWNER: Coastal Forest Resources Co. f/k/a Coastal Lumber Company ACREAGE: 1,636.5
 ROYALTY OWNER: Mills-Wetzel Land, Inc. LEASE NO: 988530 ACREAGE: 659
 PROPOSED WORK: DRILL CONVERT DRILL DEEPER FRACTURE OR STIMULATE PLUG OFF OLD FORMATION
 PERFORATE NEW FORMATION OTHER PHYSICAL CHANGE IN WELL (SPECIFY)
 PLUG AND ABANDON CLEAN OUT AND REPLUG TARGET FORMATION: Genesee ESTIMATED DEPTH: TVD = 7,050' MD = 12,700'

WELL OPERATOR: EQT Production Company DESIGNATED AGENT: Rex C. Ray
 ADDRESS: 115 Professional Place PO Box 280 ADDRESS: 115 Professional Place PO Box 280
 Bridgeport, WV 26330 Bridgeport, WV 26330

11/14/2014

Topo Quad: Big Run 7.5'

Scale: 1" = 2000'

County: Wetzel

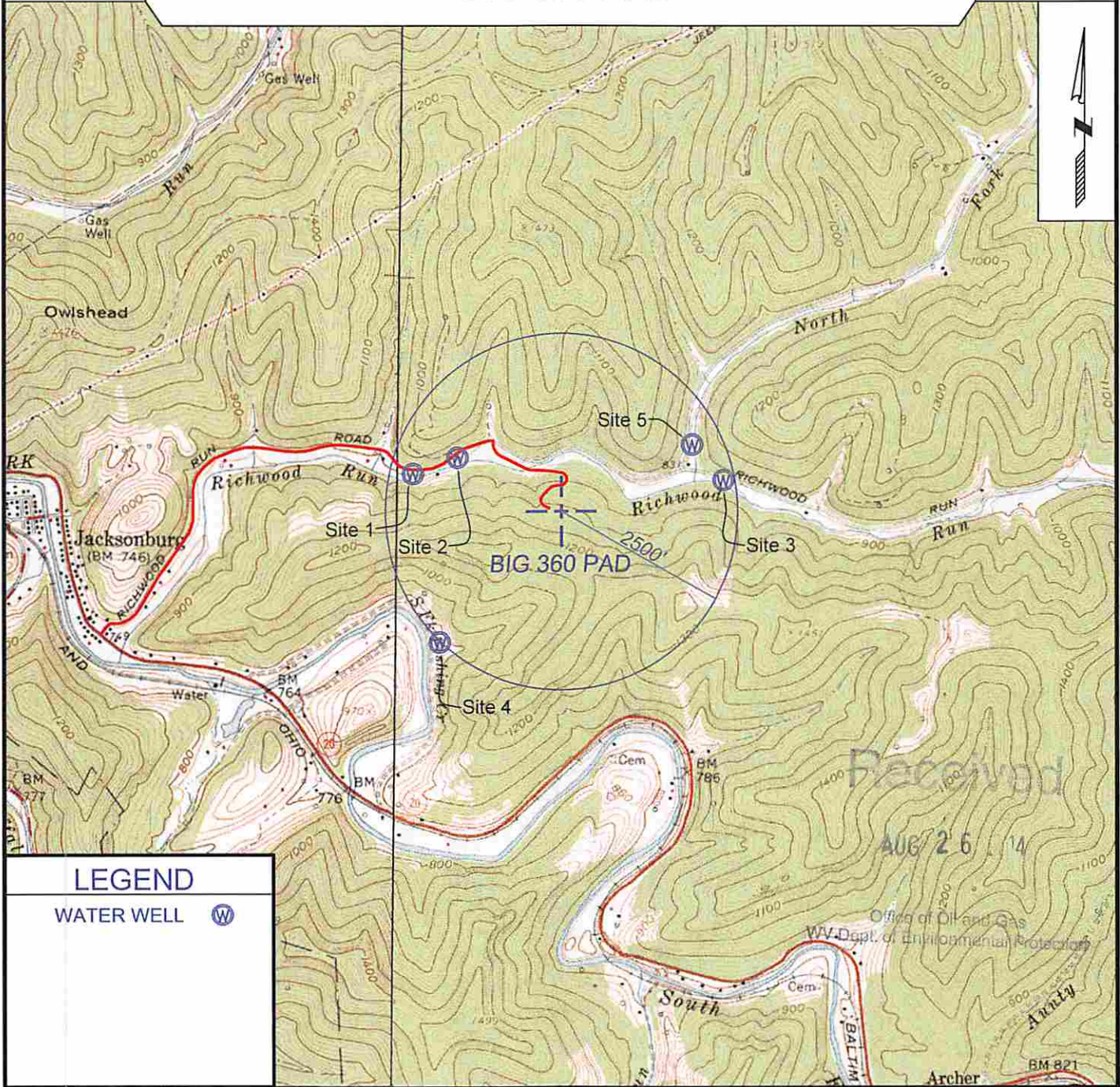
Date: July 30, 2014

District: Grant

Project No: 174-34-00-13

Water

BIG 360 PAD



LEGEND

WATER WELL 



SURVEYING AND MAPPING SERVICES PERFORMED BY:
ALLEGHENY SURVEYS, INC.
 1-800-482-8606
 237 Birch River Road
 Birch River, WV 26610
 PH: (304) 649-8606
 FAX: (304) 649-8608

PREPARED FOR:
EQT Production Company
 P.O. Box 280
 Bridgeport, WV 26330