

Big 360
WV 515110
EQT Production Company

9,406'
 LATITUDE 39 - 32 - 30

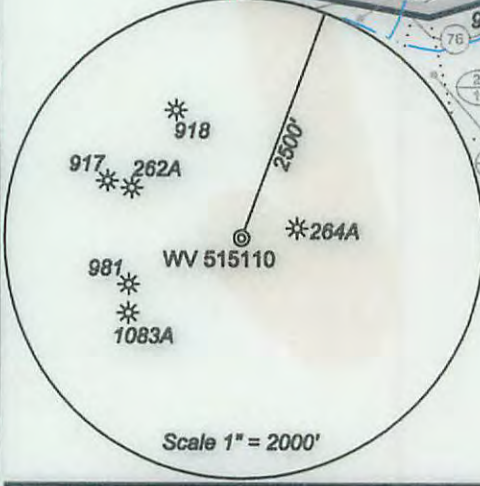
3,261'
 LONGITUDE 80 - 35 - 00

Big 360

- ⊙ H1, 515108
- ⊙ H2, 515109
- ⊙ H3, 515110
- ⊙ H4, 515111
- ⊙ H5, 515112
- ⊙ H6, 515113
- ⊙ H7, 515213
- ⊙ H8, 515214
- ⊙ H9, 515215

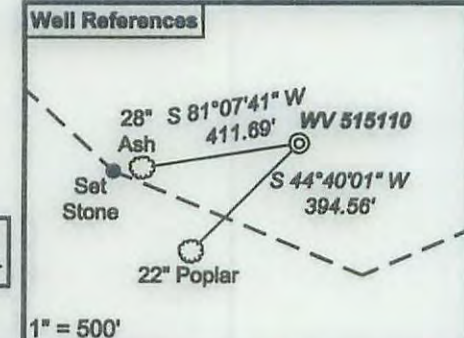
- ⊙ Proposed Gas Well
- Located Corner, as noted
- ⋯ Surface Tract Lines
- Lease Boundary

GRID NORTH



WV 515110 coordinates:
 NAD 27 N: 376,101.25 E: 1,665,010.89
 NAD 27 Lat: 39.532734 Long: -80.616797
 NAD 83 UTM N: 4,375,976.69 E: 632,947.70
WV 515110 Landing Point coordinates:
 NAD 27 N: 377,849.49 E: 1,665,066.61
 NAD 27 Lat: 39.532080 Long: -80.612972
 NAD 83 UTM N: 4,375,905.46 E: 533,276.71
WV 515110 Bottom Hole coordinates:
 NAD 27 N: 383,245.61 E: 1,664,761.12
 NAD 27 Lat: 39.546849 Long: -80.617603
 NAD 83 UTM N: 4,377,542.85 E: 532,854.65

West Virginia Coordinate System of 1927 (North Zone) based upon Differential GPS Measurements.
 Plat orientation, corner and well ties are based upon the grid north meridian.
 Well location references are based upon the grid north meridian.
 UTM coordinates are NAD83, Zone 17, Meters.



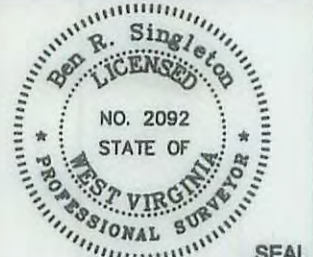
Lease No.	Acres	Owner
1.1167216222	239.903	Kenneth R. Mason, et al.

(⊙) Denotes Location of Well on United States Topographic Maps



I, the undersigned, hereby certify that this plat is correct to the best of my knowledge and belief and shows all the information required by law and the regulations issued and prescribed by the Department of Environmental Protection.

Ben R. Singleton
 P.S. 2092



FILE NO: 174-13
 DRAWING NO: 174-13 Big 360 H3
 SCALE: 1" = 2000'
 MINIMUM DEGREE OF ACCURACY: 1:2500
 PROVEN SOURCE OF ELEVATION: NGS CORS Station

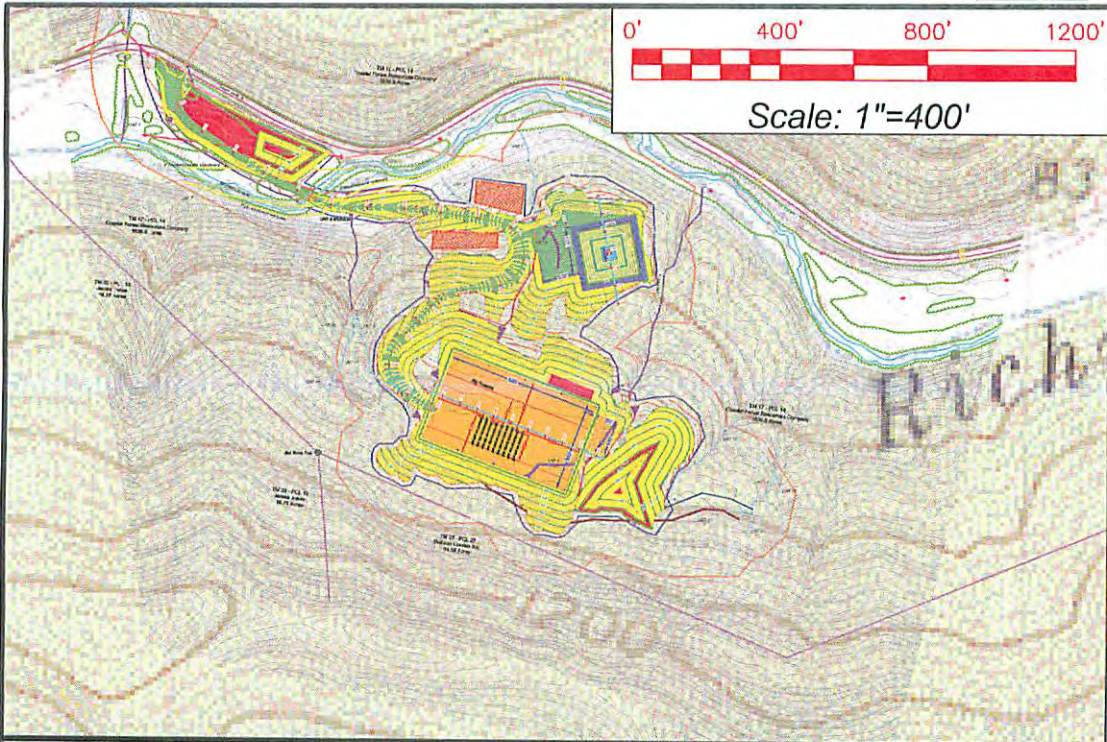
STATE OF WEST VIRGINIA
 DEPARTMENT OF ENVIRONMENTAL PROTECTION
OIL AND GAS DIVISION

DATE: December 4 20 15
 OPERATOR'S WELL NO. 515110
 API WELL NO 47 - 103 - 03032
 STATE COUNTY PERMIT

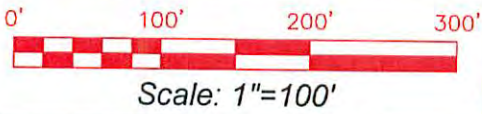
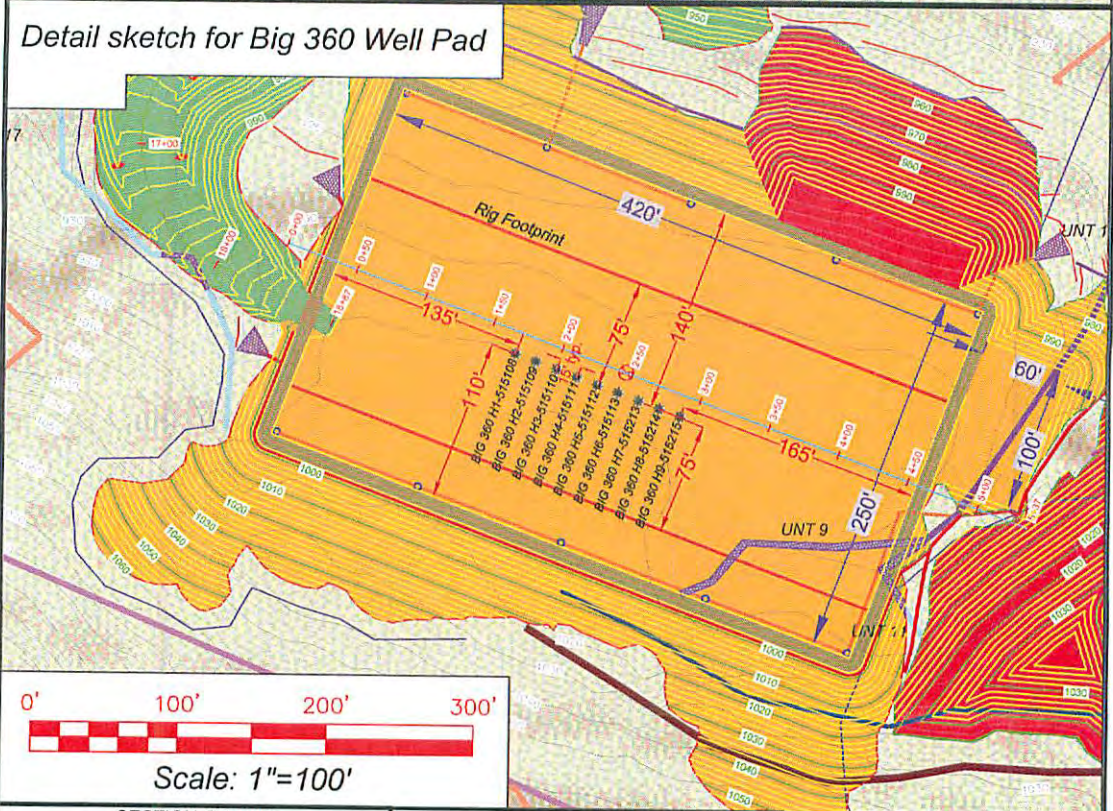
WELL TYPE: OIL GAS LIQUID INJECTION WASTE DISPOSAL
 (IF GAS) PRODUCTION: STORAGE DEEP SHALLOW
 LOCATION: ELEVATION: Original Ground = 1008' Proposed Ground = 998' WATERSHED Richwood Run QUADRANGLE: Big Run
 DISTRICT: Grant COUNTY: Wetzel
 SURFACE OWNER: Coastal Forest Resources Co. f/k/a Coastal Lumber Company ACREAGE: 1,636.5
 ROYALTY OWNER: Mills-Wetzel Land, Inc., LEASE NO: 988530, ACREAGE: 659
 PROPOSED WORK: DRILL CONVERT DRILL DEEPER FRACTURE OR STIMULATE PLUG OFF OLD FORMATION
 PERFORATE NEW FORMATION OTHER PHYSICAL CHANGE IN WELL (SPECIFY) _____
 PLUG AND ABANDON CLEAN OUT AND REPLUG TARGET FORMATION: Marcellus ESTIMATED DEPTH: 7,064'

WELL OPERATOR: EQT Production Company DESIGNATED AGENT: Rex C. Ray
 ADDRESS: 115 Professional Place PO Box 280 ADDRESS: 115 Professional Place PO Box 280
 Bridgeport, WV 26330 Bridgeport, WV 26330

01/29/2016



Detail sketch for Big 360 Well Pad



SECTION OF THE Big Run 7.5' USGS QUADRANGLE		Proposed Disturbance Area	
Projected culvert inventory. (for bid purposes only)	See Site Plan	Well Site Location	See Site Plan
15" minimum diameter culverts	See Site Plan	Proposed Access Road	See Site Plan
24" minimum diameter culverts	See Site Plan	Approximate Total Disturbance	See Site Plan
DRAWN BY: Dale Tomlin	DATE: July 31, 2014	FILE NO: 17413	DRAWING FILE NO: 17413 Rec Plan

Note: SEE SITE PLAN OF BIG 360 FOR COMPLETE GRADING & DRAINAGE CONSTRUCTION INCLUDING EROSION & SEDIMENT CONTROL DETAILS, ETC.



SURVEYING AND MAPPING SERVICES PERFORMED BY:
ALLEGHENY SURVEYS, INC.
 1-800-482-8606
 Birch River Office
 Phone: (304) 649-8606
 Fax: (304) 649-8608

RECEIVED
 Office of Oil and Gas
 DEC 14 2015

WV Department of
 Environmental Protection

01/29/2016