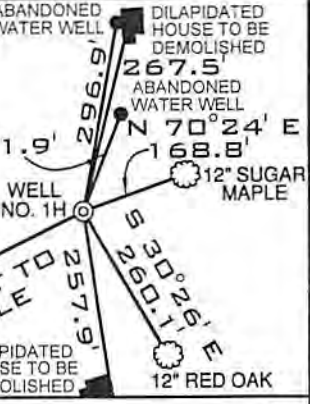


(TH) 6,630'
(BH) 6,420'

REFERENCES
SCALE 1"=300'



NOTE: BORE PATH
BASED ON GRID NORTH.

NOTES

OWNERSHIP TAKEN FROM PUBLIC RECORDS OF WETZEL COUNTY, WV IN APRIL, 2017.
COORDINATES AND WELL TIES BASED UPON DIFFERENTIAL GPS MEASUREMENTS. WELL LOCATION REFERENCES ARE BASED UPON THE MAGNETIC MERIDIAN.

SURFACE TRACT TABLE			
S1	12-4.1	WHITEMAN DEVELOPMENT CO.	2.59 AC.
S2	7-142.1	T. EMCH, II, ET AL	1.35 AC.
S3	7-142	P. WEISENBARGER	1.35 AC.
S4	12-3	T. COFFIELD, TRUST	0.98 AC.
S5	12-43.1	P. WEAVER, ET AL	22.25 AC.
S6	12-41	P. WEAVER, ET AL	3.39 AC.
S7	12-43.4	M.B. INVESTMENTS	0.99 AC.
S8	12-110	LACKAWANNA TRANS. CO.	3.59 AC.
S9	12-72	P. WEAVER, ET AL	0.50 AC.
S10	12-43.3	G. CROSS	0.13 AC.
S11	12-111	WV CONSERVATION COMM	1.0 AC.
S12	12-124	M.B. INVESTMENTS	2.23 AC.
S13	12-134.2	M.B. INVESTMENTS	0.23 AC.
S14	12-112.1	M.B. INVESTMENTS	0.82 AC.
S15	12-134.4	M.B. INVESTMENTS	3.51 AC.

NOTE: FORM WW-6RW (WELL LOCATION RESTRICTION WAIVER) WAS OBTAINED FROM THE SURFACE OWNER FOR THE TWO WATER WELLS ON WELL PAD.

SURFACE HOLE
UTM, NAD83, ZONE 17
IN METERS
N) 4,384,061.53
E) 512,302.15

BOTTOM HOLE
UTM, NAD83, ZONE 17
IN METERS
N) 4,384,231.42
E) 512,362.50

LEGEND

- LEASED TRACTS
- INTERIOR MINERAL TRACTS
- SURFACE TRACTS
- HARD LEASE LINE

(*) DENOTES LOCATION ON UNITED STATES TOPOGRAPHIC MAPS

FILE NUMBER W0110309
DRAWING NUMBER LACKAWANNA_WP_1H-AD
SCALE 1" = 1000'
MINIMUM DEGREE OF ACCURACY 1/200
PROVEN SOURCE SUBMETER MAPPING OF ELEVATION GRADE GPS

I, THE UNDERSIGNED, HEREBY CERTIFY THAT THIS PLAT IS CORRECT TO THE BEST OF MY KNOWLEDGE AND BELIEF AND SHOWS ALL THE INFORMATION REQUIRED BY LAW AND THE REGULATIONS ISSUED AND PRESCRIBED BY THE DEPARTMENT OF ENVIRONMENTAL PROTECTION
P.S. Jonathan N. White
2122



WVDEP
OFFICE OF OIL & GAS
601 57TH STREET
CHARLESTON, WV 25304

OPERATORS WELL NO. LACKAWANNA NO. 1H AS-DRILLED
API WELL NO. 47-103-02982
DATE: APRIL 30, 2017

WELL TYPE: OIL ___ GAS X LIQUID INJECTION ___ WASTE DISPOSAL ___
(IF "GAS") PRODUCTION X STORAGE ___ DEEP ___ SHALLOW X
LOCATION ELEVATION 1306' WATERSHED (HUC 10) OUTLET MIDDLE ISLAND CREEK (UNDEFINED)
DISTRICT MAGNOLIA COUNTY WETZEL
QUADRANGLE PORTERS FALLS 7.5' LEASE NUMBER WV140-0017-002
SURFACE OWNER M.B. INVESTMENTS ACREAGE 88.09
OIL & GAS ROYALTY OWNER M.B. INVESTMENTS, ET AL LEASE ACREAGE 503.85
PROPOSED WORK: DRILL ___ CONVERT ___ DRILL DEEPER ___ REDRILL ___ FRACTURE OR STIMULATE ___ PLUG OFF OLD FORMATION ___
PERFORATE NEW FORMATION ___ OTHER PHYSICAL CHANGE (SPECIFY) ___

TARGET FORMATION Undifferentiated Formation (Below Benson) ESTIMATED DEPTH TVD: 5,615' TMD: 5,685'
WELL OPERATOR GASTAR EXPLORATION USA, INC. DESIGNATED AGENT MICHAEL McCOWN
ADDRESS 229 W MAIN STREET, SUITE 301 CLARKSBURG WV, 26301 ADDRESS 229 W MAIN STREET, SUITE 301 CLARKSBURG WV, 26301

02/16/2018

COUNTY NAME
PERMIT