

103-02970

PHOENIX
TECHNOLOGY SERVICES



EQT Production - Marcellus

Wetzel County, WV

Wetzel County 514384

Well #514384

Main Wellbore

Design: As Drilled Surveys

Standard Survey Report

17 February, 2014

Received
Office of Oil & Gas
DEC 10 2014



01/23/2015

103.02970



Phoenix Technology Services
Survey Report



Database:	EDM 5000.1 Single User Db	Local Co-ordinate Reference:	Site Wetzel County 514384
Company:	EQT Production - Marcellus	TVD Reference:	KB @ 1346.0usft
Project:	Wetzel County, WV	MD Reference:	KB @ 1346.0usft
Site:	Wetzel County 514384	North Reference:	Grid
Well:	Well #514384	Survey Calculation Method:	Minimum Curvature
Wellbore:	Main Wellbore		
Design:	As Drilled Surveys		

Project Wetzel County, WV

Map System:	US State Plane 1927 (Exact solution)	System Datum:	Mean Sea Level
Geo Datum:	NAD 1927 (NADCON CONUS)		
Map Zone:	West Virginia North 4701		Using geodetic scale factor

Site Wetzel County 514384

Site Position:		Northing:	385,228.00 usft	Latitude:	39.55
From:	Map	Easting:	1,678,299.00 usft	Longitude:	-80.64
Position Uncertainty:	0.0 usft	Slot Radius:	13-3/16 "	Grid Convergence:	-0.73 °

Well Well #514384

Well Position	+N/-S	0.0 usft	Northing:	385,228.00 usft	Latitude:	39° 33' 7.443 N
	+E/-W	0.0 usft	Easting:	1,678,299.00 usft	Longitude:	80° 38' 27.283 W
Position Uncertainty		0.0 usft	Wellhead Elevation:	usft	Ground Level:	1,330.0 usft

Wellbore Main Wellbore

Magnetics	Model Name	Sample Date	Declination (°)	Dip Angle (°)	Field Strength (nT)
	IGRF2010_14	1/22/2014	-8.62	67.04	52,459

Design As Drilled Surveys

Audit Notes:

Version:	1.0	Phase:	ACTUAL	Tie On Depth:	0.0
-----------------	-----	---------------	--------	----------------------	-----

Vertical Section:	Depth From (TVD) (usft)	+N/-S (usft)	+E/-W (usft)	Direction (°)
	0.0	0.0	0.0	286.34

Survey Program Date 2/17/2014

From (')	To (usft)	Survey (Wellbore)	Tool Name	Description
0.00	4,452.0	Gyrodata Gyro (Main Wellbore)	GYD_DP_MS	Gyrodata gyro-compassing and drop
0.00	10,493.0	514384 PHX MWD (Main Wellbore)	MWD	MWD - Standard

Survey

Measured Depth (usft)	Inclination (°)	Azimuth (°)	Vertical Depth (usft)	Subsea Depth (usft)	+N/-S (usft)	+E/-W (usft)	Vertical Section (usft)	Dogleg Rate (°/100usft)	Build Rate (°/100usft)	Turn Rate (°/100usft)
0.0	0.00	0.00	0.0	-1,346.0	0.0	0.0	0.0	0.00	0.00	0.00
99.0	0.16	41.92	99.0	-1,247.0	0.1	0.1	-0.1	0.16	0.16	0.00
199.0	0.13	89.55	199.0	-1,147.0	0.2	0.3	-0.2	0.12	-0.03	47.63
299.0	0.11	142.67	299.0	-1,047.0	0.1	0.5	-0.4	0.11	-0.02	53.12
399.0	0.17	163.24	399.0	-947.0	-0.1	0.6	-0.6	0.08	0.06	20.57
499.0	0.20	178.66	499.0	-847.0	-0.4	0.6	-0.7	0.06	0.03	15.42
599.0	0.19	178.20	599.0	-747.0	-0.7	0.6	-0.8	0.01	-0.01	-0.46
699.0	0.14	173.12	699.0	-647.0	-1.0	0.6	-0.9	0.05	-0.05	-5.08

Received

103-02970



Phoenix Technology Services
Survey Report



Database:	EDM 5000.1 Single User Db	Local Co-ordinate Reference:	Site Wetzel County 514384
Company:	EQT Production - Marcellus	TVD Reference:	KB @ 1346.0usft
Project:	Wetzel County, WV	MD Reference:	KB @ 1346.0usft
Site:	Wetzel County 514384	North Reference:	Grid
Well:	Well #514384	Survey Calculation Method:	Minimum Curvature
Wellbore:	Main Wellbore		
Design:	As Drilled Surveys		

Survey										
Measured Depth (usft)	Inclination (°)	Azimuth (°)	Vertical Depth (usft)	Subsea Depth (usft)	+N/-S (usft)	+E/-W (usft)	Vertical Section (usft)	Dogleg Rate (°/100usft)	Build Rate (°/100usft)	Turn Rate (°/100usft)
799.0	0.12	139.21	799.0	-547.0	-1.2	0.7	-1.0	0.08	-0.02	-33.91
899.0	0.04	68.65	899.0	-447.0	-1.3	0.8	-1.2	0.11	-0.08	-70.56
999.0	0.04	189.22	999.0	-347.0	-1.3	0.9	-1.2	0.07	0.00	120.57
1,099.0	0.03	128.04	1,099.0	-247.0	-1.4	0.9	-1.2	0.04	-0.01	-61.18
1,199.0	0.11	152.38	1,199.0	-147.0	-1.5	0.9	-1.3	0.08	0.08	24.34
1,299.0	0.23	145.12	1,299.0	-47.0	-1.7	1.1	-1.5	0.12	0.12	-7.26
1,399.0	0.21	127.83	1,399.0	53.0	-2.0	1.4	-1.9	0.07	-0.02	-17.29
1,499.0	0.28	129.87	1,499.0	153.0	-2.3	1.7	-2.3	0.07	0.07	2.04
1,599.0	0.29	116.90	1,599.0	253.0	-2.5	2.1	-2.7	0.07	0.01	-12.97
1,699.0	0.36	112.04	1,699.0	353.0	-2.8	2.6	-3.3	0.08	0.07	-4.86
1,799.0	0.37	112.64	1,799.0	453.0	-3.0	3.2	-3.9	0.01	0.01	0.60
1,899.0	0.59	106.87	1,899.0	553.0	-3.3	4.0	-4.8	0.22	0.22	-5.77
1,999.0	0.58	108.54	1,999.0	653.0	-3.6	5.0	-5.8	0.02	-0.01	1.67
2,099.0	0.60	107.33	2,099.0	753.0	-3.9	6.0	-6.8	0.02	0.02	-1.21
2,199.0	0.56	112.97	2,199.0	853.0	-4.3	6.9	-7.8	0.07	-0.04	5.64
2,299.0	0.59	128.14	2,299.0	953.0	-4.8	7.8	-8.8	0.15	0.03	15.17
2,399.0	0.63	127.18	2,399.0	1,053.0	-5.4	8.6	-9.8	0.04	0.04	-0.96
2,499.0	0.66	134.94	2,499.0	1,153.0	-6.2	9.4	-10.8	0.09	0.03	7.76
2,599.0	0.65	134.29	2,598.9	1,252.9	-7.0	10.3	-11.8	0.01	-0.01	-0.65
2,699.0	0.54	140.52	2,698.9	1,352.9	-7.7	11.0	-12.7	0.13	-0.11	6.23
2,799.0	0.36	149.22	2,798.9	1,452.9	-8.4	11.4	-13.3	0.19	-0.18	8.70
2,899.0	0.26	166.41	2,898.9	1,552.9	-8.8	11.6	-13.7	0.14	-0.10	17.19
2,999.0	0.24	174.64	2,998.9	1,652.9	-9.3	11.7	-13.8	0.04	-0.02	8.23
3,099.0	0.17	175.37	3,098.9	1,752.9	-9.6	11.7	-14.0	0.07	-0.07	0.73
3,199.0	0.18	202.91	3,198.9	1,852.9	-9.9	11.7	-14.0	0.08	0.01	27.54
3,299.0	0.15	228.76	3,298.9	1,952.9	-10.2	11.5	-13.9	0.08	-0.03	25.85
3,399.0	0.19	195.73	3,398.9	2,052.9	-10.4	11.4	-13.9	0.10	0.04	-33.03
3,499.0	0.20	224.75	3,498.9	2,152.9	-10.7	11.2	-13.8	0.10	0.01	29.02
3,599.0	0.36	262.93	3,598.9	2,252.9	-10.8	10.8	-13.4	0.24	0.16	38.18
3,699.0	0.30	267.69	3,698.9	2,352.9	-10.9	10.2	-12.9	0.07	-0.06	4.76
3,799.0	0.21	272.42	3,798.9	2,452.9	-10.9	9.8	-12.4	0.09	-0.09	4.73
3,899.0	0.30	273.95	3,898.9	2,552.9	-10.9	9.3	-12.0	0.09	0.09	1.53
3,999.0	0.35	285.36	3,998.9	2,652.9	-10.8	8.8	-11.4	0.08	0.05	11.41
4,099.0	0.43	291.47	4,098.9	2,752.9	-10.6	8.1	-10.8	0.09	0.08	6.11
4,199.0	0.23	286.50	4,198.9	2,852.9	-10.4	7.6	-10.2	0.20	-0.20	-4.97
4,299.0	0.10	277.97	4,298.9	2,952.9	-10.3	7.3	-9.9	0.13	-0.13	-8.53
4,399.0	0.05	230.65	4,398.9	3,052.9	-10.3	7.2	-9.8	0.08	-0.05	-47.32
4,452.0	0.10	215.16	4,451.9	3,105.9	-10.4	7.1	-9.8	0.10	0.09	-29.23
4,483.0	2.80	226.70	4,482.9	3,136.9	-10.9	6.6	-9.4	8.72	8.71	37.23
4,515.0	6.10	228.40	4,514.8	3,168.8	-12.6	4.7	-8.1	10.32	10.31	5.31
4,546.0	9.60	232.20	4,545.5	3,199.5	-15.2	1.5	-5.7	11.41	11.29	12.26
4,577.0	11.30	232.80	4,576.0	3,230.0	-18.7	-3.0	-2.4	5.50	5.48	1.94

Received

Database:	EDM 5000.1 Single User Db	Local Co-ordinate Reference:	Site Wetzel County 514384
Company:	EQT Production - Marcellus	TVD Reference:	KB @ 1346.0usft
Project:	Wetzel County, WV	MD Reference:	KB @ 1346.0usft
Site:	Wetzel County 514384	North Reference:	Grid
Well:	Well #514384	Survey Calculation Method:	Minimum Curvature
Wellbore:	Main Wellbore		
Design:	As Drilled Surveys		

Survey											
Measured Depth (usft)	Inclination (°)	Azimuth (°)	Vertical Depth (usft)	Subsea Depth (usft)	+N/-S (usft)	+E/-W (usft)	Vertical Section (usft)	Dogleg Rate (°/100usft)	Build Rate (°/100usft)	Turn Rate (°/100usft)	
4,609.0	12.00	229.30	4,607.3	3,261.3	-22.7	-8.0	1.3	3.11	2.19	-10.94	
4,641.0	13.30	224.10	4,638.6	3,292.6	-27.5	-13.1	4.8	5.40	4.06	-16.25	
4,673.0	15.70	225.80	4,669.5	3,323.5	-33.2	-18.8	8.7	7.62	7.50	5.31	
4,704.0	19.00	228.60	4,699.1	3,353.1	-39.5	-25.6	13.4	10.98	10.65	9.03	
4,736.0	22.60	230.90	4,729.0	3,383.0	-46.8	-34.2	19.7	11.53	11.25	7.19	
4,768.0	25.10	230.60	4,758.3	3,412.3	-55.0	-44.3	27.0	7.82	7.81	-0.94	
4,799.0	26.70	228.40	4,786.2	3,440.2	-63.8	-54.6	34.4	6.02	5.16	-7.10	
4,831.0	29.30	227.60	4,814.4	3,468.4	-73.8	-65.7	42.3	8.21	8.13	-2.50	
4,863.0	31.60	229.20	4,842.0	3,496.0	-84.6	-77.8	50.9	7.62	7.19	5.00	
4,894.0	33.80	230.30	4,868.1	3,522.1	-95.4	-90.6	60.1	7.35	7.10	3.55	
4,926.0	36.50	228.80	4,894.3	3,548.3	-107.4	-104.6	70.2	8.86	8.44	-4.69	
4,958.0	40.40	227.60	4,919.3	3,573.3	-120.6	-119.5	80.7	12.41	12.19	-3.75	
5,021.0	43.90	227.50	4,966.0	3,620.0	-149.2	-150.7	102.6	5.56	5.56	-0.16	
5,085.0	42.90	225.50	5,012.5	3,666.5	-179.4	-182.6	124.7	2.66	-1.56	-3.13	
5,148.0	40.20	223.90	5,059.7	3,713.7	-209.1	-212.0	144.6	4.60	-4.29	-2.54	
5,211.0	39.20	224.60	5,108.2	3,762.2	-237.9	-240.0	163.4	1.74	-1.59	1.11	
5,274.0	41.80	229.40	5,156.1	3,810.1	-265.8	-270.0	184.3	6.44	4.13	7.62	
5,338.0	39.70	227.10	5,204.5	3,858.5	-293.6	-301.1	206.4	4.03	-3.28	-3.59	
5,401.0	39.00	226.20	5,253.3	3,907.3	-321.0	-330.2	226.5	1.43	-1.11	-1.43	
5,464.0	41.10	229.30	5,301.5	3,955.5	-348.2	-360.2	247.7	4.60	3.33	4.92	
5,527.0	41.00	227.10	5,349.0	4,003.0	-375.8	-391.0	269.5	2.30	-0.16	-3.49	
5,591.0	42.10	226.50	5,396.9	4,050.9	-404.9	-422.0	291.0	1.83	1.72	-0.94	
5,654.0	41.40	225.70	5,443.9	4,097.9	-434.0	-452.2	311.8	1.40	-1.11	-1.27	
5,717.0	42.40	227.70	5,490.8	4,144.8	-462.8	-482.8	333.1	2.65	1.59	3.17	
5,780.0	41.40	225.80	5,537.7	4,191.7	-491.6	-513.5	354.4	2.56	-1.59	-3.02	
5,843.0	41.80	226.30	5,584.8	4,238.8	-520.6	-543.6	375.1	0.83	0.63	0.79	
5,906.0	42.40	228.70	5,631.5	4,285.5	-549.2	-574.7	397.0	2.73	0.95	3.81	
5,970.0	40.80	227.20	5,679.4	4,333.4	-577.6	-606.3	419.3	2.94	-2.50	-2.34	
6,033.0	41.50	227.60	5,726.8	4,380.8	-605.7	-636.8	440.6	1.19	1.11	0.63	
6,096.0	43.60	231.20	5,773.3	4,427.3	-633.4	-669.2	463.9	5.10	3.33	5.71	
6,159.0	41.80	229.40	5,819.6	4,473.6	-660.7	-702.0	487.8	3.45	-2.86	-2.86	
6,222.0	40.10	227.70	5,867.1	4,521.1	-688.0	-733.0	509.8	3.23	-2.70	-2.70	
6,286.0	40.70	226.60	5,915.9	4,569.9	-716.2	-763.4	531.0	1.46	0.94	-1.72	
6,349.0	41.30	228.90	5,963.4	4,617.4	-744.0	-794.0	552.6	2.58	0.95	3.65	
6,412.0	39.60	226.20	6,011.4	4,665.4	-771.5	-824.1	573.7	3.87	-2.70	-4.29	
6,475.0	40.80	225.60	6,059.5	4,713.5	-799.8	-853.3	593.8	2.00	1.90	-0.95	
6,539.0	41.80	225.10	6,107.6	4,761.6	-829.5	-883.4	614.3	1.65	1.56	-0.78	
6,602.0	40.70	223.10	6,154.9	4,808.9	-859.3	-912.3	633.6	2.73	-1.75	-3.17	
6,665.0	40.70	223.00	6,202.7	4,856.7	-889.4	-940.3	652.1	0.10	0.00	-0.16	
6,728.0	40.90	223.80	6,250.4	4,904.4	-919.3	-968.6	670.8	0.89	0.32	1.27	
6,791.0	39.50	222.70	6,298.5	4,952.5	-948.9	-996.5	689.2	2.49	-2.22	-1.75	
6,855.0	40.90	222.50	6,347.4	5,001.4	-979.3	-1,024.5	707.5	2.20	2.19	-0.31	
6,918.0	42.90	227.00	6,394.3	5,048.3	-1,009.1	-1,054.1	727.5	5.73	3.17	7.14	



103-02970

Phoenix Technology Services
Survey Report



Database:	EDM 5000.1 Single User Db	Local Co-ordinate Reference:	Site Wetzel County 514384
Company:	EQT Production - Marcellus	TVD Reference:	KB @ 1346.0usft
Project:	Wetzel County, WV	MD Reference:	KB @ 1346.0usft
Site:	Wetzel County 514384	North Reference:	Grid
Well:	Well #514384	Survey Calculation Method:	Minimum Curvature
Wellbore:	Main Wellbore		
Design:	As Drilled Surveys		

Survey										
Measured Depth (usft)	Inclination (°)	Azimuth (°)	Vertical Depth (usft)	Subsea Depth (usft)	+N/-S (usft)	+E/-W (usft)	Vertical Section (usft)	Dogleg Rate (°/100usft)	Build Rate (°/100usft)	Turn Rate (°/100usft)
6,981.0	41.70	224.80	6,440.9	5,094.9	-1,038.6	-1,084.5	748.5	3.02	-1.90	-3.49
7,044.0	42.00	226.60	6,487.8	5,141.8	-1,068.0	-1,114.6	769.1	1.96	0.48	2.86
7,108.0	41.80	227.60	6,535.5	5,189.5	-1,097.1	-1,145.9	790.9	1.09	-0.31	1.56
7,171.0	40.80	227.70	6,582.8	5,236.8	-1,125.1	-1,176.6	812.5	1.59	-1.59	0.16
7,235.0	41.80	228.00	6,630.9	5,284.9	-1,153.4	-1,208.0	834.6	1.59	1.56	0.47
7,298.0	42.50	227.20	6,677.6	5,331.6	-1,181.9	-1,239.2	856.5	1.40	1.11	-1.27
7,362.0	41.50	227.20	6,725.1	5,379.1	-1,211.0	-1,270.6	878.5	1.56	-1.56	0.00
7,393.0	41.30	225.60	6,748.4	5,402.4	-1,225.2	-1,285.4	888.8	3.47	-0.65	-5.16
7,425.0	40.70	228.60	6,772.5	5,426.5	-1,239.5	-1,300.8	899.5	6.43	-1.88	9.38
7,456.0	40.90	234.30	6,796.0	5,450.0	-1,252.1	-1,316.6	911.1	12.03	0.65	18.39
7,488.0	41.20	237.70	6,820.2	5,474.2	-1,263.8	-1,334.1	924.6	7.04	0.94	10.63
7,520.0	41.60	240.90	6,844.2	5,498.2	-1,274.6	-1,352.3	939.0	6.73	1.25	10.00
7,551.0	41.30	246.60	6,867.4	5,521.4	-1,283.7	-1,370.6	954.1	12.21	-0.97	18.39
7,583.0	41.10	252.20	6,891.5	5,545.5	-1,291.1	-1,390.4	970.9	11.54	-0.63	17.50
7,615.0	41.30	256.70	6,915.6	5,569.6	-1,296.8	-1,410.7	988.8	9.28	0.63	14.06
7,646.0	41.40	260.80	6,938.8	5,592.8	-1,300.7	-1,430.7	1,006.9	8.74	0.32	13.23
7,678.0	42.10	265.00	6,962.7	5,616.7	-1,303.4	-1,451.9	1,026.5	9.01	2.19	13.13
7,710.0	42.90	270.90	6,986.3	5,640.3	-1,304.1	-1,473.5	1,047.0	12.70	2.50	18.44
7,741.0	44.00	274.20	7,008.8	5,662.8	-1,303.2	-1,494.7	1,067.7	8.13	3.55	10.65
7,773.0	45.60	278.20	7,031.5	5,685.5	-1,300.7	-1,517.2	1,089.9	10.13	5.00	12.50
7,804.0	46.80	282.10	7,053.0	5,707.0	-1,296.8	-1,539.2	1,112.1	9.87	3.87	12.58
7,836.0	47.60	285.50	7,074.8	5,728.8	-1,291.2	-1,562.0	1,135.5	8.19	2.50	10.63
7,868.0	47.60	288.30	7,096.3	5,750.3	-1,284.3	-1,584.6	1,159.2	6.46	0.00	8.75
7,899.0	48.60	291.50	7,117.0	5,771.0	-1,276.5	-1,606.3	1,182.2	8.33	3.23	10.32
7,931.0	50.60	295.00	7,137.8	5,791.8	-1,266.8	-1,628.6	1,206.4	10.41	6.25	10.94
7,962.0	52.90	300.30	7,157.0	5,811.0	-1,255.5	-1,650.2	1,230.2	15.34	7.42	17.10
7,994.0	55.60	302.90	7,175.7	5,829.7	-1,241.9	-1,672.3	1,255.3	10.71	8.44	8.13
8,026.0	58.10	305.20	7,193.2	5,847.2	-1,226.9	-1,694.5	1,280.8	9.86	7.81	7.19
8,057.0	60.70	307.10	7,209.0	5,863.0	-1,211.2	-1,716.0	1,305.9	9.91	8.39	6.13
8,089.0	63.30	309.90	7,224.0	5,878.0	-1,193.6	-1,738.1	1,332.0	11.21	8.13	8.75
8,121.0	65.10	312.10	7,237.9	5,891.9	-1,174.7	-1,759.9	1,358.2	8.36	5.63	6.88
8,152.0	67.90	312.90	7,250.3	5,904.3	-1,155.5	-1,780.8	1,383.7	9.34	9.03	2.58
8,184.0	69.90	314.50	7,261.8	5,915.8	-1,134.8	-1,802.4	1,410.2	7.80	6.25	5.00
8,216.0	71.30	317.10	7,272.4	5,926.4	-1,113.2	-1,823.4	1,436.5	8.82	4.38	8.13
8,247.0	73.40	318.40	7,281.8	5,935.8	-1,091.3	-1,843.3	1,461.7	7.86	6.77	4.19
8,279.0	76.30	319.70	7,290.2	5,944.2	-1,068.0	-1,863.5	1,487.7	9.87	9.06	4.06
8,310.0	80.00	321.70	7,296.5	5,950.5	-1,044.5	-1,882.7	1,512.8	13.50	11.94	6.45
8,342.0	83.20	323.40	7,301.2	5,955.2	-1,019.4	-1,902.0	1,538.3	11.30	10.00	5.31
8,374.0	86.50	325.20	7,304.1	5,958.1	-993.5	-1,920.6	1,563.4	11.74	10.31	5.63
8,437.0	90.50	330.30	7,305.7	5,959.7	-940.3	-1,954.2	1,610.6	10.28	6.35	8.10
8,500.0	92.10	332.00	7,304.3	5,958.3	-885.1	-1,984.5	1,655.3	3.71	2.54	2.70
8,563.0	90.30	331.60	7,303.0	5,957.0	-829.6	-2,014.3	1,699.5	2.93	-2.86	-0.63

Received

DEC 10 2014

01/23/2015



Database:	EDM 5000.1 Single User Db	Local Co-ordinate Reference:	Site Wetzel County 514384
Company:	EQT Production - Marcellus	TVD Reference:	KB @ 1346.0usft
Project:	Wetzel County, WV	MD Reference:	KB @ 1346.0usft
Site:	Wetzel County 514384	North Reference:	Grid
Well:	Well #514384	Survey Calculation Method:	Minimum Curvature
Wellbore:	Main Wellbore		
Design:	As Drilled Surveys		

Measured Depth (usft)	Inclination (°)	Azimuth (°)	Vertical Depth (usft)	Subsea Depth (usft)	+N/-S (usft)	+E/-W (usft)	Vertical Section (usft)	Dogleg Rate (°/100usft)	Build Rate (°/100usft)	Turn Rate (°/100usft)
8,627.0	88.20	331.70	7,303.8	5,957.8	-773.3	-2,044.7	1,744.5	3.28	-3.28	0.16
8,690.0	88.00	332.60	7,305.9	5,959.9	-717.6	-2,074.1	1,788.4	1.46	-0.32	1.43
8,753.0	87.70	332.50	7,308.3	5,962.3	-661.8	-2,103.1	1,831.9	0.50	-0.48	-0.16
8,816.0	90.50	332.50	7,309.3	5,963.3	-605.9	-2,132.2	1,875.6	4.44	4.44	0.00
8,880.0	91.30	338.20	7,308.3	5,962.3	-547.8	-2,158.9	1,917.5	8.99	1.25	8.91
8,943.0	91.20	336.80	7,306.9	5,960.9	-489.6	-2,183.0	1,957.0	2.23	-0.16	-2.22
9,007.0	91.00	337.10	7,305.7	5,959.7	-430.7	-2,208.0	1,997.6	0.56	-0.31	0.47
9,070.0	91.20	336.10	7,304.5	5,958.5	-372.9	-2,233.1	2,037.9	1.62	0.32	-1.59
9,133.0	91.00	332.20	7,303.2	5,957.2	-316.2	-2,260.5	2,080.2	6.20	-0.32	-6.19
9,197.0	90.80	332.20	7,302.2	5,956.2	-259.6	-2,290.4	2,124.8	0.31	-0.31	0.00
9,260.0	90.40	330.70	7,301.6	5,955.6	-204.3	-2,320.5	2,169.2	2.46	-0.63	-2.38
9,323.0	90.20	329.30	7,301.2	5,955.2	-149.7	-2,352.0	2,214.8	2.24	-0.32	-2.22
9,386.0	90.60	330.90	7,300.8	5,954.8	-95.1	-2,383.4	2,260.3	2.62	0.63	2.54
9,450.0	90.70	331.70	7,300.1	5,954.1	-39.0	-2,414.1	2,305.6	1.26	0.16	1.25
9,513.0	90.90	331.30	7,299.2	5,953.2	16.4	-2,444.2	2,350.0	0.71	0.32	-0.63
9,576.0	90.90	330.40	7,298.2	5,952.2	71.4	-2,474.9	2,394.9	1.43	0.00	-1.43
9,640.0	90.90	329.80	7,297.2	5,951.2	126.9	-2,506.7	2,441.2	0.94	0.00	-0.94
9,703.0	90.90	329.30	7,296.2	5,950.2	181.2	-2,538.7	2,487.1	0.79	0.00	-0.79
9,766.0	91.10	329.30	7,295.1	5,949.1	235.3	-2,570.8	2,533.2	0.32	0.32	0.00
9,829.0	90.90	329.30	7,294.0	5,948.0	289.5	-2,603.0	2,579.3	0.32	-0.32	0.00
9,892.0	89.90	326.90	7,293.6	5,947.6	343.0	-2,636.3	2,626.3	4.13	-1.59	-3.81
9,956.0	90.20	327.90	7,293.5	5,947.5	396.9	-2,670.8	2,674.5	1.63	0.47	1.56
10,019.0	90.10	331.50	7,293.4	5,947.4	451.3	-2,702.5	2,720.3	5.72	-0.16	5.71
10,082.0	90.90	331.60	7,292.8	5,946.8	506.7	-2,732.6	2,764.7	1.28	1.27	0.16
10,145.0	90.70	334.20	7,291.9	5,945.9	562.7	-2,761.2	2,808.0	4.14	-0.32	4.13
10,209.0	90.30	335.90	7,291.4	5,945.4	620.8	-2,788.2	2,850.3	2.73	-0.63	2.66
10,272.0	89.50	336.70	7,291.5	5,945.5	678.5	-2,813.6	2,890.8	1.80	-1.27	1.27
10,335.0	89.60	336.60	7,292.0	5,946.0	736.3	-2,838.5	2,931.0	0.22	0.16	-0.16
10,398.0	89.40	335.90	7,292.5	5,946.5	794.0	-2,863.9	2,971.6	1.16	-0.32	-1.11
Last Survey MD=10435'										
10,435.0	89.50	335.60	7,292.9	5,946.9	827.7	-2,879.1	2,995.7	0.85	0.27	-0.81
Projection to TD MD=10493'										
10,493.0	89.50	335.60	7,293.4	5,947.4	880.5	-2,903.1	3,033.5	0.00	0.00	0.00

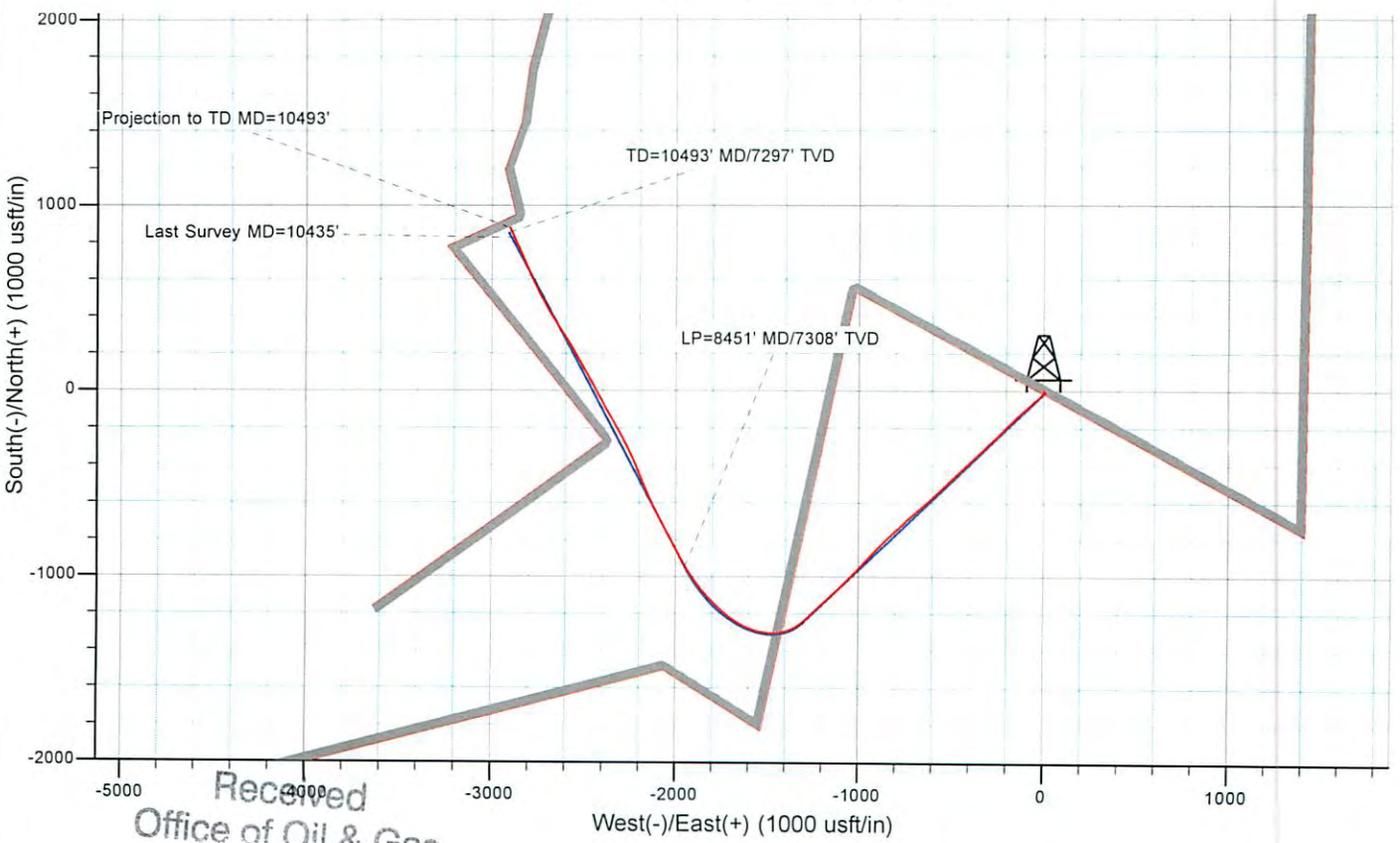
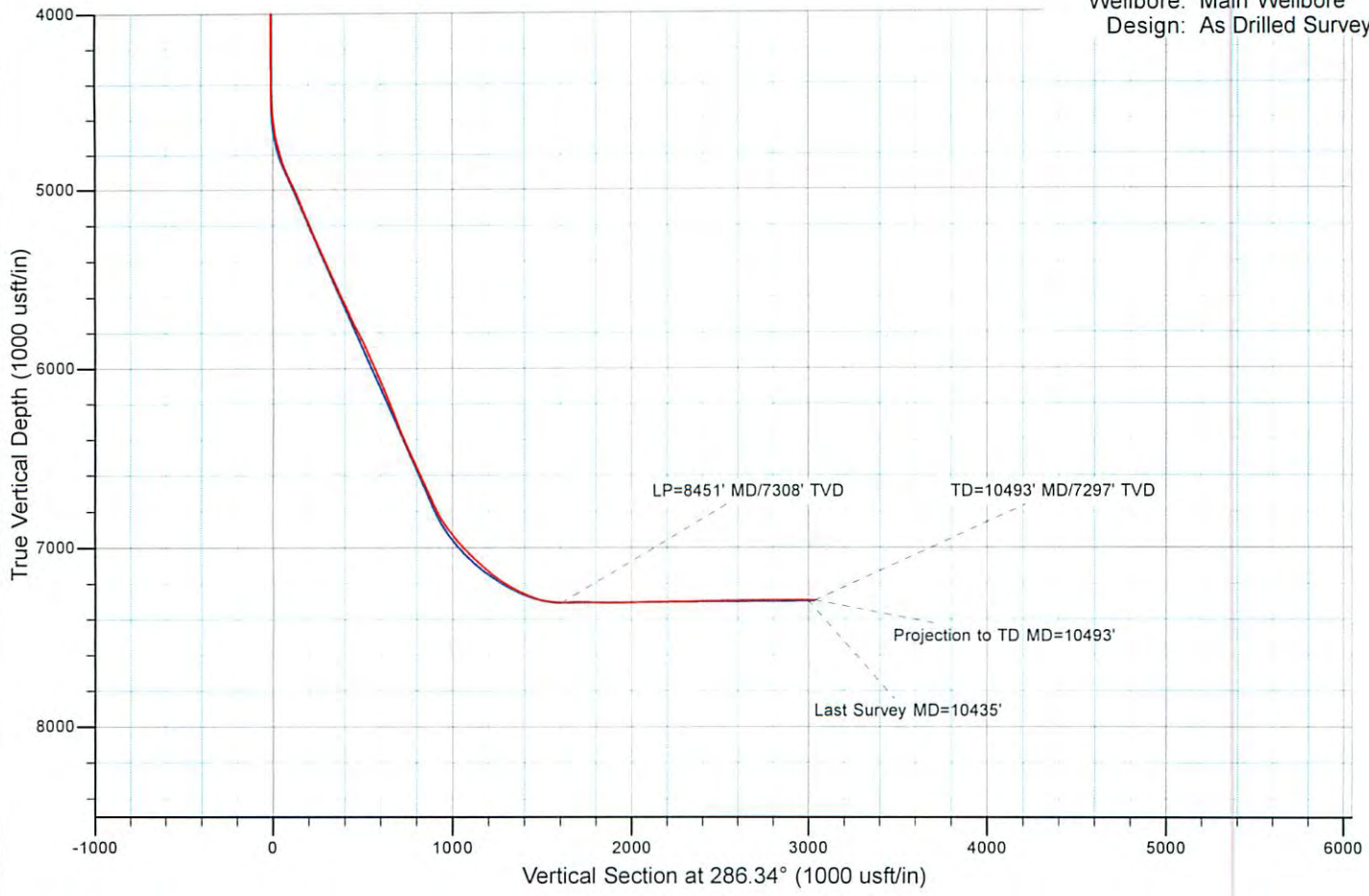
Measured Depth (usft)	Vertical Depth (usft)	+N/-S (usft)	+E/-W (usft)	Comment
10,435.0	7,292.9	827.7	-2,879.1	Last Survey MD=10435'
10,493.0	7,293.4	880.5	-2,903.1	Projection to TD MD=10493'

Checked By: _____ Approved By: _____ Date: _____



EQT Production - Marcellus

Project: Wetzel County, WV
Site: Wetzel County 514384
Well: Well #514384
Wellbore: Main Wellbore
Design: As Drilled Surveys



Received
Office of Oil & Gas
DEC 10 2014

01/23/2015